



VICTORIA UNIVERSITY OF
WELLINGTON
TE HERENGA WAKA
NEW ZEALAND

STUDY ABROAD AND EXCHANGE

WELLINGTON, NEW ZEALAND



TOP 1%

(QS Sustainability Rankings 2024)

OF UNIVERSITIES
LEADING THE WAY
IN SOCIAL AND
ENVIRONMENTAL
SUSTAINABILITY

#1

IN NEW ZEALAND
FOR RESEARCH
INTENSITY*

* The latest Performance-Based Research Fund Quality Evaluation



EXPLORE AOTEAROA NEW ZEALAND

New Zealand has it all—quality education, breathtaking scenery, a vibrant culture, and some of the friendliest people anywhere in the world.

New Zealand's compact size (similar to the United Kingdom) means you are just a short distance away from some of the most stunning destinations in the world.



Explore
New Zealand while
you are here to
study—your
options for
adventure are
endless.



In New Zealand, you'll find everything from snow-capped mountains, golden sandy beaches, whale watching, bungy jumping, natural thermal hot springs, world-renowned hiking trails, beautiful national parks, and bustling cities with world-class restaurants, theatres, museums, and activities for everyone.

www.newzealand.com



NEW ZEALAND AT A GLANCE

MĀORI NAME: Aotearoa

POPULATION: 5 million

CAPITAL: Wellington

LANGUAGES:
English, Māori,
New Zealand Sign Language

CURRENCY:
New Zealand Dollar

WARMEST MONTHS:
January, February

COLDEST MONTHS:
July, August

GOVERNMENT:
Parliamentary democracy,
member of the Commonwealth

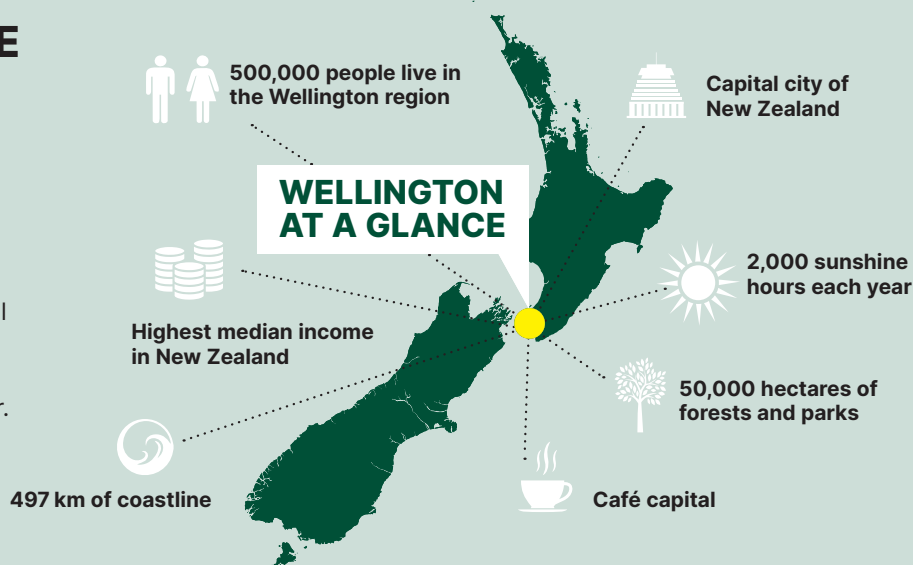
NATIONAL BIRD:
Kiwi



DISCOVER WELLINGTON

STUDY IN THE COOLEST LITTLE CAPITAL THAT HAS IT ALL

Wellington is the geographic, political, and cultural heart of New Zealand. Within the city's beautiful harbour setting, you'll find a great quality of life, a strong global outlook, and a study experience to remember.



WELLINGTON IS AN IDEAL PLACE TO STUDY

CREATIVE

Wellington is New Zealand's most creative city. It has topped the list for the past 20 years. You can find Wētā Workshop and the Museum of New Zealand Te Papa Tongarewa here.
(Infometrics Creativity Index 2023)

SAFE

Wellington is a safe and friendly place to live. It's ranked among the top 20 safest cities in the world.
(Safest Cities in the World 2024, World Population Review)

DIVERSE

About 34 percent of people who live in Wellington were born outside of New Zealand, making it a diverse and welcoming city.
(Latest figures, Statistics New Zealand 2018)

CLEAN AND GREEN

Renowned for its clean, fresh air and green outdoor spaces, Wellington city has more than 100 parks and playgrounds, as well as a stunning waterfront, beaches, forests, and coastline.

HIGH TECH

Wellington is at the forefront of technology and innovation, with many tech companies calling it home. It's named as one of the world's '21 Places of the Future'.
(Cognizant Center for the Future of Work 2021)

HAPPY

New Zealand is known for being one of the world's most sociable and supportive countries. It's no surprise that it ranks as the eleventh happiest country in the world.
(World Happiness Report 2024)



VICTORIA UNIVERSITY OF WELLINGTON

Our students come from about

120
countries
around the world

Top 1%

of the world's universities in
15 subject areas
(QS World University Rankings by
Subject 2024)

ZERO
CARBON BY 2030



Top 100

in the world in
10 subjects

(QS World University Rankings
by Subject 2024)



96%

of graduates were employed prior to
or within six months of completing
their degree

(2022–2023 Graduate Destinations Survey)

3,000 of our **17,000** students
are international students

170+ programmes

40+ research institutes

4 libraries

140+ clubs and societies



**3 CENTRAL
CITY CAMPUSES
IN WELLINGTON**



KELBURN



PIPITEA



TE ARO



"I had the opportunity to take courses that aren't available at my university in the United States and build skills in diverse new areas. Studying in Wellington makes it feel like you can get involved and work in whatever industry you are interested in."

David Shapiro

Brandeis University, USA

Study Abroad trimester in Film and Media Studies

STUDY WHAT YOU LOVE

Victoria University of Wellington currently offers more than 170 different subjects. To find out more, go to our website.

www.wgtn.ac.nz/international/programmes

ARCHITECTURAL STUDIES AND BUILDING SCIENCE

Architecture
Architecture History and Theory
Building Science
Construction Law*
Interior Architecture
Landscape Architecture
Project Management
Sustainable Engineering Systems
Urban and Regional Planning*

BUSINESS

Accounting
Actuarial Science
Banking
Business Administration*
Business Analysis*
Commercial Law
Data Science
Econometrics
Economics
Finance
Global Business*
Human Resource Management and Employment Relations
Information Systems
Innovation and Entrepreneurship
International Business
Management
Marketing
Public Management*
Public Policy
Sustainability and Ethics in Business
Taxation
Tourism Management

COMMUNICATION

Intercultural Communication
Linguistics
Literary and Creative Communication
Marketing Communication
Media Studies
Political Communication
Science Communication

DESIGN, FILM, AND MEDIA

Animation and Visual Effects
Communication Design
Design for Social Innovation
Design Technology*
Fashion Design Technology
Film
Game Design
Industrial Design
Interaction Design
Media Design
Media Studies
User Experience Design*
Visual Narratives

EDUCATION AND TEACHING

Education
Educational Psychology
Teacher Education (Early Childhood)
Teacher Education (Primary and Secondary)**

ENGINEERING AND DIGITAL TECHNOLOGIES

Artificial Intelligence
Computer Graphics and Games
Computer Science
Cybersecurity Engineering
Data Science
Electrical and Electronic Engineering
Electronic and Computer Systems
Software Engineering

ENGLISH LITERATURE AND CREATIVE WRITING

Creative Writing*
English Literature

ENVIRONMENTAL SCIENCES

Climate Change Science and Policy*
Climate Science
Conservation Biology*
Earth Science
Ecological Restoration*
Ecology and Biodiversity
Education for the Environment
Environment and Society
Environment and Sustainability
Environmental Design
Environmental Humanities
Environmental Science
Environmental Studies
Marine Biology
Marine Conservation*

HEALTH

Health Informatics
Health Leadership and Management*
Health Policy, Planning, and Service Delivery*
Health Promotion
Health Psychology
Midwifery
Nursing Practice*
Physical Activity and Hauora
Population Health, Policy, and Service Delivery
Professional Practice*
Workplace Health and Safety*

HISTORY AND PHILOSOPHY

Art History
Classical Studies
History
Museum and Heritage Studies*
Philosophy

LANGUAGES AND LINGUISTICS

Academic and Professional Writing
Applied Linguistics*
Asian Studies
Chinese
English
French
German
Intercultural Communication and Applied Translation*
Japanese
Linguistics
Literary Translation Studies*
Modern Language Studies
New Zealand Sign Language (NZSL) Studies
Pacific Studies
Samoan Studies / Matā'upu tau Sāmoa
Spanish
Te Reo Māori
Teaching English to Speakers of Other Languages (TESOL)

LAW

Construction Law*
International Trade*
Law

MATHEMATICS AND STATISTICS

Actuarial Science
Applied Statistics*
Data Science
Mathematics
Statistics

MUSIC AND THEATRE

Audio Production and Recording
Classical Performance
Digital Music and Audio Production
Electronic Music
Ethnomusicology*
Instrumental/Vocal Composition
Jazz Performance
Musicology*
Music/Sound*
Music Studies
Music Therapy*
Performance*
Popular Music Studies
Songwriting
Theatre

POLITICS AND PUBLIC POLICY

International Relations
Migration Studies*
Political Communication
Political Science
Public Management*
Public Policy
Strategic Studies*

PSYCHOLOGY

Brain Sciences and Mental Health
Cognitive and Behavioural Neuroscience*
Cognitive Science
Criminal Justice and Psychology
Cross-cultural Psychology*
Educational Psychology
Forensic Psychology*
Health Psychology
Māori Psychology
Mental Health Principles and Applications
Psychological Science
Work and Organisational Psychology

SCIENCE

Biology
Biomedical Science
Biotechnology
Cell and Molecular Bioscience
Chemistry
Climate Change Science and Policy
Data Science
Development Studies
Drug Discovery and Development*
Ecology and Biodiversity
Geography
Geology
Geophysics*
Human Genetics
Information Systems
Marine Biology
Molecular Microbiology*
Molecular Pathology
Molecular Pharmacology and Medicinal Chemistry
Physics
Renewable Energy Systems*
Science Communication
Science in Society
Space Science

SOCIAL SCIENCES

Area and Cultural Studies
Criminology
Cultural Anthropology
Cultures and Identities
Development Studies
Ethical Leadership and Intercultural Communication
Gender and Sexuality Studies
Global Health and Wellbeing
Globalisation, Movement and Change
Human Rights, Justice and Peace
Indigenous Studies*
Kaitiakitanga
Māori Studies
Religious Studies
Social Policy
Sociology
Study of Religion
World Affairs and Organisations
*Available at postgraduate level only.
**Available at graduate diploma level only.

STUDENT EXPERIENCE

Join our vibrant campus community and have an unforgettable Study Abroad experience. Make new friends, enjoy the Kiwi lifestyle, and have fun!

VOLUNTEERING AND GLOBAL LEADERSHIP

Join our award-winning extracurricular programmes that can enhance your intercultural awareness and help develop your leadership, social responsibility, and employability skills.

The Wellington International Leadership Programme's main themes are global leadership challenges, global interconnectedness, sustainability, cross-cultural communication, and New Zealand in the world.

www.wgtn.ac.nz/wilp

The Wellington Plus Programme encourages civic and community involvement by connecting students to a variety of volunteer experiences both on and off campus.

www.wgtn.ac.nz/wellington-plus

SPORTS AND FITNESS

Victoria University of Wellington offers a variety of sporting facilities and competitions. Join the Recreation Centre for social and competitive sports leagues. Take part in a range of events and programmes—from yoga classes and Zumba parties to first aid and self-defence courses.

www.wgtn.ac.nz/recreation

ORIENTATION

Orientation at Victoria University of Wellington is called OWeek. It's a great way to get to know the University and have fun meeting people before you start classes.

During OWeek, you'll find out about studying and living in New Zealand at the International Orientation, experience a traditional Māori pōhiri (welcome ceremony), receive a city tour, and enjoy free food and activities on campus.

www.wgtn.ac.nz/international-orientation

CLUBS AND SOCIETIES

Participate in the Clubs Expo to find out which club, group, or association might speak to you—there are more than 140 to choose from! Our clubs include Amnesty at Vic, Board Games and Roleplaying Club, Climate Action and Resistance Club, Dance Association, Disabled Students' Association, Dragon Boating, Finance and Investment Club, Kayak and Canoe Club, Sign Language Club, Tennis Club, UniQ Victoria (the Queer Students' Association), and Women in Tech.

www.wgtn.ac.nz/clubs



INTERNATIONAL BUDDY PROGRAMME

This programme connects new international students with current University students by providing a variety of free social events throughout the year. Having an international buddy will help you immerse yourself in Kiwi culture, share your own culture and experiences, and form friendships along the way.

www.wgtn.ac.nz/international-buddy

RELIGION

The University chaplains offer pastoral and practical support for all, regardless of belief. Prayer rooms are available on each campus.

www.wgtn.ac.nz/chaplains

FACILITIES AND SERVICES

The University has a comprehensive range of facilities and student services to support you during your studies and help you have the best possible student experience. These include:

- a free arrival meeting service
- an international student services team (including visa and insurance officers)
- accommodation services
- a recreation centre and gym
- religious support
- student health and counselling services
- disability services
- financial advice and support
- rainbow and inclusion services, such as a dedicated rainbow adviser, a weekly peer group, and UniQ Victoria, among others.

www.wgtn.ac.nz/international-support

ACCOMMODATION

Our halls of residence provide a safe, comfortable, and supportive living environment. Most university accommodation is within walking distance from each campus and the city centre. The University has a range of accommodation to suit your style of living. Check out some of the options below.



EVERTON HALL

A pleasant hillside setting beside the cable car for second-year students and above

- Single and twin rooms in five-bedroom apartments
- From \$285 per week plus electricity
- 5–20 minutes' walk to each campus



TE PUNI VILLAGE

A multi-level complex on Kelburn campus with stunning views from its communal areas

- Single, apartment single, or single studio
- From \$524 per week
- 2–25 minutes' walk to each campus



KELBURN FLATS—WHARE HĪNAU

Furnished self-contained houses close to Kelburn campus for second-year students and above and international students

- Single or twin-share rooms in houses
- From \$251 per week
- 5–20 minutes' walk to each campus



WHĀNAU MARAMA APARTMENTS

Situated in the heart of Wellington's vibrant city centre for second-year students and above.

- 1–2 bedroom apartments
- From \$373 per week plus electricity
- 5–20 minutes' walk to each campus

www.wgtn.ac.nz/accommodation/halls

APPLICATION DEADLINES

To secure your place in your preferred University accommodation, we recommend you apply for accommodation at the same time as you apply to study at the University or earlier.

	APPLICATIONS OPEN	APPLICANTS NOTIFIED
Trimester 1 (February)	1 August	From mid-October
Trimester 2 (July)	1 April	From mid-May

Students might not be placed in one of their initial accommodation choices. To increase your chances of getting a place in your preferred choice of accommodation, start your application early.

Students applying through a Study Abroad provider must contact that provider for details on the accommodation application process deadlines, as special arrangements may have been made between them and Victoria University of Wellington.

To find out more, go to our website.

www.wgtn.ac.nz/international-accommodation

LIVING COSTS

Your living costs will depend on your needs and habits. For 20 weeks (one trimester) in Wellington, you might need:

- essential living costs (keeping it basic but comfortable): NZ\$12,000 (\$600 per week)
- generous living costs (weekend trips and enjoying the nightlife): NZ\$16,500 (\$850 per week).



"New Zealand is the most naturally beautiful country that I have been to—it's the perfect opportunity to engage with nature.

"My favourite moments at the University were playing basketball with people from different backgrounds: Māori, Chinese, Malaysian, and others. Touring around the country with my friends was also fantastic."

Osama Syed

Davidson College, USA
Study Abroad trimester in Political Science

STUDY ABROAD OR EXCHANGE?



SCAN HERE

www.wgtn.ac.nz/study-abroad

If your home university has a formal exchange agreement with Victoria University of Wellington, you may be able to apply as an exchange student. Go to our website for a full list of exchange partner universities and talk to your home university study abroad or exchange coordinator.

www.wgtn.ac.nz/student-exchange-partners

KEY DATES

ACADEMIC YEAR	APPLICATION DEADLINE
Trimester 1 (February–July)	1 December of the previous year
Trimester 2 (July–November)	1 May

International Orientation is held the week before classes start. Each trimester has a two-week midterm break. To find out more, go to our website.

www.wgtn.ac.nz/international-deadlines

APPLY NOW

- You can find step-by-step instructions, entry requirements, and important information at www.wgtn.ac.nz/study-abroad-apply-contact
- If you are applying as an exchange student, visit your home university's international office to assist you with submitting your application.
- If you would like additional assistance with your application, you may apply through one of our overseas representatives: www.wgtn.ac.nz/agent

If you need help with the process, or have any questions, contact international@vuw.ac.nz

ENTRY REQUIREMENTS

You will need to have successfully completed at least one year of a Bachelor's degree or equivalent, with average or above average grades. If you have just finished secondary school, you may be eligible for admission through our First Year Abroad programme, depending on your high school results.

English-language requirements

If you are from a non-English speaking institution, you must provide evidence of English proficiency. Some exceptions apply.

www.wgtn.ac.nz/study-abroad-requirements

FIRST YEAR ABROAD

If you have just finished secondary school, are in your first year of university, or don't want to commit to a long-term degree, you can still choose to study abroad.

SCHOLARSHIPS FOR STUDY ABROAD

A variety of scholarships are available to Study Abroad students, including the Victoria University of Wellington Study Abroad Scholarship and Gilman Scholarships (USA).

Fees waiver for international alumni

After a trimester of study, international Study Abroad and Exchange students will join our global alumni community and will be eligible for our International Alumni Fees Waiver, a tuition fee discount for postgraduate study at Victoria University of Wellington.

www.wgtn.ac.nz/international-scholarships

CONTACT US

Wellington University International

+64 4 472 1000

international@vuw.ac.nz

www.wgtn.ac.nz/international

FOLLOW US ON SOCIAL MEDIA

[vicuniwgtn](#)

[@vicuniwgtn](#)

[@VicUniWellington](#)

WATCH OUR VIDEOS

www.wgtn.ac.nz/youtube

THE PASTORAL CARE CODE

The Government's Pastoral Care Code sets out the University's roles and responsibilities in ensuring the safety and wellbeing of all our students. This includes fostering learning environments that are safe and designed to support positive learning experiences of diverse learner groups. During your time here, you have access to a range of services and support to promote your overall wellbeing, development, and educational achievement. Read more about the code and our obligations: www.wgtn.ac.nz/support

IMPORTANT NOTICE: Te Herenga Waka—Victoria University of Wellington uses all reasonable skill and care to ensure the information contained here was accurate at the time it was prepared. However, matters covered by this publication are subject to change due to a continuous process of review, and to unanticipated circumstances. The University therefore reserves the right to make any changes without notice. So far as the law permits, the University accepts no responsibility for any loss suffered by any person due to reliance (either whole or in part) on the information contained in this publication, whether direct or indirect, and whether foreseeable or not.

© Victoria University of Wellington 2024