

Australia's



**university for
employment
outcomes**

Acknowledgement of Country.

UNSW is located on the unceded territory of the Bidjigal (Kensington campus), Gadigal (City and Paddington Campuses) and Ngunnawal peoples (UNSW Canberra) who are the Traditional Owners of the lands where each campus of UNSW is situated.



Progress starts with you

The world faces monumental challenges. It always has. But if you look around, progress is everywhere. People are coming together, creating a better future. From public health, to climate science and sustainable cities, to human rights, the progress we make together can improve people's lives worldwide.

You may not know what, how or why yet, but your unique potential, interests and drive will be the key to unlocking solutions to real issues. Guided by our academics, you'll be supported along your learning journey to build on your strengths and identify opportunities that will shape your interests into a career that's meaningful to you.

Discover the progress you can make, with UNSW Sydney.



Global top 20 university

Ranked equal 2nd university in Australia and equal 19th globally.

QS World University Rankings, 2024



Most employable graduates

Ranked 1st in Australia and 29th globally for employment outcomes.

QS World University Rankings, 2024



Highest graduate salaries

Highest median graduate salaries of Go8 universities.

QILT Graduate Outcomes Survey (medium-term), 2022

Your guide goes beyond these pages. Dive into new videos, articles, events and more at unsw.to/international-students

Australia's most employable graduates

UNSW has strong connections with many different industries, and provides great opportunities to get practical career experience.

–
Siqi Guo, Bachelor of
Commerce (Business
Analytics)



Australia's no. 1 university for employment and career outcomes

Australian Financial Review Best
Universities Ranking, 2023

QS World University Rankings, 2024



Most employable students for five years in a row

Australian Financial Review Top 100
Future Leaders Awards, 2020, 2021, 2022,
2023 and 2024



Highest median graduate salaries of Go8 universities

QILT Graduate Outcomes Survey, 2022

At UNSW we are incredibly proud that our graduates are recognised as the most innovative, creative and entrepreneurial in Australia.*

By joining Australia's Most Employable University* you will become part of our global community of adaptable and workforce-ready graduates across 140 countries. Along with the work-ready skills you will develop, this professional network will travel with you for life to help accelerate and shape your career.

Your tailored employability roadmap

When it comes to getting career-ready, there is no universal approach. UNSW Employability is a service all UNSW students have access to. We offer coaching, mentoring and real-world experiences that support your unique career goals and enable you to become a global graduate.

Build your personal employability through internships, work integrated learning, industry networking, leadership development, co-curricular programs and tailored career planning workshops.

Visit unsw.edu.au/employability

*QS Graduate Employability Rankings, 2022





Design your university experience

Uni life, your way

UNSW 3+ has three terms each year, commencing in February, May and September, with an optional summer term each January. Each term in the UNSW 3+ calendar has ten teaching weeks.

UNSW 3+ is uniquely designed to give you the flexibility to structure your studies around your goals.



Flexible study structure

Spread your study load out with fewer courses per term^a to enable deeper learning and create time for extra-curricular activities, work and other priorities.



Industry opportunities

Internships and practicums integrate into the 3+ structure. Set yourself apart with industry experience through Work Integrated Learning (WIL), without extending your degree.



Global connections

Aligned to the Northern Hemisphere university calendars, 3+ enables you to study abroad without extending your studies. Explore short courses, internships or exchange at 300+ international partners.

Your tailored 3+ timetable

With 3+ there are multiple ways to vary your study load, so your timetable works for what you want to achieve. For example:

- **Standard option**
The standard full-time load is eight courses per year, spread over three terms.
- **Experiences option**
Gain real-world experiences, like exchange and Work Integrated Learning (WIL), without extending your degree.
- **Early finish option***
Add one extra course per year to finish one term early and dive into your career.

Explore more ways to design your calendar to work for you. Visit unsw.to/terms

*Early completion of your program may impact your stay on an Australian Student Visa. Visit unsw.to/visa-information

^aMinimum study load requirements as per your Australian Student Visa conditions must be maintained.



3rd

most desirable place
to live and study in
the world

QS Best Student Cities
(Desirability), 2024



4th

safest city in
the world

The Economist Intelligence
Unit's Safe Cities Index, 2021



4th

most liveable city
in the world

The Economist Intelligence
Unit's Global Liveability
Index, 2023



Scan the QR code
to explore what
life looks like as
an international
student in Sydney
and get useful
tips on moving
to Sydney.

Welcome to UNSW Sydney

Live in the heart of everything

UNSW's main campus is located in Kensington, a friendly, multicultural inner-city suburb ideally located between the beach and the city, so you'll get the best of what Sydney has to offer.

Explore Sydney city by light rail in just 20 minutes, or visit beautiful Coogee beach just 8 minutes away by bus.

There are a variety of restaurants, shops, healthcare services and amenities around campus that will meet your everyday needs.

Get the full experience

With access to all our student support services, you'll feel safe and welcome at UNSW from the moment you arrive.

We offer a free airport pick-up service and Cultural Mentoring Program to commencing international students to help you settle in Sydney smoothly.

Get personalised advice on university life, wellbeing and academic performance from our Student Support Advisers, and develop academic skills via our study and academic language support. We also offer financial assistance to support you in coping with unexpected situations.





©Destination NSW

Explore our campus



Scan the QR code and join us for an ultimate campus tour to explore our campus and its surroundings. See where you'll be eating, sleeping, playing and studying when you are in Sydney.

Grow outside the classroom

Studying abroad is not just about learning in classes. You will meet people from all around the world, explore your true self in a different culture and develop your own vision of the world.

At UNSW, you can step away from the books with Arc, our student-led organisation and home to more than 300 clubs, year-round events, sports, volunteering opportunities, health and wellness sessions...the list goes on.

Make your friends at arc.unsw.edu.au

Make yourself at home on campus

Feel at home with a range of award-winning accommodation on and off campus at UNSW.

We offer residential colleges that provide a truly inclusive and supportive environment that fosters academic excellence, community participation and social engagement. Our on-site teams are on hand to provide academic guidance and personalised wellbeing support. If you want a bit more self-space, UNSW apartments provide an independent, self-sufficient style of living.

UNSW-operated accommodation prices include furniture, Wi-Fi and utility bills, with options for catering in our colleges.

Find your home at unsw.to/accommodation



Your journey starts here

Scholarships rewarding your ambition

UNSW is where ambitious and high-achieving students from around the world study and succeed. We offer scholarships up to the full amount of tuition fees for international students to empower them to realise their potential.

Our scholarships are not just based on your grades – UNSW also values leadership skills, extracurricular interests and your passion to study with us.

Be sure to explore scholarship opportunities available to you and take note of our scholarship deadlines at scholarships.unsw.edu.au

Entry requirements

To gain entry to UNSW, you will need to meet both academic and English language requirements.

Academic entry requirements

We accept a number of secondary/tertiary education qualifications, including:

- High school studies (for undergraduate programs) or undergraduate studies (for postgraduate programs)
- UNSW College pathway programs
- Recognised prior study
- University transfer

English language requirements

If English is not your first language you will need to provide proof of English proficiency at the time of application.



A huge burden was lifted off my shoulders when I received the scholarship offer. I can focus better on my studies and my involvement in different student clubs at UNSW.

–
Aziz Mehedi, UNSW International Scientia Coursework Scholarship Recipient 2020



Scan the QR code to understand **entry requirements** and **fees** for international students and check if you are eligible for direct entry to UNSW.

Progress to your dream degree via UNSW College

If you do not meet the entry requirements for your preferred UNSW degree, UNSW College can help you get there via pathway programs.

Pathway programs are designed to prepare you for success at university. You will gain the academic knowledge and English language skills needed to meet the entry requirements to a university degree. You will receive support from our expert teachers and staff, so you progress to UNSW with confidence.

Diplomas

Learn the same content as First-Year UNSW Sydney students in this 12-month program and progress directly to the Second Year of a UNSW bachelor's degree in **Architecture, Business, Computer Science, Engineering, Media and Communication** or **Science**.

Foundation Studies

A Foundation Studies program is your supportive pathway to the First Year of any UNSW degree. UNSW College offers a range of programs from 4 to 15 months, dependent on your ability, to help build your academic and English skills.

Academic English

Build your English skills for entry into Diploma and Foundation Studies programs or directly prior to your chosen UNSW degree.

Pre-Masters

Enhance your critical thinking, academic writing, project management, research, and communication skills to succeed in the future. Progress to a master's degree in **Engineering, Engineering Science** or **Information Technology** at UNSW with a 15-week Pre-Masters Program.

Find your path to your desired UNSW degree and apply to a UNSW College pathway program at unswcollege.edu.au



UNSW College will continue to deliver the UNSW Foundation Studies and Diploma Programs on behalf of UNSW Sydney for students who have current UNSW Sydney offer letters or have already commenced their studies. UNSW Sydney has now ceased making offers to international students seeking to enrol in the UNSW Foundation Studies and Diploma programs. All prospective international students wishing to enrol in a Foundation Studies or Diploma program will have to apply directly through UNSW College. UNSW College Foundation Studies and Diploma programs are identical to the UNSW Sydney Foundation Studies and Diploma programs, with the same entry requirements, and still lead directly into UNSW Sydney degrees (subject to applicants meeting the relevant degree entry requirements).

UNSW Global Pty Limited ABN 62 086 418 582 trading as UNSW College™. UNSW College™ currently delivers Diplomas and Foundation Studies on behalf of UNSW Sydney - CRICOS Provider Code 00098G; UNSW Sydney TEQSA Provider ID: PRV12055 (Australian University). From 26 August 2024, UNSW College™ will commence delivery of Diplomas and Foundation Studies under its own CRICOS Provider Code - 01020K and TEQSA Provider ID: PRV13020 (Institute of Higher Education). From 6 May 2024, UNSW College™ will commence delivery of the Pre-Masters Program under CRICOS Provider Code 01020K and TEQSA Provider ID: PRV13020 (Institute of Higher Education). UNSW College™ delivers Academic English under CRICOS Provider code 01020K and TEQSA Provider ID: PRV13020 (Institute of Higher Education). See unswcollege.edu.au/esos for more information. © 2024 UNSW Global Pty Limited

Studying with us

As a member of the Group of Eight (Go8), we are one of the most prestigious universities in Australia providing world-class education to the most ambitious students from all over the globe.

> Step 1

Find your degree

Choose your program at unsw.to/degrees and make a note of the program code.

> Step 2

Check entry requirements

Check that you meet the academic and English language requirements.

> Step 3

Submit your application

Submit your application at applyonline.unsw.edu.au/login or apply via an official UNSW agent.



Scan the QR code to find out more about how to apply to UNSW and what is next once you submit your application.

Assumed knowledge

We do not have formal subject prerequisites for any of our degrees. Our degrees have 'assumed knowledge', which will help ensure you are off to a strong start in your first year. If you have not studied the assumed knowledge subjects, it will not stop us from making you an offer, but we strongly recommend bridging courses if you do not have the assumed knowledge for your degree of interest.

You can find the assumed knowledge for all degrees at unsw.to/degrees



Follow your interests

We have hundreds of degrees and double degree combinations that will prepare you with the skills and experience to drive local and global impact. Discover what fields interest you and how they can channel your passion into making a difference.



Scan the QR code to explore our degrees in your field of interest and see how we can help shape your unique career path.



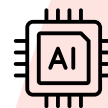
Built Environment

Improve the built environment for people and the planet with a degree in **Architectural Studies, Construction Management, Engineering or Science.**



Creativity

Bring creative solutions to life with a degree in **Arts, Architectural Studies, Commerce, Design, Engineering, Fine Arts or Law.**



Data, Technology and AI

Make an impact on everyday life with a degree in **Commerce, Computer Science, Design, Information Systems, Law or Science.**



Environment

Turn your passion into action with a degree in **Arts, Education, Engineering, Science or Politics.**



Health

Improve wellbeing with a degree in **Engineering, International Public Health, Psychological Science, Science or our Professional Health programs.**



Social Progress

Make a social impact with a degree in **Arts, Criminology & Criminal Justice, Economics, International Business, Law or Psychological Science.**

Discover the right degree for you

The below list is a good start for you to explore the right UNSW degree for you. You can find a full list of degrees at unsw.to/degrees

Arts, Design & Architecture

Undergraduate programs:

- Architectural Studies
- Arts (30+ specialisations)
- City Planning (Hons)
- Construction Management & Property
- Design (3 specialisations)
- Education (Primary) (Hons)
- Education (Secondary)
- Fine Arts (4 specialisations)
- Interior Architecture (Hons)
- Landscape Architecture (Hons)
- Media (5 specialisations)
- Politics, Philosophy & Economics
- Social Sciences
- Social Work

Postgraduate programs:

- Animation and Visual Effects
- Applied Linguistics
- Architecture
- City Planning
- Construction Project Management
- Curating & Cultural Leadership
- Design
- Development Studies
- Education
- Educational Leadership
- Environmental Management
- International Relations
- Journalism and Communication
- Landscape Architecture
- Public Relations & Advertising
- Property and Development
- Public Policy and Governance
- Simulation and Immersive Technologies
- Teaching (Primary)
- Teaching (Secondary)
- Translation and Interpreting

Business School

Undergraduate programs:

- Actuarial Studies (3 optional specialisations)
- Commerce (14 specialisations)
- Commerce (International) (14 specialisations)
- Economics (3 optional specialisations)
- Information Systems

Postgraduate programs:

- Actuarial Studies
- Applied Economics
- Business Administration (MBA)
- Commerce (14 specialisations)
- Finance
- Financial Analysis
- International Business
- Professional Accounting
- Taxation

Engineering

Undergraduate programs:

- Advanced Computer Science
- Computer Science (8 specialisations)
- Engineering (Civil with Architecture) (Hons)
- Engineering (Hons) (18 specialisations)
- Engineering (Hons)/Master of Biomedical Engineering
- Engineering (Hons)/Master of Electrical Engineering
- Food Science (Hons)

Postgraduate programs:

- Computing
- Engineering (8 specialisations)
- Engineering Science (22 specialisations)
- Engineering Science/Commerce (23 specialisations)
- Food Science
- Information Technology (6 specialisations)
- Information Technology/Commerce (20 specialisations)
- Mining

Law & Justice

Undergraduate programs:

- Combined Law (20 double degree options available)
- Criminology & Criminal Justice

Postgraduate programs:

- Juris Doctor
- Laws (8 specialisations)

Medicine & Health

Undergraduate programs:

- Applied Exercise Science/Master of Clinical Exercise Physiology
- Exercise Science/Master of Physiotherapy and Exercise Physiology
- International Public Health
- Medical Studies/Doctor of Medicine
- Nutrition/Master of Dietetics and Food Innovation
- Pharmaceutical Medicine/Master of Pharmacy
- Vision Science/Master of Clinical Optometry

Postgraduate programs:

- Global Health (6 double degree options available)
- Health Data Science
- Health Leadership & Management (6 double degree options available)
- Infectious Disease Intelligence (6 double degree options available)
- Public Health (6 double degree options available)

Science

Undergraduate programs:

- Advanced Mathematics (Hons) (3 specialisations)
- Advanced Science (Hons) (24 specialisations)
- Aviation (Flying)
- Aviation (Management)
- Biotechnology (Hons)
- Data Science and Decisions
- Engineering (Hons) (Material Science and Engineering)
- Environmental Management (6 specialisations)
- Medical Science (9 specialisations)
- Psychological Science (7 optional specialisations)
- Psychology (Hons)
- Science (27 specialisations)

Postgraduate programs:

- Aviation Management
- Financial Mathematics
- Marine Science and Management
- Materials Technology
- Mathematics
- Statistics



Double degrees

double your impact

This list is just the beginning. With over 100 double degree options to choose from you can combine your interests and carve out a unique career path connected to your talents and passions.

Find all double degree combinations at unsw.to/degrees or learn more about double degrees at unsw.to/double-degrees

Contact us

UNSW Future Students



UNSW Sydney
Sydney NSW 2052
T: +61 2 9385 1844
E: futurestudents@unsw.edu.au
W: unsw.edu.au/study

Social media

      @UNSW

 @ozunsw

 @university-of-new-south-wales

  i.youku.com/i/UNDQzNDA10Tk4NA==

 WeChat ID: UNSW_Australia



Scan the QR to contact us.

Applying to UNSW

Apply Online
apply.unsw.edu.au

Degree Finder
unsw.to/degrees

UNSW College
unswcollege.edu.au

CRICOS Provider Code: 01020K

UNSW Scholarships
scholarships.unsw.edu.au

Student services

Accommodation
unsw.to/accommodation

Arc, UNSW's student organisation
arc.unsw.edu.au

UNSW Employability

unsw.edu.au/employability

Academic Skills
student.unsw.edu.au/skills

English Language Support
student.unsw.edu.au/english

International Student Support
student.unsw.edu.au/international

Government resources

Student visas
immi.homeaffairs.gov.au

Australia Awards
australiaawards.gov.au

Australian diplomatic missions
dfat.gov.au/mission

UNSW Future Students Staff

UNSW has an extensive international network of staff and agents.

UNSW China Centre

1687 Changyang Rd, Yangpu District, Shanghai, China
T: +86 21 6288 5993
E: china@unsw.edu.au

UNSW India Centre

514-515, 5th Floor, E-Block International Trade Tower, Nehru Place New Delhi 110019, India
T: +011 4019 0839
M: +91 9953 863747
E: india@unsw.edu.au

UNSW Indonesia Centre

(by appointment)

Menara Karya 28th Floor, Suite 26, JL. HR. Rasuna Said Blok X-5, Kav 1-2, Kuningan, Jakarta Selatan Indonesia

Nur Fatmah Syarbini

T: +62 21 5789 5856
M: +62 811 813 7052
E: n.syarbini@unsw.edu.au

Stefen Yungpriady

T: +62 813 8478 5804
E: s.yungpriady@unsw.edu.au

Yulita Tjahjono

T: +62 851 8667 1127
E: yulita.tjahjono@unsw.edu.au

Malaysia, Brunei, Singapore

Soon Choo Chua
T: +60 3 3319 2811
E: soonchoo.chua@unsw.edu.au

Thailand

Kakanang Kittikovit (Wahn)
T: +66 905 924 246
E: k.kittikovit@unsw.edu.au

Mekong

Thanh-Thao Ngo
T: + 84 906 233 447
E: thanhthao.ngo@unsw.edu.au

Vietnam

Hai Ha Hoang
T: + 84 962 042 544
E: hai_ha.hoang@unsw.edu.au

Americas, Philippines, Pakistan, New Zealand, UK and Europe

Julian Nicholls

T: +61 2 9385 8428
E: julian.nicholls@unsw.edu.au
Whatsapp: +61 431 310 070

Hong Kong and North Asia

Frankie Yau
T: +852 9822 1231
E: frankie.yau@unsw.edu.au

International students in Australia

Anthony Badgery
T: +61 422 763 788
E: a.badgery@unsw.edu.au

Africa, Middle East & CIS Countries

Alex Weightman
T: +61 414 040 781
E: a.weightman@unsw.edu.au

West Africa

Abimbola Rotimi
T: +234 806 292 6244
E: a.rotimi@unsw.edu.au

Middle East

Rory Edmunds
T: +61 447 329 959
E: r.edmunds@unsw.edu.au

UNSW agents

Find a local UNSW agent in your country, visit unsw.to/agents



Contact us at the Future Students Office for advice, or use the QR code to ask a question.

 unsw.edu.au/ask

DISCLAIMER: UNSW programs, courses and any arrangements for programs and fees including staff allocated, as stated in the guide or any other University publication, announcement or advice of the University, are an expression of intent only and are not to be taken as a firm offer or undertaking. The University reserves the right to make alterations to any matter contained within this publication without notice. Information in this Guide is accurate as of January 2024, but may be amended without notice by the University. All costs and fees are provided in Australian Dollars (AUD\$). Any agreement with the University does not remove the right to take action under Australia's consumer protection laws.


FSC
www.fsc.org
MIX
**Paper | Supporting
responsible forestry**
FSC® C010615

Discover your full UNSW experience

Scan the QR code to explore our campuses, facilities, services, degrees and more in our full International Undergraduate Guide and International Postgraduate Guide.



Top 20 in the world

QS World University Rankings, 2024



1st in Australia for employment outcomes

QS World University Rankings, 2024



Highest median graduate salaries of Go8 universities

QILT Graduate Outcomes Survey, 2022



UNSW
SYDNEY