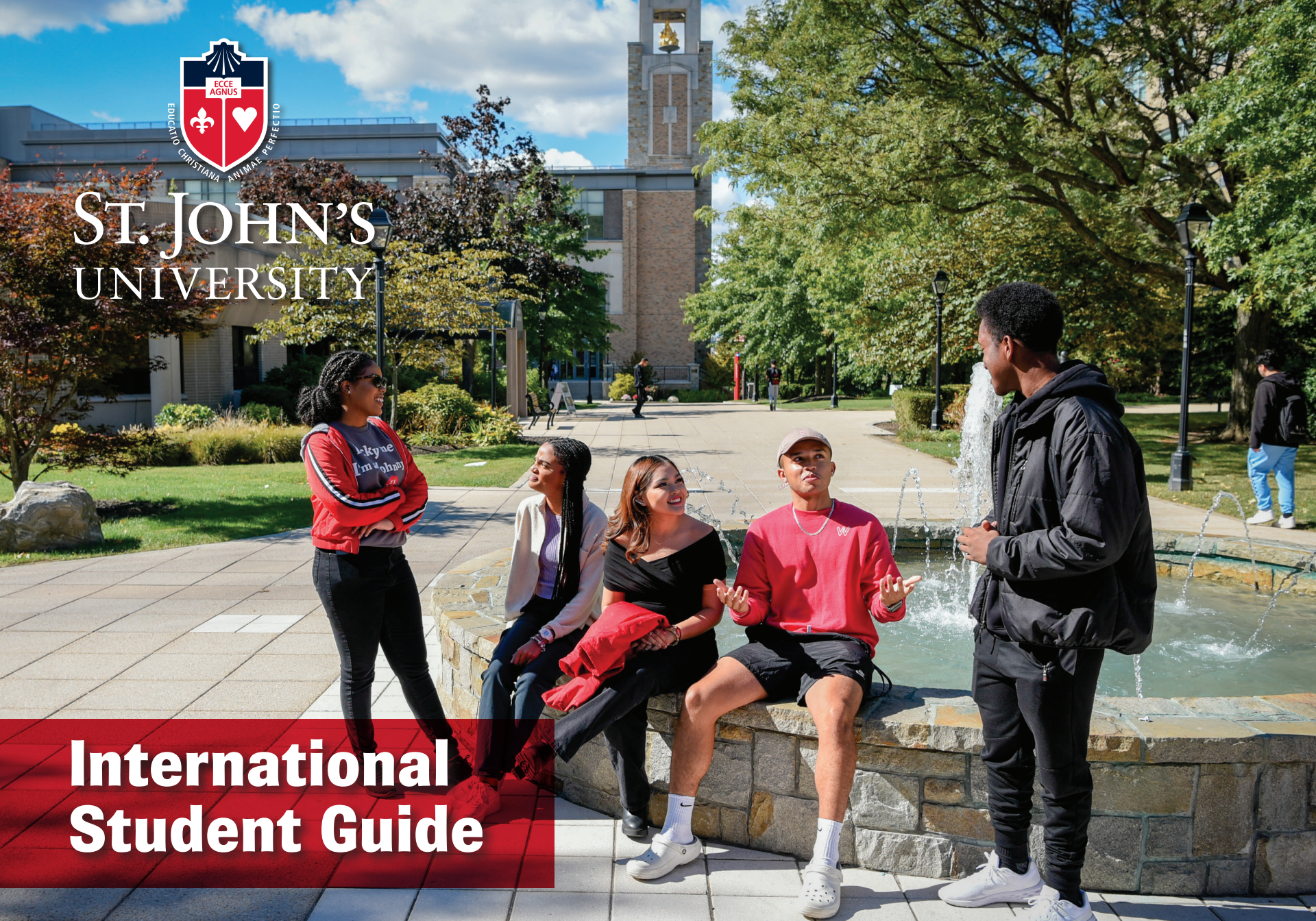




# ST. JOHN'S UNIVERSITY

## International Student Guide





# A Great Place to Call Home.

Founded in 1870 by the Vincentian community, St. John's University is a private, Catholic university in New York City that celebrates diversity in all of its forms. St. John's is home to 645 international students from 119 countries worldwide, representing many different nationalities, cultures, and faith traditions. Programs, student organizations, and activities reflect this ethos, as well as the University's focus on fighting poverty and injustice—a pillar of our mission. Our Queens and Manhattan, NY, campuses offer access to the area's renowned cultural, media, government, culinary, and business resources. Students choose from more than 100 bachelor's, master's, and doctoral degrees in seven distinguished divisions.

ST. JOHN'S  
IS HOME TO **645**

INTERNATIONAL STUDENTS FROM

**119** COUNTRIES WORLDWIDE,  
REPRESENTING MANY  
DIFFERENT NATIONALITIES,  
CULTURES, AND FAITH  
TRADITIONS.

**St. John's College of Liberal Arts and Sciences** offers majors in the humanities, social sciences, and natural and applied sciences. The Media Arts and Design Lab provides you with highly equipped, professional-level, Mac Pro work stations with Cintiq tablets—which are used in 3D modeling, illustration, and more.



**The Lesley H. and William L. Collins College of Professional Studies** combines a strong liberal arts foundation with real-world experience through internships with companies like Major League Baseball, the Federal Bureau of Investigation, and the Madison Square Garden Entertainment Corp. With its new suite of learning spaces, including the Homeland Security/Emergency Management Simulation Lab, you learn with state-of-the-art technology.



**The Peter J. Tobin College of Business**, with double accreditation by the prestigious AACSB International (the Association to Advance Collegiate Schools of Business), offers outstanding connections to New York's elite business community.



**The School of Education** prepares tomorrow's teachers, counselors, and administrators by providing a vibrant learning environment for their intellectual, professional, and moral development.



COMING SOON

## A NEW HOME FOR HEALTH SCIENCES AND NURSING

Opening in Fall 2024, the St. Vincent Health Sciences Center will usher in a new era of health science education at St. John's. The building will be home to current health science programs and new and emerging programs. It will include classrooms, labs, simulation facilities, common areas, and an outdoor terrace.



**The College of Pharmacy and Health Sciences** prepares you for a challenging career as a pharmacist, physician assistant\*, medical technologist, and more. Labs are equipped with the latest technology, including an Anatomage Table.



**The Institute for Biotechnology\*** melds disciplines such as microbiology, biochemistry, and the pharmaceutical sciences, preparing you for a career in clinical labs and large pharmaceutical companies.



*\*Graduate programs only*

**St. John's School of Law\*** prepares you to become an expert in US law. You can practice in your home country or take the New York bar examination.





# Campuses and Global Locations

The Queens and Manhattan campuses are located near city bus and/or subway stops for easy commuting. These campuses offer you access to vibrant neighborhoods that are linked to the rest of the city by one of the world's great mass transit systems. In short, with St. John's, all of New York City awaits you.

The Queens residential campus is located in a suburban community, where Public Safety is on campus and available 24/7. Health and wellness programs are offered to help students from all over the world acclimate to college life in the United States.



## New York City

### MANHATTAN

This 71,000-square-foot campus in Manhattan's famous Greenwich Village neighborhood boasts state-of-the-art connectivity, the Kathryn and Shelby Cullom Davis Library, and a location that is easily accessible by mass transit.



### QUEENS

A short distance from Manhattan, our 102-acre Queens campus features beautiful lawns, modern residence halls, state-of-the-art facilities, and the finest academic resources.



### ROME, ITALY

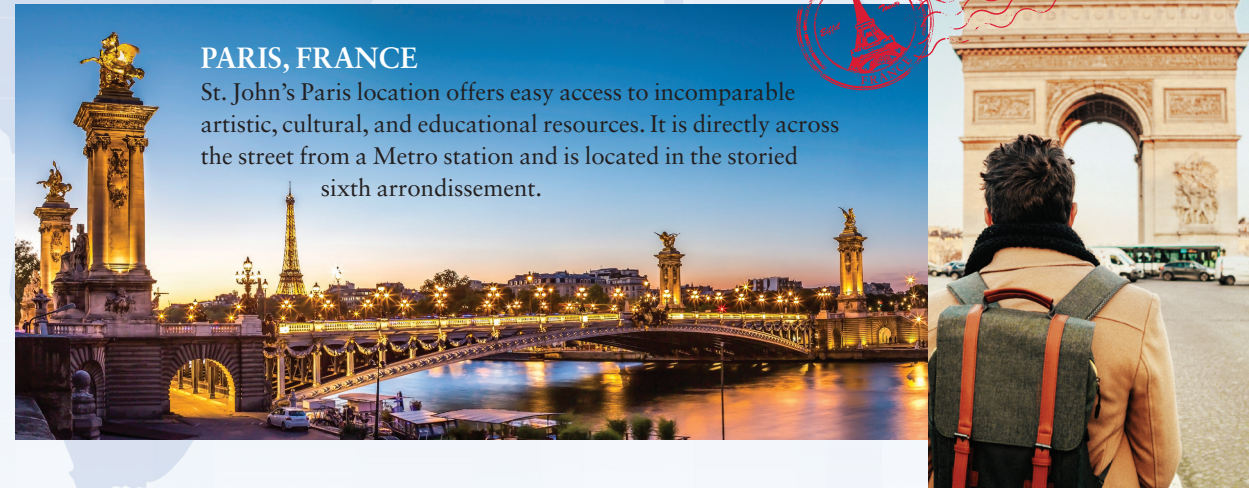
Situated in the Prati neighborhood, in the heart of the Eternal City, our Rome campus offers immediate access to cultural and artistic treasures and features a historic facility with updated amenities.



## Europe

### PARIS, FRANCE

St. John's Paris location offers easy access to incomparable artistic, cultural, and educational resources. It is directly across the street from a Metro station and is located in the storied sixth arrondissement.



### LIMERICK, IRELAND

St. John's partnership with Mary Immaculate College, a vibrant Catholic college on 25 acres, provides a unique experience for St. John's students participating in the Western Europe Semester program.



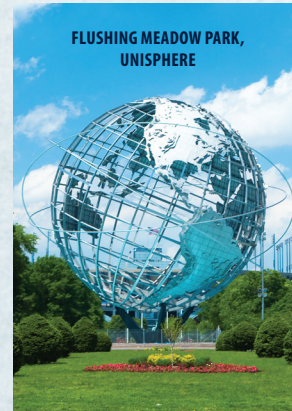
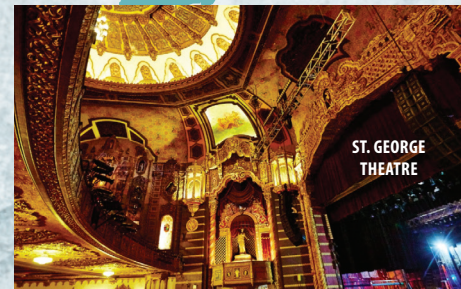
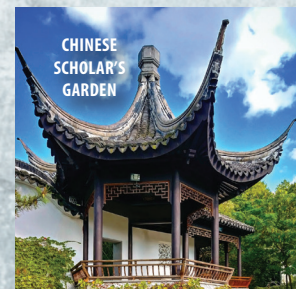


# The New York City Experience

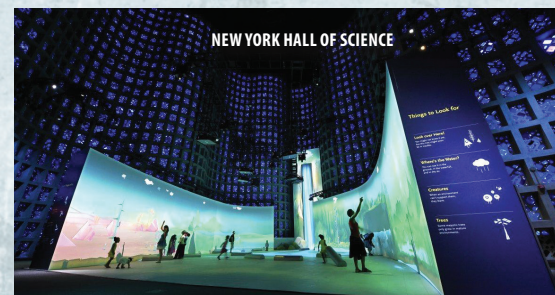
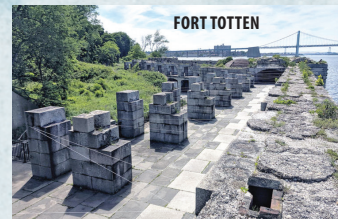
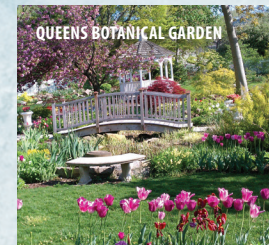
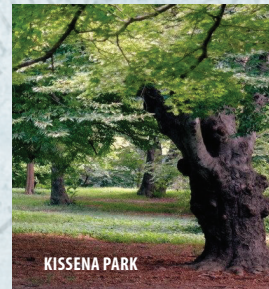
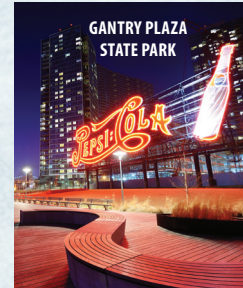
Whether you live on our Queens campus in the Residence Village as a first-year student or sophomore or the adjacent Founder's Village Townhouses as a junior or senior, or you choose to live off-campus in one of our nearby apartments for upper-class students, our tight-knit St. John's community quickly becomes your home away from home.

When you're not in a classroom, a lab, or studying for an exam, there's plenty to do on and around our 102-acre campus. In fact, you will never be bored with more than 180 student clubs and organizations on campus, easy access to Manhattan's restaurants and museums, and countless hidden gems in and around Queens.

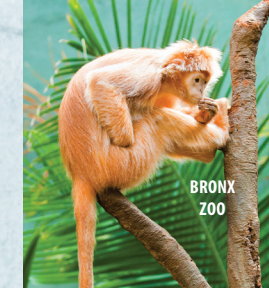
## Staten Island



## Queens



## Bronx



## Brooklyn

## Manhattan







## WEATHER

In July, summer temperatures average 76.5°F (24.7°C), although heat waves in the 90s and high humidity are not unusual. The average temperature in January, our coldest month, is 32.1°F (0.1°C). Spring and autumn are usually moderate and pleasant.

# Student Support at St. John's

## CENTER FOR STUDENT SUCCESS

This center is a one-stop hub of resources for first-year students that includes academic and career advising, academic achievement resources and tutoring, mentoring, and other first-year transition programs.

## ENGLISH LANGUAGE INSTITUTE

As part of the University's commitment to student success, the English Language Institute (ELI) offers intensive English as a Second Language courses, ranging from beginner to university preparatory level. Students with conditional admission can satisfy their language proficiency requirements by completing the appropriate level of the ELI. For more information, email [esl@stjohns.edu](mailto:esl@stjohns.edu) or visit [www.stjohns.edu/ELI](http://www.stjohns.edu/ELI).

## INTERNATIONAL HOUSING INITIATIVE

On the Queens campus, live side-by-side with like-minded students in our resident facilities. Take advantage of the University's amenities, support services, and on-campus recreational activities.

## INTERNATIONAL STUDENT AND SCHOLAR SERVICES (ISSO)

ISSO works with colleagues from throughout the University to make St. John's a supportive home to international students. Their team supports students with every aspect of life and learning in the US and also assists with the I-20 application process. For more information, email [ISS@stjohns.edu](mailto:ISS@stjohns.edu).

## PROJECT AIM

Project AIM is a nine-month peer mentoring program offering support to international first-year students—including assistance with college transition, adjusting to life in the US, and succeeding academically and with career development—through a social and intellectual learning environment outside of the classroom.

## SERVICE AND MISSION

Students logged nearly 140,000 service hours in one year alone through programs such as the Campus Ministry Plunge Program and Midnight Runs, tending to the University's organic garden, and so much more.

## TRANSFER ADMISSION AND ADVISEMENT

The Office of Transfer Admission and Advisement provides transfer students with guidance during their transition to St. John's University. You speak with a professional adviser concerning your academic and personal goals, as well as potential credits granted, various course options, and the registration process.

## UNIVERSITY LEARNING COMMONS (ULC)

The ULC provides academic support through peer and professional tutoring in many subjects and in general study skills.

## UNIVERSITY WRITING CENTER

Services include face-to-face consultation and e-tutoring to assist with writing assignments across all disciplines, experience levels, and backgrounds.

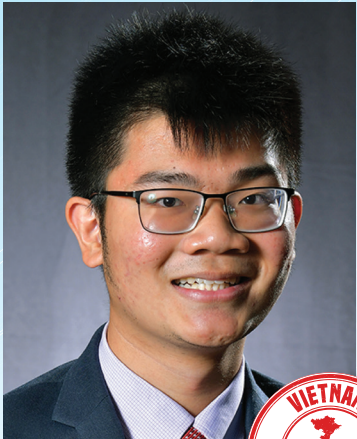


# Success Stories



*"Overall, St. John's University played a critical role in my professional development. The Master of Science in Enterprise Risk Management program gave me valuable skills and knowledge that are crucial for success and growth in my career and current employment."*

**OLEKSANDRA "SASHA" ARKHANGEL'SKA**  
*M.S. in Enterprise Risk Management*  
The Peter J. Tobin College of Business  
Germany



*"St. John's always offers opportunities for those who seek them and who immediately act on them. I will always think of St. John's as a place where, in addition to receiving a great education, I grew in my faith, was able to serve others, and where I created a wonderful second family."*

**HUY LE**  
*B.S. in Actuarial Science*  
The Peter J. Tobin College of Business  
Vietnam



*"The Department of Pharmaceutical Sciences' exciting courses, great faculty, and especially the versatile research happening in terms of novel drug/gene delivery systems in the field of oncology, drew me to St. John's."*

**AISHWARYA SARASWAT**  
*Ph.D. in Pharmaceutical Sciences*  
College of Pharmacy and Health Sciences  
India



*"Opportunity for student involvement on campus was a major criterion for my college selection—and St. John's Queens, NY, campus has it in abundance! Also, Queens is such a melting pot of cultures and peoples."*

**JOEL STEPHEN**  
*B.S. in Management*  
The Peter J. Tobin College of Business  
Trinidad

## Undergraduate Majors and Programs of Study

- |   |  |  |
|---|--|--|
| Accounting  | Cyber Security Systems                           | Liberal Studies                          |
| Actuarial Science   | Economics (B.A.)                                 | Management                               |
| Administrative Studies  | Economics (B.S.)                                 | Marketing                                |
| Adolescent Education  | English  | Mathematical Physics                     |
| Advertising Communication   | Enterprise Regulation Profit and Non-Profit      | Mathematics (B.A.)                       |
| • Account Management  | Environmental Science                            | Mathematics (B.S.)                       |
| • Creative  | Environmental Sustainability and Decision Making | Networking Systems                       |
| Anthropology  | Fashion Studies                                  | Nursing                                  |
| Art History   | Finance  | Pharmacy (six-year Pharm.D.)             |
| Asian Studies   | Fine Arts  | Philosophy                               |
| Biochemistry  | French   | Photography                              |
| Biology   | Gaming Development and Emerging Media            | Physical Science                         |
| Biology/Optomtry (seven-year program affiliated with SUNY College of Optometry) | Global Development and Sustainability            | Physics                                  |
| Biomedical Sciences   | Government and Politics                          | Psychology                               |
| Business Administration   | Graphic Design                                   | Public Administration and Public Service |
| Business Analytics  | Health and Human Services                        | Public Relations                         |
| Business (Interdisciplinary)  | • Healthcare                                     | Radiological Sciences                    |
| Chemistry   | • Human Services                                 | Risk Management and Insurance            |
| Childhood Education, Grades 1–6   | Healthcare Informatics                           | Sociology                                |
| Clinical Laboratory Sciences  | History  | Spanish                                  |
| Communication Arts  | Homeland Security                                | Speech-Language Pathology and Audiology  |
| Communication Studies   | Hospitality Management                           | Sport Management                         |
| Computer Science  | Illustration                                     | • Business                               |
| Computer and Machine Learning   | Information Technology                           | • Coaching                               |
| Criminal Justice  | International Management                         | Television and Film Studies              |
| • Forensic Psychology   | Italian  | Theology                                 |
| Critical Race and Ethnic Studies  | Journalism                                       | Toxicology                               |
|   | Legal Studies                                    | Undecided                                |

**We also offer more than 35 dual-degree programs!**  
**[www.stjohns.edu/majors](http://www.stjohns.edu/majors)**

MORE THAN  
**100**  
MAJORS AND  
PROGRAMS OF STUDY







## Career Outcomes

A St. John's degree leads to professional success. In fact, career services are central to a St. John's education and our vast alumni network offers extensive internship and job opportunities at leading companies around the world. You will graduate with the knowledge, preparation, and experience to succeed in your chosen field.



**198K+**  
LIVING ALUMNI  
(FALL 2023)

**95.9%**  
OF ST. JOHN'S GRADUATES  
WOULD RECOMMEND  
ST. JOHN'S UNIVERSITY.\*

**\$60,718**  
STARTING SALARY/  
OVERALL MEAN AVERAGE\*

## Continuing Education—Top Universities\*

Columbia University  
Fordham University  
Georgetown University  
New York Law School

New York University  
Northwestern University  
Pennsylvania State University  
University of Notre Dame

## Recent Internship Opportunities\*



\*The data is representative of the three graduating classes (i.e., September 2021, January 2022, and May 2022) from the three main campuses (i.e., Queens, Staten Island, and Manhattan). It pertains only to the 70 percent of undergraduates who responded to the survey.



# Undergraduate Scholarship Opportunities

## INTERNATIONAL UNDERGRADUATE SCHOLARSHIP OPPORTUNITIES

**Academic Merit Scholarships**—St. John’s University is pleased to offer merit-based scholarships to first-year, full-time undergraduate students who enroll in a bachelor’s-level degree program for the Fall 2025 term. The admission application is used to automatically determine merit scholarship eligibility; no additional application is required.

**Application Scholarships**—International students are eligible for Catholic School, Catholic Scholar, and Ozanam scholarships. To learn more, visit [www.stjohns.edu/scholarships](http://www.stjohns.edu/scholarships).

**Transfer Merit Scholarships**—Transfer students must have earned a minimum of 12 credits from an accredited institution of higher learning and must have an average grade point average (GPA) of over 2.0.

## ADDITIONAL GRANT AND AWARD OFFERS

### Fall 2025 Engagement Grant

First-year students and new undergraduate transfer students who attend the St. John’s University Accepted Student Day in April 2025 receive a one-time tuition grant of \$250 toward the 2025–26 academic year.

In addition, new first-year students and new undergraduate transfer students are also eligible to receive a one-time tuition grant of \$250 by attending a qualifying event between June 1, 2024, and May 1, 2025. Qualifying events include Open House, on-campus tours, and spotlight events.

NO ADDITIONAL APPLICATION IS REQUIRED FOR ACADEMIC MERIT SCHOLARSHIP CONSIDERATION.

99% OF UNDERGRADUATE STUDENTS RECEIVED FINANCIAL AID IN THE 2022–23 ACADEMIC YEAR.

Students are limited to a maximum of \$500 in Engagement Grant funding for the 2025–26 academic year, but are encouraged to attend as many Admission events as possible. Advance registration for events is encouraged and available online at [www.stjohns.edu/Visit](http://www.stjohns.edu/Visit).

### Fall 2025 First-Time, First-year Future Johnnie Award

First-year students and new undergraduate transfer students who submit their undergraduate admission application and all required credentials, as well as meet the deposit deadline, are eligible to receive a one-time \$500 award, which will be credited to their St. John’s University StormCard during the 2025–26 academic year.

### First-time, First-year Student Deadlines

Application deadline: December 1, 2024

Enrollment deposit deadline: April 1, 2025

### Transfer Student Deadlines

Application deadline: February 1, 2025

Enrollment deposit deadline: May 1, 2025

This credit will be available for enrolled students and can be applied toward books at the St. John’s University Campus Store.

## UNDERGRADUATE TEST OPTIONAL POLICY

St. John’s University is test optional for international students, even for merit aid consideration. We do not require the SAT or ACT for admission (unless required by a specific program).

## ENGLISH LANGUAGE PROFICIENCY

English language proficiency test scores are not required for the following:

- Students who have completed their full secondary studies in any of the following countries: American Samoa; Antigua and Barbuda; Australia; Bahamas; Barbados; Belize; Bermuda; Botswana; British Virgin Islands; Canada (except Quebec); Dominica; Eswatini; Gambia; Ghana; Grenada; Grand Cayman; Guyana; Ireland; Jamaica; Kenya; Lesotho; Liberia; Malawi; Mauritius; New Zealand; Nigeria; Papua New Guinea; Sierra Leone; Singapore; South Africa; St. Kitts and Nevis (St. Christopher); St. Lucia; St. Vincent and the Grenadines; Trinidad and Tobago; Turks and Caicos Isle; Uganda; United Kingdom; US Pacific Trust; Zambia; and Zimbabwe
- Students who choose to take part in our conditional admission program (see conditional admission).

## CONDITIONAL ADMISSION

The English Language Institute (ELI) is the University’s full-time, intensive English language program. International students applying to our undergraduate or graduate programs who do not meet English language proficiency requirements for direct admission may be conditionally admitted and required to enroll in the ELI. Students who have been conditionally admitted to the University and successfully complete the appropriate level of the ELI may begin their degree programs without taking additional language proficiency exams.

## ENGLISH AS A SECOND LANGUAGE

The English as a Second Language (ESL) program at St. John’s University, housed in the Department of Languages and Literatures, provides non-native English speakers with the language skills necessary to succeed in both academic and professional settings. The comprehensive program includes language evaluation, advisement, instruction, and cultural orientation. Undergraduate students in the ESL program receive credit toward their degrees and fulfill their language requirements, while graduate students receive three credits toward full-time visa status.



## UNDERGRADUATE INTERNATIONAL TRANSFER APPLICANTS

Students who have attended an international university not accredited by the United States or whose academic records are in a language other than English must submit a foreign credential evaluation. Please refer to [naces.org](http://naces.org) for a listing of credential evaluating agencies from which we can accept course-by-course evaluations. The evaluations must contain US grade and credit equivalents. For more information and individual program requirements, refer to the St. John’s *Undergraduate Bulletin* at [www.stjohns.edu/bulletins](http://www.stjohns.edu/bulletins).

## UNDERGRADUATE PROGRAM DEADLINES

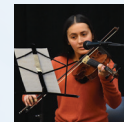
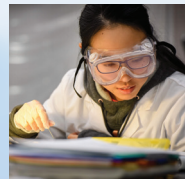
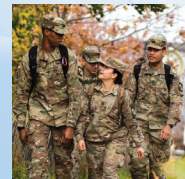
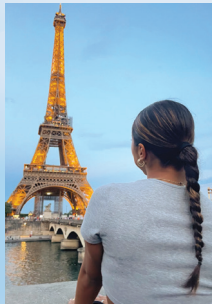
These suggested deadlines are general and may not apply to certain programs:

- fall semester for international students interested in on-campus housing: February 15
- fall semester for international students not interested in on-campus housing: May 1
- spring semester for international students: November 1.

Programs offer admission on a rolling basis; for additional information and exceptions, visit [www.stjohns.edu/deadlines](http://www.stjohns.edu/deadlines).



MORE THAN  
**180**  
STUDENT CLUBS AND  
ORGANIZATIONS ON CAMPUS



# Undergraduate Application Checklist

## APPLICATION

- Complete and submit your free application at [www.stjohns.edu/apply](http://www.stjohns.edu/apply) or [www.commonapp.org](http://www.commonapp.org).
- An essay and recommendation letters are encouraged for all programs, but required only for Pharmacy.
- Certain programs may have additional requirements. Visit [www.stjohns.edu/majors](http://www.stjohns.edu/majors) and select your major to see if more application materials are required.

## ACADEMIC DOCUMENTS

- Official secondary school results in original language with official English translation are required.
- Official examination results, sent directly from the examining board (if official examination is taken).
- A statement of activity is required if you have a gap in your education of more than three months between your graduation date and date of application submission.

## TOEFL, IELTS, DUOLINGO, or PTE-ACADEMIC TEST SCORES

- A TOEFL, IELTS, Duolingo, or PTE-Academic test score is required to demonstrate English language proficiency for applicants from a non-English-speaking country.
- When a score from one of the tests listed above is provided, the SAT/ACT is optional, unless your program of choice makes this a requirement. For more information and individual program requirements, refer to the St. John's *Undergraduate Bulletin* at [www.stjohns.edu/bulletins](http://www.stjohns.edu/bulletins).

## SAT or ACT SCORES

- Not required for applicants from English-speaking countries. To see if your country is included as an English speaking country, please visit [www.stjohns.edu/international/ug/requirements](http://www.stjohns.edu/international/ug/requirements).
- Please use St. John's school code 2799 for SAT and 2888 for ACT.
- Students who have completed their entire high school education (four years) in the United States can request that the SAT/ACT be waived.





# Graduate Majors and Programs of Study

[www.stjohns.edu/majors](http://www.stjohns.edu/majors)

## College of Pharmacy and Health Sciences

### DOCTOR OF PHILOSOPHY

Pharmaceutical Sciences  
Industrial Pharmacy  
Medicinal Chemistry  
Pharmacology  
Toxicology

### MASTER OF SCIENCE

Pharmaceutical Sciences  
Industrial Pharmacy  
Medicinal Chemistry  
Pharmacology  
Pharmacy Administration  
Pharmaceutical Marketing  
Physician Assistant  
Toxicology

### MASTER OF PUBLIC HEALTH

COLLABORATIVE MASTER OF SCIENCE  
Biological and Pharmaceutical  
Biotechnology  
Available through the University's  
Institute for Biotechnology, this is a  
collaborative program with

the College of Pharmacy and  
Health Sciences and St. John's  
College of Liberal Arts and Sciences

## The Lesley H. and William L. Collins College of Professional Studies

### DOCTORAL

Homeland Security (D.P.S.)  
Multi-Sector Communication (Ph.D.)

### MASTER OF PROFESSIONAL STUDIES

Homeland Security and Criminal Justice  
Leadership  
Sport Management

### MASTER OF SCIENCE

Computer Science  
Cyber and Information Security  
Data Science  
Health Care Systems  
Healthcare Informatics  
Integrated Advertising Communications  
International Communication  
International Hospitality Management

## The Peter J. Tobin College of Business

### MASTER OF BUSINESS ADMINISTRATION (M.B.A.)

Artificial Intelligence  
Business Analytics  
Educational Leadership  
Enterprise Risk Management  
Entrepreneurship  
Finance

Financial Technology  
Healthcare Systems  
Information Systems  
Interdisciplinary Business  
International Business  
Marketing Analytics  
Marketing Management

Risk and Financial Advisory  
Risk Management  
Strategic Management  
Sustainability  
Taxation

### M.B.A. IN ACCOUNTING

### STEM M.B.A.

MASTER OF SCIENCE  
Accounting  
Actuarial Science

Business Analytics  
Enterprise Risk Management  
Finance  
Global Management and Leadership  
Marketing Intelligence  
Risk and Financial Advisory  
Risk Management and Risk Analytics  
Taxation

### ADVANCED CERTIFICATE

Business Administration  
Business Analytics  
Enterprise Risk Management  
Finance  
Internal and Information Technology Audit  
Management  
Marketing Intelligence  
Risk Management

## The School of Education

DOCTOR OF PHILOSOPHY  
Curriculum and Instruction  
Literacy

DOCTOR OF EDUCATION  
Administration and Supervision  
Instructional Leadership

MASTER OF SCIENCE IN EDUCATION

Clinical Mental Health Counseling  
Early Childhood Education B-2 and  
Teaching Children with Disabilities B-2  
Field Change  
School Building Leader  
School Counselor  
School Counseling with Bilingual Extension  
Teaching Children with Disabilities in  
Childhood Education 1-6

Teaching English to Speakers of Other  
Languages (TESOL) PK-12  
Teaching Literacy B-6 and Teaching  
Children with Disabilities in Childhood  
Education  
Teaching Reading and Literacy, PK-12  
Teaching Students with Disabilities 7-12  
Generalist with Subject Extensions  
Teaching Literacy B-6 and Teaching  
English to Speakers of Other  
Languages (TESOL) PK-12

Teaching Literacy 5-12 and Teaching  
English to Speakers of Other  
Languages (TESOL) PK-12  
Teaching Literacy 5-12 and Teaching  
Students with Disabilities 7-12  
Generalist with Subject Extensions

## CAREER CHANGE: MASTER OF SCIENCE IN EDUCATION

Adolescent Education and Teaching  
Students with Disabilities 7-12  
Adolescent Education Biology 7-12  
Adolescent Education English 7-12  
Adolescent Education Social Studies 7-12  
Adolescent Education Spanish 7-12  
Childhood and Childhood Special  
Education 1-6  
Childhood Education 1-6 and Teaching  
English to Speakers of Other  
Languages (TESOL) PK-12  
Early Childhood Education B-2  
Early Childhood Education B-2  
Career Change  
Early Childhood Education B-2 and  
Teaching Students with Disabilities B-2  
Generalist with Subject Extensions,  
Childhood Education 1-6  
School Building Leadership  
Teaching Children with Disabilities B-2  
Career Change

ADVANCED CERTIFICATE  
Clinical Mental Health Counseling  
Instructional Leadership  
Middle School Education 5-6

Middle School Education 7-9  
School Building Leader  
School Building Leader/School  
District Leader  
School District Leader  
Teaching Children with Disabilities in  
Childhood Education  
Teaching Students with Disabilities 7-12  
General Subject Area  
Teaching English to Speakers of Other  
Languages (TESOL) PK-12  
Teaching Reading and Literacy, PK-12

## St. John's College of Liberal Arts and Sciences

### DOCTORAL

Audiology (Au.D.)  
A consortium program between  
St. John's University, Adelphi  
University, and Hofstra University  
Biology (Ph.D.)  
Clinical Psychology (Ph.D.)  
Childhood  
General  
English (Ph.D.)  
School Psychology (Psy.D.)  
Bilingual  
General

World History (Ph.D.)

### MASTER OF ARTS

Applied Mathematics, Computing, and  
Machine Learning  
Chinese Studies  
Criminology and Justice  
East Asian Studies  
English  
Environmental Sustainability and  
Decision Making  
Environmental Policy  
Environmental Science  
Global Development and Social Justice  
Science  
Social Science  
Government and Politics  
American Government  
Comparative Politics  
International Relations  
Political Theory  
Public Policy and Administration

### History

European History  
Gender History  
World History  
US History

### Liberal Studies

Humanities  
Interdisciplinary Studies  
Social Science  
Women and Gender  
Museum Administration  
Philosophy, Politics, and Economics  
Psychology  
Cognitive Behavioral Processes  
Social, Developmental Processes  
Public History  
Sociology  
Spanish  
Speech-Language Pathology  
Bilingual  
Theology  
Biblical Studies  
Historical and Theological Studies  
Pastoral Theology

### MASTER OF SCIENCE

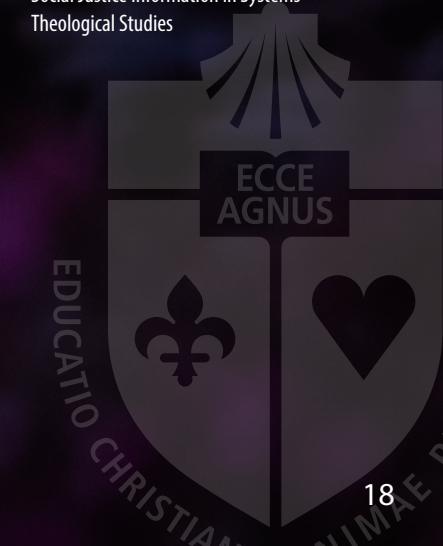
Biology  
Chemistry  
Computational Biology and Biostatistics  
Library and Information Science  
Academic Librarianship  
Archives and Records Management  
Public Librarianship

Youth Services

Neuroscience  
School Psychology  
Bilingual  
General

### ADVANCED CERTIFICATE

International Law and Diplomacy  
Latin American and Caribbean Studies  
Management for Information Professionals  
Public Administration  
Social Justice Information in Systems  
Theological Studies





# Graduate Application Checklist

## APPLICATION

- Submit the online application and nonrefundable application fee at [grad.stjohns.edu/apply](http://grad.stjohns.edu/apply).
- A personal statement, résumé and recommendation letters are required for most programs.

## TRANSCRIPTS

- Official university and postsecondary transcripts, as well as degree conferrals/diplomas are required.
- A NACES course-by-course credential evaluation with GPA calculation of foreign university transcripts is required.

## TEST SCORES

- TOEFL, IELTS, PTE-Academic, or Duolingo exam to demonstrate English language proficiency is required.
- Some programs require GRE scores

## GRADUATE MERIT SCHOLARSHIPS

A number of merit-based scholarships are available to first-year graduate students who enroll in specified St. John's master's degree programs. Students accepted to St. John's are automatically considered for merit-based scholarships. They are notified about these scholarships at the time of, or shortly after, acceptance. More information on all the graduate scholarships can be found at [www.stjohns.edu/graduatescholarships](http://www.stjohns.edu/graduatescholarships).

*To see conditional admission requirements, reference page 14.*

For more deadlines and requirements for specific programs, visit [www.stjohns.edu/graduate-deadlines](http://www.stjohns.edu/graduate-deadlines). For information about School of Law programs, visit [www.stjohns.edu/law](http://www.stjohns.edu/law).

*Certain programs may have additional requirements and application fees. Visit [www.stjohns.edu/gradchecklist](http://www.stjohns.edu/gradchecklist) to see if more application materials are required.*





# Just the Facts

**17  
NCAA  
DIVISION I  
TEAMS**

CONFERENCE: BIG EAST  
TEAM NAME: RED STORM  
MASCOT: JOHNNY THUNDERBIRD

**31**

STUDENT FULBRIGHT  
WINNERS SINCE 2012

**60%**

NON-CATHOLIC

**40%**

ROMAN CATHOLIC

**49%**

ARE BLACK, LATINX, ASIAN,  
NATIVE HAWAIIAN/PACIFIC  
ISLANDER, AMERICAN  
INDIGENOUS, ALASKA NATIVE,  
OR TWO OR MORE RACES.

**119**

COUNTRIES

**57%**

FEMALE

**43%**

MALE

## POINTS OF PRIDE

"Best Online M.B.A. Programs": #4  
(*Fortune*, 2023)

"Best Online Master's in Criminal  
Justice Programs": #30 tie  
(*U.S. News and World Report*, 2024)

"Best Master's in Online Library  
Science Online Programs": Top 10  
(*Forbes Advisor*, 2024)





## ST. JOHN'S UNIVERSITY

8000 UTOPIA PARKWAY  
QUEENS, NY 11439  
[WWW.STJOHNS.EDU](http://WWW.STJOHNS.EDU)

OFFICE OF GRADUATE ADMISSION  
TEL: +1-718-990-1601  
[GRADHELP@STJOHNS.EDU](mailto:GRADHELP@STJOHNS.EDU)

OFFICE OF INTERNATIONAL  
UNDERGRADUATE ADMISSION  
TEL: +1-718-990-2000  
[INTLADM@STJOHNS.EDU](mailto:INTLADM@STJOHNS.EDU)

### NONDISCRIMINATION STATEMENT

St. John's University does not discriminate on the basis of race; color; national origin; sex; actual or potential parental, family, or marital status; pregnancy and related conditions; disability; age; or any other characteristic protected by law in its programs and activities. The following person has been designated to handle inquiries regarding the nondiscrimination policies: Danielle Haynes, Director of Equal Opportunity and Compliance and Title IX Coordinator, Office of Human Resources, 8000 Utopia Parkway, Queens, NY 11439, 718-990-1865, press 4; [haynesd1@stjohns.edu](mailto:haynesd1@stjohns.edu).

### ANNUAL SECURITY AND FIRE SAFETY REPORT

The University's *Annual Security and Fire Safety Report*, which contains three years of campus crime and fire safety statistics and campus security policy and procedures, is available online at [www.stjohns.edu/safetyreport](http://www.stjohns.edu/safetyreport). Upon request, prospective students may obtain a paper copy by contacting the Department of Public Safety at 718-990-1435.

Visit [www.stjohns.edu/Consumer](http://www.stjohns.edu/Consumer) to access key consumer disclosures required under the Higher Education Opportunity Act.

Visit [www.stjohns.edu/Compliance](http://www.stjohns.edu/Compliance) for the University's information on compliance policies.



REQUEST INFORMATION