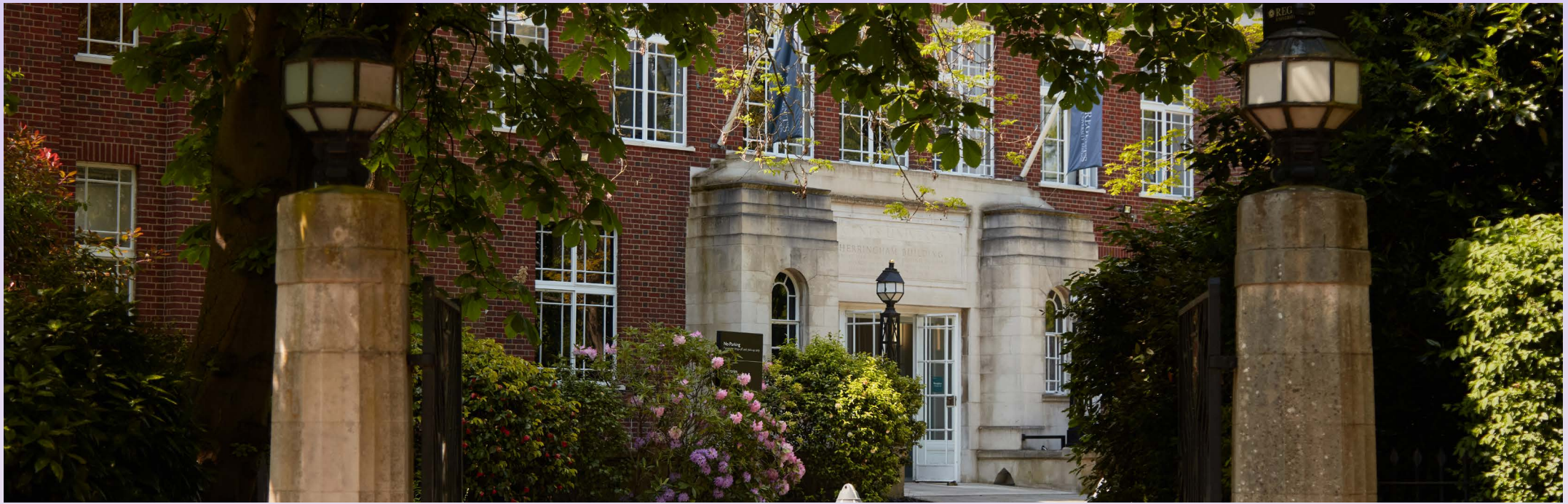


# Study Abroad & Exchange







# Applications and deadlines

Studying abroad can be hugely beneficial in increasing students' interpersonal and communication skills, not to mention their career prospects – and we have plenty of options available at our central London campus:

Students can visit us for a term or two, or join us for the summer (undergraduate students only).

## Course duration

**Autumn 2025**  
**Spring 2026**  
**Summer 2026**

8 Sept – 05 December  
19th Jan – 1st May 2026  
6 weeks: 26th May – 3rd July

These dates are inclusive of induction week and examination periods.

12 weeks: 26th May – 14th August

#1

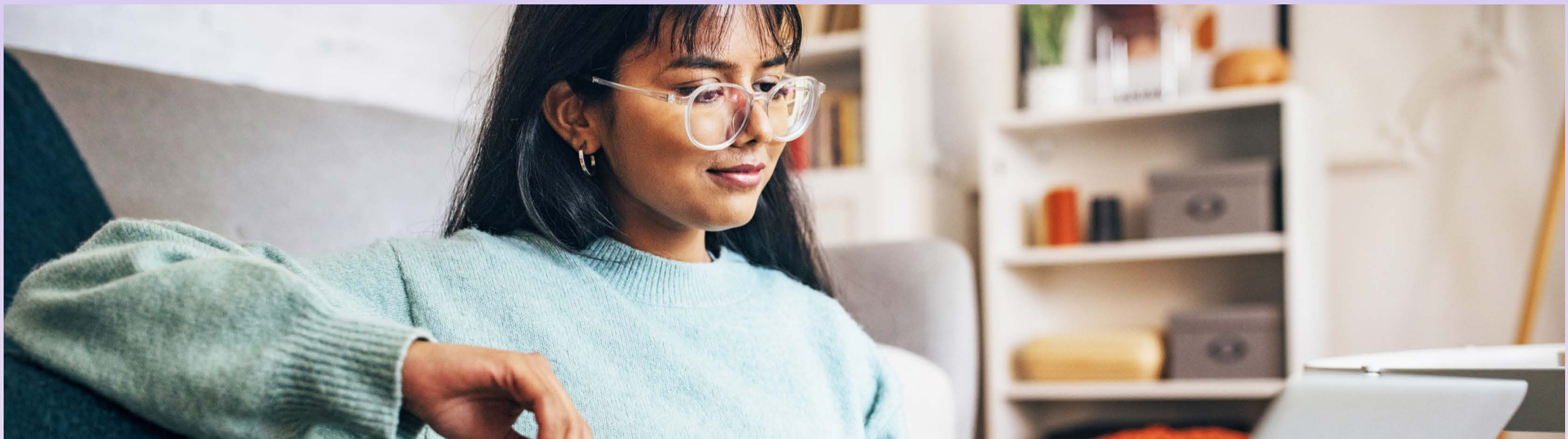
in England for future-ready skills and student voice  
National Student Survey 2024

#3

in London for student satisfaction  
National Student Survey 2022

Silver

in the Teaching  
Excellence Framework 2023



## Nominations

All students (apart from independent free movers) must be nominated by their home university or agent via a Regent's nomination form, which we'll send to partners when nominations open.

Free movers should [enquire directly](#).

## Deadlines

Students are guaranteed a place provided they meet our requirements – and their application, including supporting documents, has been received by the deadlines below:

## Applications

Nominated students will receive an email with an application link and instructions on how to apply online. They must have the following items ready:

- ✓ A clear copy of their passport (photo page only)
- ✓ A copy of their most recent official academic transcripts\*
- ✓ A short personal statement (free movers only)

If they're applying for two terms, they'll also need:

- ✓ A copy of an [approved English language test](#)

\*If documents aren't issued in English, we require the original as well as an official translation.

	Autumn 2025	Spring 2026	Summer 2026
<b>Nominations</b>	11 July	21 November	6 March* / 23 January**
<b>Applications</b>	18 July	29 November	13 March* / 30 January**

\*6 weeks

\*\* 12 weeks incl. internship



# Modules and requirements

## English language requirements

### One term

If students are joining us for one term, no proof of English proficiency is required – however, we do recommend a level equivalent to CEFRL B2 to ensure they're comfortable communicating.

### Two terms or summer programme with internship

If students are joining us for two terms, or the summer programme with internship, they'll need to meet the UKVI requirements for entry into the UK under a Student visa. We accept all government approved English language tests.

This doesn't apply to those who are nationals of a majority English-speaking country as defined by UKVI, or those who have completed an academic qualification (equivalent to a UK degree) from an English-speaking country. Please note, students can only come for two terms under the Student sponsorship route if they're currently enrolled at an ECCTIS approved university, and if the two terms at Regent's contribute to the completion of their home degree.



## Choosing modules

When students submit their online application, they'll be able to choose their modules. Indicative modules are available below:

### Autumn and Spring

They can choose any combination they like (from Business, Fashion, Film, Psychology and more) however, they'll need to have them approved by their home university. Please note, taking modules from different subject areas may result in timetable clashes. We'll inform students if this happens. Because of this, we encourage students to select backups.

Students with limited prior knowledge of subject areas should choose level 3 and level 4 modules only.

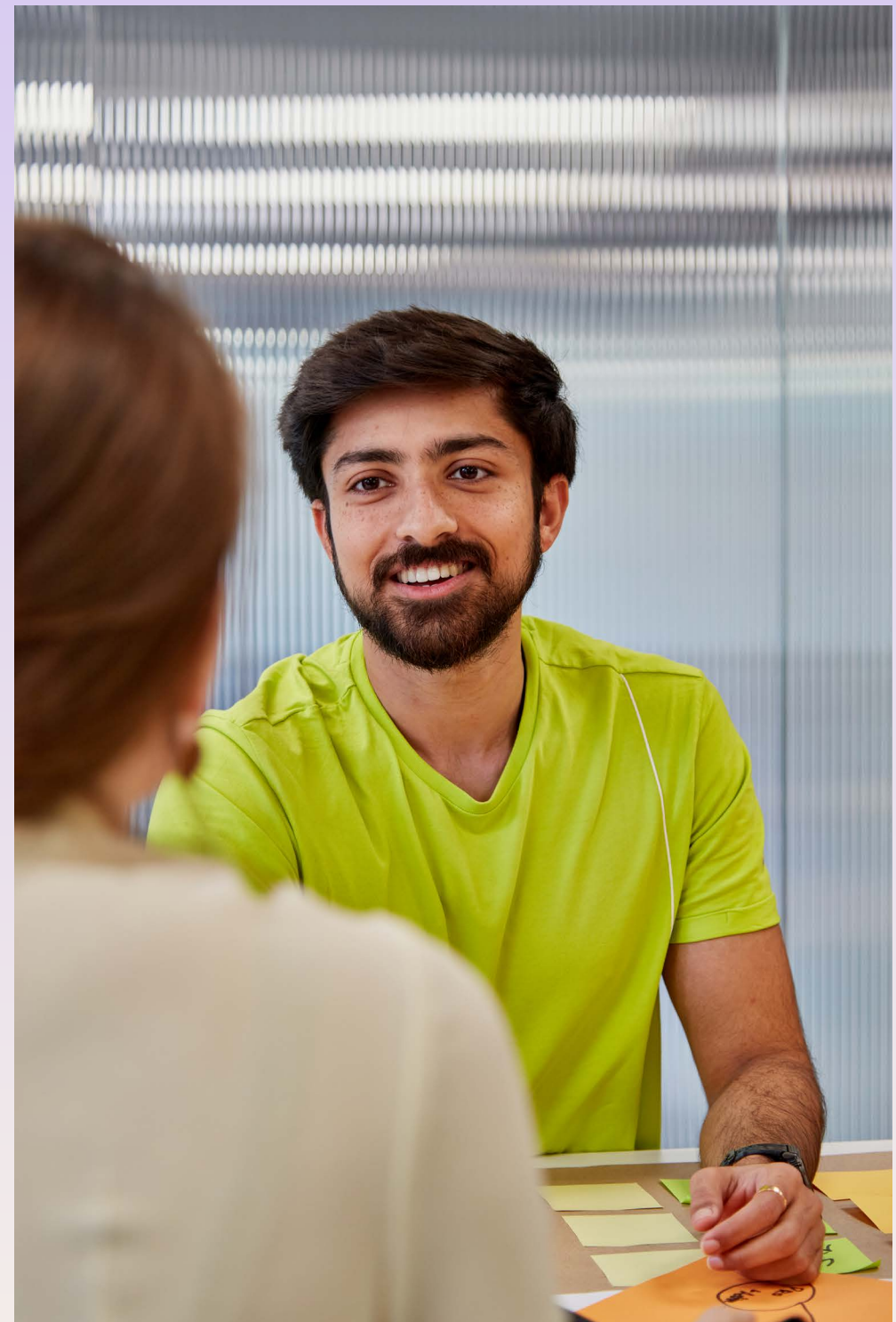
The maximum credit load allowed for Autumn and Spring is 40 ECTS, although for a good study-life balance, we recommend a credit load up of to 30 ECTS. Where possible, we advise students to take no more than 20-25 ECTS to allow them more free time to explore London.

### Summer programme

For the summer programmes, the credit load is as follows:

- 6 weeks: 12 ECTS (two modules)
- 12 weeks: 22 ECTS (two modules + internship)

Please note, it's the home university's responsibility to determine credit equivalency.







# Offer and acceptance

Students will receive an offer letter within four weeks of applying, provided all their documents are received by the deadline above. To accept an offer, they must check that all information is correct, read and accept the terms and conditions and agree to comply with the University's policies.

Students paying Regent's directly must pay a non-refundable deposit upon acceptance, which will be deducted from their full tuition fee. Institutions paying on behalf of students will be responsible for paying the deposit once a student has accepted their offer.

- One term and summer programme: £1,000
- Two terms: £4,000

## Tuition fees

Exchange students don't need to pay.  
For everyone else:

### Undergraduates

- One term: £11,250
- Two terms: £22,500

### Postgraduates

- One term: £13,000
- Two terms: £26,000

### Summer programme

- Per module: £2,300

*Discounts are available for students from within our partner network.*





# Accommodation

Regent's offers brilliant [on-campus accommodation options](#) in Reid Hall. To apply, students can use our [online application form](#) - however, they won't be able to do this until they've submitted a study abroad application and received their ID number, which looks like this: S2300942.

Students receive a £105 meal allowance per week. This is issued on their student ID card and can be used at any of our on-campus food outlets. This doesn't guarantee three meals a day, so it's the students' responsibility to budget and top up if needed. Unspent money can't be carried over or refunded. [accommodation@regents.ac.uk](mailto:accommodation@regents.ac.uk)





# Pre-arrival information

## Immigration

All students must ensure that they have the right to study in the UK. This information is available on the [UK government website](#) and [Regent's website](#). In short:

### One term

- Depending on your nationality, you will either apply for a [Visitor visa](#), an ETA or receive permission to enter at the border.
- Check which applies to you: [www.gov.uk/check-uk-visa](http://www.gov.uk/check-uk-visa)

Nationals, who cannot apply for an ETA yet, will be able to enter the UK without a visa as a Visitor. They will need to keep a copy of their boarding pass or obtain a stamp in their passport at the border to prove their date of entry.

### Two terms or summer programme with internship

- All non-UK and Irish nationals coming to for two terms will need to apply for a [Student visa](#).

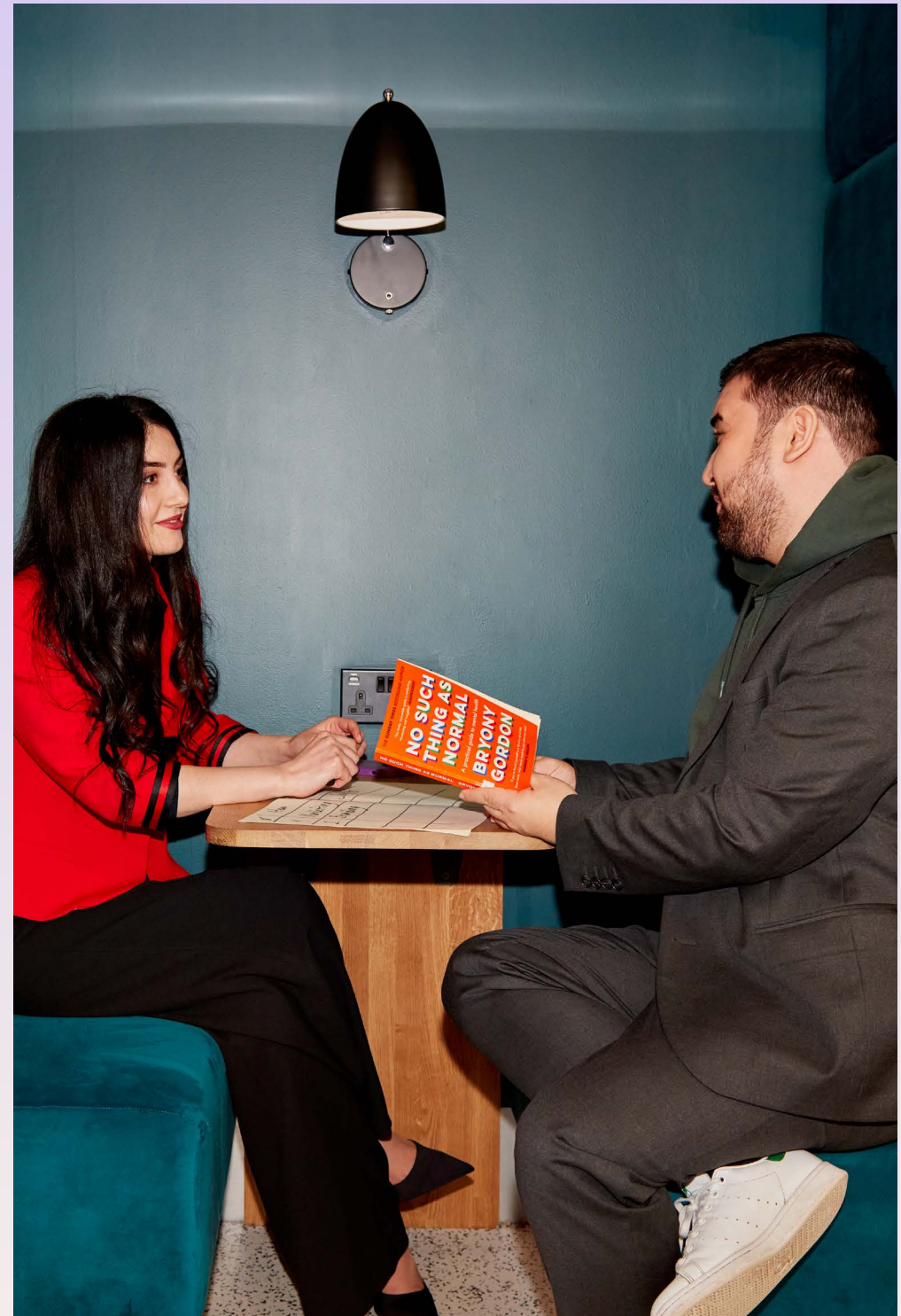
Students will receive instructions prior to their arrival on how to prove their immigration status. For more information, please contact [visas@regents.ac.uk](mailto:visas@regents.ac.uk)

## Health insurance

We do not offer health insurance. It's the student's responsibility to take out their own insurance before they travel.

## English language support

English classes are available before the beginning of each term at [Regent's School of English](#) and via free, non-credit bearing 'English for Academic Purposes' classes throughout the term.







# Post-arrival information

## Enrolment and Welcome Week

Students must complete an online enrolment prior to arrival. They'll receive an email with details approximately four weeks before the start of term. They're also required to arrive one week early to attend a compulsory Welcome Week, meeting classmates and settling into university life. They'll be sent a detailed schedule two weeks before arriving.

## Class timetable

Students can see their provisional timetable around two weeks before classes start. They should review it carefully and ensure all modules have been approved by their home university and can be transferred to their degree. Timetable changes can only be made for academic reasons and must be requested by the home institution.

## Attendance

Classes can be scheduled any time during the core teaching week (Monday to Friday, 09:00-19:00). Attendance is compulsory and is monitored closely with an electronic 'tap-in' system, enabling us to ensure students are engaged and identify those who may need further support.

We take student attendance very seriously – if students attend less than 75% of their classes, this will be flagged in our system and we'll arrange a meeting with them to understand how this can be improved. If attendance doesn't improve, there's a risk of withdrawal. [Learn more.](#)



# Grading systems

## Undergraduates

70%+	First Class Honours
60-69%	Second Class Honours Higher
50-59%	Second Class Honours Lower
40-49%	Third Class Honours
39%-	Fail

## Postgraduates

70%+	Distinction
60-69%	Merit
50-59%	Pass
49%-	Fail







# Graduate information

## Transcripts

Official transcripts can only be issued once grades have been reviewed and approved by relevant exam boards. Digital copies of transcripts are sent directly to the student's home institution:

- In March for Autumn term students
- In July for Spring term students
- In August for Summer students

## Alumni network

After completing their time at Regent's, students will have the option to sign up to our [Associate Alumni network](#) - enabling them to visit campus whenever they like, connect with other graduates, volunteer with current students and apply for special discounts. [alumni@regents.ac.uk](mailto:alumni@regents.ac.uk).

## Contact us

For more information, get in touch:  
[regents.ac.uk/study/study-abroad/inbound](https://regents.ac.uk/study/study-abroad/inbound)  
[studyabroad@regents.ac.uk](mailto:studyabroad@regents.ac.uk)  
+44 (0)20 7487 7508



‘Regent’s offers  
the perfect university  
experience, with incredible  
opportunities to  
explore and grow.  
Its location is unmatched,  
yet its campus feels  
intimate and familiar.’



Jenny Ray, alumna.



