

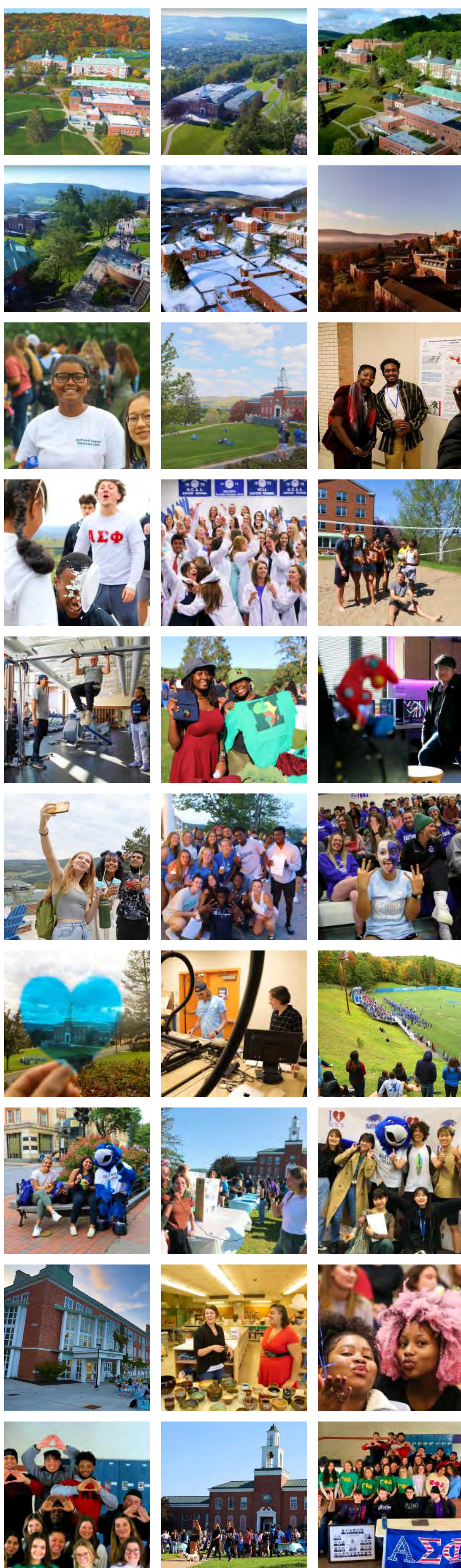
**CONTENTS:**

- [Explore The Life Balance College](#)
- [Your New Neighborhood](#)
- [Your Academics](#)
- [Your Learning Spaces](#)
- [Your Tuition & Costs](#)
- [Your Flightpath to Success](#)
- [Your Student Life](#)
- [Your Campus](#)
- [Your Home From Home](#)
- [Your Resources & Support](#)
- [Request More Information](#)

# EXPLORE THE LIFE BALANCE COLLEGE

## Photo Gallery

Click on a tile to enlarge the image



*Hartwick's community is so welcoming and friendly. I love how people on campus make an effort to relate with each other. The faculty and staff are always willing to help out.*

**RUNYARARO CHAORA '25**  
International Student from Zimbabwe



*It's always hard to leave your hometown and go to a new country, but I've found a home away from home at Hartwick College*

**NURIA SANTOS '25**  
International Student from Spain



# YOUR NEW NEIGHBORHOOD



Explore our gorgeous  
region and the many fun  
things to do

Hartwick College offers a unique balance: a peaceful, scenic campus in Oneonta, New York, with quick access to city life. Here, students find room to thrive, enjoying historic architecture, state-of-the-art facilities and stunning views of the Susquehanna Valley. Our campus and the vibrant town of Oneonta provide enriching experiences—from diverse restaurants and local shops to year-round outdoor adventures like hiking, kayaking and skiing. And when you're ready for city excitement, Albany, Boston, and New York are just a drive away.

## EXPLORE OUR FAVORITE SPOTS IN ONEONTA



**BEST PLACE TO EAT:**  
Autumn Café



**BEST COFFEE SHOP:**  
Latte Lounge



**BEST LATE-NITE HANGOUT:**  
Tino's Pizza



**MOST FUN TO DO :**  
Interskate 88



**OUTDOOR ADVENTURE:**  
Pine Lake Environmental Campus



**HIKING TRAILS:**  
Table Rock Trails

## SMALL TOWN VIBE, BIG CITY OPPORTUNITIES

### Big Cities Nearby:



Albany  
1 hr 18 mins



New York City  
3 hrs 47 min



Boston  
4 hrs



**CONTENTS:**

[Explore The Life Balance College](#)

[Your New Neighborhood](#)

| [Your Academics](#)

[Your Learning Spaces](#)

[Your Tuition & Costs](#)

[Your Flightpath to Success](#)

[Your Student Life](#)

[Your Campus](#)

[Your Home From Home](#)

[Your Resources & Support](#)

[Request More Information](#)

# YOUR ACADEMICS

Through Hartwick's balanced approach to education – supported by the **Hartwick FlightPath** – students can choose from a wide range of academic programs that are designed to prepare them for success in today's global and rapidly changing world.

Some of Hartwick's most exciting majors include computer science, business, data analytics, game development, cybersecurity and digital marketing. Or combine two areas of study with a double major (like computer science and music, or business and political science). Our majors are in high demand among employers and Hartwick graduates go on to successful careers in a variety of industries around the world.

Hartwick's academic programs are characterized by their small class sizes, personalized attention and hands-on learning experiences. We even offer many of our programs as three-year majors. Students have the opportunity to work closely with their professors on research projects and internships. Hartwick also offers a variety of faculty-led global experiences and extracurricular activities that help students expand their horizons and develop skills that prepare them for their careers after graduation.



[Find Your Program Here](#)

## HARTWICK OFFERS:



### A THREE-YEAR DEGREE PROGRAM

Complete your college experience a year early



### STUDENT-FACULTY RESEARCH OPPORTUNITIES



### AN HONORS PROGRAM



### ACADEMIC SUPPORT



### FLEXIBLE PROGRAMS



### COURSES OF STUDY:

See our majors and minors at:  
<https://www.hartwick.edu/academics/majors-and-minors/>

### POPULAR PROGRAMS

- Computer Science
- Cybersecurity
- Game Development
- Business Administration
- Nursing
- Biology
- Chemistry
- Biochemistry
- Political Science



**CONTENTS:**

[Explore The Life Balance College](#)

[Your New Neighborhood](#)

[Your Academics](#)

| [Your Learning Spaces](#)

[Your Tuition & Costs](#)

[Your Flightpath to Success](#)

[Your Student Life](#)

[Your Campus](#)

[Your Home From Home](#)

[Your Resources & Support](#)

[Request More Information](#)

# YOUR LEARNING SPACES

Hartwick College is known for its small class sizes and personalized learning environment. The College's classroom and learning spaces are designed to foster interaction and engagement between students and faculty.

Hartwick's campus features a variety of classrooms, outdoor research spaces, art and performance venues, lecture halls and seminar rooms that are equipped with the latest technology. There are also a number of study spaces, including in and around the Stevens-German Library, as well as in the Learning Lab and the Writing Center. In addition, Hartwick has a number of outdoor spaces that are perfect for studying or relaxing.

**HARTWICK LEARNING SPACES ARE DESIGNED TO BE BOTH FUNCTIONAL AND AESTHETICALLY PLEASING,** providing students with the resources they need to succeed in their studies and prepare them for what's next.

## You'll get to take advantage of:



**THE CLARK NURSING SIMULATION LAB:**  
equipped with programmed mannequins and high-tech equipment in a hospital setting.



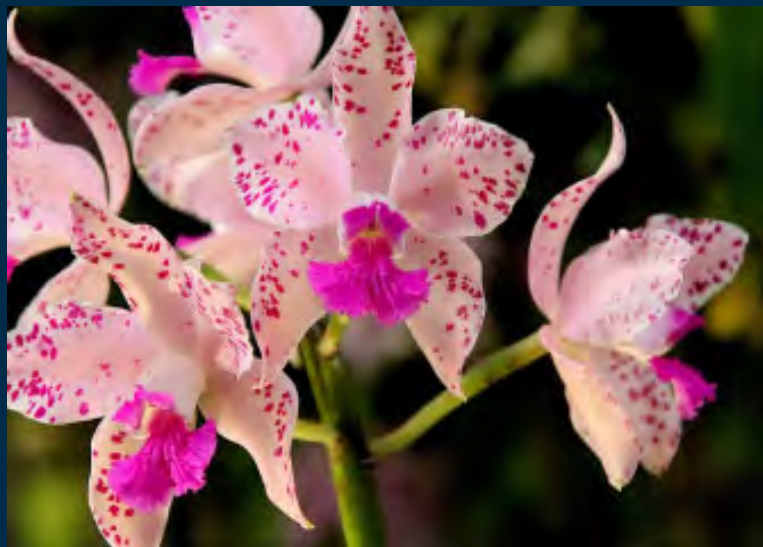
**THE ANDERSON CENTER FOR THE ARTS:**  
includes the Foreman Gallery exhibition space; the Anderson Theatre performance space; music studios and rehearsal spaces; fine art and sculpture studios; a glass-blowing studio and the Fabrication Lab (FabLab), complete with a laser cutter/engraver, a 3D carving machine, vinyl cutter and a 3D Printer.



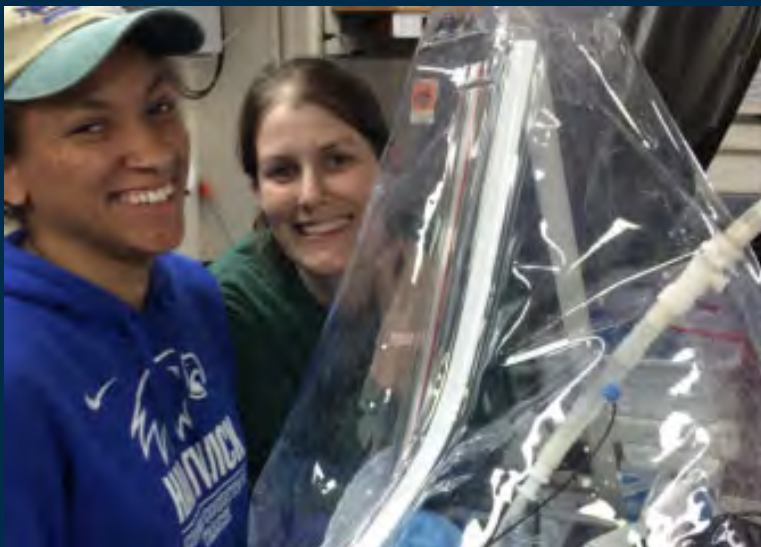
**THE ERNEST B. WRIGHT OBSERVATORY:**  
the 4-meter (13 foot) diameter domed building houses a 40 cm (16 inch) Maksutov convertible Cassegrain/Newtonian telescope and several 20 cm Cassegrain telescopes.



**THE YAGER MUSEUM OF ART AND CULTURE:**  
featuring permanent and changing exhibits, and even the occasional concert!



**THE MILLER GREENHOUSE:**  
offers opportunities to learn how to nurture and protect out-of-season or exotic plants and vegetation



**THE ROBERT R. SMITH FIELD LABORATORY:**  
offers a classroom and lab space at our Pine Lake Environmental Campus and is equipped with computers, microscopes, analytical equipment, and storage space for field equipment.



**THE MAKERSPACE:**  
an open format collaborative workspace to brainstorm, create, learn and develop ideas.



**THE STEVENS-GERMAN LIBRARY:**  
offers extensive resources, collaborative study spaces and research support, fostering a dynamic environment for learning and discovery.



## CONTENTS:

[Explore The Life Balance College](#)

[Your New Neighborhood](#)

[Your Academics](#)

[Your Learning Spaces](#)

| [\*\*Your Tuition & Costs\*\*](#)

[Your Flightpath to Success](#)

[Your Student Life](#)

[Your Campus](#)

[Your Home From Home](#)

[Your Resources & Support](#)

[Request More Information](#)

# YOUR TUITION AND COSTS

**AVERAGE COST FOR  
TUITION AND STANDARD  
FEES IS \$12,000 US  
DOLLARS PER YEAR.**



At Hartwick College, you'll receive a high-quality education at a fraction of the cost of other U.S. private colleges.

Our tuition and standard fees are \$22,000 per year, room and board is \$16,000 per year, and we still offer up to \$10,000 in merit scholarships. There's no catch, just clear and direct pricing.

At Hartwick, we keep the financial aid process simple and straightforward. Financial aid counselors provide personalized financial aid guidance to help students and their families make the most of their financial aid options.



## CONTENTS:

- [Explore The Life Balance College](#)
- [Your New Neighborhood](#)
- [Your Academics](#)
- [Your Learning Spaces](#)
- [Your Tuition & Costs](#)
- [Your Flightpath to Success](#)**
- [Your Student Life](#)
- [Your Campus](#)
- [Your Home From Home](#)
- [Your Resources & Support](#)
- [Request More Information](#)

# YOUR FLIGHTPATH TO SUCCESS-

## OPPORTUNITIES THAT LEAD TO CPT AND OPT

Hartwick is clear in our desire to help you land a curricular practical training (CPT) and optional practical training (OPT) opportunity and we know future employers seek graduates with real-world work experience and the ability to adapt easily. At Hartwick College, our balanced approach to education, supported by the unique FlightPath, equips students for fulfilling careers and balanced lives, including rewarding CPT and OPT opportunities.



Through close collaboration with Guidance Teams—including a personal Career Coach—students define their strengths, build professional networks and access extensive career and internship experiences. This personalized framework prioritizes each student's academic, physical, professional, and financial well-being, ensuring that Hartwick graduates are fully prepared for success.

# YOUR FLIGHTPATH

Discover your strengths, learn essential skills and prepare for your career with FlightPath—your road map to a well-balanced education.

### YEAR 1

#### Get Started Here

- Define your strengths and abilities
- Get a head start on setting your FlightPath goals
- Learn critical twenty-first century skills
- Elevate your health and well-being
- Create a guidance team network

### YEAR 2

#### Plan for What's Next

- Launch your future with the career accelerator
- Network and explore careers at Success Summit
- Chart your academic course
- Check in with your Success Coach during Junior Preview
- Get guidance and support from alumni mentors and career coaches

### YEAR 3

#### Build on What You're Learning

- Match interests with internships, research, clinical or student teaching opportunities
- Gain career-ready work experience
- Try new skills through summer opportunities

### YEAR 4

#### Prepare for the Future

- Reflect and prepare with capstone projects and experiences
- Build a resume that showcases your abilities
- Participate in mock interviews
- Make connections through the robust Network network

## INTERNATIONAL INTERNSHIPS AND INDEPENDENT STUDY

Through a selection of fellowships and scholarships, we offer financial assistance to international students to travel abroad or in the US for an internship or independent study project. Hartwick students have taken advantage of experiences around the globe – from Ghana and Swaziland to Germany and San Francisco.

- Find out about the Cyrus Mehri '83 Fellowship [here](#).
- Find out about the Emerson Scholarship [here](#).
- Find out about the Duffy Scholarship [here](#).
- Find out about the Baker-Simpson Entrepreneurial Leadership program [here](#).
- Find out about the Silicon Valley Experience [here](#).

### Interning the world over.

From Chicago to Brussels and from New York City to Cape Town, Hartwick students secure opportunities around the country and around the globe.

#### Where they intern:





**CONTENTS:**

[Explore The Life Balance College](#)

[Your New Neighborhood](#)

[Your Academics](#)

[Your Learning Spaces](#)

[Your Tuition & Costs](#)

[Your Flightpath to Success](#)

| [Your Student Life](#)

[Your Campus](#)

[Your Home From Home](#)

[Your Resources & Support](#)

[Request More Information](#)



# YOUR STUDENT LIFE

Whether you're hanging out in our Global Education lounge, gaming in one of the social spaces, joining a study group, or grabbing brunch in the Commons, you'll quickly find your people at Hartwick. With our beautiful location and vibrant living spaces, it's easy to feel at home on campus.

Get involved in student government, Greek life, join a club (or two), participate in a musical group, catch a movie. Or how about playing a varsity or intramural sport. As a Hawk, you'll discover that making friends comes naturally, and everyone here is rooting for your success.

## 60+ STUDENT ORGANIZATIONS

### Just some of our clubs:

- African Students Association
- Anthropology Club
- Asian Culture Club
- Biological Honors Society
- Cheerleading Club
- Chemistry Club
- Clay Club
- Computer Science Club
- Fitness Club
- Geology Club
- Habitat for Humanity
- History Club
- International Club
- Latinos Unidos Association
- Model United Nations
- Pine Lake Club
- Psychology Club
- Sociology Club
- Wicked Esports
- WRHO Radio
- Writing Underground



## 21 National Collegiate Athletic Association (NCAA) Teams

### Men's

- Basketball
- Cross Country
- Football
- Indoor Track & Field
- Lacrosse
- Outdoor Track & Field
- Soccer
- Swimming & Diving
- Volleyball

### Women's

- Basketball
- Cross Country
- Field Hockey
- Flag Football
- Indoor Track & Field
- Soccer
- Softball
- Swimming & Diving
- Tennis
- Volleyball





**CONTENTS:**

[Explore The Life Balance College](#)

[Your New Neighborhood](#)

[Your Academics](#)

[Your Learning Spaces](#)

[Your Tuition & Costs](#)

[Your Flightpath to Success](#)

[Your Student Life](#)

| [Your Campus](#)

[Your Home From Home](#)

[Your Resources & Support](#)

[Request More Information](#)

# YOUR CAMPUS

**You'll hear these names a lot: Oyaron Hill. Susquehanna Valley. Table Rock. Pine Lake.**

Translation: Close to 600 acres of rolling hills and beautiful vistas on an unforgettable campus that will inspire and take your breath away. But Hartwick is more than just a gorgeous spot. It's the place where you'll launch the rest of your life.



## TABLE ROCK TRAILS

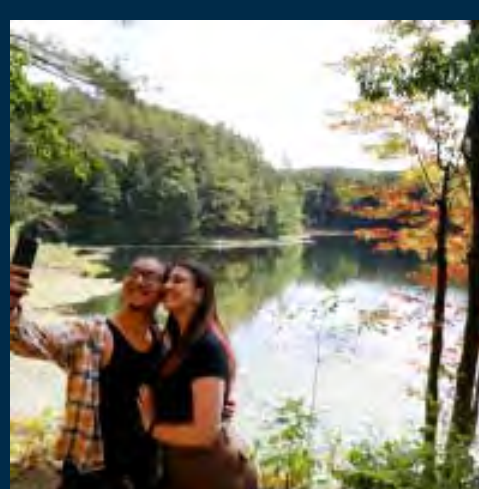
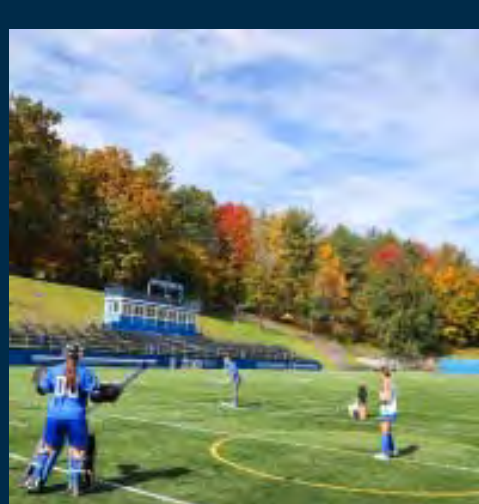
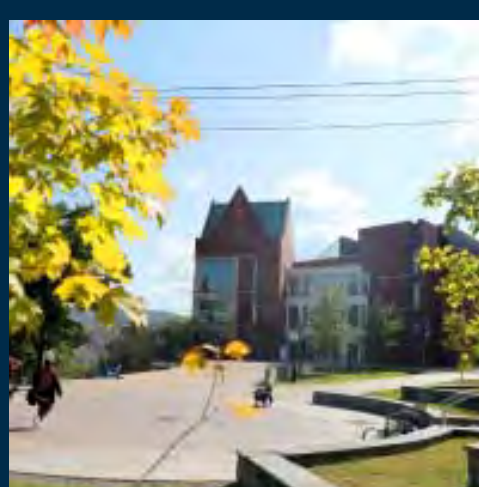
Located on Hartwick's main campus, each loop offers a unique hiking experience where beauty and an epic view of the valley awaits.



## PINE LAKE ENVIRONMENTAL CAMPUS

Located eight miles from campus, Hartwick's Pine Lake is a sustainable living and learning community.

CLICK ON AN IMAGE TO ENLARGE





## CONTENTS:

[Explore The Life Balance College](#)

[Your New Neighborhood](#)

[Your Academics](#)

[Your Learning Spaces](#)

[Your Tuition & Costs](#)

[Your Flightpath to Success](#)

[Your Student Life](#)

[Your Campus](#)

| [Your Home From Home](#)

[Your Resources & Support](#)

[Request More Information](#)



# YOUR HOME FROM HOME

Hartwick is a fully residential campus, meaning nearly all students live on campus for their three or four years, which means you will have easy access to fitness centers, campus activities, tutoring and study hours.

Our dining options offer something for everyone. In the Commons, our main dining hall, brings an all-you-can-eat menu. We also offer daily vegan and vegetarian specials. Have food sensitivities or special needs? Don't worry. We will work with you to accommodate religious observation, including halal and limited kosher diets, as well as food allergies or other dietary restrictions. And there are plenty of on-the-go options for the busy student. Table Rock. John Christopher Café'.

**AT HARTWICK, WE LIVE WHERE WE LEARN!**

## TAKE A VIRTUAL TOUR OF OUR HOUSING SPACES [HERE](#).

Learn important information about the residence hall/area, and utilize the built-in tools to measure anything in the room space.







# YOUR RESOURCES AND SUPPORT

Hartwick College provides a comprehensive support system to help students achieve their academic goals and maintain their well-being. From the Center for Student Success (CSS) to the Perella Health and Wellness Center, we will help you to define your goals and make concrete plans to succeed.

## CONTENTS:

[Explore The Life Balance College](#)

[Your New Neighborhood](#)

[Your Academics](#)

[Your Learning Spaces](#)

[Your Tuition & Costs](#)

[Your Flightpath to Success](#)

[Your Student Life](#)

[Your Campus](#)

[Your Home From Home](#)

| **[Your Resources & Support](#)**

[Request More Information](#)



**THE CENTER FOR GLOBAL EDUCATION** provides best-in-class global engagement that fosters intercultural understanding, ethical and inclusive practices, and an appreciation for diverse perspectives.

You will thrive going abroad, on our Northeast Experience and so much more—all with incredible student services.

We have world-class leadership opportunities like the Cyrus Mehri Fellowship, Peace Corps Prep and Global Ambassadorships. This is just the start of how you will come alive at The Life Balance College.

### CONNECT WITH US FOR ALL YOUR QUESTIONS!

The Center for Global Education  
[globaleducation@hartwick.edu](mailto:globaleducation@hartwick.edu)  
607-431-4414



**THE STUDENT SUCCESS CENTER** has the people and resources you'll need to address any academic challenge. Academic counselors will help you set academic goals and support your progress. A peer tutor may be just the ally you need to move through a difficult class or subject area – they've been there and are ready to help.

Our dedicated **ACCESSABILITY SERVICES** staff will help ensure you get what you need. Note-takers, readers, and private spaces for test-taking are all available to you, in full compliance with the Americans With Disabilities Act.

### THE PERRELLA HEALTH AND WELLNESS

**CENTER** has medical professionals on staff to diagnose and treat or refer you.

- **Wellness:** It's the place to get your flu shot, protect your reproductive health, or take care of some routine tests. If you have a chronic illness such as diabetes or asthma, our Perrella team will work with your primary care doctor to help you maintain the care you need. Best of all, there's no charge for services and minimal charges for testing.
- **Counseling:** Perrella also offers counseling services with trained counselors and a psychiatric nurse. Students can arrange a meeting to discuss a wide range of issues, from stress and conflict to concerns about alcohol or substance abuse. All sessions are confidential and provided free of charge.



## CAMPUS SAFETY

Hartwick College boasts a team of highly trained, state certified Campus Safety Officers that are available to you 24/7. All officers are certified First Responders and many are retired law enforcement officials. Whether it's taking the lead in an emergency, keeping traffic moving safely during big events, or even just giving advice, our officers are always on call to keep our campus safe.