

# Discover Boston.

BOSTON  
UNIVERSITY

**Boston University** Metropolitan College  
International

[bu.edu/METinternational](http://bu.edu/METinternational)





# In a city with more than 50 colleges and universities, what sets Boston University apart?

## Explore one of the world's most dynamic cities

Historic. Cultural. Intellectual. Diverse. Innovative. Boston is a thriving business capital, hub of innovation and research and home to a diverse array of colleges, universities, and cultural institutions. And with more than 400,000 college and university students here, it's a popular study abroad destination.

## Gain a world-class, well-rounded education

Boston University is internationally recognized as a top institution of higher learning and research. Among the largest independent research universities in the US, BU offers more than 300 degree programs across 17 schools and colleges, taught by superb faculty on a campus featuring incomparable resources.

As a student from a BU partner institution, you'll have exclusive access to learn at a top-ranked US university and the opportunity to immerse yourself in a diverse community of students, scholars, and professionals from around the world. MET International's Study in Boston programs put you right in the center of it all.



Student city in the US, 8 years running  
(QS Best Student Cities 2016-24)



2022-2023 Best Global Universities  
(U.S. News & World Report)

# Boston University's Metropolitan College

Competitive. Challenging. Rewarding. These are the foundational principles Metropolitan College (MET)—one of Boston University's 17 degree-granting schools and colleges—applies through innovative programs. Taught by dedicated faculty and industry professionals, you'll learn to be a resourceful, adaptable leader in an interconnected world.

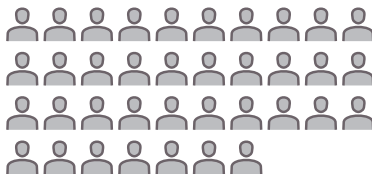
## Accreditations & Designations



The GAC and PMI logos are registered marks of the Project Management Institute, Inc. For the full list of PMI's legal marks, please contact the PMI Legal department.

**57** FULL-TIME TEACHING STAFF POSITIONS

37 PROFESSORS



20 LECTURERS

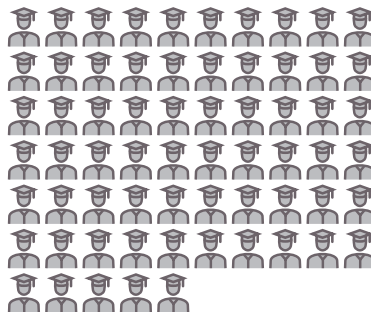


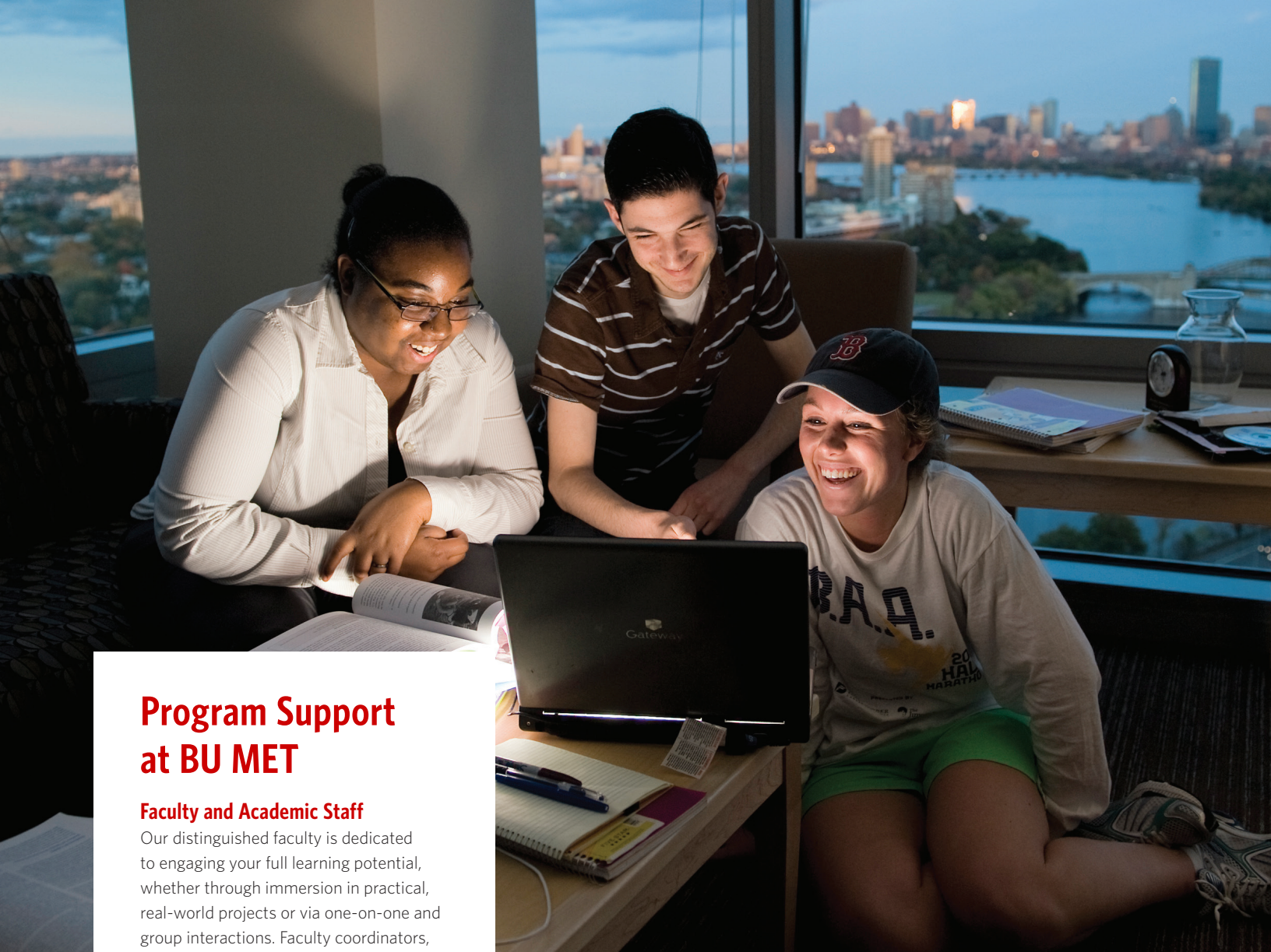
**86** ACADEMIC PROGRAMS

21 UNDERGRADUATE



65 GRADUATE





## Program Support at BU MET

### Faculty and Academic Staff

Our distinguished faculty is dedicated to engaging your full learning potential, whether through immersion in practical, real-world projects or via one-on-one and group interactions. Faculty coordinators, instructors, and department staff actively work to ensure you'll have a superb learning experience at Boston University's Metropolitan College.

### MET International Student Services

Our Student Services team will coordinate with your home institution to provide academic advising, support, orientation, and social programming. We work to ensure you have the resources and information you need to succeed academically and personally at BU.

## Program Dates

### Fall Semester

First week of September  
through third week of December

### Spring Semester

Third week of January  
through second week of May

### Summer Term\*

Third week of May  
through first week of August

\*Advanced graduate certificate and graduate degree opportunities only

## Admission Requirements

### All Programs

- TOEFL: 84 IBT (W22/S23/L18/R21), IELTS: 6.5 (of the four sub-scores, none may be lower than 6.5), or Duolingo: 115.
- Suggested academic grade point average of 3.0 on a US 4.0 scale.
- Must be from an approved BU Metropolitan College institutional partner.

### Undergraduate Semester only

- Have completed one full academic year at your home institution prior to participation in the program.

### Graduate and Advanced Graduate Certificates only<sup>1</sup>

- Have completed a bachelor's degree or equivalent.
- Additional admission requirements apply for arts administration, computer science, administrative sciences and financial management certificates.

### Bachelor's-to-Master's Degrees only<sup>1,2</sup>

- Must be in the final year of your bachelor's degree or equivalent, with the intent to graduate.
- Required to submit final transcripts from pre-approved undergraduate program prior to commencing studies at BU and proof of degree conferral during the first term of graduate study at BU.

### Second Master's Degrees only<sup>1,2,3</sup>

- Currently matriculated in a graduate-level program at an approved BU Metropolitan College partner institution.
- Have completed at least one semester of graduate coursework prior to studying at Boston University.
- Have completed a bachelor's degree or equivalent.

**For more information, please contact the international office at your home institution.**

<sup>1</sup> Alumni from partner institutions may be eligible to apply to select BU Metropolitan College graduate programs. <sup>2</sup> Students from pre-approved programs at partner institutions may be granted advanced standing of up to 8 credits. <sup>3</sup> The BU degree is awarded upon transfer of partner institution credits, completion of partner institution degree, and fulfillment of all BU requirements.



## On-Campus Resources

### Support



Libraries



BU Diversity & Inclusion



Student Health Services



Educational Resource Center



International Students & Scholars Office

### Professional and Social Activities



FitRec



Howard Thurman Center



Office of Student Activities



Center for Career Development

## Beyond BU



### Networking Opportunities

(professional and academic conferences and events)



### Cultural Events

(concerts, performing arts)



### Museums

(60+, many with discounted student admission)



### Sports

(big 4 national teams, plus college games)



### Parks and Recreation

(Boston Common, Arnold Arboretum, Emerald Necklace, beaches, mountains)





# Whatever you're seeking from your study abroad experience, you'll find it with **MET International**.

## Undergraduate Semester

Study full-time and choose three to five undergraduate evening classes at BU's Metropolitan College for one or two semesters.

## Graduate Certificates

Enroll in a specialized certificate program, concentrating in a specific field and consisting of four graduate classes for one semester, while satisfying the international study requirements of your home institution.

## Advanced Graduate Certificates

After completing a graduate certificate in administrative sciences, you may also participate in a four-credit internship the following semester with permission from your home institution.

## Graduate Degree Programs

### Bachelor's-to-Master's

Upon successful completion of a bachelor's degree from a MET International partner institution, you have the opportunity to pursue a BU master's degree program in an abbreviated time frame.

### Second Master's

As a current or recently graduated master's-level student from a MET International partner institution, you may pursue a second master's degree at BU in an abbreviated time frame.

## MET International Study Abroad Program

### Undergraduate Semester Disciplines

Computer Science/Information Technology  
Criminal Justice  
Finance  
History  
Management  
Project Management  
Marketing  
Psychology  
Sociology  
Urban Affairs

### Graduate Certificates

Arts Administration

- Arts Management
- Arts Marketing

Business & Management

- Actuarial Foundations
- Actuarial Science
- Corporate Finance\*
- Financial Management\*
- Global Marketing Management\*
- Innovation & Entrepreneurship\*
- International Business Management\*
- International Finance\*
- Investment Analysis\*
- Project Management\*
- Supply Chain Management\*

Computer Science & IT

- Advanced Information Technology (Business Informatics)
- Data Analytics
- Database Management & Business Intelligence
- Information Security
- Information Technology
- IT Project Management

Criminal Justice

- Crime Analysis
- Criminal Justice
- Cybercrime Investigation & Cybersecurity

Gastronomy

- Food Studies

City Planning & Urban Affairs

- Applied Sustainability
- Urban Policy & Planning

\*Available as Advanced Graduate Certificate

### Bachelor's-to-Master's Degrees

Administrative Sciences

- Actuarial Science
- Administrative Studies, Concentration in Innovation & Technology
- Applied Business Analytics
- Enterprise Risk Management
- Financial Management
- Global Marketing Management
- Project Management
- Supply Chain Management

Arts Administration

Computer Information Systems

- Optional concentrations in Data Analytics; Database Management & Business Intelligence; IT Project Management; and Security

Criminal Justice

- Optional concentrations in Crime Analysis; Cybercrime Investigation & Cybersecurity; and Strategic Management

Gastronomy

Urban Affairs

### Second Master's Degrees

Administrative Sciences

- Actuarial Science
- Administrative Studies, Concentration in Innovation & Technology
- Applied Business Analytics
- Enterprise Risk Management
- Financial Management
- Global Marketing Management
- Project Management
- Supply Chain Management

Arts Administration

City Planning

Computer Science

Computer Information Systems

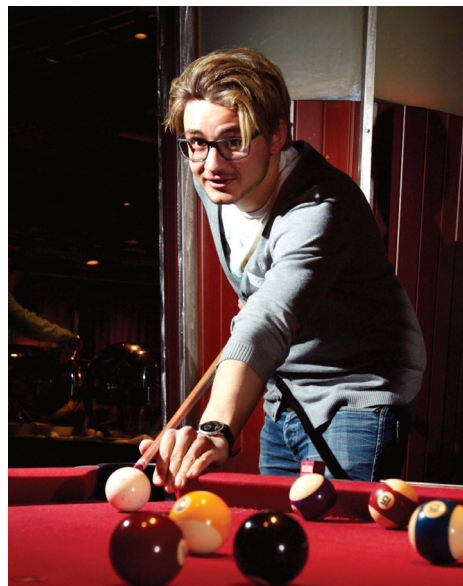
- Optional concentrations in Data Analytics; Database Management & Business Intelligence; IT Project Management; and Security

Criminal Justice

- Optional concentrations in Crime Analysis; Cybercrime Investigation & Cybersecurity; and Strategic Management

Urban Affairs





#### MET International Pricing

For MET International pricing information, please scan the code using the camera on your mobile device.



#### Boston University Housing Resources

To learn about Boston University Housing Resources, please scan the code using the camera on your mobile device.



#### Boston University Metropolitan College International

1010 Commonwealth Avenue, 1<sup>st</sup> Floor  
 Boston, MA 02215 USA  
 Phone: +1-617-353-8429  
 Fax: +1-617-358-4100  
 metintl@bu.edu  
 bu.edu/METinternational

If you would like to learn more about BU MET International programs, please do not hesitate to contact us.

#### Follow us on:



[facebook.com/METBU](https://facebook.com/METBU)  
 (Boston University Metropolitan College)



[@METBU](https://x.com/METBU)  
 (Boston University Metropolitan College)



[youtube.com/BUMET](https://youtube.com/BUMET)  
 (BU Metropolitan College)



[linkedin.com](https://linkedin.com)  
 (Boston University Metropolitan College)



[instagram.com/METBU](https://instagram.com/METBU)  
 (Boston University Metropolitan College)