

# START YOUR **BRISTOL** **STORY**

**INTERNATIONAL GUIDE**  
**2023/24**



# BEAUTIFUL BRILLIANT BRISTOL



## Contact us

University of Bristol  
Beacon House  
Queen's Road  
Bristol BS8 1QU, UK

Tel: +44 (0)117 394 0229  
Email: [international-office@bristol.ac.uk](mailto:international-office@bristol.ac.uk)





## Contents

	Page
Welcome	2
Academic excellence	4
Careers support	6
The city of Bristol	8
A place of possibilities	10
Our Bristol neighbourhood	14
Your student home	16
Our residences	18
Supporting you	20
Societies and sport	22
Fees and costs	24
Scholarships	25
Entry requirements	26
How to apply	27
Courses and programmes	28
Undergraduate courses	30
Postgraduate taught programmes	38
Postgraduate research programmes	40
Our location	41

# 9<sup>TH</sup>

**in the UK**  
QS World University  
Rankings 2023

# 7<sup>TH</sup>

**in the UK for employability**  
QS Graduate Employability  
Rankings 2022

# 5<sup>TH</sup>

**in the UK for research**  
*THE* analysis of REF 2021

# 1<sup>ST</sup>

**greenest city in the UK**  
Good Move, 2020

# 9<sup>TH</sup>

**in Europe for teaching**  
*THE* European Teaching  
Rankings 2019

# 3<sup>RD</sup>

**most cultural and creative  
city in the UK**  
European Commission, 2019



# WELCOME TO BRISTOL

**Founded in 1876, the University of Bristol has a global reputation for high-quality education and research.**

Bristol is one of the UK's most popular universities, with a diverse academic community. Nearly 30,000 undergraduates and postgraduates study here, and around 25% are international.

As a research-intensive university, we aim to answer some of the world's big questions. Join us to work at the forefront of your subject, learn from expert staff, and get involved with our innovative research.

Bristol is committed to protecting the environment, and sustainability is part of everything we do. We were the first UK university to declare a climate emergency and aim to become carbon neutral by 2030.

As a Bristol student, you'll live and study in one of Europe's most vibrant, creative cities. Discover exciting opportunities, friendly people and historic architecture in beautiful, brilliant Bristol.



**Watch our videos to explore some of our amazing Bristol stories.**  
[bristol.ac.uk/study/stories](https://bristol.ac.uk/study/stories)





# 150

**We welcome students from  
more than 150 countries**

# 13

**Nobel Prize winners**



'I chose Bristol because I knew it would provide an excellent academic experience in a comfortable and beautiful city. I love that Bristol remains independent, edgy and unique. It's a city that cares for the environment, for its people, and for living a good life.'

**Juan Pablo, Panama** (BSc Politics and International Relations)

# ACADEMIC EXCELLENCE



‘Bristol is one of the top-ranked universities in the UK – there’s no doubt about it. It has a reputation for world-class education, recognised by employers and academics worldwide.’

**Ishwari, India** (MSc Data Science)

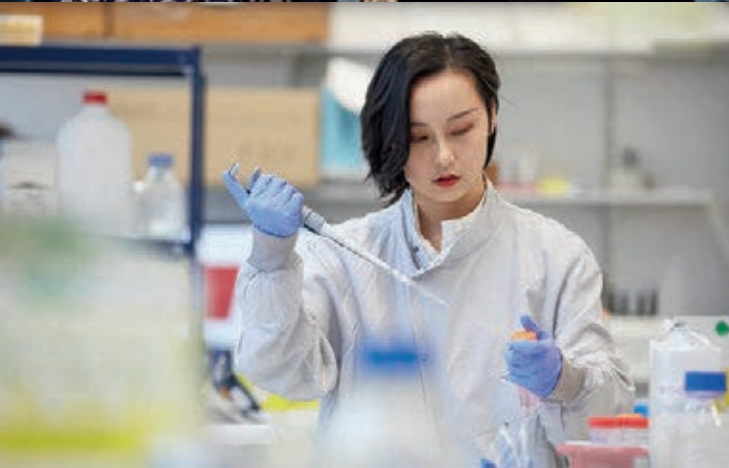
# 61<sup>ST</sup>

**in the world**

QS World University Rankings 2023







**With its outstanding academic environment, Bristol is the place to reach your potential.**

#### **Inspired by research**

As a member of the Russell Group and the Worldwide Universities Network, Bristol is one of the UK's leading research universities. This innovative research informs all our courses, so you'll learn from the latest discoveries.

#### **Choice and flexibility**

We offer more than 600 undergraduate and postgraduate degrees in a wide range of subjects. Many courses allow you to tailor your studies with flexible unit choices. We also run a foundation programme for international students.

#### **Invested in our campus**

Our city University is designed with you in mind. Students can access 24-hour libraries, state-of-the-art laboratories and specialist equipment. Our Security Services and University Police Officer help keep students safe around the campus.

Most buildings are based in our Clifton campus, near the city centre. Here, our Campus Heart programme is transforming our facilities and creating a vibrant hub for all students to connect, study and relax.

See page 28 for a complete list of our degrees.

We are also developing a new world-leading campus focused on digital, business and social innovation. Temple Quarter Enterprise Campus will be a space for students, academics, businesses, partners and the local community to work together.

# 94%

**of our research is rated 'world-leading' or 'internationally excellent'**

*THE* analysis of REF 2021

# CAREERS SUPPORT

**We prioritise your career, with a range of opportunities to help you get the job of your dreams.**

## Excellent reputation

Bristol graduates are highly regarded by employers in the UK and overseas. The University is ranked joint 7th in the UK for employability in the latest QS Graduate Employability Rankings.

Many of our courses are accredited by professional bodies, societies and institutes. This means your degree will be recognised around the globe.

## An international Careers Service

Our Careers Service is here to support you throughout your studies and for up to three years after graduation. We can help whether you plan to stay in the UK or return to your home country after graduating.

Our year-round programme of events includes alumni panels, networking opportunities and workshops. You can learn about your visa options for working in the UK, or how to succeed in your home country job market. We also provide advice and resources for CV writing, applications and interview preparation.

Our online portal advertises job vacancies and paid internships. You can also access Student Circus, a platform to help international students find jobs in the UK and your home country.

Visit **[bristol.ac.uk/careers](https://bristol.ac.uk/careers)** for more information.



# 49<sup>TH</sup>

**in the world for  
employability**  
QS Graduate Employability  
Rankings 2022

## Industry insight

Many courses in business, management, engineering, law and health sciences offer professional mentoring schemes. We have mentors from across the globe, so you can get an insight into the UK or international job market. You could also have the chance to study in industry during your degree.

## Enhance your degree

Alongside your studies, you can work towards the optional Bristol PLUS Award. This programme recognises your development through work experience, volunteering and extracurricular activities. You'll also learn how to communicate your value to employers. The PLUS Award is endorsed by a range of leading recruiters.

## Overseas experience

You can boost your career prospects by studying, working or volunteering abroad during your studies. Many undergraduate degrees allow you to spend a semester or a full year outside the UK. You could also take part in a shorter summer programme.

The Global Opportunities team can help you find an opportunity that meets your goals.

Visit **[bristol.ac.uk/go-abroad](https://bristol.ac.uk/go-abroad)** to explore your options.



# 3<sup>RD</sup>

**most targeted university  
by top UK employers**  
High Fliers Research 2022

### Become a future founder

Bristol actively encourages the innovators and entrepreneurs of the future. We can help you develop your entrepreneurial skills and pursue your start-up goals. The Basecamp Enterprise Team provides guidance, workshops and support to help enhance your networks and build your growth mindset.

### Network with our community

The Bristol alumni network has nearly 170,000 graduates across 191 countries, in every industry sector. Make use of our in-country networks, or join Bristol Connects, our online alumni networking platform.

Visit [bristol.ac.uk/bristol-connects](https://bristol.ac.uk/bristol-connects) for more information.



‘The Careers Service organised career development and networking events. They can also assist with your portfolio or general advice, which was incredibly helpful.’

**Bader, Bahrain** (BSc Economics and Finance)

Careers  
Service

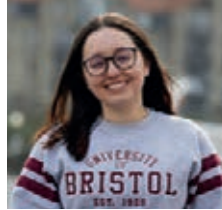
# THE CITY OF BRISTOL



'Bristol is a forward-thinking and quirky city, which attracts some incredible people. The city has so much to offer and you will never run out of new things to do!'

**Avi, Hong Kong** (BSc Biology)





‘One of the most special things about Bristol is that you can walk anywhere. Just watch out for the hills!’

**Ale, Costa Rica** (MSc Education: Neuroscience and Education)





# A PLACE OF POSSIBILITIES



‘Bristol is a colourful city: the buildings can be new or old, pastel-coloured or full of street art. Bristol just brings up your morale and always has a positive vibe.’

**Bianca, Romania** (BSc Neuroscience)



Bristol Comedy Garden



# 400+

parks and green spaces

# 187

countries represented in  
Bristol's community

**The city of Bristol is a creative, inspiring place where everyone is welcome. Located in south-west England, it's the UK's 8th largest city.\***

Bristol has all the vibrant energy of a big city, but its friendly, relaxed atmosphere will help you feel at home. Our University campus is near the centre of Bristol, so you can enjoy everything the city has to offer.

We're proud of our multicultural community. The city is home to people from more than 187 countries, speaking 91 languages, with at least 45 religions.\*\* A huge range of restaurants, shops and markets offer delicious food from around the world. Plenty of vegetarian and halal options are available – and Bristol was named the world's top vegan city in 2020.\*\*\*

Bristol has received the prestigious Purple Flag award for 12 years in a row. This means Bristol city centre is a safe and welcoming place to enjoy a night out.

As a Bristol student, you can enjoy the best of British culture from day to night. Find exciting events, exhibitions and festivals happening every day. Visit eclectic venues to enjoy all kinds of music, theatre and film. Or experience famous architecture and historic sights like the Clifton Suspension Bridge.

It's easy to explore Bristol's different neighbourhoods by walking or cycling. Discover colourful graffiti, hidden spots and beautiful views around every corner. If you want to step out of the busy city, there are more than 400 parks and green spaces all over town.

Bristol is a green city that shares our commitment to protecting the environment. It's a former European Green Capital and the UK's first cycling city, and aims to become carbon neutral by 2030.



Bristol Balloon Fiesta

College Green



‘Bristol is a great mid-size city – you don’t get overwhelmed like you would in London. It’s laid back, and it has lots of green spaces, chic cafes, and diversity.’

**Maya, Malaysia** (MSc Gender and International Relations)

\*Primary Urban Area, [centreforcities.org](http://centreforcities.org) 2017

\*\*Bristol City Council 2020

\*\*\*Chef's Pencil, 2020









# OUR BRISTOL NEIGHBOURHOOD

## 1 Clifton campus

Our main campus is home to study lounges, libraries, gardens, cafés, a sports centre and the Global Lounge. There's plenty of space to study, socialise or relax.

## 2 Langford campus *(not shown on map)*

Bristol Veterinary School is 14 miles south of the city on its own countryside campus.

## 3 Temple Quarter Enterprise Campus *(not shown on map)*

Work has started on our ambitious new campus, which is part of one of Europe's biggest urban regeneration programmes.

## 4 Wapping Wharf

Discover exciting restaurants in converted shipping containers in this up-and-coming area.

 30 minutes

## 5 Harbourside

The harbourside is a cultural hub, buzzing with restaurants and bars, an independent cinema, and weekly markets. Come here to relax by the water and enjoy stunning sunsets.

 10 minutes

## 6 Cabot Tower

Take in the view from the top of Cabot Tower, or relax with friends in Brandon Hill park.

 10 minutes

## 7 Clifton Village

Clifton is a picturesque area full of Georgian and Regency architecture. Pick up a treat at one of the independent cafés, shops and delis.

 10 minutes

## 8 Park Street

Browse the shops on Park Street during a study break. At the top is the Wills Memorial Building, home to our graduation ceremonies.

 5 minutes

## 9 Stokes Croft *(not shown on map)*

Explore the streets of Stokes Croft for colourful murals, good food and new music.

 15 minutes

## Our Student Residential Villages

See page 16 for more information about your accommodation options.

## 10 East Residential Village 10 minutes

## 11 West Residential Village 15 minutes

## 12 North Residential Village *(not shown on map)* 40 minutes, or 20 minute bus journey

 Approximate walking times from the main Clifton campus





< 2

7

12

11

6

1

8

9

5

4

10

3

Explore Bristol with  
our virtual tour  
[bristol.ac.uk/  
virtual-tour](http://bristol.ac.uk/virtual-tour)



# YOUR STUDENT HOME

**Our University accommodation helps you settle into life in the UK and feel part of Bristol's student community.**

## **Our accommodation guarantee**

We guarantee to make you an offer of University accommodation, as long as you meet the criteria and deadline. Find out more on our website:

**[bristol.ac.uk/accommodation-guarantee](https://bristol.ac.uk/accommodation-guarantee)**

## **A variety of residences**

Our University accommodation is grouped into three Student Residential Villages: North, East and West Village.

We offer a range of self-catered and half-board accommodation. Self-catered residences have kitchen facilities so you can cook your own meals. Half-board residences have dining halls that provide two meals a day.



‘University accommodation is the best experience you can have as an international student. You have 24-hour support, events and activities that ensure you are not alone.’

**William, Ghana** (MSc Education: Learning, Technology and Society)



Hiatt Baker Hall



Durham Hall bedroom



Clifton Hill House

All rooms are furnished, with either an en suite or a shared bathroom. Every residence provides free internet and 24-hour security.

### Security and support

Our University accommodation is a safe and supportive environment, where you can make new friends, experience new things, and feel part of our vibrant student community.

Each Student Residential Village has a Student Support Centre. Here, the Residential Life team can provide expert help, support, and advice 24 hours a day, seven days a week.

Each residence also has Chief and Senior Residents who live alongside students. They provide pastoral support and can help with any personal problems.

### Social life and sports

Each residence has a social committee run by students, which organises a range of social events, fun activities, and sporting leagues, for all abilities. Students living in University accommodation can also join free exercise classes in the B:Active Residences programme.



Social room in Print Hall

### Accommodation costs

How much you pay depends on several factors. These include your room size, whether you have a basin or en suite, and the facilities in your residence and room.

Your accommodation fee includes electricity, gas and water bills, internet, a social fund contribution and basic contents insurance. Undergraduate students also receive a bus pass for our UniBus service.

Accommodation costs for the 2022/23 academic year can be found at **[bristol.ac.uk/accommodation/about/costs](https://bristol.ac.uk/accommodation/about/costs)**

### Private accommodation

If you prefer to rent privately, our dedicated advisers can help with everything from budgeting to landlords. Learn more at **[bristol.ac.uk/accommodation/privately-rented](https://bristol.ac.uk/accommodation/privately-rented)**

# OUR RESIDENCES

We have a wide variety of residences around the city of Bristol. Here are just a few options.



## Print Hall

- East Residential Village
- Postgraduate and undergraduate residence
- 490 places
- Self-catered
- 1.3 miles to campus
- From £7,644 per year



## Wills Hall

- North Residential Village
- Undergraduate residence
- 343 places
- Half-board
- 1.8 miles to campus
- From £8,085 per year



## Harbour Court

- West Residential Village
- Postgraduate residence
- 132 places
- Self-catered
- 0.8 miles to campus
- From £9,532 per year

These fees are per person and based on 2022/23 rates.  
Figures rounded to nearest pound.



Find the right accommodation for you by watching our student guides to each Residential Village:  
[bristol.ac.uk/accommodation-videos](https://bristol.ac.uk/accommodation-videos)





### East Residential Village

East Village residences are located around Bristol city centre, within close walking distance of the main campus. Students living here have easy access to a huge range of shops, cafés and restaurants. You're also near to the harbourside, a popular area for cultural events and nights out.



### West Residential Village

These residences are mostly based in and around Clifton, a popular suburb of Bristol with traditional architecture, café culture and green spaces. Clifton has a combination of busy shopping streets and quiet residential areas. Most West Village accommodation is around 15 minutes' walk from the main campus.



### North Residential Village

North Village is in the Stoke Bishop area of Bristol, around 2 miles from the main campus. The site includes large gardens and space for socialising and relaxing. It houses most of our half-board residences and is near the Coombe Dingle Sports Complex. A frequent bus service links North Village with the campus and city centre.

# SUPPORTING YOU

**We want you to make the most of your time at Bristol. Our student services are here to support all aspects of university life.**

## **A warm welcome**

Every September, our Global Lounge runs an exciting welcome programme focusing on international students. It's a great opportunity to meet other new students from the UK and around the world, and get your questions answered. The team can also give advice about travel and reaching your accommodation in Bristol.

## **Academic support**

Most taught students will have a personal tutor. Your tutor will meet with you often, provide pastoral and academic support, and direct you to specialist services. Research students will receive similar support through their supervisor.

Our Study Skills service provides support to help you in your classes. This includes interactive online resources, peer advice sessions, and individual tutorials and workshops delivered both in-person and online. Many degrees also offer subject-specific courses to develop your academic language and literacy. Try out our Study Skills resources at **[bristol.ac.uk/studyskills](http://bristol.ac.uk/studyskills)**

‘The University provides lots of support such as workshops about study skills, exams and assignments. Welcome events helped me to settle in and get prepared for my new life here.’

**Chun Qian, China** (MSc Finance and Investment)



## Visas

If you are not a British or Irish Citizen, you will most likely need to apply for a visa to come to the UK to study. Our dedicated Student Visas team can help you with your visa, both before you arrive and during your studies.

Our friendly visa advisers can offer immigration information and professional, confidential advice. Our comprehensive web pages can also help you prepare for the process. The latest guidance is available at [bristol.ac.uk/visas](https://bristol.ac.uk/visas)

## Healthcare

Most international students can access medical care through the National Health Service (NHS). The University's Student Health Service is a full NHS doctor's practice, available to students living nearby. There are also many other doctor's practices available across Bristol. For more information, visit [bristol.ac.uk/students-health/international-students](https://bristol.ac.uk/students-health/international-students)

## Wellbeing and mental health support

You can access the help you need by completing our Request for Support Form. This may include the Student Wellbeing Service, Residential Life team, or Student Counselling Service. All our support services are free and confidential. Find out more at [bristol.ac.uk/wellbeing](https://bristol.ac.uk/wellbeing)

Students with mental health conditions might face extra challenges when coming to university. If you have mental health difficulties, we recommend you tell us as soon as possible after accepting your offer. This means we can help you to set up your support network before you arrive. For information about the support available, visit [bristol.ac.uk/disability-services](https://bristol.ac.uk/disability-services)

## Disability Services

Our Disability Services team provides advice and study support. This is for all students with ongoing health conditions, mental health difficulties, specific learning difficulties, autism spectrum conditions, sensory impairments and mobility difficulties. If you have any of these, we encourage you to let us know before you arrive. This is so that we can help you find out about the support available and how to access it. Find out more at [bristol.ac.uk/disability-services](https://bristol.ac.uk/disability-services)

## Religion, faith and spirituality

The Multifaith Chaplaincy is a welcoming space for students of all faiths and none. It offers pastoral and spiritual support, religious information and advice, and regular events. See [bristol.ac.uk/chaplaincy](https://bristol.ac.uk/chaplaincy)

## Support if you have children

We have a subsidised day nursery on the main campus, open during weekdays throughout the year. The nursery can accommodate children from three months to five years old.

## Global Lounge

The Global Lounge is a cultural hub at the heart of campus. It's a place for all students to connect, learn from each other and find out about global opportunities. Regular social events and activities celebrate different cultures and strengthen our diverse community. Find out what's on at [bristol.ac.uk/global-lounge](https://bristol.ac.uk/global-lounge)



# SOCIETIES AND SPORT



'The University of Bristol has a wonderful community feel. Clubs, activities and events encourage you to expand your horizons and maximise personal and professional growth.'

**Edythe, USA** (MSc Global Wildlife Health and Conservation)



**With more than 350 clubs and societies for all interests, everyone can belong at Bristol.**

#### **Led by students, for students**

Every student at Bristol is a member of the Students' Union, Bristol SU. Elected SU representatives, including an International Students' Officer, work to get you the best from your time at university. The SU also offers confidential academic advice and places to socialise and relax on campus.



#### **Pursue your passions**

Bristol SU supports hundreds of student-run, interest-based clubs and societies. We've got everything from photography to baking and gardening to skydiving. There are more than 50 country-specific and religious societies – a great way to share your culture and feel closer to home.

Find your student group at [bristolsu.org.uk/groups](http://bristolsu.org.uk/groups)

#### **Student networks**

Bristol SU networks are a way for students to build communities and create change. The International Students' Network brings overseas students together through socials, campaigns and forums. Our other networks include the Sustainability Network, LGBT+ Network and Multifaith Network.

#### **Sport, exercise and health**

Bristol's excellent sport and exercise facilities can help you stay healthy and active. Facilities on campus include a two-floor gym, fitness classes, a double-sided sports hall, studios and a swimming pool. At our outdoor centre, Coombe Dingle Sports Complex, you can play cricket, football, hockey, lacrosse, netball, rugby, tennis and more.

You can play sport competitively or for fun by joining a team or sports club – there are more than 70 clubs supported by Bristol SU. In addition, student athletes can develop their sporting careers with the support of our Performance Team.

For more information, visit [bristol.ac.uk/sport](http://bristol.ac.uk/sport)

#### **Volunteering**

Volunteering is a great way to build confidence, develop your skills and make a positive impact in the community. It's easy to get involved and there's a huge range of opportunities. Choose a student-led project or work with charities and community groups across the city and beyond.

**350+**  
**clubs and societies**

**Explore Bristol SU at**  
[bristolsu.org.uk](http://bristolsu.org.uk)

# FEES AND COSTS

Find out the costs of studying and living in Bristol.

## Tuition fees

Tuition fees will depend on your course and your fee status. You can find international tuition fees (including EU) for the academic year 2023/24 in the following table.

Fees are reviewed every year and are not fixed for the duration of your studies. You should budget for an annual increase of up to 8% (this does not apply to undergraduate courses in medicine, dentistry and veterinary science).

For the latest information about tuition fees, visit

[bristol.ac.uk/tuition-fees](https://bristol.ac.uk/tuition-fees)

## Foundation and pre-sessional programme fees

Programme	Annual tuition fee 2023/24	Deposit
International Foundation Programme – Arts and Humanities	£23,300	£2,000
International Foundation Programme – Dentistry	£24,300	£2,000
International Foundation Programme – Science, Technology, Engineering and Mathematics	£24,300	£2,000
International Foundation Programme – Social Sciences and Law	£23,300	£2,000
Pre-sessional English language courses	£3,130 to £5,120	None†

## Undergraduate course fees

Course	Annual tuition fee 2023/24	Deposit
Arts-based subjects	£22,200 to £24,500	None
Science-based subjects	£27,200 to £29,000	None
BDS Dentistry	£43,100	None
MB ChB Medicine	£39,700	None
BVSc Veterinary Science	£36,300	None

## Postgraduate programme fees

Tuition fees vary depending on degree. Search for your programme online at [bristol.ac.uk/postgraduate](https://bristol.ac.uk/postgraduate). A deposit of £2,000 may be required.

## Cost of living

You can live well in Bristol for less than in London. The cost of living (including rent) is around 43% lower than in the capital.\*

For advice about student living costs, visit [bristol.ac.uk/living-expenses](https://bristol.ac.uk/living-expenses)

Grocery item	Typical cost*
1 litre milk	£1.02
1.5 litre bottled water	£0.98
1kg of onions	£0.97
1kg of bananas	£1.37
1kg of white rice	£1.60
1kg of potatoes	£1.39
12 eggs	£1.85
Cappuccino in a café	£3.31

\*numbeo.com, July 2022

†To secure your place on a pre-sessional course, you will be required to pay your full tuition fee as a deposit. Pre-sessional fees are refundable in full within 14 days of original payment. After this period, no refunds will be made for students withdrawing from study.



# SCHOLARSHIPS

We have a range of scholarships that can help fund your studies, as well as exclusive development opportunities for scholars.

## Think Big at Bristol

Our Think Big programme offers a range of scholarships for international students, including those from the EU.

For 2023, we are investing £3 million into our Think Big international scholarships.

Scholarships are available for eligible postgraduate master's programmes and undergraduate courses (excluding clinical courses).

# £3m

**in scholarships**

is available for international students in 2023/24

## Think Big Development Programme

As well as receiving financial support, Think Big scholarship winners have the opportunity to take part in our Think Big Development Programme. Exclusive to University of Bristol scholars, the programme aims to increase your confidence and employability, giving you the springboard you need to fulfil your potential and excel in your chosen field.

Our tailored framework will help you to develop holistically and cultivate core skills with a practical, straightforward approach. It also gives you the opportunity to network and build a community with other enthusiastic scholars. Of our 2021/22 scholars, 96% felt that the skills they developed will help them transition to the next chapter of their lives.

Find out more at [bristol.ac.uk/international-scholarships](https://bristol.ac.uk/international-scholarships)

## More funding

Other financial support may be available to help fund your studies. This includes a range of scholarships with our external partners. To find out more and check your eligibility, use our online funding search tool at [bristol.ac.uk/scholarships](https://bristol.ac.uk/scholarships)



'The Think Big Development Programme was well designed, engaging and interactive. This is like a new beginning for me – the programme made me feel I can do wonders.'

**Vivek, India** (MSc Environmental Policy and Management)

# ENTRY REQUIREMENTS

**We accept a wide range of qualifications and assess every application on individual merit.**

## International qualifications

You can find detailed information about accepted international qualifications online. Find your country at [bristol.ac.uk/international/countries](https://bristol.ac.uk/international/countries)

Our 6-week and 10-week pre-session courses offer the best possible preparation for your studies. We also run a one-year International Foundation Programme (IFP) for undergraduates. You can take the IFP before your degree if you don't quite meet the requirements for direct entry. Find out more at [bristol.ac.uk/academic-language](https://bristol.ac.uk/academic-language)

## English language requirements

International applicants need to have a good standard of English to study at Bristol. Different courses need different language levels, called profiles. You can find the language profile needed for each course on our online course listings.

You do not need to have the required English language profile before you apply. If you don't yet have the required qualifications, we will ask for these as part of your offer.

Find details of each English language profile and accepted qualifications at [bristol.ac.uk/study/language-requirements](https://bristol.ac.uk/study/language-requirements)

## Education agents

Bristol has agreements with various education representatives, or agents, around the world. Using an agent does not put you at an advantage or disadvantage when applying. Find a list of our agents in your country at [bristol.ac.uk/international/countries](https://bristol.ac.uk/international/countries)

## Other requirements

For some courses, you need to have studied specific subjects or take an admissions test. These requirements will be listed on the online course page.

## Mature students

A mature student is aged 21 or above when they start their undergraduate degree. We welcome applications from mature students and provide dedicated support. Find out about applying as a mature student at [bristol.ac.uk/mature](https://bristol.ac.uk/mature)

**View entry requirements  
for your country at**  
[bristol.ac.uk/international/  
countries](https://bristol.ac.uk/international/countries)

# HOW TO APPLY

From exploring the University to receiving an offer, find out more about your student journey.

## Events and visits

Our friendly staff attend education events worldwide. You can also explore Bristol from home with our virtual tour and online events. Find out more at [bristol.ac.uk/international-visits](https://bristol.ac.uk/international-visits)

## How to apply

### International Foundation Programme

Applicants based in mainland China should apply through our China Office. Other applicants should apply through Kaplan International Pathways, our recruitment and admissions partner. Find out how at [bristol.ac.uk/ifp-apply](https://bristol.ac.uk/ifp-apply)

## Undergraduate courses

Most applicants should apply through the Universities and Colleges Admissions Service (UCAS). Our UCAS institution code is BRISL B78. For more details and exceptions, see [bristol.ac.uk/international-ug-apply](https://bristol.ac.uk/international-ug-apply)

## Postgraduate programmes

Apply using our online application form at [bristol.ac.uk/pg-apply](https://bristol.ac.uk/pg-apply)

If you are a postgraduate research applicant, you may need to propose your own area of study. You can find out what your research proposal should contain on the online course pages. You can also search for a potential supervisor on your course page. We recommend emailing your chosen supervisor to discuss your proposal before applying.

## Deadlines

Some courses have application deadlines. Check the deadline for your degree on our online course pages.

Bear in mind that some scholarships will have their own application deadlines. You often need to apply for your chosen degree before you can apply for funding.

## Offer types

A conditional offer means you need to achieve specified grades to take up your place. This may include English language requirements. An unconditional offer means you have already met all the academic requirements.

## How we assess your application

Our admissions statements contain important information about how we assess applications. We publish admissions statements for every course on the online course pages. Updated statements for 2023 entry will be available in summer 2022.



# COURSES AND PROGRAMMES

**We offer hundreds of courses and programmes across a range of levels. Find out more about our degrees.**

## Undergraduate courses

Undergraduate courses usually lead to a bachelor's degree (such as BA, BSc or LLB). We offer single honours and joint honours courses, so you can study one or two subjects.

Most undergraduate courses take three years of full-time study. Some degrees include an extra year abroad or in industry. In many subjects you can choose a four-year course that leads to a master's degree (such as MEng or MSci). Dentistry, medicine and veterinary science degrees usually take five years.

## Postgraduate taught programmes

Postgraduate taught programmes lead to a master's degree (such as MA, MSc, MRes or LLM). They combine taught units with a research project, and usually take one year of full-time study. We also offer Postgraduate Diplomas (PGDip) and Certificates (PGCert) in some subjects.

## Postgraduate research programmes

A postgraduate research degree is also known as a doctoral programme. Doctoral students conduct original research under the supervision of academic experts.

- A Doctor of Philosophy (PhD) is the most common research degree. This usually takes three to four years of full-time study.
- We also offer one-year or two-year master's by research degrees (such as MScR, MPhil or MMus). These include a structured research project.
- Professional doctorates (such as EdD, EngD, DEdPsych or MD) are for those who are already qualified to an advanced level. If you are a specialist in your field, these can help you to deepen your knowledge.

## Pre-sessional and foundation courses

A summer pre-sessional course will provide the academic communication skills you need to succeed. It can also help you meet the language requirements of your chosen programme.

Our one-year International Foundation Programme can be taken before starting an undergraduate degree. It will help you improve your academic knowledge, language and literacy.

## Intercalated courses

Current medical, dental and veterinary students can apply to intercalate at Bristol. You will complete an extra degree in an intensive year away from your normal studies.

# 600+

courses and programmes

## Pre-sessional courses

Search for a pre-sessional course at [bristol.ac.uk/academic-language](https://bristol.ac.uk/academic-language)

Course	Duration
For undergraduate and postgraduate offer holders: June start	10 weeks, plus a compulsory induction week
For undergraduate and postgraduate offer holders: July start	6 weeks

## International Foundation Programme

Search for an International Foundation Programme at [bristol.ac.uk/ifp](https://bristol.ac.uk/ifp)

Programme	Duration
Arts and Humanities pathway	1 year
Dentistry pathway	1 year
Science, Technology, Engineering and Mathematics pathway	1 year
Social Sciences and Law pathway	1 year

## Intercalated degrees

Search for an intercalated degree at [bristol.ac.uk/intercalate](https://bristol.ac.uk/intercalate)

### Standalone courses:

Bioethics (BSc)
Child Health Research (BSc)
Clinical Sciences (BSc)
Epidemiology (MSc)
Functional and Clinical Anatomy (BSc)
Genomic Medicine (BSc)
Global Health (BSc)
Global Wildlife Health and Conservation (MSc)
Health, Law and Society (LLM)
Health Sciences Research (MRes)
Health Sciences Research (Renal) (MRes)
Health Sciences Research (Translational Cardiovascular Medicine) (MRes)
Medical Humanities (BA)
Public Health (MSc)
Translational Cardiovascular Medicine (MSc)

### One-year entry onto three-year courses:

Biochemistry with Medical Biochemistry (BSc)
Cancer Biology and Immunology (BSc)
Cellular and Molecular Medicine (BSc)
Childhood Studies (BSc)
Medical Microbiology (BSc)
Social Policy (BSc)
Virology and Immunology (BSc)
Zoology (BSc)

# UNDERGRADUATE COURSES

Search for an undergraduate course at [bristol.ac.uk/undergraduate](http://bristol.ac.uk/undergraduate)

Course	UCAS code	Length	Typical A-level offer	Typical IB offer
<b>ACCOUNTING AND FINANCE</b>				
BSc Accounting and Finance	NN43	3 years	AAA	36
BSc Accounting and Finance with Professional Placement	†	4 years	AAA	36
BSc Accounting and Finance with Study Abroad	NN46	4 years	AAA	36
BSc Accounting and Management	NN42	3 years	AAA	36
BSc Accounting and Management with Professional Placement	†	4 years	AAA	36
BSc Accounting and Management with Study Abroad	NN45	4 years	AAA	36
BSc Economics and Accounting	LN14	3 years	AAA	36
BSc Economics and Accounting with Professional Placement	†	4 years	AAA	36
BSc Economics and Accounting with Study Abroad	LN16	4 years	AAA	36
BSc Economics and Finance	LN13	3 years	AAA	36
BSc Economics and Finance with Study Abroad	LN15	4 years	AAA	36
BSc Finance	N300	3 years	AAA	36

Course	UCAS code	Length	Typical A-level offer	Typical IB offer
<b>AEROSPACE ENGINEERING</b>				
BEng Aerospace Engineering	H405	3 years	A*AA	38
MEng Aerospace Engineering	H410	4 years	A*AA	38
MEng Aerospace Engineering with a Year in Industry	†	5 years	A*AA	38
MEng Aerospace Engineering with Study Abroad	†	4 years	A*AA	38
MEng Aerospace Engineering with Study Abroad in a Modern Language	H401	4 years	A*AA	38
<b>ANCIENT HISTORY</b>				
BA Ancient History	V110	3 years	AAB	34
<b>ANTHROPOLOGY AND ARCHAEOLOGY</b>				
BA Anthropology	XD49	3 years	AAB	34
BA Archaeology and Anthropology	VL46	3 years	AAB	34
MArts Anthropology with Innovation	XD50	4 years	AAB	34
<b>APPLIED ANATOMY</b>				
BSc Applied Anatomy	B112	3 years	ABB	32
<b>BIOCHEMISTRY</b>				
BSc Biochemistry	C700	3 years	AAA	36
BSc Biochemistry with Medical Biochemistry	C720	3 years	AAA	36
BSc Biochemistry with Molecular Biology and Biotechnology	C790	3 years	AAA	36
BSc Biochemistry with Study in Industry	†	4 years	AAA	36
MSci Biochemistry	C701	4 years	AAA	36
MSci Biochemistry with Medical Biochemistry	C721	4 years	AAA	36
MSci Biochemistry with Molecular Biology and Biotechnology	C791	4 years	AAA	36

Course	UCAS code	Length	Typical A-level offer	Typical IB offer
<b>BIOLOGICAL SCIENCES</b>				
BSc Biology	C100	3 years	AAA	36
BSc Biology with Professional Placement	†	4 years	AAA	36
BSc Plant Sciences	C201	3 years	AAA	36
BSc Plant Sciences with Professional Placement	†	4 years	AAA	36
BSc Zoology	C300	3 years	AAA	36
BSc Zoology with Professional Placement	†	4 years	AAA	36
MSci Biology	C103	4 years	AAA	36
MSci Biology with Professional Placement	†	5 years	AAA	36
MSci Plant Sciences	C203	4 years	AAA	36
MSci Plant Sciences with Professional Placement	†	5 years	AAA	36
MSci Zoology	C303	4 years	AAA	36
MSci Zoology with Professional Placement	†	5 years	AAA	36
<b>BIOMEDICAL SCIENCES</b>				
BSc Biomedical Sciences	B900	3 years	AAA	36
<b>BUSINESS AND MANAGEMENT</b>				
BSc Accounting and Management	NN42	3 years	AAA	36
BSc Accounting and Management with Professional Placement	†	4 years	AAA	36
BSc Accounting and Management with Study Abroad	NN45	4 years	AAA	36
BSc Business Analytics*	N100	3 years	AAA	36
BSc Business and Management	N200	3 years	AAA	36
BSc Business and Management with Study Abroad	N201	4 years	AAA	36
BSc Business and Management with Study Abroad in a Modern Language	4H56	4 years	AAA	36



Course	UCAS code	Length	Typical A-level offer	Typical IB offer
BSc Economics and Management	LN12	3 years	AAA	36
BSc Economics and Management with Study Abroad	LN17	4 years	AAA	36
<b>CELLULAR AND MOLECULAR MEDICINE</b>				
BSc Cancer Biology and Immunology	B131	3 years	AAB	34
BSc Cancer Biology and Immunology with Study in Industry	†	4 years	AAB	34
BSc Cellular and Molecular Medicine	B130	3 years	AAB	34
BSc Cellular and Molecular Medicine with Study in Industry	†	4 years	AAB	34
BSc Medical Microbiology	C521	3 years	AAB	34
BSc Medical Microbiology with Study in Industry	†	4 years	AAB	34
BSc Virology and Immunology	C540	3 years	AAB	34
BSc Virology and Immunology with Study in Industry	†	4 years	AAB	34
MSci Cancer Biology and Immunology	B132	4 years	AAB	34
MSci Cellular and Molecular Medicine	B133	4 years	AAB	34
MSci Medical Microbiology	C522	4 years	AAB	34
MSci Virology and Immunology	C541	4 years	AAB	34
<b>CHEMICAL PHYSICS</b>				
BSc Chemical Physics	F320	3 years	AAA	36
MSci Chemical Physics	F322	4 years	A*AA	38
MSci Chemical Physics with Industrial Experience	F323	4 years	A*AA	38

Course	UCAS code	Length	Typical A-level offer	Typical IB offer
<b>CHEMISTRY</b>				
BSc Chemistry	F100	3 years	AAA	36
MSci Chemistry	F103	4 years	A*AA	38
MSci Chemistry with Industrial Experience	F105	4 years	A*AA	38
MSci Chemistry with Study Abroad	F107	4 years	A*AA	38
MSci Chemistry with Study Abroad in a Modern Language	F104	4 years	A*AA	38
<b>CHEMISTRY WITH COMPUTING</b>				
BSc Chemistry with Computing	F130	3 years	AAA	36
MSci Chemistry with Computing	F131	4 years	A*AA	38
<b>CHILDHOOD STUDIES</b>				
BSc Childhood Studies	L520	3 years	ABB	32
BSc Childhood Studies with Study Abroad	L525	4 years	ABB	32
BSc Childhood Studies with Quantitative Research Methods	L522	3 years	ABB	32
MSci Childhood Studies with Innovation	L526	4 years	ABB	32
MSci Childhood Studies with Quantitative Research Methods	L523	4 years	ABB	32
<b>CIVIL ENGINEERING</b>				
BEng Civil Engineering	H205	3 years	A*AA	38
MEng Civil Engineering	H200	4 years	A*AA	38
MEng Civil Engineering with a Year in Industry	†	5 years	A*AA	38
MEng Civil Engineering with Study Abroad	†	4 years	A*AA	38
MEng Civil Engineering with Study Abroad in a Modern Language	H201	4 years	A*AA	38

Course	UCAS code	Length	Typical A-level offer	Typical IB offer
<b>CLASSICAL STUDIES</b>				
BA Classical Studies	Q810	3 years	AAB	34
BA English and Classical Studies	QQ38	3 years	AAA	36
<b>CLASSICS</b>				
BA Classics	Q800	3 years	AAB	34
<b>COMPARATIVE LITERATURES AND CULTURES</b>				
BA Comparative Literatures and Cultures	Q200	3 years	AAB	34
BA Comparative Literatures and Cultures and French	QR38	4 years	ABB	32
BA Comparative Literatures and Cultures and German	QR40	4 years	ABB	32
BA Comparative Literatures and Cultures and Italian	QR41	4 years	ABB	32
BA Comparative Literatures and Cultures and Portuguese	QR42	4 years	ABB	32
BA Comparative Literatures and Cultures and Russian	QR43	4 years	ABB	32
BA Comparative Literatures and Cultures and Spanish	QR39	4 years	ABB	32

Course	UCAS code	Length	Typical A-level offer	Typical IB offer
<b>COMPUTER SCIENCE</b>				
BEng Computer Science and Electronics	GH45	3 years	AAA	36
BSc Computer Science	G400	3 years	A*AA	38
BSc Mathematics and Computer Science	GG14	3 years	A*A*A	40
MEng Computer Science	G403	4 years	A*AA	38
MEng Computer Science and Electronics	GH46	4 years	AAA	36
MEng Computer Science and Electronics with Study Abroad	GH4P	4 years	AAA	36
MEng Computer Science with Study Abroad	†	4 years	A*AA	38
MEng Computer Science with Innovation	G404	4 years	A*AA	38
MEng Mathematics and Computer Science	GG1K	4 years	A*A*A	40
<b>CRIMINOLOGY</b>				
BSc Criminology	M900	3 years	AAB	34
BSc Criminology with Quantitative Research Methods	M902	3 years	AAB	34
BSc Criminology with Study Abroad	M901	4 years	AAB	34
BSc Social Policy with Criminology	LM49	3 years	AAB	34
MSci Criminology with Quantitative Research Methods	M903	4 years	AAB	34
<b>DENTAL HYGIENE AND THERAPY</b>				
BSc Dental Hygiene and Therapy	B750	3 years	ABB	32
<b>DENTISTRY</b>				
BDS Dentistry	A206	5 years	AAA	36
<b>ECONOMICS</b>				
BSc Economics	L100	3 years	A*AA	38
BSc Economics and Accounting	LN14	3 years	AAA	36
BSc Economics and Accounting with Professional Placement	†	4 years	AAA	36

Course	UCAS code	Length	Typical A-level offer	Typical IB offer
BSc Economics and Accounting with Study Abroad	LN16	4 years	AAA	36
BSc Economics and Econometrics	L140	3 years	A*AA	38
BSc Economics and Econometrics with Study Abroad	L142	4 years	A*AA	38
BSc Economics and Finance	LN13	3 years	AAA	36
BSc Economics and Finance with Study Abroad	LN15	4 years	AAA	36
BSc Economics and Management	LN12	3 years	AAA	36
BSc Economics and Management with Study Abroad	LN17	4 years	AAA	36
BSc Economics and Mathematics	LG11	3 years	A*AA	38
BSc Economics and Politics	LL12	3 years	AAA	36
BSc Economics and Politics with Study Abroad	LL14	4 years	AAA	36
BSc Economics with Study Abroad	L105	4 years	A*AA	38
BSc Economics with Study Abroad in a Modern Language	L101	4 years	A*AA	38
BSc Philosophy and Economics	VL51	3 years	AAA	36
BSc Philosophy and Economics with Study Abroad	VL54	4 years	AAA	36
MSci Economics with Innovation	L104	4 years	A*AA	38
<b>EDUCATION</b>				
BSc Education Studies	X300	3 years	ABB	32
BSc Education Studies with Study Abroad	X304	4 years	ABB	32
BSc Psychology in Education	X301	3 years	ABB	32
BSc Psychology in Education with Study Abroad	X305	4 years	ABB	32

Course	UCAS code	Length	Typical A-level offer	Typical IB offer
<b>ELECTRICAL AND ELECTRONIC ENGINEERING</b>				
BEng Computer Science and Electronics	GH45	3 years	AAA	36
BEng Electrical and Electronic Engineering	H600	3 years	AAA	36
BEng Mechanical and Electrical Engineering	H361	3 years	AAA	36
MEng Computer Science and Electronics	GH46	4 years	AAA	36
MEng Computer Science and Electronics with Study Abroad	GH4P	4 years	AAA	36
MEng Electrical and Electronic Engineering	H606	4 years	AAA	36
MEng Electrical and Electronic Engineering with a Year in Industry	†	5 years	AAA	36
MEng Electrical and Electronic Engineering with Innovation	H604	4 years	AAA	36
MEng Electrical and Electronic Engineering with Study Abroad	†	4 years	AAA	36
MEng Electrical and Electronic Engineering with Study Abroad in a Modern Language	H605	4 years	AAA	36
MEng Mechanical and Electrical Engineering	H360	4 years	AAA	36
MEng Mechanical and Electrical Engineering with a Year in Industry	†	5 years	AAA	36
<b>ENGINEERING DESIGN</b>				
MEng Engineering Design with Study in Industry	H150	5 years	A*AA	38
<b>ENGINEERING MATHEMATICS</b>				
BEng Engineering Mathematics	G162	3 years	AAA	36
MEng Engineering Mathematics	G161	4 years	AAA	36
MEng Engineering Mathematics with a Year in Industry	†	5 years	AAA	36
MEng Engineering Mathematics with Study Abroad	G160	4 years	AAA	36

Course	UCAS code	Length	Typical A-level offer	Typical IB offer
<b>ENGLISH</b>				
BA English	Q300	3 years	AAA	36
BA English with Study Abroad	Q301	4 years	AAA	36
BA English and Classical Studies	QQ38	3 years	AAA	36
BA English and French	QR31	4 years	AAA	36
BA English and German	QR32	4 years	AAA	36
BA English and History	QV31	3 years	AAA	36
BA English and Italian	QR33	4 years	AAA	36
BA English and Philosophy	QV35	3 years	AAA	36
BA English and Portuguese	QR35	4 years	AAA	36
BA English and Russian	QR37	4 years	AAA	36
BA English and Spanish	QR34	4 years	AAA	36
BA Film and English	6T3X	3 years	AAA	36
BA Theatre and English	4CC8	3 years	AAA	36
<b>ENVIRONMENTAL GEOSCIENCE</b>				
BSc Environmental Geoscience	F640	3 years	AAB	34
MSci Environmental Geoscience	F641	4 years	AAB	34
MSci Environmental Geoscience with Study Abroad	F644	4 years	AAB	34
<b>FILM AND TELEVISION</b>				
BA Film and English	6T3X	3 years	AAA	36
BA Film and French	2LK6	4 years	AAB	34
BA Film and German	4F29	4 years	AAB	34
BA Film and Italian	4L92	4 years	AAB	34
BA Film and Portuguese	4PP8	4 years	AAB	34
BA Film and Spanish	L288	4 years	AAB	34
BA Film and Television	4M5N	3 years	AAB	34
BA Theatre and Film	4KDU	3 years	AAB	34
MArts Film and Television with Innovation	4M50	4 years	AAB	34

Course	UCAS code	Length	Typical A-level offer	Typical IB offer
<b>FRENCH</b>				
BA Modern Languages	R900	4 years	ABB	32
BA Comparative Literatures and Cultures and French	QR38	4 years	ABB	32
BA English and French	QR31	4 years	AAA	36
BA Film and French	2LK6	4 years	AAB	34
BA History and French	VR11	4 years	AAA	36
BA History of Art and French	VR31	4 years	ABB	32
BA International Business Management and French	NR11	4 years	AAA	36
BA Music and French	WR31	4 years	AAB	34
BA Philosophy and French	RV15	4 years	AAB	34
BA Politics and French	RL12	4 years	AAB	34
BA Theatre and French	W43F	4 years	AAB	34
LLB Law and French	MR11	4 years	A*AA	38
<b>GEOGRAPHY</b>				
BSc Geography	F800	3 years	AAA	36
BSc Geography with Quantitative Research Methods	F802	3 years	AAA	36
BSc Geography with Study Abroad	09F4	4 years	AAA	36
BSc Geography with Study Abroad in a Modern Language	F801	4 years	AAA	36
MSci Geography with Innovation	F805	4 years	AAA	36
MSci Geography with Quantitative Research Methods	F804	4 years	AAA	36
<b>GEOLOGY</b>				
BSc Geology	F600	3 years	AAB	34
MSci Geology	F603	4 years	AAB	34
MSci Geology with Study Abroad	F609	4 years	AAB	34

Course	UCAS code	Length	Typical A-level offer	Typical IB offer
<b>GEOPHYSICS</b>				
BSc Geophysics	F661	3 years	AAB	34
MSci Geophysics	F662	4 years	AAB	34
MSci Geophysics with Study Abroad	F663	4 years	AAB	34
<b>GERMAN</b>				
BA Modern Languages	R900	4 years	ABB	32
BA Comparative Literatures and Cultures and German	QR40	4 years	ABB	32
BA English and German	QR32	4 years	AAA	36
BA Film and German	4F29	4 years	AAB	34
BA History and German	VR12	4 years	AAA	36
BA History of Art and German	VR32	4 years	ABB	32
BA International Business Management and German	NR12	4 years	AAA	36
BA Music and German	WR32	4 years	AAB	34
BA Philosophy and German	RV25	4 years	AAB	34
BA Politics and German	RL22	4 years	AAB	34
BA Theatre and German	21C7	4 years	AAB	34
LLB Law and German	MR12	4 years	A*AA	38
<b>HISTORY</b>				
BA English and History	QV31	3 years	AAA	36
BA History	V100	3 years	AAA	36
BA History with Study Abroad	V102	4 years	AAA	36
BA History and French	VR11	4 years	AAA	36
BA History and German	VR12	4 years	AAA	36
BA History and Italian	VR13	4 years	AAA	36
BA History and Portuguese	VR15	4 years	AAA	36
BA History and Russian	VR17	4 years	AAA	36
BA History and Spanish	VR14	4 years	AAA	36
MArts History with Innovation	V104	4 years	AAA	36



Course	UCAS code	Length	Typical A-level offer	Typical IB offer
<b>HISTORY OF ART</b>				
BA History of Art	V350	3 years	ABB	32
BA History of Art and French	VR31	4 years	ABB	32
BA History of Art and German	VR32	4 years	ABB	32
BA History of Art and Italian	VR33	4 years	ABB	32
BA History of Art and Portuguese	VR35	4 years	ABB	32
BA History of Art and Russian	VR37	4 years	ABB	32
BA History of Art and Spanish	VR34	4 years	ABB	32
<b>INNOVATION</b>				
MArts Anthropology with Innovation	XD50	4 years	AAB	34
MArts Film and TV with Innovation	4M50	4 years	AAB	34
MArts History with Innovation	V104	4 years	AAA	36
MArts Music with Innovation	W304	4 years	AAB	34
MArts Theatre with Innovation	2Q50	4 years	AAB	34
MEng Computer Science with Innovation	G404	4 years	A*AA	38
MEng Electrical and Electronic Engineering with Innovation	H604	4 years	AAA	36
MSci Childhood Studies with Innovation	L526	4 years	ABB	32
MSci Economics with Innovation	L104	4 years	A*AA	38
MSci Geography with Innovation	F805	4 years	AAA	36
MSci Business and Management with Innovation	N204	4 years	AAA	36

Course	UCAS code	Length	Typical A-level offer	Typical IB offer
MSci Physics with Innovation	F306	4 years	A*AA	38
MSci Psychology with Innovation	C804	4 years	A*AA	38
MSci Social Policy with Innovation	L405	4 years	AAB	34
<b>INTERNATIONAL BUSINESS MANAGEMENT ITALIAN</b>				
BA International Business Management and French	NR11	4 years	AAA	36
BA International Business Management and German	NR12	4 years	AAA	36
BA International Business Management and Spanish	NR14	4 years	AAA	36
BSc International Business Management	N120	3 years	AAA	36
BSc International Business Management with Study Abroad	N121	4 years	AAA	36
BSc International Business Management with Study Abroad in a Modern Language	N122	4 years	AAA	36
<b>ITALIAN</b>				
BA Modern Languages	R900	4 years	ABB	32
BA Comparative Literatures and Cultures and Italian	QR41	4 years	ABB	32
BA English and Italian	QR33	4 years	AAA	36
BA Film and Italian	4L92	4 years	AAB	34
BA History and Italian	VR13	4 years	AAA	36
BA History of Art and Italian	VR33	4 years	ABB	32
BA Music and Italian	WR33	4 years	AAB	34
BA Philosophy and Italian	RV35	4 years	AAB	34
BA Politics and Italian	RL32	4 years	AAB	34
BA Theatre and Italian	22FF	4 years	AAB	34

Course	UCAS code	Length	Typical A-level offer	Typical IB offer
<b>LAW</b>				
LLB Law	M100	3 years	A*AA	38
LLB Law and French	MR11	4 years	A*AA	38
LLB Law and German	MR12	4 years	A*AA	38
LLB Law and Spanish	MR13	4 years	A*AA	38
LLB Law with Study Abroad	†	4 years	A*AA	38
LLB Law with Study in Continental Europe	‡	4 years	A*AA	38
<b>LIBERAL ARTS</b>				
BA Liberal Arts	2ZB7	3 years	AAA	36
MLibArts Liberal Arts with Study Abroad	2T23	4 years	AAA	36
<b>MARKETING</b>				
BSc Marketing	N500	3 years	AAA	36
BSc Marketing with Study Abroad	N504	4 years	AAA	36
BSc Marketing with Study Abroad in a Modern Language	N501	4 years	AAA	36
<b>MATHEMATICS</b>				
BSc Data Science	G1G5	3 years	A*AA	38
BSc Data Science with a Year in Industry	G1G6	4 years	A*AA	38
BSc Economics and Mathematics	LG11	3 years	A*AA	38
BSc Mathematics	G100	3 years	A*A*A	40
BSc Mathematics and Computer Science	GG14	3 years	A*A*A	40
BSc Mathematics and Philosophy	VG51	3 years	A*AA	38
BSc Mathematics and Physics	GFD3	3 years	A*AA	38
BSc Mathematics with Statistics	G1G3	3 years	A*A*A	40
BSc Mathematics with Statistics for Finance	G1G4	3 years	A*A*A	40

Course	UCAS code	Length	Typical A-level offer	Typical IB offer
BSc Mathematics with Study Abroad in a Modern Language	G101	4 years	A*A*A	40
MEng Mathematics and Computer Science	GG1K	4 years	A*A*A	40
MSci Mathematics	G103	4 years	A*A*A	40
MSci Mathematics and Philosophy	GV15	4 years	A*AA	38
MSci Mathematics and Physics	GFC3	4 years	A*AA	38
MSci Mathematics with Statistics	G1GH	4 years	A*A*A	40
MSci Mathematics with Study Abroad	G105	4 years	A*A*A	40
MSci Mathematics with Study Abroad in a Modern Language	G104	4 years	A*A*A	40
<b>MECHANICAL ENGINEERING</b>				
BEng Mechanical Engineering	H305	3 years	A*AA	38
BEng Mechanical and Electrical Engineering	H361	3 years	AAA	36
MEng Mechanical Engineering	H300	4 years	A*AA	38
MEng Mechanical Engineering with a Year in Industry	†	5 years	A*AA	38
MEng Mechanical Engineering with Study Abroad	†	4 years	A*AA	38
MEng Mechanical Engineering with Study Abroad in a Modern Language	H301	4 years	A*AA	38
MEng Mechanical and Electrical Engineering	H360	4 years	AAA	36
MEng Mechanical and Electrical Engineering with a Year in Industry	†	5 years	AAA	36

Course	UCAS code	Length	Typical A-level offer	Typical IB offer
<b>MEDICINE</b>				
MB ChB Medicine	A100	5 years	AAA	36
<b>MODERN LANGUAGES</b>				
BA Modern Languages	R900	4 years	ABB	32
<b>MUSIC</b>				
BA Music	W300	3 years	AAB	34
BA Music and French	WR31	4 years	AAB	34
BA Music and German	WR32	4 years	AAB	34
BA Music and Italian	WR33	4 years	AAB	34
BA Music and Portuguese	WR35	4 years	AAB	34
BA Music and Russian	WR37	4 years	AAB	34
BA Music and Spanish	WR34	4 years	AAB	34
MArts Music with Innovation	W304	4 years	AAB	34
<b>NEUROSCIENCE</b>				
BSc Neuroscience	B140	3 years	AAA	36
MSci Neuroscience	B141	4 years	AAA	36
MSci Neuroscience with Study in Industry	†	4 years	AAA	36
MSci Psychology and Neuroscience	CB81	4 years	A*AA	38
<b>PALAEONTOLOGY AND EVOLUTION</b>				
BSc Palaeontology and Evolution	CF17	3 years	AAB	34
MSci Palaeontology and Evolution	CF16	4 years	AAB	34
<b>PHARMACOLOGY</b>				
BSc Pharmacology	B210	3 years	AAB	34
MSci Pharmacology	B212	4 years	AAB	34
MSci Pharmacology with Study in Industry	B211	4 years	AAB	34

Course	UCAS code	Length	Typical A-level offer	Typical IB offer
<b>PHILOSOPHY</b>				
BA English and Philosophy	QV35	3 years	AAA	36
BA Philosophy	V500	3 years	AAA	36
BA Philosophy and French	RV15	4 years	AAB	34
BA Philosophy and German	RV25	4 years	AAB	34
BA Philosophy and Italian	RV35	4 years	AAB	34
BA Philosophy and Portuguese	RV55	4 years	AAB	34
BA Philosophy and Russian	RV75	4 years	AAB	34
BA Philosophy and Spanish	RV45	4 years	AAB	34
BA Philosophy and Theology	VV56	3 years	AAA	36
BSc Mathematics and Philosophy	VG51	3 years	A*AA	38
BSc Philosophy and Economics	VL51	3 years	AAA	36
BSc Philosophy and Economics with Study Abroad	VL54	4 years	AAA	36
BSc Philosophy and Politics	VL52	3 years	AAA	36
BSc Physics and Philosophy	FV35	3 years	A*AA	38
BSc Sociology and Philosophy	LV35	3 years	AAB	34
MSci Mathematics and Philosophy	GV15	4 years	A*AA	38
MSci Physics and Philosophy	FVH5	4 years	A*AA	38

Course	UCAS code	Length	Typical A-level offer	Typical IB offer
<b>PHYSICS</b>				
BSc Mathematics and Physics	GFD3	3 years	A*AA	38
BSc Physics	F300	3 years	A*AA	38
BSc Physics and Philosophy	FV35	3 years	A*AA	38
BSc Physics with Astrophysics	F3F5	3 years	A*AA	38
MSci Mathematics and Physics	GFC3	4 years	A*AA	38
MSci Physics	F303	4 years	A*AA	38
MSci Physics and Philosophy	FVH5	4 years	A*AA	38
MSci Physics with Astrophysics	F3FM	4 years	A*AA	38
MSci Physics with Industrial Experience	F305	4 years	A*AA	38
MSci Physics with Innovation	F306	4 years	A*AA	38
MSci Physics with International Experience	F307	4 years	A*AA	38
MSci Physics with Study Abroad in a Modern Language	F304	4 years	A*AA	38
MSci Theoretical Physics	F340	4 years	A*AA	38
<b>PHYSICS WITH COMPUTING</b>				
BSc Physics with Computing	F330	3 years	A*AA	38
MSci Physics with Computing	F331	4 years	A*AA	38
MSci Physics with Computing with Industrial Experience	F334	4 years	A*AA	38
<b>PHYSIOLOGICAL SCIENCE</b>				
BSc Physiological Science	B120	3 years	AAB	34
MSci Physiological Science	B122	4 years	AAB	34
MSci Physiological Science with Study in Industry	†	4 years	AAB	34

Course	UCAS code	Length	Typical A-level offer	Typical IB offer
<b>POLITICS AND INTERNATIONAL RELATIONS</b>				
BA Politics and French	RL12	4 years	AAB	34
BA Politics and German	RL22	4 years	AAB	34
BA Politics and Italian	RL32	4 years	AAB	34
BA Politics and Portuguese	RL52	4 years	AAB	34
BA Politics and Russian	RL72	4 years	AAB	34
BA Politics and Spanish	RL42	4 years	AAB	34
BSc Economics and Politics	LL12	3 years	AAA	36
BSc Economics and Politics with Study Abroad	LL14	4 years	AAA	36
BSc Philosophy and Politics	VL52	3 years	AAA	36
BSc Politics and International Relations	L200	3 years	AAA	36
BSc Politics and International Relations with Study Abroad	L201	4 years	AAA	36
BSc Politics and Sociology	LL23	3 years	AAB	34
BSc Politics with Quantitative Research Methods	L202	3 years	AAA	36
BSc Politics with Quantitative Research Methods with Study Abroad	L204	4 years	AAA	36
BSc Social Policy and Politics	LL42	3 years	AAB	34
MSci Politics with Quantitative Research Methods	L203	4 years	AAA	36
<b>PORTUGUESE</b>				
BA Modern Languages	R900	4 years	ABB	32
BA Comparative Literatures and Cultures and Portuguese	QR42	4 years	ABB	32
BA English and Portuguese	QR35	4 years	AAA	36
BA Film and Portuguese	4PP8	4 years	AAB	34

Course	UCAS code	Length	Typical A-level offer	Typical IB offer
BA History and Portuguese	VR15	4 years	AAA	36
BA History of Art and Portuguese	VR35	4 years	ABB	32
BA Music and Portuguese	WR35	4 years	AAB	34
BA Philosophy and Portuguese	RV55	4 years	AAB	34
BA Politics and Portuguese	RL52	4 years	AAB	34
BA Theatre and Portuguese	R2D8	4 years	AAB	34
<b>PSYCHOLOGY</b>				
BSc Psychology	C801	3 years	A*AA	38
MSci Psychology with Innovation	C804	4 years	A*AA	38
MSci Psychology and Neuroscience	CB81	4 years	A*AA	38
<b>QUANTITATIVE RESEARCH METHODS (QRM)</b>				
BSc Childhood Studies with QRM	L522	3 years	ABB	32
BSc Criminology with QRM	M902	3 years	AAB	34
BSc Geography with QRM	F802	3 years	AAA	36
BSc Politics with QRM	L202	3 years	AAA	36
BSc Politics with QRM with Study Abroad	L204	4 years	AAA	36
BSc Social Policy with QRM	L402	3 years	AAB	34
BSc Sociology with QRM	L302	3 years	AAB	34
BSc Sociology with QRM with Study Abroad	L304	4 years	AAB	34
MSci Childhood Studies with QRM	L523	4 years	ABB	32
MSci Criminology with QRM	M903	4 years	AAB	34
MSci Geography with QRM	F804	4 years	AAA	36

Course	UCAS code	Length	Typical A-level offer	Typical IB offer
MSci Politics with QRM	L203	4 years	AAA	36
MSci Social Policy with QRM	L403	4 years	AAB	34
MSci Sociology with QRM	L303	4 years	AAB	34
<b>RELIGION AND THEOLOGY</b>				
BA Philosophy and Theology	VV56	3 years	AAA	36
BA Religion and Theology	V600	3 years	AAB	34
BA Theology and Sociology	VL63	3 years	AAB	34
MArts Religion and Theology with Study Abroad	V601	4 years	AAB	34
<b>RUSSIAN</b>				
BA Modern Languages	R900	4 years	ABB	32
BA Comparative Literatures and Cultures and Russian	QR43	4 years	ABB	32
BA English and Russian	QR37	4 years	AAA	36
BA History and Russian	VR17	4 years	AAA	36
BA History of Art and Russian	VR37	4 years	ABB	32
BA Music and Russian	WR37	4 years	AAB	34
BA Philosophy and Russian	RV75	4 years	AAB	34
BA Politics and Russian	RL72	4 years	AAB	34
<b>SOCIAL POLICY</b>				
BSc International Social and Public Policy	L410	3 years	AAB	34
BSc International Social and Public Policy with Study Abroad	L411	4 years	AAB	34
BSc Social Policy	L400	3 years	AAB	34
BSc Social Policy and Politics	LL42	3 years	AAB	34
BSc Social Policy and Sociology	LL43	3 years	AAB	34
BSc Social Policy with Criminology	LM49	3 years	AAB	34

Course	UCAS code	Length	Typical A-level offer	Typical IB offer
BSc Social Policy with Quantitative Research Methods	L402	3 years	AAB	34
BSc Social Policy with Study Abroad	L404	4 years	AAB	34
MSci Social Policy with Innovation	L405	4 years	AAB	34
MSci Social Policy with Quantitative Research Methods	L403	4 years	AAB	34
<b>SOCIOLOGY</b>				
BA Theology and Sociology	VL63	3 years	AAB	34
BSc Politics and Sociology	LL23	3 years	AAB	34
BSc Social Policy and Sociology	LL43	3 years	AAB	34
BSc Sociology	L300	3 years	AAB	34
BSc Sociology and Philosophy	LV35	3 years	AAB	34
BSc Sociology with Quantitative Research Methods	L302	3 years	AAB	34
BSc Sociology with Quantitative Research Methods with Study Abroad	L304	4 years	AAB	34
BSc Sociology with Study Abroad	L301	4 years	AAB	34
MSci Sociology with Quantitative Research Methods	L303	4 years	AAB	34
<b>SPANISH</b>				
BA Modern Languages	R900	4 years	ABB	32
BA Comparative Literatures and Cultures and Spanish	QR39	4 years	ABB	32
BA English and Spanish	QR34	4 years	AAA	36
BA Film and Spanish	L288	4 years	AAB	34
BA History and Spanish	VR14	4 years	AAA	36
BA History of Art and Spanish	VR34	4 years	ABB	32

Course	UCAS code	Length	Typical A-level offer	Typical IB offer
BA International Business Management and Spanish	NR14	4 years	AAA	36
BA Music and Spanish	WR34	4 years	AAB	34
BA Philosophy and Spanish	RV45	4 years	AAB	34
BA Politics and Spanish	RL42	4 years	AAB	34
BA Theatre and Spanish	4D8C	4 years	AAB	34
LLB Law and Spanish	MR13	4 years	A*AA	38
<b>THEATRE</b>				
BA Theatre and English	4CC8	3 years	AAA	36
BA Theatre and Film	4KDU	3 years	AAB	34
BA Theatre and French	W43F	4 years	AAB	34
BA Theatre and German	21C7	4 years	AAB	34
BA Theatre and Italian	22FF	4 years	AAB	34
BA Theatre and Performance Studies	2Q3W	3 years	AAB	34
BA Theatre and Portuguese	R2D8	4 years	AAB	34
BA Theatre and Spanish	4D8C	4 years	AAB	34
MArts Theatre with Innovation	2Q50	4 years	AAB	34
<b>VETERINARY NURSING</b>				
BSc Veterinary Nursing and Companion Animal Behaviour	D313	4 years	BBC	29
<b>VETERINARY SCIENCE</b>				
BVSc Veterinary Science	D100	5 years	AAA	36
BVSc Veterinary Science: Accelerated Graduate Entry	D102	4 years	See online	

\*Subject to approval

\*Entry by transfer

\*\*Direct entry



# POSTGRADUATE TAUGHT PROGRAMMES

Search for a postgraduate taught programme at [bristol.ac.uk/postgraduate](http://bristol.ac.uk/postgraduate)

Programme	Award(s)
<b>FACULTY OF ARTS</b>	
Anthropology	MA
Business Innovation*	MBI
Business Innovation and Entrepreneurship	MSc
Chinese-English Audiovisual Translation	MA
Chinese-English Translation	MA
Comparative Literatures and Cultures	MA
Composition of Music for Film and Television	MA
Creative Innovation and Entrepreneurship	MA
Creative Writing	MA
English Literature	MA
Environmental Humanities*	MA
Film and Television	MA
History	MA
History of Art	MA
Immersive Arts (Virtual and Augmented Reality)	MA, PG Certificate, PG Diploma
Innovation and Entrepreneurship	MSc
Logic and Philosophy of Mathematics	MA
Medieval Studies	MA
Music	MA
Philosophy	MA, PG Diploma
Philosophy and History of Science	MA
Philosophy of Biological and Cognitive Sciences	MA
Philosophy of Physics	MA
Religion	MA

Programme	Award(s)
Social Innovation and Entrepreneurship	MSc
Technology Innovation and Entrepreneurship	MSc
Translation	MA, PG Diploma
<b>FACULTY OF ENGINEERING</b>	
Advanced Composites	MSc
Advanced Microelectronic Systems Engineering	MSc
Aerial Robotics	MSc
Biomedical Engineering	MSc
Biorobotics	MSc
Communication Networks and Signal Processing	MSc
Computer Science (Conversion)	MSc
Cyber Security (Infrastructures Security)	MSc
Data Science	MSc
Data Science (Distance Learning)	MSc
Digital Health	MSc
Earthquake Engineering and Infrastructure Resilience	MSc
Engineering Mathematics	MSc
Engineering with Management	MSc
Financial Technology with Data Science	MSc
Image and Video Communications and Signal Processing	MSc
Immersive Technologies (Virtual and Augmented Reality)	MSc, PG Certificate, PG Diploma
Optical Communications and Signal Processing	MSc
Optoelectronic and Quantum Technologies	MSc
Robotics	MSc
Water and Environmental Management	MSc
Wireless Communications and Signal Processing	MSc
<b>FACULTY OF HEALTH SCIENCES</b>	
Cardiovascular Perfusion (Distance Learning)*	MSc

Programme	Award(s)
Clinical Conscious Sedation and Anxiety Management	PG Certificate
Clinical Oral Surgery	PG Certificate
Dental Implantology	MSc
Epidemiology	MSc
Global Wildlife Health and Conservation	MSc
Health Economics and Health Policy Analysis	MSc
Health Sciences Research	MRes
Healthcare Improvement	PG Certificate
Healthcare Management	MSc, PG Certificate, PG Diploma
Medical Statistics and Health Data Science	MSc
Molecular Neuroscience	MSc
Oral Medicine	MSc
Orthopaedic Research Methods and Evidence-Based Medicine	MSc
Perfusion Science	MSc, PG Certificate
Periodontology	MSc
Public Health	MSc
Reproduction and Development	MSc, PG Certificate, PG Diploma
Stem Cells and Regeneration	MSc, PG Certificate, PG Diploma
Teaching and Learning for Health Professionals	MSc, PG Certificate, PG Diploma
Translational Cardiovascular Medicine	MSc, PG Certificate, PG Diploma
<b>FACULTY OF LIFE SCIENCES</b>	
Applied Neuropsychology	MSc, PG Diploma
Applied Neuropsychology (Distance Learning)	MSc, PG Diploma
Bioinformatics	MSc
Biomedical Sciences Research	MSc
Clinical Neuropsychology	MSc, PG Diploma
Clinical Neuropsychology Practice	PG Certificate
Science Communication for a Better Planet*	MSc
Theoretical and Practical Clinical Neuropsychology	PG Diploma

Programme	Award(s)
<b>FACULTY OF SCIENCE</b>	
Climate Change Science and Policy	MSc
Environmental Modelling and Data Analysis	MSc
Environmental Policy and Management	MSc
Geographic Data Science and Spatial Analytics	MSc
Global Development and Environment	MSc
Mathematical Sciences	MSc
Mathematics of Cybersecurity	MSc
Nanoscience and Functional Nanomaterials	MSc
Nuclear Science and Engineering	MSc
Palaeobiology	MSc
Scientific Computing with Data Science*	MSc
Volcanology	MSc
<b>FACULTY OF SOCIAL SCIENCES AND LAW</b>	
Accounting and Finance	MSc
Accounting, Finance and Management	MSc
Advanced Quantitative Methods	MRes
Banking, Regulation and Financial Stability	MSc
Business Analytics	MBI, MSc
Contemporary Identities	MSc
Development and Security	MSc
East Asian Development and the Global Economy	MSc
Economics	Graduate Diploma, MRes, MSc
Economics and Finance	MSc
Economics, Finance and Management	MSc
Economics with Data Science*	MSc
Education	MRes
Education (Inclusive Education)	MSc
Education (Leadership and Policy)	MSc
Education (Learning, Technology and Society)	MSc
Education (Mathematics Education)	MSc

Programme	Award(s)
Education (Neuroscience and Education)	MSc
Education (Open Pathway)	MSc
Education (Policy and International Development)	MSc
Education (Secondary)	PGCE
Education (Education and Climate Change)*	MSc
Education (Teaching and Learning)	MSc
Finance and Investment	MSc
Financial Technology*	MSc
Gender and International Relations	MSc
Global Management (Distance Learning)*	MSc, PG Certificate, PG Diploma
Global Operations and Supply Chain Management	MSc
Global Political Economy	MRes
Human Geography: Society and Space	MSc
Human Resource Management and the Future of Work	MSc
International Business and Strategy: Global Challenges	MSc
International Development	MSc
International Relations	MSc
International Security	MSc
Law	MA
Law (Banking and Finance Law)	LLM
Law (Commercial Law)	LLM
Law (Company Law and Corporate Governance)	LLM
Law (Employment, Work and Equality)	LLM
Law (General Legal Studies)	LLM
Law (Health, Law and Society)	LLM
Law (Human Rights Law)	LLM
Law (International Commercial Law)	LLM
Law (International Law)	LLM
Law (International Law and International Relations)	LLM
Law (Labour Law and Corporate Governance)	LLM
Law (Law and Globalisation)	LLM

Programme	Award(s)
Law (Public Law)	LLM
Law (Environment, Sustainability and Business)*	LLM
Law (Innovation and Technology)*	LLM
Management	MSc
Management (CSR and Sustainability)	MSc
Management (Digitalisation and Big Data)	MSc
Management (Entrepreneurship and Innovation)	MSc
Management (International Business)	MSc
Management (International Human Resource Management)	MSc
Management (Marketing)	MSc
Management (Project Management)	MSc
Marketing	MSc
Nutrition, Physical Activity and Public Health	MSc
Policy Research	MSc
Psychology of Education BPS	MSc
Public Policy	MSc
Public Policy Analysis (Distance Learning)	MSc
Security, Conflict and Human Rights	MRes
Social and Cultural Theory	MSc
Social Science Research Methods (Management)	MSc
Social Science Research Methods (Politics)	MSc
Social Science Research Methods (Sociology)	MSc
Social Work	MSc
Social Work Research	MSc
Society, Politics and Climate Change	MSc
Socio-Legal Studies	MSc
Sociology	MSc
Strategy, Change and Leadership	MSc, PG Certificate
Teaching English to Speakers of Other Languages (TESOL)	MSc

\*These programmes are subject to approval.

# POSTGRADUATE RESEARCH PROGRAMMES

Search for a postgraduate research programme at [bristol.ac.uk/postgraduate](http://bristol.ac.uk/postgraduate)

Programme	Award(s)
<b>FACULTY OF ARTS</b>	
Anthropology and Archaeology	PhD; MPhil
Business Innovation	DBI
Classics and Ancient History	PhD; MPhil
Comparative Literatures and Cultures	PhD; MPhil
Creative Writing	PhD; MPhil
English Literature	PhD; MPhil
Film and Television	PhD; MPhil
French	PhD; MPhil
German	PhD; MPhil
Hispanic, Portuguese and Latin American Studies	PhD; MPhil
History	PhD; MPhil
History of Art	PhD; MPhil
Innovation and Entrepreneurship	PhD; MPhil
Italian	PhD; MPhil
Medieval Studies	PhD; MPhil
Music	PhD; MPhil; MMus
Philosophy	PhD; MPhil
Religion and Theology	PhD; MPhil
Russian	PhD; MPhil
Theatre and Performance	PhD; MPhil
Translation	PhD; MPhil
<b>FACULTY OF ENGINEERING</b>	
Aerospace Engineering	PhD; MSc by research
Civil Engineering	PhD; MSc by research
Computer Science	PhD; MSc by research
Electrical and Electronic Engineering	PhD; MSc by research
Engineering Mathematics	PhD
Mechanical Engineering	PhD; MSc by research

Programme	Award(s)
<b>FACULTY OF HEALTH SCIENCES</b>	
Oral and Dental Sciences	PhD; MSc by research
Population Health Sciences	PhD; MD; MSc by research
Translational Health Sciences	PhD; MD; DSc; MSc by research
Veterinary Sciences	PhD; MSc by research
<b>FACULTY OF LIFE SCIENCES</b>	
Biochemistry	PhD; MSc by research
Biological Sciences	PhD; MSc by research
Cellular and Molecular Medicine	PhD; MD; MSc by research
Physiology, Pharmacology and Neuroscience	PhD; MSc by research
Psychology	PhD; MSc by research
<b>FACULTY OF SCIENCE</b>	
Chemistry	PhD; MSc by research
Earth Sciences	PhD; MSc by research
Geographical Sciences (Physical Geography)	PhD
Global Environmental Challenges	MSc by research
Mathematics	PhD; MSc by research
Physics	PhD; MSc by research
<b>FACULTY OF SOCIAL SCIENCES AND LAW</b>	
Accounting and Finance	PhD
Advanced Quantitative Methods	PhD
Disability Studies	PhD
East Asian Studies	PhD
Economics	PhD
Education	PhD
Exercise, Nutrition and Health	PhD
Geographical Sciences (Human Geography)	PhD
Global Political Economy	PhD
Health and Wellbeing	PhD
Law	PhD
Management	PhD
Politics	PhD

Programme	Award(s)
Security, Conflict and Human Rights	PhD
Social Policy	PhD
Social Work	PhD
Sociology	PhD
Sustainable Futures	PhD
<b>FUNDED COHORT-BASED DOCTORAL TRAINING</b>	
Advanced Composites	PhD
Aerosol Science	PhD
Composites Manufacture	EngD
Computational Statistics and Data Science: Compass	PhD
Cyber Security (TIPS at Scale)	PhD
Digital Health and Care	PhD
Dynamic Molecular Cell Biology (Wellcome Trust)	PhD
Education: Learning, Leadership and Policy	EdD
Educational Psychology	DEdPsy
Future Innovation in Non-Destructive Evaluation	PhD; EngD
Great Western Four+ Doctoral Training Partnership (NERC)	PhD
Integrative Cardiovascular Science (BHF)	PhD
Interactive Artificial Intelligence	PhD
Molecular, Genetic and Lifecourse Epidemiology (Wellcome Trust)	PhD
Quantum Engineering	PhD
Robotics and Autonomous Systems	PhD
South West Biosciences (SWBio) Doctoral Training Partnership (BBSRC)	PhD
South West Doctoral Training Partnership (ESRC)	PhD
Technology Enhanced Chemical Synthesis (awaiting funding decision)	PhD



### Travel times by train

London: 1 hour 45 minutes  
Bath: 15 minutes  
Cardiff: 55 minutes  
Birmingham: 1 hour 45 minutes  
Manchester: 3 hours 5 minutes



### Travel times by plane

Edinburgh: 1 hour 15 minutes  
Dublin: 1 hour  
Paris: 1 hour 20 minutes  
Madrid: 2 hours 15 minutes  
Rome: 2 hours 35 minutes

# OUR LOCATION

**Bristol has excellent transport links and an international airport. It's easy to explore the UK and further afield by train, bus and plane.**

Average travel times from  
[www.thetrainline.com](http://www.thetrainline.com)  
and [www.skyscanner.net](http://www.skyscanner.net)  
July 2022

If you need all or part of this publication  
in an alternative format, please contact us:

Tel: **+44 (0)117 394 1649**

Email: **[marketing-team@bristol.ac.uk](mailto:marketing-team@bristol.ac.uk)**

This prospectus contains information for students planning to start university in autumn 2023. We have made every effort to ensure all details are correct at the time of going to press (July 2022). However, since this information is subject to change, check the University's website for the latest updates: **[bristol.ac.uk](http://bristol.ac.uk)**

Design: The Chase Creative Consultants

Print: Gemini West






Photography and artwork: Bhagesh Sachania, Bristol Comedy Garden, Chris Bahn, Christy Nunns, Craig Auckland, Dan Rowley, Dan Weill, Destination Bristol, FineTime Photography, Fotohaus, Harry McCulloch, Jenny Hooton, Jim Cossey, Jon Craig, Jon Jerome, Liz Eve, Nick Riddle, Paul Box, Plaster

© University of Bristol 2022



# FIND OUT MORE

[bristol.ac.uk/international-23](http://bristol.ac.uk/international-23)

-  Twitter: @BristolUni
-  Instagram: @UniversityofBristol
-  Weibo: bristol
-  Facebook: @bristoluniversity
-  YouTube: UniversityOfBristol

