



COLLEGE
CONTACT.COM

College Contact GmbH
Hanauer Landstraße 151-153, 60314 Frankfurt am Main
Telefon: 069 - 907 2007 30
E-Mail: beratung@college-contact.com
Web: <https://www.college-contact.com>

POSTGRADUATE PROSPECTUS 2022

BE
FUTURE
MADE



EDINBURGH



SCOTTISH BORDERS



ORKNEY

FutureMade is to look to the future, strive for better, aim for higher, make history. A future that mirrors our pioneering roots in 1821, the year we founded the world's first Mechanics Institute. By choosing to study at Heriot-Watt today you will become part of a community working across boundaries and cultures. Collaborating with international business and industry to tackle the global challenges faced by the world we live in. Heriot-Watt postgraduates are highly employable and sought after by the best organisations worldwide.

Look to the future.

Strive for better.

Aim for higher.

Make history.

Be ambitious.

Be bold.

Be FutureMade



 **GENERATE**



STEP 1:
Download our free app



STEP 3:
Experience the magic of AR



STEP 2:
Aim your device at a trigger image



FUTURE MADE SINCE 1821



For 200 years our education and innovative research has had a profound social impact on a world stage. A pioneer in bringing education to working people, Heriot-Watt was founded as the world's first Mechanics Institute. In 2021, we celebrated our 200th Anniversary and that ethos continues to underpin the industry-informed education that gives our postgraduate students the drive to hit the ground running and be FutureMade in their career of choice.

Our focus across all our campus locations is to play a leading role in the global pandemic recovery. In particular, we are stepping up our industry collaborations and partnerships; focusing our research strengths and 'in-demand' skills in subjects ranging from Data Science, Healthcare Technologies, Cyber Security and Renewable Energy to Artificial Intelligence, Robotics, Logistics, Business Management and Marketing. Our aim is to connect you to people and career opportunities across the world through our international campus locations and our 140,000 alumni in 190 countries.



PROFESSOR RICHARD A. WILLIAMS
OBE, FEng, FRSE, FTSE
Principal and Vice-Chancellor

Contents

FutureMade since 1821	02
Richard A. Williams, Principal's Introduction	
200th Anniversary of Heriot-Watt University	06
Pioneering the UK's race to Net-Zero	08
New Programmes for 2022	10
FutureMade Graduates	16
Made for the World of Work	18
FutureMade through Responsive Blended Learning	24
Heriot-Watt Online	26
Made to Be Different	28
Made Our Mark	30
Made in Edinburgh	32
Edinburgh Business School	36
Made around the World	38
Made for Postgraduate Study	42
Made for Global Impact	48
Global Research Innovation and Discovery: GRID	50
Transforming the Future of Construction:	52
School of Energy, Geoscience, Infrastructure and Society	
Revolutionising Cell Biology:	56
School of Engineering and Physical Sciences	
Pioneering Conversational Artificial Intelligence:	60
School of Mathematical and Computer Sciences	
Innovating Performance Textiles:	64
School of Textiles and Design	
Tackling Gender Inequality:	68
Edinburgh Business School	
Driving Positive Change:	72
Edinburgh Business School	
What can I study at Heriot-Watt?	76
Made to Make an Impact	90
Postgraduate Research Degrees	92
Made to Apply	96
Made Welcome	98
Maps and campus addresses	104



200 YEARS OF HERIOT-WATT UNIVERSITY

Heriot-Watt opened its doors as the world's first Mechanics Institute in 1821 and is the 8th oldest higher education institution in the UK. In 2021 we celebrate our 200th anniversary – a unique milestone, which provides a major opportunity to celebrate all that the University has achieved. We are busy planning a calendar of events to mark this very special occasion. Do keep an eye on our website for further updates.

PROFESSOR RICHARD A. WILLIAMS
OBE, FREng, FRSE, FTSE
Principal and Vice-Chancellor

A GLOBAL COMMUNITY SPIRIT

#OneWatt
#DoWattMatters

2020 will be remembered as a year of unprecedented uncertainty as the world dealt with the COVID-19 pandemic. It will also be remembered as a year that truly demonstrated the global spirit of our communities across the world. From developing a global vaccine delivery mechanism, to making masks and scrubs for healthcare professionals and the NHS, our students, staff and alumni demonstrated an “in this together” attitude to help make a difference in the real world.

SAFEGUARDING TEAM WIN AWARDS FOR COVID-19 EFFORTS

The awards were for Major Incident Management and Contribution to the Higher Education Sector, made by The Higher Education Business Continuity Network. “It’s fantastic that our Safeguarding team have been recognised for their efforts, especially in these extreme times,” said Principal and Vice-Chancellor Richard A. Williams. “The team provide 24/7 support to the whole University community. Their professionalism, excellence of care and sector-leading achievements are underscored by these two prestigious external awards.”

Your FutureMade

Pioneering the UK's race to Net-Zero



Heriot-Watt University took another step forward in its 200 year history as a global pioneer in 2021 through a £20 million UK government project that will see the Industrial Decarbonisation Research and Innovation Centre (IDRIC) be based at the Edinburgh campus. This world-leading, high-impact research and innovation centre will act as the national focal point and international gateway for UK industrial decarbonisation and be at the forefront of the UK's ambitions to cut industrial greenhouse gas emissions.



Meet Professor Mercedes Maroto-Valer, Heriot-Watt's award-winning academic and the UK Research and Innovation (UKRI) Centre's Industrial Decarbonisation Champion. She is driving industrial decarbonisation as part of the UK's journey to net-zero.

The initiative aims to accelerate the cost-effective decarbonisation of industry by developing and deploying low-carbon technologies and enable the deployment of infrastructure at scale by the mid-2020s. It also aims to boost industry sector jobs, reduce carbon emissions and contribute significantly to the UK government's carbon target to reach net-zero by 2050.

It is part of the Industrial Decarbonisation challenge, delivered through the Industrial Strategy Challenge Fund (ISCF) by UKRI, and part of the commitments set out in the Prime Minister's 10 Point Plan for a green revolution. IDRIC will accelerate the transformation of industrial clusters into world leading low-carbon manufacturing hubs which will attract major inward investment, support job creation and underpin the UK's decarbonisation ambitions.

"The 2020s will be crucial for the UK to set the pathway to meet its carbon targets. IDRIC will play a key role to accelerate the decarbonisation of industrial clusters. Working with the research and innovation community, we will demonstrate our international competitiveness to realise the opportunities offered by economies of scale in decarbonising industrial clusters and driving new business models. We will co-develop a whole systems approach that integrates engineering, environmental and technical solutions alongside perspectives on economic, behavioural and policy. Together we will deliver long-lasting growth and societal benefits for a green economic recovery."

For more information:
www.idric.org

NEW FOR 2022

Be the next generation of leaders, innovators and world changers. Our new postgraduate programmes are dedicated to creating graduates who can look to the future, help to recover economies and reshape the world as we know it. Join us as we come together across borders, industries and disciplines to rethink and rebuild a better, greener, more equal world.

Look to the future. Be the change.

We take inspiration from the United Nations Sustainable Development Goals and want our graduates to be advocates of change.

Reimagine the Future

MSc GLOBAL SUSTAINABILITY ENGINEERING

Our MSc Global Sustainability Engineering is a degree 30 years in the making. It builds on the University's extensive experience in the research and teaching of sustainable engineering, which maintains a global focus. A brand-new course on this degree, Carbon Solutions, has been directly informed by the world-leading work carried out by Heriot-Watt University's Research Centre for Carbon Solutions.

"There is a global demand and a very real need for graduates with science or engineering backgrounds who can provide technical consultation and deliver specialist solutions to help improve sustainability and to understand how both incremental and disruptive approaches can be harnessed for effective sustainable development."

DR PHIL RENFORTH,
Research Centre for Carbon Solutions
www.hw.ac.uk/uk/study/postgraduate/global-sustainability-engineering.htm



The programme will provide you with a unique set of skills to address data science challenges in applications ranging from signal and image processing, communications, and robotics, to finance, ecology and complex networks: a sought-after competence in both research and industry.

MSc APPLIED DATA SCIENCE

Data scientists, data engineers and business analysts are among the most sought-after careers in 2021, and Edinburgh specifically is destined to be the 'Data Capital of Europe' by 2025. Studying this programme you will acquire unique interdisciplinary knowledge at the interface between the statistical foundations of data science and associated computational techniques. You will be exposed to specialised data science applications from signal and image processing, communications, and robotics, to finance, ecology and complex networks.

“Our Applied Data Science Master’s programme is perfect for you if you have a degree in mathematics, engineering, physics or equivalent and want to learn about the statistical foundations and computational techniques in data science.”

YVES WIAUX,
Programme Director
<https://www.hw.ac.uk/uk/study/postgraduate/applied-data-science.htm>

“Our MSc Sustainable HRM students will be able to add immediate value to employers seeking to develop sustainable, socially responsible people practices that positively affect people, society and the environment.”

DR LINDA BUCHAN,
Assistant Professor of
Organisational Behaviour
www.hw.ac.uk/uk/study/postgraduate/sustainable-hrm.htm

MSc SUSTAINABLE HRM

Our MSc Sustainable Human Resource Management provides unique insights into this new area of HRM. Sustainable HRM benefits employers and employees, as well as creating wider social benefits including lower unemployment, inclusion for marginalised people, reduced demand for out-of-work and in-work benefits while reducing healthcare burdens due to work-related illness and disability. We recognise the limitations of traditional HRM approaches coupled with rapidly changing trends in employment and offer an exciting selection of specialist courses to educate current and future HR practitioners in a more sustainable and socially responsible form of managing people.

MSc ACCOUNTANCY

Our new MSc Accountancy degree will equip you with the skills and knowledge required to succeed in any career or aspect of business that requires expertise in accounting – in private, public or third sector organisations. We aim to provide you with a route to gain professional qualifications in all of the key accounting associations, and our MSc has been designed with a focus on the Association of Chartered Certified Accountants. We have built-in new courses; Financial Analysis, Ethics and Corporate Governance, Financial Information Systems, and Comparative Financial Reporting, which are integral to this degree that includes six mandatory courses and two elective courses.

“Our MSc Accountancy is designed for anyone looking to gain a career in business in the field of accounting. The degree will allow students a route to gain professional qualifications in a wide range of accounting related fields.”

PROFESSOR RANIA KAMLA
www.hw.ac.uk/uk/study/postgraduate/accountancy-msc.htm

Digital marketing is an exciting and evolving profession that requires individuals who are market minded, customer focused and technologically informed.

MSc DIGITAL MARKETING

Our MSc in Digital Marketing enables you to transition to a digital marketing career by combining an accelerated introduction to marketing with a detailed consideration of digital marketing concepts and techniques. You can customise your degree to match your interests or career pathway by selecting two course options, one each semester. Courses reflect digital marketing skills (social media management, database design, website development) and digital management competencies (strategy, entrepreneurship, consumer psychology, legal aspects, project management). The MSc is accredited by the Chartered Institute of Marketing (CIM) within the Graduate Gateway programmes. This provides graduates with a 'credit for prior learning' upon completion of their degree or the choice of self-study for a CIM qualification during their programme of study. This would require registration of one additional CIM training course to gain a CIM certificate or two additional courses to gain a CIM diploma.



“Our MSc Digital Marketing provides a unique blend of marketing and programming knowledge to meet the needs of modern business.”

DR KATHRYN WAITE,
Associate Professor in Digital Marketing
www.hw.ac.uk/uk/study/postgraduate/digital-marketing.htm



MSc REAL ESTATE

Our MSc Real Estate programme is designed to align your skills to the educational requirements of the industry's professional bodies. Global relevance and employability are at the core of our curriculum design. The programme will enable you to understand the operation of real estate markets and develop a deep understanding of the techniques applied in them. You will gain the key skills necessary to embark on a wide range of careers in the global real estate industry.

“Our well respected, internationally recognised RICS accredited programme is your gateway to a diverse and exciting career in real estate.”

PROFESSOR NEIL A DUNSE,
Programme Director, The Urban Institute
www.hw.ac.uk/pg-realestate

MSc BUSINESS PSYCHOLOGY WITH COACHING

MSc Business Psychology combines our long-established and respected degree in Business Psychology with the applied study of professional coaching. In addition to traditional lectures, seminars and tutorials, students benefit from taking part in supervised practical coaching sessions to build experience and confidence. The degree is accredited by the International Coaching Federation (ICF) and is led by experienced practitioners from the fields of business, psychology, counselling and coaching.

“Coaching psychology is a thriving area of applied psychology which can benefit businesses and organisations of all sizes. This degree will give you the practical skills and knowledge you need to make positive and effective contributions that will help people and organisations flourish.”

DR MIOARA CRISTEA,
Department of Psychology
www.hw.ac.uk/uk/study/postgraduate/business-psychology-with-coaching.htm

FutureMade Graduates

THE CLASS OF 2020

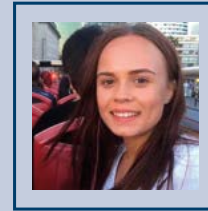
NAVIGATING A NEW REALITY: RESILIENCE

“The next couple of years are going to be about adapting to a new reality. It won’t be the same as it was before. Resilience is key.”

That’s the conclusion of our Associate Professor of Psychology in Edinburgh, Dr Anna Sedda. She believes that thanks to the lessons learned from previous pandemics and using the resilience built in 2020, we can prepare to navigate a “new reality”, which, though hard to imagine, could make us even stronger than before.*

That view is reinforced by some of our Class of 2020 who tell us about their experience of graduating and finding work during the COVID-19 pandemic.

*Read the full story on our
Watt Matters webpage:
www.hw.ac.uk/watt-matters



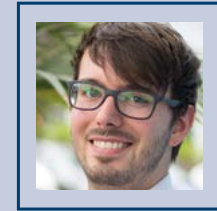
KIRSTEN BATEMAN
Process Engineer, **Babcock**
MEng CHEMICAL ENGINEERING
GRADUATED 2020

“My final year was extremely challenging, not only because of the coursework and exam preparation but because of the outbreak of Covid-19. By the end of the second semester the University was closed and all lectures were online. At this point I had to make the most of online resources and use virtual platforms including Microsoft Teams and Zoom to communicate with lecturers for support and other students to complete any group coursework. It was an extremely difficult time for everyone but coursework deadlines and exam formats were altered to accommodate the pandemic, which definitely made it a lot more manageable. Although challenging, it was still very rewarding and I was delighted when I received my degree certificate.

“During my final year I also had the pressure of applying for graduate jobs. I was very pleased when Babcock offered me a job as a Graduate Process Engineer at the Rosyth site. Since starting, I have worked alongside other process engineers on the Babcock LGE product ecoSMRT, which provides reliquefaction of LNG boil-off gas. I am thrilled to take on this new challenge, meet new people, learn and develop professionally.”

babcock

Babcock is a leading provider of critical, complex engineering services, operating in national defence, emergency services and civil nuclear.



CONNOR CAPLEN
Ground Engineer, **AECOM**
MEng CIVIL ENGINEERING
GRADUATED 2019

“My final year of study was challenging but incredibly rewarding, the professional design project really tested the skills I had learned in the previous four years and left me well prepared for graduating and beginning my career. I also enjoyed the variety of modules on offer, which allowed me to really tailor my workload to suit my career interests.

“Since graduation I have worked for AECOM, based in the Ground Engineering team in the Glasgow office. I’ve worked primarily on roads schemes across the UK helping to design retaining walls, earthwork slopes and bridge foundations while also being involved in numerous ground investigations and spending time out on site overseeing the investigations. Since June 2020 I have been working full-time on the Lower Thames Crossing ground investigation, managing and validating information collected across nearly 1,500 exploratory holes.”

AECOM

AECOM is the world’s premier infrastructure firm partnering with clients to solve the world’s most complex challenges.

Made for the World of Work

Ninety-four percent of postgraduate students are in work or further study 15 months after graduating.

We can help you to enjoy the same success. Employers actively seek out our graduates as our degrees are highly regarded for their relevance to the world of work. Many of our degrees are accredited by professional bodies. We have excellent links with business and industry, both in the UK and internationally. We help you meet some of the world's top employers, who know the strengths our FutureMade graduates bring to the workplace. Each School has a dedicated careers consultant who collaborates with lecturers to integrate a programme of events into our degree programmes, designed to equip you with the skills you will need to plan and implement your career choice.

Each year we normally hold two University-wide recruitment fairs and seven industry-specific recruitment and networking events, giving you the chance to meet with graduate employers and find out about opportunities. Due to COVID-19, these were all successfully delivered online in 2020.

The situation remains under review in light of the COVID-19 pandemic restrictions. Check our website for up-to-date details. www.hw.ac.uk

Our Careers and Graduate Futures Service can help you to identify your options, provide market intelligence, develop your graduate attributes and offer individual career consultation. It can continue to offer support and guidance for up to two years after you graduate.

For further information please contact: www.hw.ac.uk/uk/students/careers.htm

Our Impact

Our degrees are career-focused and relevant to the needs of business and industry.

70
EMPLOYER
EVENTS

9,000
INTERNSHIPS AND
GRADUATE JOBS
ADVERTISED BY
THE CAREERS AND
GRADUATE FUTURES
SERVICE

290
SKILLS WORKSHOPS
DELIVERED

138
IN-CLASS
CAREERS TALKS

Be FutureMade

► www.hw.ac.uk/students/careers/uk/help-options.htm

Your Future**Made** Career

Our links to global business and industry are part of the DNA at Heriot-Watt, which makes our postgraduate students sought after by employers around the world. Your postgraduate education here gives you a unique globally connected perspective and experience, whether that's through specialist guest lectures, industry visits, exhibitions or career events.

You will learn from academics who are leaders in their field, have 'hands-on' industry experience and know exactly what employers are looking for in our postgraduate students.

“As a significant leader in employability, Heriot-Watt produces high-calibre students who are fully equipped for future success. A number of these graduates are currently developing successful careers at Cisco, contributing valuable knowledge and expertise while helping to grow our reputation as a worldwide leader in IT, networking and cybersecurity solutions. Our partnership with Heriot-Watt continues to go from strength to strength and we will continue to recruit from Heriot-Watt's elite pool of talented graduates.”

Tom Kneen
CTO Office, Cisco UKI



Be FutureMade

► www.hw.ac.uk/students/careers/uk/help-options.htm

Made for the World of Work

WHAT OUR EMPLOYERS THINK

“Heriot-Watt reliably produces well-rounded, engaged and commercially aware students who possess the technical skills and financial knowledge we look for in prospective new talent. First Derivatives has built a strong relationship with Heriot-Watt in recent years and we continue to seek out Heriot-Watt students and alumni to join the business through our graduate programme.”

NIAMH GRIBBEN
HR and Graduate Recruitment, First Derivatives (FD)

“Heriot-Watt graduates are of an incredibly high calibre. They are committed to self-development, display a strong academic ability and a positive attitude. I’ve witnessed them approach our application process with passion and confidence, which has been key to their success.”

CLAIRE HUGHES
Talent Attraction Advisor, Ernst & Young LLP



FIRST DERIVATIVES (FD) IS A LEADING PROVIDER OF PRODUCTS AND CONSULTING SERVICES TO SOME OF THE WORLD'S LARGEST FINANCE, TECHNOLOGY AND ENERGY INSTITUTIONS.



ERNST & YOUNG LLP IS A MULTINATIONAL PROFESSIONAL SERVICES NETWORK.

“Heriot-Watt University and its students are important to us and we’ve worked together successfully for a number of years. The quality and diversity of students is high and with a strong focus on building STEM capabilities, there’s a natural affinity with the opportunities at NatWest Group.”

KIRSTEN Z KINLOCH
Early Careers Talent Attraction
Consultant, NatWest



Early Careers

NATWEST IS A MAJOR RETAIL AND COMMERCIAL BANK IN THE UNITED KINGDOM.

“Heriot-Watt graduates are well prepared to make the transition from university into the world of work. They possess both the technical aptitude and motivation that we look for in our future talent. We have successfully collaborated with the University since opening our Glasgow office in 2015 and have hired a large number of their graduates into a variety of technical and business consultancy roles.”

HANNAH DEWAR
University Partnerships Manager Scotland, FDM Group



FDM GROUP IS A GLOBAL LEADER IN THE RECRUITMENT, TRAINING AND DEPLOYMENT SECTOR.

YOUR FUTURE MADE THROUGH RESPONSIVE BLENDED LEARNING

Flexible ways to study is part
of our DNA at Heriot-Watt

**Starting your studies in
either September 2022
or January 2023 is now
an option for many of our
programmes. Check out our
website for more details.**

**As pioneers in flexible and online
learning, we have a range of study
options to suit your lifestyle wherever
you are in the world.**

From full-time, on-campus to online,
together with our new model of
Responsive Blended Learning (RBL), the
choice of how to study can be yours.
However you study you will receive an
inspiring experience – rooted in high
quality provision which is the hallmark
of a Heriot-Watt education.

We have excellent resources for remote
study including the Virtual Learning
Environment (VLE) where you can access
everything you need for your particular
programme. In addition to academic staff
support, we have a dedicated Online
Student Support Team who can guide you

on your academic journey. The University
library, careers team, and all other
services are accessible to you.

CONNECTED WHEREVER YOU ARE

However you access your learning, you
will join a genuinely connected community
of learners and feel part of the University
wherever you are. You can engage with
our global learning community, and your
course colleagues, both in real-time and
at a time that suits you.

RESPONSIVE TO CHANGING CIRCUMSTANCES

Our Responsive Blended Learning (RBL)
model has been introduced to ensure all
new students can begin the academic
year on schedule, wherever you may
be in the world. RBL combines active,
supported online learning with face-to-
face learning opportunities, enabling you
to learn alongside your peers, engage fully
with your programme, and be guided and
supported by your academic course team.
With RBL you'll receive an enhanced
induction, and training to help you learn
online, and a responsive solution to the
learning journey you wish to pursue.

BE FUTURE MADE

A pioneer of
online learning
for over 20 years:
www.hw.ac.uk/online

WATT OUR STUDENTS THINK

Read student reaction to returning to campus
during Semester 1, September, 2020

**“Lecturers and teaching staff are really
dedicated to making the situation work
for everyone. I feel very confident that
RBL will have no negative impact on
my overall learning experience.”**

Returning UG, Edinburgh

**“We all really appreciate the staff for putting
in so much effort. It’s rocky for them too but
I feel we’re doing good and there’s mutual
care and support.”**

Returning UG, Dubai

**“I love that we can learn at our own pace,
and there’s no need to commute, so learning
feels super flexible. Recordings of lectures
from different campuses are very helpful
for solidifying my knowledge too and
much appreciated.”**

Returning UG, Malaysia

BeFutureMade

with

Heriot-Watt Online

**Earn while you learn.
Online programmes designed
to accelerate your career.**

**Our 200 year history shaping tomorrow's
business and industry leaders has also seen
us become a pioneer of online learning.
Our graduates hit the ground running, are
capable of rising to today's global challenges
and navigating disruption.**

ONLINE DEGREES FOR A DIGITAL WORLD

Modern Postgraduate Business degrees - designed for current and future leaders as they rise to the challenges of a fast-paced digital environment.

For organisations to successfully tackle digital transformation, it's vital that today's workforce have the skills and confidence to make the right decisions. To meet these needs, we have an established and growing portfolio of online degree programmes.

NEW PROGRAMMES FOR 2021/2

MSc DIGITAL LEADERSHIP

Addressing the talent needs of the future, the MSc Digital Leadership has been designed to prepare you for leadership roles in digital transformation. It will provide you with a critical appreciation of the transformative potential of digital technologies in business and the opportunities and challenges associated with digital transformation in a variety of organisational contexts.

MSc BUSINESS ANALYTICS AND CONSULTANCY

Built by leading research academics including Honorary Professor Julian Randal, the MSc Business Analytics and Consultancy will prepare you for the fast evolving, increasingly data driven business environment. It will also equip you with the decision-making skills you need to develop and excel as an effective leader and manager of transformational change.

MSc LOGISTICS AND SUPPLY CHAIN MANAGEMENT

Taught by experienced industry professionals, this accredited degree will provide you with a chance to expand, refine and enhance your knowledge in the Logistics and Supply Chain Management subject area including big data business analytics, demand planning and forecasting, supply chain logistics strategy and more.

www.hw.ac.uk/online

FLEXIBLE DEGREES DESIGNED TO FIT AROUND YOUR COMMITMENTS

We know that every student's life demands something different. You could be raising a family, have professional commitments, need to study in your home country – even all three. Whatever your situation, we're committed to making a world-class education accessible, flexible and achievable.

GLOBAL LINKS WITH INDUSTRY

Our degree programmes are career-focused and relevant to the needs of business and industry. Many are accredited by professional bodies and have been developed with the assistance of industry.

ONLINE SUPPORT NETWORK

We'll support you from day one right up to graduation and beyond into your career. That means receiving academic support from tutors via email, phone or Skype and having access to a full range of online resources and course materials taught by industry experts.

Made to Be Different

RESEARCH WITH IMPACT

Our research makes a real difference to people and the world we live in. From tackling climate change, to pushing the boundaries in artificial intelligence and the future of global business logistics, we are leading the way. That's why we are 9th in the UK in the Research Impact rankings.

LEARNING THROUGH DOING

Our approach to learning is informed by our research strengths and aligned to the needs of industry and the professions. Our students get real exposure to the industries they want to work in – through hands-on practical learning in our labs, projects, internships and industry case studies – that's why we are No.1 in Scotland for graduate employability.

A TRULY GLOBAL PERSPECTIVE

Some universities claim to be global, but at Heriot-Watt we have both an international reputation and global campuses that provide opportunities like no other. Our perspective on the world and your future career path is truly global and can take you further than you could imagine.

A SPECIALIST IN THE SUBJECTS THAT MATTER

From science and engineering, to all paths of business, mathematics, computer science and design, we strive for academic excellence and real-world relevance in all our subject areas. We offer degree programmes that are valuable to you, potential future employers and society.

ONE HERIOT-WATT

Across our five academic schools, five global campuses, and our Edinburgh Business School, by choosing Heriot-Watt you will join a community of over 27,000 students and an alumni network of over 140,000, who stand shoulder to shoulder with our faculty of leaders in ideas and solutions.

5

Global campuses

A truly international university with five global campuses, partners in over 100 countries and around 27,000 students studying worldwide.



Our Impact

A world-leading university with strong links to international business and industry, attracting leaders in ideas and solutions tackling real-world challenges.



Our Facilities

We have excellent facilities, highly rated teaching and world-leading research activity, which together provide an exceptional learning and teaching experience. As part of a bright, committed and imaginative community of postgraduates you will have the opportunity to realise your potential by gaining the knowledge and skills you need to achieve your career aspirations.

Made our Mark

We're proud to be rated in the top 270 universities in the world and one of 49 universities in the UK to make it into the top 500. (QS World University Rankings 2022)

Heriot-Watt is valued for excellence in teaching and research. We are ranked 35th in the UK and 8th in Scotland for Overall Satisfaction (2019 UK National Student Survey) and in the top 10 in the UK and first in Scotland for research impact (REF 2014). We aim to find radical innovations and solutions to real-world challenges for the benefit of society.

Global companies actively seek out our graduates as they are FutureMade. That is 'ready-made' for the world, ready to hit the ground running, whatever path they choose. Our programmes are designed to ensure students receive a relevant, career-orientated education. As a result, more than 94% of our postgraduate students are in work or further study fifteen months after completing their programme.

We will bring you into contact with leading researchers who are working on some of the most important areas for twenty-first-century society. Over 80% of academic

staff are currently engaged in research at internationally recognised levels delivering research as diverse as robotics and artificial intelligence, decarbonisation to create a carbon neutral future, to finding solutions to global challenges facing our planet from the deep sub-surface of the earth to the polar regions, in partnership with the British Geological Society. As part of our community you will benefit from an environment focused on making a real and lasting contribution to issues that matter, and discover opportunities to make your own impact.

Our Impact

Heriot-Watt is valued for its pioneering research, informed by the global needs of business and industry.

**no.1 UK
PROVIDER**

of global postgraduate degrees
(HESA 2020)

**top 10
IN THE UK FOR**

Building, Chemical Engineering,
German, Mathematics,
Mechanical Engineering and
Town and Country Planning
(Complete University Guide 2021)


**top 10
IN THE UK FOR**

Building, Chemical Engineering,
Civil Engineering, Electrical and
Electronic Engineering, General
Engineering, Mathematics, Mechanical
Engineering, Physics and Astronomy
and Town and Country Planning.
(Times / Sunday Times Good
University Guide 2021)



**top 10
IN THE UK FOR**

Research Impact
(REF 2014)



Made in Edinburgh

Study in Edinburgh,
voted 1st for student
experience and 3rd
safest city in the world.

YouGov poll

Edinburgh is the most popular
destination in Scotland for
overseas visitors, and the
second most popular in the
UK as a whole.

The City of Edinburgh Council

Edinburgh is the greenest
city in the UK.

First Mile 2019

There are around 2,400 postgraduate students studying at our Edinburgh campus. It's a friendly, welcoming place where we encourage our community to be as integrated as possible, so you will have opportunities to meet with students from a variety of countries and cultures across the globe. As one of Scotland's most international universities you will find around a third of Heriot-Watt students in Edinburgh are from outside the UK.



WANT TO KNOW MORE?

Watch Kayleigh's vlog to see a day in the life of a Heriot-Watt student at the Edinburgh campus:
www.hw.ac.uk/video-kayleigh

2nd
 RANKED 2ND IN THE UK
 AND 15TH IN THE WORLD
QS BEST STUDENT CITIES

A FESTIVAL CITY

Edinburgh is the world's leading festival city with the Edinburgh Festivals attracting 4.5 million visitors each year. Over 25,000 performers take part in 3,000 events across a variety of festivals, including the Edinburgh Festival Fringe, Edinburgh's Hogmanay, Edinburgh International Science Festival, Edinburgh International Festival and the Edinburgh International Film Festival.

YOU'LL NEVER BE BORED

There's a huge range of tourist attractions, from Edinburgh Castle to Edinburgh Zoo. Take to the outdoors to climb Arthur's Seat, visit Portobello beach or stay indoors to tour the fantastic museums and galleries. Explore the hundreds of restaurants, cafes, pubs and clubs, some rooted in history and others chic and contemporary. Go to watch music at a stadium gig or a national sporting event.

INNOVATION

Edinburgh has proudly been the centre of discovery and learning for centuries. Alexander Graham Bell, who was born in Edinburgh in 1847, invented the telephone. Today the city is world-leading in technology, arts, medicine, science, engineering and business.

STUDENT-FRIENDLY

With Edinburgh ranked as 15th in the world and 2nd in the UK in QS Best Student Cities, it's no surprise that students make up 12% of Edinburgh's population.



94%
 OF INTERNATIONAL
 STUDENTS IN SCOTLAND
 THINK IT'S A GOOD
 PLACE TO STUDY
SCOTGOV SURVEY 2019

2nd
 BEST CITY IN THE UK
 FOR STUDENTS
QS BEST STUDENT CITIES

3rd
 SAFEST CITY
 IN THE WORLD
YOUNGOV POLL

39%
 OF STUDENTS ARE
 INTERNATIONAL

Your Future Made at Edinburgh Business School

“When joining our School and Heriot-Watt University, you join a network of industry professionals, top academics and people driven to succeed. We are here to prepare you to enter competitive job markets, excel professionally or even start a new business.”

PROFESSOR HEATHER MCGREGOR
Executive Dean, Edinburgh Business School



Join Scotland's largest Business School: we support over 14,000 students based in more than 150 countries

Our mission is to create tomorrow's leaders for tomorrow's markets and we specialise in industry-focused business degree programmes which embrace a truly international outlook.

Studying with us will kick-start your business career: we've an established reputation for producing high-calibre, career-ready graduates. Our alumni include FTSE100 CEOs, a Prime Minister, and entrepreneurs behind many successful start-up businesses, to name just a few.

Our work with industry ensures your learning will prepare you for the real world. You'll be taught by experienced professionals, and globally-recognised academics, delivering course content that is cutting-edge and up-to-date.

Many of our programmes are delivered across Heriot-Watt's campuses in Edinburgh, Dubai and Malaysia, offering you an exciting opportunity to transfer between our worldwide locations for one semester or more.

The University's student community is highly international, made up from 158 different countries, so you will have many opportunities to meet and learn with people from all over the world. Coupled with our high quality degree programmes, this dynamic, inter-cultural experience will open your mind and expand your learning to ensure your career is FutureMade.



Edinburgh

A festival city with an international outlook

www.hw.ac.uk/edinburgh



Orkney

A 'living laboratory' supporting the global marine industry

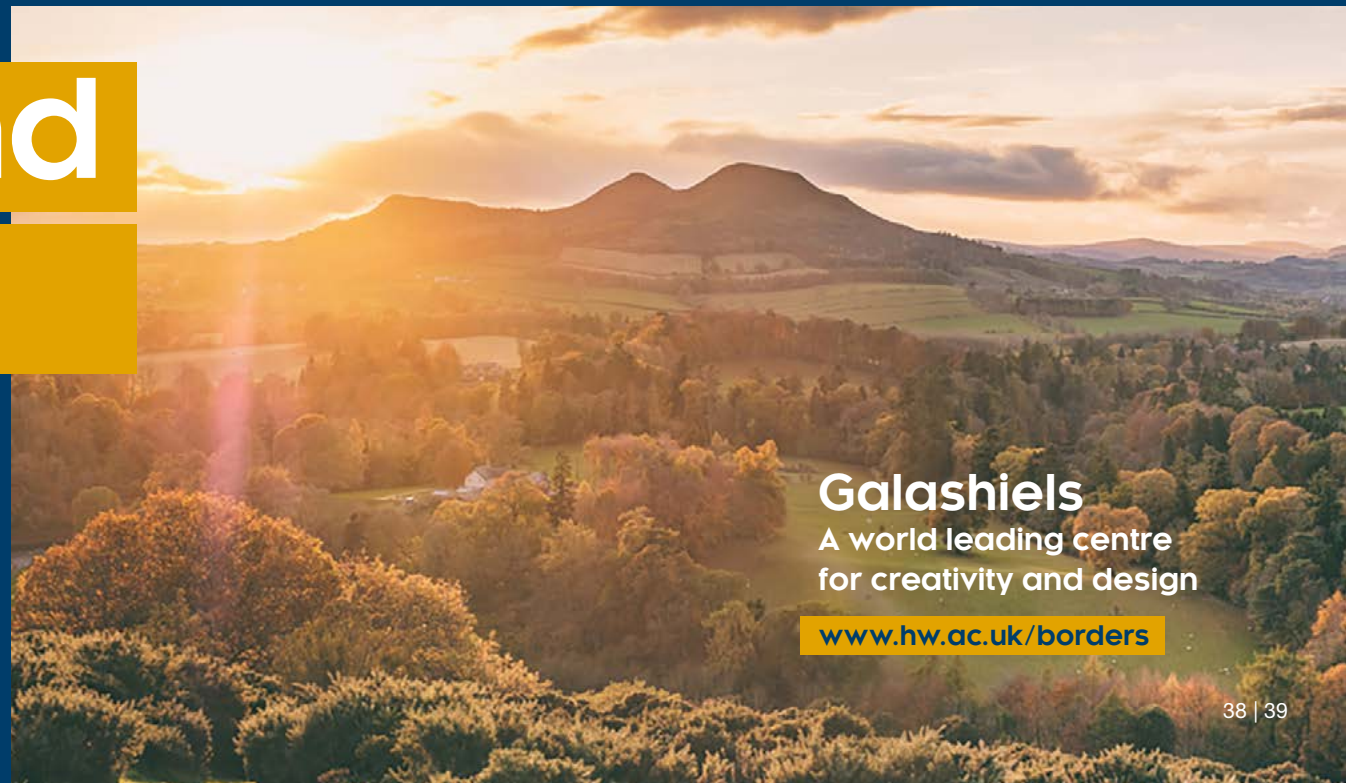
www.hw.ac.uk/orkney

Made around the World

Be FutureMade

► www.hw.ac.uk/virtual-tours

Heriot-Watt University | www.hw.ac.uk/postgraduate



Galashiels

A world leading centre for creativity and design

www.hw.ac.uk/borders



Malaysia

An inspirational place to study

www.hw.ac.uk/malaysia

With our roots in Scotland, our ambition and reach are truly international. A leader in transnational education, wherever we are, Heriot-Watt is a powerful driver and engine of the economy. Together with our alumni, civic community and industry partners, we transform people, society and the world we live in.

Our global campuses are situated in some of the world's most inspiring locations. Each offers superb facilities, safe surroundings and an international welcome. We actively encourage you to push geographical boundaries through our opportunities to study abroad.



Dubai

World-class education
tailored to UAE industry needs

www.hw.ac.uk/dubai





Made for Postgraduate Study

We offer scholarships up to £3,000 to assist with the cost of postgraduate study. Heriot-Watt launched brand new scholarships in 2020, including funding opportunities for all applicants to postgraduate taught Masters programmes at the UK campuses.

We are committed to supporting our students with an attractive and competitive range of scholarships and bursaries.

Each year, hundreds of students enhance their educational experience through a variety of Heriot-Watt and externally funded scholarships, including opportunities funded by the University's generous alumni community, based all over the world.

For further information, eligibility and how to apply

► www.hw.ac.uk/scholarships

For information on scholarships at our Malaysia campus

► www.hw.ac.uk/malaysia-scholarships

For information on scholarships at our Dubai campus

► www.hw.ac.uk/dubai-scholarships

**£1,500 –
£3,000**
POSTGRADUATE
MERIT AWARDS

20%
FEES REDUCTION
for Heriot-Watt
University alumni.

100s
OF STUDENTS
SUPPORTED

100%
FEES SCHOLARSHIPS
available for postgraduate
students.

“Through the Chevening Scholarship I was able to achieve my dream of doing an intensive one-year postgraduate programme in the UK. It is open to ambitious leaders in developing countries all over the world from the Foreign and Commonwealth Office.

Baboucarr Sallah from the Gambia,
MSc International Finance and Economic
Development, School of Social Sciences

Be FutureMade

► www.hw.ac.uk/video-baboucarr-scholarship

UK'S FIRST NATIONAL ROBOTARIUM

“This is an important time in the evolution and application of this most disruptive and ground-breaking of technologies.”

PROFESSOR DAVID LANE
Inaugural Academic Director of the National Robotarium

Heriot-Watt is home to the UK's first National Robotarium, delivering leading-edge research and support for business creation and growth, as well as data skills, new undergraduate and postgraduate programmes, and continuous professional development. The National Robotarium will be the UK's leading innovation hub for the practical application of robotics and autonomous systems to drive economic growth and transform people's lives worldwide.



**The National Robotarium
is a joint partnership with
the University of Edinburgh**

**UK's leading innovation
hub in robotics and
autonomous systems**



**BE
FUTURE
MADE**

Future**Made** in

Robotics and Artificial Intelligence

Yanchao Yu's Story



Yanchao Yu

“Heriot-Watt has an incredible reputation for courses and research related to Robotics/Artificial Intelligence. My PhD research lies in how a robot can interact with real humans in natural language.

Lecturers bring a combination of professional and research expertise into their teaching. I was taught how to think creatively and critically in a research field. I honestly believe the courses and their practical elements have given me an opportunity to help realise my potential and interests for my future career/research direction.”

Be FutureMade

► www.hw.ac.uk/profile-yanchao



Made for Global Impact

Making a difference in the real-world

Founded in 1821 as the world's first Mechanics Institute, Heriot-Watt has a rich heritage and an established reputation as a leading research-led university.

Here we feature some of our leading researchers. They provide an insight into critical challenges they are currently tackling to make a difference in the real-world.

9th / 82%

World-Class Research

The Research Excellence Framework (REF) 2014 ranked Heriot-Watt 9th university in the UK for impact with 82% of research ranked world-class.

80%+

Research-led Education

Over 80% of academic staff are currently engaged in research at internationally recognised levels, delivering research as diverse as robotics and artificial intelligence, decarbonisation to create a carbon neutral future, to finding solutions to global challenges facing our planet from the deep sub-surface of the earth to the polar regions, in partnership with the British Geological Society.



Real-world Education

Today, our communities of scholars come from across the world for a purpose: to deliver innovation and educational excellence in business, engineering, design and the physical, social and life sciences. A research-informed curriculum focuses on delivering practical solutions to real-world problems and creating solutions that have a positive impact on society worldwide.

As a university keenly focused on delivering excellence in research, we have significantly contributed to the development of research pooling.

This initiative can enhance your studies and provide opportunities to meet people who can support your career aspirations. Providing collaborative opportunities for research and training across international universities creates an environment that is highly attractive to leading researchers around the world.

Be FutureMade

► www.hw.ac.uk/research.htm

IMMERSE YOUR CURIOSITY IN THE

The GRID is a new ground-breaking facility to advance our global research, innovation and discovery. It has been designed to create cohesion between academic disciplines, industry partners and the global community, providing an innovative teaching and learning environment for mathematics, engineering, physical sciences and computer science students and staff.

The GRID is designed to excite tomorrow's thinkers and challengers. It's a globally networked space where students can learn, tackle problems and indulge their curiosity and intellectual passions. Create and experiment with ideas that could help to solve real-world challenges. Featuring the very latest in technological innovation, including Augmented Reality, Virtual Reality and Gaming studios, the GRID has the capability to connect with global industry partners and our other university campuses around the world. Open 24/7, it gives you the opportunity to work on real-world problems, working across disciplines to deliver practical solutions with global impact.

The GRID also houses our Enterprise Hub which supports business innovation, showcases emerging technology and inventions, and encourages staff and students to pursue the commercial potential of their creative ideas.

www.hw.ac.uk/grid

GRID

"Digital and data-driven technologies continue to revolutionise business and industry. Through the GRID at Heriot-Watt we are bringing together our expertise in business, engineering and technology to develop talent, research and innovation, creating a place where students and researchers can collaborate with start-ups and corporate organisations to shape tomorrow's industry."

DAVID RICHARDSON
Chief Entrepreneurial Executive,
Heriot-Watt University

We don't just look to the future. We help build it.

Meet Professor Gabriela Medero. Gabi is part of the Institute for Infrastructure and Environment in the School of Energy, Geoscience, Infrastructure and Society. Here, she talks about her ground-breaking research and invention of the *K-Briq*, a sustainable building brick made almost entirely of construction waste, producing less than a tenth of CO₂ emissions in comparison to fired clay bricks.



“

We are transforming the future of construction through the development of sustainable building products made from recycled materials that can be re-used and recycled, thus reducing carbon emissions through more sustainable manufacturing processes. The work aligns with the government's targets of Net Zero.

Q What is your research focused on?

A My multi-disciplinary research develops innovative and sustainable building materials that have a circular approach to construction. We have used construction demolition waste as a main feedstock for the creation of a new building material, the *K-Briq*. The combination of its manufacturing process and recycled content offer a lower carbon footprint than bricks historically created from fired clay, so there are also environmental benefits.

Q How is that work influencing tomorrow's world?

A The work aligns with the government's targets of *Net Zero*. As a construction industry we historically produced a lot of waste, with a high carbon footprint due to energy demanded in its manufacturing processes. In the past, we have been exploiting raw materials that end up as landfill waste. Here, we answer the questions of resource efficiency because this is a valuable material that can be recycled and re-used and helps to reduce carbon emissions, thus benefitting the environment.

Q How has working with industry made an impact on your work?

A It has been essential to direct and drive our research. We are providing solutions to issues that are coming from industry and we also need to think about the legislation that will be in place in the future. Working with industry, therefore, has been key to help shape the work that we do.

Q What do you think gives Heriot-Watt postgraduates that extra edge in their chosen field of expertise?

A Doing top research in so many globally-relevant topics that industry and governments are interested in - and that communities need - is world-leading. It puts our graduates in a really strong position to respond to and make an impact in the real-world.

Be FutureMade

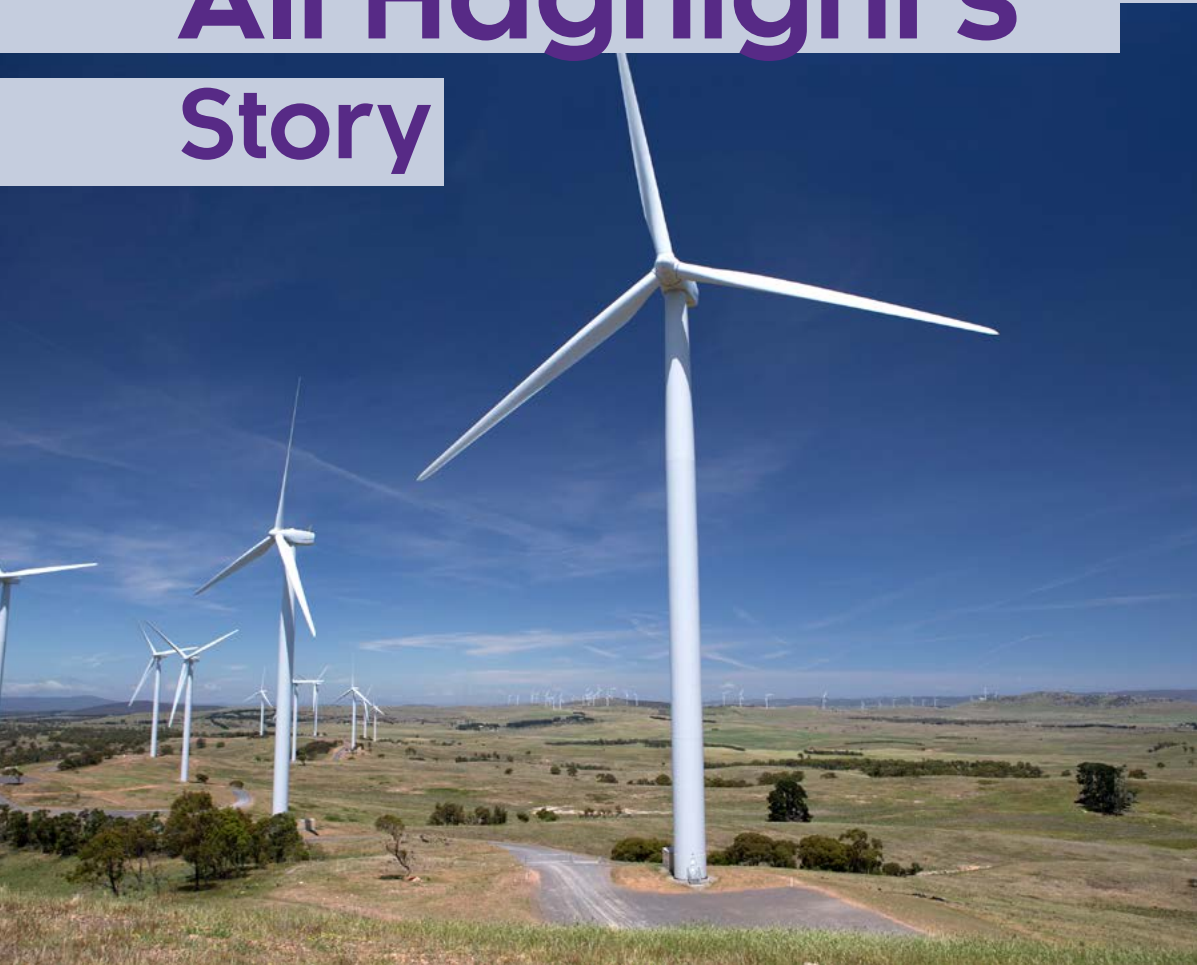
Discover more
about the School of
Energy, Geoscience,
Infrastructure and
Society

► www.hw.ac.uk/egis

Future**Made** in

Civil/Safety/Structural/Water Engineering

Ali Haghghi's Story



Ali Haghghi

Ali completed his PhD in Geotechnical Engineering with Gabi at Heriot-Watt in the area of Civil/Safety/Structural/Water Engineering. He cites his supervisors as having a big role in his current success. With their advice and support, he managed to start his career in the energy sector. Ali now works for Avangrid Renewables/Iberdrola as a lead Geotechnical Engineer and Foundation Design Manager for offshore wind projects in the USA.

Be FutureMade

► www.hw.ac.uk/profile-ali

Spearheading a revolution in cell biology

Meet Professor Rory Duncan.
He's a cell biologist who is
passionate about working across
traditional scientific boundaries.
He researches the fundamental
things that go wrong in diabetes
and in neurological diseases,
using microscopy. Recent
breakthroughs in this field
means that it's now possible
to see things inside cells, as
small to us as Jupiter is large.



“

My team thrive on working across a range of disciplines, with biologists, chemists, mathematicians, engineers, physicists, clinicians, and even artists. Together, we have formed a truly world-leading force, developing new microscopy techniques with ever-greater power, and novel analysis approaches that can track 100,000s of single molecules on the astronomically small scale inside living cells.

Q How is your work today
influencing tomorrow's world?

A Our Life Science Interface
Laboratory is recognised worldwide
as a centre of excellence in the
imaging of molecular events in cells.
The Edinburgh Super Resolution
Imaging Consortium (ESRIC) is a
unique resource that's unparalleled
in the UK, which we run in
partnership with the University of
Edinburgh's Institute of Genetics
and Molecular Medicine (IGMM).
ESRIC is equipped with a range
of highly advanced microscopes
capable of nanometre-resolution
imaging in living cells, enabling us
to at last visualise not only single
proteins but also hundreds of
thousands of proteins in the cell.

Q What gives Heriot-Watt
postgraduate students the edge?

A All of the research that we do
here is very high-profile and it
attracts the interest of a great many
scientists globally. It's an extremely
vibrant place to be. We are uniquely
placed with the fantastic resources
and expertise profile that ESRIC
offers. Postgraduates on our team
are equipped with a broad-based
expertise that will allow them to
work anywhere in the world in this
area of research. Our students
all attend a summer school that
attracts delegates from all over
the world to learn from the best
international researchers in the
field including Nobel Prize-winners
to pass on their expertise to lucky
students!

Be FutureMade

**Watch Rory's video
interview**

► [www.hw.ac.uk/
video-rory-duncan](http://www.hw.ac.uk/video-rory-duncan)

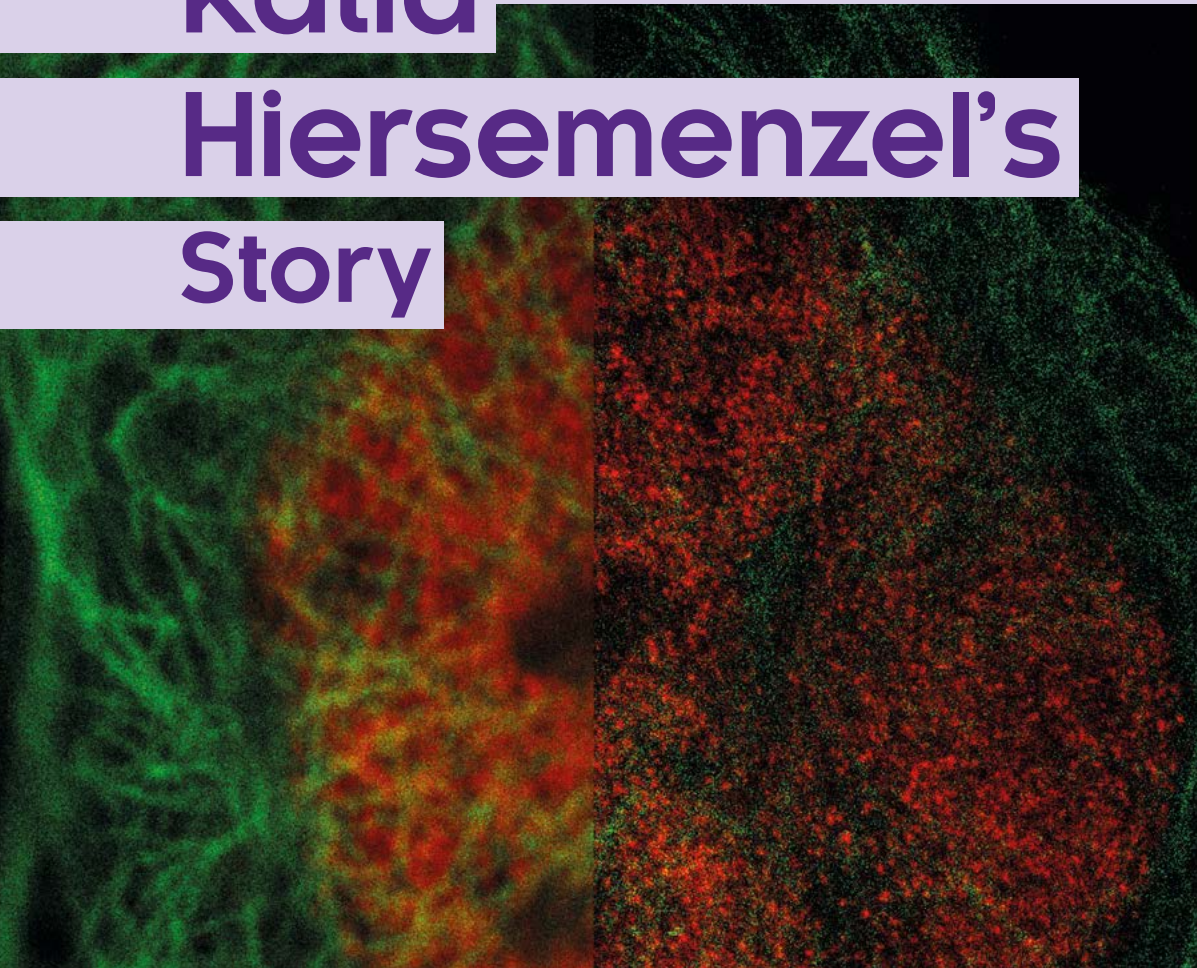
**Discover more about the
School of Engineering and
Physical Sciences**

► www.hw.ac.uk/eps

Future**Made** in

Advanced Eye Research

Katia Hiersemenzel's Story



Dr Katia Hiersemenzel

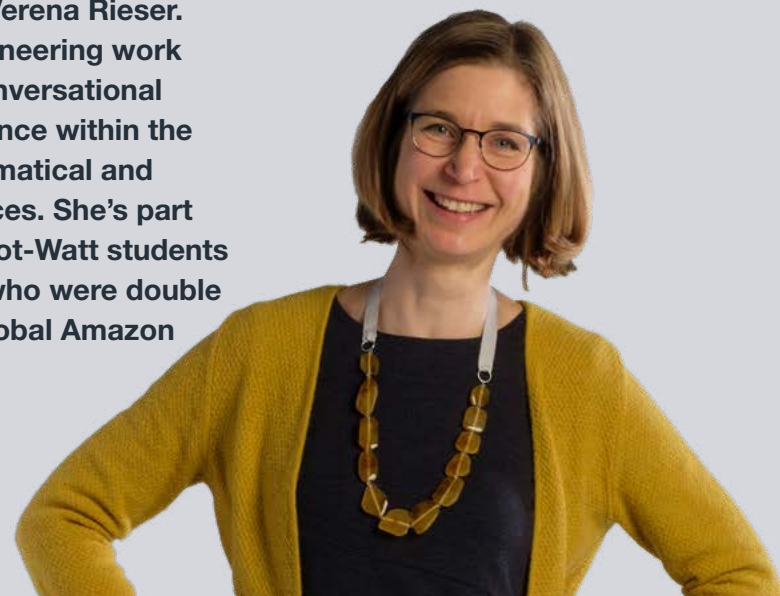
Dr Katia Hiersemenzel studied with Rory Duncan at Heriot-Watt. Today, she is an Advanced Imaging Application Specialist for Leica Microsystems Global for Europe, the Middle East and Africa. Her role is part of the company's Optical Coherence Tomography (OCT) system, a recently established part of the product range of Leica Microsystems. OCT is the optical analogue of ultrasound and has a particular application to eye research. As an Application Specialist for the life science sector she provides the technical knowhow about the product and its bio-imaging capacity.

Be FutureMade

► www.hw.ac.uk/profile-katia

Who said conversations had to be with humans

Meet Professor Verena Rieser. She's leading pioneering work in the field of Conversational Artificial Intelligence within the School of Mathematical and Computer Sciences. She's part of a team of Heriot-Watt students and academics who were double finalists at the global Amazon Alexa Challenge.



“

The research we do here informs our teaching and gives our students the opportunity to be at the forefront of pioneering initiatives for the benefit of industry and wider society. Heriot-Watt has a long-standing global reputation in Conversational AI and Human-Robot Interaction.

Q What is your research focused on?

A My research aims to create Conversational Artificial Intelligence (AI). That is, we are looking to design intelligent agents, which can converse coherently and engagingly over a wide variety of topics. This is often considered to be ‘the holy grail’ of AI.

Q How is that work influencing tomorrow's world?

A Conversational systems aim to provide a user-friendly interface to complex systems, processes and distributed information. A prime example thereof is human-robot interaction, where users can collaborate with a complex autonomous system by using natural means, such as voice and gestures. For the same reasons, smart speakers, such as Amazon Alexa and Google Home, have become increasingly popular. For example, it is estimated that 24% of adults in the US own and regularly use smart speakers (NPR). As such, I believe that conversational AI will become ubiquitous in tomorrow's world and our work at Heriot-Watt University has a significant impact towards this goal.

Q Tell us a bit about the Amazon Alexa Challenge?

A Heriot-Watt University was recognised as one of the world's best universities worldwide for Conversational AI in the prestigious Amazon Alexa Challenge. The Amazon Alexa Prize is an annual university competition dedicated to advancing conversational AI. It is named after the Alexa voice system that powers the Amazon Echo. In the 2017 and 2018 inaugural competitions, our student team representing Heriot-Watt was the only UK university to reach the final three, having previously fended off more than 100 entries from 22 countries, including the likes of Harvard and Princeton.

Q What advice would you have for potential students looking to work in the field of Artificial Intelligence?

A For me, one of the main attractions of working in AI is the multitude of methods you get to use. It is a highly multidisciplinary field where you will acquire expertise in many different areas, such as statistics and machine learning, natural language processing, software engineering and data science, as well as psychological aspects and experimental design.

Be FutureMade

Discover more about the School of Mathematical and Computer Sciences

► www.hw.ac.uk/macs



Future**Made** in
Artificial Intelligence

Amanda Curry's Story

Amanda Curry was part of a group of Heriot-Watt Computer Science PhD students who reached the top three finalists in the Amazon Alexa Challenge, a global competition for university students dedicated to accelerating the field of conversational AI. Alexa is the voice that powers Amazon Echo. Heriot-Watt was the only UK university to reach the final.



Amanda Curry

“It was a really great experience and an opportunity to see our research applied in a real-world setting supported by Amazon. We developed a conversational system able to compete with systems from other top universities. Our system was one of the three finalists that got to compete in Las Vegas for a grand prize of \$500,000.”

Be Future**Made**

► www.hw.ac.uk/profile-amanda

The future of fabric design is woven into our DNA

Meet Dr Lisa MacIntyre in the School of Textiles and Design. She tells us about her research in the field of developing medical compression devices for the global healthcare industry.



“

The facilities at the Borders Campus are amazing with tutors who are very accessible and knowledgeable. They widen your horizon to possible researchable subjects. At the end of the programme, you are ready and confident to pursue your personal goals and vision.

Q What is your research focused on?

A Most of my work to date has been in the development and evaluation of medical compression devices. I am also very interested in sustainability and how textile technology can improve sustainable practice in the fashion industry.

Q How is that work influencing tomorrow's world?

A My medical compression findings, and Pressure Garment Design Tools, are used by international pressure garment companies to improve the treatment that they offer to patients and to make their production more efficient.

Q How has working with industry made an impact on your work?

A It has driven me to apply theoretical understanding to real-world situations. It forces us to think about what is really needed and to make it accessible to the widest range of users possible.

Q What do you think gives Heriot-Watt postgraduates that extra edge in their chosen field of expertise?

A They gain a deep technical understanding of their chosen discipline and an ability to apply their knowledge flexibly to solve real-world problems.

Q What advice would you give to a PG student considering Heriot-Watt?

A Identify the knowledge, understanding and experience that you need in order to succeed in your chosen career path. In particular, consider your own unique selling points and what will make you, and your CV, stand out from the crowd when you apply for jobs. You should also consider the type of learning environment and support you will need in order to thrive and achieve your goals.

Be FutureMade

Discover more about the School of Textiles and Design

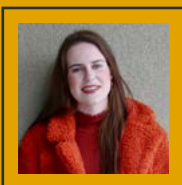
► www.tex.hw.ac.uk

Future**Made** in

Digital Design and Innovation

Kelci Hilferty's Story

Kelci studied Business at undergraduate level, specialising in Marketing and Finance. She focused on understanding the customer and helping businesses generate revenue. After taking some marketing classes she gained a passion for graphic design which led her to undertake a Design-related Masters.



Kelci Hilferty

“The Digital Design and Innovation programme was definitely the right decision for me and I would highly recommend it. Having typecast myself as a business professional, the programme pushed me outside my comfort zone, allowing me to explore avenues such as digital place making and the design and creation of websites and apps, whilst helping me build a professional network.”

Be Future**Made**

► www.hw.ac.uk/profile-kelci

Tackling Gender Inequality in the workplace

Meet Professor Kate Sang. Kate leads research into Gender and Employment Studies within the Edinburgh Business School, working with industry, the public sector and policy makers to develop real-world solutions towards making the workplace fully inclusive.



“

My research is influencing tomorrow's world through working with employers to develop interventions to improve the working lives of disabled employees, through new policies, representation and working with trade unions. I have also worked with the Scottish Parliament on disability, women's health and poverty issues.

Q What is your research focused on?

A It explores the persistence of gender inequalities in the workplace, revealing how gender intersects with disability, ethnicity and migratory status. I am particularly interested in male-dominated sectors such as the construction industry, transport and academia.

Q How is that work influencing tomorrow's world?

A By working with employers to develop interventions to improve the working lives of disabled employees, through new policies, representation and working with trade unions. I have also worked with the Scottish Parliament on disability, women's health and poverty issues. The aim of my research is to work with policy makers, employers and trade unions to create workplaces where all employees are able to reach their full potential.

Q How has working with industry made an impact on your work?

A I work with industry, the public sector and policy makers to develop understanding of the lived experiences of employees so I can develop real-world solutions to ensure a fully inclusive workplace.

Q What do you think gives Heriot-Watt postgraduates that extra edge?

A The opportunity to study and work with global leaders in their field, so students enter the workplace with cutting-edge knowledge rooted in a strong evidence base.

Q What advice would you give to a postgraduate student considering Heriot-Watt?

A Your lecturers are here to help and we are excited about working with you – so always ask if you need any help or advice. Also make use of the variety of resources including the library – the more reading you do, the stronger your own work will be.

Be FutureMade

Discover more about the Edinburgh Business School

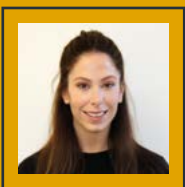
► www.hw.ac.uk/ebs

Future**Made** in

International Business Management

Rebecca Stirzaker's Story

Rebecca Stirzaker graduated with an MSc in International Business Management with HRM from the Edinburgh Business School. Rebecca is now an Associate Professor in the Department of Business, Strategy and Political Sciences at the University of South-Eastern Norway.



Rebecca Stirzaker

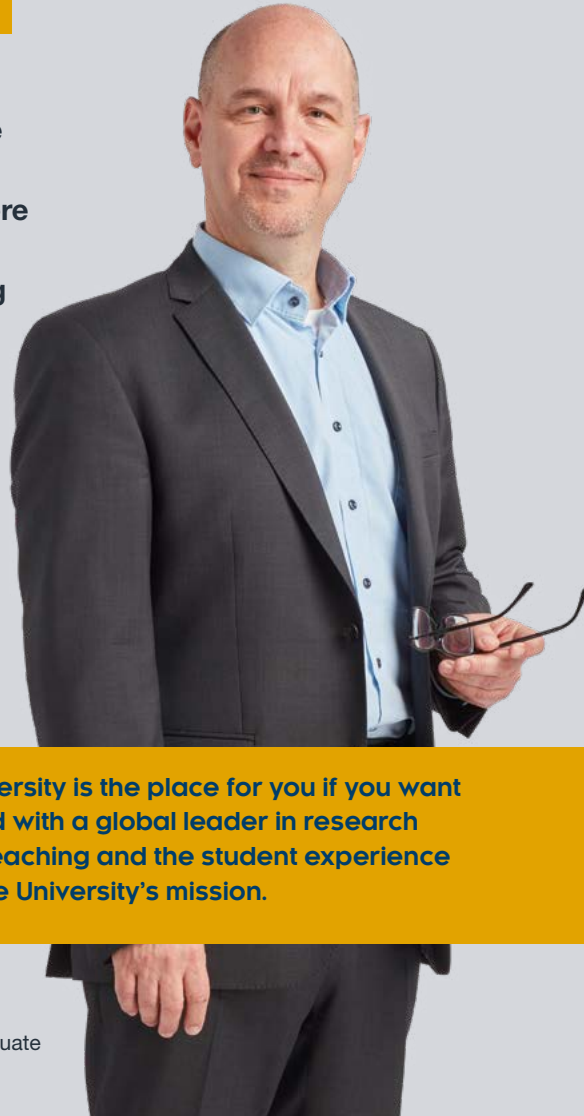
“At Heriot-Watt, you have the opportunity to enjoy a truly international experience with the University ranked in the world’s top 10 for the international mix of students. Teaching is provided by world-class academic professionals and dedicated support staff provide excellent care. Overall, if you are looking for a world-class international postgraduate student experience, Heriot-Watt should be your choice.”

Be FutureMade

► www.hw.ac.uk/profile-rebecca

Think you can do better? So do we

Meet Dr Dimitris Christopoulos. Dimitris is Director of the Centre for Networks and Enterprise at Edinburgh Business School, where our students have one thing in common - the drive to make long lasting positive change through studying high-quality, accessible postgraduate programmes in business. Here he tells us about his research work on exceptional agents and their effect on socio-economic systems in the workplace.



“

Heriot-Watt University is the place for you if you want to be associated with a global leader in research impact, where teaching and the student experience are central to the University's mission.

Q What is your research focused on?

A I focus on exceptional agents, such as leaders, entrepreneurs, brokers and their effect on socio-economic systems. I employ tools associated with network science and in my role as Director of the Centre for Networks and Enterprise (CNE) I support a number of varied projects on topics that include: careers advancement, the social economy, fisheries resilience, deforestation and sustainability, political risk, venture capital syndication and corporate governance.

Q How is that work influencing tomorrow's world?

A My colleagues and I at CNE are part of an effort to understand the implications of interconnectedness in human action. Insights from this work directly impact the way we understand teams, organisations and systems. We now recognise that ability to comprehend the network dimension in social systems can improve the effectiveness of organisations and teams, as well as the robustness and resilience of their governance.

Q How has working with industry made an impact on your work?

A Our current industry funded projects ensure we are fully aware of the issues directly affecting industry, and allow us to apply our expertise towards resolving them.

Q What do you think gives Heriot-Watt postgraduates that extra edge?

A As alumni of a global University, our graduates are well prepared to tackle the international job market and understand the challenges of an interconnected world.

Q What advice would you give to a postgraduate student considering Heriot-Watt?

A Heriot-Watt University is the place for you if you want to be associated with a global leader in research impact, where teaching and the student experience are central to the University's mission.

Be FutureMade

**Discover more about
Edinburgh Business
School**

► www.hw.ac.uk/ebs

Future**Made** in
Business Management

John Bianchin's Story

John Bianchin from Canada studied for his MBA online with Edinburgh Business School. The MBA has given John confidence to manage and provide vision for his team, while developing strong leadership and direction in his non-profit work.



John Bianchin

“I’m currently president of the John Howard Society of Toronto, a non-profit organisation, dedicated to developing programmes that reduce the social, economic and personal costs of crime. The Society is committed to helping people who have been in conflict with the law, and those at imminent risk, through service, education and community programmes. In my work for the non-profit organisation, my MBA helped me drive the strategic planning process which enabled our management team to efficiently develop the organisation. I hope my career will develop into a global role and provide me with additional organisational development and leadership challenges. To that end I have already started my doctoral studies with Edinburgh Business School.”

Be FutureMade****

► www.hw.ac.uk/ebs

Study

at

Heriot-Watt

FutureMade

All of our taught programmes and research degrees are grouped into subject tables on the following pages with an indication of the level of award.

To get more detailed information on the structure of our programmes including course content, entry requirements, modes of delivery (full-time/part-time/online independent distance learning), fees and funding please go to our website.

Please note there are options to begin your programme in September or January. See our website for the most up-to date information.

► www.hw.ac.uk/pg



Please note our Programme Portfolio is currently under review and some of the programmes listed in this prospectus may change. Please refer to our website for up to date information on the subject area you are interested in.

Energy, Geoscience, Infrastructure and Society

Building, Planning and Urban Design

www.hw.ac.uk/pg-building

Programme	Level	Award
T Facilities Management (Dubai Campus)	Taught	MSc/Diploma
T Urban Strategies and Design (Joint programme with the University of Edinburgh)	Taught	MSc/Diploma
O/L Building Services Engineering (Online Learning)	Online	MSc/Diploma
T Spatial Planning and Real Estate Development (Also by Online Learning)	Taught/ Online	MSc/Diploma
R Acoustics and Noise Control	Research	PhD/MPhil/MSc
R Age-Friendly Cities and Communities	Research	PhD/MPhil/MSc
R Construction Management and Innovation	Research	PhD/MPhil/MSc
R Eco-Housing	Research	PhD/MPhil/MSc
R Health and Wellbeing in the Built Environment	Research	PhD/MPhil/MSc
R Housing Policy and Strategies	Research	PhD/MPhil/MSc
R Sustainability and Carbon Management	Research	PhD/MPhil/MSc
R Sustainable Materials	Research	PhD/MPhil/MSc
R Sustainable Transport	Research	PhD/MPhil/MSc
R Urban Design and Planning	Research	PhD/MPhil/MSc
R Urban Energy	Research	PhD/MPhil/MSc
R Water Conservation and Drainage	Research	PhD/MPhil/MSc

Programmes you may also be interested in:

- Real Estate (Online Learning and in Dubai - see page 81)

Civil/Safety/Structural/Water Engineering

www.hw.ac.uk/pg-civil

Programme	Level	Award
T Civil Engineering and Construction Management (Also by Online Learning and in Dubai)	Taught/ Online	MSc/Diploma
T Civil Engineering with Industry Placement (Two years)	Taught	MSc
T Advanced Structural Engineering (Also by Online Learning)	Taught/ Online	MSc/Diploma
O/L Safety and Risk Management (By Online Learning only)	Online	MSc/Diploma
O/L Safety, Risk and Reliability Engineering (By Online Learning only)	Online	MSc/Diploma
R Civil Engineering Materials	Research	PhD/MPhil/MSc
R Geomechanics	Research	PhD/MPhil/MSc
R High-Speed Railways	Research	PhD/MPhil/MSc

R Structures	Research	PhD/MPhil/MSc
R Systems, Sustainability and Society	Research	PhD/MPhil/MSc
R Water Conservation and Drainage	Research	PhD/MPhil/MSc
R Water Management	Research	PhD/MPhil/MSc

Programmes you may also be interested in:

- Petroleum Engineering MSc (see page 80)
- Global Sustainability Engineering (see page 83)

Construction Management and Surveying

www.hw.ac.uk/pg-construction

Programme	Level	Award
T Commercial Management and Quantity Surveying (Also by Online Learning and in Dubai/Malaysia)	Taught/ Online	MSc/Diploma
T Commercial Management and Quantity Surveying with Industry Placement (Two years)	Taught	MSc
T Construction Project Management (Also by Online Learning and in Dubai/Malaysia)	Taught/ Online	MSc/Diploma
T Construction Project Management with Industry Placement (Two years)	Taught	MSc

Energy and Renewables

www.hw.ac.uk/pg-energy

Programme	Level	Award
T Renewable Energy Development (Orkney Campus and by Online Learning)	Taught/ Online	MSc/Diploma

Programmes you may also be interested in (see page 82):









- Energy MSc/Diploma
- Renewable Energy Engineering MSc/Diploma

Life, Earth and Biological Sciences

www.hw.ac.uk/pg-lifeandearthsciences

Programme	Level	Award
R Biogeochemistry	Research	PhD/MPhil/MSc
R Biotechnology	Research	PhD/MPhil/MSc
R Climate Change	Research	PhD/MPhil/MSc
R Geosciences	Research	PhD/MPhil/MSc
R Life Sciences (Human and Environmental Health)	Research	PhD/MPhil/MSc
R Microbiology and Bioremediation	Research	PhD/MPhil/MSc
R Physical Geography	Research	PhD/MPhil/MSc
R Plant Sciences	Research	PhD/MPhil/MSc
R Sustainable Energy	Research	PhD/MPhil/MSc

Marine, Environment and Climate Change www.hw.ac.uk/pg-marine

Programme	Level	Award
 Climate Change: Managing the Marine Environment	Taught	MSc/Diploma
 International Marine Science  (Also by Online Learning and at Orkney Campus)	Taught/ Online	MSc/Diploma
 Marine Renewable Energy  (Orkney Campus and by Online Learning)	Taught/ Online	MSc/Diploma
 Abandonment of Offshore Installations	Research	PhD/MPhil/MSc
 Coral Ecosystems	Research	PhD/MPhil/MSc
 Coastal Zone Management	Research	PhD/MPhil/MSc
 Ecotoxicology and Immunology	Research	PhD/MPhil/MSc
 Energy Transition and Planning	Research	PhD/MPhil/MSc
 Environmental Sciences	Research	PhD/MPhil/MSc
 IT Applications in Peripheral Areas	Research	PhD/MPhil/MSc
 Marine Conservation	Research	PhD/MPhil/MSc
 Marine Vertebrates	Research	PhD/MPhil/MSc
 Marine Microbial Ecology	Research	PhD/MPhil/MSc
 Marine Biodiversity	Research	PhD/MPhil/MSc
 Marine Biotechnology	Research	PhD/MPhil/MSc
 Seabed Mapping	Research	PhD/MPhil/MSc
 Tidal Current Energy Generation	Research	PhD/MPhil/MSc







Programmes you may also be interested in:

- Renewable Energy Development MSc/Diploma (see page 79)

Petroleum Engineering and Geoscience

www.hw.ac.uk/pg-petroleum
www.hw.ac.uk/pg-geoscience

Programme	Level	Award
 Applied Petroleum Geoscience  (Also by Online Learning)	Taught/ Online	MSc
 Mature Field Management  (Also by Online Learning)	Taught/ Online	MSc
 Petroleum Engineering  (Also by Online Learning and in Dubai /Malaysia)	Taught/ Online	MSc
 Reservoir Evaluation and Management	Taught	MSc
 Subsurface Energy Systems	Taught	MSc
 Applied Geoscience	Research	PhD/MPhil/MSc
 Carbon Capture and Storage (CCS)	Research	PhD/MPhil/MSc
 Carbonate Reservoirs	Research	PhD/MPhil/MSc
 Enhanced Oil Recovery and CO ₂ Solutions	Research	PhD/MPhil/MSc
 Estuary and Coastal Geosciences	Research	PhD/MPhil/MSc
 Flow Assurance and Scale Team (FAST)	Research	PhD/MPhil/MSc

 Geomaterials	Research	PhD/MPhil/MSc
 Hydrates and PVT	Research	PhD/MPhil/MSc
 Oilfield Chemistry	Research	PhD/MPhil/MSc
 Pore-Scale Modelling	Research	PhD/MPhil/MSc
 Production Engineering and Technology	Research	PhD/MPhil/MSc
 Reservoir Geophysics	Research	PhD/MPhil/MSc
 Uncertainty Quantification	Research	PhD/MPhil/MSc

You may also be interested in:

- Safety, Risk and Reliability Engineering MSc/Diploma (By Online Learning) (see page 78)

Real Estate, Housing and Social Policy www.hw.ac.uk/pg-realestate

Programme	Level	Award
 Real Estate  (Also by Online Learning)	Taught/ Online	MSc/Diploma
 Real Estate Investment and Finance (Dubai Campus)	Taught	MSc/Diploma
 Real Estate Management and Development (Dubai Campus)	Taught	MSc/Diploma
 Affordability, Housing Markets and Private Renting	Research	PhD/MPhil/MSc
 Commercial Property Markets	Research	PhD/MPhil/MSc
 Comparative Housing and Urban Research	Research	PhD/MPhil/MSc
 Diversity/Black and Minority Ethnic Communities	Research	PhD/MPhil/MSc
 Homelessness and Social Exclusion	Research	PhD/MPhil/MSc
 Housing Design, Development and Regeneration	Research	PhD/MPhil/MSc
 Housing Policy, Housing Management and Governance	Research	PhD/MPhil/MSc
 Migration and Place	Research	PhD/MPhil/MSc
 Neighbourhoods and Deprivation	Research	PhD/MPhil/MSc

Programmes you may also be interested in (see page 78):

- Spatial Planning and Real Estate Development (Also by Online Learning)
- Urban Strategies and Design MSc/Diploma

Engineering and Physical Sciences

Biological Chemistry, Biophysics and Bioengineering

www.hw.ac.uk/pg-biological-chemistry

Programme	Level	Award
R Institute of Biological Chemistry, Biophysics and Bioengineering	Research	PhD/MPhil/MSc

Brewing and Distilling

www.hw.ac.uk/pg-brewing

Programme	Level	Award
T Brewing and Distilling (Also by Online Learning)	Taught/Online	MSc/Diploma
T Brewing and Distilling with Entrepreneurship	Taught	MSc
R International Centre for Brewing and Distilling (ICBD)	Research	PhD/MPhil/MSc

Chemical Sciences

www.hw.ac.uk/pg-chemical

Programme	Level	Award
R Institute of Chemical Sciences	Research	PhD/MPhil/MSc

Energy and Renewables

www.hw.ac.uk/pg-energy

Programme	Level	Award
T Energy (Also by Online Learning and in Dubai)	Taught/Online	MSc/Diploma
T Energy with Entrepreneurship	Taught	MSc
T Renewable Energy Engineering (Also in Dubai and Malaysia)	Taught	MSc/Diploma
T Smart Cities and Communities (Erasmus Mundus)*	Taught	MSc

Programmes you may also be interested in:

- Renewable Energy Development MSc/Diploma (see page 79)
- Marine Renewable Energy MSc/Diploma (see page 80)

* We are a partner university for this degree and do not accept applications directly. Please apply through the programme website: <https://www.smaccs.eu/>

Mechanical, Process and Energy Engineering

www.hw.ac.uk/pg-mechanical

Programme	Level	Award
T Advanced Mechanical Engineering	Taught	MSc
T Advanced Mechanical Engineering with Industrial Application (Two years)	Taught	MSc
T Global Sustainability Engineering (Also in Dubai)	Taught	MSc/Diploma
T Global Sustainability Engineering with Industrial Application (Two years)	Taught	MSc/Diploma
R Institute of Mechanical, Process and Energy Engineering	Research	PhD/MPhil/MSc/EngD

Photonics and Quantum Sciences

www.hw.ac.uk/pg-photonics

Programme	Level	Award
R Institute of Photonics and Quantum Sciences	Research	PhD/MPhil/MSc/EngD

Robotics

www.edinburgh-robotics.org

Programme	Level	Award
T Robotics (Joint programme offered by the School of Engineering and Physical Sciences and School of Mathematical and Computer Sciences)	Taught	MSc
T Robotics with Industrial Application (Two years)	Taught	MSc

Programmes you may also be interested in (see page 84):

- Artificial Intelligence MSc/Diploma
- Artificial Intelligence with Speech and Multimodal Interaction MSc/Diploma

Sensors, Signals and Systems

www.hw.ac.uk/pg-sensors

Programme	Level	Award
R Institute of Sensors, Signals and Systems	Research	PhD/MPhil/MSc

Mathematical and Computer Sciences

Actuarial Mathematics and Statistics

www.hw.ac.uk/pg-actuarial

Programme	Level	Award
T Actuarial Management	Taught	MSc/Diploma/Certificate
T Actuarial Science	Taught	MSc/Diploma/Certificate
T Actuarial Management and Data Science	Taught	MSc/Diploma/Certificate
T Actuarial Science and Management (Two years)	Taught	MSc/Diploma
T Financial Mathematics (Joint programme with the University of Edinburgh)	Taught	MSc
T Applied Data Science (Joint programme with the School of Engineering and Physical Sciences)	Taught	MSc/Diploma

Research options for **PhD** and **MPhil** are available. Please visit our website for more information.

Computer Science

www.hw.ac.uk/pg-computer

Programme	Level	Award
T Artificial Intelligence	Taught	MSc/Diploma
T Artificial Intelligence (Two years)	Taught	MSc/Diploma
T Computer Science for Cyber Security	Taught	MSc/Diploma
T Computing (Two years)	Taught	MSc/Diploma
T Data Science	Taught	MSc/Diploma
T Data Science (Two years)	Taught	MSc/Diploma
T Games Design and Development	Taught	MDes
T Human-Robot Interaction	Taught	MSc/Diploma
T Human-Robot Interaction (Two years)	Taught	MSc/Diploma
T Information Technology (Business)	Taught	MSc/Diploma
T Information Technology (Software Systems)	Taught	MSc/Diploma
T Network Security	Taught	MSc/Diploma
T Software Engineering	Taught	MSc/Diploma

Research options for **PhD** and **MPhil** are available. Please visit our website for more information.

Mathematics

www.hw.ac.uk/pg-mathematics

Programme	Level	Award
T Applied Mathematical Sciences	Taught	MSc/Diploma
T Applied Mathematical Sciences (Two years)	Taught	MSc/Diploma
T Applied Mathematical Sciences with Climate Change Modelling	Taught	MSc/Diploma
T Computational Mathematics	Taught	MSc/Diploma
T Graduate Certificate in the Mathematical Sciences	Taught	Diploma/Certificate
T Mathematics	Taught	MSc/Diploma
T Mathematical Biology, Ecology and Medicine	Taught	MSc/Diploma
T Quantitative Finance and Mathematics	Taught	MSc/Diploma

Research options for **PhD** and **MPhil** are available. Please visit our website for more information.

Social Sciences

Edinburgh Business School

Management

These programmes incorporate expertise from across the Edinburgh Business School's seven Specialist Business subject areas.

www.hw.ac.uk/pg-management

Programme	Level	Award
T Business Research Methods O/L (Also by Online Learning)	Taught/ Online	PG Cert
T Master of Business Administration (MBA) (Also in Dubai and Malaysia)	Taught	MBA
T Executive MBA (Taught)	Taught	MBA
T International Business Management	Taught	MSc
T International Business Management with Placement (Two years)	Taught	MSc
O/L Master of Business Administration (MBA) (Online Learning)	Online	MBA
O/L MBA with specialism in Finance (Online Learning)	Online	MBA
O/L MBA with specialism in Strategy (Online Learning)	Online	MBA
R Doctor of Business Administration O/L (Also by Online Learning)	Research	DBA
R Business Management (Full time/Part time)	Research	PhD

Accounting

www.hw.ac.uk/pg-accounting

Programme	Level	Award
T Accountancy	Taught	MSc
T International Accounting and Finance (Also in Dubai)	Taught	MSc
R Accounting	Research	PhD

Economics

www.hw.ac.uk/pg-economics

Programme	Level	Award
T Economics, Banking and Finance	Taught	MSc
T Energy and Economics	Taught	MSc
R Economics	Research	PhD

Finance

www.hw.ac.uk/pg-finance

Programme	Level	Award
T Finance (Also in Dubai)	Taught	MSc
T Finance and Management (Also in Dubai)	Taught	MSc
T International Banking and Finance	Taught	MSc
T Investment Management (Also in Dubai)	Taught	MSc
T International Business Management with Finance (Also in Dubai and Malaysia)	Taught	MSc
O/L Financial Management (Online Learning)	Online	MSc/Diploma
R Finance	Research	PhD

Human Resource Management and Law

www.hw.ac.uk/pg-hrm

Programme	Level	Award
T International Business Management with Human Resource Management (Also in Dubai)	Taught	MSc
T Sustainable Human Resource Management (Also in Dubai)	Taught	MSc
R Human Resource Management	Research	PhD

Logistics and Operations Management

www.hw.ac.uk/pg-logistics

Programme	Level	Award
T International Business Management with Project Management	Taught	MSc
T International Master in Industrial Management (Also in Dubai) (Double Award MSc with UPM Madrid and TUM Munich)	Taught	MSc
T Logistics and Supply Chain Management O/L (Also in Dubai) (Online Learning)	Taught/ Online	MSc
T Maritime Logistics and Business (in partnership with Piri Reis)	Taught	MSc
T Operations Management (Also in Dubai)	Taught	MSc
R Logistics	Research	PhD

Marketing

www.hw.ac.uk/pg-marketing

	Programme	Level	Award
T	Digital Marketing	Taught	MSc
T	International Fashion Marketing	Taught	MSc
T	International Marketing (Also in Dubai)	Taught	MSc
T	International Marketing with Consumer Psychology	Taught	MSc
T	International Business Management with Marketing (Also in Dubai and Malaysia)	Taught	MSc
R	Marketing	Research	PhD

Strategy and Enterprise

www.hw.ac.uk/pg-strategy

	Programme	Level	Award
T	Business Analytics and Consultancy (Also in Dubai)	Taught/	MSc
O/L	(Online Learning)	Online	
T	Business Strategy, Leadership and Change (Also in Dubai and Malaysia)	Taught	MSc/Diploma
O/L	Digital Leadership (Online Learning)	Online	MSc
T	Strategic Project Management (Also in Dubai and Malaysia)	Taught	MSc
R	Strategy and Enterprise	Research	PhD

School of Social Sciences

Psychology

www.hw.ac.uk/pg-psychology

	Programme	Level	Award
T	Business Psychology (Also in Dubai and Malaysia)	Taught	MSc/Diploma
T	Business Psychology with Coaching (Also in Dubai)	Taught	MSc/Diploma
T	Business Psychology with Human Resource Management	Taught	MSc/Diploma
T	Business Psychology with Intercultural Communication	Taught	MSc/Diploma
R	Psychology Research	Research	PhD/MPhil

Languages and Intercultural Studies

www.hw.ac.uk/pg-translating

	Programme	Level	Award
T	Interpreting	Taught	MSc
T	Interpreting and Translating	Taught	MSc
T	Translating	Taught	MSc
R	Intercultural Research	Research	PhD
R	Translation and Interpreting	Research	PhD

Each Translation and Interpreting MSc degree can be studied from Chinese, French, German and Spanish into English and vice-versa, unless stated otherwise.

T Taught Programme O/L Online Learning R Research Degree

Design, Textiles and Innovation

Design and Textiles

www.hw.ac.uk/pg-fashion

	Programme	Level	Award
T	Design Management (Also in Dubai)	Taught	MSc
T	Digital Design and Innovation	Taught	MA
T	Fashion and Textiles Design	Taught	MA
T	Fashion and Textiles Design with Placement	Taught	MA/Diploma
T	Fashion and Textiles Management	Taught	MSc/Diploma
T	Interior Architecture and Design (Also in Dubai)	Taught	MA/Diploma
R	Design and Technology	Research	PhD/MPhil
R	Heritage and Innovation in Design	Research	PhD/MPhil
R	Practice-Based Design	Research	PhD/MPhil

Made to Make an Impact

Our communities of scholars come from across the world and for a purpose: to transform people and the world. As leaders in ideas and solutions, they deliver innovation and educational excellence in business, engineering, design and the physical, social and life sciences.

Our pioneering research is...

Driving Global Sustainability

Advancing Artificial Intelligence

Innovating Global Design
Practice

Revolutionising Cell Biology

Tackling Global Issues in
Housing and Poverty

Designing New Solutions in
Conductive Textiles

Exploring Human Impact on
the Deep Sea

Bridging Global Language
Boundaries

Generating a Safer Environment

Protecting Human Health

Leading Quantum Technologies

Challenging Global Oil Industry
Issues

Pioneering Decarbonisation
and Carbon Storage

Securing Global Communication

Be FutureMade

► www.hw.ac.uk/research.htm

Postgraduate Research Degrees

Heriot-Watt provides an outstanding environment to undertake postgraduate research leading to a PhD or EngD. We currently host around 600 PhD and EngD students. First-class training in both specialist and generic skills are provided, which focus on supporting your career development.

Some PhD studentships are available for excellent students, of any nationality across all Schools.

Research projects are offered with supervisors working at the cutting edge of contemporary topics from the fundamental to the applied in all of our disciplines. Projects often involve working in research teams, with industry involvement, and many are collaborative with other leading research laboratories around the world.

A £7 million Postgraduate Centre provides a hub that combines facilities for training, outreach, and social interaction with other postgraduate students from across the University.

RESEARCH DEGREES:

PhD and EngD

DBA

MPhil

Research opportunities and scholarships

School, Research Institute, and Research Centre web pages provide detailed information on research and potential research project opportunities for PhD and EngD studies.

We offer a number of competitive funded scholarships for research degree studies. Full or partial support may be available for well-qualified candidates from UK research councils, research pools, charities, industry or the University's own scholarships.

Other competitive funding is available such as RCUK funded Doctoral Training Awards.

The research degrees listed are not exhaustive. If you have an idea around a specific research theme please get in touch. Our contact details are listed opposite.

The research degrees listed are not exhaustive. If you have an idea around a specific research theme please get in touch.



PhD opportunities in Energy, Geoscience, Infrastructure and Society
E: egis-pgr-apps@hw.ac.uk

PhD opportunities in Engineering and Physical Sciences
E: pgr.eps@hw.ac.uk
T: +44 (0) 131 451 3027

PhD opportunities in Social Sciences
E: pgadmissions.soss@hw.ac.uk
T: +44 (0) 131 451 3284

PhD opportunities in Mathematical and Computer Sciences
E: macspgenquiries@hw.ac.uk
T: +44 (0) 131 451 8444/8337

PhD opportunities in Textiles and Design
E: enquiries@tex.hw.ac.uk
T: +44 (0) 1896 892156

PhD opportunities in Edinburgh Business School
E: dbaenquiries@ebs.hw.ac.uk
T: +44 (0) 131 451 3090

Be FutureMade

► www.hw.ac.uk/phd

Inter-university doctoral training centre schemes

HERIOT-WATT PARTICIPATES IN A NUMBER OF INTER-UNIVERSITY DOCTORAL TRAINING CENTRE SCHEMES:

- EPSRC Centre for Doctoral Training in Applied Photonics
- EPSRC Centre for Doctoral Training in Critical Resource Catalysis (CRITICAT)
- Scottish Doctoral Training Centre in Condensed Matter Physics (EPSRC)
- Scottish Graduate School of Social Sciences (ESRC)
- Continuous Manufacturing and Crystallisation (EPSRC/Heriot-Watt/Industry)
- ETP Energy Industry Doctorate Programme (SFC/Heriot-Watt/Industry)
- Scottish Universities Physics Alliance Prize Studentships (SFC/Heriot-Watt)
- Scottish Informatics and Computer Science Alliance Prize Studentships (SFC/Heriot-Watt)
- Marine Alliance for Science and Technology for Scotland Prize Studentships (SFC/Heriot-Watt)
- The EPSRC Centre for Doctoral Training in Robotics (Heriot-Watt/University of Edinburgh)
- Embedded Intelligence (Heriot-Watt/Loughborough)
- The EPSRC Centre for Doctoral Training in Mathematical Modelling, Analysis and Computation (MAC-MIGS) (Heriot-Watt/University of Edinburgh)
- Centre for Doctoral Training in Oil and Gas (NERC)
- Scottish Universities Partnership for Environmental Research (SUPER)
- GeoNetZero Centre for Doctoral Training: Geoscience and its role in the Low Carbon Energy Transition

RESEARCHER DEVELOPMENT

Research Futures provides postgraduate research students with a full programme of training and development throughout their PhD, EngD or MPhil studies. The main programme is delivered at the Edinburgh campus and contains a wide range of courses pitched at various levels of expertise. Course sessions are typically delivered in three-hour sessions facilitated by experts.

Heriot-Watt University is a member of Vitae, an international organisation dedicated to world-class professional and career development of researchers. Vitae offers a wealth of resources and advice designed specifically for researchers.

World-class research

We have a well-established, global reputation for the quality of our research.

80%+

80% of academic staff are currently engaged in research at internationally recognised levels, delivering research as diverse as robotics and artificial intelligence, decarbonisation to create a carbon neutral future, to finding solutions to global challenges facing our planet from the deep sub-surface of the earth to the polar regions, in partnership with the British Geological Society.

No.1

In the REF 2014 Heriot-Watt ranked 1st in Scotland for research impact.

9th

In the REF 2014 Heriot-Watt ranked 9th university in the UK for research impact.

82%

Overall 82% of our research is assessed as world-leading or internationally excellent in our core disciplines of science and engineering, business and management, languages and design (REF 2014).

Be FutureMade

► www.hw.ac.uk/phd



Made to Apply



Ready to kick start your studies?
See our application information.

APPLYING FOR TAUGHT AND RESEARCH POSTGRADUATE PROGRAMMES

Entry requirements

General rules are:

- For entry to a Postgraduate Diploma programme you need to have completed a first degree.
- For entry to a taught Masters programme you need a minimum of a first degree at Lower Second Class Honours (or the equivalent).

- For entry to a research programme you need to have the equivalent of a first degree at the level of First Class or Upper Second Class Honours (or the equivalent).
- If you have relevant work experience and some academic attainments but no degree it may be possible to be admitted to a postgraduate programme. Please contact us to discuss your background.
- If English is not your first language then an IELTS score of 6.5 (minimum) will be required. A score of 6.0 is also required in each individual element of IELTS. You can also study an English programme at Heriot-Watt to fulfil this condition.

Making your application

To submit an application online you will need to create an account. You can then use these login details to upload your supporting documents or track the status of your application. For further details:

► www.hw.ac.uk/pg-uk-apply

APPLY FOR COURSES IN ENGLISH FOR POSTGRADUATE STUDY

You can apply for our courses online. Full details can be found here:

► www.hw.ac.uk/english-uk-apply

- You will need to create an account, choose the academic year in which you wish to study (please note that the summer pre-session programme in 2022 is in the 2021-22 academic year) then choose an appropriate English language programme.
- Once you have filled in all the relevant sections please upload the following documents:
- Copy of the photo page of your passport
- English language certificates, e.g. IELTS, from an approved centre.

If you have already created an account for your chosen degree programme(s) you can log back in (www.hw.ac.uk/pg-uk-apply) and apply for the Foundation English programme without the need to create a new login and account.

ENGLISH FOR POSTGRADUATE STUDY

Postgraduate study requires a good level of English language proficiency and academic skills to ensure you can understand lectures, participate in seminars, read and understand academic research papers and use ideas in your writing. There are a range of programmes to help you to reach the level you need to be successful on your degree.

Full details of all our English programmes can be found here:

► www.hw.ac.uk/english

Certificate in Foundation English

This is for students with a lower level of English who require a longer period of language study before they are ready to start their degree. You will have a minimum of IELTS 4.5 or equivalent. The programme includes 20 hours of taught classes per week over two semesters, supplemented by self-study. If you pass all your courses, you can gain a Certificate in Foundation English.

Pre-session programmes for students still to meet English entrance requirements

With an IELTS level of 5.0 you can join a fourteen-week pre-session programme commencing in May or a ten-week programme starting in June, and with an IELTS level of 5.5 you can join a six-week programme starting in July. Please refer to the website for required level of individual skills.

Visit the website for more details:

► www.hw.ac.uk/english-uk-apply

Please note: In some circumstances it might be possible for us to issue you with a single Confirmation of Acceptance for Studies (CAS) which you can then use to apply for a student visa to cover both the pre-session and degree programme. However you must pass the pre-session programme in order to progress to degree study.

GLOBAL STUDENT OFFICE

Our Global Student Office team can provide help and support on all issues relating to international students including Tier 4 visa applications (both in the UK and outside of the UK), Academic Technology Approval Scheme (ATAS), living and working in the UK, accommodation, childcare, healthcare and organising your finances. You can find more information online:

► www.hw.ac.uk/isa



Made Welcome

Welcome to Heriot-Watt,
the home of your future.

As well as supporting your academic career we want to ensure you're getting all the additional help you need. To help you achieve your goals we have a wide range of high-quality academic and personal support staff who can be contacted whenever you need them.

FINANCES

Effective financial planning is essential for all postgraduate students, whether you are funded or self-financing, a UK national or an international student. We estimate that you will need around £9,700 per annum to meet living costs. Outline student budgets for September 2022 entry will be available from March 2022 at: www.hw.ac.uk/finances

The British Council provides extensive information on student funding options at: <https://study-uk.britishcouncil.org/scholarships>

Additional information on potential sources of University funding is available at: www.hw.ac.uk/scholarships

ACCOMMODATION

We have new, state-of-the-art halls of residence on our Edinburgh Campus which provide spacious student accommodation.

Find out more: www.hw.ac.uk/edin-pg-newhalls

Postgraduate students are housed in self-catering halls, most with en-suite facilities and internet access, with wi-fi throughout.

Find out more: www.hw.ac.uk/accommodation-ed

For help to find suitable accommodation off-campus please contact: flats@hw.ac.uk

For information on student accommodation at our Scottish Borders Campus go to: www.hw.ac.uk/accommodation-sbc

For information on student accommodation at our Orkney campus go to: www.hw.ac.uk/accommodation-orkney

ACCOMMODATION GUARANTEE

New, full-time postgraduate students studying for the full academic year on our Edinburgh campus are guaranteed accommodation if they have accepted the offer of a place and applied for accommodation before the closing date advertised on our website.

TUITION FEES AND FUNDING

Tuition fees vary, depending on the programme you choose and where you come from. Information on tuition fees and funding can be found online: www.hw.ac.uk/fees-pg

You can find out how to pay here: www.hw.ac.uk/payment

FUNDING POSSIBILITIES

As a great deal depends on your own circumstances, funding cannot be guaranteed by any particular route. If you are not sure whether you qualify as a European Union or 'Other Overseas' student ask for a Fee Status form to complete, also available online. www.hw.ac.uk/fee-status



Made Welcome

STUDENT UNION

There's more to university life than simply getting your degree, and the Heriot-Watt University Student Union is all about helping you to have the best possible experience while you study here. The Student Union is run by students, for students. It aims to promote, defend and extend students' rights, provide advice and support, and empower student social and voluntary activity, as well as providing a range of services in an environment where individuals can feel safe and able to participate.

Find out more:

www.hwunion.com

GLOBAL STUDENT OFFICE

As a new international student at Heriot-Watt, you'll be joining one of the largest international student cohorts at a Scottish university. Our Global Student Office team are here to help you with your preparation for coming to study and live in the UK. We offer advice and assistance on immigration and tuition fees, and general guidance on living and studying in the UK (council tax, bank accounts, healthcare, etc.).

Find out more:

www.hw.ac.uk/isa

CHAT WITH A STUDENT

Got a question about a course or student life at Heriot-Watt? Our new Unibuddy scheme allows you to send a message to one of our friendly student ambassadors, who use their first-hand experience to tell you all you need to know.

Find out more:

www.hw.ac.uk/unibuddy

DISABILITY SERVICE

Advice and guidance are just a call or email away. Do contact the Disability Service prior to your arrival to discuss your support needs on: +44 (0) 131 451 3509.

Find out more:

www.hw.ac.uk/disability

INFORMATION AND TECHNOLOGY SERVICES

We provide state-of-the-art Library, Information and Technology services to support your research, learning, teaching and administrative activities.

Find out more:

www.hw.ac.uk/is

SPORT AND WELLBEING

In 2016, our Edinburgh Campus became home to Oriam, Scotland's Sports Performance Centre. Housed in a stunning £33 million purpose-built sports facility, this cutting-edge development transforms Heriot-Watt into the performance training centre for, among others, Scotland's national football and rugby squads. Our centre was also the catalyst for new postgraduate programmes in management and leadership in sport, courses that combine industry expertise within Oriam with the theoretical underpinning of our world-leading academics. This world-class facility will support you to develop your full potential as an athlete and student, making our Edinburgh campus a perfect place for you to combine academic and sporting performance.

Find out more:

www.oriamscotland.com

COUNSELLING AND SUPPORT

We can offer you counselling, support and information to help you deal with any difficulties you may face while studying with us.

Find out more:

www.hw.ac.uk/counselling

Made Welcome

CHILDCARE

We have a nursery based on our Edinburgh campus. It provides childcare for children between three months and five years old. It is called Pinocchio's and is fully registered with the Care Inspectorate.

Find out more:

www.pinocchiosnursery.co.uk
www.hw.ac.uk/childcare

CHAPLAINCY AND WORSHIP

The Chaplaincy on our Edinburgh campus exists to promote spiritual and social wellbeing. It is open to everyone – both students and staff – from all backgrounds and cultures. People of all faiths and no religious faith are welcome. Separate prayer rooms are provided for Muslim worship.

Find out more:

www.hw.ac.uk/chaplaincy

HEALTH AND WELLBEING

Staying healthy, both physically and mentally, ensures you remain focused on your studies, achieve your full potential and enjoy the experience of being a student.

Find out more:

www.hw.ac.uk/support

PERSONAL TUTORING

Every student has a member of academic staff allocated to them as a personal tutor who will be a key source of advice, guidance and support during your time at Heriot-Watt. Your personal tutor is your first point of contact if you need advice on any issue, both academic and non-academic, and can refer you to other support services where relevant for non-academic matters. Personal tutors provide a clear point of contact for you throughout your degree.

Find out more:

www.hw.ac.uk/personaltutoring

COACHING AND MENTORING

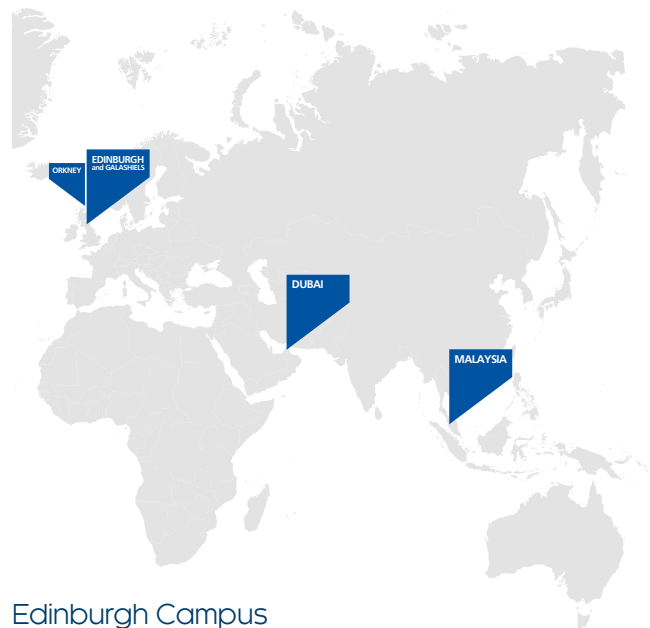
No-one knows more about what it is like to study at Heriot-Watt than our current students. Heriot-Watt offers two schemes which enable new students at Edinburgh campus to find out what studying here will really be like: E-Mentoring (prior to your arrival) and Peer Mentoring (after you arrive on campus).

Find out more:

www.hw.ac.uk/uk/students/health-wellbeing/edinburgh/coaching.htm



World Campuses



UK Campuses



Edinburgh Campus



Edinburgh Campus

Edinburgh EH14 4AS

T: +44 (0) 131 449 5111

F: +44 (0) 131 449 5153

Dubai Campus

Dubai Knowledge Park
PO Box 38103

Dubai

United Arab Emirates

T: +971 4 277 4500

F: +971 4 447 7350

Scottish Borders Campus

Galashiels TD1 3HF

T: +44 (0) 1896 753351

F: +44 (0) 1896 758965

Malaysia Campus

No 1 Jalan Venna P5/2

Precinct 5

62200 Putrajaya

Malaysia

T: +60 3 8894 3888

F: +60 3 8894 3999

Orkney Campus

International Centre for
Island Technology (ICIT)

Old Academy

Back Road

Stromness

Orkney

KW16 3AW

T: +44 (0) 1856 850605

www.hw.ac.uk

DISCLAIMER OF LIABILITY

Heriot-Watt University will make all reasonable efforts to deliver the programmes described in this prospectus.

Prospective students should be aware that it is occasionally necessary to modify, discontinue or combine programmes and/or make changes to entry requirements. This may be necessary for a number of reasons such as low enrolments, illness or departure of staff, industrial action or reduction of funding. The University does not provide education on a commercial basis, and is dependent on public and charitable funds which require the University to deploy its resources efficiently and rationally. Changes will only be made if the University reasonably considers it to be necessary.

If a programme is discontinued, the University will use reasonable endeavours to provide a suitable alternative and will take all reasonable steps to minimise disruption; allow a student to withdraw without penalty if a programme is cancelled or significantly varied, with an appropriate refund of tuition fees and deposits.

Heriot-Watt University is a registered Trademark. The logo is a trademark of the University. Neither can be used unless prior written permission has been obtained. All information correct at the time of going to print.

Heriot-Watt reserves the right to withdraw opportunities to participate in the Go Global programme including Inter-Campus Transfers, at any time.

Heriot-Watt University is a Charity registered in Scotland, SC000278.
© Heriot-Watt University, July 2021. All rights reserved.

Editor: Fiona Scott, Marketing and Communications, Heriot-Watt University.
Design and Production: Heriot-Watt University Design Studio, Whitespace.
Photography: Paul Dodds, Laurence Winram, Douglas McBride, Fraser Dear, Tom Finnie, Mark Symes, The Edinburgh Blog, www.ourscottishborders.com, Simon Quinn, Fiona Nimmo, Anthony Stone, Matt Davies, Colin Hattersley, Nick Pugh, David Anderson.

Future Made



@HeriotWattUni



@HeriotWattUni



heriotwattuni



heriotwattuni



heriot-watt-university

► www.hw.ac.uk/pgt

► studywithus@hw.ac.uk