



PENINSULA
COLLEGE

INTERNATIONAL PROGRAMS

Where Every Student Counts



**COLLEGE
CONTACT.COM**

College Contact GmbH
Hanauer Landstraße 151-153, 60314 Frankfurt am Main
Telefon: 069 - 907 2007 30
E-Mail: beratung@college-contact.com
Web: <https://www.college-contact.com>

Peninsula College

Port Angeles, Washington





WELCOME

We provide individual attention from admission to graduation.

- Admissions & arrival: Visa, airport pick-up, housing placement
- Getting started: Area and college orientation, testing, registration
- Advising: Immigration & OPT, academic planning and transfer
- Additional support: Personal counseling, tutoring, health insurance
- Activities: Volunteer, clubs, athletics, local trips, community events

Peninsula College Campus

- Sustainably designed, state of the art facilities
- Classrooms equipped with the latest technology
- State-of-the-art library
- Computer, Math, and English labs with tutoring available
- Native American Longhouse “House of Learning”



The buildings and classrooms are very modern with new computers. It is an excellent place to learn. You can make friends with students from many countries.

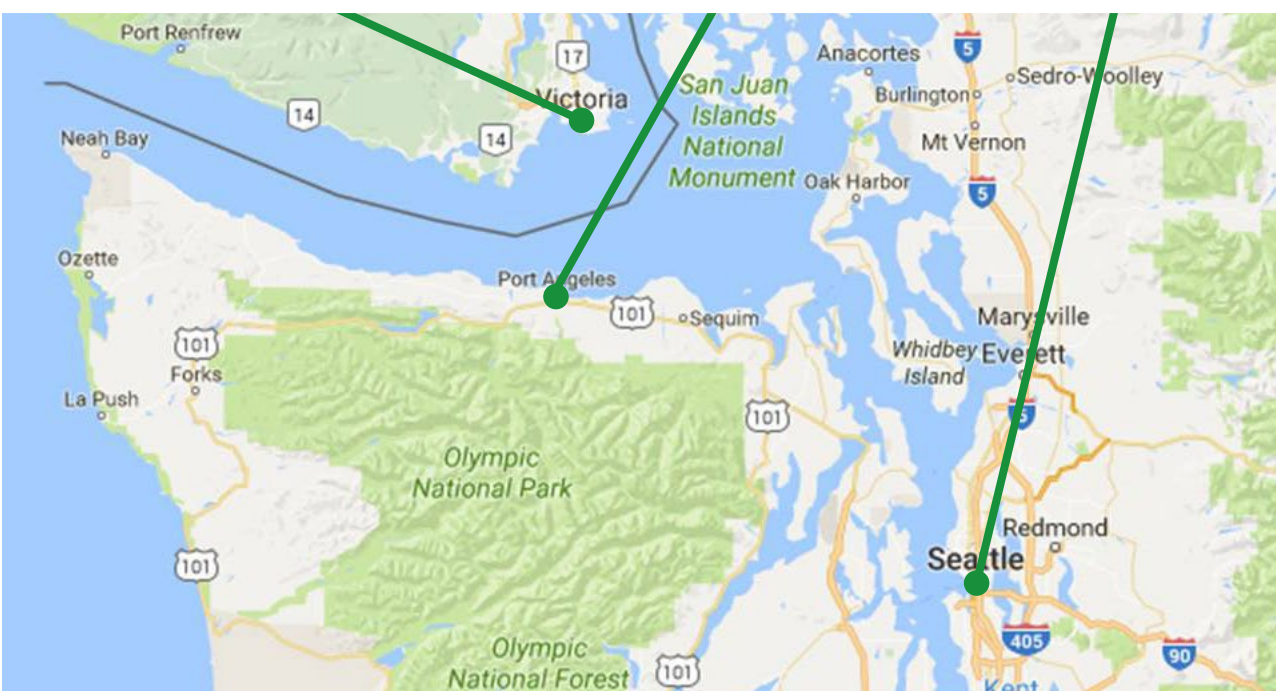
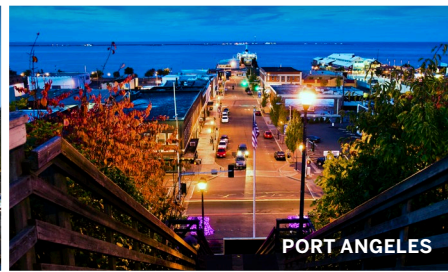


— Jingjing
China



The Olympic Peninsula

- 2.5 hours from Seattle, Washington
- 1.5 hours from Victoria, British Columbia, Canada
- Located at the foothills of Olympic National Park (UNESCO site)
- Located minutes from the beach
- Beautiful, park-like natural setting
- On bus line



Bachelor of Applied Science in Applied Management (BAS)

The Peninsula College Bachelor degree is designed with academic rigor enabling graduates to apply directly to Master of Business Administration (MBA) and other graduate programs.

“I applied to Peninsula College’s BAS Program because PC is community-oriented. I plan to get work experience here in the US for a year or two before going back to Malaysia.”

— Jordan Tan
Malaysia 



PROGRAM OF STUDY

- The curriculum includes core courses in accounting, management theory, organizational behavior, strategic management, economics, project management, social media, decision-making and problem-solving and the legal environments of business.
- Bachelor program graduates can anticipate opportunities in management positions across a wide range of industries.

INTERNSHIP: A SIGNATURE FEATURE

- Students will participate in one, 250 hour private or public internship. Students work in partnership with the internship coordinator and the employer to develop their internship experience.

AFFORDABLE

- Peninsula College is committed to keeping education costs reasonable. Our BAS Program is very affordable with an average cost nearly 2/3 less than four year universities.

SUCCESSFUL RESULTS

- 80% of students from our BAS Program obtained management positions upon graduation.
- Whether you want to manage an organization, advance your career, or become an entrepreneur, our program can help you achieve your goals.

Honors Program

If you are excited to learn, want to study with classmates who share your enthusiasm, and seek an opportunity to work with faculty mentors to explore your unique intellectual interests, the Peninsula College Honors Program is for you.

A ONE OF A KIND EXPERIENCE

- Unique educational program for highly motivated students who seek to be engaged in an intensive learning process.
- Students develop critical thinking skills as they pursue an Associate of Arts or Associate of Science degree.
- Students graduate with an enriched academic experience, culminating in their Capstone Project.

CAPSTONE PROJECT: A SIGNATURE FEATURE

- Students learn how to integrate knowledge from all their courses and extracurricular experiences and to share their insights with others in the Honors Program.
- Students discover an idea to pursue which becomes a focal point for a capstone project involving research, service learning, artistic expression, or even study abroad.
- Students may work with a faculty mentor on a project the faculty member is conducting, or develop a project that is uniquely their own.

The Honors Program has allowed me to learn more independently and explore with other motivated students. My success in the Honors program will help me transfer to my top choice of university in the U.S.

— Lisa Hoang
Vietnam



Programs

**Bachelor of Applied Science in
Applied Management (BAS)**

Associate in Art Honors

Associate in Arts Transfer

Associate in Business Transfer

Associate in Computer Science

Associate in Science Transfer

Professional Technical

Intensive English

International English as a Second Language (IESL)

- Small classes (less than 15 students) with highly trained and experienced faculty
- On-campus placement exam (No TOEFL required)
- Guaranteed admission into college-level classes after IESL completion
- Academic College Bridge Program
- College advising, free tutoring, writing and computer labs

2 + 2 = 4

years
at PC

years at
university

**Bachelor's
Degree**



“

Attending Peninsula College was one of the best decisions I have made because those college credits got me straight to second year of university in the United Kingdom.

”

— **Tony Cerda Palmer**
Spain



Student Transfers

Our international students are accepted at prominent universities that offer world-class programs in their preferred fields of study.

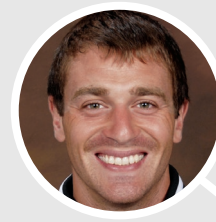
- Arizona State University
- Boston University
- Brigham Young University
- Cornell University
- CSU Long Beach
- George Washington University
- Gonzaga University
- Indiana University
- New York University
- Ohio State University
- Pennsylvania State University
- Savannah School of Art & Design
- Seattle University
- Stony Brook University
- UC Irvine
- University of Arizona
- University of California Los Angeles
- University of California San Diego
- University of Florida
- University of Illinois
- University of Maryland
- University of Massachusetts
- University of Minnesota
- University of Pennsylvania
- University of Southern California
- University of Texas
- University of Washington
- University of Wisconsin



**Peninsula College
international students
transfer to many
prominent universities
in their preferred fields
of study.**



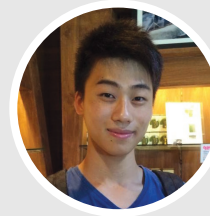
Mark Cottrell (*Canada*)
Western Washington University
Sports Psychology



Tuen Lung Lau (*Hong Kong*)
University of Washington
Electrical Engineering



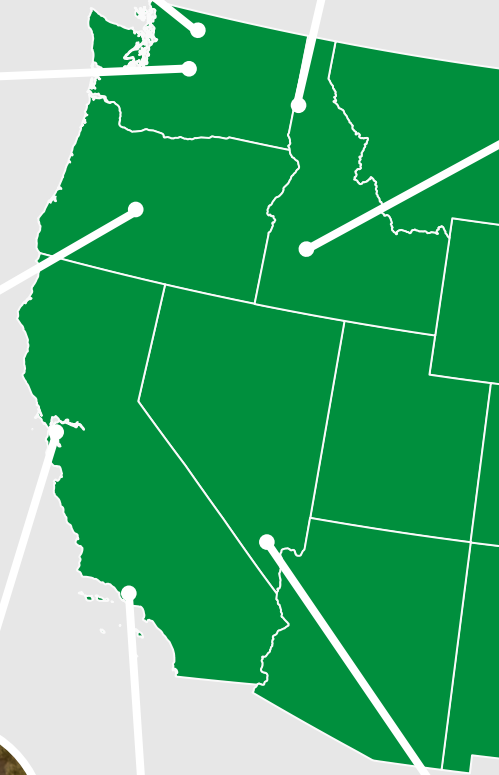
Ziqian Wang (*China*)
University of Oregon
Product Design



Toni Cerda (*Spain*)
Hult International Business School
Business Administration



Kevin Febryan (*Indonesia*)
University of Southern California
Business Administration



Aaron Jeffery (Australia)
Gonzaga University
Business



Yan Gioseffi (Brazil)
College of Idaho
Business



Gitta Duong (Vietnam)
University of Minnesota
Biology



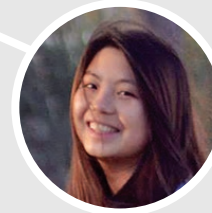
Jason Pan (China)
University of Wisconsin
Business



Hanny Chrysolite (Indonesia)
Cornell University
Resource Policy & Management



Farah Rajdi (Malaysia)
Boston University
Business Finance



Ronsa Mak (Hong Kong)
Penn State University
Business



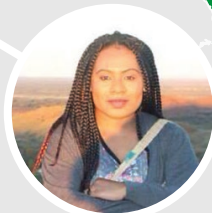
Varsha Tse (Hong Kong)
George Washington University
International Affairs



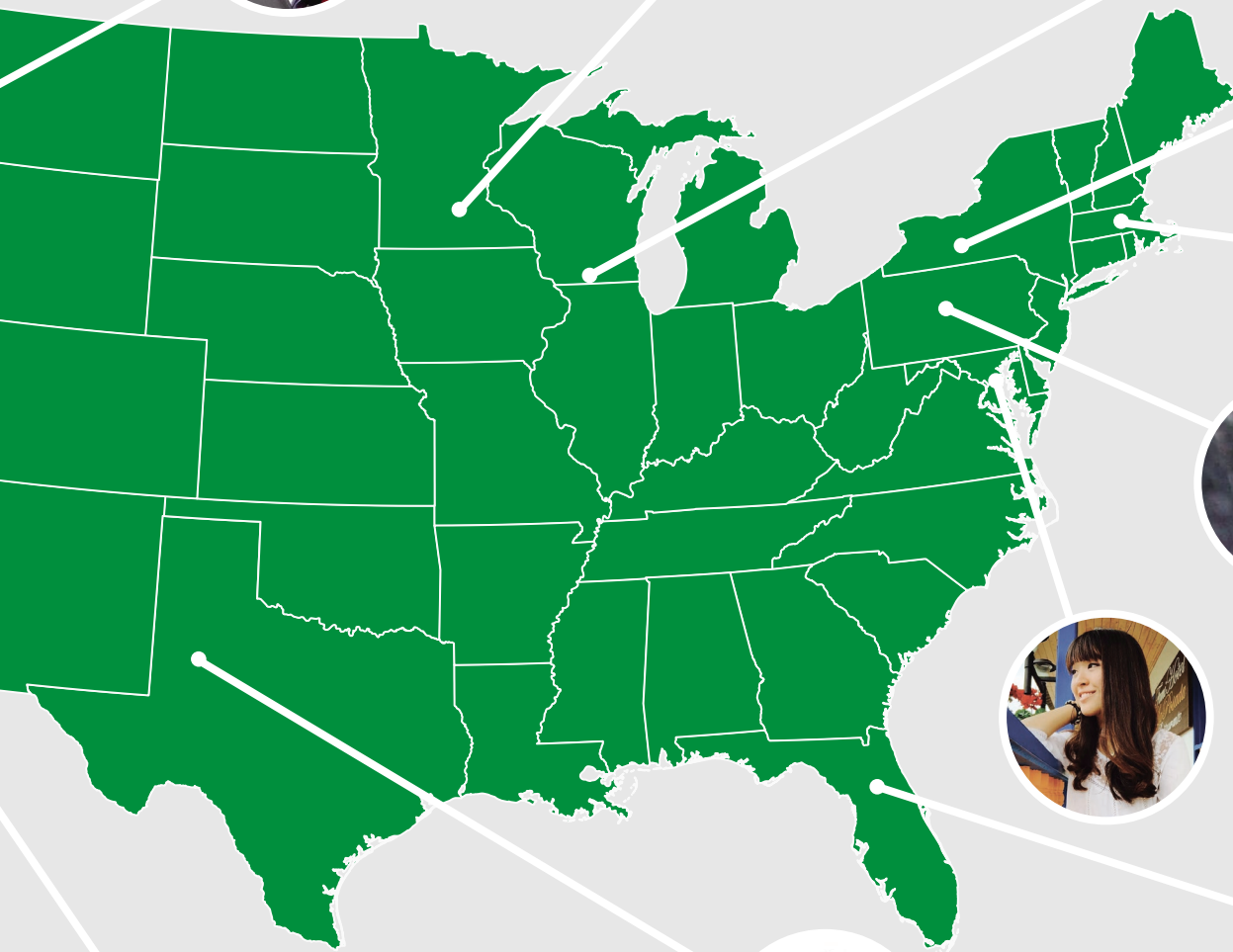
Kiki Chan (Hong Kong)
University of Florida
Biology



Yusei Ueda (Japan)
University of Nevada Las Vegas
Hospitality



Kirah Kanari (Papua New Guinea)
Texas Tech
Petroleum Engineering



Peninsula College offers international students two options for housing: homestay and off-campus apartments. Our helpful staff will assist to help you select the best option for your lifestyle.

HOMESTAY

- Students are carefully placed in welcoming homestays to satisfy students' desire to learn English, participate in household & local activities, and help learn life skills to become more independent.
- A full homestay includes: 3 meals every day, clean, private room, laundry facilities, internet access, and access to the local bus line.

STUDENT HOUSING THROUGH COLLEGIATE HOUSING INTERNATIONAL (CHI)

- Spacious units, two blocks from campus, no car required
- Fully furnished suites with a shared bathroom
- High speed internet service
- Furnished common living area with a kitchen, complete with appliances
- Laundry facilities

OFF-CAMPUS APARTMENTS

- Peninsula College refers students who wish to live off campus to a local apartment management source.
- Meals are not provided with the off-campus apartment option.
- Most apartments are located within a short distance from Peninsula College and are accessible by bus.

HOUSING AND STUDENT LIFE





I HAVE LIVED WITH A HOST FAMILY FOR TWO YEARS AND IT HAS BEEN A GREAT EXPERIENCE. THEY ARE REALLY NICE AND HELP ME TO ADAPT WITH THE NEW LIFE IN AMERICA. STAYING WITH MY HOST FAMILY HAS OFFERED ME SO MANY OPPORTUNITIES TO LEARN A NEW LANGUAGE AND CULTURE.

— NHAN TRAN
Vietnam



Admission Requirements and Process

1

- Completed application form
pencol.edu/forms/international-student-admissions-application
- Translated official copies of all scholastic records
- Proof of finance: statement from a bank, government, or sponsor and notarized Affidavit of Support from sponsor confirming the availability of sufficient funds for at least one year of study (three terms) at Peninsula College. Please see our flyer for the current minimum funds amount
- \$45 **non-refundable** application fee
- Copy of passport
- Proof of English proficiency
- Submit all documents on the same day to international@pencol.edu
Partial application packets will not be processed

If requirements are met, the I-20 is issued and shipped with the acceptance packet via UPS.
After you receive the I-20 and the acceptance, please:

2

- Pay I-901 SEVIS fee online
- Schedule visa interview online by completing and submitting form DS-160

3

- Prepare for visa interview using Visa Preparation Sheet provided in acceptance packet
- Notify us via email of Visa interview result
- Purchase flight ticket immediately to arrive on **scheduled arrival day at Seattle-Tacoma International Airport**, preferably between 10AM and 2PM
- Email copy of flight ticket
- Pay airport pick up fee and homestay placement fee





International Programs
Peninsula College
1502 East Lauridsen Blvd.
Port Angeles, WA 98262 U.S.A.



TEL: 1 (360) 417-6491
FAX: 1 (360) 417-6482



@PeninsulaCollege



@peninsulacollege



international@pencol.edu



pencol.edu/programs/international-student-programs



PENINSULA
COLLEGE

