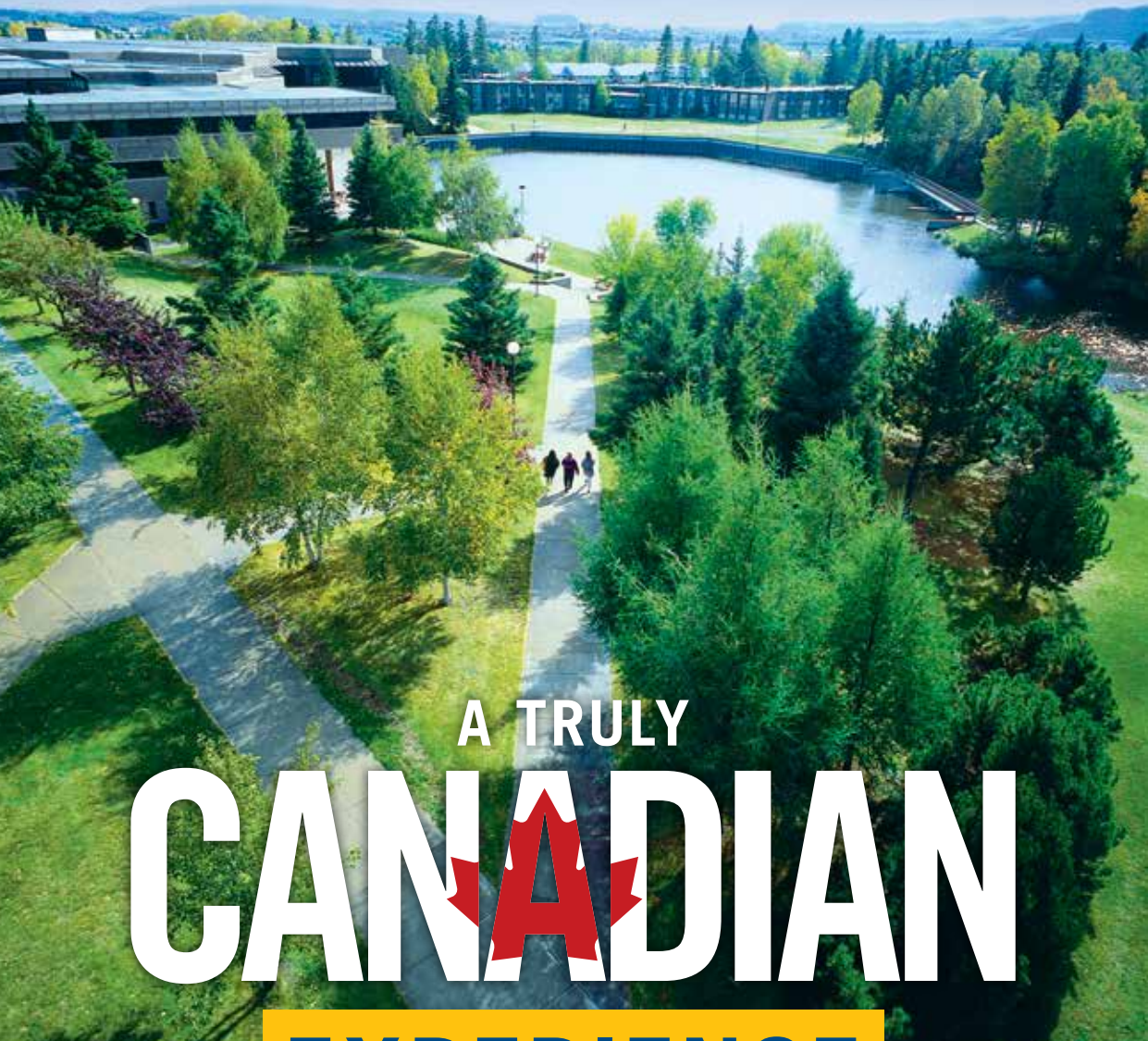




Lakehead

UNIVERSITY



A TRULY
CANADIAN
EXPERIENCE

2023-2024
INTERNATIONAL BROCHURE

THUNDER BAY & ORILLIA, ONTARIO, CANADA
LAKEHEADU.CA/INTERNATIONAL



THE LAKEHEAD ADVANTAGE

Studying at Lakehead University is not your typical university experience. We offer an exceptional academic education at our safe and supportive campuses located in the heart of Canada. Come and join our global campus communities – with students from over 70 nations from around the world – and begin your own Canadian journey at Lakehead University.



TOP 100
IN THE WORLD

Times Higher Education
Global Impact Rankings
2020 - 2022

SMALL CLASS SIZES

Over 80% of our classes have fewer than 50 students, and over 60% have fewer than 30 students. With student to faculty ratios of 15:1 (Thunder Bay Campus) and 13:1 (Orillia Campus), you will be able to speak directly with your professor, know your classmates, and engage in experiential learning and group work.



RESEARCH EXCELLENCE

With research opportunities at the undergraduate and graduate levels, Lakehead gives students the chance to start their research careers early and apply what they learn in class. Lakehead has ample lab space and an abundance of ongoing cutting-edge projects underway.

97.7% EMPLOYED
WITHIN 2 YEARS OF
GRADUATION 
ABOVE THE PROVINCIAL AVERAGE OF 95.6%

EXCELLENT EMPLOYMENT AND GRADUATE STUDIES PROSPECTS

At Lakehead, you can gain work experience while participating in co-op placements, undergraduate research and career programs through our Student Success Centre. Research projects strengthen graduate studies applications and allow you to network and prepare for future degrees.



CANADA'S TOP 10 UNIVERSITIES

PRIMARILY UNDERGRADUATE
MACLEAN'S 2014-2016, 2018-2021

EXCEPTIONAL STUDENT SUPPORT

Lakehead is dedicated to your success. Our Student Success Centre runs workshops on study skills, research, career preparation and academic topics. There is also an Academic Support Zone offering free supports in writing, mathematics and small group tutoring. Our on-campus medical clinic's doctors, nurses and psychologists are here to care for you. Lakehead International can help you with study permits, housing, airport pick-up and social events.

FUN, SAFE, AFFORDABLE LIVING: STUNNING, NATURALLY- BEAUTIFUL CAMPUSES

There are plenty of indoor and outdoor spaces to relax in and spend time with friends outside of class. It is easy to get involved in student-run clubs and associations and recreational sports. Safety is the top priority for Lakehead University Security Services, and they offer 24-hour services.



THREE CAMPUSES

THUNDER BAY

Thunder Bay is the largest metropolitan centre in Northwestern Ontario, with a population of 113,200. Experience the best of Canada with the breath-taking northern wilderness combined with a dynamic city life that creates endless opportunities for entertainment, leisure and adventure. The international airport makes it easy to access.

ORILLIA

Nestled between the lakes and forests near the Greater Toronto Area (GTA), Orillia is a vibrant city with a population of over 33,400. The city offers year-round opportunities for education, culture and entertainment and is just outside Toronto. Over 20 festivals are held each year in Orillia, celebrating arts, culture, music and recreation.

BARRIE

Barrie is the home to one of our Lakehead-Georgian campuses with its special diploma+degree programs. The vibrant city of Barrie has a population of 153,000 and is known for its friendly residents and four-season lifestyle. Barrie boasts a gorgeous waterfront on Kempenfelt Bay, nearby trails and ski hills, several shopping malls, a vast assortment of restaurants, and great nightlife.



26

RESEARCH CENTRES,
INSTITUTES & ANALYTICAL
FACILITIES





70+ NATIONS REPRESENTED
IN LAKEHEAD'S STUDENT BODY

“ We believe in the diversity that
comes from our students of many
cultures and many nations.”

- Lakehead University Belief Statement

ENGLISH LANGUAGE CENTRE

ACADEMIC ENGLISH PROGRAM (AEP)

13 weeks per level / 25 hours per week

Consisting of 5 levels, the AEP is designed for international students to prepare for future academic studies regardless of their incoming English language level. Each level of AEP takes one semester to complete.

- ▶ Students will improve their ability to read academic materials, write a variety of academic essays and give academic presentations individually and in groups
- ▶ Upon completion of Level 5, AEP graduates will meet the English language requirement for most Lakehead University programs without having to take another standardized English proficiency test such as TOEFL or IELTS
- ▶ If they have conditional admission to an undergraduate academic program at Lakehead University, students in Level 5 may also be allowed to take one academic course outside of their AEP class schedule. Please note that eligibility to take academic courses will be determined on a case-by-case basis and will depend on the student's individual scores in the standardized English proficiency test.

INTENSIVE ACADEMIC ENGLISH PROGRAM (IAEP)

9 weeks compressed summer program / 36 hours per week

IAEP takes place in the summer and is for conditionally-admitted students who want to start their academic program in September. Students should have the equivalent of IELTS 6.0 (with no individual score below 6.0) or TOEFL 75 (with no individual score below 18).

AEP & IAEP DATES	January 16 - April 21, 2023 (AEP)
	May 8 - August 4, 2023 (AEP)
	June 26 - August 25, 2023 (IAEP)
	September 11 - December 8, 2023 (AEP)

Note: If you have already been conditionally accepted to an Undergraduate Program, you do not need to apply for Academic English Program (AEP). You will automatically be considered.

VISITING INTERNATIONAL STUDENT PROGRAM (VIP)

4 months / 6 months

Take academic English and up to two academic courses for credit in your major at the same time. Flexible one- or two-semester program options available. Students must have a minimum IELTS of 5.5.

IELTS PREPARATORY COURSES & TESTING

4 weeks

Our IELTS Preparatory Course has 40 hours of instruction, offered intensively over 2 weeks or spread out over a 4 week period. You may also write both the General and Academic IELTS Exams at Lakehead University.

ENGLISH INNOVATION PROGRAM

2 weeks / 3 weeks / 4 weeks / customizable

Our innovative, short-term English programs combine English classes thematically based with exciting social and cultural activities. We offer continuous intakes throughout the year, including the summer.

- ▶ 10-20 hours of English classes per week
- ▶ A variety of social and cultural activities
- ▶ Guest speakers and site visits directly connected to course work
- ▶ Lakehead University Residence and meals
- ▶ Free airport pick-ups and drop-offs
- ▶ Program length: 2 weeks/3 weeks/4 weeks/customizable
- ▶ We can also customize programs

CULTURAL ACTIVITIES

Social activities and cultural experiences play an important role in enhancing students' English language proficiency. Every week, we offer our English Language Centre students activities such as visits to cultural sites of special interest and opportunities for cultural exchange with other international students. Check out photos of our students' adventures:

 facebook.com/LakeheadUniversityELC

Ask us about our online course delivery options:
international.english@lakeheadu.ca



YOUR HOME AWAY FROM HOME

RESIDENCE LIFE

Lakehead University Residence is a fun, safe and convenient place to live. Choose from dormitory style with meal plans, shared apartments or shared townhouses. You can live with Canadian and other international students and take advantage of activities, support and 24-hour security.

lakeheadu.ca/residence

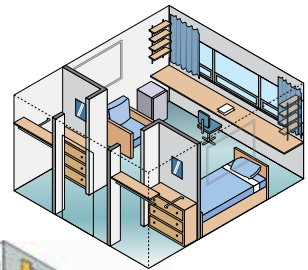
HOMESTAY


Homestay is a great way to practice English and learn Canadian culture. By living with a Canadian family, you can improve conversational English skills in daily life, participate in family activities and have a better understanding of Canadian customs and culture.

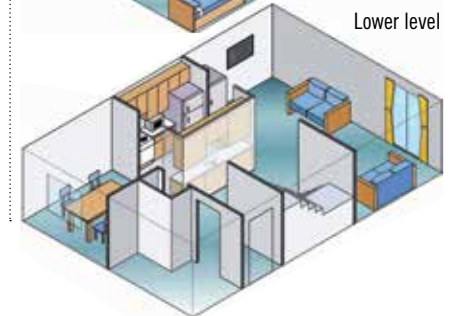
lakeheadu.ca/homestay

THUNDER BAY CAMPUS RESIDENCE OPTIONS

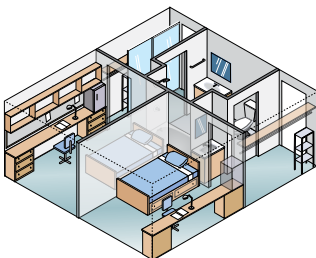
Single Dorm Room  18m²



Upper level
Townhouse  93m²
Lower level



ORILLIA CAMPUS RESIDENCE



Single Dorm Room  16.5m²



Apartment  77m²

 Orillia Campus  Thunder Bay Campus

TOP CANADIAN UNIVERSITY UNDER 10,000 STUDENTS IN THE WORLD

Times Higher Education
World University Rankings 2020-2022

INTERNATIONAL STUDENT SERVICES

Lakehead University is committed to supporting you at each step of your journey. From your arrival in Canada until graduation our International Student Services team is here for you!



COMPLIMENTARY AIRPORT PICK-UP

We welcome you to the city by arranging transportation from the airport to your residence. Once you confirm your Letter of Acceptance, you'll receive a welcome package with information on how to sign up for this service.



ORIENTATION & PRE-ARRIVAL TRANSITION

Through Orientation—which begins before you arrive with pre-arrival transition modules and live online events—you will experience an easier transition to university life and to Canadian culture. We provide culturally-relevant information that explores all the programming, support, and knowledge you need to help you feel comfortable and prepared for your studies at Lakehead. Our caring International student team can answer questions about your new campus, new community, and new culture—and help you connect with new friends from Canada and around the world.



CULTURALLY-RELEVANT STUDENT ADVISING

International student advisors are available for confidential, one-on-one meetings with you whenever you need to discuss academic, financial, personal, and cultural student issues and to provide coaching and guidance.



IMMIGRATION & CAREER ADVISING

Take advantage of our specialized culturally-relevant career, and certified immigration, advisors to assist with immigration permit applications, study permits, visas, extensions, cooperative education, and post-graduate work permits.



Sign up for our complimentary **Peer Mentor Program** to be connected to a senior student peer mentor to help guide you in your transition to Lakehead.

APPLYING TO LAKEHEAD UNIVERSITY

APPLICATIONS NOW OPEN FOR ALL 2023 PROGRAMS

UNDERGRADUATE STUDIES

Apply through an authorized Lakehead representative or directly to Lakehead University online via the corresponding application to the program you are interested in studying. For details, including admission requirements, visit:

lakeheadu.ca/international/applying

GRADUATE STUDIES

For all graduate program requirements and admission procedures, visit: lakeheadu.ca/academics/graduate/applying

AWARDS & BURSARIES

As an international student at Lakehead University, you may be eligible to receive scholarships and bursaries that will help you fund your education.

UNDERGRADUATE INTERNATIONAL ENTRANCE SCHOLARSHIPS

High school and college/university transfer students are automatically considered – no scholarship application required.

Academic Average (Canadian Equivalency)	Scholarship Total ⁴ (Value in Canadian Dollars Per Year)
90.0% & OVER	\$40,000 (\$10,000 x 4 years) ¹
80.0% - 89.9%	\$30,000 (\$7,500 x 4 years) ²
75.0% - 79.9%	\$6,000 (\$6,000 in Year 1 only) ³

1 Renewable provided a 90% average is achieved in each academic year. If a student's university academic average falls between 80.0% - 89.9%, the student will receive an amended scholarship valued at \$7,500/year for each subsequent academic year for the remaining term of the scholarship.

2 Renewable providing an 80% average is achieved in each academic year.

3 Non-renewable, one-time only scholarship awarded in Year 1

4 Maximum length of scholarship term is 4 academic years or until the first degree is awarded, whichever occurs first. To be considered eligible for scholarship consideration, recipients must be entering Years 1, 2, or 3 of a minimum 4-year undergraduate degree program. Recipients whose status changes and may be charged domestic fees will have their scholarship value reassessed to equate to the domestic entrance scholarship grid and regulations available at that time.

BURSARIES

Awarded via an application and demonstrating financial need:

- ▶ Alumni Association of Lakehead University International Student Bursary
- ▶ LUSU Bursary for an International Student

GRADUATE SCHOLARSHIPS AVAILABLE

More information: lakeheadu.ca/graduate-funding



COSTS

TUITION AND FEES 2022-2023

Amounts are in Canadian dollars.

UNDERGRADUATE	GRADUATE
\$27,295 - \$36,000 CAD for 1 academic year (8m)	\$23,000[◇] - \$32,000 CAD[◇] \$41,000[◇] - \$49,000 CAD⁺ (MBA) for 1 academic year [◇] 12 months ⁺ 16 months

Tuition varies by program. Ancillary fees of approximately \$814 - \$1,540 CAD apply to most programs.

HOUSING COSTS 2022-2023

Amounts are in Canadian dollars.

ON-CAMPUS	OFF-CAMPUS
Dorm Room: (meals included) \$11,512 - \$13,828 CAD (8m) Apartment / Townhouse: (meals extra) \$7,740 - \$8,153 CAD (8m) \$11,122 - \$11,535 CAD (12m)	1-bedroom apartment: (meals extra) \$8,000 - \$12,000 CAD (8m) \$12,000 - \$18,000 CAD (12m)

8m = 8 months 12m = 12 months

PROGRAMS

ENGLISH LANGUAGE CENTRE

PROGRAMS

Academic English Program (AEP)	T O
Intensive Academic English Program (IAEP)	T O
IELTS Preparatory Courses and Testing	T
Visiting International Student Program (VIP)	T O
English Innovation Program (EIP)	T O
Customized Programs	T O

UNDERGRADUATE PROGRAMS

PROGRAMS

BUSINESS ADMINISTRATION	
Honours Bachelor of Commerce (4 yr)	
Accounting *	T
Business Administration *	O
Business Analytics and Information Systems *	T
Business Economics	T
Finance *	T
General Management	T
Global Entrepreneurship *	O
Human Resources Management/Industrial Relations *	T
International Business	T
Marketing *	T
International Dual Degree Program: Lakehead University & Rennes School of Business, France	T O
Bachelor of Administration (3yr)	
Administration	T O
Administration (Management)	O
ENGINEERING	
Chemical Engineering *	T
Civil Engineering *	T
Electrical Engineering *	T LG
Mechanical Engineering *	T
Software Engineering *	T
Optional joint BEng+MBA* offered with all undergraduate Engineering programs at the Thunder Bay campus	T
EDUCATION	
Consecutive Education (2 yr BEd after Honours or Bachelor degree)	T O
Concurrent Education (4 yr HBA / HBSc + 2yr BEd)	T O
HEALTH & BEHAVIOURAL SCIENCES	
Kinesiology *	T
Nursing	T
Psychology	T O
Social Work	T O
NATURAL RESOURCES MANAGEMENT	
Environmental Management *	T
Forestry *	T

SCIENCE & ENVIRONMENTAL STUDIES

Anthropology	T O
Applied Life Sciences	T O LG
Bioinformatics	T
Biology	T
Chemistry	T
Computer Science *	T LG
Earth Science	T
Economics	T
Environmental Science	T
Environmental Studies	T
Environmental Sustainability *	O* LG
General Science	T O
Ge archaeology	T
Geography & the Environment	T O
Geology	T
Lakehead Science One	T O
Mathematics	T
Mathematical Physics	T
Natural Science	T
Physics *	T
Resource & Environmental Economics	T
Water Resource Science	T

SOCIAL SCIENCES & HUMANITIES

Criminology	O
English	T O
Gender and Women's Studies	T
General Arts	T O
History	T O
Indigenous Learning	T
Interdisciplinary Studies	O
Lakehead Arts One	T
Languages	T
Media, Film & Communications	O
Music	T
Outdoor Recreation, Parks & Tourism	T
Philosophy	T
Political Science (Pre-Law option available)	T O
Sociology	T O
Visual Arts	T

T Thunder Bay Campus

O Orillia Campus

LG Lakehead-Georgian Campus

*Co-operative Education offered

NOTE: Programs are subject to change without notice.

GRADUATE PROGRAMS

MASTERS PROGRAMS

BUSINESS	
Business Administration (MBA) (12 or 16 months)*	T
Business Management (MScMgt)	T
Business Skills Development Program (GMAT Equivalent for Admissions)	T
ENGINEERING	
Chemical Engineering	T
Civil Engineering **	T
Electrical and Computer Engineering **	T
Environmental Engineering **	T
Mechanical Engineering **	T
EDUCATION	
Master of Education *	T O
HEALTH & BEHAVIOURAL SCIENCES	
Health Sciences	T
Kinesiology (16 months)*	T
Nursing *	T
Psychology: Clinical or Psychological Science	T
Public Health *	T
Social Work	T O
Gerontology & Nursing Specializations Available	T
NATURAL RESOURCES MANAGEMENT	
Forest Management (16 months)*	T
Science in Forestry	T
SCIENCE & ENVIRONMENTAL STUDIES	
Archaeological Sciences	T
Biology	T O
Chemistry	T
Computer Science **	T
Economics **	T
Geology	T
Mathematical Sciences *	T
Environmental Studies	T
Physics *	T
SOCIAL SCIENCES & HUMANITIES	
English *	T
History *	T
Social Justice *	T
Sociology *	T
Gender & Women's Studies Specializations Available	T
DOCTORAL PROGRAMS	
ENGINEERING	
Doctor of Philosophy in Engineering (Civil)	T
Doctor of Philosophy in Engineering (Electrical & Computer)	T
Doctor of Philosophy in Engineering (Mechanical)	T
HEALTH & BEHAVIOURAL SCIENCES	
Doctor of Philosophy Clinical Psychology	T
Doctor of Philosophy Health Sciences	T
Doctor of Philosophy Psychological Science	T
EDUCATION	
Doctor of Philosophy in Educational Studies	T
NATURAL RESOURCES MANAGEMENT	
Doctor of Philosophy in Forest Sciences	T
SCIENCE & ENVIRONMENTAL STUDIES	
Doctor of Philosophy in Chemistry & Materials Science	T
Doctor of Philosophy in Biotechnology	T

* These Masters offer a course-based option.