



UNIVERSITY OF
BIRMINGHAM



COLLEGE
CONTACT.COM

College Contact GmbH

Hanauer Landstraße 151-153, 60314 Frankfurt am Main

Telefon: 069 - 907 2007 30

E-Mail: beratung@college-contact.com

Web: <https://www.college-contact.com>

INTERNATIONAL GUIDE

2020 ADMISSIONS



WHY BIRMINGHAM?

When you choose Birmingham, you are choosing to study at an outstanding university, renowned for changing lives and transforming society.

By studying at Birmingham, you will be taught by our outstanding academics, whose research shapes and informs your learning. Here, you benefit from the best of both worlds, a stunning green campus just a few minutes from the exciting,

vibrant city centre. When you choose Birmingham, you will receive high-quality teaching in a world-class research institution that nurtures talent and will support you throughout your life and career.

14TH

*IN THE TIMES AND THE
SUNDAY TIMES GOOD
UNIVERSITY GUIDE
2019 RANKINGS*

13TH

*IN THE COMPLETE
UNIVERSITY GUIDE
2020 RANKINGS*

81ST

*IN THE 2020 QS
WORLD UNIVERSITY
RANKINGS*

16TH

*IN THE GUARDIAN
UNIVERSITY GUIDE
2020 RANKINGS*

WE HAVE AN INTERNATIONAL
COMMUNITY OF MORE THAN
6,500 STUDENTS

3RD

MOST TARGETED
UNIVERSITY BY
LEADING EMPLOYERS
WWW.HIGHFLIERS.CO.UK

TEF Gold

AWARDED A **GOLD** RATING IN THE **TEACHING
EXCELLENCE FRAMEWORK (TEF)**

WELCOME

We are proud to have been welcoming international students to our beautiful Edgbaston campus for over 100 years. You are a central part of our community, bringing global experience, new ideas and an international outlook, which contribute to the academic and social richness of our university.

At Birmingham we encourage bold, independent thinking, and provide exceptional academic programmes that will stretch and challenge you.

The best universities depend on two great pillars: the quality of their education and on the quality of their research. At the University of Birmingham, our emphasis on the importance of both of these pillars is demonstrated by our strong placement in global rankings, based on indicators such as graduate prospects, publications and student experience.

We are ambitious and committed to investing in our success, appointing and developing outstanding academic colleagues across the breadth of our disciplines, investing in substantial new research programmes and scholarships, and building major international research collaborations. Our historic Edgbaston campus is undergoing one of the most

exciting and transformational redevelopments since the original buildings were completed in 1900, providing you with exceptional new facilities and accommodation.

Birmingham has a history of firsts and we are now the first global top 100 and Russell Group university to establish a campus in Dubai, building on our extensive international research and teaching collaborations and demonstrating our ambition as an outward-looking, world-class institution. The University of Birmingham Dubai will encompass our heritage, prestige and global renown, giving its pioneering students the opportunity to benefit from a British education that is recognised and valued by employees and institutions around the world.

Birmingham is a place for leading scientists, professionals, and students who want to be involved in world-class research and achieve a degree that will enhance professional opportunities around the world. We look forward to welcoming you to campus, and to playing our part in your future success.

Professor Sir David Eastwood
Vice-Chancellor, University of Birmingham

CONTENTS

Welcome	3
Key information	4
Your future starts here	5
Living in Birmingham	6
Our Edgbaston campus	8
Your facilities on campus	10
A place to call home	12
Living costs	14
Teaching quality and support	16
Supporting you during your studies	18
Funding your studies	20
Which level should you choose?	22
How to apply	24
Applying for an undergraduate programme	25
Applying for a taught postgraduate programme	26
Applying for a research programme	27



PROFESSOR SIR DAVID EASTWOOD
VICE-CHANCELLOR
UNIVERSITY OF BIRMINGHAM



FIND OUT MORE

@unibirmingham
 /unibirmingham
 @unibirmingham

www.birmingham.ac.uk

Before you apply, please visit our website to view essential information for all applicants: www.birmingham.ac.uk/applicantinformation. If the University makes you an offer, and you decide to accept it, a contract will be formed between you and the University. The website includes important terms, conditions and requirements that will apply to that contract, and on which the University will rely in its future relationship with you. It is essential that you read them carefully.

Information set out in the prospectus and on the University website is accurate at the date of publication.

KEY INFORMATION

MEET US IN YOUR COUNTRY

Our officers regularly travel overseas to meet you. To find out when we are in your country, visit www.birmingham.ac.uk/meetoverseas



KEY DATES FOR INTERNATIONAL STUDENTS

Undergraduate

4 September 2019 UCAS applications open
 Medicine or Dentistry applicants will need to apply by **15 October 2019**
 European Union applicants will need to apply by **15 January 2020**

30 June 2020 UCAS applications close

1 July 2020 UCAS Clearing opens for international students

31 July 2020 Accommodation application deadline

21 September 2020 Term begins

Postgraduate

If you require a visa to study in the United Kingdom, you will need to apply by 1 July 2020. We are not able to consider applications for 2020 made after this date.

If you do not require a visa, there are no official opening and closing dates for submitting your application, but we would advise if you intend to start your studies in September 2020 you apply by 1 July 2020 to allow time to submit your documents and prepare for the term.

MEET US ON CAMPUS

We understand that as an international student, it can be difficult to attend open days or visit our campus. If, however, you are in the UK, you are welcome to join one of our weekly campus tours. To book a campus tour, please visit www.birmingham.ac.uk/visit

CHAT TO US ONLINE

We run online chats so that you can get answers to your questions from the comfort of your home. You can ask current students and staff about Birmingham, our stunning campus and the course you are interested in. To book an online chat session, please visit www.birmingham.ac.uk/livechats

YOUR FUTURE STARTS HERE

We will work with you to ensure you are ready to take the next step in your career, and equipped to demonstrate your achievements. Join us and you will benefit from a range of opportunities to enrich your personal and professional development.

Our dedicated Careers Network offers expert support for international students, including an international careers consultant and a team of international student ambassadors. We will support you in developing the skills you will need to fully prepare for the working world or further academic study, whether this is in your home country or elsewhere.



www.birmingham.ac.uk/ugcareers

www.birmingham.ac.uk/pgcareers

FINDING JOBS IN YOUR HOME COUNTRY

Our Careers Network researches jobs all over the world. We host fairs, workshops and presentations, which are attended by many large, global companies that offer opportunities worldwide. We offer a huge database of information on employers, vacancies and industry trends in a range of countries.

ALUMNI INTERNATIONAL GUIDES

Our alumni guides provide you with country-specific tips on the current labour market, finding and applying for jobs and advice from our alumni, all in one place.

www.birmingham.ac.uk/internationalguides

A GLOBAL NETWORK

Our alumni are an important part of our community. Alumni groups have been set up across the globe and our students benefit from mentoring and advice from our alumni.

Our alumni volunteer with us to share their career experiences with current students, giving you an exclusive insight into their journeys while receiving professional support and advice. From guest lectures and mentoring, to work experience and placements, our graduates are actively encouraged to share their knowledge and skills with the next generation of students.

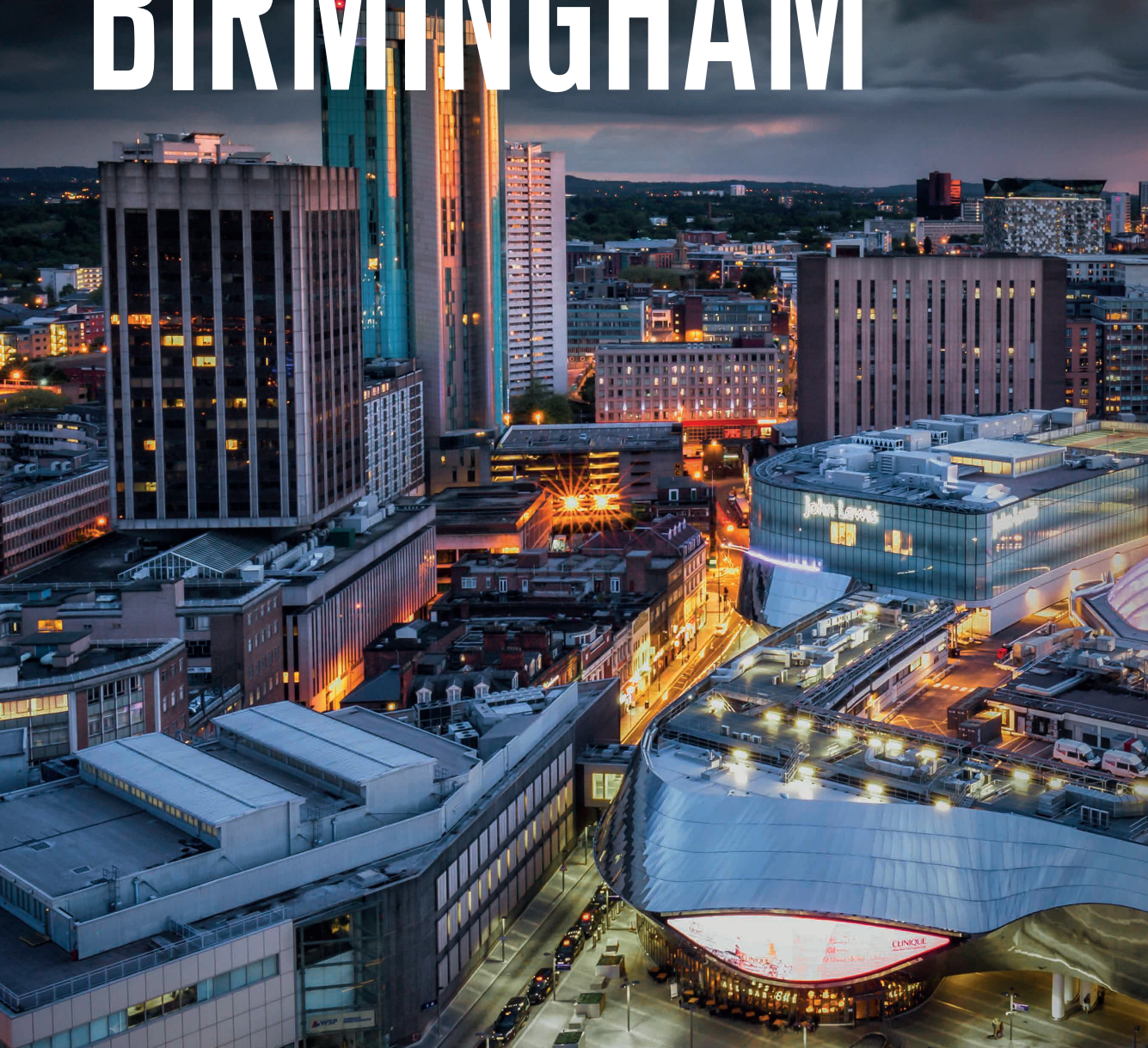
WHAT SUPPORT IS AVAILABLE TO YOU?

We offer many opportunities for you to make the most of your student experience, on and off campus. We can help you to gain experience, develop a broad range of skills and make useful contacts for your future career:

- One-to-one career guidance from college-specific advisors
- CV and job application advice
- An annual programme of careers fairs on campus
- Employer presentations – make contacts and find out more about what companies and organisations have to offer
- Careers workshops to help you with areas such as interview skills and finding work experience
- Graduate mentoring
- Skills training for postgraduates, including real-world business challenges
- Bespoke careers support, events, skills training and careers conferences specifically for postgraduate researchers
- Entrepreneurial skills training – support and advice on setting up your own business
- Online career action planning tools and self-enrolment career development courses – use in your own time to support your career planning
- International Careers Consultant and International Employer Liaison Officer

Each of our colleges also has its own careers and employability team. These teams deliver tailored programmes of careers events for you, and can provide you with advice and guidance services at locations within the colleges.

LIVING IN BIRMINGHAM



Birmingham is a global and modern city with a diverse and friendly community. We are Europe's youngest city, meaning you'll be surrounded by like-minded people. We are a centre for arts and culture, shopping and entertainment and we are also home to the largest financial services and creative sectors outside London. Birmingham offers everything you could want from a city, within easy reach of the beautiful English countryside.

FOOD

WE HAVE MORE THAN
200
RESTAURANTS

SERVING
FOOD
FROM
27
DIFFERENT COUNTRIES

WITH
5 MICHELIN
STARS

CULTURE

600
PARKS AND
OPEN SPACES

OVER **50**
FESTIVALS
EACH YEAR

1.1 MILLION
INTERNATIONAL
VISITORS IN 2018

SPORT

WE WILL HOST THE
**COMMONWEALTH
GAMES IN 2022**

WE HOST THE
**ANNUAL AEGON
CLASSIC TENNIS
TOURNAMENT**

WE ARE HOME TO
**EDGBASTON CRICKET
GROUND** HOSTING
INTERNATIONAL CRICKET

EXPLORE

STRATFORD
HOME OF SHAKESPEARE

IRONBRIDGE
A WORLD HERITAGE SITE

HISTORIC CANALS
FROM OUR INDUSTRIAL PAST

Explore our city: www.birmingham.ac.uk/city



QUEEN
ELIZABETH
HOSPITAL

THE
MEDICAL
SCHOOL

UNIVERSITY
STATION

OUR EDGBASTON CAMPUS

With magnificent architecture and a leafy green estate, our campus provides an inspirational environment for you to live and learn.



**THE
LIBRARY**

**GREEN HEART
NOW OPEN**

Our main campus in Edgbaston is set in 250 acres of parkland with spacious lawns, trees, a lake and significant works of sculpture enhancing its landscape. With its domed red-brick buildings, the campus is rich in heritage and beauty. We have all the amenities of a small town, including shops, bars, cafés, banks, medical and dental surgeries, sports facilities, and even our own railway station.

Our Selly Oak campus, two miles from Edgbaston, is a green 80-acre site with a village atmosphere.

We also have a satellite campus in the historic town of Stratford-upon-Avon (the Shakespeare Institute).

Our School of Dentistry is located at the new Birmingham Dental Hospital at Pebble Mill, which is less than a mile from the main campus. It is the first stand-alone, integrated dental hospital and dental school to be built in the UK for almost 40 years.

Discover our campus:
www.birmingham.ac.uk/campus

**TO SPORT
& FITNESS**

YOUR FACILITIES ON CAMPUS

Our Edgbaston campus is in the middle of one of its most transformational campus redevelopments since the first phase of building in 1909.

Our development projects are creating outstanding new facilities for our students and researchers. These ambitious developments will enhance your teaching and learning, and provide you with an unforgettable University experience.

To date, we have opened our new Library, our Birmingham Sport & Fitness centre and the Collaborative Teaching Laboratory, which you can find out more about on our website.

SPORT & FITNESS

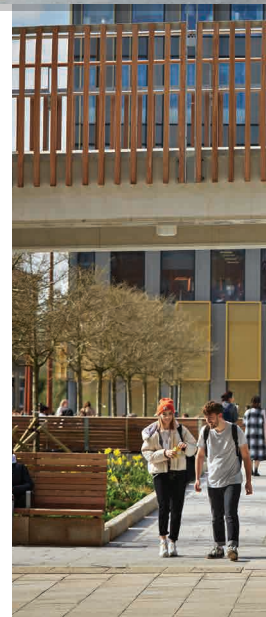


TEACHING AND LEARNING SPACES ON CAMPUS

Opening in 2020, the Teaching and Learning Building will be a hub for education, providing a state-of-the-art teaching and social study space. The building will be IT and audio visual-rich and include:

- Up to 1,000 learning spaces, including individual and collaborative study spaces
- A 250-seater interactive lecture theatre
- Ten seminar rooms for up to 30 students at a time

GREEN HEART



THE HEART OF CAMPUS

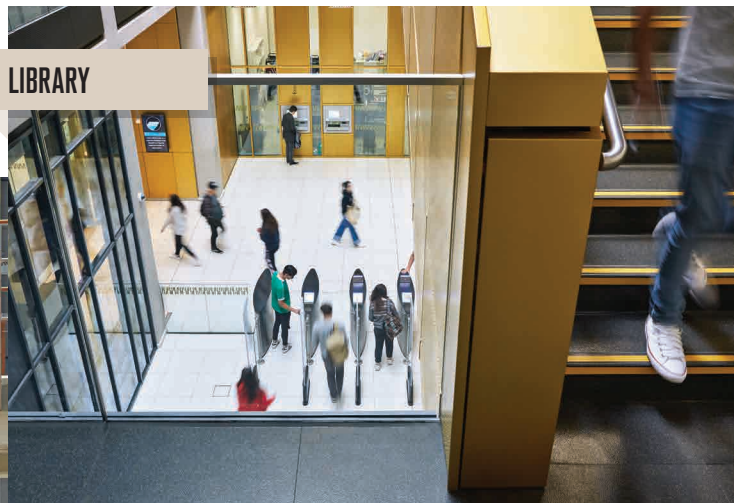
Officially opened in June 2019, the Green Heart is a stunning space for you to work, rest and meet your friends. Measuring over 12 acres, there is plenty of space for performances, socialising, meeting and studying.

SPORT

In 2017, we opened our new £55 million University Sport & Fitness Club. With a 50-metre pool, 200-station gym and six glass-backed squash courts, we have something for everyone. We also have 55 sports clubs for both beginners and athletes.

LIBRARY

Our University Library incorporates more than 2.7 million printed materials and more than 16,000 electronic resources. In our new main Library, there are more than 1,800 study seats. You can access group study rooms or work in the library café. Make use of FindIt@Bham, our online resource to search for physical or electronic copies of your course materials.



THE GUILD OF STUDENTS

The Guild is your students' union and offers plenty of opportunities for fun and socialising on campus.

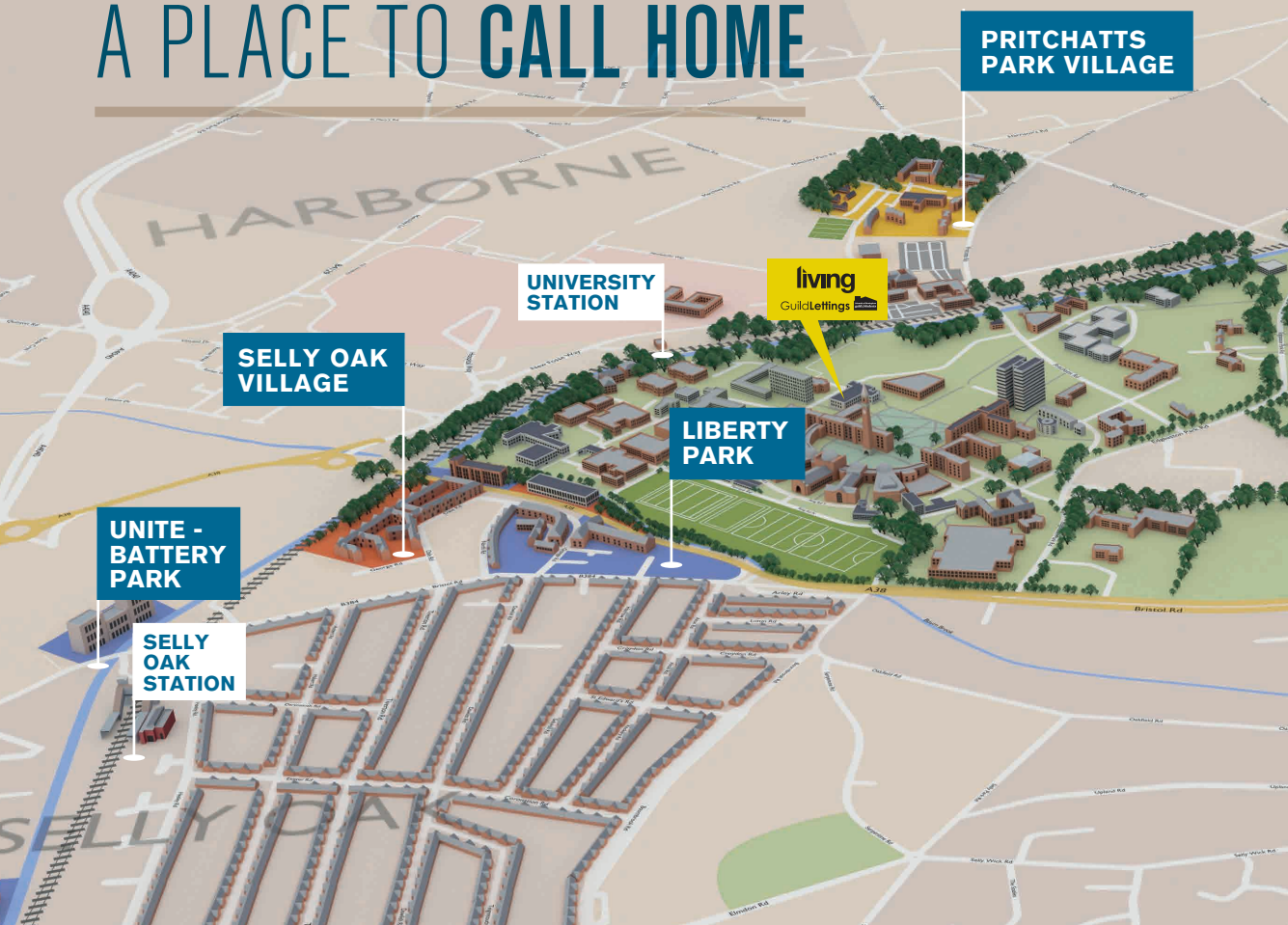
They host fantastic events throughout the year to ensure that you can find the right balance between your studies and social life. We work in partnership to ensure that you have the best possible experience by providing support, advice and entertainment. There are over 300 student groups and clubs for you to join where you can meet new people and have fun www.guildofstudents.com



Find out more about our exciting projects online:
www.birmingham.ac.uk/building



A PLACE TO CALL HOME



Wherever you choose to live during your time with us, our accommodation allows you to enjoy your independence in a safe, welcoming and friendly environment. We have three accommodation villages to choose from, all just a short walk from the main University campus. Each village has its own student community and social hub, meaning you'll feel at home wherever you choose to live.

INTERNATIONAL GUARANTEE SCHEME

We guarantee accommodation to international students during your first year of academic study if you meet our eligibility criteria.

To be eligible for accommodation you must have firmly accepted your offer to study with us and submitted your application online by 31 May 2020 for EU students and 31 July 2020 for international students.



Find our accommodation guides, including living costs and accommodation fees online: www.birmingham.ac.uk/living



Visit our website for more information on the international guarantee: www.birmingham.ac.uk/internationalguarantee



THE VALE VILLAGE

Set in beautiful parkland, the Vale Village is just 20 minutes' walk from the main campus and provides a wide range of accommodation to suit all needs and budgets. The Vale is centred on the Hub, offering a restaurant, café, bar and convenience store. The Hub also provides a space for you to socialise and study so that you can get to know your fellow residents.

PRITCHATTS PARK VILLAGE

This Village comprises studio accommodation for postgraduate and undergraduate students within walking distance (ten minutes) of the University, close to local amenities and transport links to the city centre. Pritchatts Park is also home to our Global Community, which offers an exciting multicultural living environment, allowing you to build friendships with students from around the world.

SELLY OAK VILLAGE

Closest to campus and situated in the thriving student area of Selly Oak, the Village provides plenty of choices for bars, cafés, dining and supermarket shopping. Over 900 students live here, which now includes 178 bedrooms in our newest accommodation, Bournbrook. Adjoined to this building is a sports pavilion, as well as a bar and a café.

LIVING COSTS

EXPENSE	UNIVERSITY ACCOMMODATION	PRIVATELY RENTED SHARED HOUSE
Rent (indicative)	£123 per week	£94 per week (indicative plus a refundable deposit of roughly £300–400 to be paid at the start of the year)
Gas, electricity and water rates	Included in rent	£11 per week
Food/toiletries/laundry	£57 per week	£57 per week
Books, printing, etc	£18 per week	£18 per week
Insurance (indicative)	Included in rent	£2 per week
Clothes and leisure	£40 per week	£40 per week
Local travel	£20 per week	£20 per week
TV licence, phone and internet	£5 per week	£10 per week
Total cost per week	£263	£252
Total for the academic year	£11,046	£10,584

THE VALE VILLAGE



YOUR OFF-CAMPUS OPTIONS

Many of our students choose to find housing in the private sector. A variety of options, including single flats, shared houses and properties for families, can be found in the local area. Popular locations include Selly Oak, Harborne, Moseley and the city centre. The weekly cost of rent ranges from £58–130, averaging at £94, usually excluding utilities.

Find more advice on private accommodation in Birmingham:
www.birmingham.ac.uk/rentingprivately

TRAVELLING TO AND FROM CAMPUS

From bike lanes to canal paths, we are well connected to many areas of our city. As we have our own railway station, University station, you can travel from Birmingham New Street to campus in under eight minutes.

There are also bus routes from the city centre, Moseley and Harborne, which drop you close to the University. The new Birmingham Cycle Revolution is a segregated cycleway that links Selly Oak with the city centre and provides a safe, healthy and green way to reach us and travel around the city.

Wherever you choose to live, you can reach the University easily and quickly.

CITY LIVING



TEACHING QUALITY AND SUPPORT

To enable you to grow as a learner, develop your ideas, expand your opinions and achieve your potential, we will be encouraging you to continue your journey to become the most independent and self-motivated learner you can be.

WHAT STUDY SUPPORT WILL YOU RECEIVE?

To help you settle in as quickly as possible, you will have access to a comprehensive support system to assist, encourage and inspire you.

- In addition to your personal tutor, you have welfare tutors or wellbeing officers based in your school and department who can assist with both academic and welfare concerns
- You will receive individual feedback on your assignments, so you can understand how you are doing and what you might need to do to improve further

- The Academic Skills Centre provides help to boost your academic writing, mathematical and general academic skills, including a workshop programme, online self-help tutorials and individual appointments with specialist advisors

Our learning facilities

We offer you an outstanding learning experience, where lectures and seminars provide opportunities for you to develop your ideas through dialogue and debate with fellow students and tutors.

Using our library, collections and archives, you can choose your mode of study; from traditional methods to using e-resources to interact with collections digitally. Among purpose-built, modern surroundings, including labs that support

both research and teaching, you will work alongside an expert team who can help you to exploit our tools and resources.

At Birmingham, we understand that there are many different learning styles and techniques. To help you tailor your learning experience, we offer a wide range of services and facilities to make our support as personalised as possible. Our state-of-the-art library incorporates an array of facilities to suit different working styles, from group study spaces to silent study rooms.



Our teaching is recognised as the highest Gold standard in the Teaching Excellence Framework (TEF), meaning we deliver consistently outstanding teaching, learning and outcomes for our students and graduates.

We have been recognised for:

- Personalised learning that challenges students alongside pastoral and academic support
- Developing and delivering relevant, research-informed teaching
- Investing in physical and human resources that create an outstanding learning environment
- Excellent physical and digital learning resources

STUDENT SUPPORT



ASK OUR STUDENTS AND ALUMNI

If you have queries or concerns about any aspects of life as a postgraduate student at Birmingham, you can get first-hand information and advice from current students and alumni. Our students and alumni will answer your questions based on their own experience of campus life, their University school or department, the city, the transition to postgraduate study and the support services offered by the University.

For more information on this service, please visit:
www.birmingham.ac.uk/pgask

CAREERS MENTORING

Mentoring is a unique opportunity that allows students to receive one-to-one advice from a professional working in an area they are interested in. This can be a great way to understand how to succeed in this area, be better prepared for the workplace and receive practical advice on employability.

For more information about the Careers Network Mentoring Scheme, visit:
www.birmingham.ac.uk/careersmentoring



STUDENT MENTORS

The Student Mentor Scheme provides support and advice to students living in University accommodation. Student Mentors are available during term-time to support you with any financial, academic, shared living or personal challenges you may be facing.

For more information, please visit:
www.guildofstudents.com/studentmentors

RISE ABOVE THE COMPETITION

Global Challenge is a unique scheme to give ambitious students once-in-a-lifetime opportunities, funded as interns in top global companies, whatever your subject or career interest. Previous placements have included internships at the British Consulate in Chicago,

Museum Victoria in Melbourne, Australia and at GlaxoSmithKline in Morocco, Argentina and Singapore.

Learn more:
www.birmingham.ac.uk/globalchallenge

WE ARE HERE TO SUPPORT YOU

We provide a wide range of student services to meet the needs of our diverse international student community. The Aston Webb Student Hub brings together many services in one place in the Aston Webb Building, at the heart of the campus. The Hub is also online, known as Student Help, with a range of advice resources for you to interact with. Whether you are looking for information, guidance, emotional support or a specific specialist student service, it is a great starting point.

SUPPORTING YOU DURING YOUR STUDIES

We place great emphasis on the wellbeing and safety of our students, offering a range of support services to help you during your studies.

A SAFE CAMPUS

We ensure a safe and welcoming atmosphere on campus. Our security team works 24 hours a day, 365 days a year in partnership with West Midlands Police, covering our Edgbaston and Selly Oak campuses, including our accommodation.

University accommodation is equipped with CCTV and we also have our own Community Police Officer based at the centre of campus.

INTERNATIONAL STUDENT TEAM

Our International Student Team provides you with a network of support, starting before you arrive and continuing throughout your studies. You can access information to guide you through important things to do such as finding and registering with a doctor or opening a bank account.

Advice and guidance is available on a wide range of areas including:

- Applying for your visa/visa support to come to the UK or to continue your studies in the UK
- Bringing your family to the UK
- Living and working in the UK during your studies
- Working after your studies
- Information about social activities
- Information on studying in the UK
- Support in adjusting to life and study in the UK

INTERNATIONAL WELCOME WEEK

To welcome you and help you settle into university life at Birmingham, we run a dedicated, five-day programme in September called International Welcome Week. This begins with an airport collection service and includes tours of the campus and the city, help with, if necessary, administrative tasks such as registering with a doctor, and social events where you can meet other international students from around the globe.

DISABILITY AND WELLBEING SUPPORT

We aim to create an inclusive learning community. If you have a disability (including long-term health conditions, specific learning disabilities such as dyslexia or a mental health difficulty), our Disability Learning Support and Mental Health Service can help you to have the best possible experience at Birmingham. We positively encourage you to tell us if you have a disability so that we can support you. Disclosing a disability will not affect your academic course admission but will ensure that you receive any support or adjustments you require. Our professional team is available to provide you with specialist advice and support to access your academic student life in general, including any disability funding support you are entitled to.

INTERNATIONAL WELCOME WEEK



STUDENT HUB





SUPPORTING YOUR FAITH

The University's Multi-Faith Chaplaincy is for students of all faiths and none. Meet for worship, relax in the Oasis Lounge or see a chaplain for spiritual or religious advice and pastoral counselling. We have Christian, Jewish, Muslim, Hindu and Buddhist chaplains and there are well-established societies and groups. In addition to the facilities on campus, the city of Birmingham has places of worship and prayer rooms for many faiths and religions.

Learn more:
www.chaplaincy.bham.ac.uk

LOOKING AFTER YOUR CHILDREN

If you choose to bring your family to the UK, the University has two nurseries on campus offering a high standard of care and education. The nurseries are very popular, so we recommend you check that places are available as early as possible.

Find out more about childcare options:
www.birminghamdaynursery.co.uk



SUPPORTING YOUR WELLBEING

The Wellbeing Centre aims to enable students to get the most out of their time at university. Should you ever need it, we have a dedicated team of professional counsellors providing individual, group or online support.

The Guild of Students' Advice and Representation Centre (ARC) is also a source of free professional independent student advice. It is a service dedicated to helping you in a wide range of areas from money to academic issues, employment, housing and immigration questions.



INTERNATIONAL STUDENT TEAM

t: +44 (0)121 414 8464

Online queries:

www.studenthelp.bham.ac.uk

or visit

www.birmingham.ac.uk/ist

FUNDING YOUR STUDIES

How much does it cost to attend university?
Find out more about international fees and funding.

TUITION FEES

We charge an annual tuition fee, which covers the cost of your tuition, examination and graduation, as well as access to IT facilities and the library and membership of the Guild of Students. Fees are paid at the start of your programme.

COST OF TUITION

Tuition costs vary according to your chosen programme and your level of study.

Full details of the fees you will pay will be stated in your offer letter.

You can check the latest international fees information on our website before applying: www.birmingham.ac.uk/internationalfees

FEES AND FUNDING ADVICE

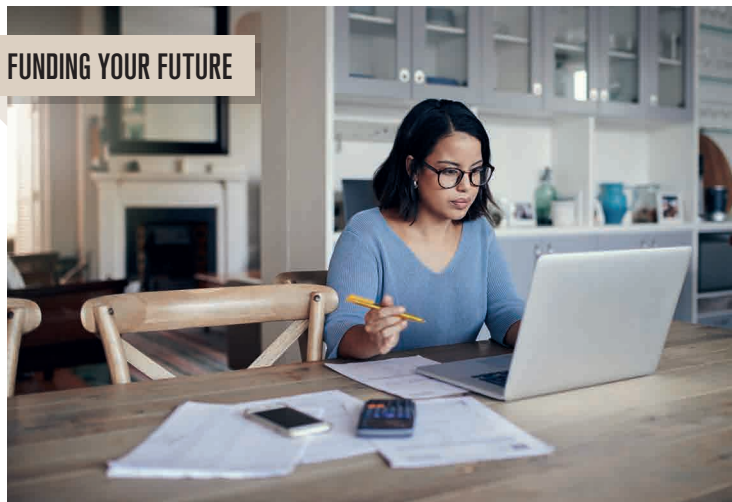
The International Student Team provides support and advice on fees and funding for international students.

They can offer advice about:

- Opening a bank account and typical UK living expenses
- Sources of funding that are available
- Financial difficulties
- Immigration regulations and visa restrictions on working in the UK

www.studenthelp.bham.ac.uk

FUNDING YOUR FUTURE



ASTON WEBB



CHAT TO US ONLINE

You can also book on to one of our online chat events to discuss funding opportunities and any concerns about paying for university.

www.ug.bham.ac.uk
www.pg.bham.ac.uk

SCHOLARSHIPS AND FUNDING OPPORTUNITIES

To reward outstanding achievement and to attract ambitious and talented international students to Birmingham, we are pleased to offer a number of prestigious international scholarships.

Chevening/Birmingham Partnership Scholarships

Our flagship international scholarship is the Birmingham-Chevening Partnership Scholarship, which comprises 16 joint-funded awards covering tuition, stipend and allowances in partnership with Chevening (a UK government scholarship organisation).

Undergraduate Outstanding Achievement Scholarships

We launched this scholarship in 2015 for incoming international students starting bachelor's degrees at the University. Annually the University awards £120,000 of funding through 30–45 tuition fee discount scholarships ranging from £2,500 to £5,000 for students, applying through eligible partner organisations, who can provide evidence of excellence and achievement in their academic or extra-curricular activities

Country-specific scholarships

We also offer a number of country-specific scholarships for international students seeking to join the University. You will need to be domiciled in an eligible country prior to your studies at Birmingham. Examples of these awards include our USA Bachelors and postgraduate scholarships, Canada undergraduate scholarship and Hong Kong postgraduate scholarship.

Subject-specific scholarships

We also have various subject-based scholarships on offer, funded by our individual schools and departments.

Go to: www.birmingham.ac.uk/internationalscholarships

Sponsorship (external scholarship providers), loans and financial aid

The University is an approved institution for hundreds of government ministries and other sponsoring organisations around the world. In 2018/19, we were home to international students with financial sponsorship from over 190 different organisations; from the Bolashak Scholarship in Kazakhstan to CONACYT Mexico and the China Scholarship Council. Information for sponsors can be found here:

www.birmingham.ac.uk/sponsors

We are also approved to offer the USA Federal Direct Loan Programme and also certify USA loans via private lenders. Information on USA and Canada loans can be found here: www.birmingham.ac.uk/internationalloans



For further information and to apply for all scholarships, visit: www.birmingham.ac.uk/internationalscholarships



To search for funding opportunities go to:

www.birmingham.ac.uk/pgfunding

www.birmingham.ac.uk/ugfunding

PART-TIME EMPLOYMENT

The Guild of Students gives you access to hundreds of part-time vacancies should you need to support your living costs. They also provide employment information and advice.

If you want to work while you study, find vacancies and advice from the Guild of Students: www.guildofstudents.com/jsv



For more advice and information, please visit: www.birmingham.ac.uk/internationalfunding

WHICH LEVEL SHOULD YOU CHOOSE?

With over 350 undergraduate programmes and 600 postgraduate programmes, we offer a broad range of subjects and specialisms to enable you to pursue and develop your interests. The University is structured into five colleges, each of which is divided into a number of schools and departments offering a diverse range of programmes. Find out more about each of the levels of study below and decide which qualification is right for you.

FOUNDATION

Our Foundation Pathways provide a route into undergraduate study at Birmingham. A Foundation Pathway is for international students who require a further year of study before beginning an undergraduate degree programme. All pathway students are taught by Birmingham academics and have full access to campus facilities, and successful completion of your foundation year means you will progress to a wide range of our undergraduate programmes.

The Birmingham International Academy (BIA) provides our Foundation Pathways, as well as pre-sessional English programmes for students preparing to study at the University and English support for students who are already at the University. The department is accredited by the British Council for the teaching of English in the UK.

How to apply:

Online application to the University of Birmingham:
www.birmingham.ac.uk/applybia

UNDERGRADUATE

An undergraduate degree is your first degree and you will usually achieve the qualification of a Bachelor of Arts (BA) or Bachelor of Science (BSc). Undergraduate degrees provide knowledge in a subject and typically last for three years. You can then progress to postgraduate study in the UK or internationally.

Applications for undergraduate programmes in the UK are made through an organisation called the Universities and Colleges Admissions Service (UCAS). You make your application online and UCAS forwards the application on to the relevant universities on your behalf. You can apply via UCAS from the September before the year that you want to start your degree.

How to apply:

Online via UCAS: www.ucas.com



ENTRY REQUIREMENTS

Our entry requirements for all of our courses can be found on the relevant course pages.

www.birmingham.ac.uk/bia

www.birmingham.ac.uk/ugcourses

www.birmingham.ac.uk/pgcourses



UNIVERSITY OF BIRMINGHAM DUBAI

You can now receive a world-class, University of Birmingham education in the global city of Dubai. We provide opportunities for you to study on a range of foundation, undergraduate and postgraduate programmes at our new Dubai campus, located within Dubai International Academic City (DIAC).

All of our courses will be taught, examined and accredited to the same recognised high standards as those delivered on our UK campus.

www.birmingham.ac.uk/dubai

POSTGRADUATE

Taught programmes

Postgraduate taught programmes are usually one year in length. They are assessed by a combination of coursework, examination and dissertation and lead to the award of a Masters qualification. If you wish to further your knowledge, prepare for a research degree, gain vocational qualifications or change career, then a taught Masters could be the right programme for you.

We offer a wide range of taught Masters programmes, usually in the form of a Master of Arts (MA) or Master of Science (MSc). However, they can also include programmes such as the Master of Education (MEd), Master of Engineering (MEng) and Master of Business Administration (MBA).

Research programmes

Postgraduate research programmes involve the completion of original academic research. They also include research skills training that will equip you to become an independent researcher, capable of advancing knowledge in your field.

A combined research and taught Masters, such as the MRes, will provide you with both taught modules to increase subject knowledge, and the opportunity to complete a research thesis.

A research Masters, such as the MSc by Research, is a chance to investigate a topic from your undergraduate study in greater depth and is a great way to demonstrate your ability to undertake independent research.

Doctoral degrees, such as the PhD, are the highest level of academic qualification.

How to apply:

Online application to the University of Birmingham:
www.birmingham.ac.uk/pgapply



Build your personalised postgraduate prospectus online:
www.birmingham.ac.uk/pgprospectus

STUDY AT A LEADING UNIVERSITY



HOW TO APPLY

Choosing to study in the UK is an exciting decision. The steps here will guide you through the application process for your chosen course and provide some essential information.

SUPPORTING DOCUMENTS

Whether you are applying for an undergraduate or postgraduate programme, you will need to provide supporting documents with your application. These include:

- Transcript or statement of results of your highest qualification or predicted grades (originals or certified copies are not required at the application stage)
- One or two references
- If English is not your native language, a copy of your IELTS, TOEFL or Pearson Academic English Test certificate
- A copy of your passport personal details page

POSTGRADUATE APPLICANTS

If you require a visa to study in the United Kingdom, you will need to apply by 1 July 2020.

We are not able to consider applications for 2020 made after this date.

BIRMINGHAM INTERNATIONAL SUMMER SCHOOL

To apply to take part in the Birmingham International Summer School programme, visit: www.birmingham.ac.uk/biss

FOUNDATION PATHWAYS

To apply to our September or January pathways please visit our website: www.birmingham.ac.uk/applybia and follow the instructions.

STUDY ABROAD AND EXCHANGES

For information on how to apply to spend time at the University as part of our Study Abroad programme, visit: www.birmingham.ac.uk/incomingstudy



INTERNATIONAL CLEARING

If you are applying for a place on an undergraduate degree programme after 30 June, you can apply through Clearing. For more information, see www.ucas.com/clearing

YOUR OFFER

An unconditional offer means that you have already met the University's entrance requirements and there are no conditions attached to your offer of a place. A conditional offer means that you have not yet satisfied the University's entrance requirements. Your offer letter will detail the requirements still to be met before your place will be confirmed.

Offer holders are advised to fulfil their conditions as soon as possible to allow sufficient time to obtain a visa.

International (non-EEA) students will need to consider and be aware of certain immigration requirements when accepting their offer and when preparing for their student visa.

Visit: www.birmingham.ac.uk/studentvisas

APPLYING FOR AN UNDERGRADUATE PROGRAMME

Apply through the Universities and Colleges Admissions Services (UCAS) between early September (prior to the year you wish to study) and 30 June (in the year you wish to study). European Union applicants need to apply before 15 January.

If you are applying for Medicine or Dentistry, you will need to apply by 15 October.

1 Visit www.ucas.com to apply online – you can apply to up to five choices.

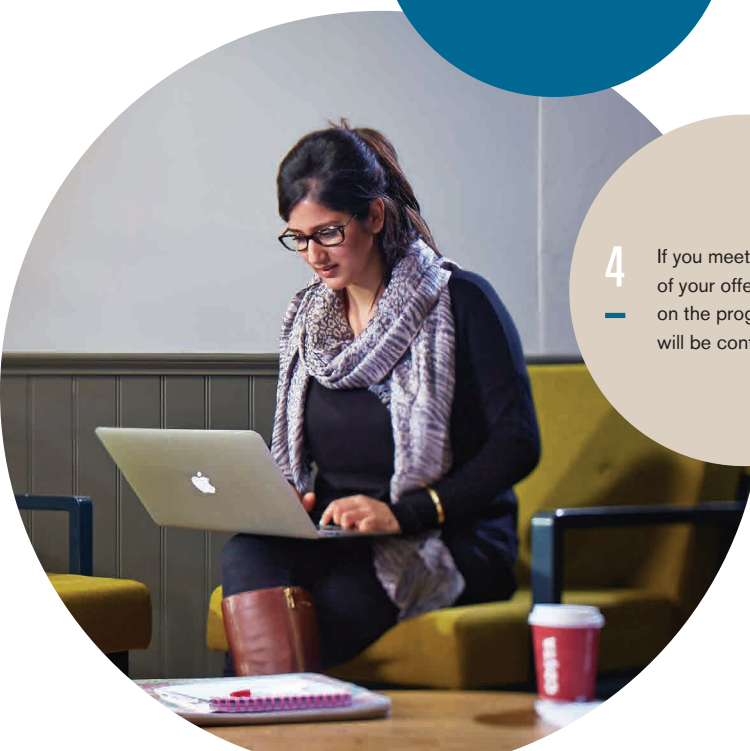


2 UCAS will notify you once a decision has been made on your application. If you are successful, you will receive an offer.

3 Once a decision has been made on all your choices, UCAS will ask you to confirm which two offers (if any) you want to hold while you wait for all your results. You will need to choose your firm choice programme and an insurance, which is your back-up place in case you do not get the grades required for your firm choice.

4 If you meet the conditions of your offer, your place on the programme will be confirmed.

5 For international (non-EEA) students, a Confirmation of Acceptance for Studies (CAS) will be issued at this stage.



APPLYING FOR A TAUGHT POSTGRADUATE PROGRAMME

Formal applications for taught postgraduate programmes are made directly to us using Course finder: www.birmingham.ac.uk/pgcourses

Applying for a taught postgraduate programme usually involves three easy steps:

1

Find your course online:
www.birmingham.ac.uk/pgcourses

2

Consider whether you meet our entry requirements, details of which can be found in the Course finder entry.

3*

Complete the online application form via the course webpage and upload your supporting documents.

* Some taught courses may charge a £50 application fee. For further information, visit www.birmingham.ac.uk/pgappfee



You will need to apply to our Social Work and Initial Teacher Training programmes through UCAS. You can register and apply as soon as the UCAS portal opens (usually in September).



Find out more about applying to postgraduate taught and research courses on our website: www.birmingham.ac.uk/pgapply



APPLYING FOR A RESEARCH PROGRAMME

At Birmingham, there are generally two routes to a research degree. Follow the application steps on this page depending on your preferred route.

APPLYING FOR AN 'ADVERTISED PHD'

You can apply to an 'advertised PhD', which means it is part of an established research project and is usually funded by the University or other funding body. In most cases, the advertised listing will direct you to the correct course page, where you can check requirements.

1

Find and identify your project via our advertised PhDs database: www.birmingham.ac.uk/findaphd

2

Prepare your statement and supporting documents.

3

Submit your application online via Course finder and upload your supporting documents. Identify the project title for advertised PhDs, and potential supervisor(s) for proposed research.

4

Once received, we will consider your application, usually taking four to six weeks. Track your progress and receive our communications via the Applicant Portal.

5

If you are made an offer, this will be either unconditional or conditional. If you accept and meet these conditions, we will confirm your place. For international (non-EEA) students, a Confirmation of Acceptance for Studies (CAS) will be issued at this stage.

APPLY TO PROPOSE YOUR OWN RESEARCH

You can propose your own research rather than join an existing research project. You will need to submit a research proposal to conduct a unique piece of research and identify your proposed supervisor. Funding can be found from other sources such as scholarships, charities, loans and self-finance.

Consider the research area and themes. Begin your supervisor search: www.birmingham.ac.uk/findasupervisor

Consult with a potential supervisor or department. Write your research proposal* using our online advice.



Please be aware that an application cannot be considered until all the necessary supporting documents, such as references, transcript and research proposal have been received.



*A research proposal is a concise and coherent summary of your proposed research. We have provided help and advice for each of the steps of writing your proposal here: www.birmingham.ac.uk/proposalwriting

CONTACT US

Undergraduate study enquiries:

www.birmingham.ac.uk/ug-faqs

Postgraduate study enquiries:

www.birmingham.ac.uk/pg-faqs

Study Abroad enquiries:

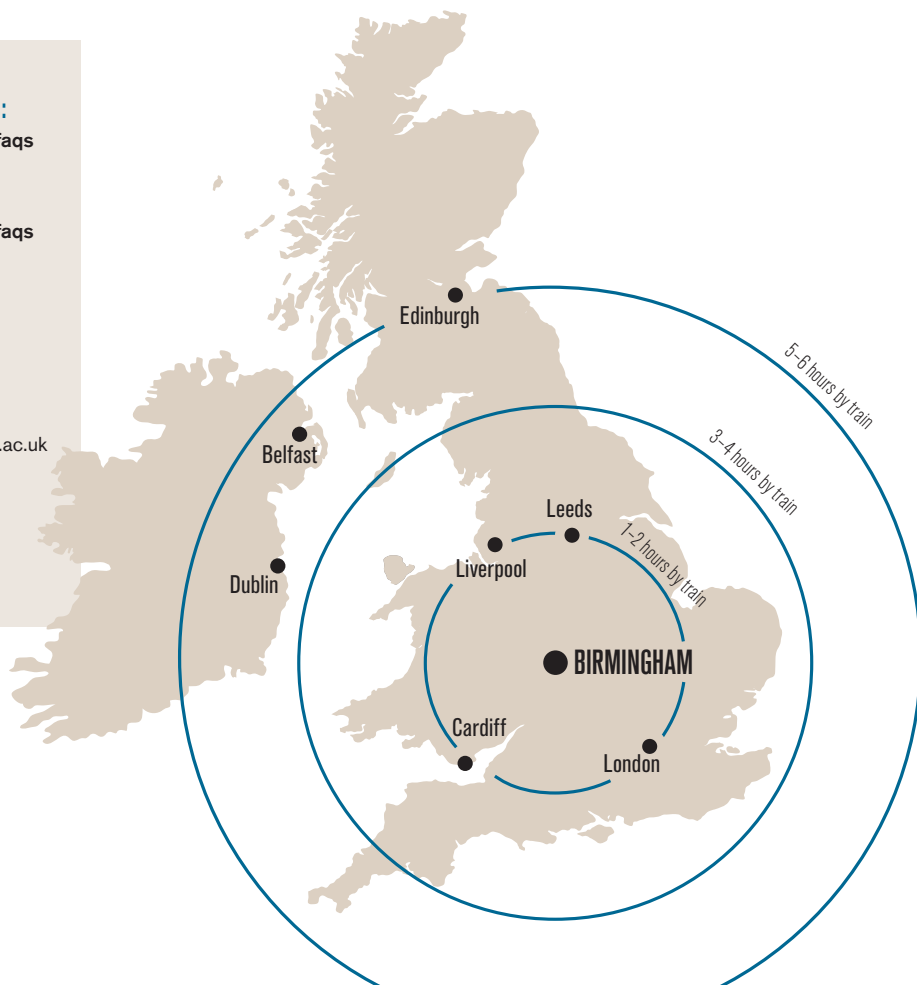
e: studyabroad@bham.ac.uk

Birmingham International Academy enquiries:

e: foundation@contacts.bham.ac.uk

Birmingham International Summer School:

e: biss@contacts.bham.ac.uk



Please note: journey times are for guidance only and are based on the average time taken for off-peak trains travelling between mainland UK city-centre stations.



UNIVERSITY OF
BIRMINGHAM

Edgbaston, Birmingham,
B15 2TT, United Kingdom
www.birmingham.ac.uk



When you have finished with
this prospectus please recycle it

