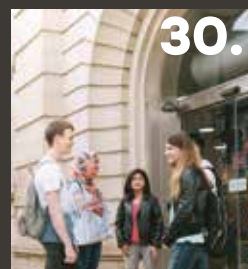




**POSTGRADUATE
AND RESEARCH
PROSPECTUS**

CONTENTS



Introduction

Hallam in numbers	9
5 reasons to study postgraduate	11

Teaching and expertise

Our academics	14
Applied learning	18
Our facilities	22

Supporting your study

Fees and funding	30
Your career	34
Support and advisers	38
International support	41
English language support	44
Accommodation	46

Sheffield: student city

City life	50
Our green spaces	52
Our campuses	54
Student experience	58

Our research degrees

Our research approach	64
Research areas	69
Changing lives	70
How to apply	72
Funding your research	75

Find your course

Entry requirements	80
How to apply	82
Our courses	84
Masters degree apprenticeships	170
A-Z courses index	172

Back pages

Terms and conditions	176
Contact details	177

OPEN DAYS

October 16 2019
February 26 2020
May 20 2020

Book your place and see all opportunities to visit us.

shu.ac.uk/open

If you live outside the UK, we regularly hold virtual events, webinars and chat sessions. Visit **shu.ac.uk/virtual-events** to find out more.

‘The world is changing at a bewildering pace’

PROFESSOR SIR CHRIS HUSBANDS
Vice-Chancellor

The demands on nations, societies, organisations and individuals are ever greater – but so too are the opportunities open to them. Around the globe, more and more people, and more and more governments, need help addressing tough problems that demand serious research and intelligent engagement. That’s why the world needs universities like Sheffield Hallam, prepared to ask – and to answer – the difficult questions, and to create knowledge that turns those challenges into new opportunities, ideas and technologies.

This is a university that sets out to make a difference. We do that by looking hard at the world, and working with an extraordinary range of partners and collaborators to design programmes of study that equip people to do powerful, impactful work. Our postgraduate programmes combine the very latest research with a clear-sighted commitment to apply it to real-world settings. They are shaped to help prepare students for highly skilled employment, for creative problem-solving, and for dealing with complexity. In both our postgraduate taught and research degrees, you’ll be working at the cutting edge, using the latest techniques, ideas, practices and insights to address contemporary issues in your discipline, your professional practice, and the workplace.

Sheffield Hallam University is a special place. I came to work here because of what I saw the University doing: making a profound difference

through outstanding courses, excellent teaching and a host of wider provision, in a vibrant and lively city. This is a fabulous place in which to study and to research, and I am constantly impressed by the commitment across the University to shape futures and to create knowledge that really makes a difference.

Postgraduate study has certainly made a difference to me. I was the first person in my family to stay at school beyond the age of fifteen, and the first to go to university. When it came to my postgraduate years, I wanted a programme that was challenging and stimulating, that would extend my skills and knowledge and that would force me to look at the world in different ways.

Looking back, I can see that is what I got. But deciding which postgraduate programme to study, and which university to study it at, is difficult. There is so much variety, and so many things to take into account. I hope this prospectus gives you the information you need to help you make your choices, and that it gives you a flavour of Sheffield Hallam and what it can do for you.

But please, don’t just read the prospectus. Use all the other resources which are available – including our website and social media – to help you. Best of all, talk to us online or come to an open day. I hope you’ll choose to develop your studies and your career at Sheffield Hallam, because I know what a difference we can and do make.

Professor Sir Chris Husbands is an internationally renowned expert in education policy and practice. He was awarded a knighthood for services to higher education in the 2018 Queen’s Birthday Honours.



JOIN OUR POSTGRADUATE COMMUNITY



JOE STANLEY
President of the Students'
Union Postgraduate
Society

People come to our University from all over the world because they know its reputation as a centre of academic excellence at postgraduate level. And as a result, we have a thriving community of 6,400 postgraduate students – something I would argue is fundamental to your academic and personal development.

The postgraduate community at Sheffield Hallam is at the heart of everything we do. It stimulates our research, provides a forum for discussion, and offers a social space where we can meet and relax. Postgraduate study is very different to undergraduate study and it's important to have people around you who are as passionate about their research as you are.

As president of the Postgraduate Society, I want new students to feel welcomed, informed, but most importantly excited about starting their postgraduate degrees at Sheffield Hallam. Starting another qualification is daunting, and having a strong and vibrant community around you is important if you want to

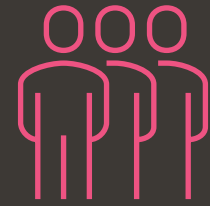
get the most out of what you are studying. There's no need to go it alone!

My advice is to get involved. Join Facebook or WhatsApp groups to find out what's going on in your department. Ask your supervisors and tutors about opportunities to present your work at conferences. I'm biased, but I'd strongly encourage new students to join the Postgraduate Society too. It's free, and there's something for everyone – we put on a range of events to suit all interests, from walks in the Peak District to trips to nearby cities. We are open to everyone, and it's a fantastic way to make friends and build a network of like-minded people.

As I approach the completion of my history PhD and reflect on my time at Sheffield Hallam, I'm grateful for the opportunities available to me and my fellow postgraduates here. We come from a range of backgrounds and all have different motivations – but what unites us is that we all had a great time studying for our degrees.

HALLAM

THE NUMBERS



60,000

students
living
in
Sheffield



£100m

invested in new
facilities over the
past five years



65%

research ranked
internationally excellent
or world-leading,
putting us in the top 5
modern universities*



125

the number
of countries
our students
come from



97%

UK Hallam postgraduate
students in work or
further study six months
after graduating**



83%

student satisfaction
on our postgraduate
courses***

THE NEXT LEVEL

HOW POSTGRADUATE STUDY IS DIFFERENT

If you're finishing an undergraduate degree, developing your career knowledge or returning to learning, you'll find that postgraduate study stretches you, inspires you, and ultimately rewards you. It takes you deeper into your chosen subject and opens up a new world of teaching styles and levels, from one-year taught diplomas to in-depth, self-guided PhD research.

You'll work with smaller and more focused groups than at undergraduate level, and have a closer relationship to your tutors. By the end of your degree you'll be a skilled specialist with a deep working knowledge of your subject area and a standout CV.

Postgraduate taught courses are usually shorter than undergraduate ones, requiring one to two years of full-time study or two to four years of part-time study. Most PhD-level research degrees take between four and seven years, depending on your topic and approach.

There's also greater flexibility at postgraduate level, so it's easier to find a course with the right style, structure and duration for you. Many courses have full-time, part-time and distance learning options – check the listings in the back of the prospectus to see what's available in your subject area.



5 REASONS TO STUDY A POSTGRADUATE DEGREE



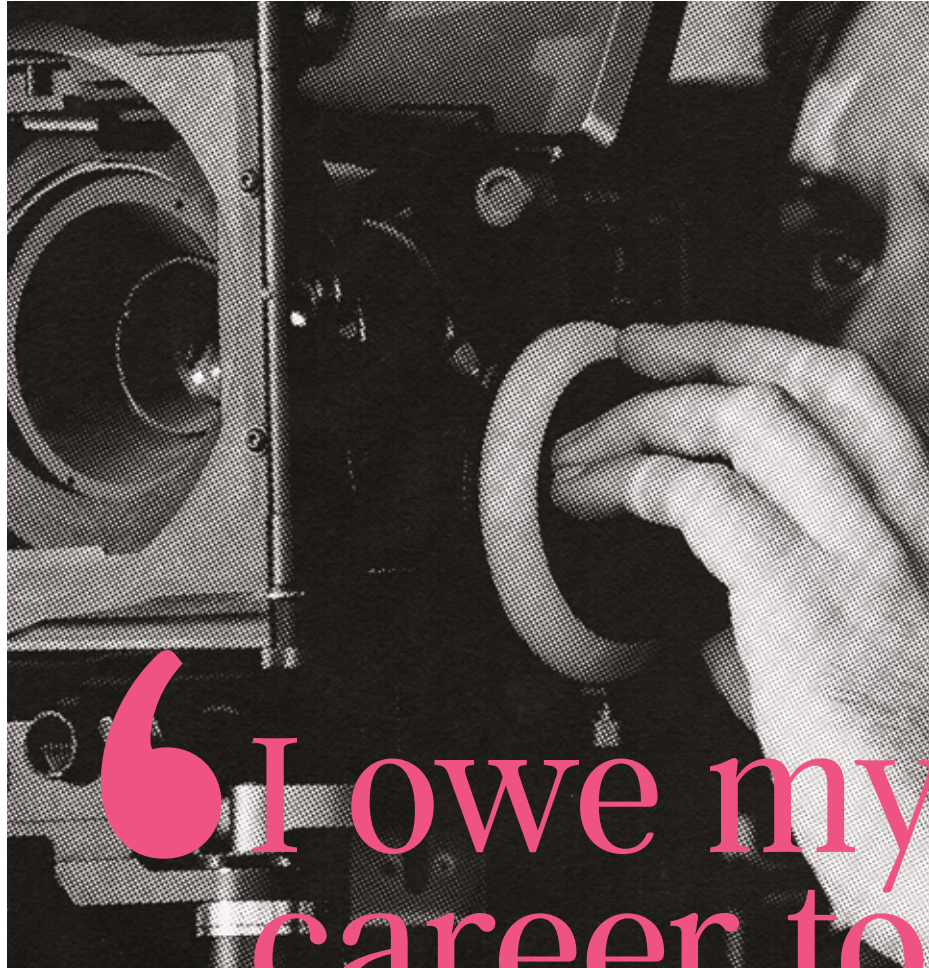
LAURA BURDEN

MA Journalism

 @lburdenmedia

- 1 CHANGE YOUR CAREER**
'A postgraduate course can open the door to a whole new career. And you don't always need to have a degree in the same subject.'
- 2 DO MORE OF WHAT YOU LOVE**
'This is my favourite part of doing a masters – delving deeper into a subject that I'm passionate about, and developing my skills and ideas.'
- 3 STAND OUT FROM THE CROWD**
'Not only will a masters make your CV stand out, it's also a great opportunity to meet people and build professional networks for your future.'
- 4 ACCESS FUNDING AND SCHOLARSHIPS**
'If you're from the UK/EU, you can get a loan of up to £10,906 while you study. And there's a range of scholarships and financial packages wherever you're from in the world.'
- 5 FIT YOUR STUDIES AROUND YOU**
'A masters can be really flexible to fit around your life. Depending on the course, you could study part-time, attend classes for just a few hours a week, or even do the whole course online.'

Laura studied BA (Hons) Media before progressing onto the MA Journalism course. Her dissertation was an analysis of global media coverage of the Cambridge Analytica scandal.



“I owe my
career to
my film
lecturer”

TEACHING AND EXPERTISE

Meet our staff and students
Discover our experts
See our facilities

LEADING THINKERS THAT SHAPE YOUR LEARNING

DR TOM
BASSINDALE

**'I use my research
in my lectures
every day.'**

Dr Tom Bassindale is course leader on the MSc Analytical Chemistry and MSc Pharmaceutical Analysis courses. He conducts research into drug testing, both in sport and with the police.

'I use my research in my lectures every day. Using examples of what I'm working on keeps it up to date and interesting.'

'My postgraduate students also undertake a lab-based research project lasting eight weeks. During this time they work with and among the full-time PhD researchers, often helping them on parts of research problems.'

'I love seeing students learn through tackling a real-world research problem, and the students give great feedback on their experience.'

DR SHALINI
VOHRA

**'My research shows
students how consumer
psychology can be
put into practice.'**

Dr Shalini Vohra is a marketing lecturer and an expert in consumer psychology.

'The way businesses engage with consumers is changing constantly, so it's imperative for students to be aware of current research.'

'I use examples from my own research and experience to show how consumer psychology can be put into practice. It allows students to see the practicality of a concept.'

'My students also have the opportunity to act as research participants. This gives them experience of consumer data collection, preparing them for their own research projects in the future.'

'I owe my career to my film lecturer'



EMILY AXON
MA Filmmaking

My lecturer Colin pushed me to create better films. He works in the industry, so he was able to provide real-world examples and help me build connections outside the course.

Colin has been a huge help and inspiration – I owe my career to him. Since graduating I have worked on the TV series This is England and The Virtues, and

on the 2018 film Journeyman. I'm currently working on a film called Everybody's Talking About Jamie, based on a stage show which started out in Sheffield.

If I reflect on how far I've come, I pinch myself. I've worked very hard to get where I am, but without my time at Hallam I wouldn't be here.

'It has been a pleasure to mentor Emily, both during her time at Hallam and in her early career. All she needed to launch her career was a friend in the industry to help her confidence and skills grow – she now has many friends in the industry!'



Colin Pons course leader for MA Filmmaking

Emily Axon is a freelance filmmaker. She moved from Manchester to study MA Filmmaking. She loved Sheffield so much she decided to stay here after graduating.

APPLY YOUR LEARNING

We want to be the world's leading applied university. That means we believe in combining learning with doing – so that you can hit the ground running in advanced, highly skilled roles.

Applied learning exposes you to current ideas and techniques, and connects your subject knowledge to key workplace skills such as communication, project management and collective decision making.

You'll learn through reading, lectures and seminars, but you'll also put that learning into practice through workshops, placements and real-world projects. At postgraduate level, some of those projects will give you substantial autonomy and responsibility. And in some cases, they could give you experience with big global brands and organisations such as Adidas, Airbus, the United Nations and Sheffield United.

'My students go on placements throughout their course, gaining experience in advising clients in real cases, and at the highest levels of sports law litigation.'

Dr Gregory Ioannidis, senior lecturer in law

 @LawTop20

What form does it take?

Every industry is different, and so applied learning varies from course to course. On our healthcare and wellbeing courses you'll develop your specialist skill working with our NHS partners. On education courses you'll extend your teaching experience, with the opportunity for international school placements on some courses. Postgraduate marketing students have delivered real-life projects for everything from large property firms to wildlife charities, and our MA Games Design students have worked on software for Sony and Sumo Digital.

Find out more about applied learning in your subject area at shu.ac.uk/prospectus.

'My students have access to the University's own game studio. They create games and then release them commercially.'

Dr Jacob Habgood, senior lecturer in games software development

 @jacobmph

'In-depth, practical insight'



ROXANA ANA MARIA TOROPOC
MSc International Business

Itoured Airbus's European manufacturing plant as part of an educational trip to Toulouse. The visit was an amazing opportunity. It improved my knowledge of airline production, logistics, innovation and competition, and gave us in-depth, practical insight we could use in one of our course modules.

We saw the whole process, from the plans on paper to the production of A380 and A350 models on the final assembly line. We also learned how global issues can affect international industries such as aviation. The trip made me re-evaluate my future plans and aspirations.



THE SPACES YOU LEARN IN

We've invested over **£100m** in new facilities in the last **five years**

Think 24-hour libraries, student-designed study areas, international-standard sport facilities and more.

Our newest buildings include an £11m STEM hub and a £30m home for the Sheffield Institute of Education. We won a Royal Institute of British Architects award for our multi-purpose Heart of the Campus hub. And we'll soon be opening a £14m Advanced Wellbeing Research Centre, set to become the most advanced facility of its kind.

Industry-standard equipment

We have the world's largest PlayStation® teaching lab, where computing students create games on PlayStation 4 development kits.

Engineering students use a flight simulator to inform their aircraft designs, and our healthcare students practise treating cancer patients in a 3D virtual radiotherapy room.

Hands-on experiences like these help you constantly apply your learning – so as well as developing specialist knowledge, you also develop the advanced practical skills employers need.



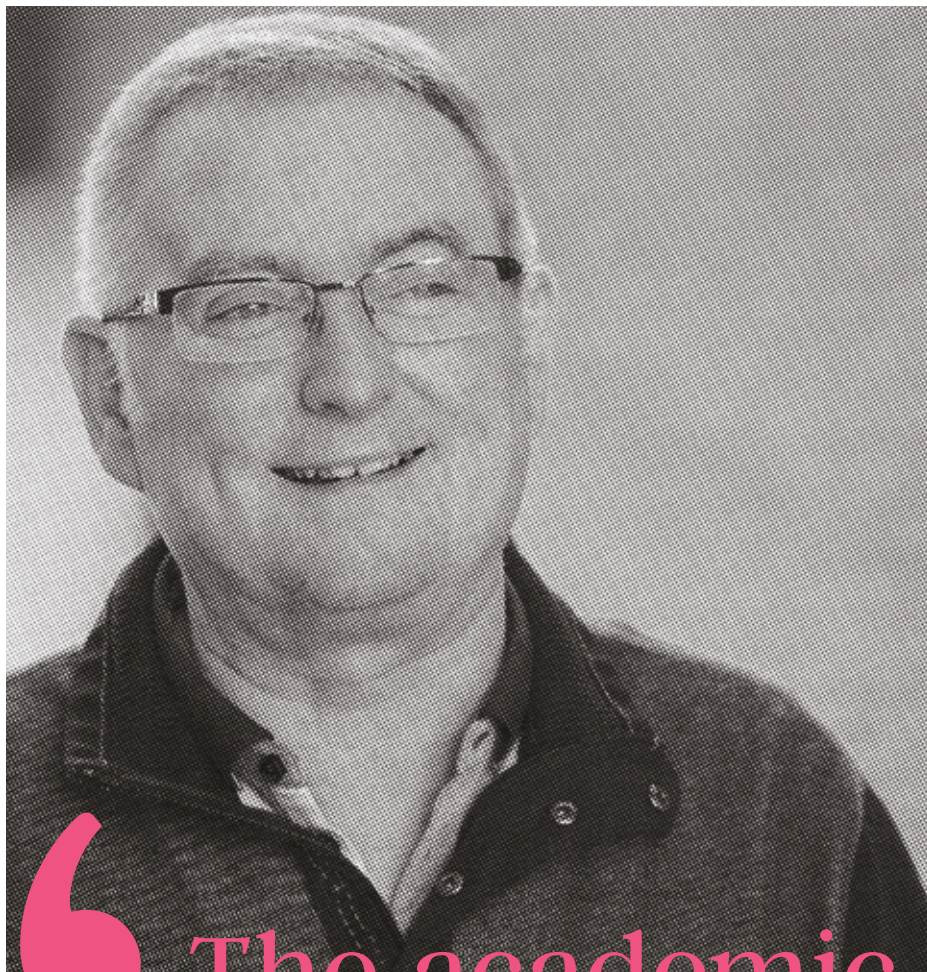
WHAT'S NEXT

Over the next five years we'll be investing £220m in our campuses.

We'll be developing completely new buildings for Sheffield Business School, Social Sciences and Humanities and creating landscaped green spaces and refurbishing many of our existing facilities, including the Students' Union building.

The development will cement Hallam's position at the heart of Sheffield's economy and cityscape, and will deliver modern spaces designed for collaborative, flexible teaching and learning.





“The academic support is excellent”

SUPPORTING YOUR STUDY

Funding your study
Help while you're here
Support for your future

'If you believe in yourself, you can do it'



**ADAM
MAMA-RUDD**
MA Applied Human Rights

Adam Mama-Rudd studied a masters in human rights. He is now an assistant researcher and has worked on a survey in Florida helping people with drug and alcohol addictions.

'I struggled at school – I had issues with authority and as a result I messed up my A-levels. I knew I wanted to help people and I ended up working as a special constable and doing a number of different jobs to earn some money.

'Eventually I did a foundation degree at a college and that gave me the qualifications I needed to start my studies at Hallam.

'From speaking to friends at other universities, I think Hallam takes care of its students better than a lot of other institutions.

'The tutors' doors are always open, everyone is approachable and warm, and it's easy to settle in.

'If you're thinking about doing postgraduate study, my advice is don't let money stop you. If you're passionate about the subject, that's all that matters. Don't worry that you're not clever enough. The lecturers are great and will help get you through. The biggest barrier is self-belief. If you believe you can do it, you can.'



3 MYTHS ABOUT STUDYING A MASTERS AND THE TRUTH

1 'I can't afford to study a masters'

THE TRUTH: Loans of up to £10,906 are available for UK/EU nationals on the majority of our courses.

2 'A masters won't make a difference to my career'

THE TRUTH: You could earn over £5,249 more a year.*

3 'I'll need a first class degree to be accepted onto a masters'

THE TRUTH: You can study many of our courses with a 2:2 or higher.

FUNDING YOUR STUDY

TUITION FEES

Your tuition fee depends on your course and where you are from. For more information, see shu.ac.uk/fees.

UK/EU FEES

EU nationals pay the same as UK students for courses starting in the 2020/21 academic year. Check your course at shu.ac.uk/prospectus for the latest information.

INTERNATIONAL FEES

Non-EU nationals will usually pay international fees.

Postgraduate taught: £13,905–£15,450 for a course.

Full-time MBA: £15,450–£15,965 for a course.

Postgraduate research: £12,875–£17,665 per year, not including bench fees.

Pre-sessional English for Academic Purposes: £310 per week (starting between 1 August 2020 and 31 July 2021).

FUNDING AVAILABLE

UK/EU STUDENTS

At the time of print, the loan amount and repayment details for 2020/21 had not been confirmed. As an indication for the academic year 2019/20, you could borrow up to £10,906 towards your course fees and associated living costs. You don't pay anything back until you're earning over £21,000 a year, and repayments are based on your income, not what you borrowed.

We offer a range of scholarships, including those for Sheffield Hallam graduates. For the most up to date information, see shu.ac.uk/postgraduate-scholarships.

INTERNATIONAL STUDENTS

Our international and EU scholarships cover half your fees for full-time taught postgraduate courses. They are awarded to students who can demonstrate strong academic achievements and act as an ambassador for the University during and after their studies.

We also offer Vice Chancellor's Awards for students from some regions, and take part in schemes including the Commonwealth Shared Scholarship Scheme and British Chevening Scholarships Scheme. For the latest information, visit shu.ac.uk/scholarships.

5

REASONS
YOU CAN
AFFORD
TO
STUDY IN
SHEFFIELD

04

Student discounts

As a student you'll be eligible for discounts in countless shops, cinemas, restaurants and bars across Sheffield.

05

Bargains galore

Sheffield is full of fresh markets and budget supermarkets where you can find cheap and good quality food and household items. Shop around and your food bill could be as low as £20 a week.



01

Affordable living

The cost of living in Sheffield is low compared to other UK cities, and we have some of the best value student accommodation in the country.

02

Working while you study

Want to earn extra cash while studying? Our careers advisers can help you find part-time work, including jobs here on campus. We have 96.5% student satisfaction for our careers and employability service (Welcome Back Survey autumn 2018).

03

Cheap travel

Most bus journeys are only £1.20 with a student card. But it's easy to move around Sheffield without spending anything – you can walk from the train station to City Campus in 5 minutes, or to Collegiate Campus in 25 minutes.



UNLOCK YOUR CAREER POTENTIAL

We work with thousands of businesses globally, giving you unique experiences and the chance to make the contacts in your industry that will further your career.

We work with many major companies and organisations in the private and public sector including • Network Rail • Microsoft • the BBC • SAP • PricewaterhouseCoopers • Oracle • Marks & Spencer • Shell • HSBC • Cisco • the NHS

Professional recognition

Many of our courses are accredited by professional associations. This helps you develop the skills in demand in your industry or sector and build your professional networks. By completing an accredited course, you may gain exemptions from professional examinations, so that you graduate with a professional qualification and can qualify quicker.

Work experience and placements

Whichever course you choose, you will have opportunities to practise applying your knowledge and learning to real projects. Many of our students complete a placement, internship or consultancy project on their course.

Personal career support

Our careers and employability service has a 96.5% student satisfaction rating (Welcome Back Survey autumn 2018).

As well as help finding part-time work, you can access free one-to-one support from our career advisers, in person or by Skype, for up to five years after graduation. They'll help you with

- career planning
- CVs, application forms and interview techniques
- job searches
- developing professional networks

'I planned and pitched a real campaign'



**MUHAMMAD
SAMEER CHOUDHRY**
MA Digital Media Management

Muhammad Sameer Choudhry worked with Objective Creative, a leading B2B marketing agency, as part of his MA Digital Media Management course. The project exposed him to a real brief in a fast-paced agency environment, culminating in a face-to-face client pitch.

'Working with Objective was one of the most important professional experiences I had at university. I helped develop a fundraising campaign for Sheffield Mind, a mental health charity. It gave me a chance to lead a team and work as a social media manager for a real client. I used Google

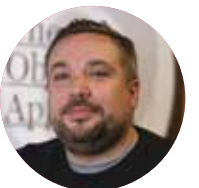
Ads and Facebook Ads Manager in my pitch to show how the budget allocation would be done, and how we'd target different types of ads across Facebook and Instagram.

'Working in an agency environment gave me transferable teamwork, planning and decision-making skills, and really helped to bring out my creativity. The most valuable part was the final pitch, where I presented to Sheffield Mind. It gave me a sense of responsibility and ownership of my work – I was making a real business decision for the client.'



'We're delighted to work with Sheffield Hallam students on live briefs and assignments. We invited them to join the Objective marketing, creative and digital teams to experience work in a busy agency environment. The Objective team also deliver lectures on campus.'

Dan Broadbent
Managing director,
Objective Creative



‘To work at this level, I need a masters’



JORDAN WEBSTER
MSc Applied Sport and
Exercise Science

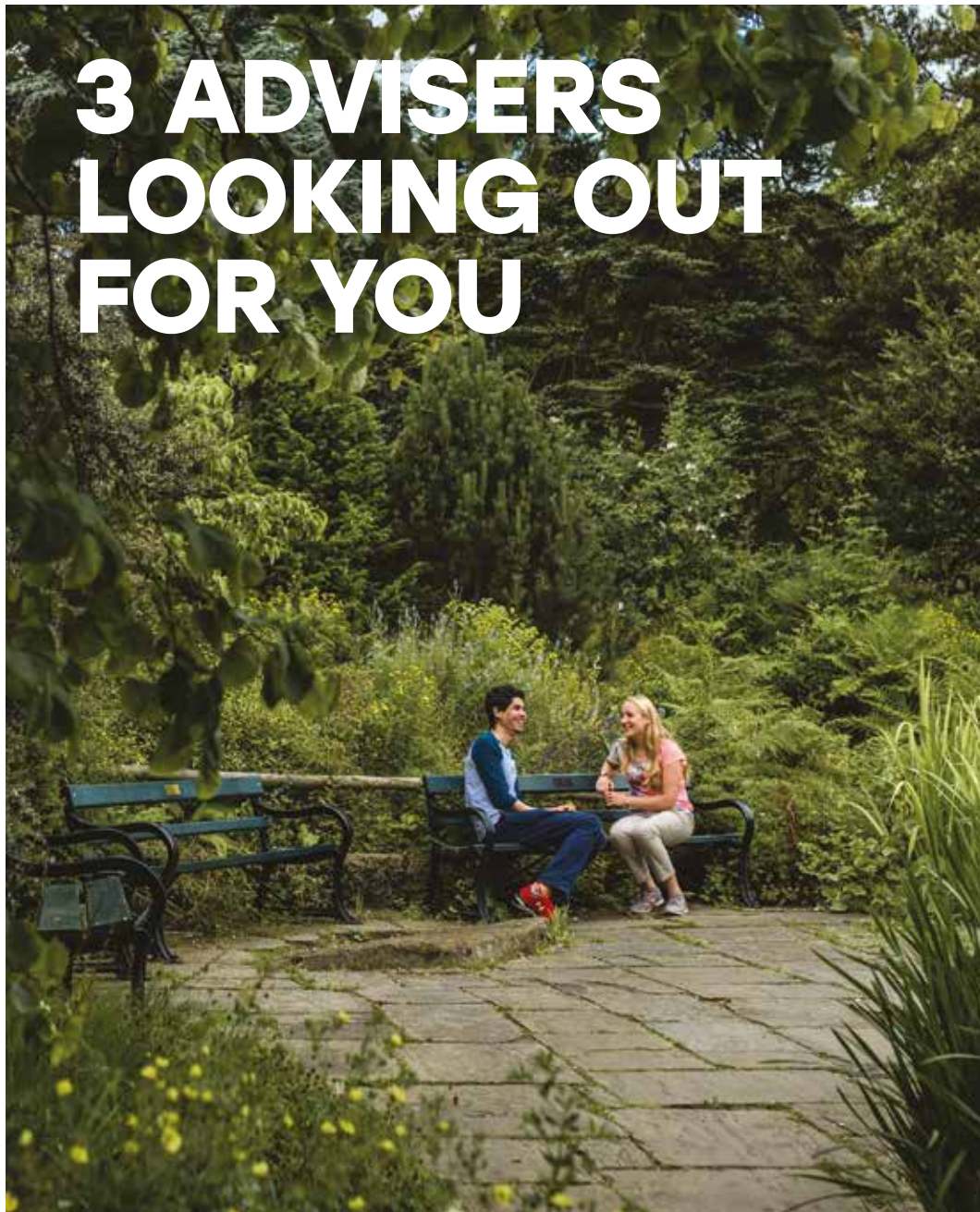
Jordan Webster studied a sport degree at Sheffield Hallam, before progressing onto a masters in sport and exercise science. He is studying the psychological effects of strength and conditioning, such as confidence and mental wellbeing.

‘I study my masters at Hallam, and also work as a graduate strength and conditioning coach. I’m responsible for looking after a lot of Hallam’s sports teams and scholarship athletes.

‘My job is to get them fitter, faster and stronger. But I need to be able to evaluate research and apply it to a gym setting. To do this at a high level, you need that masters degree.

‘I chose Sheffield Hallam for the quality of its lecturing. It’s also given me great opportunities. I did an internship in the USA, spending six weeks coaching athletes in Malibu, California. It gave me a lot more experience for my future career.’

3 ADVISERS LOOKING OUT FOR YOU



We know from experience that students achieve more with the right support. Our advisers are beside you throughout your postgraduate journey, helping you transition to a new level of study and plan for your future.

Employability adviser: Your career

There to help you with job searches, CV writing and interview preparation, and point you towards relevant placements and internships.

Academic adviser: Your performance

There to support your academic journey, helping you achieve your goals and guiding you through options for further study and development.

Student support adviser: Your wellbeing

There to give support and advice on personal, emotional and lifestyle worries, and help you access specialist services when you need them.



Three dedicated advisers

In your first few weeks you'll meet three contacts. One helps with your studies, one provides any personal support or advice you need, and one helps you start your career.

They'll be with you every step of the way, so they'll get to know your needs and interests – giving you a dedicated personal support service from the moment you start right through to graduation and beyond.

Instant answers on the go

Wherever you are on campus, you'll always be near a Hallam Help point – there are 11 in total. Find answers to your questions, get directions, or be guided towards further support. Not on campus? You can also access all our services online, by email and by phone.

Safe spaces

Need to talk about something sensitive? Our support services are fully confidential, and have private rooms for one-to-one consultations.

HOW CAN WE HELP?

Your health and wellbeing

We have a medical centre on city campus. We also have a range of wellbeing services that offer appointments on both campuses, and can help with issues such as anxiety and loneliness. There's also specialised support for sexual violence, harassment and hate crime.

Academic and life skills

The Skills Centre arranges group lessons, workshops and self-study resources to help you plug skills gaps and refine the skills you already have. If you want help with your maths, academic writing or English, this is the place to come.

Your money

If you have any money problems, talk to us and we'll help you. We can provide emergency support, plus advice on how to budget. We can even help you find part-time work for some extra income. See page 31 for more information on financial support.

Support for disabilities

If you have a disability, dyslexia or a long-term physical or mental health condition, you'll have access to a range of learning support. We can make adjustments to your learning, teaching and assessment experience and, where required, help you to access support workers and assistive technology.

International experience

We offer help with your application and visa in more than 40 countries. When you first arrive in the UK you'll get a free pick-up service from Manchester Airport, then throughout your time here you'll have access to social events, trips, English language classes, and a dedicated support team.

Faith and spirituality

Our Multifaith Chaplaincy offers confidential support for uncertainties, ethical dilemmas and life questions. Inside you'll find religious information, quiet rooms and prayer spaces.

Specialist support

We also offer a range of support for students with particular life circumstances, including carers, care leavers, mature students, and people who are estranged from their family.

5 WAYS SHEFFIELD HALLAM MADE ME FEEL AT HOME



CHRISTINE HO

MSc Accounting and Finance

1

Help with my visa application

'The Sheffield Hallam office in Malaysia supported me with my visa application before I left home. They were really prompt at replying to all of my questions about the process.'

2

A free bus from the airport to the University

'The University offers a free airport pick-up service from Manchester Airport when you first arrive in the UK. You book in advance and they'll take you by bus from the airport to Sheffield.'

3

A warm welcome

'When I arrived in Sheffield, I went to the welcome desk and I found out everything I needed to know, from registering with the health centre to opening a bank account.'

4

Activities to help me settle in

'I regularly attend Conversation Club and I'm part of the Culture Connect mentoring scheme, where I was matched with a student from the UK who showed me around the city and University.'

5

Helping me see more of the UK and Europe

'I have been on lots of organised trips. I've visited the Peak District and basically every park in Sheffield. I've also been to Oxford, Manchester and Snowdonia in Wales. I love travelling, and living in Sheffield is great for visiting other UK cities and Europe.'



'Sheffield has become my home away from home. I have made so many friends through the activities organised by the International Experience Team. Everyone is really helpful and friendly and I've liked it here since day one.'



Jodie Marshall
 Founder, A Mind Apart
 theatre company

@jodie_marshall

Sheffield Hallam was the perfect place for me to do my masters alongside running my business in Sheffield. It made studying easier as I had access to everything I needed on my doorstep.

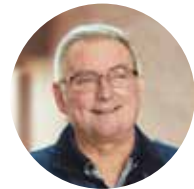
My lecturers allowed me to have necessary extensions when my business occasionally had to

come first, and supported the growth of my business by sharing what I do with their networks in and out of the University.

Not only did I develop skills that have since benefited my career, I also built new networks and contacts.

**'My lecturers
 helped me grow
 my business'**

'The academic support is excellent'



Simon Healy
 Doctorate in Business
 Administration
 Owner, Tide Consulting

I chose to study my DBA at Sheffield Hallam because I had a great experience studying a masters degree here. A DBA is taught in study blocks, so the information needs to be delivered properly to have longevity with the student. I think the lecturers at Sheffield Hallam capture that essence perfectly.

The academic support is excellent. The lecturers are very insightful and challenging. They are always available and respond to queries quickly.

As a result of this course I am encouraged to look at things from a different perspective. I think I'm also beginning to use my time more wisely.

IMPROVE YOUR ENGLISH LANGUAGE SKILLS

If you need help with your English language skills, we can support you. At Sheffield Hallam, we have been teaching English for over 35 years.

Every year, our experienced tutors help more than 1,000 students from all over the world develop their English language skills and progress to their chosen course. All of our English language courses are inspected and accredited by the British Council, with a maximum class size of 16.

We offer five, ten and fifteen-week courses and longer term courses depending on your current IELTS level and the level required for your

postgraduate course. Alongside your degree, we offer free English language classes to enhance and improve your English for academic study. You can also join our free regular Conversation Club as a fun way to develop your conversational English and meet new friends.

If you have any questions about our English language courses, see shu.ac.uk/tesol or contact tesol@shu.ac.uk



CURRENT IELTS SCORE	IELTS REQUIRED BY YOUR DEGREE	RECOMMENDED LENGTH OF STUDY
4.5 (minimum of 4.5 in two skills)	6.0	20 weeks
4.5 (minimum of 4.5 in three skills)	6.0	15 weeks
5.0 (minimum of 4.5 in all skills)	6.0	10 weeks
5.5 (minimum of 5.0 in all skills)	6.0	5 weeks
5.0 (minimum of 4.5 in two skills)	6.5	20 weeks
5.0 (minimum of 4.5 in three skills)	6.5	15 weeks
5.5 (minimum of 4.5 in all skills)	6.5	10 weeks
6.0 (minimum of 5.0 in all skills)	6.5	5 weeks
5.5 (minimum of 4.5 in two skills)	7.0	20 weeks
5.5 (minimum of 4.5 in three skills)	7.0	15 weeks
6.0 (minimum of 4.5 in all skills)	7.0	10 weeks
6.5 (minimum of 5.0 in all skills)	7.0	5 weeks

'I stay in a shared house – it's in a great location, of a decent size and is really nice. My advice would be to know what you're looking for. For example, I had friends who lived in Sheffield, and I wanted to be in the same area as them.'

Phoebe Hares
MSc Psychology



YOUR ACCOMMODATION

If you're moving to Sheffield to study, you can apply for accommodation online at shu.ac.uk/accommodation

Halls of residence

All our university-allocated accommodation is in popular student areas near our campuses. You're never more than a 30-minute walk from your lectures – and in most cases it's less than 10. If you have any special requirements, from single sex accommodation to disabled access, we can help.

All rooms have internet access and standard furniture including a bed, a wardrobe, a desk or workstation and a chair.

You have access to shared kitchen facilities. You can choose an en-suite or shared bathroom. Some residences offer parking and secure bike storage.

You will be guaranteed accommodation and offered one of your preferred halls if your application is received before August. Visit shu.ac.uk/accommodation for more information including videos and photos of our halls of residence, maps and the latest costs.

Private sector housing

We can help you find private sector accommodation which suits your needs – whether it is a flat in the city centre or a shared house.

How much does it cost?

Student accommodation in Sheffield is among the cheapest in the UK. We have a wide variety of options for all budgets, so you can find the right place for you.

Halls of residence cost from £89-£140 a week (including utility bills, insurance and internet).

Commuting to Sheffield?

Sheffield is right in the middle of the UK, with excellent transport links to the rest of the UK. City Campus is right next to both the bus and train stations, and Collegiate Campus is only a 25-minute walk or a short bus ride from the city centre. If you're driving, we offer discounted parking in selected city centre car parks.





“Sheffield
feels like
home now”

SHEFFIELD: STUDENT CITY

Get to know the city
Join in with student life
Meet new people

The urban neighbourhoods you'll get to know and love.



CITY LIFE



ART - FILM - THEATRE

Cultural Quarter

Our main building is in the heart of Sheffield's cultural district. In and around the area are the Lyceum and the Crucible theatres, the Showroom and Curzon cinemas, and the Millennium, Graves and Site galleries.

SHOPPING - LEISURE

Meadowhall

An out-of-town shopping centre packed with big brand shops. Also nearby is Centerentertainment, which has a bowling alley and a Cineworld with IMAX screens. Both are easy to reach by tram, and Meadowhall has a rail link too.

BARS - FOOD - HERITAGE

Kelham Island

An award-winning industrial quarter full of bars, bakeries, night markets and food halls. Traditional pubs like the Fat Cat and Kelham Island Tavern are still going strong, as is the excellent industrial museum.

STYLE - NIGHTLIFE

West Street and Division Street

You'll find some great vintage and alternative clothing shops on and around these two parallel streets. The area is also a nightlife hotspot, with a good mix of restaurants, pubs and late bars.

HIGH STREET SHOPS

Fargate and the Moor

The place to go for your essentials, from Boots to banking. Also here is the Moor Market, whose food stalls range across Europe, Africa, Asia and the Caribbean. It's a good shout for a cheap lunch.

INDEPENDENT SPIRIT

Ecclesall Road and Sharrow Vale

This popular student area near Collegiate Campus mixes chain stores with thrift shops and local one-offs. Eating options range from Chinese to Polish – for even more world food, head south to London Road.

GREEN SPACE

LUNCHTIME STROLLS

Peace Gardens and Winter Garden

Two connected spaces in the city centre. The Peace Gardens have raised lawns, artificial streams and a fountain, while the Winter Garden is a haven of plants and pop-up shops under a soaring glass roof.

SUMMER COLOUR - EXOTIC PLANTS

Botanical Gardens

Students flock here in summer to study outdoors. Wander through the palm house at the top of the hill, or head to the east and west of the grounds to find more secluded spots and hunt for the famous bear statue.

PICNICS - MUSEUM TRIPS

Weston Park

A prime picnic spot with tennis courts, a duck pond and a bright blue bandstand. Weston Park Museum overlooks it all – head inside for displays on local history and wildlife, and a collection of Sheffield paintings.

URBAN RUNS - CITY VIEWS

Norfolk Heritage Park

This 75-acre green space is one of the country's oldest public parks, with wide lawns and avenues shaded by mature trees. It's a great destination for a run from the city centre, with superb views across Sheffield.

NATURE WALKS - TRAIL RUNS

The river valleys

If you want to understand how special Sheffield's setting is, follow the Porter or the Rivelin. They carve out increasingly wild corridors from the city to the hills and moors, flanked by walking and cycling trails.

HIKING - BIKING - CLIMBING

The Peak District

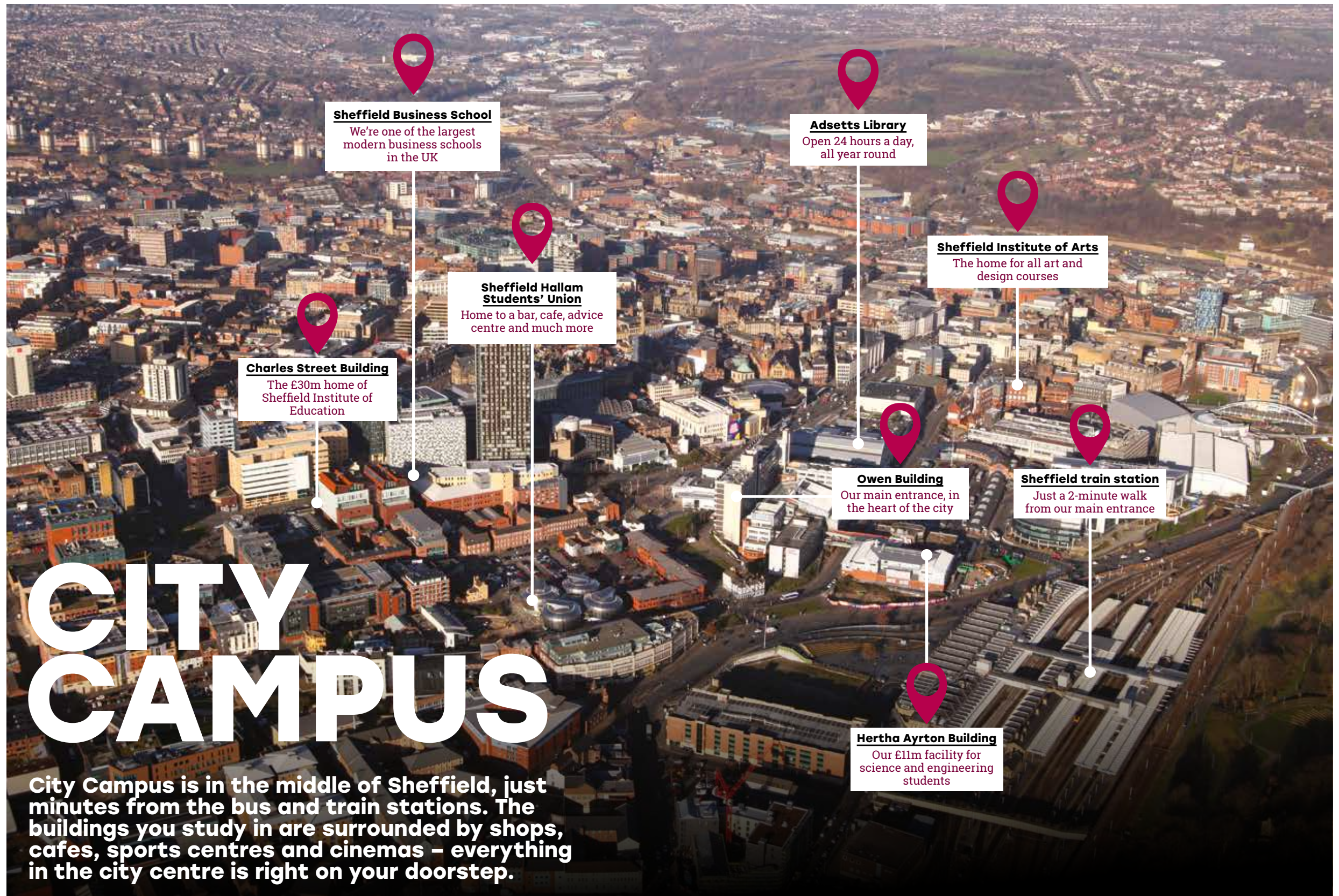
There's a national park on our doorstep. For nearby adventures, ride the bike trails at Lady Canning's Plantation or climb at Stanage Edge. For day trips, hop on a train into the Hope Valley or a bus to Chatsworth.

WHERE IS SHEFFIELD?

We're right in the middle of the UK, with excellent transport links to the rest of the country.



Airports' distance to Sheffield
• Doncaster Sheffield - 25 miles • Manchester - 44 miles • Leeds Bradford - 47 miles
• East Midlands - 53 miles • Birmingham - 88 miles • London Heathrow - 168 miles



COLLEGIATE CAMPUS

Collegiate Campus is in the Ecclesall Road student district, a 25-minute walk or 10-minute bus ride from the train station and City Campus. You're surrounded by shops, cafes and parks, plus a 24-hour library.

Botanical Gardens

One of hundreds of parks and green spaces in Sheffield

Heart of the campus

The £27 million main entrance to the campus

Collegiate Library

Open 24 hours a day, all year round

Ecclesall Road

One of the most popular student areas in the city

Peak District

Sheffield is surrounded by beautiful countryside

Robert Winston Building

Where we train health and social care professionals

MAKE FRIENDS FROM AROUND THE WORLD



Yuvini Hettiarachchi
Founder of the Global Community Society

 @YuviThinks

'There are students from over 125 different countries here. I started the Global Community Society as a way of bringing UK and international students together. The society runs regular events where we find out about different cultures – I've found that food is a particularly good way of bringing people together.'

'I also recommend engaging with the international alumni network. It helps keep Hallam graduates in touch with the University, and each other.'

YOUR UNION

A Union for all students

Our sports clubs, societies and volunteering opportunities are available to all students throughout their time with us. As your goals mature and your skills develop, your Students' Union grows with you providing a social and representative space for you to build networks and get support when you need it. Here's how you can get involved.

VOLUNTEER

There are hundreds of volunteering opportunities available. It's a great way to make a difference, whether you're running writing workshops at local schools or creating a website for a charity.



JOIN A SOCIETY

You can join more than 100 student societies, covering everything from Afro-Caribbean heritage to knitting to Harry Potter. They bring like-minded people together, and helping to run one is a powerful addition to your CV.



PLAY SPORTS

Our community includes almost 40 sports clubs, ranging from football and rugby to ultimate frisbee. So it's easy to get involved in something you love, or have a go at something completely new.



'The Students' Union is committed to supporting you throughout your time at Hallam. We help you apply your learning, develop your skills and gain work experience through volunteering, organising events, and participating in and running societies. We're also a place of democratic engagement, dedicated to representing your academic interests.'

Sheriff Muhammed
Students' Union president



 @HallamPresident

'Sheffield feels like home now'



VIKRAM BHAVSAR
MSc Automation
Control and Robotics

Before I came to Sheffield, I'd been working for a technology firm back in India, and my role was all about automation. I decided to study for my masters abroad to give me a competitive edge – my number one objective was to become more attractive to employers.

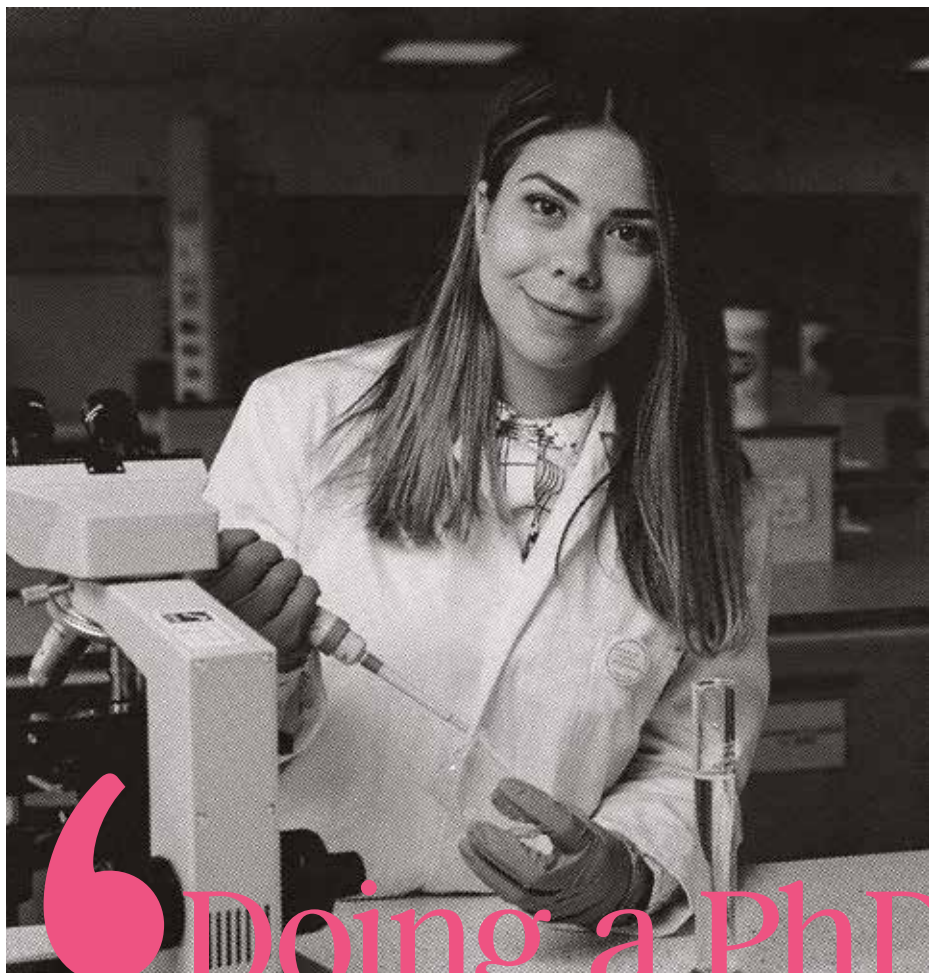
'I decided early on to work as a student ambassador for the International Career Enhancement (ICE) Club, offering support and guidance to other international students. Through the club, I developed a wide network of friends and met people from many different backgrounds and cultures. It helped to give me a wider perspective on the world.'

'Studying abroad, meeting new people and immersing myself in another culture has helped me to grow as a person and enhanced my soft skills. I'm more confident, more independent and a better communicator, and that's all thanks to my time at Sheffield Hallam.'

'I'm now working as an assistant electrical and automation engineer with Primetals Technologies Limited in Sheffield. In my interview they asked all about my dissertation topic, and when I started, I realised they were working with the same technology I had been using in the lab. So my course has definitely had a direct impact on my career! I'm very happy in my new role, and plan to stay in Sheffield. It feels like home now.'



Vikram played an active role in the ICE Club while studying for his MSc, and secured a skilled engineering job in Sheffield after graduating in 2018.



“Doing a PhD
at Hallam
is life-
changing”

OUR RESEARCH DEGREES

Research areas
How to apply
Funding your research

'Research with impact'

PROFESSOR ROGER ECCLESTON

Deputy Vice-Chancellor

At Sheffield Hallam, our approach to research emerges from our values as an institution. We believe in applied learning and cross-discipline collaboration. We believe universities should undertake research that addresses the cultural, economic, social and health challenges facing society today and thereby transform lives.

That's why our research strategy focuses on three high-impact platforms: Enabling Healthier Lives, Building Stronger Communities and Driving Future Economies. These are areas where new challenges demand innovative and boundary-breaking solutions, and where success can drive significant improvements to the lives of individuals and communities the world over, including within our own region.

To achieve that success we're investing in work that creates new multi-disciplinary teams and seizes new opportunities in emerging areas. We know from experience that inspiring, life-changing things can happen when games designers work with physiotherapists, industrial designers work with paediatricians, or sports scientists work with social care professionals, for example.

Our ambition is to magnify that spirit of discovery and collaboration, and embed it in the world's leading applied university – ensuring that, through our teaching, every new contribution to knowledge is passed down to the next generation.

Professor Roger Eccleston is an alumnus of Sheffield Hallam and he has most recently been Pro-Vice Chancellor (PVC) for Research and Global Engagement.

'My research is making a difference'



BECKY CHADWICK

PhD in design, preparation and characterisation of composite polymer membranes

I chose to do my PhD at Hallam because of the wonderful facilities. There's a vast range of equipment and materials to work with and everyone in the labs is working on a diverse range of research, which gives you a wider understanding of the work going on in your field.

It's very different from degree level study. It's more like a job, but with flexible hours and lots of autonomy. The support I receive is fantastic. At this level, you have more of a colleague-to-colleague relationship with staff.

I love the independence and the creativity of studying a PhD. You can very much discover new things together and have the space to play around with your research.

Because you're creating new knowledge you know it's making a difference – I'm excited to see what the results from my work may be and how I will make something work better for people in the future.

Becky's research looks at the composite polymer membranes in outdoor clothing to improve waterproof efficiency and durability.

RESEARCH AREAS

Our research and teaching applies innovative thinking to real-world challenges, and develops solutions that have a real impact on people’s lives.

Biosciences and chemistry

Our research in the Biomolecular Sciences Research Centre includes disease mechanisms, bioanalytical science, molecular microbiology, chemistry and biomaterials. You'll experience an active and stimulating research environment in state-of-the-art laboratories.

Centre for Behavioural Science and Applied Psychology

We develop and evaluate interventions to change behaviour, promote wellbeing, and assess cognitive skills and abilities. We have expertise in a wide range of psychological theory and methods central to how people learn, think and respond to their environment.

Centre for Regional Economic and Social Research

As a leading UK policy research centre, we seek to understand the impact of social and economic disadvantage on places and people, and critically assess policies and interventions targeted at these issues.

Cultural, Communication and Computing Research Institute

Based in the heart of Sheffield's Cultural Industries Quarter, we make connections between the research traditions of art, design, media production, communication studies, computing and engineering through two research centres – the Art and Design Research Centre and the Communication and Computing Research Centre.



Health and social care

Join a vibrant community where you will work closely with experienced academics to develop your knowledge and expertise in one of our key thematic areas, including • cancer and life-limiting illness • public health • wellness and community care • managing mental and physical health • education and workforce transformation • safeguarding.

Helena Kennedy Centre for International Justice

Our research expertise includes applied human rights, clinical and professional education, criminal justice institutions, enabling vulnerable groups, good governance and democracy, and access to justice and the rule of law. Our research in these areas is multidisciplinary and aligned with the overarching themes of social justice and human rights.

Humanities Research Centre

We conduct research in English, history, and stage and screen. Along with specialisms within these disciplines, we collaborate on areas of shared interest including cultural history, gender, imperialism, scriptwriting and adaptation.

Materials and Engineering Research Institute

We use science and engineering research to solve real-world and industrial problems. From materials analysis to robotics and automation, our research and consultancy activities are supported by a large advanced equipment base, ranging from the latest electron microscopes to high-performance computing hardware.

National Centre of Excellence for Food Engineering

We support the food and drink industry by developing new and enhanced facilities, industrial processes and equipment, and creating a knowledgeable workforce with experience of leading engineering systems and facilities.

Natural and Built Environment Research Group

Our research seeks to understand the impact of social, environmental and economic changes on society, and to draw on this understanding to contribute to better design and planning of spaces and places. Ultimately this leads to the creation, management and maintenance of improved built and natural environments.

Sheffield Business School

We're one of the largest business schools in the UK, with over 200 academic staff. As a result, our research covers a wide spectrum of disciplines, including • finance and accounting • management • strategy • marketing • economics • international business and human resource management • tourism events management • food and nutrition.

Sheffield Institute for Policy Studies

We bring together researchers from across the University, providing a space for innovative, interdisciplinary working across our areas of policy expertise, with attention focusing on key cross-cutting issues such as • resilience • austerity • migration • radicalisation • devolution • public sector transformation • and young people.



Sheffield Institute of Education

Our researchers have links to national and international networks, and present and publish their work to academics, practitioners and the general public. We use our research to both inform and influence practice externally as well as across our two teaching departments.

Sociology and Politics Research Group

We undertake research and consultancy in the fields of politics, sociology and social policy. You work closely with researchers in other disciplines including social psychology and education.

Sport and physical activity

Our research takes place across our Advanced Wellbeing Research Centre, Sport Industry Research Centre, Centre for Sport and Exercise Science, and Centre for Sports Engineering Research. Your research will fit within one of the key research themes in the centres including • sports engineering • physical activity and nutritional innovations for health • materials engineering and software development • elite sports science and psychology • sports economics • sociologies of sport and health.

4 WAYS OUR RESEARCH IS CHANGING LIVES

Our lecturers carry out research that makes a real difference to people's lives. You could work on projects like these, gaining the latest knowledge and helping tackle the world's greatest challenges.



1 We're using virtual reality to help rehabilitate injured children

How do you ensure children with hand and arm injuries do their rehabilitation exercises? Our researchers have developed virtual reality computer games that keep them motivated, aiding the recovery process.



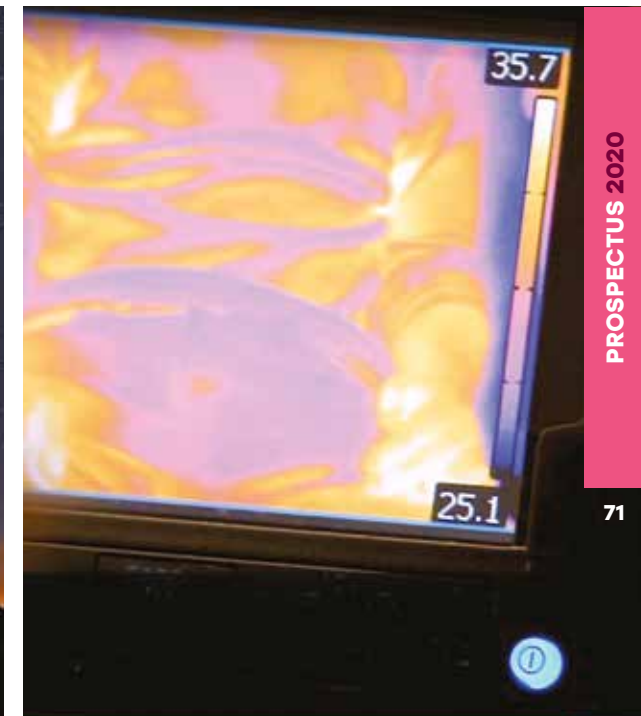
2 We're helping women and girls find justice in India

Our law lecturers are working with Indian police to improve access to justice, rights and protection for female victims of violent crimes such as rape and assault. As a result of our specialist training, crisis centres are being set up in 51 districts.



3 We're helping explore the far reaches of the universe

Our engineering professors have developed a ground-breaking new way of treating the materials that satellites are made of, allowing them to travel further into deep space.



4 We're using thermal imaging to improve post-caesarean care

Our researchers are using thermal cameras to spot signs of wound infection just 48 hours after surgery, allowing clinicians to see whether patients are at risk before they leave hospital.

BECOME A RESEARCH STUDENT

Which research degree is right for you?

Research-based masters degrees

These are suitable if you want to prepare for PhD-level study, or gain subject-specific research skills for your professional development. We currently offer these in English, history and law.

MPhil or PhD

When most people think of research courses, this is what they mean. You critically investigate and evaluate an approved topic, demonstrate an understanding of appropriate research methods, and present and defend a thesis. For the PhD you must make an independent and original contribution to knowledge in your subject.

Doctor of Business Administration (DBA)

This research-based doctorate is ideal for managers and senior professionals who want to pursue their academic, personal and career development goals. You'll have a chance to make a difference and influence how management and professional practice is developed in your specialism.

Doctorate in Education (EdD)

Deepen your understanding of education policy and practice and conduct advanced-level research in education, making an original contribution to knowledge to help advance both your career and the field of education itself.

How to apply

If you want to study a postgraduate research degree with us, contact the research area relevant to your interest.

1

Talk to us

Read the research degree listings at shu.ac.uk/prospectus and contact the relevant research area to see if we can support your research idea.

2

Complete a research proposal

Once you have discussed your research idea, you'll need to write a clear, detailed research proposal, up to 1,500 words long.

3

Send us your application

Send your research proposal, your application form and accompanying documents to the relevant research area.



'I can be independent and rely on myself'



ELLIE CATLIN

PhD on competitive balance in rugby union

The idea behind my research is that every team or player in every game should have a 50–50 chance of winning, but in sport now that's not the case. So I'm measuring that balance or imbalance, using 20 years of points and scores. I want to go to the rugby governing body and say, this is what's happening, and these are the policy implications. By the time I finish I'll have a PhD and the experience to pursue a career as a lecturer if I want to.

There's no way I could do it without the funding. I came from a full-time job in a high-end organisation, and to give that up I needed the support. It also meant I could be independent and rely on myself. I'm the type of person who needs to grow and challenge myself, and this research has given me the opportunity to do that.

Ellie has been awarded a University scholarship to fund her PhD on competitive balance in rugby union.

FUNDING YOUR RESEARCH

Tuition fees for UK/EU postgraduate research students will be aligned to the UK Research Councils' fees, which had not been confirmed for 2020–21 at the time of print. International research fees cost up to £17,655 per year, not including bench fees.

Our PhD scholarships

We offer PhD scholarships across a range of subject areas, including our Vice Chancellor's Scholarships. Find out more information at shu.ac.uk/phdscholarships

Government-backed PhD loans

The UK government has introduced a loans scheme for UK/EU doctoral students. You could be eligible to borrow up to £25,700 for your course and you won't pay anything back until your annual income is over £21,000. Visit shu.ac.uk/doctoral-loan for more information.

Partnerships in doctoral training

We take part in national research initiatives and partnerships which can provide you with scholarship opportunities.

Find your course at shu.ac.uk/prospectus for the latest information.

'I'm teaching the teachers about equality'



STEPHEN CONNOLLY
PhD on inclusion of students that identify as autistic in higher education

After facing discrimination himself, Stephen Connolly decided to research the experiences of autistic students in higher education.

'I'd planned to do teacher training, but I had 17 interviews and every question was about me being autistic. So I decided to become one of the people who teaches the teachers about equality and fairness in education.'

'The theory is that anyone involved in my PhD has to get a positive impact from it. I strive for accessible involvement in the full research process

and firmly believe that autistic people should be the main stakeholders in autism research.'

'My director of studies is really supportive and accessible. He often forwards me insights from events I haven't attended, and he helped me get some guest speaker slots.'

'Like every PhD student, I suffer from imposter syndrome, and that drives me to learn more and more about my field. I feel like I ended up reading everything there was to read, but now it's often me imparting the knowledge to academics, and that's amazing.'



Stephen's PhD aims to empower individual students and improve support on campuses.

'Doing a PhD at Hallam is life-changing'



OANA VOLOACA
PhD on diagnosis of asbestos-linked cancers

Oana Voloaca discovered a passion for research – and for Sheffield – while studying biomedical science at undergraduate level. Her PhD is looking for ways to aid early diagnosis of fatal cancers.

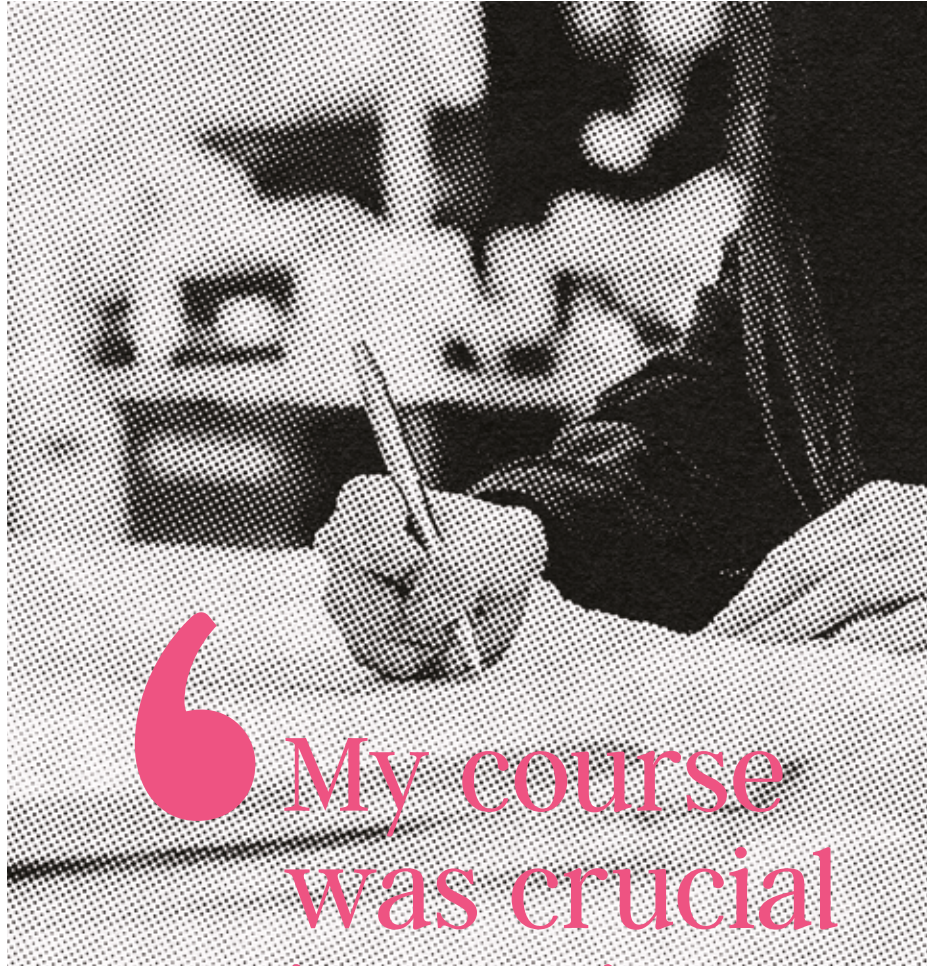
'During my undergraduate degree I worked in Sheffield Hallam's Biomolecular Sciences Research Centre as part of an eight-week studentship. The experience made me want to pursue science in the department, and I was lucky enough to be offered a PhD in cancer research.'

'My project focuses on mesothelioma, a cancer that is usually linked to asbestos exposure. I'm trying to develop a novel method of identifying asbestos fibres in samples, using mass spectrometry imaging. The project also aims to identify new emerging biomarkers of mesothelioma.'

'Being a PhD student at Sheffield Hallam is life-changing. The research community is one of my favourite aspects of it – people are continuously supporting you and pushing you to achieve the best. You get the chance to engage with people across different subjects, share your knowledge with the public and network with the best people in your field.'

'I'm not surprised that so many PhD students remain in Sheffield and the Hallam community after they graduate. I've been living here for a few years now, and it still surprises me – Sheffield has something to offer to everyone, combining music, art, nightlife, sports and green space. It's definitely a student city.'





My course
was crucial

in getting
the job of
my dreams



FIND YOUR COURSE

Entry requirements
How to apply

POSTGRADUATE COURSE ENTRY REQUIREMENTS

You can study most of our masters courses if you have an undergraduate degree graded at 2:2 or higher. And for many of our courses you don't need to have studied the same subject before. To find the individual entry requirements, search your course at shu.ac.uk/prospectus. You can also find the web address for each course in the course listings from page 84.

Experience and previous learning

Recognition of Prior Learning (RPL) is the process of formally recognising the knowledge you have gained through your professional experience and through any previous formal or informal study. You can use this recognition to claim credit points which can reduce the amount of time it takes to complete your qualification at Sheffield Hallam. You might also use this to help gain your place on one of our courses. See if you are eligible at shu.ac.uk/priorlearning

Information for international and EU students

Search for your country at shu.ac.uk/international to find out more about the entry qualifications we accept from your country. You will also need to provide evidence of your English language ability. See shu.ac.uk/selts for more information.

If you need to improve your English language skills, we offer courses of different lengths depending on your current IELTS level and the level required for your postgraduate course. See page 44 for more details. If you need to improve your academic ability, we work in partnership with the Northern Consortium UK (NCUK) which delivers a Pre-Masters Programme in countries around the world to help you prepare for postgraduate study in the UK.

Visit shu.ac.uk/ncuk to find a course near you.



HOW TO APPLY

- 1** Choose your postgraduate course at shu.ac.uk/prospectus
- 2** On your chosen course page, click the 'how to apply' button to submit your application form online.
- 3** Our Admissions team will review your application and contact you with their decision.
- 4** If you have been made a conditional offer, you may need to submit evidence of academic or English language qualifications and/or work experience. Once you have met the conditions of your offer, you will be made an unconditional offer and be advised what you need to do to confirm your place.
- 5** International students will need to pay a deposit, at which point we can issue your Confirmation of Acceptance for Studies (CAS), to support your visa application.
- 6** Once you have accepted your offer, you can apply for accommodation online at shu.ac.uk/accommodation



ADDITIONAL INFORMATION FOR INTERNATIONAL STUDENTS

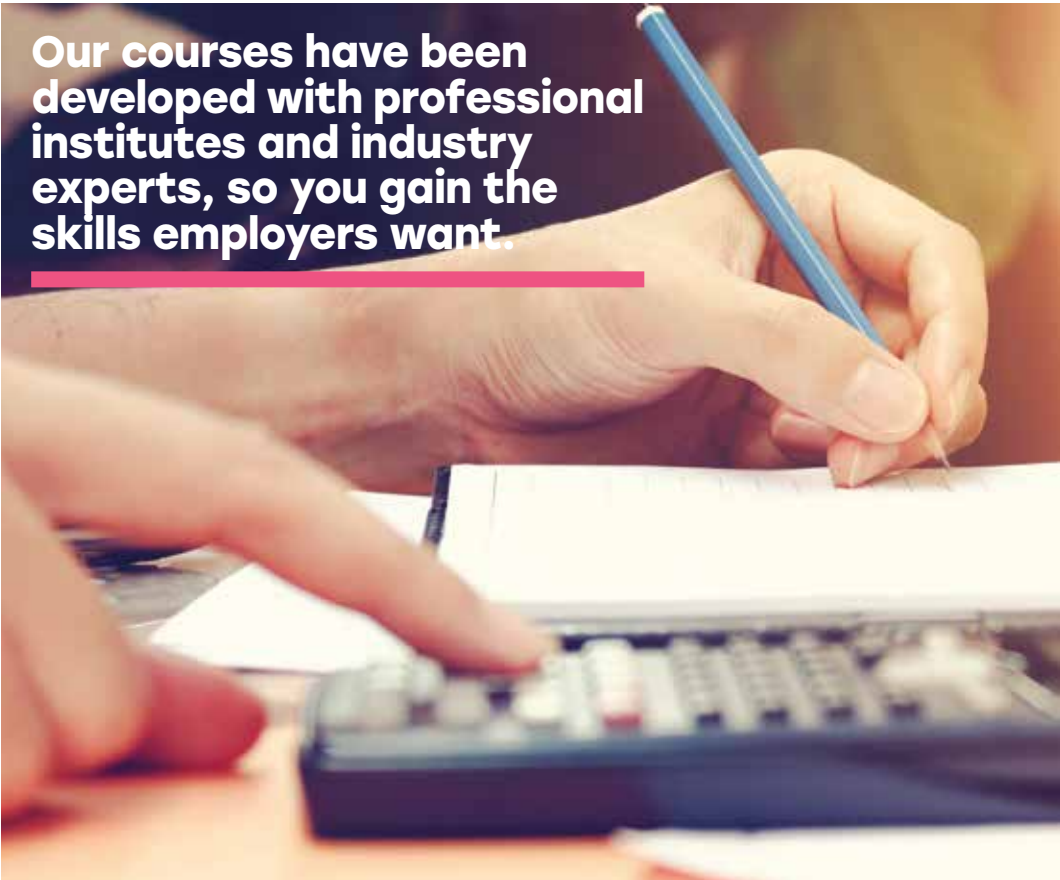
International students can apply for postgraduate courses independently online or with the support of staff in our Sheffield or overseas offices. You can also choose to apply through one of our registered recruitment agents – see shu.ac.uk/international/agents

The International Experience team can also support you with your visa application. Email internationalexperience@shu.ac.uk



We can support you throughout the application process. If you have any questions about applying for any of our postgraduate courses, contact Direct Admissions on +44 (0) 114 225 5555 or email directadmissions@shu.ac.uk

ACCOUNTING, BANKING AND FINANCE



Our courses have been developed with professional institutes and industry experts, so you gain the skills employers want.

**EMPLOYABILITY**

Our excellent links with leading professional bodies and industry give our students the best start to their career.

**EXPERTISE**

We have a vibrant and wide-ranging research and scholarly activity community. Our academics are encouraged to participate in research and scholarly activity in a mutually supportive environment.

Courses in this area are recognised by the following bodies. For accreditation for a specific course, see our full prospectus online.



‘The best thing about the course is that the University provides top e-learning resources such as the Bloomberg software which is perfect for research and analysis on the course.’
Akuha Tor, MSc Banking and Finance

Accounting and Finance MSc

This course meets the growing demand for masters-level professionals in finance and accounting. It is suitable if you are from a general finance background and wish to gain specialist knowledge in accounting and finance, or if you have an accounting background and would like to extend and update your knowledge and skills.

Starts September/January
Full-time – 12/15 months
Part-time – 24/30 months

Accredited by
Association of Chartered Certified Accountants (ACCA)

IELTS requirement
6.0 overall, with 5.5 in all skills

Home/EU fees
Full-time – £8,240 for the course
Part-time – £8,240 for the course

International fees
Full-time – £13,905 for the course

Full details
shu.ac.uk/h13

Accounting and Finance – ACCA fast track route MSc

Convert your ACCA qualifications to a UK masters degree in eight months. This course offers a specialist understanding of accounting and finance and is suitable if you have a general finance or accounting background.

Starts January
Full-time – 8 months

Accredited by
Association of Chartered Certified Accountants (ACCA)

IELTS requirement
6.0 overall, with 5.5 in all skills

Home/EU fees
£4,675 for the course

International fees
£7,150 for the course

Full details
shu.ac.uk/h8

Banking and Finance MSc

Designed with input from professional bodies and employers, this course aims to meet national subject benchmark standards and quality requirements. It is ideal if you want to work in financial markets or banking and desire to progress your career rapidly.

Starts September/January
Full-time – 12/15 months
Part-time – 24/30 months

Accredited by
Association of Corporate Treasurers

IELTS requirement
6.0 overall, with 5.5 in all skills

Home/EU fees
Full-time – £8,240 for the course
Part-time – £8,240 for the course

International fees
Full-time – £13,905 for the course

Full details
shu.ac.uk/h14



‘The course provided me with a solid foundation from which to progress into a career in corporate finance, having gained both a practical and theoretical understanding of the financial world.’
Connor Marshall, MSc Finance and Investment



‘My course is fascinating. We’re given real scenarios of fraud and corporate theft and we look for clues. The lecturers have real-world experience, so they can tell us exactly what happens out there.’

Judy Mwari Ratanya, MSc Forensic Accounting

Finance and Investment MSc

Develop your analytical skills and knowledge of the key products, investment strategies and risks in financial markets. This course is ideal if you want to work in financial markets and investment and want to progress your career quickly.

Starts September/January
Full-time – 12/15 months
Part-time – 24/30 months

IELTS requirement
6.0 overall, with 5.5 in all skills

Home/EU fees
Full-time – £8,240 for the course
Part-time – £8,240 for the course

International fees
Full-time – £13,905 for the course

Full details
shu.ac.uk/h15

Financial Management MSc

Designed for the personal and professional development of graduates who want to work in accounting, strategy, finance and management fields, this course has a real-world focus whilst developing your critical capacity. Your studies benefit from strong links to professional bodies such as the ACCA and CIMA.

Starts September/January
Full-time – 12/15 months
Part-time – 24/30 months

IELTS requirement
6.0 overall, with 5.5 in all skills

Home/EU fees
Full-time – £8,240 for the course
Part-time – £8,240 for the course

International fees
Full-time – £13,905 for the course

Full details
shu.ac.uk/h16

Financial Management – CIMA fast track route MSc

We designed this course for international students who are CIMA passed finalists or qualified accountants. Convert your CIMA qualification to a UK masters degree in eight months.

Starts January
Full-time – 8 months

Accredited by
Chartered Institute of Management Accountants (CIMA)

IELTS requirement
6.0 overall, with 5.5 in all skills

Home/EU fees
£4,675 for the course

International fees
£7,150 for the course

Full details
shu.ac.uk/h25

Forensic Accounting MSc

Prepare for a career detecting financial fraud. You study investigations and dispute advisory services, and increase your knowledge of the legal framework as it relates to the law of evidence. You also study other forensic-related areas such as financial analysis and electronic crime.

Starts September
Full-time – 12 months
Part-time – 24 months

IELTS requirement
6.0 overall, with 5.5 in all skills

Home/EU fees
Full-time – £8,240 for the course
Part-time – £8,240 for the course

International fees
Full-time – £13,905 for the course

Full details
shu.ac.uk/h17

Wealth Management MSc

This course is designed to develop your skills for a career in financial markets, investment banking, fund management or wealth management. You will learn about issues of risk management, regulation, wealth management and fund management, focusing on both individuals and organisations.

Starts September/January
Full-time – 12/15 months
Part-time – 24/30 months

IELTS requirement
6.0 overall, with 5.5 in all skills

Home/EU fees
Full-time – £8,240 for the course
Part-time – £8,240 for the course

International fees
Full-time – £13,905 for the course

Full details
shu.ac.uk/h18



ARCHITECTURE

Prepare for a career in architecture on a course accredited by the Chartered Institute of Architectural Technologists or the Royal Institute of British Architects.



**FACILITIES**

Our extensive architecture facilities include those for lighting, acoustics, environment, testing and air movement, including a Heliodon artificial sky and wind tunnel.

**EMPLOYABILITY**

Our relationships with leading architecture practices give you great opportunities. Graduates have gone on to work for Foster + Partners, Feilden Clegg Bradley Studios, and Cullinan Studios, amongst others.

Courses in this area are recognised by the following bodies. For accreditation for a specific course, see our full prospectus online.



'After working for five years I wanted to further develop my academic understanding of technical and environmental design. The tutors at Hallam were knowledgeable and I found the course content inspiring.'

Duncan Hogg, MSc Technical Architecture

Architecture MArch

Explore diverse and cutting edge forms of architectural practice and collaborate with local and international communities, organisations and architects. You work in practice alongside your studies and take an overseas field trip to give you a global understanding of architecture.

Starts September
Full-time – 24 months

Accredited by
Royal Institute of British Architects
Architects Registration Board

IELTS requirement
6.5 overall, with 5.5 in all skills

Fees
See website for details

Full details
shu.ac.uk/h54

Technical Architecture MSc

Study contemporary technical, environmental, design and implementation issues for architecture. This course prepares you for a career in architecture and it can also help you move into a more architecture-related role if you currently work in building surveying, construction or engineering.

Starts September
Full-time – 12/16 months

Accredited by
Chartered Institute of Architectural Technologists

IELTS requirement
6.0 overall, with 5.5 in all skills

Home/EU fees
£7,420 for the course

International fees
£13,905 for the course

Full details
shu.ac.uk/h22



'This course has provided a platform for me to grow and become a bold practitioner who understands how to create appropriate architectural propositions in unfamiliar contexts and communities.'

Catalina Ionita, MArch Architecture

ART AND DESIGN



Join the largest community of artists, designers, filmmakers, writers and makers outside London. We'll help you create, take risks, and prepare to start your creative career.



'We are exposed to different design directions and approaches, which is an excellent opportunity to broaden our horizons and to accumulate more experience.'
Chen Xiaoxiao, MA Design (Illustration)

Arts and Cultural Management MA

Gain the key skills to work in the cultural sector, and a thorough grounding in cultural policy and theory with practical management skills. Your studies include UK and international arts funding models, heritage and regeneration policies, and using arts in education, health and prison settings.

Starts September/January
Full-time – 12 months
Part-time – 24 months

IELTS requirement
6.5 overall, with 5.5 in all skills

Home/EU fees
Full-time – £9,065 for the course
Part-time – £9,065 for the course

International fees
Full-time – £13,905 for the course

Full details
shu.ac.uk/h34

Design MA

Think differently about design and creatively push boundaries, while developing the skills you need for a career in the arts. You study alongside other design students while specialising in your choice of

- fashion
- graphics
- illustration
- interaction
- interior
- jewellery and metalwork
- packaging
- product

Starts September
Full-time – 12/15 months

IELTS requirement
6.0 overall, with 5.5 in all skills

Home/EU fees
£7,420 for the course

International fees
£13,905 for the course

Full details
shu.ac.uk/madesign

Design MFA

An enhanced version of the MA course, in which you go deeper into your chosen design field and publish your work through an exhibition, patent, journal article, conference paper or installation. You study alongside other design students while specialising in your choice of

- fashion
- graphics
- illustration
- interaction
- interior
- jewellery and metalwork
- packaging
- product

Starts September
Full-time – 20 months

IELTS requirement
6.0 overall, with 5.5 in all skills

Home/EU fees
£4,950 per year

International fees
£9,270 per year

Full details
shu.ac.uk/mfadesign



FACILITIES

You study with hundreds of other art and design students in our home for the arts – a Grade II listed building with specialist workshops and facilities.



EMPLOYABILITY

Our students have worked with big names including Burberry, Diesel, Morphy Richards, Condé Nast and Mynt Design.



‘The teachers see your strengths and encourage you to explore further, refining your skills and cultivating new ones, as you interact with different design fields.’

Catalina San Andres Suarez, MA Design (Interior)

**Fine Art
MA**

An advanced programme of study to explore, refine and develop your artistic practice - this course allows you to participate in activities that help acquire skills. These include a range of practical skills such as painting, sculpture, digital making and drawing as well as writing, curating, exhibitions and others.

Starts September
Full-time – 18 months
Part-time – 32 months

IELTS requirement
6.0 overall, with 5.5 in all skills

Home/EU fees
Full-time – year 1 £4,950, year 2 £2,475
Part-time – £7,420 for the course

International fees
Full-time – £13,905 for the course

Full details
shu.ac.uk/h44

**Fine Art
MFA**

A longer version of the MA course, in which you delve even deeper into subjects including materials-led approaches to research, self-reflection, and critical strategies that enhance skills in the studio.

Starts September
Full-time – 20 months
Part-time – 48 months

IELTS requirement
6.0 overall, with 5.5 in all skills

Home/EU fees
Full-time – £4,950 per year
Part-time – £9,895 for the course

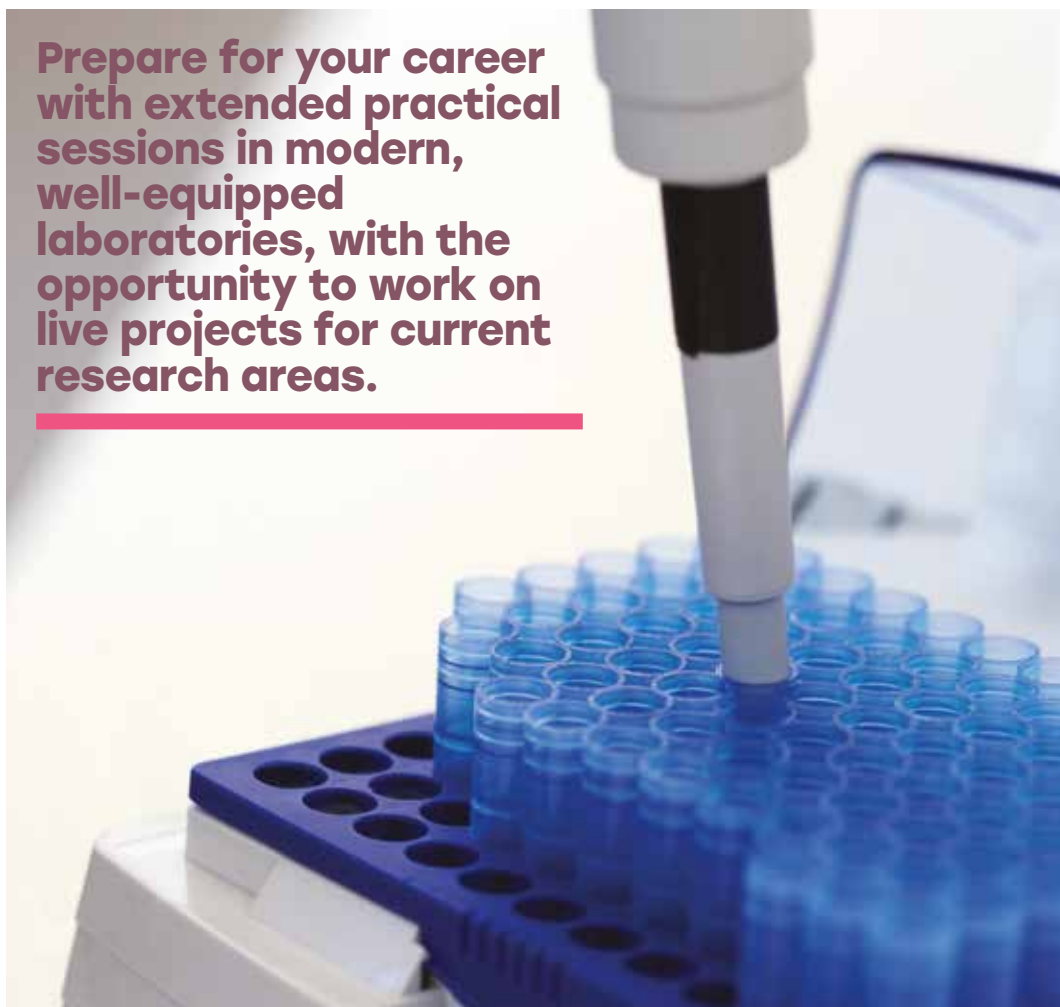
International fees
Full-time – £9,270 per year

Full details
shu.ac.uk/h53



BIOSCIENCES AND CHEMISTRY

Prepare for your career with extended practical sessions in modern, well-equipped laboratories, with the opportunity to work on live projects for current research areas.



FACILITIES

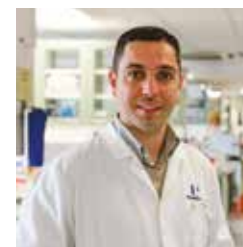
Our labs are equipped with the most up-to-date technologies and industry-standard equipment, giving you unique opportunities to train in cutting-edge techniques.



EMPLOYABILITY

Our courses are informed by advisory boards consisting of employers from the NHS and pharmaceutical and biosciences industries, so you gain the skills employers need.

Courses in this area are recognised by the following bodies. For accreditation for a specific course, see our full prospectus online.



'I have developed many essential and transferable skills that have made me confident in continuing my professional career in science at a very high level.'

Dr Mootaz Mowfak Salman,
MSc Pharmacology and Biotechnology

Analytical Chemistry MSc/MRes

Develop the expertise you need to work as an analytical chemist, alongside renowned active researchers.

You'll undertake hands-on lab work alongside wide-ranging and enriching teaching, graduating with an advanced and much sought-after qualification.

The MRes option includes an extended research project.

Starts September

Full-time – 12 months
Part-time (MSc only) – 24 months

Accredited by

Royal Society of Chemistry (MSc only)

IELTS requirement

6.0 overall, with 5.5 in all skills

Home/EU fees

Full-time – £7,420 for the course
Part-time – £7,420 for the course

International fees

Full-time – £13,905 for the course

Full details

MSc – shu.ac.uk/h63
MRes – shu.ac.uk/h521

Biomedical Laboratory Sciences MSc/MRes

Gain an understanding of human disease, from the biological mechanisms that underpin disease pathology to the diagnosis and treatment of patients. This course prepares you for a career in medical labs or the pharmaceutical industry.

The MRes option includes an extended research project.

Starts September

Full-time – 12 months
Part-time (MSc only) – 24 months

IELTS requirement

6.0 overall, with 5.5 in all skills

Home/EU fees

Full-time – £7,420 for the course
Part-time – £7,420 for the course

International fees

Full-time – £13,905 for the course

Full details

MSc – shu.ac.uk/h74
MRes – shu.ac.uk/h522

Cancer Biology MSc/MRes

Join the fight against cancer on this stimulating, challenging and rewarding course. Led by research-active cancer biologists, you examine the processes underlying the development of malignancy, and discuss methods for diagnosing and treating patients.

The MRes option includes an extended research project.

Starts September

Full-time – 12 months
Part-time (MSc only) – 24 months

IELTS requirement

6.0 overall, with 5.5 in all skills

Home/EU fees

Full-time – £7,420 for the course
Part-time – £7,420 for the course

International fees

Full-time – £13,905 for the course

Full details

MSc – shu.ac.uk/h87
MRes – shu.ac.uk/h527



'The course has helped me to understand the science industry in more depth, and developed my analytical skills. I now feel ready to enter the world of employment.'

Natalie Carter, MSc Analytical Chemistry

**Mass Spectrometry
PgCert**

Learn the fundamentals of mass spectrometry and its application. You study alongside your job, applying the theoretical knowledge to your own role. In the course you design and test up-to-date practical procedures employing mass spectrometry, and gain an in-depth understanding of how to interpret mass spectrometry data.

Starts September
Distance learning – 12 months

IELTS requirement
6.0 overall, with 5.5 in all skills

Home/EU fees
£7,420 for the course

Full details
shu.ac.uk/h98

**Molecular Microbiology
MSc/MRes**

There is an increasing need for highly skilled microbiologists in a range of industries. On this course you gain a detailed understanding of contemporary microbiology, including researching the industrial, commercial and medical aspects of the discipline.

The MRes option includes an extended research project.

Starts September
Full-time – 12 months
Part-time (MSc only) – 24 months

IELTS requirement
6.0 overall, with 5.5 in all skills

Home/EU fees
Full-time – £7,420 for the course
Part-time – £7,420 for the course

International fees
Full-time – £13,905 for the course

Full details
MSc – shu.ac.uk/h92
MRes – shu.ac.uk/h528

**Pharmaceutical Analysis
MSc/MRes**

Develop your practical and analytical skills for a rewarding career in pharmaceuticals, research or academia. You'll learn the techniques and theory required to hit the ground running, graduating with advanced scientific skills and qualifications.

The MRes option includes an extended research project.

Starts September
Full-time – 12 months
Part-time (MSc only) – 24 months

IELTS requirement
6.0 overall, with 5.5 in all skills

Home/EU fees
Full-time – £7,420 for the course
Part-time – £7,420 for the course

International fees
Full-time – £13,905 for the course

Full details
MSc – shu.ac.uk/h68
MRes – shu.ac.uk/h536

**Pharmacology and
Biotechnology
MSc/MRes**

Underpin your professional development in the workplace by applying your knowledge and understanding of biotechnology and pharmacology to specific problems, including research of relevance to pharmacology and biosciences in clinical, industrial and academic environments.

The MRes option includes an extended research project.

Starts September/January
Full-time – 12 months
Part-time (MSc only) – 24 months

IELTS requirement
6.0 overall, with 5.5 in all skills

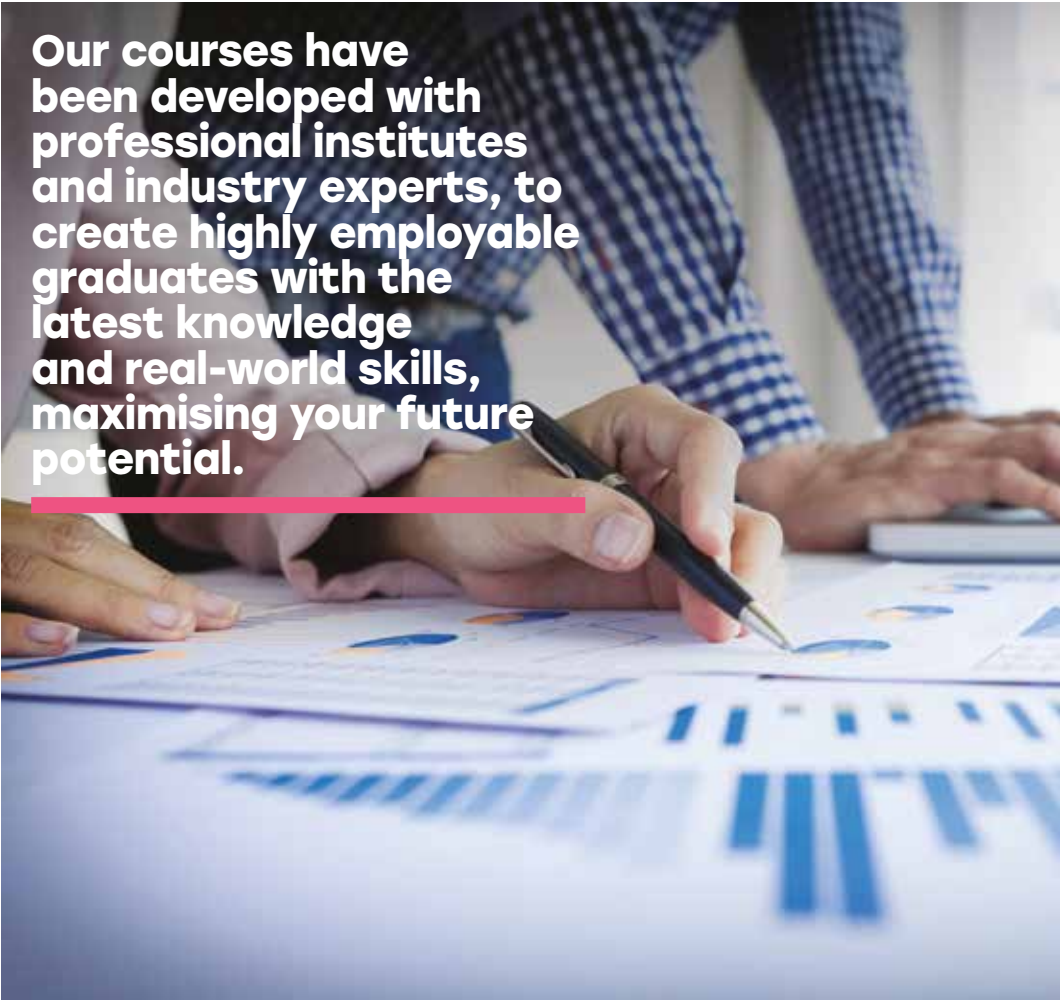
Home/EU fees
Full-time – £7,420 for the course
Part-time – £7,420 for the course

International fees
Full-time – £13,905 for the course

Full details
MSc – shu.ac.uk/h69
MRes – shu.ac.uk/h549



BUSINESS AND MANAGEMENT



Our courses have been developed with professional institutes and industry experts, to create highly employable graduates with the latest knowledge and real-world skills, maximising your future potential.



EMPLOYABILITY

Our strong relationships with organisations and professional bodies give our students excellent opportunities for academic and professional development.



EXPERTISE

We encourage original thinking. Our academic staff carry out consultancy work, initiate research and produce work for journals and textbooks which all contributes to your learning.

Courses in this area are recognised by the following bodies. For accreditation for a specific course, see our full prospectus online.



'The course allowed me to network with people all over the world who work in the industry. Without the course I wouldn't be in the job I'm in now.'

Eleanor Pollard, MSc Human Resource Management

Branding and Consumer Behaviour MSc

Marketers today must be sensitive to customers and understand the importance of brand perception. On this course you learn how to use and apply consumer behaviour theory when developing marketing strategies and discover how brands are constructed and produce value. You'll graduate with a distinctive skillset – perfect for entering a range of rewarding positions.

Starts September
Full-time – 12 months

IELTS requirement
6.0 overall, with 5.5 in all skills

Home/EU fees
£8,240 for the course

International fees
£13,905 for the course

Full details
shu.ac.uk/h462

Business MRes

Develop your knowledge and critical understanding of research theories and methods relevant to business and understand the ethical issues involved. The skills developed, along with the dissertation you complete, form a sound basis to carry out research in a variety of settings or apply for a PhD.

Starts September/January
Full-time – 12 months
Part-time – 36 months

IELTS requirement
6.5 overall, with 6.0 in writing and 5.5 in all other skills

Home/EU fees
Full-time – £7,420 for the course
Part-time – £2,475 per year

International fees
Full-time – £13,905 for the course
Part-time – £13,905 for the course

Full details
shu.ac.uk/h101

Business Administration (Facilities Management) PgCert

In any organisation, facilities management is a distinct discipline that supports the core business relationship between people, process and place. This course is designed for estates and facilities managers who want to improve their skills, leadership, knowledge and experience to advance their career.

Starts October
Part-time – 12 months

IELTS requirement
6.5 overall, with 6.0 in all skills

Home/EU fees
£4,740 for the course

Full details
shu.ac.uk/h109

Coaching and Mentoring MSc

Coaching and mentoring have the potential to bring direct benefits to employees, organisations and stakeholders. If you want to become a capable, confident, professional and ethical coach or mentor, this specialist part-time course is for you.

Starts February
Part-time – 30 months

IELTS requirement
6.0 overall, with 5.5 in all skills

Home/EU fees
PgCert stage – £5,460
PgDip stage – £3,830
MSc stage – £3,505

Full details
shu.ac.uk/h102



‘This course has been completely different to anything I’ve studied before. It’s made me much more creative in terms of business ideas, and the staff have been really supportive.’

Jamie Johnson, MSc Entrepreneurship

Cooperative Leadership and Social Entrepreneurship PgCert

Gain the skills, knowledge and experience to advance your career in social enterprise management and cooperative development. Enhance your leadership skills, identify your strengths and weaknesses, and learn from specialists at Sheffield Hallam University, the Cooperative College, and the Sobey School of Business.

Starts January
Part-time – 15 months

IELTS requirement
6.5 overall, with 6.0 in all skills

Home/EU fees
£4,740 for the course

International fees
£5,150 for the course

Full details
shu.ac.uk/h597

Entrepreneurship MSc

Entrepreneurship is about creating new ideas, new products and services, and entering new markets. At the end of this course, you will be ready to implement your new business idea and take it to the next stage of your entrepreneurial journey.

Starts September
Full-time – 12 months

IELTS requirement
6.5 overall, with 6.0 in all skills

Home/EU fees
£9,890 for the course

International fees
£15,450 for the course

Full details
shu.ac.uk/h103

Human Resource Management MSc

This course is for graduates wanting a career in Human Resource Management, HR managers looking for career development, or people seeking a career change. It aims to develop the specialised skills needed for effective higher-level people management and provides opportunities for applied learning.

Starts September
Full-time – 12 months
Part-time – 18/36 months

Accredited by
Chartered Institute of Personnel and Development

IELTS requirement
6.0 overall, with 5.5 in all skills

Home/EU fees
Full-time – £8,240 for the course
Part-time – £9,065 for the course

International fees
Full-time – £13,905 for the course

Full details
shu.ac.uk/h104

International Business and Human Resource Management MSc

Study diverse topics in business and human resource management from a global perspective. The international emphasis and dual focus of the course ensure that you can quickly adapt to a range of management roles – across industries, sectors and borders.

Course length
Full-time – 12 months

IELTS requirement
6.0 overall, with 5.5 in all skills

Home/EU fees
£8,240 for the course

International fees
£13,905 for the course

Full details
shu.ac.uk/h467

International Business and Marketing MSc

Develop the skills, experiences and attributes that you’ll need as an international business or marketing manager and engage with real-world organisations via live consultancy projects.

Course length
Full-time – 12 months

IELTS requirement
6.0 overall, with 5.5 in all skills

Home/EU fees
£8,240 for the course

International fees
£13,905 for the course

Full details
shu.ac.uk/h468

International Business Management MSc

Develop the skills, competencies and personal attributes relevant to the international business manager. This course prepares you to work in any companies that have international aspects to their operations. It also offers an optional work experience route including a 12-month work placement.

Starts September/January
Full-time – 12/15 months
Full-time with work placement – 24 months

Accredited by
EPAS the European Foundation for Management (EFMD Programme Accreditation System)

IELTS requirement
Work placement route – 6.5 overall, with 6.0 in all skills
Non-work placement route – 6.0 overall, with 5.5 in all skills

Home/EU fees
£8,240 (or £9,065 with work placement) for the course

International fees
£13,905 (or £15,450 with work placement) for the course

Full details
shu.ac.uk/h105

International Human Resource Management MSc

This course focuses on managing human resources in organisations that operate across national borders, and the cross-cultural issues of people management. If you want to develop your career in Human Resource Management at a strategic and international level, this course is for you.

Starts September/January
Full-time – 12/15 months

IELTS requirement
6.0 overall, with 5.5 in all skills

Home/EU fees
Full-time – £8,240 for the course

International fees
£13,905 for the course

Full details
shu.ac.uk/h106

International Marketing MSc

The course is well established and enjoys an excellent reputation for producing postgraduate students who can add value to international businesses and are well equipped to succeed in the fast-moving world of marketing and business. This course offers an optional work experience route including a 12-month work placement.

Starts September/January
Full-time – 12/15 months
Full-time with work placement – 24 months

IELTS requirement
Work placement route – 6.5 overall, with 6.0 in all skills
Non-work placement route – 6.0 overall, with 5.5 in all skills

Home/EU fees
£8,240 (or £9,065 with work placement) for the course

International fees
£13,905 (or £15,450 with work placement) for the course

Full details
shu.ac.uk/h290



‘I love the way we learn and then discuss our thoughts. It generates many ideas and views from the class which will be applicable to my future career.’

Panisa Jarukornvasin, MSc International Marketing

COMPUTING

Our practical computing courses are continually refined to reflect the changing needs of the computer and IT industry, giving you the knowledge, skills and experience required for careers in this dynamic sector.



EMPLOYABILITY

We have long-standing partnerships with companies including 3Squared, Cisco, Microsoft, Oracle, the Servelec Group and Sony Entertainment Europe, giving you a great start in your career.



FACILITIES

We're constantly updating our facilities to give you the latest equipment. Our dedicated computing laboratories include specialist equipment in networking, computer games and multimedia.

Courses in this area are recognised by the following bodies. For accreditation for a specific course, see our full prospectus online.



'My course allows me to experience how projects are run in a real-life work environment, which has helped build my confidence for when I start my career.'

Grace Ogunleye,
MSc Information Technology Management

Advanced Computer Networks MSc

This is a technical course aimed at networking enthusiasts with a passion for the high-end technologies of enterprise networks. An attempt at the latest Cisco Certified Network Professional Routing and Switching (CCNP R&S) exams is included in the fee.

Starts September

Full-time – 12 months
Part-time – 24 months

IELTS requirement

6.0 overall, with 5.5 in all skills

Home/EU fees

Full-time – £7,420 for the course
Part-time – £7,420 for the course

International fees

Full-time – £13,905 for the course

Full details

shu.ac.uk/h127

Big Data Analytics MSc

Data analysis is essential for companies to understand their customers better, develop new products and cut operational costs. This course has been developed in consultation with our industry contacts to create graduates who can become data scientists capable of working with the massive amounts of data now common to many businesses.

Starts September

Full-time – 12 months
Full-time with work placement – 24 months
Part-time – 36 months

IELTS requirement

6.0 overall, with 5.5 in all skills

Home/EU fees

Full-time – £7,420 for the course
Part-time – £7,420 for the course

International fees

Full-time – £13,905 for the course

Full details

shu.ac.uk/h128

Computing MSc

This course is designed for graduates of other subjects who want to change to a career in the lucrative IT industry. It covers a range of topics and presents you with a variety of optional modules to enhance skills in the area of your choice.

Starts September

Full-time – 12/24 months
Part-time – 36 months

IELTS requirement

6.0 overall, with 5.5 in all skills

Home/EU fees

Full-time – £7,420 for the course
Part-time – £7,420 for the course

International fees

Full-time – £13,905 for the course

Full details

shu.ac.uk/h130



'The lecturers have been incredibly supportive, both when providing technical expertise and also when giving personal guidance. I would highly recommend this course.'

Callum Rooney, MSc Big Data Analytic



‘The course provides you with the knowledge you need to work within the games industry, while helping you make useful contacts. I’ve also published a PSVR game in the process.’

Sergio Alapont, MSc Games Software Development

**Cyber Security
MSc**

Ideal if you are already working in an IT environment or you wish to specialise in information security, the BSI ISO27001 accreditation provides an important industry element to this course and helps you gain certifications to progress your career.

Starts September

Full-time – 12 months
Part-time – 36 months

IELTS requirement

6.0 overall, with 5.5 in all skills

Home/EU fees

Full-time – £7,420 for the course
Part-time – £7,420 for the course

International fees

Full-time – £13,905 for the course

Full details

shu.ac.uk/h470

**Games Software
Development
MSc**

Study low-level hardware architectures for optimisation, including the novel architectures of games consoles and how to exploit them. Gain project management techniques including the stages of game production and the structure and operation of the industry to help you identify and target a suitable career path.

Starts September

Full-time – 12 months

Accredited by

Accredited by ScreenSkills (the Creative Industries’ Sector Skills Council) and TIGA (The Independent Game Developers Association)

IELTS requirement

6.0 overall, with 5.5 in all skills

Home/EU fees

£7,420 for the course

International fees

£13,905 for the course

Full details

shu.ac.uk/h131

**Information Technology
Management
MSc**

This course allows you to get ahead in this ever-changing and expanding field. We help you to think about technology and the ways it can be effectively implemented, with cutting-edge facilities and expert tutelage. You’ll graduate ready for an exciting position in the IT industry.

Starts September

Full-time – 12 months
Full-time with work placement – 24 months
Part-time – 36 months

IELTS requirement

6.0 overall, with 5.5 in all skills

Home/EU fees

Full-time – £7,420 for the course
Part-time – £7,420 for the course

International fees

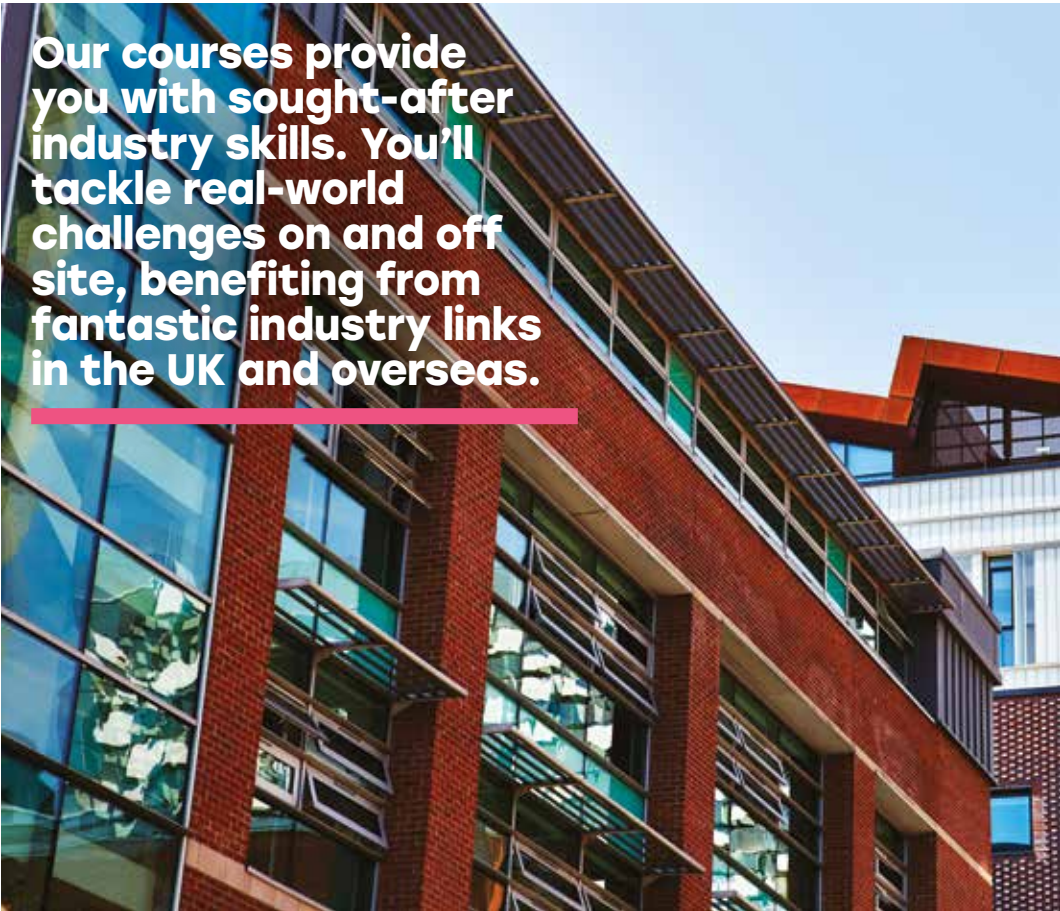
Full-time – £13,905 for the course

Full details

shu.ac.uk/h133



CONSTRUCTION, REAL ESTATE AND SURVEYING



Our courses provide you with sought-after industry skills. You'll tackle real-world challenges on and off site, benefiting from fantastic industry links in the UK and overseas.

**EMPLOYABILITY**

We have great links with employers such as BAM, LSH, RLB and Turner & Townsend, giving you great opportunities for employment.

**EXPERTISE**

Our teaching staff have extensive industry experience, from a range of professional disciplines.

Courses in this area are recognised by the following bodies. For accreditation for a specific course, see our full prospectus online.



'I have made a number of valuable industry contacts. The course is held in high regard with employers, and I secured a job as a building surveyor before the end of the academic year.'
Simon Hollis, MSc Building Surveying

Building Surveying MSc	Construction Project Management MSc
Accredited by the Royal Institution of Chartered Surveyors and the Chartered Institute of Building, the course has a hands-on focus as you work with students from other disciplines including quantity surveying, construction project management and real estate.	This is a fast-track conversion course for first degree holders from unrelated disciplines and existing practitioners who want to become Chartered Surveyors through the Royal Institution of Chartered Surveyors and Chartered Institute of Building.
Starts September Full-time – 12 months Part-time – 24 months	Starts September Full-time – 12 months Part-time – 24 months
Accredited by Royal Institution of Chartered Surveyors and the Chartered Institute of Building	Accredited by Royal Institution of Chartered Surveyors and the Chartered Institute of Building
IELTS requirement 6.0 overall, with 5.5 in all skills	IELTS requirement 6.0 overall, with 5.5 in all skills
Home/EU fees Full-time – £9,065 for the course Part-time – year 1 £3,025, year 2 £6,045	Home/EU fees Full-time – £9,065 for the course Part-time – year 1 £3,025, year 2 £6,045
International fees Full-time – £13,905 for the course Part-time – £13,905 for the course	International fees Full-time – £13,905 for the course Part-time – £13,905 for the course
Full details shu.ac.uk/h141	Full details shu.ac.uk/h142



'It was a really easy decision for me to stay on at Hallam, after the positive experience I had at undergrad. My main focus was on the management side of things, which has taught me to be more efficient in my work.'
David Ajala, MSc Construction Project Management



‘My course helped me to develop my adaptability and learn how to keep a competitive edge in my future career.’
Hallie Ngyen, MSc Real Estate

Quantity Surveying
MSc

Develop the skills required to be a quantity surveyor for private or public clients or construction organisations. We aim to produce graduates who meet the academic, professional and ethical standards required by the Chartered Institute of Building and the Royal Institution of Chartered Surveyors.

Starts September

Full-time – 12 months
Part-time – 24 months

Accredited by

Chartered Institute of Building and the Royal Institution of Chartered Surveyors

IELTS requirement

6.0 overall, with 5.5 in all skills

Home/EU fees

Full-time – £9,065 for the course
Part-time – year 1 £3,025, year 2 £6,045

International fees

Full-time – £13,905 for the course
Part-time – £13,905 for the course

Full details

shu.ac.uk/h143

Real Estate
MSc

An intellectually challenging and professionally relevant course, this degree gives you the skills you need to operate in the property industry. You'll graduate able to meet the academic, professional and ethical standards required by the Royal Institution of Chartered Surveyors.

Starts September

Full-time – 12 months
Part-time – 24 months

Accredited by

The Royal Institution of Chartered Surveyors

IELTS requirement

6.0 overall, with 5.5 in all skills

Home/EU fees

Full-time – £9,065 for the course
Part-time – year 1 £3,025, year 2 £6,045

International fees

Full-time – £13,905 for the course
Part-time – £13,905 for the course

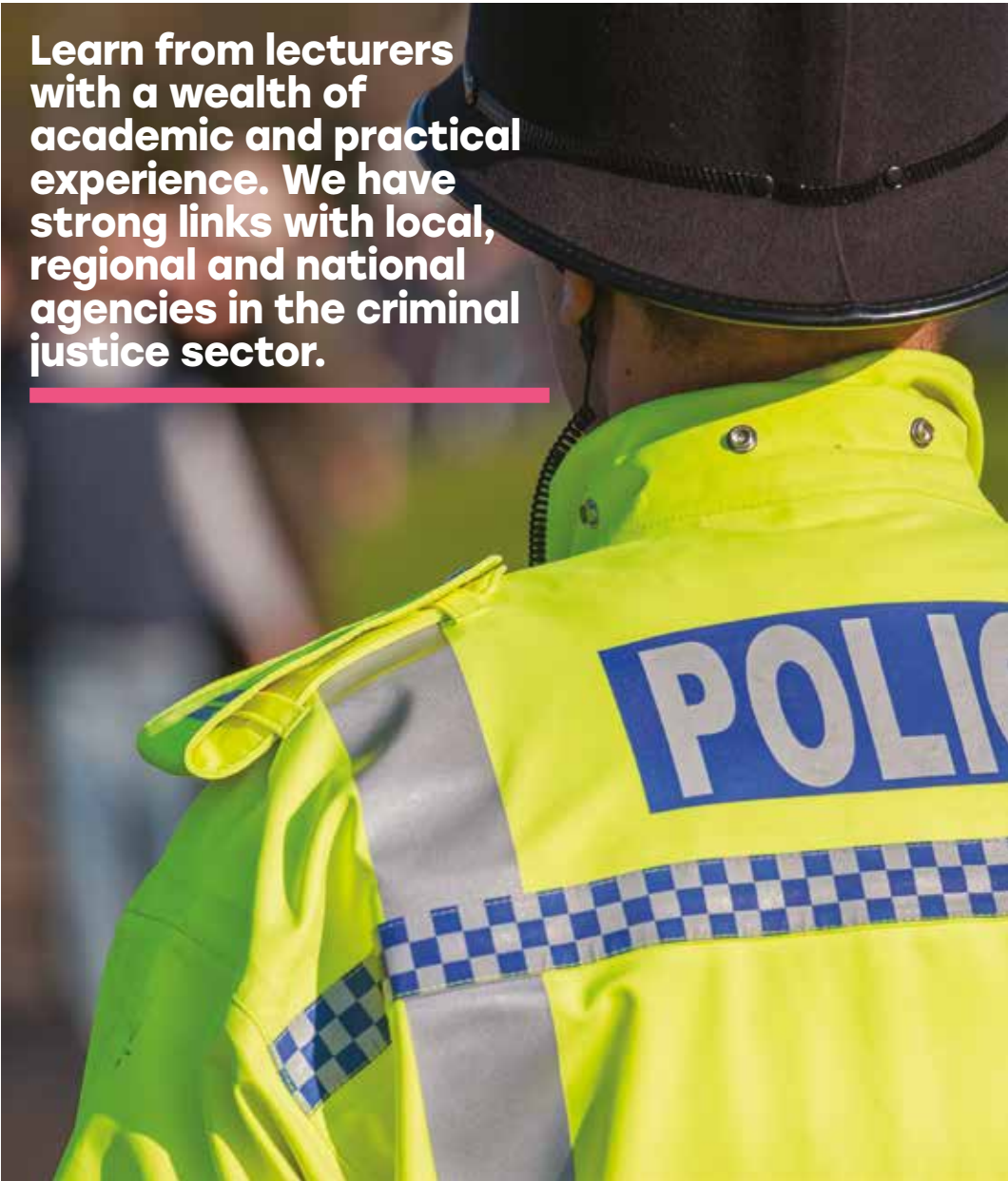
Full details

shu.ac.uk/h144



CRIMINOLOGY

Learn from lecturers with a wealth of academic and practical experience. We have strong links with local, regional and national agencies in the criminal justice sector.



SUPPORT

Our criminology courses are ranked 5th out of 64 universities for student experience in the 2018 Times/Sunday Times Good University Guide.



FACILITIES

In our on-campus moot court you can represent fictitious clients, giving you experience in court etiquette, making a reasoned argument, research, presentation and time management skills.



Criminology and Criminal Justice Practice MSc

Develop your knowledge and understanding of criminology. You will study in the internationally recognised Helena Kennedy Centre for International Justice and develop useful contacts through study opportunities in the UK and internationally. Choose between a traditional dissertation or workplace consultancy in your third semester – preparing you for employment or doctoral study.

Starts September

Full-time – 12 months
Part-time – 24 months

IELTS requirement

6.5 overall, with 6.0 in writing and 5.5 in all other skills

Home/EU fees

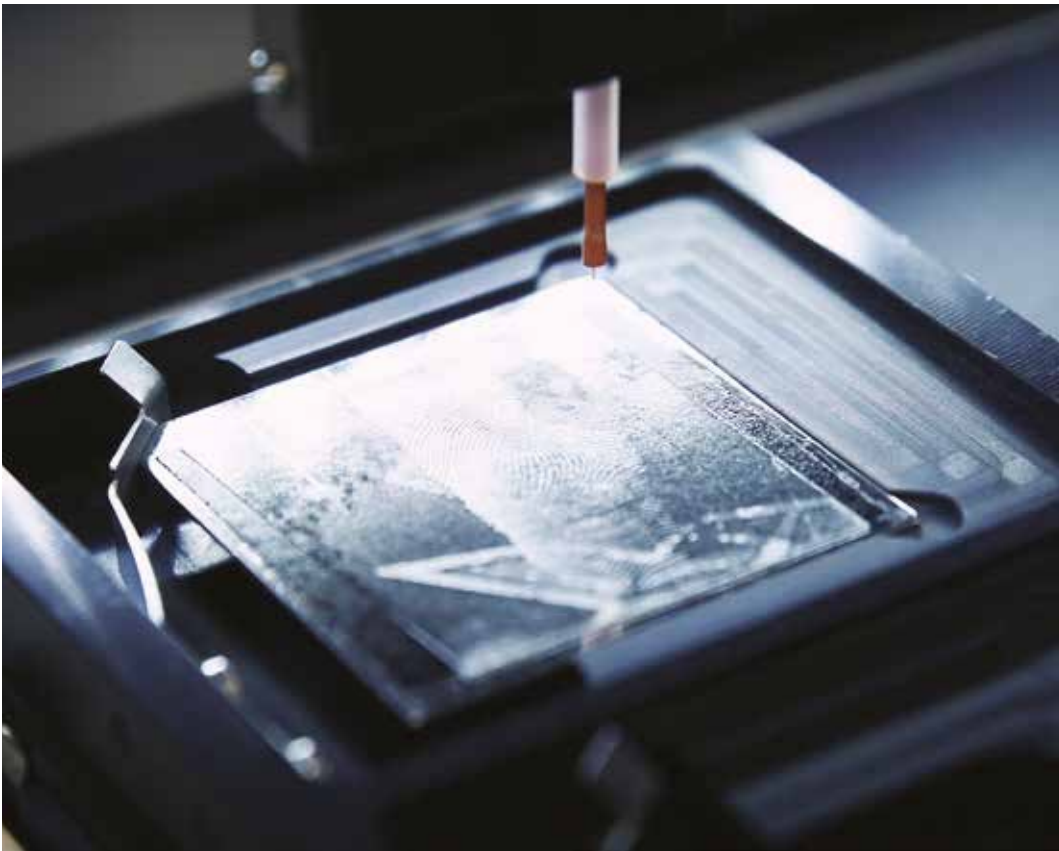
Full-time – £7,420 for the course
Part-time – £7,420 for the course

International fees

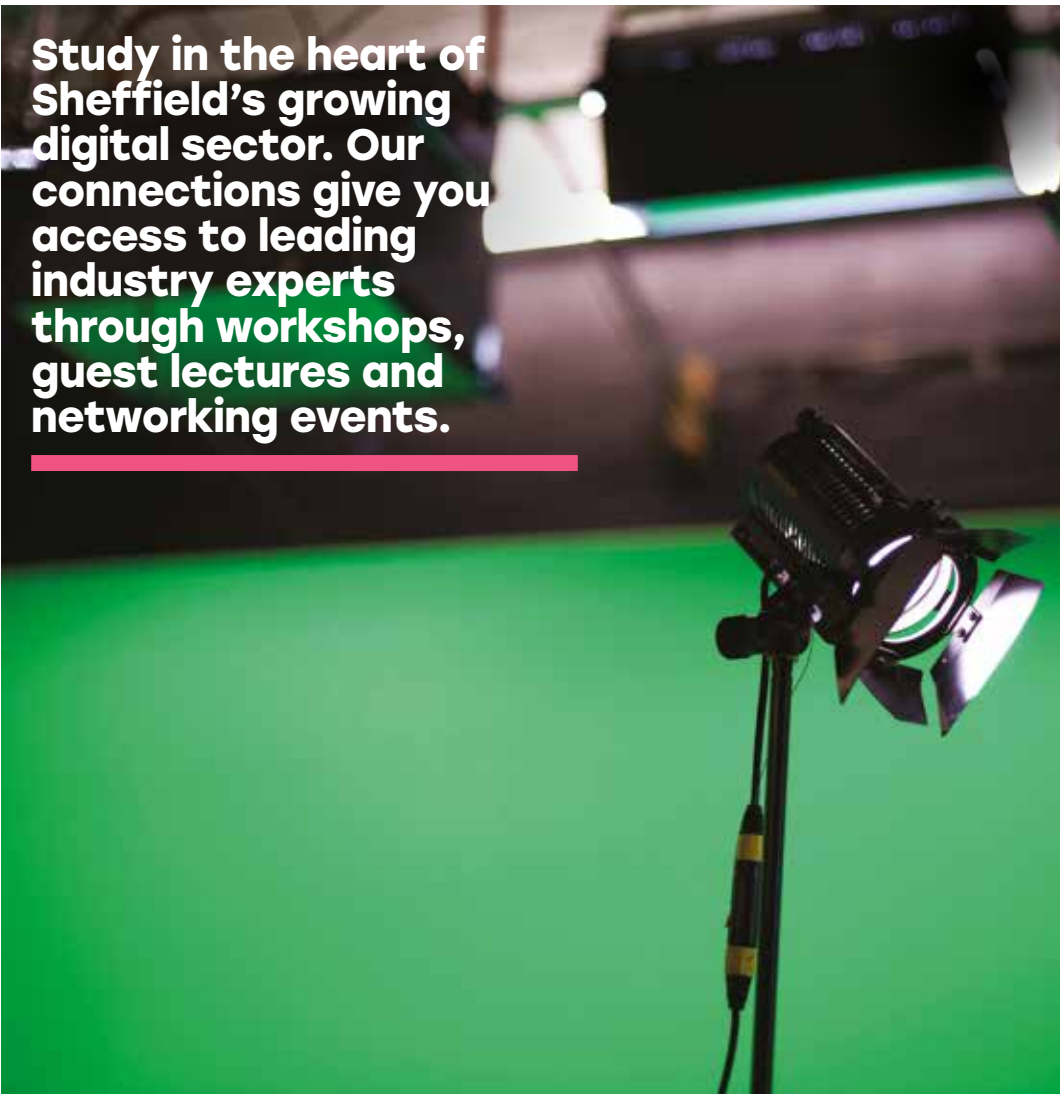
Full-time – £13,905 for the course
Part-time – £13,905 for the course

Full details

shu.ac.uk/h505



DIGITAL MEDIA



Study in the heart of Sheffield's growing digital sector. Our connections give you access to leading industry experts through workshops, guest lectures and networking events.



FACILITIES

Our facilities include TV, photography, radio and animation studios, the world's largest PlayStation™ teaching lab and our own commercial game development studio.



EMPLOYABILITY

We have partnerships with creative companies including Warp Films, Doc/Fest and the BBC, giving you exciting opportunities to network with potential future employers.

Courses in this area are recognised by the following bodies. For accreditation for a specific course, see our full prospectus online.



'Digital media is evolving every day and things change fast. I thought I was very knowledgeable before doing this course, but it's taught me I had so much to learn.'

Aron Mtunji, MA Digital Media Management

Animation and Digital Effects MA

Animation and digital effects provide you with the practical and conceptual skills you need to make an impact in the creative industries. You'll build a portfolio and reinforce it with sound theoretical knowledge, and graduate ready for exciting career opportunities.

Starts September
Full-time – 12 months
Part-time – 24 months

IELTS requirement
6.0 overall, with 5.5 in all skills

Home/EU fees
Full-time – £9,065 for the course
Part-time – £9,065 for the course

International fees
Full-time – £13,905 for the course

Full details
shu.ac.uk/h158

Digital Media Management MA

This course is designed to create experienced, savvy graduates ready for exciting media positions. You'll acquire both the management skills and the media expertise that you need to excel in dynamic creative industries.

Starts September/January
Full-time – 12/24 months
Part-time – 24 months

IELTS requirement
6.0 overall, with 5.5 in all skills

Home/EU fees
Full-time – £9,065 for the course
Part-time – £9,065 for the course

International fees
Full-time – £13,905 for the course

Full details
shu.ac.uk/h159

Filmmaking MA

This course aims to produce a new generation of filmmakers. We help you to develop your production-based creative and technical ability, and ensure that you have the critical grounding and logistical skill that the film industry requires. You'll graduate as an employable, connected industry practitioner.

Starts September
Full-time – 12 months
Part-time – 24 months

IELTS requirement
6.0 overall, with 5.5 in all skills

Home/EU fees
Full-time – £9,065 for the course
Part-time – £9,065 for the course

International fees
Full-time – £13,905 for the course

Full details
shu.ac.uk/h160

Games Design MA

Are you a creative graduate who wants to develop your skills to work in the exciting area of games design? On this course you develop specialist skills to produce real-time game art with the latest 3D software used within the industry.

Starts September
Full-time – 12 months
Part-time – 24 months

IELTS requirement
6.0 overall, with 5.5 in all skills

Home/EU fees
Full-time – £9,065 for the course
Part-time – £9,065 for the course

International fees
Full-time – £13,905 for the course

Full details
shu.ac.uk/h161

Photography MA

Acquire practical and conceptual skills and explore your full potential as a digital, analogue or experimental photographer. You will be supported in the development of your own independent practice as you prepare for a rewarding career within an exciting and ever-expanding field of photography and lens based media.

Starts September/January
Full-time – 12 months
Part-time – 24 months

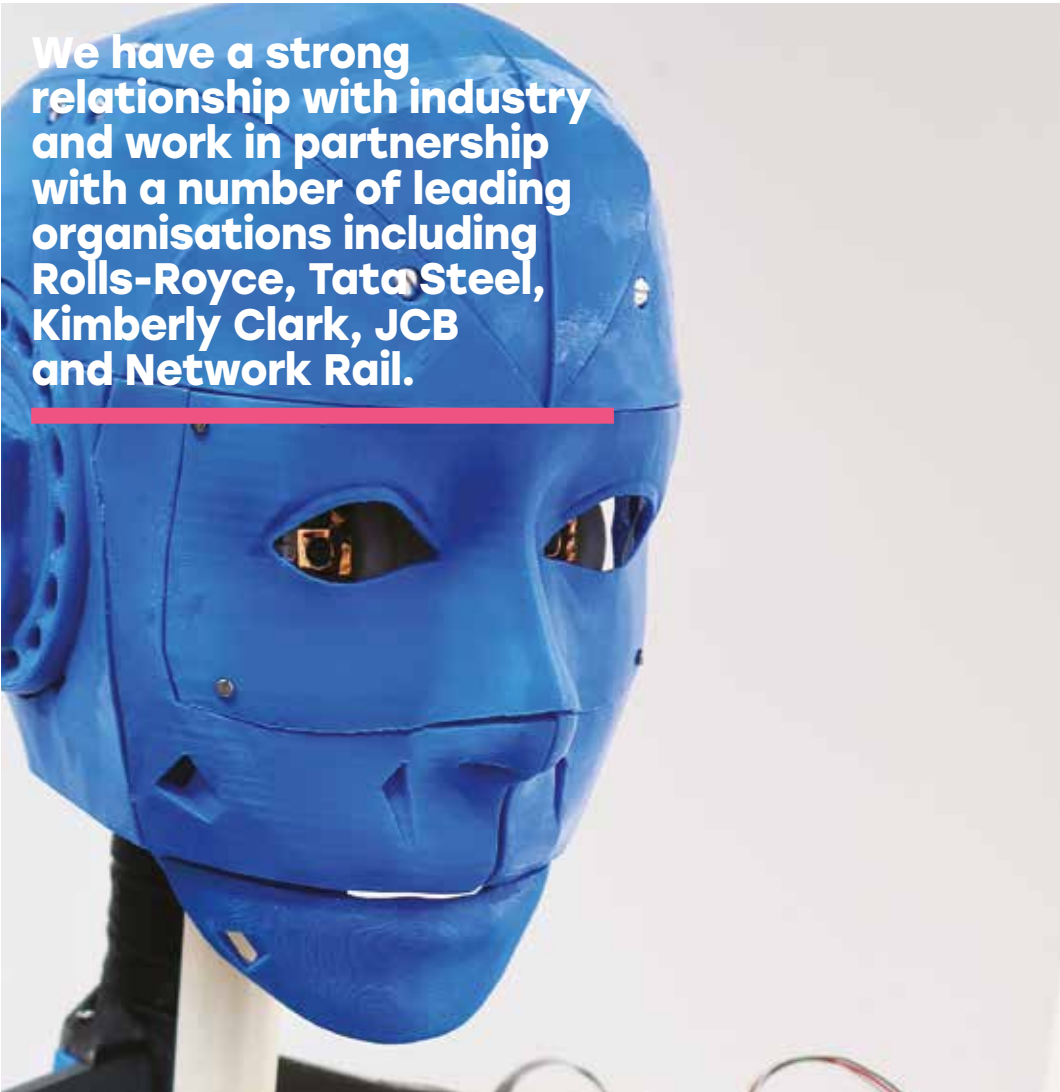
IELTS requirement
6.0 overall with 5.5 in all skills

Home/EU fees
Full-time – £9,065 for the course
Part-time – £9,065 for the course

International fees
Full-time – £13,905 for the course

Full details
shu.ac.uk/h661

ENGINEERING



We have a strong relationship with industry and work in partnership with a number of leading organisations including Rolls-Royce, Tata Steel, Kimberly Clark, JCB and Network Rail.

**FACILITIES**

In 2017 we opened a new £11m state-of-the-art facility for engineering, including a flight simulator, automation and robotics laboratories, wind tunnel, embedded electronic labs and engine test cells.

**EMPLOYABILITY**

Our students have worked with companies including Airbus, BMW, IBM, JCB, Mercedes-Benz, Network Rail, Rolls-Royce and Siemens.

Courses in this area are recognised by the following bodies. For accreditation for a specific course, see our full prospectus online.



‘The company I work for now use the same kind of technology I used in the lab for my dissertation. So my course has definitely had a direct impact on my career.’
Vikram Bhavsar, MSc Automation Control and Robotics

Advanced Engineering and Management MSc <p>Develop your advanced technical and problem-solving skills whilst exploring best practice, leading-edge technologies, processes and systems in engineering and management. This is an ideal course if you're considering moving into a team or project leader role.</p> <p>Starts September/January Full-time – 12/16 months Part-time – 36 months</p> <p>Accredited by Institution of Mechanical Engineers, The Institute of Materials, Minerals and Mining and the Institution of Engineering and Technology</p> <p>IELTS requirement 6.0 overall, with 6.0 in writing and 5.5 in all other skills</p> <p>Home/EU fees Full-time – £7,420 for the course Part-time – £7,420 for the course</p> <p>International fees Full-time – £13,905 for the course</p> <p>Full details shu.ac.uk/h202</p>	Advanced Mechanical Engineering MSc <p>Study on a course that meets the Engineering Council's UK-SPEC requirements for further learning to meet the academic requirements for Chartered Engineering (CEng) status. It's ideal if you wish to develop your technical expertise in mechanical engineering or you are preparing to move to a more technically demanding role.</p> <p>Starts September/January Full-time – 12/16 months Part-time – 36 months</p> <p>Accredited by Institution of Mechanical Engineers</p> <p>IELTS requirement 6.0 overall, with 5.5 in all skills</p> <p>Home/EU fees Full-time – £7,420 for the course Part-time – £7,420 for the course</p> <p>International fees Full-time – £13,905 for the course</p> <p>Full details shu.ac.uk/h204</p>	Automation Control and Robotics MSc <p>Apply the principles of modelling, classical and modern control concepts and controller design packages and learn how to design and exploit automation and robotic systems in a range of manufacturing and industrial applications.</p> <p>Starts September/January Full-time – 12/16 months Part-time – 36 months</p> <p>Accredited by Institution of Engineering and Technology</p> <p>IELTS requirement 6.0 overall, with 5.5 in all skills</p> <p>Home/EU fees Full-time – £7,420 for the course Part-time – £7,420 for the course</p> <p>International fees Full-time – £13,905 for the course</p> <p>Full details shu.ac.uk/h205</p>
--	--	--



‘This course was crucial in getting the job of my dreams. I now work as an consultant for Avanade. I’ve found that I’m familiar with a lot of the discussion at work, as we covered it as part of the masters programme.’
Anxhela Carhoshi, MSc Logistics and Supply Chain Management



'I now work as an engineer in the construction industry and although my new job has been a steep learning curve, I've used the foundation of knowledge from my masters degree to help me develop.'

Victoria Rigby, MSc Mechanical Engineering

Electrical and Electronic Engineering MSc

Gain an understanding of the concepts and methods used in today's electrical and electronic systems and acquire the skills necessary for their design, development and maintenance.

Starts September/January

Full-time – 12/18/24 months
Part-time – 36 months

Accredited by

The Institution of Engineering and Technology

IELTS requirement

6.0 overall, with 5.5 in all skills

Home/EU fees

Full-time – £7,420 for the course
Part-time – £7,420 for the course

International fees

Full-time – £13,905 for the course

Full details

shu.ac.uk/h553

Logistics and Supply Chain Management MSc

This course prepares you for a career as a logistics coordinator, supply chain analyst, solutions analyst, supply chain coordinator or demand analyst. You learn modern approaches to supply chain management such as lean, six-sigma and operations management.

This course offers an optional work experience route including a 12-month work placement.

Starts September/January

Full-time – 12/16 months
Full-time with work placement – 24 months
Part-time – 36 months

Accredited by

Chartered Institute of Procurement and Supply and the Chartered Institute of Logistics and Transport

IELTS requirement

6.0 overall, with 5.5 in all skills

Home/EU fees

Full-time – £7,420 (or £8,620 with work placement) for the course
Part-time – £7,420 for the course

International fees

Full-time – £13,905 for the course

Full details

shu.ac.uk/h207
shu.ac.uk/h556 (work placement route)



ENGLISH

Our English lecturers pride themselves on their creativity, high academic standards and working successfully with students from a diverse range of backgrounds.



EXPERTISE

Our English teaching team includes internationally recognised academics and established writers who are committed to making your studies a stimulating and engaging experience.



EMPLOYABILITY

You have opportunities including producing magazines and contributing to festivals like Off the Shelf Festival of Words, the Festival of Debate, and Doc/Fest film festival.



‘During the MA I started to get my work published in magazines. The course helped equip me with the skills needed to confidently take my knowledge into the job market.’

James Giddings, MA Creative Writing



Creative Writing MA

Join numerous acclaimed authors as a graduate of this longstanding, well-regarded course. We take your work, and your ambition, seriously. You'll focus on your own writing, under the guidance of acclaimed authors of fiction, poetry and scripts, and leave with a body of work you can be proud of.

Starts September

Full-time – 12 months
Part-time – 24/36 months

IELTS requirement

6.5 overall, with 6.0 in writing and 5.5 in all other skills

Home/EU fees

Full-time – £7,420 for the course
Part-time (24 months) – £3,710 per year
Part-time (36 months) – £2,475 per year

International fees

Full-time – £13,905 for the course
Part-time – £13,905 for the course

Full details

shu.ac.uk/h220



‘I’ve met people from all walks of life with different experiences, passions and interests to bring to the table. I’ve been introduced to some brilliant writers and made friends for life.’

Letty Butler, MA Creative Writing

EVENT MANAGEMENT

Study in a city that hosts massive events such as Tramlines, Sheffield Doc/Fest, After Dark, Sheffield Food Festival and MADE Entrepreneur Festival. Many of our students work at these events.



EXPERTISE

Sheffield Hallam is one of the top providers of events courses in the UK. As a founder member of the Association of Event Management Educators (AEME), we are involved in establishing academic benchmarks in events education.



EMPLOYABILITY

We have established a solid relationship with major event organisers so that you have the chance to work, volunteer or just look behind the scenes at events in sports, culture, arts, festivals and more.

Courses in this area are recognised by the following body. For accreditation for a specific course, see our full prospectus online.



‘The transferable skills & knowledge gained as part of the course helped me successfully gain a full-time graduate role, which I am now thoroughly enjoying.’

Liam Walton, MSc International Events and Conference Management

International Events and Conference Management
MSc

Recent developments in event strategy are at the core of this course, based on the research of our academic team. You learn to understand how strategic decisions involve multiple business areas at once and develop your academic and practical knowledge to be able to create meaningful events in a wide range of industries.

This course offers an optional work experience route including a 12-month work placement.

Starts September/January

Full-time – 12/15 months
Full-time (with work placement) – 24 months
Part-time – 24 months

IELTS requirement

Work placement route – 6.5 overall, with 6.0 in all skills
Non-work placement route – 6.0 overall, with 5.5 in all skills

Home/EU fees

Full-time – £8,240 (or £9,065 with work placement) for the course
Part-time – £8,240 for the course

International fees

Full-time – £13,905 (or £15,450 with work placement) for the course

Full details

shu.ac.uk/h228

Strategic Events Marketing
MSc

Explore the issues at the forefront of industry trends in event marketing, events for strategic marketing purposes, and experiential marketing. You will have the opportunity to focus on the event sector of your choice, allowing you to develop your practical skills either in the UK or abroad.

This course offers an optional work experience route including a 12-month work placement.

Starts September

Full-time – 12 months
Full-time with work placement – 24 months
Part-time – 24 months

IELTS requirement

Work placement route – 6.5 overall, with 6.0 in all skills
Non-work placement route – 6.0 overall, with 5.5 in all skills

Home/EU fees

Full-time – £8,240 (or £9,065 with work placement) for the course
Part-time – £8,240 for the course

International fees

Full-time – £13,905 (or £15,450 with work placement) for the course

Full details

shu.ac.uk/h560
shu.ac.uk/h561 (work placement route)

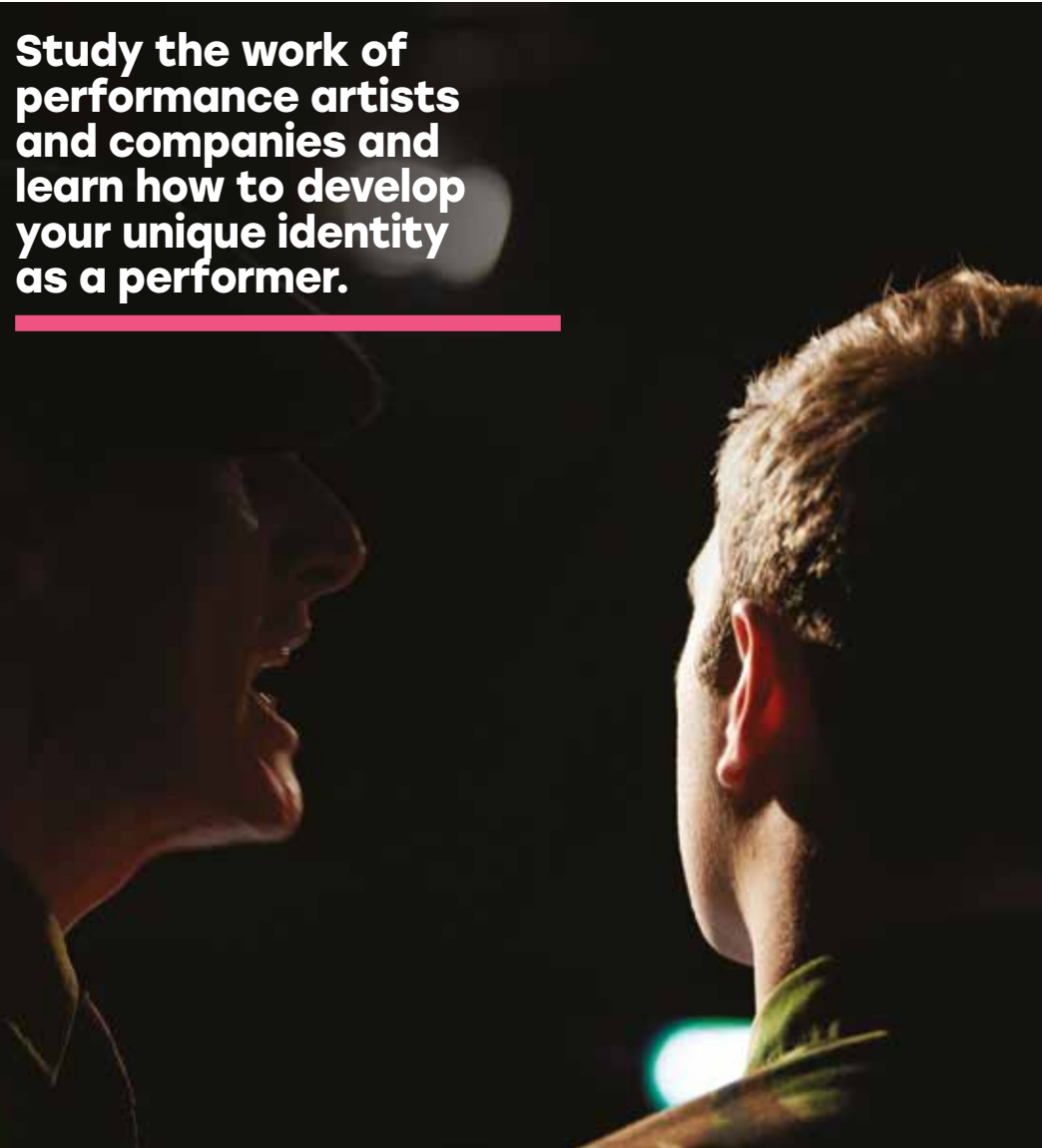


‘The quality of lecturers and modules on the course gave me a real insight into the events industry. I now have a job with one of the top advertising agencies in southeast Asia.’

Por Thanvarat, MSc International Events and Conference Management

FILM AND PERFORMANCE

Study the work of performance artists and companies and learn how to develop your unique identity as a performer.



EMPLOYABILITY

Sheffield Doc/Fest is one of the top three documentary film festivals in the world. Our students work at the event every year.



FACILITIES

Our drama facilities include two theatre studios, state-of-the-art lighting and audio rigs, and backstage facilities.



'This course has given me the ability to freely create the performance work I enjoy. It's challenged me to be pushed to my highest potential.'
James Barkby, MA Performance Practice



Performance Practice MA
Develop your creative voice in the field of performance and build a professional profile to articulate your vision to stakeholders. Study alongside your current employment or develop a freelance or small business enterprise. Gain skills in an intensive retreat environment and in your everyday practice.
Starts September
Full-time – 12 months
IELTS requirement
6.0 overall, with 5.5 in all skills
Home/EU fees
£7,420 for the course
Full details
shu.ac.uk/h562



FOOD AND NUTRITION



We are home to the National Centre of Excellence for Food Engineering, meaning we have the strongest possible links with leading manufacturers and retailers.

**EMPLOYABILITY**

We actively engage and consult with food retailers, manufacturers, public health specialists and nutritionists to design our courses around the changing industry and sector needs to ensure you enjoy excellent career opportunities.

**FACILITIES**

Our £3.5 million specialist food and nutrition kitchen and laboratory facilities include industry standard pasteurisation equipment, modified atmosphere packaging machinery, state-of-the-art exercise equipment and blood testing kits.

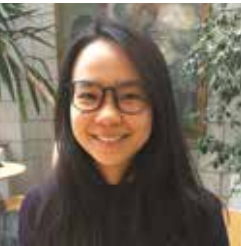
Courses in this area are recognised by the following bodies. For accreditation for a specific course, see our full prospectus online.



'We worked on an amazing project with a national supermarket to develop a new product. It was so hands-on and showed us a real commercial process.'

Ameesha Haneef, MSc Food Consumer Marketing and Product Development

Food and Nutrition Sciences MSc <p>This course will develop your knowledge of the science underpinning nutrition, and the physical and chemical behaviour of foods. You will study in specialised laboratories and development kitchens, preparing you for careers in the food industry in nutrition, product development, technical and consultancy roles.</p> <p>This course offers an optional work experience route including a 12-month work placement.</p> Starts September Full-time – 12 months Full-time with work placement – 24 months Part-time – 24 months	Food Consumer Marketing and Product Development MSc <p>This course has been designed to prepare you to work in the international food supply industry. On this course you will gain an understanding of how to develop new innovative foods based on consumer research and market data. You will gain knowledge of the factors that need to be controlled to ensure the production and distribution of safe, wholesome foods.</p> <p>This course offers an optional work experience route including a 12-month work placement.</p> Starts September Full-time – 12 months Full-time work experience route – 24 months Part-time – 24 months	Nutrition with Obesity and Weight Management MSc <p>Gain the skills and knowledge you need to practise as a nutritionist specialising in obesity and weight management. Explore the root causes behind weight management issues and understand the role nutritionists can play in supporting individuals in their weight loss goals.</p> Starts September Full-time – 12 months Part-time – 24 months
IELTS requirement Work placement route – 6.5 overall, with 6.0 in all skills Non-work placement route – 6.0 overall, with 5.5 in all skills	IELTS requirement Work placement route – 6.5 overall, with 6.0 in all skills Non-work placement route – 6.0 overall, with 5.5 in all skills	IELTS requirement 6.5 overall, with 6.0 in all skills
Home/EU fees Full-time – £8,240 (or £9,065 with work placement) for the course Part-time – £8,240 for the course	Home/EU fees Full-time – £8,240 (or £9,065 with work placement) for the course Part-time – £8,240 for the course	Home/EU fees Full-time – £8,240 for the course Part-time – £8,240 for the course
International fees Full-time – £13,905 (or £15,450 with work placement) for the course	International fees Full-time – £13,905 (or £15,450 with work placement) for the course	International fees Full-time – £13,905 for the course
Full details shu.ac.uk/h242 shu.ac.uk/h568 (work placement route)	Full details shu.ac.uk/h243 shu.ac.uk/h244 (work placement route)	Full details shu.ac.uk/h572



‘My course has got me thinking about public health in the UK and how it compares to home in Malaysia. I’ve been looking into diabetes prevention here and how it could be applied back home.’

Ong Shien Ping, MSc Nutrition with Public Health Management

Nutrition with Public Health Management
MSc

Nutritionists in the public health sector play an important role in promoting good health and preventing diet-related disease in the population. This course equips recent graduates and health professionals with the knowledge and skills to specialise in public health nutrition.

Starts September
Full-time – 12 months
Part-time – 24 months

Accredited by
Association for Nutrition

IELTS requirement
6.5 overall, with 6.0 in all skills

Home/EU fees
Full-time – £8,240 for the course
Part-time – £8,240 for the course

International fees
Full-time – £13,905 for the course

Full details
shu.ac.uk/h245

Nutrition for Sport and Exercise
MSc

On this course, you'll gain the knowledge and skills required to become a qualified nutritionist with a focus on sport and exercise. Access to our specialist facilities and expert staff will ensure that you'll graduate well-equipped to support active individuals and populations in achieving good nutrition to optimise performance.

Starts September
Full-time – 12 months
Part-time – 24 months

Accredited by
Association for Nutrition

IELTS requirement
6.5 overall, with 6.0 in all skills

Home/EU fees
Full-time – £8,240 for the course
Part-time – £8,240 for the course

International fees
Full-time – £13,905 for the course

Full details
shu.ac.uk/h569



GEOGRAPHY AND ENVIRONMENT

Study the latest topics in planning, Geographic Information System (GIS) and the environment on vocational courses with excellent employment prospects.



FACILITIES

As well as learning facilities in Sheffield, the fifth largest city in the UK, you can also explore rural and environmental themes in the Peak District National Park, which is just a 20 minute drive or bus ride away.



EXPERTISE

We are actively involved in applied research and we provide a wide range of consultancy and professional development services for local and national organisations.

Courses in this area are recognised by the following bodies. For accreditation for a specific course, see our full prospectus online.



'I've specialised in a growing area and gained crucial technical skills for starting my career. It's given me more confidence when applying for graduate roles.'

Jack Lewis, MSc Geographical Information Systems

Environmental Management MSc

Cover the core knowledge and competencies required for a career in environmental management. Specialise in wildlife and landscape management or international resource management, or design your own course based on modules offered for those two routes.

Starts September

Full-time – 16 months
Part-time – 36 months

Accredited by

The Royal Institution of Chartered Surveyors and the Chartered Institution of Water and Environmental Management

IELTS requirement

6.0 overall, with 5.5 in all skills

Home/EU fees

Full-time – £7,420 for the course
Part-time – year 1 £2,475, year 2 £4,950

International fees

Full-time – £13,905 for the course
Part-time – £13,905 for the course

Full details

shu.ac.uk/h250

Geographical Information Systems MSc

Geographical Information Systems (GIS) are becoming increasingly important, both nationally and internationally, in the wide range of professions where acquisition, management, interpretation and analysis of geographical information is of use. Through this applied course, you will be well placed to work in a range of industry and academic sectors.

Starts September/January

Full-time – 12/16 months
Part-time – 36 months

IELTS requirement

6.0 overall, with 5.5 in all skills

Home/EU fees

Full-time – £7,420 for the course
Part-time – year 1 £2,475, year 2 £4,950

International fees

Full-time – £13,905 for the course
Part-time – £13,905 for the course

Full details

shu.ac.uk/h251

Urban Planning MSc

Explore your own interests and create a personalised professional profile with this fully RTPI and RICS accredited course. We offer an adaptable approach to learning and assessment and a range of specialisms, including

- environment
- urban design and development
- housing
- historic environment
- transport and infrastructure
- economic development
- health

Starts September/January

Full-time – 12/16 months
Part-time – 36 months

Accredited by

The Royal Institute of Chartered Surveyors and the Royal Town Planning Institute

IELTS requirement

6.0 overall, with 5.5 in all skills

Home/EU fees

Full-time – £7,420 for the course
Part-time – year 1 £2,475, year 2 £4,950

International fees

Full-time – £13,905 for the course
Part-time – £13,905 for the course

Full details

shu.ac.uk/h252



HEALTH AND SOCIAL CARE



We are one of the largest health and social care educators in the UK. In the last five years, we have trained over 6,500 health and social care professionals.

EXPERTISE

Our courses are designed with clinicians, education specialists, commissioners and service users, making sure you graduate with the skills and knowledge you need.

FACILITIES

Train in facilities based on real work environments, with virtual patient technology preparing you for real world situations you'll face when you qualify.

Courses in this area are recognised by the following bodies. For accreditation for a specific course, see our full prospectus online.



'The teaching staff are highly experienced within the field and very passionate. I've learnt clinical skills, reflective skills, and furthered my communication and interpersonal skills too.'

Ching Pan Law, MSc Occupational Therapy (Pre-registration)

Acute Care of the Child and Their Family MSc On this distance learning course, you'll gain the specialist skills and expertise you need to care for acutely and critically unwell children, and support their families. You'll study everything from disease processes to ethical issues, and you can tailor the course to your existing clinical career, graduating with enhanced employability and specialist skills. Starts September Distance learning – 36 months IELTS requirement 6.5 overall, with 6.0 in writing and 5.5 in all other skills Home/EU fees £8,240 for the course International fees £8, 240 for the course Full details shu.ac.uk/h578	Advanced Clinical Practice MSc This course is aimed at people who are training to become an advanced clinical practitioner in a wide variety of healthcare settings. It is intended for experienced healthcare professionals and for those wishing to formalise and develop their role as an advanced clinical practitioner. Starts September/January Part-time – 36 months IELTS requirement 6.5 overall, with 5.5 in all skills Home/EU fees £8,240 for the course Full details shu.ac.uk/h314	Advanced Clinical Practice (Image Interpretation) MSc This course is designed to enhance your current practice and role towards becoming an advanced clinical practitioner undertaking clinical reporting. It will help you demonstrate the ability to provide clinical diagnostic imaging reports in the clinical area required in your role. Starts September Distance learning – 36 months IELTS requirement 6.5 overall, with 6.0 in all skills Home/EU fees £8,240 for the course International fees £8,240 for the course Full details shu.ac.uk/h533
---	--	--





‘The support I received from tutors made getting back into academic work less daunting! As well as gaining social work child care experience, I am now a qualified AMHP.’

Paul Curran, PgCert Approved Mental Health Professional



‘I really enjoy that the sessions are very interactive and lecturers really get you thinking about education and your own practice. Being able to network with people in similar roles to me is really valuable.’

Aimi Dillon, MSc Healthcare Education

Advanced Clinical Practice (Musculoskeletal Management) MSc

This course is designed for experienced postgraduate healthcare professionals who work in musculoskeletal clinical practice or have studied manual therapy at a high level. You advance your clinical, therapeutic and reasoning skills in the field of musculoskeletal clinical practice.

Starts September/January
Part-time – 36 months

IELTS requirement
6.5 overall, with 6.0 in all skills
7.0 overall, with 6.5 in all skills is required for HCPC registration

Home/EU fees
£8,240 for the course

Full details
shu.ac.uk/h617

Advanced Clinical Practice (Radiotherapy and Oncology) MSc

Work towards developing a profile that satisfies professional body requirements for advanced practice in radiotherapy and oncology (for UK practitioners) and statutory requirements for continuing professional development. You can tailor the course content to reflect your scope of practice, development needs and service requirements.

Starts September/May
Distance learning – 36 months

IELTS requirement
6.5 overall, with 6.0 in all skills

Home/EU fees
£8,240 for the course

International fees
£8,240 for the course

Full details
shu.ac.uk/h622

Advancing Professional Practice MSc

Continuing professional development is a key requirement of health and social care professionals. This flexible course allows you to tailor your studies according to your own development needs, helping you to progress to more advanced or specialist roles.

Starts January/April/May/August
Part-time – 36 months

IELTS requirement
6.5 overall, with 5.5 in all skills

Home/EU fees
£8,240 for the course

Full details
shu.ac.uk/h258

Approved Mental Health Professional PgCert

Study on a course approved by the Health and Care Professions Council, aimed at qualified, experienced professionals in mental health who wish to become approved mental health professionals. You study the application of values, ethics and dilemmas, mental health and wider associated law and policy.

Starts September
Full-time – 5 months
Part-time – 9 months

Accredited by
Health and Care Professions Council

IELTS requirement
7.0 overall, with 6.5 in all skills

Home/EU fees
Full-time – £2,750 for the course
Part-time – £2,750 for the course

Full details
shu.ac.uk/h354

Child, Adolescent and Family Mental Health MSc

Develop your knowledge of mental health for children, adolescents and families around your existing role. You will consider the factors which affect emotional health from an early age, and focus on a specific area in a dissertation. When you graduate, you'll be ready for a rewarding, specialist role within mental health.

Starts September
Distance learning – 36 months

IELTS requirement
6.5 overall, with 6.0 in writing and 5.5 in all other skills

Home/EU fees
£8,240 for the course

International fees
£8,240 for the course

Full details
shu.ac.uk/h608

Dietetics (pre-registration) MSc

Gain a unique understanding of nutrition, metabolism, food composition and diet and how food can be used to promote health and treat serious conditions. You apply your learning on practical placements, and at the end of the course you'll be eligible for registration with the Health and Care Professions Council, which is compulsory for practising dietitians in the UK.

Starts January
Full-time – 24 months

Accredited by
British Dietetic Association

IELTS requirement
7.0 overall, with 6.5 in all skills

Home/EU fees
£21,000 for the course

International fees
£33,900 for the course

Full details
shu.ac.uk/h567

Enhanced Diagnostic Imaging Practice MSc

This distance learning course is designed for health professionals who use diagnostic imaging and interventions in their current role, including diagnostic and therapeutic radiographers, radiation technologists, physiotherapists, nurses, advanced nurse practitioners, junior doctors, dentists and podiatrists.

Starts September/January
Distance learning – 36 months

IELTS requirement
6.5 overall, with 6.0 in writing and 5.5 in all other skills

Home/EU fees
£8,240 for the course

International fees
£8,240 for the course

Full details
shu.ac.uk/h535

Enhanced Radiotherapy and Oncology Practice MSc

Learn about cancer cell biology and how treatments affect the growth and development of the disease, individually and in combination with each other. Enhance your knowledge of specific radiotherapy practice whilst taking a wider perspective as you look at the interdisciplinary nature of oncology.

Starts September/January
Distance learning – 36 months

IELTS requirement
6.5 overall, with 6.0 in all skills

Home/EU fees
£8,240 for the course

International fees
£8,240 for the course

Full details
shu.ac.uk/h623



‘This course gave me the skills I needed to secure a job in diagnostic ultrasound. The staff were extremely supportive, and there was a great balance of clinical practice and academic learning.’

Rachael Kyte, MSc Medical Ultrasound



‘This course is brilliant for getting loads of experience when you’re on placement. Being able to put into practice what you’ve learned really enhances your confidence.’

Bryony Wilkinson, Nursing (Adult) student

Health and Social Care Education MSc <p>This course is aimed at early career educators, as well as experienced practitioners in health and social care. It is designed to develop your educational knowledge base and practical teaching skills. The course is flexible to your personal requirements – you can take it to the level of qualification that you require.</p> Starts September/January <p>Full-time – 24 months Part-time – 36 months Distance learning – 24/36 months</p> Accredited by <p>Nursing and Midwifery Council</p> IELTS requirement <p>6.5 overall, with 6.0 in all skills</p> Home/EU fees <p>Full-time – £8,240 for the course Part-time – £8,240 for the course Distance learning – £8,240 for the course</p> International fees <p>Full-time – £13,905 for the course</p> Full details <p>shu.ac.uk/h573</p>	Health and Wellbeing MRes <p>This course is designed for professionals wishing to enhance their careers in health and wellbeing. You'll study around your own schedule, and prepare yourself either for doctoral studies, or for a more specialist or senior role in healthcare.</p> Starts September <p>Distance learning – 36 months</p> IELTS requirement <p>6.5 overall, with 6.0 in writing and 5.5 in all other skills</p> Home/EU fees <p>£8,240 for the course</p> International fees <p>£8,240 for the course</p> Full details <p>shu.ac.uk/h575</p>	Medical Ultrasound Practice MSc <p>On this course, you'll gain the skills, knowledge and professional accreditation you need to become an effective sonographer. You'll work in state-of-the-art simulated clinical environments, and apply your skills to your own practice with a clinical supervisor. You'll graduate ready for a rewarding career as an ultrasound practitioner.</p> Starts September <p>Part-time – 31 months</p> IELTS requirement <p>7.0 overall, with 5.5 in all skills</p> Home/EU fees <p>£9,890 for the course</p> Full details <p>shu.ac.uk/h550</p>
Health and Social Care Leadership MSc <p>Leadership has consistently been shown to be key to the effective delivery of health and social care services. Indeed, lack of leadership has been cited as a major cause of most health and social care system failures. On this course, you'll learn how to lead effectively and make sustainable improvements to health and social care services.</p> Starts September <p>Part-time – 36 months</p> IELTS requirement <p>6.5 overall, with 5.5 in all skills</p> Home/EU fees <p>£8,240 for the course</p> Full details <p>shu.ac.uk/h574</p>		

Nursing (Adult) MSc <p>This course provides you with the experience, skills and credentials you need to practise adult nursing in the UK, in two years rather than three. You'll spend 39 weeks on placement – with mentoring and support throughout – and study in our cutting-edge facilities.</p> Starts March <p>Full-time – 24 months</p> Accredited by <p>Nursing and Midwifery Council</p> IELTS requirement <p>7.0 overall with 7.0 in all skills</p> Home/EU fees <p>See website for details</p> International fees <p>£30,000 for the course</p> Full details <p>shu.ac.uk/h316</p>	Nursing (Child) MSc <p>This course provides you with the experience, skills and credentials you need to practise child nursing in the UK, in two years rather than three. You'll spend 39 weeks on placement – with mentoring and support throughout – and study in our cutting-edge facilities.</p> Starts March <p>Full-time – 24 months</p> Accredited by <p>Nursing and Midwifery Council</p> IELTS requirement <p>7.0 overall with 7.0 in all skills</p> Home/EU fees <p>See website for details</p> International fees <p>£30,000 for the course</p> Full details <p>shu.ac.uk/h317</p>	Nursing (Mental Health) MSc <p>This course provides you with the experience, skills and credentials you need to practise mental health nursing in the UK, in two years rather than three. You'll spend 39 weeks on placement – with mentoring and support throughout – and study in our cutting-edge facilities.</p> Starts March <p>Full-time – 24 months</p> Accredited by <p>Nursing and Midwifery Council</p> IELTS requirement <p>7.0 overall with 7.0 in all skills</p> Home/EU fees <p>See website for details</p> International fees <p>£30,000 for the course</p> Full details <p>shu.ac.uk/h318</p>
--	--	--





‘Being able to learn on the job and go on placement is a great opportunity to meet different people from the profession and develop a deeper understanding, which you don’t get from a textbook.’

Katie Bell, MSW Social Work

Nursing (Public Health) MSc Become eligible for registration with the Nursing and Midwifery Council (NMC) as a specialist community public health nurse, health visitor or school nurse. This course provides you with the skills and experience you need for full-time practice, and meets the NMC’s standards for such training. Starts September/January Distance learning – 24 months Accredited by Nursing and Midwifery Council IELTS requirement 7.0 overall with 7.0 in all skills Home/EU fees £8,240 for the course Full details shu.ac.uk/h319	Nursing Studies MSc This course is aimed at registered nurses who wish to specialise and enhance their skills. You’ll undertake a rigorous academic programme including an independently researched dissertation project, and top up your existing postgraduate diploma or undergraduate degree to masters level. Starts September/January/ May Distance learning – 20 months Part-time – 36 months IELTS requirement 6.0 overall, with 5.5 in all skills Home/EU fees Distance learning £2,750 per stage Part-time – £2,750 per stage International fees Distance learning – £2,750 per stage Full details shu.ac.uk/h320	Occupational Therapy (Pre-Registration) MSc One of the first masters-level routes to qualification as an occupational therapist in the UK, this course allows you to become eligible for application to the Health and Care Professions Council in two years. The integrated placement and rigorous academic study offer a particularly well-rounded education. Starts January Full-time – 24 months Accredited by Health and Care Professions Council, the British Association of Occupational Therapists and the Royal College of Occupational Therapists IELTS requirement 7.0 overall, with 5.5 in all skills Home/EU fees See website for details International fees £33,900 for the course Full details shu.ac.uk/h327
--	---	--



Physiotherapy (Pre-Registration) MSc This masters-level physiotherapy course provides you with the training, qualifications and opportunities to embark on an exciting career in the field. Aimed at applicants who have already studied a degree in the subject, it instills an advanced level of clinical reasoning, critical thinking and reflection. Starts January Full-time – 24 months Accredited by Health and Care Professions Council. Also accredited by the Chartered Society of Physiotherapy IELTS requirement 7.0 overall, with 5.5 in all skills Home/EU fees £24,000 for the course International fees £33,900 for the course Full details shu.ac.uk/h336	Prostate Cancer Care MSc Learn how to manage the stages of prostate cancer including the physical and psychosocial impact of treatment, and the needs of those affected. You gain understanding of the wider specialist and advanced practice role in areas such as leadership, peer support, education, and service development and improvement. Starts September/January Distance learning – 36 months IELTS requirement 6.5 overall, with 6.0 in all skills Home/EU fees £8,240 for the course International fees £8,240 for the course Full details shu.ac.uk/h345	Radiotherapy Planning Practice MSc On this course, you’ll study remotely around your existing radiotherapy position, and enhance your clinical practices as you do so. You’ll benefit from excellent web-based learning materials, and a supportive online community of students and lecturers. Upon graduating, you’ll have attained worthwhile specialist skills and qualifications. Starts September/January Distance learning – 36 months IELTS requirement 6.5 overall, with 6.0 in all skills Home/EU fees £8,240 for the course International fees £8,240 for the course Full details shu.ac.uk/h625
--	---	--



Social Work MSW

Provide people with help, support and guidance when they need it and protect vulnerable children, families and adults. Prepare for a career in social work with a course that is well connected with social work and social care service providers in the region.

Starts March
Full-time – 24 months

Accredited by
Health and Care Professions Council

IELTS requirement
7.0 overall, with 6.5 in all skills

Home/EU fees
£16,480 for the course

International fees
£27,810 for the course

Full details
shu.ac.uk/h353

Specialist Community Public Health Nursing (Health Visitor) PgDip

This course is aimed at post-registration nurses or midwives who want to become a health visitor.

You'll identify and meet the needs of children and their families and develop your professional nursing practice, eventually becoming a registered health visitor or student nurse.

Starts September
Full-time – 12 months
Part-time – 24 months

Accredited by
Nursing and Midwifery Council

IELTS requirement
7.0 overall, with 5.5 in all skills

Fees
See website for details

Full details
shu.ac.uk/h610

Specialist Community Public Health Nursing (School Nursing) PgDip

This course is aimed at post-registration nurses or midwives who want to become a school nurse.

You'll identify and meet the needs of children and their families and develop your professional nursing practice, eventually becoming a registered health visitor or student nurse.

Starts September
Full-time – 12 months
Part-time – 24 months

Accredited by
Nursing and Midwifery Council

IELTS requirement
7.0 overall, with 5.5 in all skills

Fees
See website for details

Full details
shu.ac.uk/h611

Specialist Physiotherapy Practice MSc

Aimed at qualified physiotherapists, this course gives you a balance of practical and academic skills, as you develop knowledge that is directly transferable to your practice. You will improve your employment prospects and clinical skills, enabling you to lead clinical teams or work in teaching or research.

Starts September/January
Full-time – 18 months
Part-time – 36 months
Distance learning – 36 months

IELTS requirement
6.5 overall, with 6.0 in all skills

Home/EU fees
Full-time – £8,240 for the course
Part-time – £8,240 for the course
Distance learning – £8,240 for the course

International fees
Full-time – £15,450 for the course
Distance learning – £8,240 for the course

Full details
shu.ac.uk/h620

Specialist Practice District Nursing MSc

This dissertation course is essentially an individual, self-directed piece of work specific to your professional area and interests. It is suitable if you have previously undertaken the postgraduate diploma in Specialist Practice District Nursing (see below). Your work will help improve district nursing practice.

Starts September
Part-time – 24 months

Accredited by
Nursing and Midwifery Council

IELTS requirement
7.0 overall, with 7.0 in all skills

Home/EU fees
£8,240 for the course

Full details
shu.ac.uk/h321

Specialist Practice District Nursing PgDip

This course helps you to extend and develop a critical understanding of the advances in district nursing practice. You will learn how to maximise relationships with key partners and coordinate care for people in their own homes and other environments.

Starts September
Full-time – 12 months
Part-time – 24 months

Accredited by
Nursing and Midwifery Council

IELTS requirement
7.0 overall, with 7.0 in all skills. This course is only open to UK/EU students.

Home/EU fees
See website for details

Full details
shu.ac.uk/h325

Supportive, Palliative and End of Life Care MSc

On this course, you'll study flexibly around your existing commitments in practice, and apply your knowledge to your role. You'll work collaboratively in researching management strategies for end-of-life care, while studying independently towards a deeper understanding of care.

Starts September/January
Distance learning – 36 months

IELTS requirement
6.5 overall, with 6.0 in all skills

Home/EU fees
£8,240 for the course

Full details
shu.ac.uk/h626

Vocational Rehabilitation MSc

This course is for you if you work in an employment-related area. Learn to help those with illness, injury and disabilities overcome obstacles in the workplace. You'll specialise to suit your interests, work and experience, graduating with sought-after qualifications.

Starts September/January
Distance learning – 36 months

IELTS requirement
6.5 overall, with 6.0 in all skills

Home/EU fees
£8,240 for the course

International fees
£8,240 for the course

Full details
shu.ac.uk/h613



LAW



Our partnerships range from local solicitors firms and third sector organisations to London chambers, international law firms and other leading universities across the world.

EXPERTISE

We are recognised as a leading department with award-winning expertise in professional skills and innovative teaching.

FACILITIES

In our on-campus moot court you can represent fictitious clients, giving you experience in court etiquette, making a reasoned argument, research, presentation and time management skills.

Courses in this area are recognised by the following body. For accreditation for a specific course, see our full prospectus online.



'I studied this course because I wanted to make a difference. I was so impressed with the support I received. The lecturer was passionate about the course and that excited me.'

Marcos Cuevas-Nunez, MA in Applied Human Rights

Applied Human Rights MA

Develop your skills, gain hands-on experience and become an employable specialist in international or domestic human rights. This course provides the grounding you need to begin a fulfilling career advocating for and protecting others, covering wide-ranging subjects and issues in human rights.

Starts September/January

Full-time – 12 months
Part-time – 24 months

IELTS requirement

6.5 overall, with 6.0 in writing and 5.5 in all other skills

Home/EU fees

Full-time – £7,420 for the course
Part-time – year 1 £2,475, year 2 £4,950

International fees

Full-time – £13,905 for the course
Part-time – £13,905 for the course

Full details

shu.ac.uk/h285

Applied Human Rights LLM

Develop your skills, build a network and become a more knowledgeable postgraduate in international and domestic human rights law. Gain the grounding you need to enter human rights law and advance your existing degree, covering the breadth of human rights theory and practice.

Starts September/January

Full-time – 12 months
Part-time – 24 months

IELTS requirement

6.5 overall, with 6.0 in writing and 5.5 in all other skills

Home/EU fees

Full-time – £7,420 for the course
Part-time – year 1 £2,475, year 2 £4,950

International fees

Full-time – £13,905 for the course
Part-time – £13,905 for the course

Full details

shu.ac.uk/h281

International Sports Law in Practice LLM

Learn how to effectively represent clients in complex sporting disputes. Designed and delivered by internationally recognised experts, this course offers expertise in the practice and procedure before the Court of Arbitration for Sport, FIFA's Dispute Resolution Chamber, UK Anti-Doping and other disciplinary courts and tribunals.

Starts September/January

Distance learning – 12 months (full-time) / 24 months (part-time)
Part-time entry only for January

IELTS requirement

6.5 overall, with 6.0 in writing and 5.5 in all other skills

Home/EU fees

Full-time – £7,420 for the course
Part-time – £7,420 for the course

International fees

Full and part-time – £8,525 for the course

Full details

shu.ac.uk/h283

Legal Professional Practice LLM

This law conversion course equips you with the legal knowledge to undertake the Legal Practice Course (or in future, the Solicitors' Qualifying Exam) or the Bar Professional Training Course. It also gives you a practical edge in the employment market, as you will gain real life work experience in our on-campus law firm in your final semester.

Starts September

Full-time – 12 months
Part-time – 24 months

Accredited by

The Solicitors Regulation Authority

IELTS requirement

6.5 overall, with 6.0 in writing and 5.5 in all other skills

Home/EU fees

Full-time – £7,420 for the course
Part-time – £7,420 for the course

International fees

Full-time – £13,905 for the course
Part-time – £13,905 for the course

Full details

shu.ac.uk/h593

MBA



For managers, entrepreneurs and leaders seeking career progression, build on your existing ability and develop the leadership skills you need for senior management.



EMPLOYABILITY

Personalised coaching ensures that you graduate with the skills and confidence to become an agile and resilient business leader of the future.



EXPERTISE

Join a community of managers and leaders from across a range of professions and industry backgrounds, and gain excellent networks and new perspectives.

Courses in this area are recognised by the following bodies. For accreditation for a specific course, see our full prospectus online.



'The MBA experience has allowed me to find who I am as a person in the workplace. I am now confident in my work ethics and more informed about who I am and where I stand in relation to my career and ambitions.'
Mohammed Abdulredha, MBA

**Executive MBA
MBA**

This course is designed to give you the skills, knowledge and experience to advance your career into senior management. It is tailored around you and your individual development needs, with personalised coaching. At the end of the course you graduate with the skills and confidence to become an agile and resilient business leader of the future.

Starts October/February
Part-time – 36 months

Accredited by
Institute of Leadership and Management

IELTS requirement
6.5 overall, with 6.0 in all skills

Home/EU fees
£14,215 for the course

Full details
shu.ac.uk/h596

**Executive MBA
(Cooperative Leadership and Social Entrepreneurship)
MBA**

Gain the skills, knowledge and experience to advance your career in social enterprise management and cooperative development. Enhance your leadership skills, identify your strengths and weaknesses, and learn from specialists at Sheffield Hallam University, the Cooperative College, and the Sobey School of Business.

Starts October
Part-time – 36 months

Accredited by
Institute of Leadership and Management

IELTS requirement
6.5 overall, with 6.0 in all skills

Home/EU fees
£14,215 for the course

Full details
shu.ac.uk/h594

**Executive MBA
(Facilities Management)
MBA**

Designed for estates and facilities management professionals seeking rapid career progression, this course builds on your existing ability and challenges you to develop the executive leadership skills needed for senior management.

Starts October
Part-time – 36 months

Accredited by
Royal Institution of Chartered Surveyors, Institute of Leadership and Management and the Institute of Workplace and Facilities Management

IELTS requirement
6.5 overall, with 6.0 in all skills

Home/EU fees
£14,215 for the course

Full details
shu.ac.uk/h595



'This course helped me secure two promotions, including a move to a senior global role at HSBC, where I now lead strategic negotiations with corporate service providers.'
Ilya Bykov, Executive MBA

**Executive MBA
(Hospitality
Management)
MBA**

This course gives you everything you need to enter senior positions in hospitality. You'll balance your existing commitments with your studies, and read widely outside of immediate hospitality subjects. This blended learning experience – with practical projects and theoretical studies – allows for a particularly well-rounded education.

Starts October
Part-time – 36 months

Accredited by
Institute of Leadership
and Management

IELTS requirement
6.5 overall, with 6.0 in all skills

Home/EU fees
£14,215 for the course

Full details
shu.ac.uk/h647

**MBA (Industrial
Management)
MBA**

Maximise your employment and career potential and learn to apply your technical aptitude and expertise in industrial management. The course is aimed at mid-career professionals wishing to make the move to senior management within industrial and manufacturing organisations.

Starts September/January
Full-time – 16 months
Part-time – 36 months

Accredited by
Institution of Mechanical Engineers

IELTS requirement
6.0 overall, with 5.5 in all skills

Home/EU fees
Full-time – £12,580 for the course
Part-time – £12,580 for the course

International fees
Full-time – £15,450 for the course

Full details
shu.ac.uk/h293

**MBA Master of Business
Administration**

This course is designed to give you the skills, knowledge and experience to advance your career into senior management. Our MBA is tailored around you and your individual development needs. Personalised coaching ensures that you graduate with the skills and confidence to become an agile and resilient business leader of the future. This course offers an optional work experience route including a 12-month work placement.

Starts September/January
Full-time – 12/15 months
Full-time with work placement – 24 months

Accredited by
Institute of Leadership
and Management

IELTS requirement
6.5 overall, with 6.0 in all skills

Home/EU fees
£14,215 for the course

International fees
£15,965 for the course

Full details
shu.ac.uk/h294



MEDIA, PR AND JOURNALISM

Our partnerships mean you gain access to a wide range of industry networks with organisations such as the BBC, Doc/Fest and South Yorkshire Police.



FACILITIES

We have industry-standard radio, TV and journalism suites so you can produce news bulletins, features and interviews for broadcast, newspapers, magazines and online.



EMPLOYABILITY

Our connections with PR and digital media agencies, journalists and bloggers at some of the country's top media outlets will give you a head start in your future career.

Courses in this area are recognised by the following bodies. For accreditation for a specific course, see our full prospectus online.



'For me, the best part of doing a masters is getting to explore new skills and research in something I'm really passionate about, while being supported by the best lecturers and staff.'

Laura Burden, MA Journalism

Global Communication and Media MA

On this course, you gain a broad understanding of modern media and communication and develop the skills you need for a career in these fields. You'll develop specialist knowledge, and become a researcher in your own right. Our advanced industry connections and research expertise will help you take the next step in your career.

Starts September/January

Full-time – 12 months
Part-time – 24 months

IELTS requirement

6.5 overall, with 5.5 in all skills

Home/EU fees

Full-time – £9,065 for the course
Part-time – £9,065 for the course

International fees

Full-time – £13,905 for the course

Full details

shu.ac.uk/h601

International Journalism MA

This course aims to provide an advanced education in the range of professional skills and knowledge necessary for a career in the global journalism industry, by enabling you to acquire the core skills for print, broadcast, magazine and online platforms.

Starts September

Full-time – 12 months
Part-time – 24 months

IELTS requirement

6.5 overall, with 5.5 in all skills

Home/EU fees

Full-time – £9,065 for the course
Part-time – £9,065 for the course

International fees

Full-time – £13,905 for the course

Full details

shu.ac.uk/h300

Multimedia Journalism MA

Achieve your aspirations to become an effective practitioner in multimedia journalism, with specialist writing skills, knowledge and expertise in reporting. If you are already working as a journalist, develop your career through advancing your knowledge and understanding of the latest trends and emerging technologies.

Starts September

Full-time – 12 months
Part-time – 24 months

IELTS requirement

6.5 overall, with 5.5 in all skills

Home/EU fees

Full-time – £9,065 for the course
Part-time – £9,065 for the course

International fees

Full-time – £13,905 for the course

Full details

shu.ac.uk/h602





‘My favourite thing about PR is how you can use it for good. I’m very glad I’m studying at Sheffield Hallam and I’m so grateful that I came here.’

Kaka Garnvwa, MA Public Relations

Public Relations
MA

This course allows you to develop a deep understanding and flair for PR. You'll attain industry knowledge and gain contacts as well as reinforce your skills with detailed theoretical grounding – leaving as an employable, experienced professional.

Starts September
Full-time – 12 months
Part-time – 24 months

Accredited by
Chartered Institute of Public Relations

IELTS requirement
6.5 overall, with 5.5 in all skills

Home/EU fees
Full-time – £9,065 for the course
Part-time – £9,065 for the course

International fees
Full-time – £13,905 for the course

Full details
shu.ac.uk/h302

Sports Journalism
MA

Sports journalism is one of the fastest growing areas in online media, and a major component of print and broadcast media. This is leading to an increasing demand for graduates with good journalistic and media skills and a sport-focused portfolio. This course will help you develop the practical skills and knowledge you need.

Starts September
Full-time – 12 months
Part-time – 24 months

IELTS requirement
6.5 overall, with 5.5 in all skills

Home/EU fees
Full-time – £9,065 for the course
Part-time – £9,065 for the course

International fees
Full-time – £13,905 for the course

Full details
shu.ac.uk/h303



PSYCHOLOGY



Our courses allow you to engage with specialist knowledge and research which will help you to meet your future career aspirations.



EXPERTISE

Our teaching staff conduct applied psychological research which informs current theory and practice.



EMPLOYABILITY

Some of our courses are accredited by the British Psychological Society, so you receive the most up-to-date training.

Courses in this area are recognised by the following body. For accreditation for a specific course, see our full prospectus online.



'I have the flexibility and opportunity to focus on things that interest me and research that further. It makes me think differently about the world and I've become more self-aware.'
Phoebe Hares, MSc Psychology

Clinical Cognitive Neuroscience MSc Prepare for an academic or industrial career which uses neuropsychological methods. This course introduces you to various topics in cognitive neuroscience and the development of perceptual and higher level cognitive functions across the lifespan. Starts September Full-time – 12 months Part-time – 24 months IELTS requirement 6.5 overall, with 6.0 in writing and 5.5 in all other skills Home/EU fees Full-time – £7,420 for the course Part-time – year 1 £4,950, year 2 £2,475 International fees Full-time – £13,905 for the course Part-time – £13,905 for the course Full details shu.ac.uk/h338	Developmental Psychology MSc Designed to give you a solid foundational knowledge, particularly in a developmental context, this course covers the core areas of psychology as identified by the British Psychological Society and provides a graduate basis for chartered membership of the society. Starts September Full-time – 12 months Part-time – 24 months Accredited by British Psychological Society IELTS requirement 6.5 overall, with 6.0 in writing and 5.5 in all other skills Home/EU fees Full-time – £7,420 for the course Part-time – year 1 £4,950, year 2 £2,475 International fees Full-time – £13,905 for the course Part-time – £13,905 for the course Full details shu.ac.uk/h339	Forensic Psychology MSc Study the application of psychological theory to practice, including investigative psychology, the role of psychology within criminal justice processes, and how offenders are assessed and treated. Previous graduates have gone on to work for the police, the Home Office, the prison service, victim support and secure hospitals. Starts September Full-time – 12 months Part-time – 24 months Accredited by British Psychological Society IELTS requirement 6.5 overall, with 6.0 in writing Home/EU fees Full-time – £7,420 for the course Part-time – year 1 £2,475, year 2 £4,950 International fees Full-time – £13,905 for the course Part-time – £13,905 for the course Full details shu.ac.uk/h340
---	--	--



'The teaching staff were really knowledgeable and their passion was infectious. This course was the stepping stone I needed to progress to PhD level.'
Emma Finch, MSc Forensic Psychology

**Health Psychology
MSc**

This course provides you with the skills to progress onto Stage 2 Health Psychology training, including the British Psychological Society-accredited Doctoral Programme in Health Psychology. This means you can register as a practitioner health psychologist with the Health and Care Professions Council.

Starts September
Full-time – 12 months
Part-time – 24 months

Accredited by
British Psychological Society

IELTS requirement
6.5 overall, with 6.0 in writing and 5.5 in all other skills

Home/EU fees
Full-time – £7,420 for the course
Part-time – year 1 £4,950, year 2 £2,475

International fees
Full-time – £13,905 for the course
Part-time – £13,905 for the course

Full details
shu.ac.uk/h341

**Psychology
MSc**

This course is suitable for individuals returning to study or those seeking to explore psychology for the first time. It allows you to acquire the knowledge and scientific understanding of the core facets of psychology. It's accredited by the British Psychological Society and provides the graduate basis for chartered membership of the society.

Starts September
Full-time – 12 months
Part-time – 24 months

Accredited by
British Psychological Society

IELTS requirement
6.5 overall, with 6.0 in writing and 5.5 in all other skills

Home/EU fees
Full-time – £7,420 for the course
Part-time – year 1 £4,950, year 2 £2,475

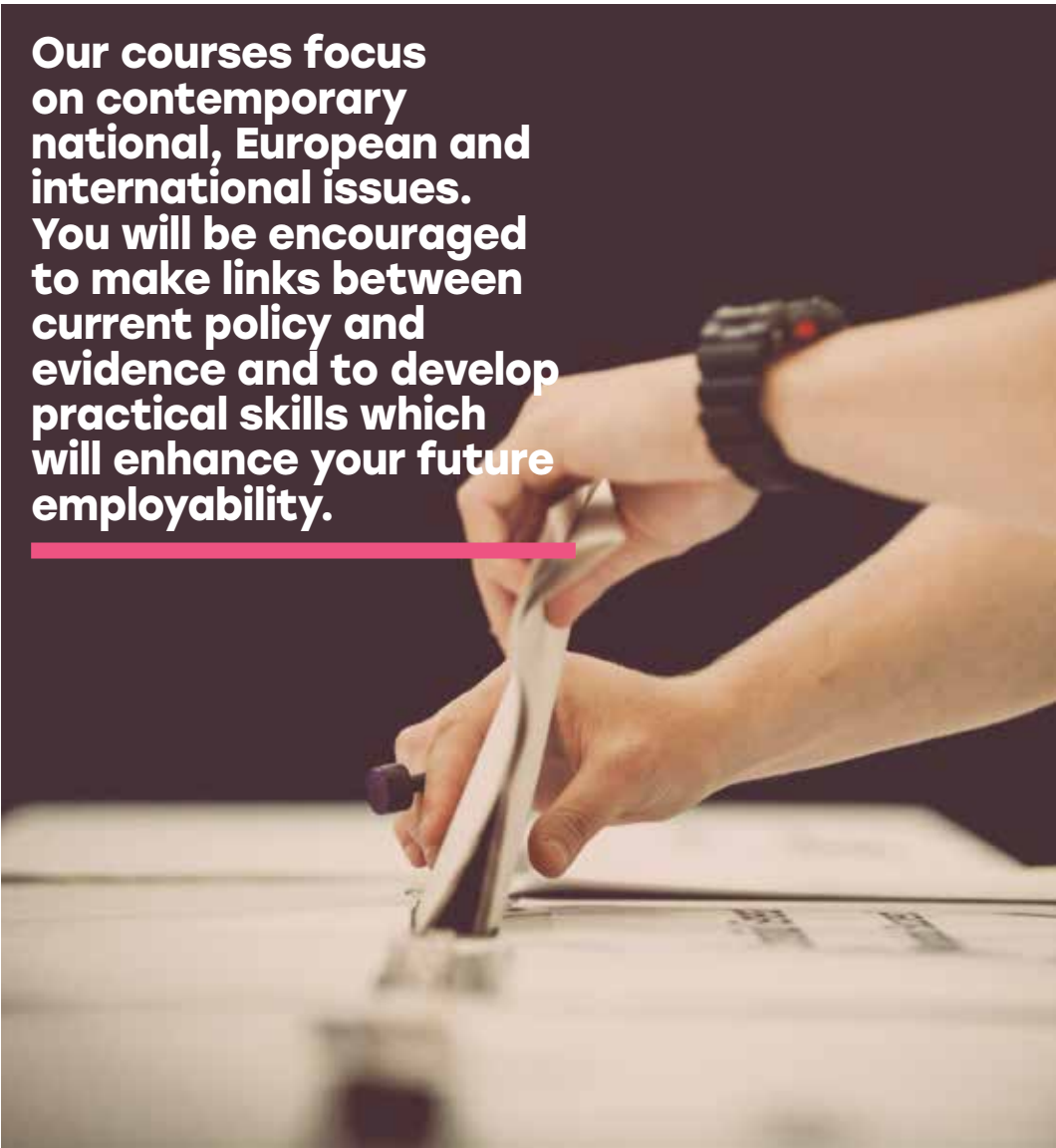
International fees
Full-time – £13,905 for the course
Part-time – £13,905 for the course

Full details
shu.ac.uk/h342



SOCIOLOGY AND POLITICS

Our courses focus on contemporary national, European and international issues. You will be encouraged to make links between current policy and evidence and to develop practical skills which will enhance your future employability.



EXPERTISE

We have excellent links with businesses and organisations across Sheffield and beyond. By sharing our expertise and carrying out consultancy, we have a real impact in our local community and on your learning.

EMPLOYABILITY

We'll make sure you gain the skills employers want, like problem-solving, and how to handle and analyse data.



'I have the opportunity to apply my past experiences to the research methodologies and philosophical frameworks taught on my course. I've found it very rewarding.'

Peter Mansbridge, MSc Social Science

<p>International Relations and Global Crises MA</p> <p>Explore contemporary perspectives, concepts and events that challenge how knowledge about international relations is produced and how crises can be overcome. Study contemporary topics including the resurgence of populist nationalism, international terrorism, regional and national cohesion and insecurity, war and conflict, and peace-making.</p> <p>Starts September Full-time – 12 months</p> <p>IELTS requirement 6.5 overall, with 6.0 in writing</p> <p>Home/EU fees £7,420 for the course</p> <p>International fees £13,905 for the course</p> <p>Full details shu.ac.uk/h628</p>	<p>Public Health MSc</p> <p>If you work or want to work at an operational, managerial or strategic level in public health, this course is for you. You explore the links between policy, evidence and practice and address key questions in healthcare, developing knowledge in key competencies necessary to join the UK Voluntary Register for Public Health Specialists.</p> <p>Starts September Full-time – 18 months Part-time – 36 months</p> <p>IELTS requirement 6.5 overall, with 6.0 in writing and 5.5 in all other skills</p> <p>Home/EU fees Full-time – £7,420 for the course Part-time – £7,420 for the course</p> <p>International fees Full-time – £13,905 for the course Part-time – £13,905 for the course</p> <p>Full details shu.ac.uk/h629</p>	<p>Social Science MRes</p> <p>Learn fundamental research methodologies in preparation for work in sociology, social policy, and governmental and commercial organisations. You focus on research specialisms encompassing sociology, social policy, politics, criminology, education studies, urban studies, youth studies and cultural studies.</p> <p>Starts September Full-time – 12 months Part-time – 24 months</p> <p>IELTS requirement 6.5 overall, with 6.0 in writing and 5.5 in all other skills</p> <p>Home/EU fees Full-time – £7,420 for the course Part-time – £3,710 per year</p> <p>International fees Full-time – £13,905 for the course Part-time – £13,905 for the course</p> <p>Full details shu.ac.uk/h358</p>
--	--	---



SPORT AND PHYSICAL ACTIVITY

Working with some of the biggest sports organisations in the country, we provide high quality education to over 1,500 students. Our MA Sports Management course is rated 1st in the UK and 4th in Europe.



EXPERTISE

You'll be taught by lecturers who conduct world-class research. We're in the top 10 modern universities in the UK for sport research.



FACILITIES

Our satellite campus, the English Institute of Sport Sheffield, is a world-class sports facility used by Hallam students and many of Team GB's top athletes.

Courses in this area are recognised by the following bodies. For accreditation for a specific course, see our full prospectus online.



'My job is to get athletes fitter, faster and stronger. I need to be able to evaluate research and apply it to a gym setting. To do this at a high level, you need the masters degree.'

Jordan Webster, MSc Applied Sport and Exercise Science

Advanced Sport Coaching Practice
MSc

If you are an experienced high performing coach working with children or adults and want to develop your expertise, or a performance coach working with talent, this course enables you to further develop and apply your knowledge, skills and competencies in your sport coaching environment.

Starts September
Part-time – 36 months

IELTS requirement
6.0 overall, with 5.5 in all skills

Home/EU fees
£7,420 for the course

Full details
shu.ac.uk/h372

Advanced Sport Coaching Practice
PgDip

If you are an experienced coach working with children or adults and want to develop your expertise, or a performance coach working with talent, this course enables you to further develop and apply your knowledge, skills and competencies in your sport coaching environment.

This is a shorter version of the MSc Advanced Sport Coaching Practice (see above).

Starts September
Part-time – 24 months

IELTS requirement
6.0 overall, with 5.5 in all skills

Home/EU fees
£4,950 for the course

Full details
shu.ac.uk/h377

Applied Sport and Exercise Science
MSc

Develop strong technical, analytical, practical and professional skills, alongside specialist skills in biomechanics and performance analysis, physiology and nutrition, and strength and conditioning. We offer first-class research and teaching labs alongside excellent facilities offered by our partner venue the English Institute of Sport.

Starts September
Full-time – 12 months
Part-time – 23 months

IELTS requirement
6.0 overall, with 5.5 in all skills

Home/EU fees
Full-time – £7,420 for the course
Part-time – £7,420 for the course

International fees
Full-time – £13,905 for the course

Full details
shu.ac.uk/h373

Sport and Exercise Psychology
MSc

If you hold the British Psychological Society Graduate Basis for Chartered Membership, this course will support you along the path to becoming a chartered sport and exercise psychologist. Learn to understand the role of psychological interventions for sport performers, coaches and teams.

Starts September
Full-time – 12 months
Part-time – 22 months

Accredited by
British Psychological Society

IELTS requirement
6.0 overall, with 5.5 in all skills

Home/EU fees
Full-time – £7,420 for the course
Part-time – £7,420 for the course

International fees
Full-time – £13,905 for the course

Full details
shu.ac.uk/h374

Sport Business Management MSc

This course builds upon your existing experience or qualifications and equips you for an exciting career in sport. You'll learn the ins and outs of this ever-growing industry, gaining the contacts, skills and credentials that you need to make an impact in it.

Starts September/January
Full-time – 12 months
Part-time – 23 months

IELTS requirement
6.0 overall, with 5.5 in all skills

Home/EU fees
Full-time – £8,240 for the course
Part-time – £8,240 for the course

International fees
Full-time – £15,450 for the course

Full details
shu.ac.uk/h375

Sports Engineering MSc

More than ever, the world of sport is intimately connected to new technologies. The global sports equipment industry is valued at £200 billion annually and is driven by new research and innovation. Learn how to use your engineering skills to succeed in this industry.

Starts September
Full-time – 12 months
Part-time – 22 months

IELTS requirement
6.0 overall, with 5.5 in all skills

Home/EU fees
Full-time – £9,065 for the course
Part-time – £7,420 for the course

International fees
Full-time – £13,905 for the course

Full details
shu.ac.uk/h376

Strength and Conditioning Coaching MSc

Prepare for a career in this fast-developing sports profession. You analyse and evaluate the physical elements of sport performance, and develop tailored strength and conditioning interventions. You'll learn to evaluate evidence-based coaching models to develop an athlete-centred approach to your coaching.

Starts September
Full-time – 12 months
Part-time – 20 months

IELTS requirement
6.0 overall, with 5.5 in all skills

Home/EU fees
Full-time – £7,420 for the course
Part-time – £7,420 for the course

International fees
Full-time – £13,905 for the course

Full details
shu.ac.uk/h637



TEACHING AND EDUCATION



Sheffield Institute of Education is a national centre of excellence and innovation in teaching and learning and one of the biggest providers of teacher education in the UK.

EXPERTISE

In 2017 our early years and primary teacher training was rated Outstanding by Ofsted – the first ever such rating for early years teacher training.

EMPLOYABILITY

Our network of over 600 partner schools, colleges and other educational establishments give you lots of opportunities to gain valuable work experience.



‘I work with children at a time in their life when I can have a profound impact on their development. You return to your first placement at the end of the year, so you can see how those children have grown.’

Jodie Edward, PGCE Early Childhood Education and Care (0–5)

Autism and Asperger Syndrome PgCert

This course is suitable if you are autistic or have an Asperger Syndrome identification, you are a parent or carer, or you are a professional who works with individuals with an autism diagnosis. It covers a range of theories and relates them to the lived experiences of autistic children and adults.

Starts November/June
Part-time – 12 months

IELTS requirement
6.5 overall, with 6.5 in reading and writing

Home/EU fees
£2,475 for the course

International fees
£4,635 for the course

Full details
shu.ac.uk/h421

Autism Spectrum MA

Take advantage of academic, professional, and personal development opportunities in the practice of living or working with autistic people across all ages. You engage in informed critical reflection to influence practice and policy by drawing on theoretical and research literatures, policy and practitioner networks.

Starts September
Part-time – 36 months

IELTS requirement
6.5 overall, with 6.5 in reading and writing

Home/EU fees
£7,420 for the course

International fees
£13,905 for the course

Full details
shu.ac.uk/h393

Early Childhood Education and Care (0–5) with Early years Teacher Status PGCE

This course is for graduates employed in an early years setting or school, or graduates with limited experience of working with children aged 0–5. Your studies are based around extended placements or your own workplace to give you the confidence, skills and experience to work across the age group.

Starts September
Full-time – 12 months
Part-time – 12 months

IELTS requirement
7.0 overall, with 6.5 in all skills

Home/EU fees
This course is fully funded by the Department of Education. Go to shu.ac.uk/h397 to see if you're eligible to apply.

Full details
shu.ac.uk/h397

Early years and Primary Education (3–7) with Qualified Teacher Status PGCE

This course equips you with the skills needed for the demanding task of teaching 3–7-year-old children in nurseries and infant schools. We offer the course in partnership with local and regional primary, infant and nursery schools.

Starts September
Full-time – 12 months

IELTS requirement
7.0 overall, with 6.5 in all skills

Home/EU fees
See website for details

International fees
£13,905 for the course

Full details
shu.ac.uk/h398



‘The course really throws you in at the deep end, but there’s so much support from your tutors, course mates and your placement mentors to help you become a great teacher.’

Kebba Jenkins, PGCE Post-16 Education



‘I love the range of subjects that we can teach in primary school. English is my specialism but I really enjoy PE, art and geography too. If you’re creative with how you teach, it’s so enjoyable.’

Janefia Khan, PGCE Primary Education with QTS (5–11)

Education MA This course is designed to extend your critical understanding of education in its broadest sense. You focus your studies on your interests, including any age of education. Explore contemporary debates and develop employability skills that link closely to your education specialism and career aims. Starts September Full-time – 12 months IELTS requirement 6.5 overall, with 6.0 in writing and 5.5 in all other skills Home/EU fees £7,420 for the course International fees £13,905 for the course Full details shu.ac.uk/h394	Post-16 and Further Education PGCE Gain the qualification you need to teach in the area of post-16 and further education. This course is for you if you are new to teaching and need us to find you a placement, or you are already working as a teacher or trainer and want to become qualified. Starts September Full-time – 12 months IELTS requirement 7.0 overall, with 6.5 in all skills Home/EU fees See website for details International fees £13,905 for the course Full details shu.ac.uk/h399
Higher Education Practice UAPC (University Advanced Professional Certificate) This course is suitable if you work in a student-facing role in higher education, whether you are experienced or newly appointed. It is designed to develop your career in higher education, both in terms of effectiveness in your role and your career progression. Starts July Part-time – 5 months IELTS requirement 7.0 overall, with 6.5 in all skills Home/EU fees £1,650 for the course International fees £2,320 for the course Full details shu.ac.uk/h425	Primary Education (5–11) Physical Education Specialist with Qualified Teacher Status PGCE This course prepares you for a career as a skilled primary teacher, specialising in physical education. As well as dedicated PE tuition, you gain an up-to-date knowledge of core Key Stage 1 and 2 subjects including English, science and mathematics. Starts August Full-time – 12 months IELTS requirement 7.0 overall, with 6.5 in all skills Home/EU fees See website for details International fees £13,905 for the course Full details shu.ac.uk/h401

Primary Education (5–11) with Qualified Teacher Status PGCE This course allows you to meet the demands of primary education. You’ll gain a thorough understanding of current science, English and mathematics teaching, and spend 120 days in local schools to cement your knowledge. Starts September Full-time – 12 months IELTS requirement 7.0 overall, with 6.5 in all skills Home/EU fees See website for details International fees £13,905 for the course Full details shu.ac.uk/h402	Professional Practice in Education MA This course is designed for teachers, early years workers and related professionals in full-time or substantial roles in schools, colleges and educational settings. You improve your practice through critical reflection and professional enquiry, ultimately leading to enhanced career prospects. Starts September/January Part-time – 36 months IELTS requirement 6.5 overall, with 6.0 in writing and 5.5 in all other skills Home/EU fees £7,420 for the course International fees £13,905 for the course Full details shu.ac.uk/h642	Secondary Education with Qualified Teacher Status PGCE Train for a rewarding career in secondary teaching, including 120 days of school-based training in two different school settings. Specialise in one of the following subjects: <ul style="list-style-type: none">• art and design • business education • citizenship • computing • design and technology • design and technology (textiles) • engineering • English • geography • history • mathematics • modern foreign languages • physical education • religious education • biology • chemistry • physics Starts August Full-time – 12 months IELTS requirement 7.0 overall, with 6.5 in all skills Home/EU fees See website for details International fees £13,905 for the course Full details shu.ac.uk/pgcesec
--	---	---





'I found the teacher development and analysing language modules to be highly interesting. It has really enhanced my teaching abilities in the classroom and the wider TESOL community.'

Jonathan Ashmore, MA TESOL

Special Educational Needs Co-ordination (National Award for SEN Co-ordination) PgCert

This course has been developed for those currently working as, or aspiring to be, special educational needs coordinators (SENCOs) and is mandatory for all SENCOs appointed since 2008. You'll reflect upon, analyse and discuss current issues of education, supported by experienced special educational needs professionals.

Starts September
Part-time – 12 months

Accredited by
Accredited by National Award for SEN Coordination

Home/EU fees
£2,475 for the course

Full details
shu.ac.uk/h423

Teaching English to Speakers of Other Languages MA

Whether you are in the early stages of your language teaching career or an experienced language teacher, study as part of a community of expert teachers, teacher trainers and language learners.

You focus on specific areas in TESOL – such as English for academic purposes, or teaching young learners – and the flexible research project encourages you to specialise in a topic of your choice.

Starts September
Full-time – 12 months

IELTS requirement
6.5 overall, with 6.0 in all skills

Home/EU fees
£7,420 for the course

International fees
£13,905 for the course

Full details
shu.ac.uk/h644

Teaching in Higher Education PgCert

This course is aimed at both experienced and newly appointed higher education academic staff. Studying part-time, with flexible start dates to fit around your other commitments, you'll develop an informed, reflective and self-critical approach to learning, teaching and assessment, enhancing your skills as a practitioner in higher education.

Starts September/January
Part-time – 12 months

IELTS requirement
7.0 overall, with 6.0 in all skills

Home/EU fees
£3,300 for the course

International fees
£4,635 for the course

Full details
shu.ac.uk/h641



TOURISM AND HOSPITALITY



Our tourism and hospitality courses combine practical and academic understanding to help you succeed in the travel, tourism and hospitality industries.

**EMPLOYABILITY**

Our students have gained work experience in hotels and resorts across America, Spain, France, Dubai and the Maldives, and with big names such as Hilton Worldwide, Disneyland and TUI.

**EXPERTISE**

Our staff are in demand for their industry expertise. Many have national and international research reputations spanning a range of themes.

Courses in this area are recognised by the following bodies. For accreditation for a specific course, see our full prospectus online.



'I chose Sheffield Hallam because of its high ranking for hospitality and tourism. There's a lot of independent research which really challenges you to develop.'

Saskia Möhn, MSc International Hospitality and Tourism Management

Hospitality Management with Nutrition MSc <p>Healthy eating trends are increasingly prominent in the hospitality industry and there is the need for graduates with a nutrition specialism. Our focus is on providing you with the knowledge and skills to be able to design and implement a business strategy focused around health and nutrition. This course offers an optional work experience route including a 12-month work placement.</p> Starts September Full-time – 12 months Full-time with work placement – 24 months Part-time – 24 months	International Hospitality and Tourism Management MSc <p>Gain the skills and knowledge required to plan, manage and promote products and services, businesses and destinations in the international hospitality and tourism industries. This course prepares you for a career in management and senior management positions and offers an optional work experience route including a 12-month work placement.</p> Starts September/January Full-time – 12/15 months Full-time with work placement – 24 months Part-time – 24 months	International Hospitality Management MSc <p>Gain the theoretical background, skills and experiences necessary to become a successful leader in the hospitality industry. You learn management theories and specialised aspects of the hospitality business, applying concepts to problems and issues in the international hospitality industry. This course offers an optional work experience route including a 12-month work placement.</p> Starts September/January Full-time – 12/15 months Full-time with work placement – 24 months Part-time – 24 months
IELTS requirement Work placement route – 6.5 overall, with 6.0 in all skills Non-work placement route – 6.0 overall, with 5.5 in all skills	Accredited by Institute of Hospitality	Accredited by Institute of Hospitality
Home/EU fees Full-time – £8,240 (or £9,065 with work placement) for the course Part-time – £8,240 for the course	IELTS requirement Work placement route – 6.5 overall, with 6.0 in all skills Non-work placement route – 6.0 overall, with 5.5 in all skills	IELTS requirement Work placement route – 6.5 overall, with 6.0 in all skills Non-work placement route – 6.0 overall, with 5.5 in all skills
International fees Full-time – £13,905 (or £15,450 with work placement) for the course	Home/EU fees Full-time – £8,240 (or £9,065 with work placement) for the course Part-time – £8,240 for the course	Home/EU fees Full-time – £8,240 (or £9,065 with work placement) for the course Part-time – £8,240 for the course
Full details shu.ac.uk/h649	International fees Full-time – £13,905 (or £15,450 with work placement) for the course	International fees Full-time – £13,905 (or £15,450 with work placement) for the course
	Full details shu.ac.uk/h439	Full details shu.ac.uk/h440 shu.ac.uk/h441 (work placement route)



International Tourism Management MSc

The tourism industry accounts for one in twelve jobs globally. Such growth cannot take place without a talented and highly-skilled workforce trained to the highest standards. This course has been specifically designed to prepare graduates for management and senior management positions in this complex, dynamic and fast-growing industry. This course offers an optional work experience route including a 12-month work placement.

Starts September/January

Full-time – 12/15 months
Full-time with work placement – 24 months
Part-time – 24 months

IELTS requirement

Work placement route – 6.5 overall, with 6.0 in all skills
Non-work placement route – 6.0 overall, with 5.5 in all skills

Home/EU fees

Full-time – £8,240 (or £9,065 with work placement) for the course
Part-time – £8,240 for the course

International fees

Full-time – £13,905 (or £15,450 with work placement) for the course

Full details

shu.ac.uk/h442

International Tourism and Aviation Management MSc

The tourism and aviation sectors form one of the most exciting and fastest-growing industries globally. This course is designed to provide you with the theoretical background, skills and experiences necessary to become a successful leader in this dynamic field. This course offers an optional work experience route including a 12-month work placement.

Starts September

Full-time – 12/15 months
Full-time with work placement – 24 months
Part-time – 24 months

IELTS requirement

Work placement route – 6.5 overall, with 6.0 in all skills
Non-work placement route – 6.0 overall, with 5.5 in all skills

Home/EU fees

Full-time – £8,240 (or £9,065 with work placement) for the course
Part-time – £8,240 for the course

International fees

Full-time – £13,905 (or £15,450 with work placement) for the course

Full details

shu.ac.uk/h654
shu.ac.uk/h655 (work placement route)



MASTERS DEGREE APPRENTICESHIPS

Gain a masters-level qualification while you work.



What are masters degree apprenticeships?

Masters degree apprenticeships are innovative, hands-on ways to gain a masters-level qualification, from MBAs to our MSc Digital and Technology Solutions. You combine studying at Sheffield Hallam with your existing job, and your employer pays the course fees. You'll get to apply new thinking and skills within your workplace, leading the way for your colleagues to progress and develop.

Why choose an apprenticeship?

It's the best of both worlds. You gain an industry-recognised qualification while staying in your job, and there are no course fees to pay. You'll boost your career prospects and your earning potential too, while creating positive organisational change.

Why choose Sheffield Hallam?

Our National Centre of Excellence for Degree Apprenticeships is one of the UK's leading providers of degree apprenticeships. You'll get expert advice from a work-based learning coach to help you balance study and employment throughout your apprenticeship.

'I love the lightbulb moments'



CANDY REDFERN

MBA apprentice and head of learning and talent development at Bidfood UK



There is a requirement to complete 20% of an apprenticeship with off-the-job learning but I still very much see it as being 'on-the-job' – I look for stretching opportunities to support the link between work and study. I love the lightbulb moments that come to me in lectures, and I love being able to implement new ideas as soon as I get back to the office.

What has made the experience even better is learning with a fantastic mix of people from other businesses. I have never been to university so

I love the fact I am on campus, and in a centre for learning. All of the lecturers are engaging, approachable and really know their stuff, and the resources are second to none.

The apprenticeship is helping me to develop a greater understanding of business, and allowing me to look at factors that may be challenging us and how my department could help resolve them. In the past I've shied away from areas such as finance, but now I feel I have a valuable place at the table.

Qualification	Course title	Page
MSc	Accounting and Finance	85
MSc	Accounting and Finance – ACCA fast track route	85
MSc	Acute Care of the Child and Their Family	131
MSc	Advanced Clinical Practice	131
MSc	Advanced Clinical Practice (Image Interpretation)	131
MSc	Advanced Clinical Practice (Musculoskeletal Management)	132
MSc	Advanced Clinical Practice (Radiotherapy and Oncology)	132
MSc	Advanced Computer Networks	103
MSc	Advanced Engineering and Management	115
MSc	Advanced Mechanical Engineering	115
MSc	Advanced Sport Coaching Practice	157
PgDip	Advanced Sport Coaching Practice	157
MSc	Advancing Professional Practice	132
MSc/ MRes	Analytical Chemistry	95
MA	Animation and Digital Effects	113
MA	Applied Human Rights	141
LLM	Applied Human Rights	141
MSc	Applied Sport and Exercise Science	157
PgCert	Approved Mental Health Professional	132
MArch	Architecture	89
MA	Arts and Cultural Management	91
PgCert	Autism and Asperger Syndrome	161
MA	Autism Spectrum	161
MSc	Automation Control and Robotics	115
MSc	Banking and Finance	85
MSc	Big Data Analytics	103
MSc/MRes	Biomedical Laboratory Sciences	95
MSc	Branding and Consumer Behaviour	99
MSc	Building Surveying	107
MRes	Business	99
PgCert	Business Administration (Facilities Management)	99
MSc/MRes	Cancer Biology	95
MSc	Child, Adolescent and Family Mental Health	133
MSc	Clinical Cognitive Neuroscience	151
MSc	Coaching and Mentoring	99
MSc	Computing	103
MSc	Construction Project Management	107
PgCert	Cooperative Leadership and Social Entrepreneurship	100

Qualification	Course title	Page
MA	Creative Writing	119
MSc	Criminology and Criminal Justice Practice	111
MSc	Cyber Security	104
MA	Design	91
MFA	Design	91
MSc	Developmental Psychology	151
MSc	Dietetics (pre-registration)	133
MA	Digital Media Management	113
PGCE	Early Childhood Education and Care (0–5) with Early years Teacher Status	161
PGCE	Early years and Primary Education (3–7) with Qualified Teacher Status	161
MA	Education	162
MSc	Electrical and Electronic Engineering	116
MSc	Enhanced Diagnostic Imaging Practice	133
MSc	Enhanced Radiotherapy and Oncology Practice	133
MSc	Entrepreneurship	100
MSc	Environmental Management	129
MBA	Executive MBA	143
MBA	Executive MBA (Cooperative Leadership and Social Entrepreneurship)	143
MBA	Executive MBA (Facilities Management)	143
MBA	Executive MBA (Hospitality Management)	144
MA	Filmmaking	113
MSc	Finance and Investment	86
MSc	Financial Management	86
MSc	Financial Management – CIMA fast track route	86
MA	Fine Art	92
MFA	Fine Art	92
MSc	Food and Nutrition Sciences	125
MSc	Food Consumer Marketing and Product Development	125
MSc	Forensic Accounting	87
MSc	Forensic Psychology	151
MA	Games Design	113
MSc	Games Software Development	104
MSc	Geographical Information Systems	129
MA	Global Communication and Media	147
MSc	Health and Social Care Education	134
MSc	Health and Social Care Leadership	134

Qualification	Course title	Page
MRes	Health and Wellbeing	134
MSc	Health Psychology	152
UAPC	Higher Education Practice	162
MSc	Hospitality Management with Nutrition	167
MSc	Human Resource Management	100
MSc	Information Technology Management	104
MSc	International Business and Human Resource Management	100
MSc	International Business and Marketing	101
MSc	International Business Management	101
MSc	International Events and Conference Management	121
MSc	International Hospitality and Tourism Management	167
MSc	International Hospitality Management	167
MSc	International Human Resource Management	101
MA	International Journalism	147
MSc	International Marketing	101
MA	International Relations and Global Crises	155
LLM	International Sports Law in Practice	141
MSc	International Tourism and Aviation Management	168
MSc	International Tourism Management	168
LLM	Legal Professional Practice	141
MSc	Logistics and Supply Chain Management	116
PgCert	Mass Spectrometry	96
MBA	Master of Business Administration	144
MBA	MBA (Industrial Management)	144
MSc	Medical Ultrasound Practice	134
MSc/MRes	Molecular Microbiology	96
MA	Multimedia Journalism	147
MSc	Nursing (Adult)	135
MSc	Nursing (Child)	135
MSc	Nursing (Mental Health)	135
MSc	Nursing (Public Health)	136
MSc	Nursing Studies	136
MSc	Nutrition for Sport and Exercise	126
MSc	Nutrition with Obesity and Weight Management	125
MSc	Nutrition with Public Health Management	126
MSc	Occupational Therapy (Pre-Registration)	136
MA	Performance Practice	123
MSc/MRes	Pharmaceutical Analysis	96

Qualification	Course title	Page
MSc/MRes	Pharmacology and Biotechnology	97
MA	Photography	113
MSc	Physiotherapy (Pre-Registration)	137
PGCE	Post-16 and Further Education	162
PGCE	Primary Education (5–11) Physical Education Specialist with Qualified Teacher Status	162
PGCE	Primary Education (5–11) with Qualified Teacher Status	163
MA	Professional Practice in Education	163
MSc	Prostate Cancer Care	137
MSc	Psychology	152
MSc	Public Health	155
MA	Public Relations	148
MSc	Quantity Surveying	108
MSc	Radiotherapy Planning Practice	137
MSc	Real Estate	108
PGCE	Secondary Education with Qualified Teacher Status	163
MRes	Social Science	155
MSW	Social Work	138
PgCert	Special Educational Needs Co-ordination	164
PgDip	Specialist Community Public Health Nursing (Health Visitor)	138
PgDip	Specialist Community Public Health Nursing (School Nursing)	138
MSc	Specialist Physiotherapy Practice	138
MSc	Specialist Practice District Nursing	138
PgDip	Specialist Practice District Nursing	138
MSc	Sport and Exercise Psychology	157
MSc	Sport Business Management	158
MSc	Sports Engineering	158
MA	Sports Journalism	148
MSc	Strategic Events Marketing	121
MSc	Strength and Conditioning Coaching	158
MSc	Supportive, Palliative and End of Life Care	139
MA	Teaching English to Speakers of Other Languages	164
PgCert	Teaching in Higher Education	164
MSc	Technical Architecture	89
MSc	Urban Planning	129
MSc	Vocational Rehabilitation	139
MSc	Wealth Management	87

TERMS AND CONDITIONS

You can download the full terms and conditions, student regulations and other important information about the University's student contracts at shu.ac.uk/terms

If you want a paper copy of any of these contractual documents, contact Student and Academic Services, City Campus, Sheffield Hallam University, Howard Street, Sheffield S1 1WB, or phone **0114 225 5555**.

Queries and complaints

Queries about the terms and conditions should be addressed to the University Secretary, City Campus, Sheffield Hallam University, Howard Street, Sheffield, S1 1WB, who shall be responsible for determining any matters of interpretation.

If you have any queries, concerns or complaints relating to the processing of your application, please contact the Admissions Office, City Campus, Sheffield Hallam University, Howard Street, Sheffield S1 1WB.

The University has a students' complaints procedure, which is available from the University Secretary and at shu.ac.uk/regulations

Accuracy of information

We made every reasonable effort to ensure that the information in this prospectus was accurate at the time of going to press in June 2019. However, we regularly review our courses and associated support services and these may change from time to time. We strongly recommend you visit our website to check the current position on courses and services.

Some courses have professional body accreditation, which may expire during the lifetime of this publication. To check the latest information, please see the online full course entries at shu.ac.uk/prospectus

The role of the Students' Union

The Students' Union is the voice of students in the University, and students are represented at all levels up to the Board of Governors.

Working in partnership with the University, the Students' Union coordinates the highly effective Student Representation System by providing training and support to Course and Department Reps. Within a few weeks of joining the University, you will be given the opportunity to become a Course Rep – representing the views of your course mates to staff and shaping your course. The Students' Union also has an advice centre, which supports students with individual academic issues.

Students' Union membership: Education Act 1994

Under the provisions of the Education Act 1994, any student has the right not to be a member of the Students' Union and not to be unfairly disadvantaged with regard to the provision of services, or otherwise, by reason of having exercised that right.

At Sheffield Hallam University all students, members and non-members alike, have in general the right of access to services provided by the University and the Sheffield Hallam University Union of Students (also known as the Students' Union).

However, the right to participate in the Students' Union and NUS (National Union of Students) elections and decision-making processes, including those of clubs and societies, is not extended to non-members.

On the basis of the above arrangements, the University is satisfied that the range of services otherwise provided by the University and the Students' Union to students (whether members of the union or not) are sufficient to ensure that non-members are not unfairly disadvantaged within the meaning of the Act.

ANY QUESTIONS?

For UK students

Phone: **+44 (0)114 225 5555**
Email: admissions@shu.ac.uk

For international/EU students

Phone: **+44 (0)114 225 5555**
Email: international@shu.ac.uk

For enquiries about research degrees

Find contact details for our research centres at shu.ac.uk/research

Our offices

Sheffield Hallam University

City Campus, Howard Street
Sheffield, S1 1WB, UK

Phone: **+44 (0)114 225 5555**
Email: enquiries@shu.ac.uk

Africa Office

Sheffield Hallam University
3rd floor, 76 Opebi Road, Ikeja
Lagos, Nigeria

Phone: **+ 234 1 342 9855**
Email: africa@shu.ac.uk

China Office

Sheffield Hallam University
Room 606, Tower A, Fairmont Tower
Building 1, 33# Community
Guangshun North Street
Chaoyang District
Beijing, 100102, China

Phone: **+86 10 6471 3020**
Email: beijing@shu-china.cn

Pakistan Office

Sheffield Hallam University
H #43-B/1, Block G
Gulberg II
Lahore 54000, Pakistan

Phone: **+92 (0) 42 35759087**
Email: pakistan@shu.ac.uk

South Asia Office

Sheffield Hallam University
3rd Floor, Devika Tower, Nehru Place
New Delhi, 110019, India

Phone: **+91 (0)11 4212 4190**
Email: india@shu.ac.uk

South East Asia Office

Sheffield Hallam University
No.5 (2nd Floor)
Jalan SS15 / 7
47500 Subang Jaya
Selangor, Malaysia

Phone: **+60 35631 1328**
Email: seaoffice@shu.ac.uk

Visa support

For support with your visa application
Phone: **+44 (0)114 225 2222**
Email: internationalexperience@shu.ac.uk

For a full list of our registered international recruitment agents, visit shu.ac.uk/international/agents

