



# Study in one of the UK's best student cities

A guide to Sheffield Hallam University  
for exchange and study abroad students



# Welcome to Sheffield

NAMED THE  
**FRIENDLIEST  
CITY**  
IN THE UK IN 2017

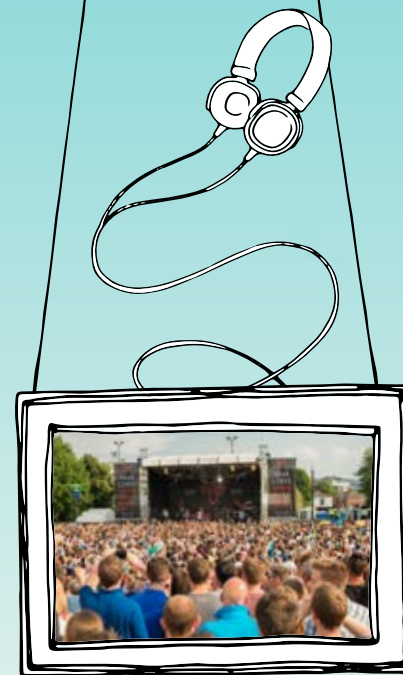
A THRIVING  
**INDEPENDENT  
SHOPPING  
SCENE**

ONE OF THE  
**UK'S LARGEST  
SHOPPING CENTRES**  
MEADOWHALL HAS  
NEARLY 300 STORES

FIVE  
**MULTISCREEN  
CINEMAS  
AND NINE  
ART GALLERIES**



HOME TO  
**MAJOR MUSIC  
AND FILM  
FESTIVALS**  
ATTRACTING OVER  
100,000 PEOPLE

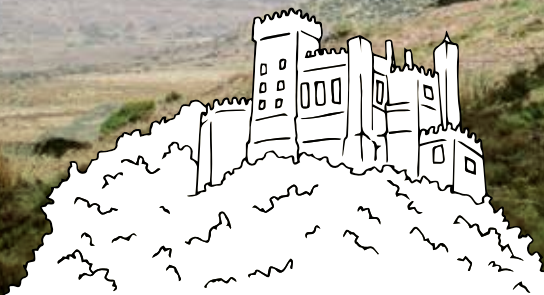


THE  
**LARGEST UK  
THEATRE  
COMPLEX**  
OUTSIDE OF LONDON



**WORLD-CLASS**  
CLIMBING, HIKING  
AND CYCLING

**SPECTACULAR  
HISTORIC  
BUILDINGS**  
INCLUDING  
CHATSWORTH HOUSE  
AND BOLSOVER CASTLE



AMONG THE  
**GREENEST  
CITIES  
IN EUROPE**



# Study abroad at Sheffield Hallam University

Enhance your studies and experience life in the UK as an exchange or study abroad student at Sheffield Hallam University. Meet new people and expand your horizons as you study with us for one semester or a full year.

As a university we are home to more than 31,000 students from over 120 countries, so as an exchange or study abroad student you'll benefit from being immersed in a diverse range of cultures and the opportunity to improve your language skills.

## Why do an exchange or study abroad?

Studying overseas is a unique and hugely beneficial experience that will stay with you for the rest of your life. You'll:

- Gain an in-depth understanding of life in the UK
- Improve your language skills
- See your subject from a different perspective
- Benefit from exposure to different cultures
- Enhance your resume – and your career prospects
- Increase your confidence, independence and life skills
- Make new friends
- Gain transferable credits

## What are my options?

### EXCHANGE

Sheffield Hallam is a great place to come if you want to do an exchange. We have been welcoming exchange students for many years and have both Erasmus+ and Non-Erasmus+ exchange agreements with over 100 institutions worldwide in a variety of subject areas.

If you are interested in studying with us on an exchange programme you will need to check that we have an exchange agreement with your university in the subject area you are studying and whether there are places available.

You will need to discuss any possible exchange with your exchange co-ordinator and/or staff in your international office before you complete an application.

Visit [www.shu.ac.uk/exchanges](http://www.shu.ac.uk/exchanges) for more information on our exchange programme.

### STUDY ABROAD

This is the ideal option for students studying at a university that does not have an exchange agreement in place with Sheffield Hallam University.

With our study abroad programme, you can study in Sheffield for one semester or a full year, and there is a huge range of routes available to suit your current studies. For a full list of subjects and routes please visit [www.shu.ac.uk/studyabroad](http://www.shu.ac.uk/studyabroad).

If you plan to study for one semester, you can choose from a September or January intake and on successful completion you'll be awarded an International Certificate in your chosen subject. If you'd like to come to Sheffield for a full year, you'll have a September start date and on successful competition you'll be awarded an International Diploma in your chosen subject.



## What are the entry requirements?

To apply to the study abroad programme, you'll need to be studying towards a degree at a recognised university, and have completed at least one year of your course. This means you will join us during or at the start of your second year of study. You will also need to provide evidence of your existing credits and proficiency in English.

## Can I take the credits back home?

You are able to gain transferable credits for your time in Sheffield. However, you will need to check that your home institution will accept these as credits towards your degree.

## Visa requirements

Students from outside the EEA or Switzerland need a visa to study in the UK. You must hold a valid UK visa that entitles you to study at Sheffield Hallam University before you can begin your course with us.

Visas can take several weeks to come through once you've completed your application, so make sure you leave yourself plenty of time.

If you need support with your visa application, our student experience advisors can offer help via Skype and email. All information can be found in our welcome guide.



## Important dates

Submit your application by:

- 30 November for the January intake
- 31 July for the September intake

Application accepted after this date but will be processed on a case by case basis.

Apply for accommodation at Liberty Hall by:

- 1 August for the September intake
- 1 December for the January intake



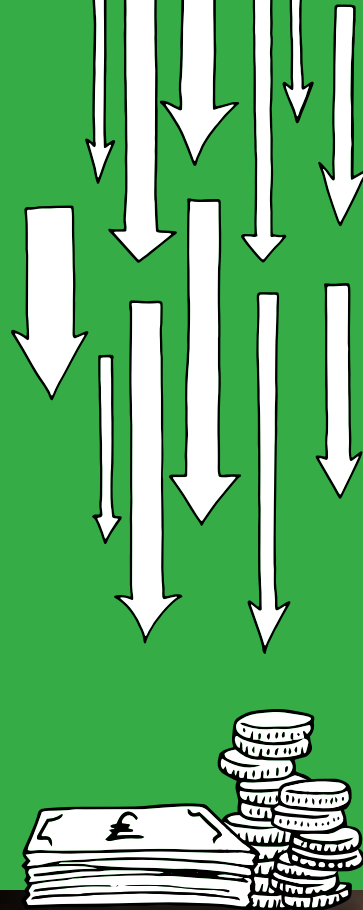
# What will it cost?

If you're an Erasmus or exchange student, you won't need to pay any additional tuition fees during your time in Sheffield. However, you will need to cover your own accommodation and living costs.

If you are a study abroad student, you'll need to pay tuition fees. More information on fees can be found online at [www.shu.ac.uk/studyabroad](http://www.shu.ac.uk/studyabroad).

## Living costs

Sheffield has a low cost of living compared to other major UK cities, meaning your money will go further. Living costs here are significantly lower than in London.



# Your new home

Don't worry about finding somewhere to stay during your time in Sheffield – we've already done it for you! We reserve places for those studying on an exchange or study abroad programme within our popular Liberty Hall complex.

Liberty Hall is located right in the city centre, so everything Sheffield has to offer will be right on your doorstep and you'll never be short of things to see and do. With great access to public transport, you'll easily be able to explore Sheffield and the surrounding area such as the Peak District.

Your place at Liberty Hall is guaranteed if you apply for your accommodation through our accommodation services by 1 August for the September intake and 1 December for the January intake.



## Affordable accommodation

Living at Liberty Hall is affordable - it costs less than half the price of renting a similar place in London. You'll also save on travel costs as the complex is centrally located, just a short walk from both the City and Collegiate Campus.



## Safe and secure

You'll always feel secure at Liberty Hall, thanks to the CCTV and 24-hour security. All our properties are inspected to ensure they comply with our strict standards.



## Make friends for life

Many of our exchange students build life-long friendships in our residences. From cups of tea with friends to late night movies, it's where some of the best university moments happen.



Find out more  
[www.shu.ac.uk/accommodation](http://www.shu.ac.uk/accommodation)



"The university arranged for me to see more than 10 houses – all in one day! I found one that I really love and I'm so happy there. My landlord is helpful and my housemates are all at Sheffield Hallam too."

**Nazli Mayuk**  
Film and screen studies student from Turkey

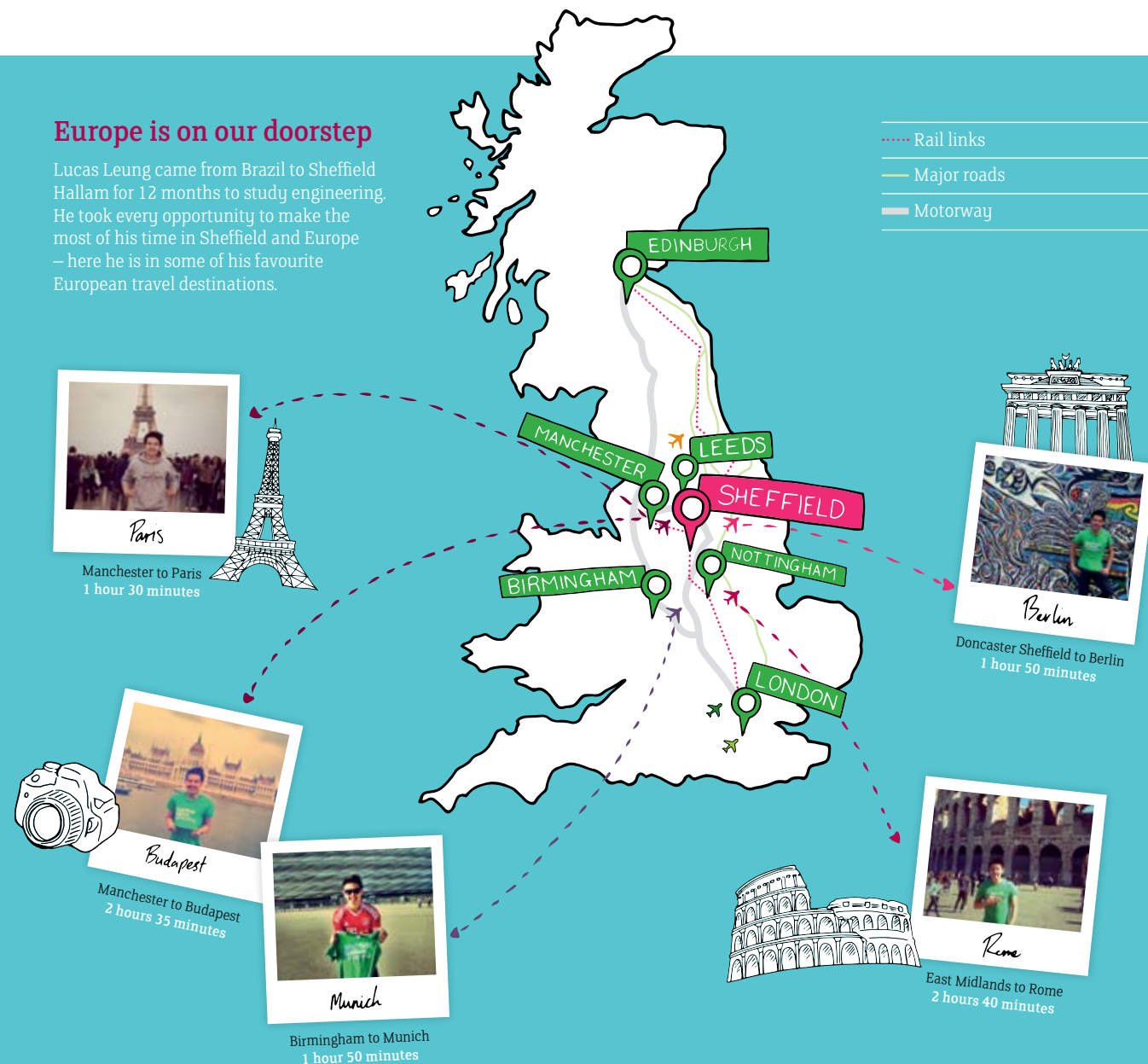
# Where is Sheffield?

We're right in the middle of the UK with excellent transport links to other UK cities and Europe. We are just two hours from London and one hour from Manchester by train.

Our City Campus is just a few minutes' walk from the city's main bus and train stations. There are student discounts available for bus, train and coach travel.

## Europe is on our doorstep

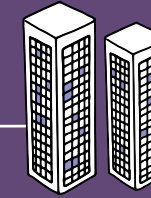
Lucas Leung came from Brazil to Sheffield Hallam for 12 months to study engineering. He took every opportunity to make the most of his time in Sheffield and Europe – here he is in some of his favourite European travel destinations.



# Hallam in numbers

60,000

Students living in Sheffield



65%

Research ranked internationally excellent or world-leading, putting us in the top five modern universities\*



24/7

Our libraries are open every day, 365 days per year



130

Institutions across the world where we have exchange agreements

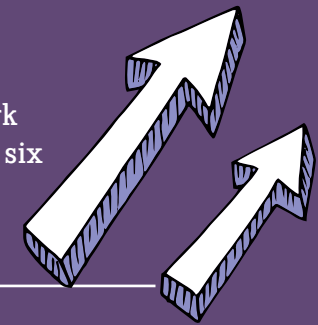
£100m

Invested in facilities over the past five years



93%

Hallam students in work or further study within six months of graduating\*\*



120

Countries we welcome students from



19,000

Student placements offered every year

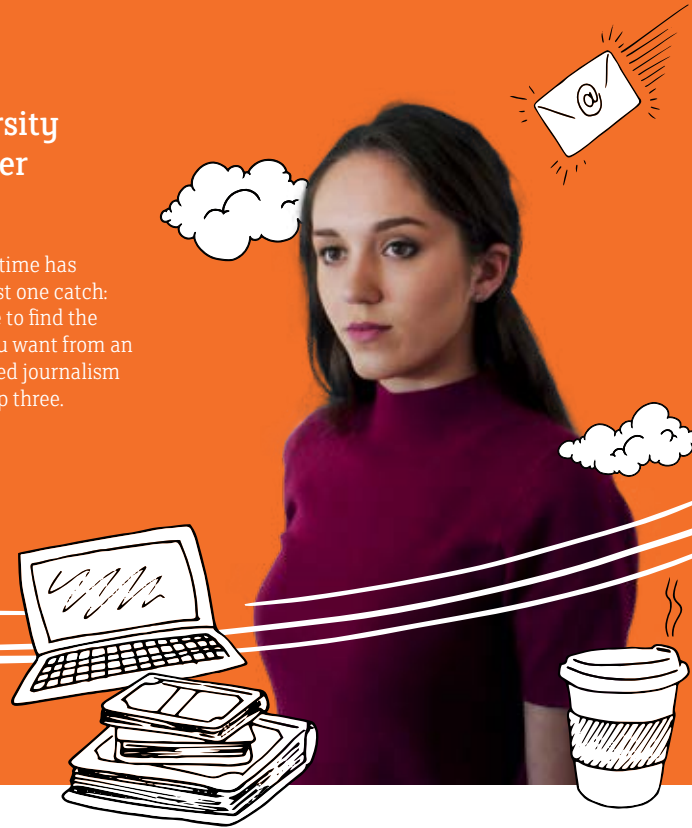
\* Research Excellence Framework (REF) 2014. \*\* (DLHE, 2013-14)

# Why study at Sheffield Hallam?

Words and photographs by Chloe Ranford

Journalism student from Queensland University of Technology, Australia. She spent a semester at Sheffield Hallam.

You've dreamt about studying journalism abroad for years, and now the time has come to choose the university you want to study at in the UK. There's just one catch: you need to sort through all the UK universities with a journalism degree to find the one that's right for you. It sounds like a lot, but don't stress! Whatever you want from an overseas university – whether it be an ease-of-travel location or accredited journalism experience – be sure to list Sheffield Hallam University as one of your top three.



## It's situated in a charming, student-friendly city

Sheffield Hallam University is based in Sheffield; a city in which one in every ten residents is a student. With such a large number of students, Sheffield has developed with them in mind – it's safe, green, cheap, independent and lively!

## It has a dedicated international experience team

Sheffield Hallam's International Experience Team rolls out the red carpet service before you even set foot in England. They offer a 24-hour turnover time for emails, advice on how to prepare for your semester abroad and they'll even help you with your visa application. When you arrive, you can participate in a three-day orientation programme.

## A vibrant student-friendly nightlife

To cater to such a large student population, Sheffield has established a diverse and student-safe nightlife. Pubs, clubs, restaurants and cinemas offer discounts to anyone with a student card and student nights are held during the week, to avoid the weekend rush.

## It prepares you for your career

All of Sheffield Hallam's courses are designed to maximise your job prospects. Their BA (Hons) Journalism degree helped me get industry-ready with practical experience, such as creating a live online newspaper. I also had the option to undertake work experience at a media organisation for credit points – a great way to spice up your resume while overseas!

## It features most forms of national and international travel

Sheffield boasts several major railway routes via Sheffield Railway Station – perfect for those fleeting weekend getaways. To top it off, Sheffield also neighbours Leeds Bradford Airport, which flies to over 75 European destinations. Talk about it being too easy to travel abroad!

## It's a world renowned university

Sheffield Hallam University has a great reputation internationally, thanks to its success as one of Britain's most progressive and innovative universities. Studying at a university with such a solid international reputation looks great on paper, and can even open the door to enriching connections, internships or jobs in the future!



Blue Lagoon, Iceland



Stonehenge, UK



Pisa, Italy



Venice, Italy



Dingle Beach, Ireland



Jungfrau Aegghorn, Switzerland



Paris, France

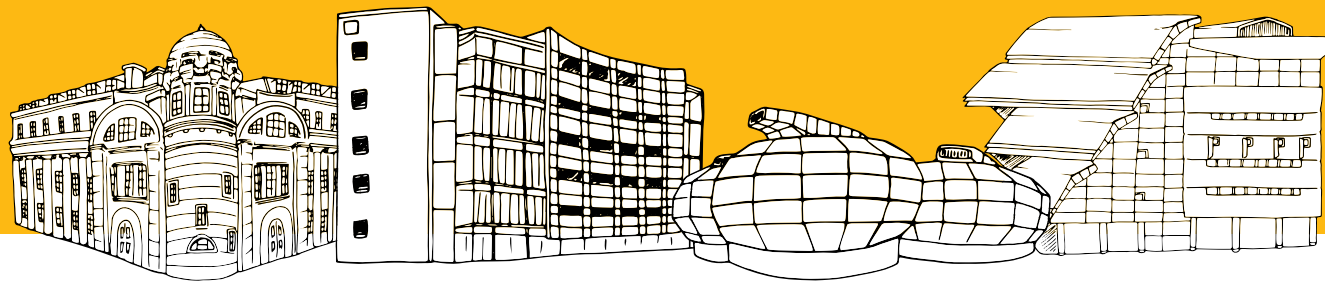


Isle Of Skye, UK



Florence, Italy

# Find out why we're one of the UK's most popular universities



## Research that changes lives

We are one of the leading modern universities in the UK for research. We have 16 research centres and institutes, with a reputation for world-class research.

## Our International Experience Team

We have a dedicated team who can support you from now to when you arrive in Sheffield. We can help you with your visa application and offer a free pick-up service from Manchester Airport.

## Sheffield Hallam Students' Union

The vibrant hub of student life with a bar, café, shop and advice centre and the contact point for more than 60 student-run societies and clubs.

## Adsetts Library

One of our two libraries which are open 24 hours a day, 365 days a year so you can study at the time which suits you. You can book one of 2,000 study spaces and 1,000 computers.



"I began to see the world through the eyes of the numerous friends that I met there because in one year I made friends from so many countries, continents, and cultures."

**Nathan, business student from France**



"I come from a small town in Northern Arizona and, while Sheffield is nearly 10 times the size, I find it has the same comforts of small town living with the added benefits of being a modern city."

**Zoe, biosciences student from the USA**



"The fact that my course was accredited by the Chartered Institute of Public Relations shows the high quality of teaching. I know this will make me a strong competitor in the job market."

**Emma, public relations and media student from Sweden**



"I enjoyed the way the University never made me feel like I'm just a number. They were always ready to help as well as provide facilities to students, such as loan schemes for cameras and laptops."

**Gabriella, tourism student from Malta**



"There are always opportunities for discussion in class which has given me the knowledge, skills and confidence I need to be a teacher."

**Melissa, teacher education student from Italy**



# Supporting your career ambitions

Our teaching and research staff are industry and academic experts. They bring an in-depth understanding of their industry or sector to their teaching.

## Our network is your network

You benefit from our network of 3,500 businesses including Adidas, Disney, Sony, SAP and the BBC. We regularly invite employers to come to careers fairs on campus so you can talk to them direct about career opportunities.

## Highest rated careers service in the UK

We have a dedicated team of careers advisers at our Careers and Employability Centre. We received a 95% student satisfaction rating for careers support\*.

## Professionally accredited courses

Most of our courses are accredited by professional bodies so we know you're developing the skills in demand in your sector.

## Learn from the experts

Our teaching and research staff are industry and academic experts. They bring an in-depth understanding of their industry or sector to their teaching.

## Putting your knowledge into practice

Whatever you study, you'll have the opportunity to practise applying your knowledge to real projects. Many of our students complete placements, internships or consultancy projects alongside their studies.

## Postgraduate Scholarships

You may be eligible for this scholarship if you have studied as a study abroad student at Sheffield Hallam for a semester or a year and are enrolling onto a postgraduate taught course. Please see our exchange and study abroad webpages for details.



"We offer many opportunities which make you stand out to future employers. Whether you complete a work placement, learn a new language or become a student representative for your course."

**Dr Rondy de Silva**  
Senior lecturer in international business



"All of our biosciences courses focus on the application of your learning. We give you the opportunity to share your ideas in a supportive environment."

**Dr David Smith**  
Senior lecturer in biochemistry

# Find out more

If you'd like to study in Sheffield as part of an exchange or study abroad programme, here's your step-by-step guide:

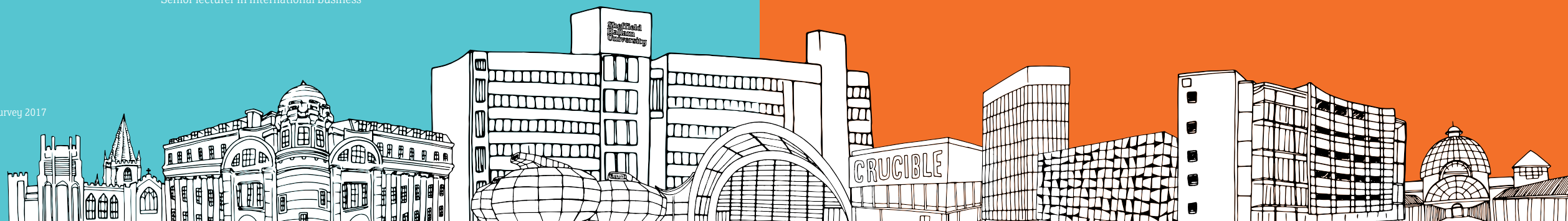
- 1** Visit our website to find out what modules and routes are available. Exchange students can visit [www.shu.ac.uk/exchanges](http://www.shu.ac.uk/exchanges) and study abroad students visit [www.shu.ac.uk/studyabroad](http://www.shu.ac.uk/studyabroad)
- 2** Check that you meet the entry requirements
- 3** Speak to your university's exchange coordinator or study abroad advisor and get their approval for your application
- 4** Find out whether you'll need a student visa, and if so, apply as early as possible
- 5** Submit your application to study with us, in plenty of time
  - 30 November for the January intake
  - 31 July for the September intake
- 6** Apply for your accommodation before 1 August or 1 December to be guaranteed a place at Liberty Hall

Remember, we are on hand to answer your questions and provide support throughout the application process. You can contact us at [admissions@shu.ac.uk](mailto:admissions@shu.ac.uk)

For further information on:

- how to apply
- what you can study
- visa support

Visit [www.shu.ac.uk/exchanges](http://www.shu.ac.uk/exchanges) for exchanges and [www.shu.ac.uk/studyabroad](http://www.shu.ac.uk/studyabroad) for our study abroad programme





Co-funded by the  
Erasmus+ programme  
of the European Union

If you're studying at an institution in Europe, you may be able to apply for an Erasmus+ grant\*, co-funded by the European Union, which contributes to the extra costs of living overseas. Contact your institution's Erasmus co-ordinator for more information about Erasmus+ funding.

\*subject to the UK's continued participation in the programme

## Connect with us

Check out #WeAreHallam on Facebook, Instagram and Twitter to find out more about why Sheffield is such a great student city.

