



COLLEGE
CONTACT.COM

College Contact GmbH
Hanauer Landstraße 151-153, 60314 Frankfurt am Main
Telefon: 069 - 907 2007 30
E-Mail: beratung@college-contact.com
Web: <https://www.college-contact.com>

SWIN
BUR
NE

SWINBURNE
UNIVERSITY OF
TECHNOLOGY

AUSTRALIA

STUDY ABROAD AND EXCHANGE

Your adventure starts at Swinburne

swinburne.edu.au/studyabroad

WELCOME TO SWINBURNE

Ready to make Australia your home and study in Melbourne for one or two semesters?

You'll get to live as the locals do, expand your horizons, make treasured life-long memories, explore the unknown and grow comfortable with it – all while continuing your academic progress.

Swinburne is where your adventure begins.



“

I chose Swinburne for two reasons: it's in Melbourne and it has a high level of academia.

When I arrived and started living my life as a Swinburne student it wasn't just the academia or the city that excited me, it was the great environment, my teachers, my new friends and all the experiences lived on and off campus.

HECTOR LOZANO
MEXICO

Swinburne's prestigious world academic ranking lists reflects our commitment to high-quality teaching and research and graduate outcomes.

We have an international reputation for quality research that connects science and technology with business and the community – this is why Swinburne attracts highly qualified academics and educational leaders.

You'll learn from academic staff who not only have industry experience, but who also bring that experience to life through their teaching.

**TOP
3%
GLOBALLY**

Academic Ranking of
World Universities 2020

**TOP
50
UNDER 50**

QS World University
Rankings 2020

**TOP
72
IN ASIA PACIFIC**

Times Higher Education
University Rankings 2019

**LEADERS
IN DESIGN**

**TOP
50
FOR
ART AND DESIGN**

QS World Rankings of
University by Subject 2020

**ENGINEERING
EXCELLENCE**

**TOP
100
CIVIL ENGINEERING
AND AUTOMATION
AND CONTROL**

Academic Ranking of
World Universities by Subject 2020

**SUCCEEDING
IN BUSINESS**

**WE ARE
AACSB
ACCREDITED**

**ONLY 5% OF THE
WORLD'S BUSINESS
SCHOOLS SHARE
THIS HONOUR**

(Association to Advance
Collegiate Schools of Business)

SWINBURNE'S HOME IS THE HOME OF...

... oh, so much. Melbourne is the culture capital of Australia. From the arts, food and live music to sport and fashion, there'll always be something new for you to experience in Melbourne.

There's a reason we topped the world's most liveable city index for seven years running.*

*Global Liveability Index, 2019. The Economist Intelligence Unit.



EXPERIENCE MELBOURNE

Welcome to Australia's top student city.

Melbourne's amazing lifestyle combines culture and outdoor living, where laneway coffee ignites creativity and inspires new perspectives.

Explore our beaches, national parks and beautiful bushwalks, and experience our culture at our markets, live music venues, festivals and sport events. You'll always have something new to try.

YOUR GATEWAY TO AUSTRALIA



YOUR AUSSIE BUCKET LIST

Want to see everything Australia has to offer? You can start your **#swinburneaventure** with these events organised during orientation:

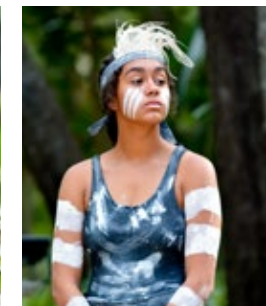
- ✓ Race Around Melbourne – It's the Amazing Race, Swinburne style
- ✓ See Australia's native wildlife on a day trip
- ✓ Tour Melbourne's street art and other hidden secrets
- ✓ Make friends from all over the world

Swinburne also organises:

- ✓ A surf adventure along the Great Ocean Road
- ✓ An Aussie Rules kick around followed by an AFL game

There's plenty more you can do:

- Discover Indigenous culture and even throw a boomerang
- Photograph the iconic Brighton Bathing Boxes
- Sip a famous Melbourne coffee at one of Fitzroy's hipster cafés
- Kayak or ride a bike along the Yarra River
- Take on the 1000 Steps in the Dandenong Ranges
- See fairy penguins at Phillip Island or St Kilda
- Go back in time to the gold rush at Sovereign Hill
- Taste wines throughout the Yarra Valley
- Relax at the Peninsula Hot Springs
- Go tree surfing on the Mornington Peninsula
- Explore Wilson's Promontory
- Investigate the heritage State Library of Victoria
- Ride the world's oldest continually operating roller coaster at Luna Park
- Bite into a hot jam doughnut at the Night Market
- Have a cocktail at one of many rooftop bars
- Head to New Zealand on your mid-semester break



LIVING IN MELBOURNE

We'll look after you

Swinburne Abroad advisers will be your first point of contact when you arrive at Swinburne. They provide advice and support to help you adjust to life and study in Australia.

On your arrival at Swinburne, you'll have the opportunity to attend a welcome session where you'll be taken on a tour of the campus, given information about your studies and living in Melbourne, and have the opportunity to meet other students.

Orientation will take place the week before your studies commence and it will give you all the information you need to have a successful study abroad experience at Swinburne, but if in the meantime you have any questions, you can email us directly at studyabroad@swin.edu.au



Melbourne has warm summers, sunny springs, crispy leaved autumns and cool winters. There's something for everyone with snow in the mountains and sun at the beaches.



Sporting capital of the world

#1

student city in Australia
QS Best Student Cities Ranking 2019

#2

most liveable city in the world
Global Liveability Index, 2019
The Economist Intelligence Unit.



“

I love it here. Living in Melbourne is super convenient with amazing food all around. Having the train so close to campus makes it easy to get myself around pretty quickly and explore.

CARA
UNITED STATES

Finding a home

You have loads of accommodation options in Melbourne - whether you want to live on campus, rent privately, or stay with a local family. For advice about accommodation, including how to make applications, managing communications with your landlord and what to look for in a rental property, contact our housing advisers at accommodation@swin.edu.au

	PRIVATE RENTAL ACCOMMODATION	SHARE ACCOMMODATION	HOMESTAY	ON-CAMPUS ACCOMMODATION
Description	Renting your own unfurnished apartment or house	Sharing a rental house or apartment with other students	Living in a furnished bedroom as a guest in a local family's home	Living in a single furnished room in an apartment or college, usually sharing the apartment with other students
Cost per week	Hawthorn and inner-city suburbs: • A\$240–A\$400 (1 bedroom) • A\$400–A\$550 (2 bedroom) plus bills (A\$20–A\$30) Outer suburbs: • A\$200–A\$370 (1 bedroom) • A\$300–A\$420 (2 bedroom)	Hawthorn and inner-city suburbs: • A\$180–A\$350 plus bills Outer suburbs: • A\$140–A\$200 plus bills	Approximately A\$325, including two to three meals per day and bills (except telephone and internet)	Swinburne Residential College: • A\$325 Swinburne Place Apartments: • A\$272–A\$384
Contract	Minimum 12 months	Varies	Minimum four weeks	Varies
Advantages	• Independent • Can choose what you want	• Cheaper than other options • Independent • Meet new friends	• Learn about the Australian lifestyle • Family-orientated environment	• Close to university facilities • Meet friends • Shops, restaurants and public transport nearby
Disadvantages	• Must buy furniture • May have to find share mate • Very difficult to break lease	• Living with people who you don't know and may have a different lifestyle from you	• Limited privacy • Have to fit in with the family's lifestyle	• More expensive than other options
Procedure	1. Locate property. 2. Inspect property. 3. Lodge application. 4. Sign the lease contract. 5. Connect utilities. 6. Move in.	1. Locate property. 2. Inspect property. 3. Sign the lease contract. 4. Move in.	1. Apply directly to the provider. 2. Receive an offer. 3. Move in.	1. Apply online. 2. Receive an offer. 3. Move in.



IN THE HEART OF MELBOURNE

Our Hawthorn campus is conveniently located 10 minutes from the city centre in one of Melbourne's most vibrant inner-city suburbs.

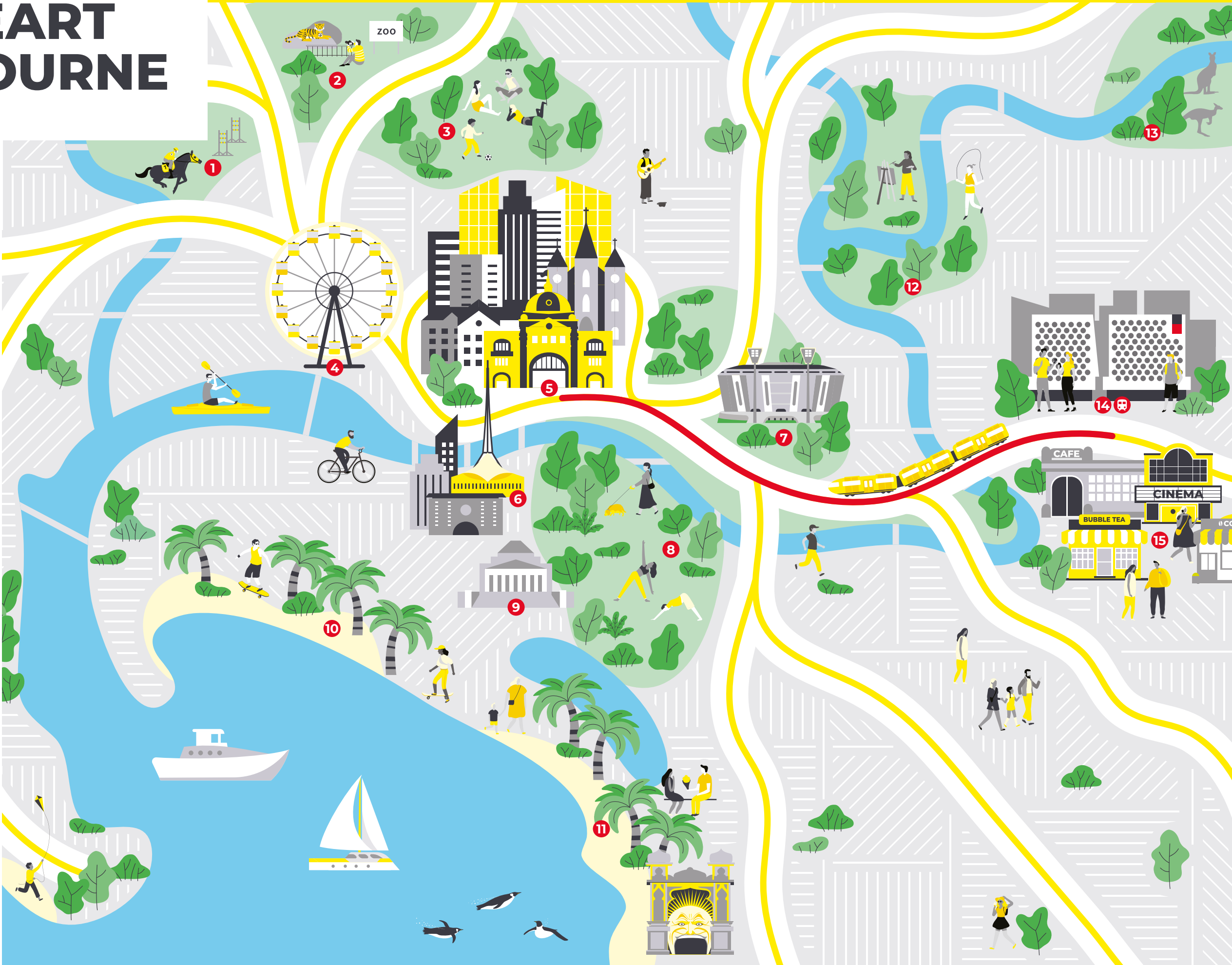
Our campus is directly behind Glenferrie Road, where you'll find a diverse choice of restaurants and cafés, plus dozens of shops and boutiques. Two supermarkets and a number of international grocers mean you'll never have to go far for the essentials.

If you are looking to take a break from the books, you'll be spoilt for choice. You can watch a movie at Lido Cinemas located just across the road (they have a sweet rooftop bar too!) or go for a swim in the Hawthorn Aquatic and Leisure Centre (free for students!).

And if immersing yourself in Mother Nature is more your thing, just head around the corner to Central Gardens.

KEY

- 1 Flemington Racecourse
- 2 Melbourne Zoo
- 3 Royal Park
- 4 Melbourne Ferris wheel
- 5 City centre
- 6 Arts precinct
- 7 Melbourne Cricket Ground
- 8 Royal Botanical Gardens
- 9 Shrine of Remembrance
- 10 Port Melbourne Beach
- 11 St Kilda Beach
- 12 Yarra Bend Park
- 13 Yarra Flats Park
- 14 Swinburne campus
- 15 Hawthorn precinct
- Glenferrie station (10 mins to city centre)
- City-Swinburne metro line
- Other metro lines



YOUR STUDY OPTIONS

At Swinburne, we're about empowering you to make the most of your study abroad experience.

Yes, we want you to study and learn, but we also want you to explore everything Melbourne and Australia have to offer. You may only get a few chances in life to fully immerse yourself in a new culture, meet unique wildlife, and form international friendships with people from the other side of the world. We're here to help you make these things happen.

You can study for one or two semesters, and also add a Summer or Winter Term program that will fast track your degree. You'll also have the flexibility to choose subjects from any of our study areas (see page 15).

And, when your time at Swinburne is up, it'll be sad to see you go, but you'll get an academic transcript you can take to your home institution for credit transfer.

OPTION 1:
Student exchange

You qualify as an Exchange student if:

- you are enrolled at one of our exchange partner universities, and
- you are nominated by your home university

You will continue to pay your home university fees and will not pay fees to Swinburne.

A list of our partner universities can be found here: swinburne.edu.au/current-students/study-abroad-exchange/studying-a-semester-abroad/partner-universities

OPTION 2:
Study abroad

You will be considered a Study Abroad student if:

- Your home institution is not one of our exchange partner universities, or
- your home university is one of our exchange partners but you have not secured an exchange place, or
- you are a recent high school graduate and are thinking of taking a gap year (or semester) between high school and university.

Study Abroad students pay tuition fees to Swinburne.



Do you meet our entry requirements?

Our Academic and Language entry requirements are listed on the back of this brochure.

If you come from a non-English speaking background, you can choose to complete a preparatory English language course at Swinburne before your study abroad semester!

Key dates

You can choose to study at Swinburne for one or two semesters, beginning in either Semester 1 or Semester 2.

If you choose to start in Semester 1 (February-June), you'll get here in the last month of summer (so, bring shorts... and a coat for the upcoming winter!), and if you arrive for Semester 2 (July-November), winter will be in full swing before we head into spring (so, bring a coat... and shorts!).

	SEMESTER 1 (Northern Hemisphere Spring)	SEMESTER 2 (Northern Hemisphere Autumn/Fall)
Key dates		
Orientation week (compulsory)	February – March	July – August
Teaching period	March – June	July – November
Mid-semester break (1 week)	April	September
Exams	June	November
Application deadlines		
Study Abroad	Late January	Late June
Exchange	1 April	1 October

Study Abroad Certificate of Specialisation

Want to specialise in an academic area as part of your adventure? Study Abroad students can receive a Study Abroad Certificate of Specialisation on top of your regular transcript.

To do this, you'll need to choose to study at least two subjects (units) from the same discipline (e.g. two business administration subjects). And, if one just isn't enough, you can get a dual specialisation, which means completing two subjects from two disciplines. To apply, you just need to select the Study Abroad Certificate of Specialisation option when completing your Study Abroad application.

Summer/Winter Abroad

Want to speed up your degree? Swinburne Study Abroad students can enrol in a Summer or Winter term. These terms are taught in intensive mode for six weeks, allowing you to accelerate your degree during a semester break. There are a variety of subjects available, and you can either come just for the term or add it right after your semester experience.

TAKING TIME OFF BETWEEN HIGH SCHOOL AND UNI?

Our Freshman Abroad/Gap Year program is for you!

Choosing from any first year study areas, you can be at Swinburne for one or two semesters. It's a great way to experience life beyond high school and discover your career path in a new country.



CHOOSING YOUR SUBJECTS

Now, here is the exciting part where you develop your study plan and choose your subjects.

Swinburne has a huge variety of study areas to choose from, and according to your interests, you'll be able to choose 3 or 4 subjects per semester.

Step 1. Download our subject lists

Whether you are a Study Abroad or Exchange student, you can choose Swinburne subjects from any area of study (see opposite page). Contact our Study Abroad team or visit swinburne.edu.au/studyabroad to download a full list of units available for Exchange and Study Abroad students.

Step 2. Check subject pre-requisites

When choosing your subjects/units, you need to be aware that some have specific pre-requisites or assumed knowledge.

You may meet the subject pre-requisites if you have taken an equivalent subject in the past, in your home university. This will be assessed at the time of application, and if any units are not suitable, our Academics will recommend alternatives.

You can check pre-requisites of all Swinburne units in our Unit Search: swinburne.edu.au/study/options/find/units or by clicking in the unit code of each unit in our subject lists.

TIP: Even though you may be planning to take 3 or 4 units per semester, we recommend that you list at least 6 units in order of preference, just in case one of them is not available or not suitable.

Step 3. Get approval from your home university

Once you have selected your preferred subjects, you should talk to a course adviser at your home university to make sure the classes you're planning to take will give you credit towards your degree.

Credit transfer

At Swinburne, the full study load per semester is between 3 and 4 subjects. This means that you will get between 37.5 and 50 Swinburne credits points.

At the end of your program, we will send your Swinburne academic transcript to your home university for credit transfer processing, and your home university will determine how credit will be transferred.

IF YOU'RE FROM EUROPE

SWINBURNE SUBJECTS	SWINBURNE CREDITS	EUROPEAN SYSTEM ECTS
3	37.5 credits	22.5 ECTS
4	50 credits	30 ECTS

IF YOU'RE FROM THE U.S.

SWINBURNE SUBJECTS	SWINBURNE CREDITS	US CREDITS
3	37.5 credits	approx. 12 US credits
4	50 credits	approx. 15 US credits



You can choose your subjects from any of the below study areas.

ARTS AND HUMANITIES

- Chinese
- Cinema and Screen Studies
- Creative Writing and Literature
- Criminology
- Environmental Sustainability
- Global Studies
- History
- Indigenous Studies
- Italian
- Japanese
- Literature
- Philosophy
- Politics and International Relations
- Sociology

AVIATION

- Aviation Management
- Human Factors

BUILT ENVIRONMENT AND ARCHITECTURE

- Architecture
- Building Design
- Conservation and Land Management
- Interior Architecture
- Design
- Urban Design

BUSINESS

- Accounting
- Business Administration
- Business Analysis
- Business Information Systems
- Corporate Governance
- Data Analytics
- Data Management
- Economics
- Entrepreneurship and Innovation
- Finance
- Financial Planning
- Human Resource Management
- Information Management
- International Business
- Logistics and Supply Chain Management
- Management
- Marketing
- Project Management
- Public Relations
- Social Impact and Philanthropy
- Sports Management
- Tourism

DESIGN

- Branded Environments
- Communication Design
- Design History and Theory
- Design Principles and Processes
- Industrial and Product Design
- Innovation and Design
- Motion Design
- Photomedia
- UX Design
- Visual Arts
- Visual Merchandising

EDUCATION

- Early Childhood and Primary Teaching
- Secondary Teaching

ENGINEERING

- Advanced Manufacturing Technology
- Architectural Engineering
- Biomedical Engineering
- Civil Engineering
- Construction Engineering
- Electrical and Electronic Engineering
- Mechanical Engineering
- Product Design Engineering
- Risk Management
- Robotics and Mechatronics Engineering
- Software Engineering
- Structural Engineering
- Telecommunications Engineering

FILM AND TELEVISION

- Film and Television Production
- Film and Television Theory
- Screen Production

GAMES AND ANIMATION

- Animation
- Digital Media Technologies
- Games and Interactivity
- Games Development

HEALTH

- Biomedical Science
- Clinical Technologies
- Digital Health and Informatics
- Exercise and Sport Science
- Health across the lifespan
- Health Communication
- Health Planning and Evaluation
- Health Promotion
- Health Statistics
- Neuroscience
- Nutrition
- Psychology and Forensic Science
- Psychology and Psychophysiology

INFORMATION TECHNOLOGY

- Computer Science
- Cybersecurity
- Data Analytics
- Data Management
- Data Science
- Digital Media Technologies
- Information Technology
- Information and Communication Technology
- Information Technology Project Management
- Internet of Things
- Network Systems
- Software Design
- Software Development
- Software Technology
- Systems Management
- Web Development

LAW

- Criminology and Criminal Justice
- Laws

MEDIA AND COMMUNICATION

- Advertising
- Digital Advertising Technology
- Digital Marketing
- Journalism
- Media Industries
- Media Studies
- Professional Writing and Editing
- Public Relations
- Social Media
- Sports Media

PSYCHOLOGY

- Clinical Psychology
- Psychology

SCIENCE

- Applied Mathematics
- Astronomy
- Biochemistry
- Biotechnology
- Chemistry
- Environmental Science
- Environmental Health
- Laboratory Technology
- Physics

Find out more about our courses at swinburne.edu.au/study

WE'RE AN ADOBE CREATIVE CAMPUS

Whether you are taking Design, Business or Engineering subjects, as a Swinburne student you get free access to over 20 Adobe Creative Cloud apps and free consultations with our Adobe Digital Coaches.

We're the first university in Australia to become an Adobe Creative Campus. Why? Because we want you to stand out in a sea of CV-sameness by being the most digitally savvy of them all.

Whether it's creating content, solving problems or knowing fact from fake, you'll know what to do, when to do it and how to do it.



HOW TO APPLY

Applying to Study Abroad at Swinburne is simple – just follow these steps.
If you have any questions or need assistance with your application along the way, email the Swinburne Abroad team at studyabroad@swin.edu.au

1. Check you are eligible to apply

Whether you are applying for Study Abroad or Exchange, you must have successfully completed one year of study at your home university.

However, if you have just graduated from high school, you may be eligible for our Freshman Abroad/Gap Year program. Admissions will be based on your high school results.

Note: If you are from an exchange partner university, you must be nominated by your home university and meet their program requirements.

2. Check you meet our English requirements

If you are from a non-English speaking background, you will need to provide evidence of English proficiency.

General prerequisites include one of:

- IELTS: 6.0 overall (no band score below 5.5)
- Internet-based TOEFL: 75 (no band score below 17).

Exceptions for certain European partners apply. Ask our Swinburne Abroad team for advice on your situation.

3. Develop your Swinburne study plan

It's time to choose your units, and even though you'll only take three or four units per semester, we recommend you list at least six units in order of preference, in case one of them is not available or suitable. You should talk to a course adviser at your home university to make sure the classes you're planning to take will count towards your degree.

Contact the Swinburne Abroad team or visit swinburne.edu.au/studyabroad for a full list of available units.

4. Prepare your application

For your application, you'll need:

- ☐ Your most recent official academic transcript, with grading system
- ☐ Proof of English language proficiency, if applicable
- ☐ Copy of your passport
- ☐ Portfolio (This is applicable for some Design and some Film and TV subjects only)


5. Apply online

To complete your application, visit student-swinburne.studylink.com


Swinburne will assess your application and if successful, you will receive a letter of offer. Then all you need to do is accept your offer, and before you know it you will be in the heart of culture-filled Melbourne!

Visit swinburne.edu.au/study/international/offer to find out how to accept your offer.


Get in touch


 +61 3 8676 7002

 studyabroad@swin.edu.au

 swinburne.edu.au/studyabroad

 Swinburne University of Technology

 @swinburne

 @swinburne

 Swinburne University of Technology

 Swinburne University of Technology

Swinburne Abroad
BA Building, Level 2, Atrium,
48-52 William St, Hawthorn,
Victoria 3122 Australia

The information contained in this brochure was correct at the time of publication, September 2020. The university reserves the right to alter or amend the material contained in this guide.

CRICOS 00111D RTO 3059 SUT0015_2009



PLEASE
RECYCLE