



**COLLEGE**  
**CONTACT.COM**

College Contact GmbH  
Hanauer Landstraße 151-153, 60314 Frankfurt am Main  
Telefon: 069 - 907 2007 30  
E-Mail: [beratung@college-contact.com](mailto:beratung@college-contact.com)  
Web: <https://www.college-contact.com>



BY STUDENTS  
FOR STUDENTS

**UNDERGRADUATE  
PROSPECTUS 2020**



**UNIVERSITY OF  
BIRMINGHAM**







# COME

# AND

Open days are the best way to find out more about a university. Visit Birmingham and explore our campus, city and accommodation, attend taster lectures to discover more about our courses and speak to our current students to find out what they like most about studying at Birmingham.

# EXPLORE

## OPEN DAYS

**Friday 28 June**

**Saturday 29 June**

**Saturday 14 September**

**Saturday 19 October**

**[www.birmingham.ac.uk/opendays](http://www.birmingham.ac.uk/opendays)**

# WELCOME

As you make this exciting decision about your future it is our students who live and breathe the experience of university life at Birmingham, and they are the best people to tell you about what it is like to live and learn on our campus and in our city.

By choosing Birmingham, you will join a vibrant, diverse and global community, benefit from world-class facilities and be a part of our innovative and challenging environment in which we make important things happen. Education at Birmingham

is a genuine partnership and this is reflected in our focus on ensuring you develop the skills needed to stand out in a competitive job market, whichever career you go on to choose.

Discover what studying at Birmingham means to our students, and what it could mean for you. You have the opportunity to create your own story here. Come and explore what Birmingham has to offer on one of our open days and experience the University and city for yourself. We look



forward to welcoming you to our campus and playing our part in your future success.

**Professor Sir David Eastwood**  
*Vice-Chancellor,  
University of Birmingham*

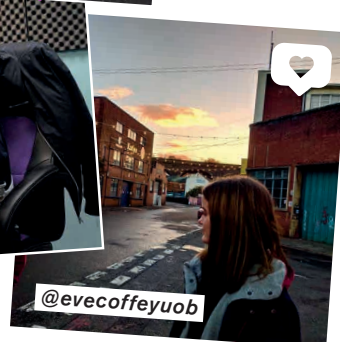
## OUR STUDENTS

The best people to tell you about what it's like to live and learn in Birmingham are our students!

You'll hear from them throughout our prospectus, but they're here to share their tips about studying and student life, and answer any questions you might have as well.

**FIND OUT MORE:**

**[WWW.BIRMINGHAM.AC.UK/OUR-STUDENTS](http://WWW.BIRMINGHAM.AC.UK/OUR-STUDENTS)**



**CHECK OUT OUR BLOGS  
AND SOCIAL MEDIA FOR  
MORE ABOUT LIVING IN  
BIRMINGHAM:  
[LIFE.BHAM.AC.UK/UG](http://LIFE.BHAM.AC.UK/UG)**





# CONTENTS

Come and explore	3
Welcome	4
Why Birmingham?	6
Learning at Birmingham	8
Shape your future here	10
Your city	12
Your campus	16
Accommodation at Birmingham	22
A place to call home	26
Supporting you at Birmingham	28
Welcoming students from all backgrounds	30
Sport for all	32
Study Abroad with Birmingham	36
Make an impact	38
What else can I do with...?	40
Course directory	42
How to apply	58
Entry requirements	60
Costs and financial support	62
Cost of living	64
The Birmingham Offer Calculator	66



@unibirmingham



/unibirmingham



@unibirmingham



# WHY

# BIRMINGHAM?

When you choose Birmingham, you are choosing to study at an outstanding university, renowned for changing lives and transforming society.

## GLOBAL

BIRMINGHAM IS RANKED 79TH  
IN THE WORLD (QS WORLD UNIVERSITY  
RANKINGS 2019)

## 14<sup>TH</sup>

IN THE TIMES AND THE SUNDAY TIMES  
GOOD UNIVERSITY GUIDE 2019

## 2<sup>ND</sup>

BIRMINGHAM IS THE SECOND MOST  
TARGETED UNIVERSITY BY TOP  
EMPLOYERS IN 2017–18 (THE GRADUATE  
MARKET IN 2018 [WWW.HIGHFLIERS.CO.UK](http://WWW.HIGHFLIERS.CO.UK))

## 15<sup>TH</sup>

IN THE COMPLETE UNIVERSITY  
GUIDE 2019

## 48%

OF BIRMINGHAM'S STUDENTS  
CHOOSE TO STAY TO WORK IN  
THE REGION AFTER GRADUATING

## 19<sup>TH</sup>

IN THE GUARDIAN UNIVERSITY  
GUIDE 2019



## TEACHING QUALITY

THE UNIVERSITY OF BIRMINGHAM WAS AWARDED A GOLD RATING IN THE 2016–17 TEACHING EXCELLENCE FRAMEWORK (TEF)

## NOBEL PRIZES

THE UNIVERSITY HAS 11 NOBEL PRIZE WINNERS AMONG ITS STAFF, STUDENTS AND ALUMNI

## CAMPUS

OUR EDGBASTON CAMPUS IS REGULARLY CONSIDERED AS ONE OF THE TOP TEN MOST BEAUTIFUL CAMPUSES IN BRITAIN  
(THE TELEGRAPH)

## CITY

BASED IN THE HEART OF ENGLAND, BIRMINGHAM HAS THE BEST OF BOTH WORLDS; AN EXCITING CITY NEXT DOOR TO THE BEAUTIFUL ENGLISH COUNTRYSIDE

## HOME AWAY FROM HOME

ALL FIRST-YEAR UNDERGRADUATE STUDENTS ARE ELIGIBLE FOR ACCOMMODATION UNDER OUR FRESHERS GUARANTEE SCHEME\*

\*SEE PAGE 27 FOR DETAILS

## SPORT

FROM ABSOLUTE BEGINNERS TO WORLD-CLASS ATHLETES, THERE'S SOMETHING FOR EVERYONE. WITH THE UNIVERSITY PLAYING A KEY ROLE IN THE 2022 BIRMINGHAM COMMONWEALTH GAMES, THERE ARE EVEN MORE OPPORTUNITIES TO GET INVOLVED

# LEARNING AT BIRMINGHAM

In an ever-changing world, you will need to develop all-round skills for a modern workplace. A degree from Birmingham will prepare you for the rest of your life, and the opportunities here are almost limitless.

## FACT:

OUR TEACHING EXCELLENCE WAS RECOGNISED WITH A GOLD RATING IN THE 2016–17 TEACHING EXCELLENCE FRAMEWORK (TEF).

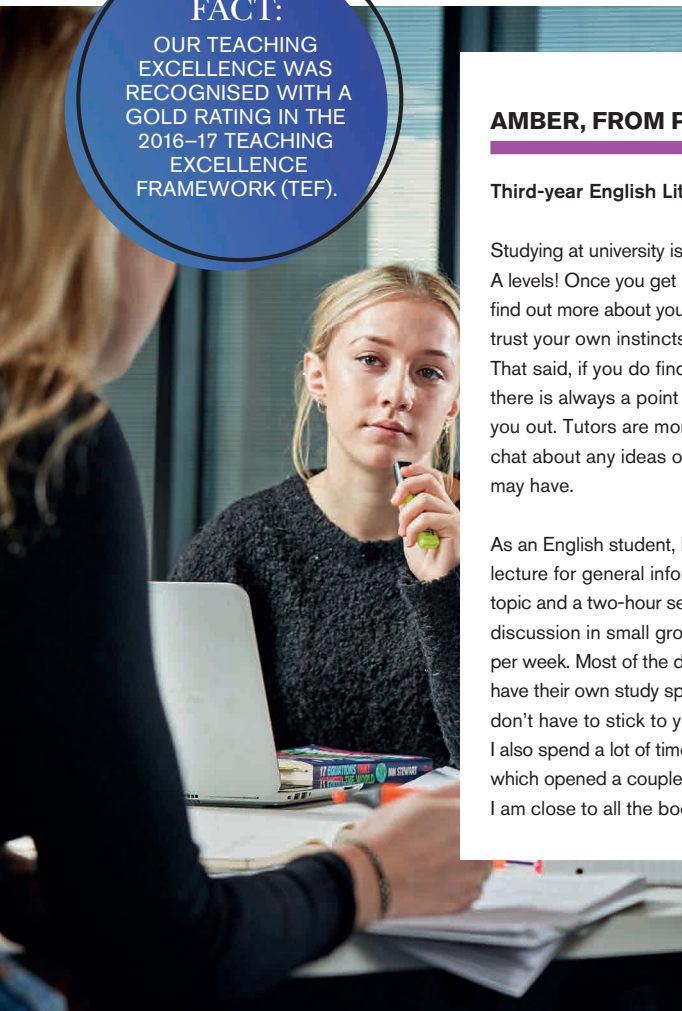
## AMBER, FROM PERSHORE

### Third-year English Literature

Studying at university is very different to A levels! Once you get used to it you really find out more about yourself and learn to trust your own instincts, which is fantastic. That said, if you do find yourself confused there is always a point of contact to help you out. Tutors are more than happy to chat about any ideas or concerns you may have.

As an English student, I have a one-hour lecture for general information on the topic and a two-hour seminar, for in-depth discussion in small groups – per module, per week. Most of the department buildings have their own study spaces, although you don't have to stick to your department. I also spend a lot of time in the main library, which opened a couple of years ago and I am close to all the books that I need!

Last summer, I completed the College of Arts and Law Summer Research Scholarship. Academics within my College advertise for a student to help them with their research. For five weeks I worked under Dr Emily Wingfield, aiding her development of her final-year module 'Cover to Cover Histories of the Book' (a module I am taking). It was a hands-on project involving archival work in the University's Special Collections. It was such a good experience to be trusted with independent research and allowed me to form working relationships with academics in the department. The projects available change every year but it is a fantastic and rare opportunity to carry out a sustained research project as an undergraduate.







“MY LECTURERS ARE  
MOTIVATIONAL AND  
INSPIRING WITH A CLEAR  
PASSION FOR THEIR  
TAUGHT SUBJECTS.”

*Beth, third-year Geography with a  
Year Abroad, from the Isle of Wight*

### **SARAH, FROM LONDON**

#### **Fourth-year Psychology and Psychological Practice**

Studying at Birmingham has been a wonderful experience because, without exaggeration, every lecturer I have been taught by has been a key researcher in their field. The content we learn is grounded in research findings which are up-to-date and relevant.

In the third year of most degrees you do a research project. My research project tutor during my third year was incredibly supportive throughout the process of me designing and running my own experiment. He also talked to me about his own research and career choices, helping me to develop an understanding of Clinical Psychology as a career and the next steps I must take after graduation.

In 2016, I also participated in something called the Birmingham Project. It was a fantastic opportunity to work with students from different disciplines across the University and develop transferable ‘soft’ skills, essential for any career. We were tasked with developing a piece of software to tackle the question ‘how can we work to achieve economic justice in Birmingham?’ As a team, we decided to design an app that could improve access to university in socially challenged parts of the city. We performed market research, data collection, app design and finally presented our finished product to a panel of representatives from KPMG. We received mentoring from academics throughout the process – overall it was a great experience, which I would highly recommend to any first year.



### **HARVEY, FROM BRIDGEND**

#### **Second-year Modern Languages**

I have around 18 contact hours a week. Most of these are seminars – small groups of up to 15 students, discussing a topic in-depth; and for me it’s often also taught in a language like French or German! We also have lectures to give us a broad introduction to the same topics, and these are much larger with all students on the module attending, but still sometimes involve interactive discussions with the lecturer and using technology to get us thinking.



**FIND OUT MORE ABOUT TEACHING AND LEARNING AT BIRMINGHAM:**  
**[WWW.BIRMINGHAM.AC.UK/TEACHING](http://WWW.BIRMINGHAM.AC.UK/TEACHING)**

# SHAPE YOUR FUTURE HERE

At Birmingham, we work with you to help prepare you for a competitive graduate job market and provide you with opportunities to build your experience and develop your profile. University is just the start of your exciting future, whatever career you choose.



## OUR CAREERS NETWORK

Opportunities are available for all of our students, and our expert staff are here to help you develop your skills. Through our Careers Network you can attend workshops, and book one-to-one support sessions for help with CVs and job applications. We know that employers look for applicants with more than just a degree and we can also help you source global internships and work placements which will set you apart from the competition. We work with a range of professional partners and employers and our students have undertaken internships with many global organisations including GlaxoSmithKline, HSBC and Cancer Research UK.



**MOLLY, FROM LEICESTER**

### Third-year English Literature

I took part in the B-Enterprising boot camp over three days last November. I found this really useful in developing my confidence in pitching, idea development and public speaking. I actually went on to place third out of 20 teams, which was really rewarding. It has given me a lot to think about for the future and encouraged me that I could one day be an entrepreneur.



**ELIZABETH, FROM SOUTHAMPTON**

### Fourth-year History and Russian Studies

I have been utilising the Careers Network since my first year and they are excellent. They provide an abundance of workshops and events for students of all disciplines. You have your own designated careers supervisor for your School and you can book one-to-one appointments for help with CVs and applications or simply pop along to a 30-minute session on help with getting employment or in my case, a graduate scheme. I am on track to receive the advanced PSA (Personal Skills Award), which I have been working towards since my first year of university. It means I can put that something extra on my CV!



‘THE CAREERS NETWORK ALWAYS RUN REALLY USEFUL WORKSHOPS LIKE CV BUILDING AND MOCK INTERVIEWS TO HELP YOU BECOME A MORE EMPLOYABLE GRADUATE WHEN YOU LEAVE BIRMINGHAM.’

*Sophie, second-year American and Canadian Studies, from Dudley*



### VERITY, FROM BRIGHTON

#### Second-year Liberal Arts and Natural Sciences

As a Liberal Arts and Sciences student I am studying a range of disciplines and am interested in many different career routes. Careers Network offers excellent support to students at all stages of their programme and offers constructive help no matter what stage you are at with your career plans.

I am registered for the Personal Skills Award, which is a great opportunity for students to record the opportunities they get involved in throughout their time at university. The PSA has helped me to recognise what skills I have developed through activities that I have been involved with, such as being on a

committee of a sports club and working part-time. It encourages students to get immersed in the wealth of opportunities available at university, and to see how these will help you develop transferable skills for life after graduation. I have also registered for the upcoming B-Enterprising boot camp and am really looking forward to taking part!



### ALUMNI

### ELLEN, FROM BUCKINGHAMSHIRE

#### Geography alumni, graduated in 2017

Although I was aware of Careers Network when I was a student, I didn't use them as much as I could have done. My advice to you is to make the most of what's available! However, as a graduate I could still access their support, which is how I found out about the University's Graduate Training Scheme. I made the best use of the Careers Network resources when preparing for my application and interview, which helped me in getting my place on the programme, one of only four that year.

**FIND OUT MORE ABOUT THE CAREERS SERVICES AVAILABLE TO YOU AT BIRMINGHAM: [WWW.BIRMINGHAM.AC.UK/YOURFUTURE](http://WWW.BIRMINGHAM.AC.UK/YOURFUTURE)**

# YOUR CITY

In Birmingham, our community is diverse and friendly, our people are genuine and as one of the original pioneering cities, Birmingham has developed into a melting pot for shopping, food and drink, nightlife, sport, culture and industry.

**STUDENT SAYS:**  
'THERE ARE LOADS OF  
REALLY UNIQUE VENUES  
LIKE GHETTO GOLF,  
DIGBETH DINING  
CLUB AND EVERYMAN  
CINEMA.'

THE CUSTARD  
FACTORY

## THIVYA, FROM LONDON

### Third-year International Relations

What I love most about Birmingham is that there is always something going on in the city. There is always something to do or see or things to do or places to eat at. My favourite time of year is when the Christmas market is open. The city is also really diverse so it's not hard to find food from home when you are feeling a little homesick.

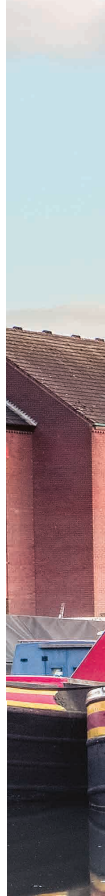
What surprised me was how many companies have offices here. The salary is fairly similar and house prices and travel are relatively affordable. Moreover, a lot of these companies come to the University to recruit students.

You can often find things to do or eat at a variety of different price points. London is really expensive and a bulk of your money would go towards travel and you are really intertwined with the city, whereas in Birmingham you are in a student village.



It is so much fun to live in Birmingham as a student – you have to explore the city! Check out the Thinktank, go to the top of the library to get a 360° view of the city, then go have lunch in Brindleyplace. After that take a peaceful stroll down the canal and end your day in Broad Street where you won't be short of a club/bar.

I think a lot of students don't leave the city centre. It's worth visiting Ladypool Road, where you will find the best South Asian restaurants and clothing. And since we are usually not in Birmingham in the summer, we often miss out on visiting parks in Birmingham. But students should definitely spend some time visiting the local parks and walking down the canal.





## GAS STREET



### STUDENT SAYS:

'IT IS SUCH A MELTING POT OF CULTURES AND NO TWO DAYS WILL BE THE SAME IN SUCH A BUSTLING CITY.'

## ELLIOT, FROM LONDON

### Third-year Civil and Railway Engineering

It's like London, but smaller (and cheaper!). Some students argue that cities like Leeds, Nottingham and Manchester have more culture, and better nightlife. Birmingham still has that, but it has a variety of opportunities too, and isn't student-dominated, which is nice.

The city's size means that it offers far more than most cities in the UK in terms of facilities, entertainment, and culture. The clubbing scene in Birmingham is ever growing, but there are also loads of quieter bars, pubs, and music venues in the city centre for when you don't really fancy going out to Broad Street. You have to visit the Mailbox or Brindleyplace. The walk from Five Ways along the canal into the city centre offers a level of serenity you wouldn't expect from a city of this size.

Not a lot of people know about the Ikon Gallery, a contemporary art venue near Brindleyplace. It's definitely the sort of thing you'll either love or

## GREAT WESTERN ARCADE

hate, but it's worth looking around regardless. The Birmingham Hippodrome also offers the chance to see anything from local theatrical treasures to West End classics on tour for reasonable prices.

How expensive Birmingham is, is a constant argument between my mates and I – Birmingham feels cheap if you're a southerner, but more expensive if you're from up north. My monthly expenses include everything from rent, to food, to society memberships and events, to social activities like bowling or the cinema, to the occasional Uber back from a night out...

I've already been offered a graduate job in an office in Birmingham, so I'll be staying in the area after I graduate!





“IT’S SO GOOD TO LIVE IN BIRMINGHAM. THERE IS EVERYTHING A STUDENT NEEDS FROM SHOPS TO A GREAT NIGHTLIFE.”

*Amber, third-year English, from Pershore*



## SAM, FROM BIRMINGHAM

### Second-year Biomedical Science

For me, the best thing about Birmingham is the transport links that are available. Multiple bus routes exist that go from across the campus to nearby student accommodation, the city centre and beyond. The rail access between University, the centre of Birmingham and the surrounding area makes commuting ideal for me – meaning that I can be in the city and meet friends or shop, within a matter of minutes.

I definitely would consider staying in Birmingham after I graduate; the transport access and the job opportunities in the biomedical and medical fields are both numerous and highly appealing. Birmingham is relatively good value for money – if you’re looking for a bargain or if you want to treat yourself, the variety of shops in the city can cater to most

budgets without ‘stretching the bank’. I spend my money on meeting friends, transport, clothes and music (especially vinyl). Of particular interest for me are the concerts that take place in Birmingham – I’ve recently purchased tickets to concerts by George Ezra, Jess Glynne and Sigrid, all being held in Birmingham.

I think the abundance of cafés is not something which is widely known. As part of the ‘café crawl’ organised by sober socials, I’ve had the chance to visit numerous coffee shops and tearooms which I probably would not have known about, had I not gone to that event. For students who don’t particularly like clubbing/drinking alcohol, the cafés offer a perfect alternative after you’ve finished lectures for the day or whether you’re meeting up with friends.

*i*

## COMMONWEALTH GAMES 2022

Birmingham has a friendly and internationally diverse community which makes our city the perfect location for global events. In 2022, Birmingham will host the Commonwealth Games, bringing people from around the world together in 11 days of sporting competition. Birmingham already has a number of excellent sports venues (including on campus where we will be hosting hockey and squash) and we’re thrilled to be part of the action.

Find out more  
[www.birmingham2022.com](http://www.birmingham2022.com)





STUDENT SAYS:  
'IT'S SO MUCH CHEAPER  
THAN LONDON.'



**MEGAN, FROM NOTTINGHAM**

Fourth-year English with a Year Abroad

I love how central Birmingham is. New Street station is only a ten-minute train journey away from the University. Since coming to Birmingham, I have visited cities such as London and Oxford for the first time because the station is so connected to the UK.

When I first moved to the city I was surprised by how pretty and unique the architecture is. Before coming to Birmingham, I had the impression it wasn't a nice city from my friends and family, but any negative opinion is false. Victoria Square is so historic and beautiful – it's hard not to love the city.

I would recommend exploring Grand Central and the Bullring to experience



the hustle and bustle of Birmingham – it can sometimes be really busy, which gives it a city feel. Also, make sure you explore Digbeth and its vintage stores or move in the opposite direction to go to Victoria Square and Birmingham Library.

I think most people don't realise how much theatre there is in the city. There are multiple theatres that produce a variety of productions. My favourite is The Rep, a small theatre near the library that often produces smaller plays that are equally as good as the bigger productions at the Birmingham Hippodrome. Equally, there are smaller venues that often host small but really good musicians.



It's such a diverse city with so much going on – I feel like I've barely explored it despite living here for three years.

**EXPLORE THE CITY: [WWW.BIRMINGHAM.AC.UK/CITY](http://WWW.BIRMINGHAM.AC.UK/CITY)**

# YOUR CAMPUS

**We are constantly evolving our campus to suit the lives of our students. With exceptional facilities, plenty of space and peaceful green grounds – visit us and we know you'll love it here.**

## EVE, FROM DERBY

### Second-year English

The best thing about Birmingham's campus is the beautiful old redbrick buildings. On a sunny autumn day they can be truly breath-taking. The campus was definitely one of my main reasons for choosing the University. It immediately made me feel secure but not overloaded, due to its vast scale. I have visited The Barber Institute of Fine Arts, and I have performed in the Lapworth Museum and The Bramall music building with my acapella group. All of these spaces are each a capsule of culture.

I have been involved in societies at Birmingham and am currently in the Acapella Society, which has been one of the most enriching experiences of my time here. Making friends outside of halls or my course is so refreshing, and I get to do what I love (singing) with an amazing group of people in lots of exciting venues.

The Guild of Students goes above and beyond just providing social outlets, and in recent weeks has been the frontman of student safety and welfare. The Guild really provides a voice for the masses. I have also been to ValeFest, a large student-run charity festival of music, performances and activities, and it was honestly so much more professional than I could have ever anticipated. There was something there for everyone. For me, the social life at uni is great.



**FACT:**  
THERE ARE OVER  
250 SOCIETIES  
AVAILABLE TO JOIN  
AT BIRMINGHAM.







**BIRMINGHAM'S CAMPUS  
WAS A KEY PART OF THE  
REASON I CHOSE TO  
STUDY HERE.**

*Sarah, fourth-year Psychology and  
Psychological Practice, from London*

**GREEN  
HEART**

## **SARAH, FROM LONDON**

**Fourth-year Psychology and Psychological Practice**



The best thing about Birmingham's campus is that it is constantly changing, with new facilities being added every year (eg, new library, sports centre, teaching facilities).

Birmingham's campus was a key part of the reason I chose to study here. I felt at home from my very first visit, and knew that I could picture myself being happy as a student here. I loved the beautiful Chancellor's Court (in particular, our iconic Old Joe clock tower) and the fact that there was a train station on campus – these unique features of our campus certainly drew me to Birmingham.

I have visited Winterbourne House and Gardens several times a year since I started studying at Birmingham. It is a fantastic green space just on our doorstep, and the fact that it is free for students makes it my go-to place for a walk. The Bramall music building is also a lovely venue with modern

facilities, located in the heart of campus. I have attended several events there with my friends – the most memorable of these visits being a comedy night with Zoe Lyons, which was highly entertaining and only £5 per ticket!

The Guild has organised a range of events during my time here, from socials (eg, Fresher's Ball) to societies' fairs and de-stress activities during exam season (such as free fitness classes). Overall, I think they do a good job of representing students and giving us a voice; for example, in 2018 the Guild President organised a 'Vice-Chancellor's Question Time', which gave students the opportunity to ask the Vice-Chancellor questions about his latest campus projects and University issues that affect us.



@\_carter.jpg



@sophie\_kxo

**i**

## **CAMPUS DEVELOPMENTS**

We are investing in a campus fit for the future. Our developments are creating outstanding new facilities for our students and researchers. Find out more about our exciting campus developments here:  
[www.birmingham.ac.uk/building](http://www.birmingham.ac.uk/building)

‘  
THE BEST THING ABOUT THE  
CAMPUS IS THAT IT’S LIKE A  
LITTLE TOWN, WITH MUSEUMS,  
A CLOCK TOWER, SHOPS,  
MARKETS...  
’

*Haroon, fourth-year Medicine,  
from Birmingham*

### STUDENT SAYS:

‘THERE ARE SO MANY  
SOCIETIES ON OFFER,  
IT’S A GREAT  
OPPORTUNITY TO  
MEET PEOPLE.’

### RACHEL, FROM BURY

#### Fourth-year Biological Sciences with Year Abroad

Birmingham’s campus is so spacious and green. Despite being in a busy city, it feels bright, open and close to nature. Unlike other campus universities, which are compact and overshadowed by huge concrete buildings, this campus is beautiful. The balance between buildings and green space is just right. During the busy seasons or exams, the green spaces become areas to relax, with students gathering for a break, to eat lunch or maybe just get a bit of studying done in the fresh air! When I visited I loved how it was a campus university, a place just for students, yet still within a city. Everything is in one place but is only a short and cheap train ride away from the rest of the city.

I have also been heavily involved in the Christian Union (CU) since my first year. As a young Christian, I was very anxious about coming to university and getting swallowed up in student

culture. Here, I found a community of like-minded people, helping me to grow in my faith and sharing it with other people on campus. We hold outreach events all through the year, from carol concerts in the Great Hall, to bi-weekly lunch bars, to one massive week of events, talks, food and fun in February. Even if the CU doesn’t end up being the place for you, they provide so much help in getting stuck in to a church, with a church guide and church reps available to all students.

As someone who isn’t really interested in clubbing or drinking heavily (like a lot of students are) I was quite anxious about coming to university because I thought I wouldn’t fit in. Turns out I was totally wrong and there are loads of people just like me! By joining societies I could find like-minded people and have a great social life outside of Broad Street!







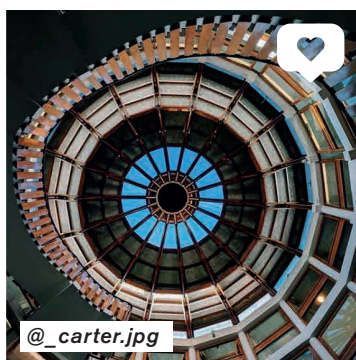
ASTON  
WEBB



@harvey\_uob



@eaad\_at\_uob



@\_carter.jpg

“ I REALLY WANTED TO  
EXPERIENCE A CAMPUS  
UNIVERSITY AND LIVE IN A  
STUDENT BUBBLE FOR A  
FEW YEARS BEFORE I HAD  
TO ENTER THE REAL WORLD.”

*Thivya, third-year International Relations, from London*

EXPLORE MORE OF WHAT'S GOING ON, ON CAMPUS:

[WWW.BIRMINGHAM.AC.UK/CAMPUSLIFE](http://WWW.BIRMINGHAM.AC.UK/CAMPUSLIFE)



# YOUR CAMPUS

QUEEN  
ELIZABETH  
HOSPITAL

THE  
MEDICAL  
SCHOOL

UNIVERSITY  
STATION

When you step onto campus, you are immersed in beautiful redbrick buildings, stunning new architecture and green open spaces.

We have our own railway station on campus, which means you are less than ten minutes from the buzzing city centre. The University's Medical School is also only a stone's throw from the Queen Elizabeth Hospital Birmingham, providing medical science students with access to outstanding learning opportunities.

We recently opened our Green Heart, a striking new parkland. Measuring over 12 acres, the Green Heart provides a unique space for performances, socialising, meeting and studying, while opening up views across campus, as envisaged in the 1920s. The parkland also incorporates study spaces, a new cafe and a grass auditorium.





“ I REALLY LOVE THE  
ATMOSPHERE ON CAMPUS,  
IT MAKES ME FEEL LIKE A  
‘PROPER’ STUDENT. ”

*Georgia, third-year Materials Engineering, from Birmingham*

GREEN HEART  
NOW OPEN

TO SPORT  
& FITNESS



# ACCOMMODATION

## AT BIRMINGHAM

At Birmingham, we have a range of accommodation options available to you. Wherever you choose, you'll find a safe and friendly home from home.



PRITCHATTS  
PARK

### CARTER, FROM MANCHESTER

#### Second-year Mechanical Engineering

I stayed in University accommodation during my first year, on Pritchatts Park, and loved it. It was lovely living just doors away from my friends. It certainly feels safe and is very accessible to campus and local shops. It was super daunting at first, but I certainly had nothing to worry about! The undergraduate guarantee scheme really put my mind at ease, knowing that as a first year I was guaranteed accommodation. It meant I could focus on more important things like how I was going to cook for myself!

The thing I loved most about living in student accommodation is getting to know people from different courses and different parts of the world; people who you wouldn't normally get the chance to

meet. It is probably the biggest chance you get to meet so many new people at once. I currently live in Selly Oak, an area just south of campus. It is where a lot of students choose to live when they move out of University accommodation. Selly Oak has a big student-community feel. The events held by the University make it so easy to meet new people. There are so many events held on accommodation sites, it's so easy to make friends.

One piece of advice I would give to someone living in accommodation for the first time is to remember that everyone is in the same situation! Everyone is feeling the same nerves and excitement.





## BETH, FROM THE ISLE OF WIGHT



### Third-year Geography

I lived in Mason on the Vale Village in my first year of university. This gave me the independence of cooking for myself and to choose what I ate, as well as having the privacy of my own bathroom. It was one of the more expensive options but I loved the dynamic of the flat environment and having my own bathroom provided me with some personal space.

The social life for me was great in the first year – you make friends with your flatmates and have the opportunity to have parties in your flat. The Duck and Scholar on the Vale also host events and

you are only a short walk from the Guild where social activities are held such as Fab 'N' Fresh and Sports Night.

Make sure you bring personal home comforts to decorate your uni room – I brought loads of pictures with me and fairy lights, which made my room so much more cosy and homely – it makes all the difference if you feel a bit homesick!

The undergraduate guarantee scheme provides a sense of security for students when they are applying to university as you know you are guaranteed to get at least some form of accommodation.

### FACT:

WE OFFER A RANGE OF ACCOMMODATION INCLUDING EN-SUITE SINGLE BEDROOMS, SHARED BATHROOMS AND STUDIOS.



VALE  
VILLAGE

## STUDENT SAYS:

'DEFINITELY COME  
PREPARED WITH  
A FANCY DRESS  
OUTFIT!'

## ELLIOT, FROM LONDON

## Third-year Civil and Railway Engineering

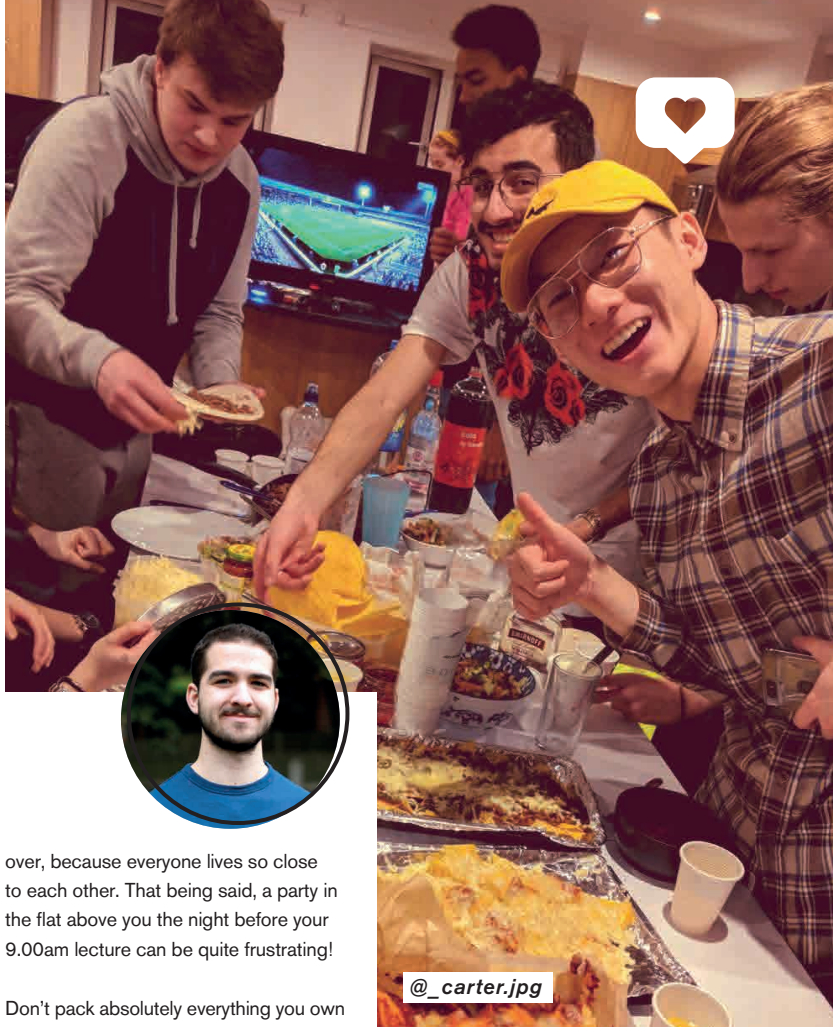
I lived in Liberty accommodation in my first year (near Five Ways). I shared a flat with five other students from the University, and we had a spacious kitchen and en-suite bathrooms. The only drawback was that it was quite a trek to campus!

There are aspects of living in Liberty that I took for granted – having a reception that took your parcels, having bills included in your rent (which meant no excessive paperwork or extra hassle on top of studying), and great parking and bike storage facilities, for example. It was a bit like living in a hotel in some ways.

Because everyone is in the same boat – eager to start their degree, but also unsure about being independent and living away from home – everyone tends to bond quite easily. Living across the hall from your new mates also makes it really easy to organise plans, or to invite people

over, because everyone lives so close to each other. That being said, a party in the flat above you the night before your 9.00am lecture can be quite frustrating!

Don't pack absolutely everything you own into your parent's car – you won't use half of the stuff you bring, or you won't have the space for it in your cupboard.



@\_carter.jpg

I HAD ONE OF THE  
BEST YEARS OF MY  
LIFE IN UNIVERSITY  
ACCOMMODATION  
IN MY FIRST YEAR.

*Sarah, fourth-year Psychology with  
Psychological Practice, from London*



## RUMALI, FROM POOLE

### Second-year Political Science and International Relations

I lived in Tennis Courts on The Vale in my first year and I had a very positive experience. It had recently been refurbished so our living space and appliances were all very modern. You can only gain entry with your student card, so I always felt really safe.

I absolutely loved living on The Vale. I felt part of this fun student bubble and it was nice living in blocks of so many other students. I was never bored.

I was not on Meal Plan and really enjoyed being self-catered. I went on a year abroad so it wasn't my first experience having to do big food shops for myself, but for a lot of my friends it was, as it was the first time they lived away from home. I enjoyed the freedom and flexibility to buy whatever food I wanted whenever I wanted it. It was also useful in terms of learning how to budget and also how to cook meals for yourself!

The Duck and Scholar at The Vale is really great and always super busy – but in a good way. There are also great cocktail deals every Saturday and the standard and quality of the drinks is amazing. You meet lots of new people.

When choosing accommodation, sometimes it's worth sacrificing some luxuries such as en-suites for an authentic student experience. The best/most fun accommodation available, are usually not the most expensive.



THE VALE  
VILLAGE

# A PLACE TO CALL HOME



Coming to Birmingham might be your first time living away from where you grew up. Whatever you choose, you will find a range of safe, welcoming and friendly options. Visit our website for more information on the full range of accommodation available to you.

## SELLY OAK VILLAGE

Selly Oak Village is the closest village to campus and situated in the thriving student area of Selly Oak. Home to much of the student population, Selly Oak provides plenty of choice for bars, cafés, dining and supermarket shopping. In addition to Jarratt Hall, the Village is home to our newest development, Bournbrook, which is situated next to our sports pavilion, coffee shop and accommodation shop.

## THE VALE VILLAGE

Set in beautiful parkland, The Vale Village is home to nearly 3,500 undergraduate students and provides a wide range of accommodation to suit all needs and budgets. The Vale is centred on The Hub, offering a restaurant, café, bar and convenience store. The Hub also provides spaces for you to socialise and study so you can get to know your fellow residents.





### PRITCHATTS PARK VILLAGE

Pritchatts Park Village accommodates 740 students in self-catered residences with shared facilities and has a popular social centre at its heart. Recently refurbished, Leo's bar offers a modern lounge with a bar, large-screen television and games and study areas, providing a great space for you to relax and get to know everyone. Pritchatts Park is conveniently located close to the University railway station and Harborne Village, home to an array of pubs, restaurants and shops.

### UNDERGRADUATE GUARANTEE SCHEME

As a new first year, you're guaranteed a room, provided you have:

- Applied to the University of Birmingham through UCAS
- Met the terms of your offer and accepted it as your firm choice
- Submitted the application by 31 May (UK/EU students) or 31 July (international students)
- Confirmed by 1 September that you're coming to the University
- Come to the University of Birmingham on your own
- Applied for accommodation for a full academic year on a 42-week contract

### MEAL PLAN

If you choose accommodation with the Meal Plan option, you'll have a weekly budget added to your ID card, which you can spend at over 30 different places to eat and drink across the whole campus.

Meal Plan's flexible, cashless system isn't expected to cover every meal, seven days a week. You'll have the same kitchen facilities as a student in self-catered accommodation, so if you feel like cooking for yourself or eating in the city, you won't lose out; your budget will stay on your card to be used another time. Best of all, you get 10% off the full price of items that you purchase.

**FIND OUT MORE ABOUT ACCOMMODATION AT BIRMINGHAM:**  
[WWW.BIRMINGHAM.AC.UK/LIVING](http://WWW.BIRMINGHAM.AC.UK/LIVING)

# SUPPORTING YOU

## AT BIRMINGHAM

University is about independence. It's a time for self-discovery and adventure. You can expect to be challenged throughout your time with us, but you can also be reassured that support is available to you whatever your circumstances.

### BETH, FROM GODSTONE

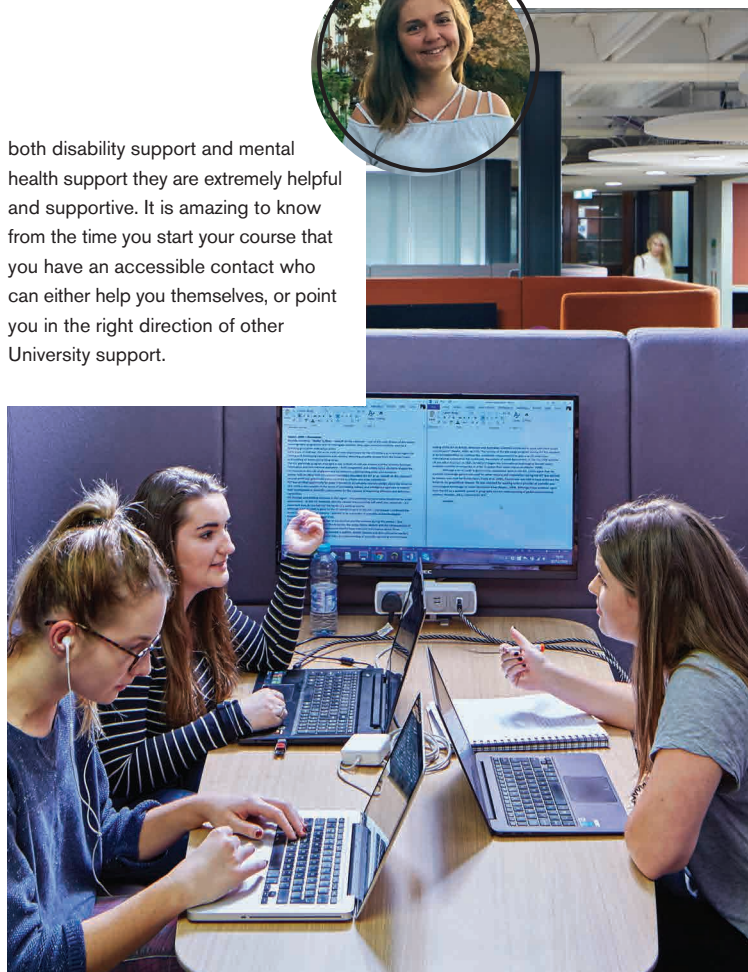
#### Third-year English with a Year Abroad

I have used the disability support and welfare services at university. As a visually impaired student, I have worked quite closely with the welfare team in my School and with disability support, mainly when it comes to making alternative arrangements for exams – like extra time, and having access to the text-to-speech software I use on the computer.

I have a disability key worker who I can contact whenever I need to. I contacted them for advice before I went on my year abroad and they were the person I spoke to before I started at Birmingham to sort out accommodation. I met my key worker at the start of university and we went through my Disabled Student Allowance (DSA) assessment and created a Reasonable Adjustment Plan (RAP), which states what adjustments I need during my time at university. This was great and I felt like it was a strong and encouraging start to university.

Inclusivity is essential and something Birmingham has done really well. The welfare team is incredible and for

both disability support and mental health support they are extremely helpful and supportive. It is amazing to know from the time you start your course that you have an accessible contact who can either help you themselves, or point you in the right direction of other University support.





**FACT:**

WE HAVE A MULTI-FAITH  
CHAPLAINCY ON CAMPUS  
FOR STUDENTS OF ALL  
FAITHS OR NONE.

[WWW.INTRANET.  
BIRMINGHAM.AC.UK/  
CHAPLAINCY](http://WWW.INTRANET.BIRMINGHAM.AC.UK/CHAPLAINCY)

**MOLLY, FROM LEICESTER****Third-year English Literature**

I made use of the counselling and welfare services in my first year. I found this incredibly useful and found that it has had a long-lasting impact on me. I also made use of the student mentor team which was invaluable to me although I would like to see greater access to this scheme for second and third years.



I do think it is important for universities to provide support, particularly for those students who have moved away from home to study as doing so can be a really stressful experience and when support networks are not well established (ie, no family around and only making new friends) it can be easy for people to slip through the net.



STUDENT  
HUB

i

**YOUR SUPPORT**

From your first day on campus until you graduate, there is a range of support services and facilities available to you whatever your needs may be. These include:

- Access to personalised support from a Counsellor or Wellbeing Practitioner should you need it, as well as Welfare Tutors in your School or department
- Self-help guides written by clinical psychologists and containing practical advice and support for a range of issues that may be affecting your sense of wellbeing
- Places to relax on campus, including our own art gallery and museum, to take time out from your studies
- A dedicated Student Hub at the heart of campus as your key point of contact, as well as an online service

**“ I ALWAYS RECEIVE IMMEDIATE RESPONSES AND MY NEEDS HAVE BEEN MET EXCELLENTLY EVERY TIME. ”**

*Josh, third-year Chemical Engineering, from Manchester*

**FIND OUT MORE ABOUT THE SUPPORT AVAILABLE TO YOU HERE:**

**[WWW.BIRMINGHAM.AC.UK/SUPPORT](http://WWW.BIRMINGHAM.AC.UK/SUPPORT)**

# WELCOMING STUDENTS FROM ALL BACKGROUNDS

**At Birmingham, we're committed to raising aspirations, improving motivation and encouraging students from all backgrounds to consider university.**

Our Pathways to Birmingham scheme supports Year 12 and 13 students with their progression to university and beyond. Each Pathway programme (which includes the Access to Birmingham (A2B) scheme) has a distinctive offer but all provide students with an insight into university study, the application process, graduate employability as well as supporting the transition to higher education. Upon successful completion of a Pathways programme, students will be eligible for an alternative offer (of up to two grades below the standard offer) and financial support.

## EAAD, FROM BIRMINGHAM

### Second-year Mathematics

I applied to Birmingham through A2B. It was such a massive help knowing that I had some leeway with my grades. When I got my results I had actually achieved the standard entry grades so I was also eligible for the A2B scholarship, which was a lot of help financially.

I visited the University of Birmingham at an A2B applicant day. Visiting the University gave me a taster of how university life can be. My favourite part was meeting so many new people. Through A2B, university also seemed a lot more achievable. Meeting new people and learning new things about Birmingham and what university would be like through A2B made the transition much easier.



I was always planning to go to university, but the A2B scheme further encouraged me to pursue that. Skills4Uni is an online study platform which introduced me to new ways of learning. This helped me progress further with my revision at A level and was really helpful. The course prepared me for areas of university life that I hadn't previously considered, and put me in a much better position to start university.

### FACT:

IN SUMMER 2018,  
25 FIRST-YEAR A2B  
STUDENTS HAD THE  
OPPORTUNITY TO  
VISIT HONG KONG.







## SOPHIE, FROM DUDLEY

### Second-year American and Canadian Studies



I always hoped I could go to university, but A2B really made that dream a reality through its provision of funds to take the pressure off the economic side of university.

The A2B scheme really helped me to achieve my dream of going to university through the financial element of the scheme. Were it not for the A2B Scholarship and Bursary, I could not have afforded to accept my place at university due to travel costs etc.

The academic assignment was a great way of supporting my transition from A level writing to degree-level writing. The assignment encouraged research into academic articles, showed me how to reference correctly and the feedback given from the assignment really helped me to get a feel for how university work was assessed and read by academic staff.

**TOP TIP:**  
EARLY APPLICATION  
IS PARTICULARLY  
IMPORTANT  
FOR MEDICINE  
AND DENTISTRY  
APPLICANTS.



*i*

### ALTERNATIVE OFFER

If you don't apply via the Pathways to Birmingham scheme, we still recognise the potential of students whose personal circumstances may have restricted achievement at school or college (often known as a Contextual Offer). This is normally one grade lower than the typical offer, but can differ depending on the subject you would like to study. To find out if you would be eligible, please visit: [www.birmingham.ac.uk/contextualoffer](http://www.birmingham.ac.uk/contextualoffer)

**TO FIND OUT MORE ABOUT PATHWAYS TO BIRMINGHAM AND CHECK YOUR ELIGIBILITY, VISIT: [WWW.BIRMINGHAM.AC.UK/PATHWAYS](http://WWW.BIRMINGHAM.AC.UK/PATHWAYS)**

# SPORT FOR ALL

Sport is a key part of life at Birmingham. Choose from 55 sports clubs, whether you're an elite athlete or a beginner, and play an active role in the British Universities and Colleges Sport (BUCS) League.



**FREDDIE, FROM BRISTOL**

Third-year Spatial Planning and Business Management

Sport at Birmingham is very good. It's known as being one of the best in the UK for sport. There is an amazing scholarship programme and it's easy to balance university work with professional sport as the University of Birmingham has many students that also play professionally.

If you are elite or just play for fun there are opportunities for both here in Birmingham across a huge range of sports, from American football to water polo – the range is ridiculous and with a new gym, it has some of the best facilities in the UK.



SPORT &  
FITNESS





“PARTICIPATION IN SPORTS HERE IS PHENOMENAL, THERE ARE LOTS OF HIGH-LEVEL SPORTS.”

*Rachel, second-year Biological Sciences with a Year Abroad, from Bury*

## AMBER, FROM PERSHORE

### Third-year English Literature



I am part of Triathlon, Cool Runnings, Sailing and Skydiving clubs! It's such a big part of my life, we have so many amazing sports teams and great facilities to do them in. I love the community and family feel of my sports teams and it's great after a long day at uni to go and slog out a great swim set or long run. It's a big part of maintaining my mental wellbeing while at university. For those who like to party there is 'Sports Night' fortnightly on Wednesdays. Each sports team organises their own fancy dress so you can see who is from which team. It's great fun.

If you're considering joining a team, just go for it! University is a great opportunity to try things you would never otherwise do,

or improve on your current sports. I did triathlon before uni (although many of our members didn't!) but since joining I have gained sailing qualifications, gone yachting around Greece and am currently working toward a skydiving licence. I would never have done that before!



*Sarah MacDonald represented Great Britain in the 1,500m at the World Championships in 2017*

### FACT:

UBSPORT HOSTS MANY EVENTS THROUGHOUT THE YEAR INCLUDING NATIONAL LEAGUES AND TOURNAMENTS.

“SPORT IS A GREAT WAY TO GET MORE INVOLVED IN THE UNIVERSITY COMMUNITY.”

*Verity, second-year Liberal Arts and Natural Sciences, from Brighton*

## SAM, FROM BIRMINGHAM

### Second-year Biomedical Science



Last year I played with the MedSoc Badminton Society. Although there are options to play in national competitions and represent the University, there is no obligation to do this and people are more than welcome to play socially. I have met so many people playing badminton last year from other courses that I would otherwise not have come into contact with. Every Wednesday afternoon is kept free (no teaching occurs during that time). Although this time can be utilised for a whole range of activities, students often take up sports and many of the University sports societies have their practice sessions during this period. The facilities within the Sport & Fitness

Club are fantastic and can accommodate practically any activity that you could think of (archery, badminton, swimming, weightlifting – to name a few). New students should visit the array of sport societies and their stalls during Fresher's Week. All of these societies have taster sessions at the start of the year for you to try out that sport and get a flavour of what they have to offer (the taster sessions are usually free!). Don't be shy – if you are interested in a sport then try it out!

I use the sports halls in the University's Sport & Fitness Club every single Sunday. From my experience the halls and facilities always look immaculate, they're

well-maintained, always heated and are large enough to accommodate a substantial number of students.

*i*

### THE UNIVERSITY'S SPORT & FITNESS CLUB HAS A RANGE OF WORLD-CLASS FACILITIES AND SERVICES INCLUDING:

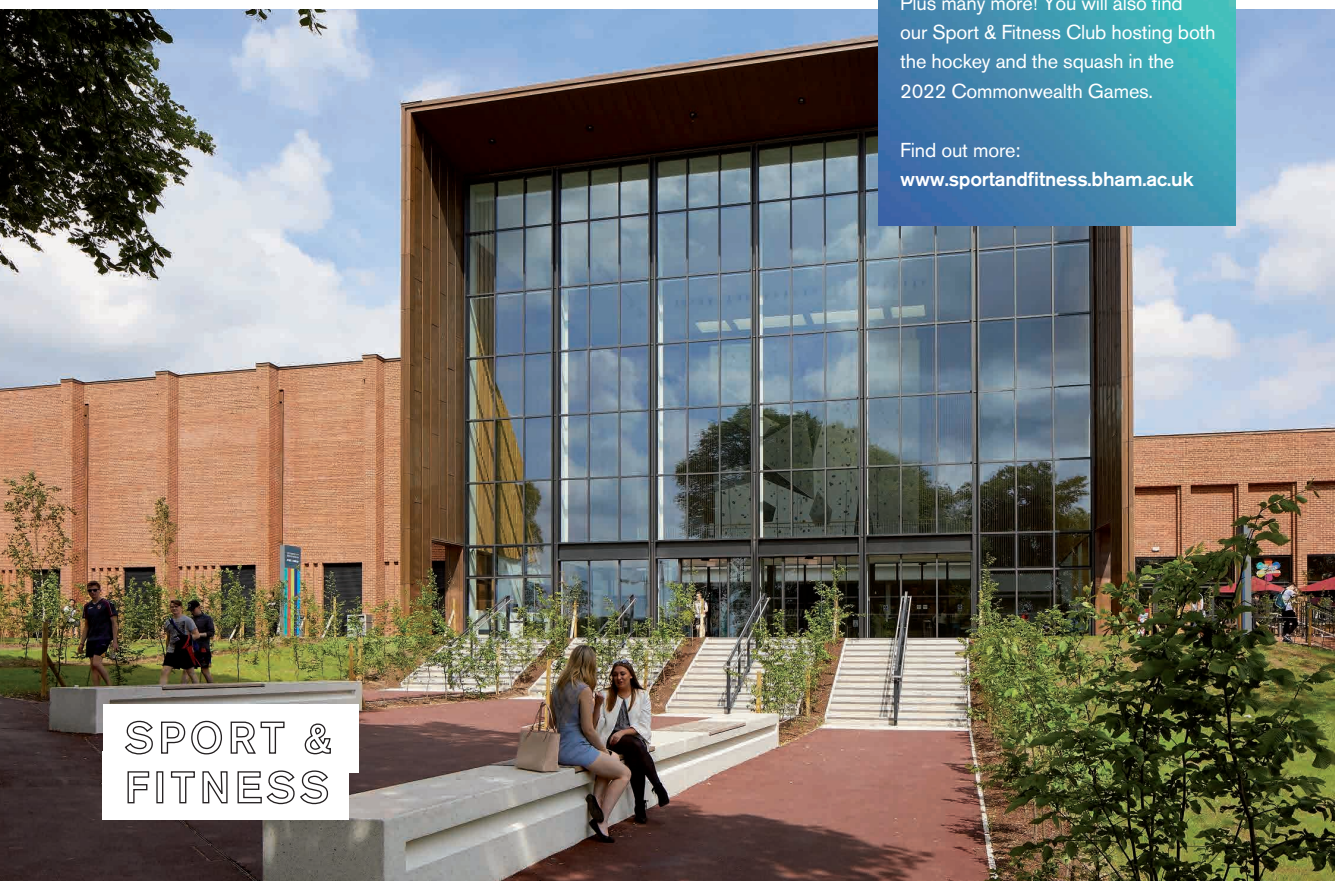
- 50m swimming pool
- 200+ station gym
- Over 150 exercise classes per week
- Six glass-back squash courts
- Ten-metre climbing wall

Plus many more! You will also find our Sport & Fitness Club hosting both the hockey and the squash in the 2022 Commonwealth Games.


Find out more:

[www.sportandfitness.bham.ac.uk](http://www.sportandfitness.bham.ac.uk)

SPORT &  
FITNESS







**BIRMINGHAM IS DEFINITELY  
A PLACE TO TRY OUT NEW  
SPORTS IF YOU'VE NEVER DONE  
IT BEFORE. THERE'S LOADS  
OF OPPORTUNITIES AVAILABLE.**

*Rachel, fourth-year Biosciences with a Year Abroad, from Bury*

## **BETH, FROM THE ISLE OF WIGHT**

Third-year Geography with a Year Abroad



Birmingham is extremely successful at sports and has plenty of options for those who want to study a sports-related degree, as well as take up a sport professionally or casually. The University teams provide the opportunity to represent the University and improve through the years while competing against other universities, however there are also casual options if you just

want to play for fun and fitness. There are sporting opportunities available within your course too – different Schools will have casual sports teams which also provides a healthy dose of competition!

Try something new and adventurous, just throw yourself into the deep end!

*i*

## **COMMONWEALTH GAMES**

In 2022, Birmingham will host the Commonwealth Games, which means if you choose Birmingham you'll be in the centre of the action. Opportunities to be a volunteer for the Games are available, and you can be at the heart of campus as we play host to both hockey and squash.

## **SPORTS SCHOLARSHIPS**

THE UNIVERSITY OFFERS A SPORTS SCHOLARSHIP PROGRAMME, WHICH PROVIDES A HOLISTIC APPROACH TO DEVELOPING TALENTED ATHLETES. FOR MORE DETAILS, VISIT: [WWW.SPORTANDFITNESS.BHAM.AC.UK/SCHOLARSHIPS](http://WWW.SPORTANDFITNESS.BHAM.AC.UK/SCHOLARSHIPS)

# STUDY ABROAD

## WITH BIRMINGHAM

Take advantage of all of the opportunities available to you at university, including spending time studying abroad. From France to Australia, there are lots of opportunities for Birmingham students to explore a new country, learn about other cultures and make friends for life.

### BETH, FROM GODSTONE

Third-year English with a Year Abroad, currently at  
Northeastern University in Boston, USA



As an English Literature student, I have always had an interest in American literature so I wanted to go and study it in its original context. I wanted to experience living in another country too, and have a chance to see another part of the world. I'm currently studying at Northeastern University in Boston, USA and I am having an amazing time!

When I was applying to universities, I researched what kind of study abroad opportunities each university offered, because I knew it was something I wanted to do. I attended the Year Abroad talks at open days and on my offer-holder visit days, and read the information available on Birmingham's website.

When I was researching universities during my A levels, Birmingham stood out to me as a university that had great options for studying abroad, and this was a huge factor in me putting Birmingham as my first choice.

It's a huge step to move to another country, and really pushes you outside your comfort zone. It's a great experience that you might not have the chance to do after university. There is some support in place through both your home university and the host university, so it's a very safe way to have this experience.

My favourite thing about studying abroad is being able to explore a whole new country with people from all over the world.

If you are considering studying abroad; do it! It can seem daunting and that's a feeling, but it's such an amazing opportunity to have! Just go for it, do lots of research so you end up going somewhere you would like to live and explore.

### GLOBAL CAMPUS

If you choose not to go abroad, you still have a global experience on campus, with a community of students from over 150 countries.







# MY YEAR ABROAD WAS THE BEST YEAR OF MY LIFE!

*Rachel, fourth-year Biological Sciences with a Year Abroad, from Bury. Spent a year at the University of British Columbia in Vancouver, Canada*

@ginge\_in\_brum

## BETH, FROM THE ISLE OF WIGHT

Third-year Geography with a Year Abroad, currently at the University of New South Wales, Australia



I noticed that the University of Birmingham offered the Year Abroad course which appealed to me as lots of other universities only offer one semester.

Study abroad for me was a great mix of experiencing a completely different educational experience and culture as well as incorporating travel, which I love. I wanted to do something truly independent and out of my comfort zone to help me grow as a person and so far it has been an amazing experience!

I have been on my study abroad year for nearly four months now and I can honestly say I'm having the time of my life. It is extremely daunting at first because of the massive lead up and the pressure of leaving your friends and family behind, however, this fades instantly once you fully immerse yourself in your new surroundings. My experience so far has been full of friendship and new learning experiences. My confidence

has soared since arriving in Australia; I would say I was already a confident person before I studied abroad, however, the whole experience breaks down your personal barriers and pushes you to make new friendships and try new things. Study abroad allows personal development, an increase in life skills, communication qualities as well as the opportunity to see the world.

One of my favourite things has to be meeting new people from a range of different places. Everybody has a different culture, understanding and point of view, therefore it is enriching to study and socialise with a diverse group of individuals. I know now that if I want to travel to Canada, Switzerland, America or the Netherlands for example, I will have a friendly face and a great friend to catch up with, and I have my year abroad to thank for that!

Do your research into the universities on offer to see if they meet what you want from your year abroad. My advice to students concerned about spending a long time away would be: a year may seem like a long time but it really is not a long time at all in the span of your whole life! Four months have sped by and I know the rest of this year is going to go past so quickly! The people you are leaving behind will still be there for you when you get back, so try not to worry about it, just remember FaceTime exists!



### SPEND TIME OVERSEAS

Studying abroad doesn't have to mean spending a year overseas. Spend a semester at an international university, or undertake a placement or internship. See where the opportunities can take you.

**FIND OUT MORE ABOUT THE STUDY ABROAD OPPORTUNITIES THAT ARE AVAILABLE TO YOU AT BIRMINGHAM: [WWW.BIRMINGHAM.AC.UK/STUDYABROAD](http://WWW.BIRMINGHAM.AC.UK/STUDYABROAD)**

# MAKE AN IMPACT

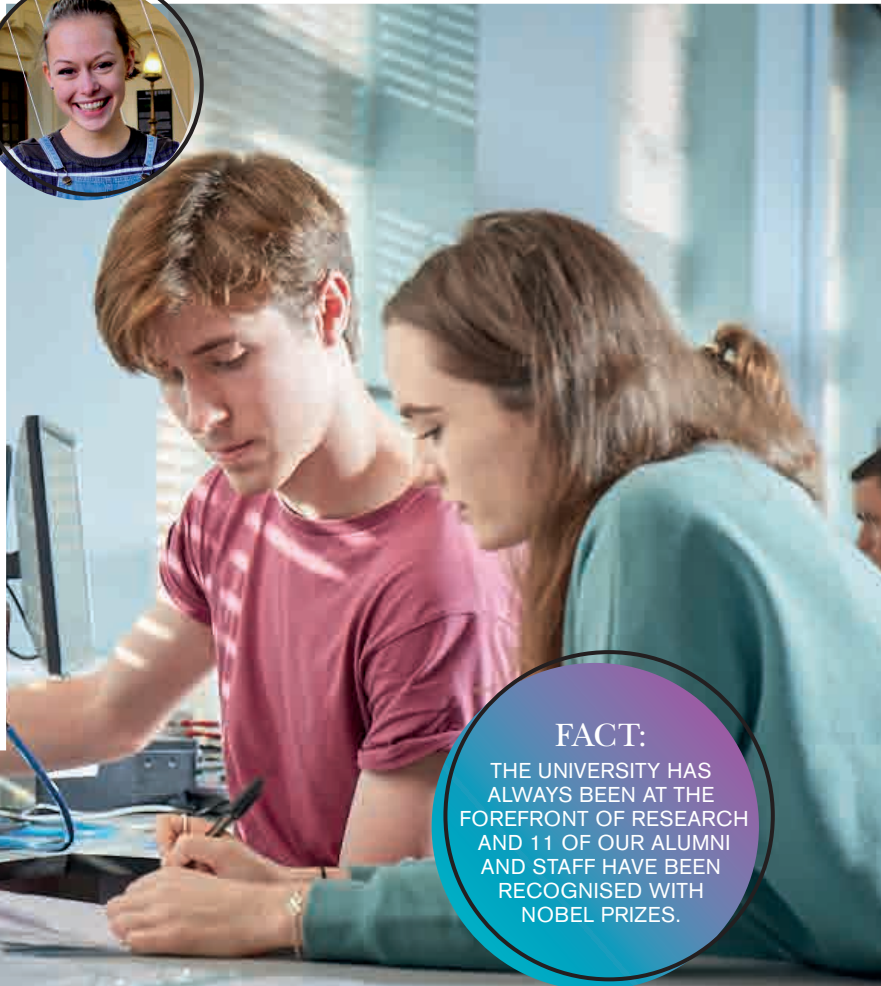
The research carried out at Birmingham has had an impact on the city, the region and the world. Learn from global experts, and take the opportunity to play your part in our global success.

## AMBER, FROM PERSHORE

### Third-year English Literature

It's great being part of a university community that makes a difference in the world through our international research. Internationally, Birmingham has opened a campus in Dubai and it has many connections all over the world. It's one thing I love about studying here, it really is an international community.

The College I am part of allows students to really get involved in research through a summer scholarship. It's a unique opportunity and is great for having an insight into the world of the academics I work with as well as introducing me to the world of independent research. Until I took part in it I'd never even considered doing a Masters.



### FACT:

THE UNIVERSITY HAS ALWAYS BEEN AT THE FOREFRONT OF RESEARCH AND 11 OF OUR ALUMNI AND STAFF HAVE BEEN RECOGNISED WITH NOBEL PRIZES.



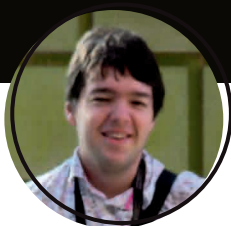


## SAM, FROM BIRMINGHAM

### Second-year Biomedical Science

The University has had and continues to have a substantial impact on the local and wider world. Whether it be developing the world's first variable-pace pacemaker in the 1960s, or the present-day TESS mission looking for exoplanets – the research that is undertaken in Birmingham is meaningful, impactful and frequently produces tangible benefits to the local and international community.

Last summer, I spent four months as part of the microcirculation research group, being heavily involved in their PhD, Masters and clinical research projects.



The research groups spread around the University are often more than happy to take students under their wing to allow them to get involved and experience the research side of science that they might not otherwise be fully exposed to during the academic year.

It's been incredibly easy to get involved with research – if there's a particular topic that captures your attention then there is more than likely a research group associated with it within the University.



## ELLIOT, FROM LONDON

### Third-year Civil and Railway Engineering

It took me a while to realise how important some of the research at Birmingham is. It was only when I started seeing some of my lecturers on Birmingham Heroes posters around campus, about the research that we do, that I started to take notice. In particular, the research undertaken by the Birmingham Centre for Railway Research and Education (BCRRE) is of particular interest, as it ties in closely to the content in my degree course.

Internationally, the University definitely has a positive impact, for example, the new Dubai campus allows students to study in the Middle East for an accredited degree from a Russell Group university. Several of my lecturers and researchers also frequently travel abroad to give lectures at institutions or organisations in continental Europe, America and Asia – I'm slightly jealous!

*i*

## HOW CAN YOU GET INVOLVED IN RESEARCH?

Take part in summer internships to gain insight into the wide-reaching research undertaken by our academics and PhD students. Talk to your lecturers about their research. Maybe a career in academia could be for you?

**FIND OUT MORE ABOUT HOW OUR RESEARCHERS ARE TACKLING ANTIBIOTIC RESISTANCE, UNRAVELLING THE UNIVERSE THROUGH GRAVITATIONAL WAVE RESEARCH AND IMPROVING YOUTH MENTAL HEALTH:**

**[WWW.BIRMINGHAM.AC.UK/RESEARCH](http://WWW.BIRMINGHAM.AC.UK/RESEARCH)**

# WHAT ELSE CAN I DO WITH...?

Choosing a university is a big decision and choosing the right course can sometimes be overwhelming. Just because you studied English at A level it doesn't mean you have to study it at degree level. To give you some inspiration, have a look at just a few of the alternative courses you can study at Birmingham with some of your favourite subjects.

## ENGLISH:

- American and Canadian Studies BA
- Drama and Theatre Arts BA
- Education BA
- English and Creative Writing BA
- Law LLB
- Liberal Arts and Natural Sciences BA/BSc
- Political Science BA
- Social Work BA

## GEOGRAPHY:

- Education BA
- Environmental Science BSc/MSci
- Geography and Urban and Regional Planning BSc
- Geology BSc/MSci
- Geology and Physical Geography BSc/MSci

## PHYSICS:

- Civil Engineering BSc
- Materials Science and Engineering BEng/MEng
- Nuclear Engineering MEng
- Physics and Astrophysics BSc/MSci
- Physics with Particle Physics and Cosmology BSc/MSci
- Theoretical Physics BSc/MSci

## PHYSICAL EDUCATION:

- Applied Golf Management Studies BSc
- Human Biology BSc/MSci
- Physiotherapy BSc
- Sport, Exercise and Health Sciences BSc
- Sport, Physical Education and Coaching Science BSc

## BIOLOGY:

- Biological Sciences BSc/MSci
- Biomedical Materials Science BMedSc
- Environmental Science BSc/MSci
- Human Biology BSc/MSci
- Medicine and Surgery MBChB
- Sport, Exercise and Health Sciences BSc

## CHEMISTRY:

- Biochemistry BSc/MSci
- Biomedical Science BSc
- Chemical Engineering BEng/MEng
- Environmental Science BSc/MSci
- Materials Science and Engineering BEng/MEng
- Pharmacy MPharm



## MATHS:

- Aerospace Engineering BEng/MEng
- Accounting and Finance BSc
- Computer Science BSc/MSci
- Economics BSc
- Education BA
- Materials Science and Engineering BEng/MEng
- Mechatronic and Robotic Engineering BEng/MEng
- Money, Banking and Finance BSc
- Music BMus

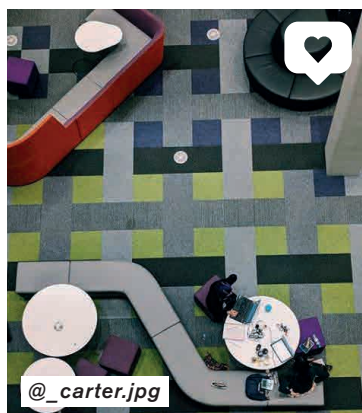
## LANGUAGES:

- English Language and Literature BA
- International Relations with Language BSc
- Modern Languages and English BA
- Modern Languages BA
- Policy, Politics and Economics BA
- Russian Studies with International Relations BA

## LIBERAL ARTS AND NATURAL SCIENCES

Other programmes, such as Joint and Combined Honours or Liberal Arts and Natural Sciences offer you the chance to build a personalised programme of study based on your interests across the arts, sciences and social sciences.

Remember, some courses including Law and Social Policy do not require you to have studied specific subject areas and welcome applications from students with humanities or science qualifications.

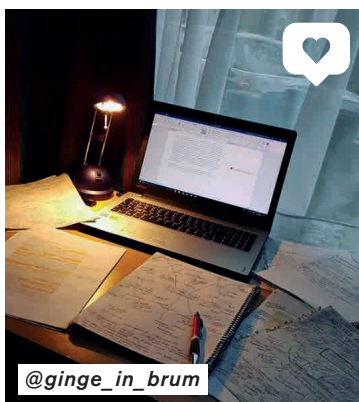


## HISTORY:

- African Studies BA
- Ancient and Medieval History BA
- Archaeology and Ancient History BA
- Archaeology and Anthropology BA
- Classics BA
- History of Art BA
- Political Science BA
- Social Work BA

## RELIGIOUS STUDIES:

- Philosophy BA
- Philosophy, Religion and Ethics BA
- Politics, Religion and Philosophy BA
- Social Policy and Criminology BA
- Sociology BA
- Theology and Religion BA



## DEGREE APPRENTICESHIPS

We are committed to new ways of learning and we are working with industry partners to offer programmes that will help you develop the skills that employers are looking for. Our first degree apprenticeships see a collaboration between the University's School of Computer Science and industry partners and we are working with other employers to develop future programmes.

**TO SEE THESE COURSES AND FIND MORE COURSES YOU MIGHT LIKE,  
CHECK OUT OUR COURSE DIRECTORY, STARTING ON PAGE 42.**

# COURSE DIRECTORY

Arts and Law www.birmingham.ac.uk/cal		Engineering and Physical Sciences www.birmingham.ac.uk/eps		Life and Environmental Sciences www.birmingham.ac.uk/les		Medical and Dental Sciences www.birmingham.ac.uk/mds		Social Sciences www.birmingham.ac.uk/ssss		Liberal Arts and Natural Sciences www.birmingham.ac.uk/lans	
Course		UCAS Code	Course length	Typical entry requirements			Study Abroad	Year in Industry	Additional Information		Course finder link
				A level	IB Higher Level	BTEC					
	Accounting and Finance BSc	N400	3	AAB	6, 6, 5	●			GCSE Mathematics at grade 6/B		www.birmingham.ac.uk/N400
	Aerospace Engineering BEng	H400	3	AAB	6, 6, 5	■			A Level Mathematics and either Physics or Chemistry		www.birmingham.ac.uk/H400
	Aerospace Engineering MEng	H402	4	AAA	6, 6, 6	■			A Level Mathematics and either Physics or Chemistry		www.birmingham.ac.uk/H402
	African Studies BA	T500	3	BBB	5, 5, 5	●	✓				www.birmingham.ac.uk/T500
	African Studies with Development BA	T5L9	3	BBB	5, 5, 5	●	✓				www.birmingham.ac.uk/T5L9
	American and Canadian Studies BA	T790	3	ABB	6, 5, 5	●	✓				www.birmingham.ac.uk/T790
	American and Canadian Studies with Year Abroad BA	T700	4	AAB	6, 6, 5	●	✓				www.birmingham.ac.uk/T700
	Ancient and Medieval History BA	V116	3	ABB	6, 5, 5	●	✓				www.birmingham.ac.uk/V116
	Ancient History BA	V110	3	ABB	6, 5, 5	●	✓				www.birmingham.ac.uk/V110
	Anthropology and Political Science BA	LL62	3	ABB	6, 5, 5	●					www.birmingham.ac.uk/LL62
	Applied Golf Management Studies BSc	N290	3	ABB	6, 5, 5	●			GCSE Mathematics, English and a science at a minimum of grade 4/C. Handicap of six for males, eight for females. For more details and full academic and non-academic requirements, please see course finder.		www.birmingham.ac.uk/N290
	Archaeology and Ancient History BA	VVC4	3	ABB	6, 5, 5	●	✓				www.birmingham.ac.uk/VVC4
	Archaeology and Anthropology BA	LV64	3	ABB	6, 5, 5	●	✓				www.birmingham.ac.uk/LV64
	Artificial Intelligence and Computer Science BSc	GG47	3	AAA	6, 6, 6	■			A level Mathematics grade A required		www.birmingham.ac.uk/GG47
	Artificial Intelligence and Computer Science with a Year in Industry BSc	GG74	4	AAA	6, 6, 6	■		✓	A level Mathematics grade A required		www.birmingham.ac.uk/GG74
	Biochemistry (Genetics) BSc	CC74	3	AAB	6, 6, 5	■			A level Chemistry and a second science°. Minimum of five GCSEs to include Mathematics, English and double award science at grade 4/C.		www.birmingham.ac.uk/CC74
	Biochemistry BSc	C700	3	AAB	6, 6, 5	■			A level Chemistry and a second science°. Minimum of five GCSEs to include Mathematics, English and double award science at grade 4/C.		www.birmingham.ac.uk/C700
	Biochemistry MSci	C703	4	AAA	6, 6, 6	■			A level Chemistry and a second science°. Minimum of five GCSEs to include Mathematics, English and double award science at grade 4/C.		www.birmingham.ac.uk/C703
	Biochemistry with an International Year BSc	C007	4	AAA	6, 6, 6	■	✓		A level Chemistry and a second science°. Minimum of five GCSEs to include Mathematics, English and double award science at grade 4/C.		www.birmingham.ac.uk/C007



Biochemistry with Professional Placement MSci	C702	4	AAA	6, 6, 6	■	✓	A level Chemistry and a second science*. Minimum of five GCSEs to include Mathematics, English and double award science at grade 4/C.	www.birmingham.ac.uk/C702
Biochemistry with Study in Continental Europe BSc	C701	4	AAB	6, 6, 5	■	✓	A level Chemistry and a second science*. Minimum of five GCSEs to include Mathematics, English and double award science at grade 4/C and grade 6/B in a relevant foreign language (French, German or Spanish).	www.birmingham.ac.uk/C701
Biological Sciences (Genetics) BSc	C400	3	AAB	6, 6, 5	■		A level Biology/Human Biology and a second science*. Minimum of five GCSEs to include Mathematics, English and double award science at grade 4/C.	www.birmingham.ac.uk/C400
Biological Sciences (Zoology) BSc	C300	3	AAB	6, 6, 5	■		A level Biology/Human Biology and a second science*. Minimum of five GCSEs to include Mathematics, English and double award science at grade 4/C.	www.birmingham.ac.uk/C300
Biological Sciences BSc	C100	3	AAB	6, 6, 5	■		A level Biology/Human Biology and a second science*. Minimum of five GCSEs to include Mathematics, English and double award science at grade 4/C.	www.birmingham.ac.uk/C100
Biological Sciences MSci	C105	4	AAA	6, 6, 6	■		A level Biology/Human Biology and a second science*. Minimum of five GCSEs to include Mathematics, English and double award science at grade 4/C.	www.birmingham.ac.uk/C105
Biological Sciences with an International Year BSc	C001	4	AAA	6, 6, 6	■	✓	A level Biology/Human Biology and a second science*. Minimum of five GCSEs to include Mathematics, English and double award science at grade 4/C.	www.birmingham.ac.uk/C001
Biological Sciences with Professional Placement MSci	C102	4	AAA	6, 6, 6	■	✓	A level Biology/Human Biology and a second science*. Minimum of five GCSEs to include Mathematics, English and double award science at grade 4/C.	www.birmingham.ac.uk/C102
Biological Sciences with Study in Continental Europe BSc	C101	4	AAB	6, 6, 5	■	✓	A level Biology/Human Biology and a second science*. Minimum of five GCSEs to include Mathematics, English and double award science at grade 4/C and grade 6/B in a relevant foreign language (French, German or Spanish).	www.birmingham.ac.uk/C101
Biomedical Materials Science BMedSc	BJ95	3	AAB	6, 6, 5	■		Two sciences required at A level, one of which has to be Biology or Chemistry	www.birmingham.ac.uk/BJ95
Biomedical Science BSc	B900	3	AAB	6, 6, 5	✗		Two science A levels from Biology, Chemistry, Mathematics, or Physics; GCSE grade 6/B in Mathematics, Biology and Chemistry (or double award science)	www.birmingham.ac.uk/B900
Business Management (Year in Industry) BSc	N201	4	AAB	6, 6, 5	●	✓	GCSE Mathematics and English at grade 6/B	www.birmingham.ac.uk/N201
Business Management BSc	N200	3	AAB	6, 6, 5	●		GCSE Mathematics and English at grade 6/B	www.birmingham.ac.uk/N200
Business Management with Communications and Year in Industry BSc	N191	4	AAB	6, 6, 5	●	✓	GCSE requirements are GCSE Maths and English at grade 6/B	www.birmingham.ac.uk/N191
Business Management with Communications BSc	N190	3	AAB	6, 6, 5	●		GCSE Mathematics and English at grade 6/B	www.birmingham.ac.uk/N190
BSc Business Management with Marketing and a Year in Industry BSc	N203	4	AAB	6, 6, 5	●	✓	GCSE requirements are GCSE Maths and English at grade 6/B	www.birmingham.ac.uk/N203
Business Management with Marketing BSc	N202	3	AAB	6, 6, 5	●	✓	GCSE Mathematics and English at grade 6/B	www.birmingham.ac.uk/N202
Certificate in English Law	-	1					Applications are made through the University's International Office	www.birmingham.ac.uk/international
Chemical Engineering (International Study) MEng	H801	4	A*AA/AAAA	7, 6, 6	■	✓	A level Mathematics and Chemistry required	www.birmingham.ac.uk/H801

● BTEC Extended Diploma considered (in relevant subject)

■ BTEC only considered when combined with other qualifications

◆ BTEC considered on a case-by-case basis

✗ Not accepted

° See course finder for details of subjects considered to be a science

Footnote: IB scores are for Higher Level subjects unless otherwise stated and we require 32 points overall in addition

In relation to GCSE reforms we can confirm our position in terms of equivalencies: A\* = 8, A = 7, B = 6, C = 4. For more details, visit [www.birmingham.ac.uk/newgcse](http://www.birmingham.ac.uk/newgcse)

# COURSE DIRECTORY CONTINUED

Course	UCAS Code	Course length	Typical entry requirements			Study Abroad	Year in Industry	Additional information	Course finder link
			A level	IB Higher Level	BTEC				
Chemical Engineering BEng	H800	3	A*AA/AAAA	7, 6, 6	■			A level Mathematics and Chemistry required	<a href="http://www.birmingham.ac.uk/H800">www.birmingham.ac.uk/H800</a>
Chemical Engineering MEng	H810	4	A*AA/AAAA	7, 6, 6	■			A level Mathematics and Chemistry required	<a href="http://www.birmingham.ac.uk/H810">www.birmingham.ac.uk/H810</a>
Chemical Engineering Foundation Year BEng/MEng	H882	4/5			◆			Offers will depend on previous study. See course finder for details.	<a href="http://www.birmingham.ac.uk/chemical-engineering-foundation">www.birmingham.ac.uk/chemical-engineering-foundation</a>
Chemical Engineering with Industrial Study BEng	HW10	3+1	A*AA/AAAA	7, 6, 6	■		✓	A level Mathematics and Chemistry required	<a href="http://www.birmingham.ac.uk/HV10">www.birmingham.ac.uk/HV10</a>
Chemical Engineering with Industrial Study MEng	H802	4+1	A*AA/AAAA	7, 6, 6	■		✓	A level Mathematics and Chemistry required	<a href="http://www.birmingham.ac.uk/H802">www.birmingham.ac.uk/H802</a>
Chemical Engineering with International and Industrial Study MEng	HW10	4+1	A*AA/AAAA	7, 6, 6	■	✓	✓	A level Mathematics and Chemistry required	<a href="http://www.birmingham.ac.uk/HW10">www.birmingham.ac.uk/HW10</a>
Chemistry BSc	F100	3	AAB-ABB	6, 6, 5-6, 5, 5	■			A level Chemistry required. Offer will depend on subject combination, see course finder for details. Minimum Mathematics requirement GCSE grade 6/B.	<a href="http://www.birmingham.ac.uk/F100">www.birmingham.ac.uk/F100</a>
Chemistry MSci	F101	4	AAA-AAB	6, 6, 6-6, 6, 5	■			A level Chemistry required. Offer will depend on subject combination, see course finder for details. Minimum Mathematics requirement GCSE grade 6/B.	<a href="http://www.birmingham.ac.uk/F101">www.birmingham.ac.uk/F101</a>
Chemistry with a Modern Language BSc	F1R9	3	AAB-ABB	6, 6, 5-6, 5, 5	■			A level Chemistry required. Offer will depend on subject combination, see course finder for details. Minimum Mathematics requirement GCSE grade 6/B.	<a href="http://www.birmingham.ac.uk/F1R9">www.birmingham.ac.uk/F1R9</a>
Chemistry with a Modern Language MSci	F1RY	4	AAA-AAB	6, 6, 6-6, 6, 5	■			A level Chemistry required. Offer will depend on subject combination, see course finder for details. Minimum Mathematics requirement GCSE grade 6/B.	<a href="http://www.birmingham.ac.uk/F1RY">www.birmingham.ac.uk/F1RY</a>
Chemistry with Business Management BSc	FIN1	3	AAB-ABB	6, 6, 5-6, 5, 5	■			A level Chemistry required. Offer will depend on subject combination, see course finder for details. Minimum Mathematics requirement GCSE grade 6/B.	<a href="http://www.birmingham.ac.uk/FIN1">www.birmingham.ac.uk/FIN1</a>
Chemistry with Business Management MSci	FIN2	4	AAA-AAB	6, 6, 6-6, 6, 5	■			A level Chemistry required. Offer will depend on subject combination, see course finder for details. Minimum Mathematics requirement GCSE grade 6/B.	<a href="http://www.birmingham.ac.uk/FIN2">www.birmingham.ac.uk/FIN2</a>
Chemistry with Foundation Year BSc/MSci	F103	4/5			◆			Offers will depend on previous study. See course finder for details.	<a href="http://www.birmingham.ac.uk/chemistry-foundation">www.birmingham.ac.uk/chemistry-foundation</a>
Chemistry with Industrial Experience MSci	F104	4	AAA-AAB	6, 6, 6-6, 6, 5	■		✓	A level Chemistry required. Offer will depend on subject combination, see course finder for details. Minimum Mathematics requirement GCSE grade 6/B.	<a href="http://www.birmingham.ac.uk/F104">www.birmingham.ac.uk/F104</a>
Chemistry with Pharmacology BSc	F1B2	3	AAB-ABB	6, 6, 5-6, 5, 5	■			A level Chemistry required. Offer will depend on subject combination, see course finder for details. Minimum Mathematics requirement GCSE grade 6/B. Biology minimum AS level grade B.	<a href="http://www.birmingham.ac.uk/F1B2">www.birmingham.ac.uk/F1B2</a>
Chemistry with Pharmacology MSci	F1B6	4	AAA-AAB	6, 6, 6-6, 6, 5	■			A level Chemistry required. Offer will depend on subject combination, see course finder for details. Minimum Mathematics requirement GCSE grade 6/B. Biology minimum AS level grade B.	<a href="http://www.birmingham.ac.uk/F1B6">www.birmingham.ac.uk/F1B6</a>



Chemistry with Study Abroad MSci	F106	4	AAA-AAB	6, 6, 6-6, 6, 5	■	✓	A level Chemistry required. Offer will depend on subject combination, see course finder for details. Minimum Mathematics requirement GCSE grade 6/B. GCSE grade A in relevant language if study abroad at a non-English-speaking university.	www.birmingham.ac.uk/F106
Civil and Railway Engineering BEng	5ZH7	3	AAB	6, 6, 5	●	✓	A level Mathematics	www.birmingham.ac.uk/5ZH7
Civil and Railway Engineering MEng	5B1H	4	AAA	6, 6, 6	■	✓	A level Mathematics	www.birmingham.ac.uk/5B1H
Civil Engineering (Engineering Foundation Year) BEng	HFJ0	4/5	AAB-BBB	6, 6, 5-5, 5, 5	◆		Offers will depend on previous study, see course finder for details. Applicants taking A level Mathematics are not considered. GCSE Mathematics minimum grade 6/B.	www.birmingham.ac.uk/engineering-fy
Civil Engineering BEng	H200	3	AAB	6, 6, 5	●	✓	A level Mathematics	www.birmingham.ac.uk/H200
Civil Engineering MEng	H201	4	AAA	6, 6, 6	■	✓	A level Mathematics	www.birmingham.ac.uk/H201
Civil Engineering with Industrial Experience MEng	H202	4	AAA	6, 6, 6	■	✓	A level Mathematics	www.birmingham.ac.uk/H202
Civil Engineering with International Study MEng	H203	4	AAA	6, 6, 6	■	✓	A level Mathematics	www.birmingham.ac.uk/H203
Classical Literature and Civilisation BA	Q820	3	ABB	6, 5, 5	●	✓		www.birmingham.ac.uk/Q820
Classics BA	Q800	3	ABB	6, 5, 5	●	✓		www.birmingham.ac.uk/Q800
Computer Science (Physical Sciences Foundation Year) BSc	FGI0	4/5	AAB-BBB	6, 6, 5-5, 5, 5	◆		Offers will depend on previous study, see course finder for details. Applicants taking A level Mathematics are not considered. GCSE Mathematics minimum grade 6/B.	www.birmingham.ac.uk/physical-sciences-fy
Computer Science BSc	G400	3	AAA	6, 6, 6	■		A level Mathematics grade A required	www.birmingham.ac.uk/G400
Computer Science MSci	I101	4	A*AA	7, 6, 6	■		A level Mathematics grade A required	www.birmingham.ac.uk/I101
Computer Science with a Year in Industry BSc	G401	4	AAA	6, 6, 6	■	✓	A level Mathematics grade A required	www.birmingham.ac.uk/G401
Computer Science with a Year in Industry MSci	I103	5	A*AA	7, 6, 6	■	✓	A level Mathematics grade A required	www.birmingham.ac.uk/I103
Computer Science with Digital Technology Partnership (PwC) BSc	G402	4	AAA	6, 6, 6	■	✓	A level Mathematics grade A required	www.birmingham.ac.uk/G402
Computer Science with Digital Technology Partnership (Vodafone) BSc	G403	4	AAA	6, 6, 6	■	✓	A level Mathematics grade A required	www.birmingham.ac.uk/G403
Computer Science with Study Abroad BSc	I10A	4	AAA	6, 6, 6	■	✓	A level Mathematics grade A required	www.birmingham.ac.uk/I10A
Computer Science with Study Abroad MSci	I102	5	A*AA	7, 6, 6	■	✓	A level Mathematics grade A required	www.birmingham.ac.uk/I102
Computer Science/Software Engineering MEng	GG46	4	A*AA	7, 6, 6	■		A level Mathematics grade A required	www.birmingham.ac.uk/GG46
Computer Science/Software Engineering with a Year in Industry MEng	GG6L	5	A*AA	7, 6, 6	■	✓	A level Mathematics grade A required	www.birmingham.ac.uk/GG6L
Criminology BA	M901	3	ABB	6, 5, 5	■			www.birmingham.ac.uk/M901

● BTEC Extended Diploma considered (in relevant subject)

■ BTEC only considered when combined with other qualifications

◆ BTEC considered on a case-by-case basis

✗ Not accepted

° See course finder for details of subjects considered to be a science

Footnote: IB scores are for Higher Level subjects unless otherwise stated and we require 32 points overall in addition

In relation to GCSE reforms we can confirm our position in terms of equivalencies: A\*=8, A=7, B=6, C=4. For more details, visit [www.birmingham.ac.uk/newgcse](http://www.birmingham.ac.uk/newgcse)

# COURSE DIRECTORY CONTINUED

Course	UCAS Code	Course length	Typical entry requirements			Study Abroad	Year in Industry	Additional information	Course finder link
			A level	IB Higher Level	BTEC				
Criminology with Year Abroad BA	M902	4	ABB	6, 5, 5	■	✓			<a href="http://www.birmingham.ac.uk/M902">www.birmingham.ac.uk/M902</a>
Dental Hygiene and Therapy BSc	B750	3	ABB	6, 5, 5	✗			A level Biology at grade B or above. Minimum of six GCSEs at grade 4/C to include English, Mathematics and a Biological subject/double award science.	<a href="http://www.birmingham.ac.uk/B750">www.birmingham.ac.uk/B750</a>
Dental Surgery BSc	A200	5	AAA	6, 6, 6	✗			A levels must include Chemistry and Biology. GCSE 8/A* in Biology and Chemistry and 7/A in Mathematics and English Language or Literature. If A levels are already achieved the GCSE requirements will be relaxed. Please visit the course page for more information. You must also sit the UCAT.	<a href="http://www.birmingham.ac.uk/A200">www.birmingham.ac.uk/A200</a>
Drama and Theatre Arts BA	W440	3	AAB-ABB	6, 6, 5-6, 5, 5	●	✓		Satisfactory performance at an audition or, if not resident in the UK, on a visual recording. Please see website for further details.	<a href="http://www.birmingham.ac.uk/W440">www.birmingham.ac.uk/W440</a>
Economics and Political Science BSc	LL12	3	AAB	6, 6, 5	◆			GCSE Mathematics at grade 7/A	<a href="http://www.birmingham.ac.uk/LL12">www.birmingham.ac.uk/LL12</a>
Economics BSc	L100	3	AAA-AAB	6, 6, 6-6, 6, 5	◆			GCSE Mathematics at grade 7/A	<a href="http://www.birmingham.ac.uk/L100">www.birmingham.ac.uk/L100</a>
Economics with German BSc	L1R2	4	AAA-AAB	6, 6, 6-6, 6, 5	■	✓		A level German grade A. GCSE Mathematics grade 7/A.	<a href="http://www.birmingham.ac.uk/L1R2">www.birmingham.ac.uk/L1R2</a>
Economics with Spanish BSc	L1R4	4	AAA-AAB	6, 6, 6-6, 6, 5	■	✓		GCSE Mathematics at grade 7/A and A level Spanish at grade A	<a href="http://www.birmingham.ac.uk/L1R4">www.birmingham.ac.uk/L1R4</a>
Education and Sociology BA	XL33	3	ABB	6, 5, 5	●				<a href="http://www.birmingham.ac.uk/XL33">www.birmingham.ac.uk/XL33</a>
Education BA	LX33	3	ABB	6, 5, 5	●	✓			<a href="http://www.birmingham.ac.uk/LX33">www.birmingham.ac.uk/LX33</a>
Electrical and Railway Engineering BEng	71H9	3	AAB	6, 6, 5	●			A level Mathematics	<a href="http://www.birmingham.ac.uk/71H9">www.birmingham.ac.uk/71H9</a>
Electrical and Railway Engineering MEng	52H1	4	AAA	6, 6, 6	■			A level Mathematics	<a href="http://www.birmingham.ac.uk/52H1">www.birmingham.ac.uk/52H1</a>
Electronic and Electrical Engineering BEng	H600	3	AAB	6, 6, 5	●			A level Mathematics	<a href="http://www.birmingham.ac.uk/H600">www.birmingham.ac.uk/H600</a>
Electronic and Electrical Engineering MEng	H605	4	AAA	6, 6, 6	■			A level Mathematics	<a href="http://www.birmingham.ac.uk/H605">www.birmingham.ac.uk/H605</a>
Electronic and Electrical Engineering with Industrial Year BEng	H606	3	AAB	6, 6, 5	●		✓	A level Mathematics	<a href="http://www.birmingham.ac.uk/H606">www.birmingham.ac.uk/H606</a>
Electronic and Electrical Engineering with Industrial Year MEng	H607	4	AAA	6, 6, 6	■		✓	A level Mathematics	<a href="http://www.birmingham.ac.uk/H607">www.birmingham.ac.uk/H607</a>
Electronic, Electrical and Systems Engineering (Engineering Foundation Year) BEng	HFJ0	4/5	AAB-BBB	6, 6, 5-5, 5, 5	◆			Offers will depend on previous study, see course finder for details. Applicants taking A level Mathematics are not considered. GCSE Mathematics minimum grade 6/B.	<a href="http://www.birmingham.ac.uk/engineering-fy">www.birmingham.ac.uk/engineering-fy</a>
Engineering BEng	H236	3	AAB	6, 6, 5	●			A level Mathematics	<a href="http://www.birmingham.ac.uk/H236">www.birmingham.ac.uk/H236</a>
Engineering MEng	H632	4	AAA	6, 6, 6	■			A level Mathematics	<a href="http://www.birmingham.ac.uk/H632">www.birmingham.ac.uk/H632</a>
English BA	Q300	3	AAB	6, 6, 5	■	✓		A level English Literature grade A (English Language and Literature A level also accepted)	<a href="http://www.birmingham.ac.uk/Q300">www.birmingham.ac.uk/Q300</a>



English and Creative Writing BA	Q3W8	3	AAB	6, 6, 5	■	✓	A level English Literature (English Language and Literature A level also accepted)	www.birmingham.ac.uk/Q3W8
English and Film BA	QW36	3	AAB	6, 6, 5	■	✓	A level English Literature (English Language and Literature A level also accepted)	www.birmingham.ac.uk/QW36
English Language BA	Q310	3	AAB-ABB	6, 6, 5-6, 5, 5	■	✓	Applicants applying with English Language, English Literature, English Language and Literature, or a Modern Foreign Language are eligible for an offer of ABB. Applicants without these A level subjects are welcome to apply and will be considered for an offer of AAB.	www.birmingham.ac.uk/Q310
English Language and Literature BA	Q30A	3	AAB	6, 6, 5	■	✓	A level in English Literature or English Language and Literature grade A	www.birmingham.ac.uk/Q30A
Environmental Science BSc	F900	3	ABB	6, 5, 5	●		At least one science° A level subject	www.birmingham.ac.uk/F900
Environmental Science MSci	F750	4	AAB	6, 6, 5	■		At least one science° A level subject	www.birmingham.ac.uk/F750
Environmental Science with a Professional Placement Abroad (Australasia) BSc	F850	4	AAB	6, 6, 5	■	✓	At least one science° A level subject	www.birmingham.ac.uk/F850
Environmental Science with Year Abroad BSc	F751	4	ABB	6, 5, 5	■	✓	At least one science° A level subject	www.birmingham.ac.uk/F751
Geography and Urban and Regional Planning BSc	LK74	3	ABB	6, 5, 5	■			www.birmingham.ac.uk/LK74
Geography BA	L700	3	AAB	6, 6, 5	◆			www.birmingham.ac.uk/L700
Geography BSc	F800	3	AAB	6, 6, 5	◆			www.birmingham.ac.uk/F800
Geography MSci	F80A	4	AAA	6, 6, 6	✕			www.birmingham.ac.uk/F80A
Geography with Year Abroad BA	L701	4	AAB	6, 6, 5	◆	✓		www.birmingham.ac.uk/L701
Geography with Year Abroad BSc	F801	4	AAB	6, 6, 5	◆	✓		www.birmingham.ac.uk/F801
Geography with an International Year MSci	L70A	4	AAA	6, 6, 6	✕	✓		www.birmingham.ac.uk/L70A
Geology and Physical Geography BSc	FF68	3	ABB	6, 5, 5	◆		At least one science° A level subject	www.birmingham.ac.uk/FF68
Geology and Physical Geography MSci	9F78	4	AAB	6, 6, 5	◆		At least one science° A level subject	www.birmingham.ac.uk/9F78
Geology and Physical Geography with an International Year MSci	FF69	4	AAA	6, 6, 6	◆	✓	At least one science° A level subject	www.birmingham.ac.uk/FF69
Geology BSc	F500	3	ABB	6, 5, 5	◆		At least one science° A level subject	www.birmingham.ac.uk/F500
Geology MSci	7F83	4	AAB	6, 6, 5	◆		At least one science° A level subject	www.birmingham.ac.uk/7F83
Geology with an International Year MSci	F601	4	AAA	6, 6, 6	◆	✓	At least one science° A level subject	www.birmingham.ac.uk/F601
History BA	V100	3	AAB	6, 6, 5	■	✓	A level History, Medieval History or Ancient History at grade A	www.birmingham.ac.uk/V100
History and Political Science BA	LV21	3	AAB	6, 6, 5	■		A level History, Medieval History or Ancient History at grade A	www.birmingham.ac.uk/LV21

● BTEC Extended Diploma considered (in relevant subject)

■ BTEC only considered when combined with other qualifications

◆ BTEC considered on a case-by-case basis

✕ Not accepted

° See course finder for details of subjects considered to be a science

Footnote: IB scores are for Higher Level subjects unless otherwise stated and we require 32 points overall in addition

In relation to GCSE reforms we can confirm our position in terms of equivalencies: A\* = 8, A = 7, B = 6, C = 4. For more details, visit [www.birmingham.ac.uk/newgcse](http://www.birmingham.ac.uk/newgcse)

# COURSE DIRECTORY CONTINUED

Course	UCAS Code	Course length	Typical entry requirements			Study Abroad	Year in Industry	Additional information	Course finder link
			A level	IB Higher Level	BTEC				
History of Art BA	V350	3	ABB	6, 5, 5	●	✓			<a href="http://www.birmingham.ac.uk/V350">www.birmingham.ac.uk/V350</a>
Human Biology BSc	C103	3	AAB	6, 6, 5	■			A level Biology/Human Biology and a second science*. Minimum of five GCSEs to include Mathematics, English and double award science at grade 4/C. For applicants without AS (minimum grade C) or A2 Chemistry, grade 6/B GCSE Chemistry or double award science is required.	<a href="http://www.birmingham.ac.uk/C103">www.birmingham.ac.uk/C103</a>
Human Biology MSci	C106	4	AAA	6, 6, 6	■			A level Biology/Human Biology and a second science*. Minimum of five GCSEs to include Mathematics, English and double award science at grade 4/C. For applicants without AS (minimum grade C) or A2 Chemistry, grade 6/B GCSE Chemistry or double award science is required.	<a href="http://www.birmingham.ac.uk/C106">www.birmingham.ac.uk/C106</a>
Human Biology with an International Year BSc	C301	4	AAA	6, 6, 6	■	✓		A level Biology/Human Biology and a second science*. Minimum of five GCSEs to include Mathematics, English and double award science at grade 4/C. For applicants without AS (minimum grade C) or A2 Chemistry, grade 6/B GCSE Chemistry or double award science is required.	<a href="http://www.birmingham.ac.uk/C301">www.birmingham.ac.uk/C301</a>
Human Biology with Professional Placement MSci	C104	4	AAA	6, 6, 6	■		✓	A level Biology/Human Biology and a second science*. Minimum of five GCSEs to include Mathematics, English and double award science at grade 4/C. For applicants without AS (minimum grade C) or A2 Chemistry, grade 6/B GCSE Chemistry or double award science is required.	<a href="http://www.birmingham.ac.uk/C104">www.birmingham.ac.uk/C104</a>
Human Neuroscience BSc	B140	3	AAA	6, 6, 6	✗			A level Biology/Human Biology	<a href="http://www.birmingham.ac.uk/B140">www.birmingham.ac.uk/B140</a>
International Business BSc	N120	4	AAB	6, 6, 5	●	✓		GCSE Mathematics and English at grade 6/B	<a href="http://www.birmingham.ac.uk/N120">www.birmingham.ac.uk/N120</a>
International Business with Communications BSc	NP19	4	AAB	6, 6, 5	●	✓		GCSE Mathematics and English at grade 6/B	<a href="http://www.birmingham.ac.uk/NP19">www.birmingham.ac.uk/NP19</a>
International Business with Language BSc	N1R9	4	AAB	6, 6, 5	■	✓		A level in chosen language for Higher routes, grade B in GCSE foreign language for Beginners route. GCSE Mathematics and English at grade 6/B.	<a href="http://www.birmingham.ac.uk/N1R9">www.birmingham.ac.uk/N1R9</a>
International Law and Globalisation LLB	M240	3	AAA	6, 6, 6	●	✓			<a href="http://www.birmingham.ac.uk/M240">www.birmingham.ac.uk/M240</a>
International Relations BA	L250	3	AAB	6, 6, 5	●				<a href="http://www.birmingham.ac.uk/L250">www.birmingham.ac.uk/L250</a>
International Relations with Economics BA	LL21	3	AAB	6, 6, 5	●			GCSE Mathematics grade 7/A	<a href="http://www.birmingham.ac.uk/LL21">www.birmingham.ac.uk/LL21</a>
International Relations with Economics with Year Abroad BA	LL2B	4	AAB	6, 6, 5	●	✓		GCSE Mathematics grade 7/A	<a href="http://www.birmingham.ac.uk/LL2B">www.birmingham.ac.uk/LL2B</a>
International Relations with French BA	L2R1	4	AAB	6, 6, 5	■	✓		A level in chosen language. A level grade B in French.	<a href="http://www.birmingham.ac.uk/L2R1">www.birmingham.ac.uk/L2R1</a>
International Relations with German BA	L2R2	4	AAB	6, 6, 5	■	✓		A level in chosen language. A level grade B in German.	<a href="http://www.birmingham.ac.uk/L2R2">www.birmingham.ac.uk/L2R2</a>
International Relations with Spanish BA	L2R4	4	AAB	6, 6, 5	■	✓		A level in chosen language. A level grade B in Spanish.	<a href="http://www.birmingham.ac.uk/L2R4">www.birmingham.ac.uk/L2R4</a>
International Relations with Year Abroad BA	L25A	4	AAB	6, 6, 5	●	✓			<a href="http://www.birmingham.ac.uk/L25A">www.birmingham.ac.uk/L25A</a>
Law for Graduates LLB	M990	2			✗			Upper-second-class Honours degree or equivalent	<a href="http://www.birmingham.ac.uk/M990">www.birmingham.ac.uk/M990</a>



Law LLB	MT00	3	AAA	6, 6, 6	●	✓			www.birmingham.ac.uk/M100
Law with Business Studies LLB	MTN1	3	AAA	6, 6, 6	●	✓		GCSE Mathematics at grade 6/B if not offered at A or AS level	www.birmingham.ac.uk/M1N1
Law with Criminology LLB	M2L6	3	AAA	6, 6, 6	●	✓			www.birmingham.ac.uk/M2L6
Law with French Law LLB	MR11	4	AAA	6, 6, 6	■	✓		A level French grade A	www.birmingham.ac.uk/MR11
Law with German Law LLB	MR12	4	AAA	6, 6, 6	■	✓		A level German grade A	www.birmingham.ac.uk/MR12
Liberal Arts and Natural Sciences BA/BSc	Y001	4	A*AA-AAA	36-35 overall	◆	✓		Satisfactory completion of admissions essay is required prior to an offer being made	www.birmingham.ac.uk/Y001
Materials Science and Engineering MEng	F2H1	4	AAA	6, 6, 6	■			A level Mathematics and one of Physics, Chemistry or Design and Technology	www.birmingham.ac.uk/F2H1
Materials Science and Engineering with Industrial Experience MEng	J200	4	AAA	6, 6, 6	■		✓	A level Mathematics and one of Physics, Chemistry or Design and Technology	www.birmingham.ac.uk/J200
Materials Science and Engineering BEng	J5F2	3	AAB	6, 6, 5	■			A level Mathematics and one of Physics, Chemistry or Design and Technology	www.birmingham.ac.uk/J5F2
Mathematical Economics and Statistics BSc	LG13	3	AAA	6, 6, 6	■			A level Mathematics grade A	www.birmingham.ac.uk/LG13
Mathematics (Physical Sciences Foundation Year) BSc	FG10	4/5	AAB-BBB	6, 6, 5-5, 5	◆			Offers will depend on previous study, see course finder for details. Applicants taking A level Mathematics are not considered. GCSE Mathematics minimum grade 6/B.	www.birmingham.ac.uk/physical-sciences-fy
Mathematics and Computer Science BSc	GG14	3	AAA	6, 6, 6	■			A level Mathematics or Further Mathematics	www.birmingham.ac.uk/GG14
Mathematics and Computer Science MSci	GI11	4	A*AA	7, 6, 6	■			A level Mathematics or Further Mathematics	www.birmingham.ac.uk/GI11
Mathematics and Computer Science with Industrial Year BSc	GGD4	3+1	AAA	6,6,6	■		✓	A level Mathematics or Further Mathematics	www.birmingham.ac.uk/GGD4
Mathematics and Computer Science with Industrial Year MSci	GG41	4+1	A*AA	7,6,6	■		✓	A level Mathematics or Further Mathematics	www.birmingham.ac.uk/GG41
Mathematics BSc	G100	3	AAA	6, 6, 6	■			A level Mathematics or Further Mathematics	www.birmingham.ac.uk/G100
Mathematics MSci	G103	4	A*AA	7, 6, 6	■			A level Mathematics or Further Mathematics	www.birmingham.ac.uk/G103
Mathematics with Business Management BSc	G1N2	3	AAA	6, 6, 6	■			A level Mathematics or Further Mathematics	www.birmingham.ac.uk/G1N2
Mathematics with Business Management MSci	G1NF	4	A*AA	7, 6, 6	■			A level Mathematics or Further Mathematics	www.birmingham.ac.uk/G1NF
Mathematics with Study in Continental Europe BSc	G141	4	AAA	6, 6, 6	■	✓		A level Mathematics. GCSE grade A or A level grade C in relevant language.	www.birmingham.ac.uk/G141
Mathematics with an International Year BSc	G104	4	AAA	6, 6, 6	■	✓		A level Mathematics or Further Mathematics	www.birmingham.ac.uk/G104
Mathematics with a Year in Industry BSc	G102	3+1	AAA	6, 6, 6	■			A level Mathematics or Further Mathematics	www.birmingham.ac.uk/G102
Mechanical and Materials Engineering BEng	HJ35	3	AAB	6, 6, 5	■			A level Mathematics and one of Physics, Chemistry or Design Technology	www.birmingham.ac.uk/HJ35
Mechanical and Materials Engineering MEng	HJ53	4	AAA	6, 6, 6	■			A level Mathematics and one of Physics, Chemistry or Design Technology	www.birmingham.ac.uk/HJ53

● BTEC Extended Diploma considered (in relevant subject)

■ BTEC only considered when combined with other qualifications

◆ BTEC considered on a case-by-case basis

✗ Not accepted

° See course finder for details of subjects considered to be a science

Footnote: IB scores are for Higher Level subjects unless otherwise stated and we require 32 points overall in addition

In relation to GCSE reforms we can confirm our position in terms of equivalencies: A\*=8, A=7, B=6, C=4. For more details, visit [www.birmingham.ac.uk/newgcse](http://www.birmingham.ac.uk/newgcse)

# COURSE DIRECTORY CONTINUED

Course	UCAS Code	Course length	Typical entry requirements			Study Abroad	Year in Industry	Additional information	Course finder link
			A level	IB Higher Level	BTEC				
Mechanical Engineering (Automotive) BEng	H302	3	AAB	6, 6, 5	●			A level Mathematics	<a href="http://www.birmingham.ac.uk/H302">www.birmingham.ac.uk/H302</a>
Mechanical Engineering (Automotive) MEng	H330	4	AAA	6, 6, 6	■			A level Mathematics	<a href="http://www.birmingham.ac.uk/H330">www.birmingham.ac.uk/H330</a>
Mechanical Engineering (Engineering Foundation Year) BEng	HFJ0	4/5	AAB-BBB	6, 6, 5-5, 5, 5	◆			Offers will depend on previous study, see course finder for details. Applicants taking A level Mathematics are not considered. GCSE Mathematics minimum grade 6/B.	<a href="http://www.birmingham.ac.uk/engineering-fy">www.birmingham.ac.uk/engineering-fy</a>
Mechanical Engineering BEng	H300	3	AAB	6, 6, 5	●			A level Mathematics	<a href="http://www.birmingham.ac.uk/H300">www.birmingham.ac.uk/H300</a>
Mechanical Engineering MEng	H301	4	AAA	6, 6, 6	■			A level Mathematics	<a href="http://www.birmingham.ac.uk/H301">www.birmingham.ac.uk/H301</a>
Mechanical Engineering with Industrial Year MEng	H303	5	AAA	6, 6, 6	■		✓	A level Mathematics	<a href="http://www.birmingham.ac.uk/H303">www.birmingham.ac.uk/H303</a>
Mechatronic and Robotic Engineering BEng	H6H3	3	AAB	6, 6, 5	●			A level Mathematics	<a href="http://www.birmingham.ac.uk/H6H3">www.birmingham.ac.uk/H6H3</a>
Mechatronic and Robotic Engineering MEng	H6H3	4	AAA	6, 6, 6	■			A level Mathematics	<a href="http://www.birmingham.ac.uk/H6H3">www.birmingham.ac.uk/H6H3</a>
Medical Biochemistry BSc	C720	3	AAB	6, 6, 5	■			A level Chemistry and a second science*. Minimum of five GCSEs to include English, Mathematics and double award science at grade 4/C.	<a href="http://www.birmingham.ac.uk/C720">www.birmingham.ac.uk/C720</a>
Medicine and Surgery MBChB	A100	5	AAA	6, 6, 6	✕			A level Biology and Chemistry grade A. GCSEs must include English (Language and Literature), Mathematics, Biology and Chemistry (or double award science) at grade 6/B minimum. UCAT required. We calculate an application score based on GCSE and UCAT results, those with higher scores receive preference though we also take contextual information into account. For detailed guidance, please see course finder.	<a href="http://www.birmingham.ac.uk/A100">www.birmingham.ac.uk/A100</a>
Medicine and Surgery MBChB Graduate Entry course	A101	4	Life science degree		✕			Minimum of a high 2:1 life science degree and ABB at A level including Chemistry. For a full list of academic and non-academic requirements please see course finder.	<a href="http://www.birmingham.ac.uk/A101">www.birmingham.ac.uk/A101</a>
Metallurgy and Materials (Engineering Foundation Year) BEng	HFJ0	4/5	AAB-BBB	6, 6, 5-5, 5, 5	◆			Offers will depend on previous study, see course finder for details. Applicants taking A level Mathematics are not considered. GCSE Mathematics minimum grade 6/B.	<a href="http://www.birmingham.ac.uk/engineering-fy">www.birmingham.ac.uk/engineering-fy</a>
Metallurgy BEng	JJ25	3	AAB	6, 6, 5	■			A level Mathematics and one of Physics, Chemistry or Design and Technology	<a href="http://www.birmingham.ac.uk/JJ25">www.birmingham.ac.uk/JJ25</a>
Modern Languages BA	R901	4	ABB	6, 5, 5	■	✓		A level or equivalent in each modern language that you plan to take at Advanced level	<a href="http://www.birmingham.ac.uk/R901">www.birmingham.ac.uk/R901</a>
Modern Languages BA (University of Birmingham with The Open University pathway)	DIRECT	5				✓		GCSE English and Maths at grade 4/C or above, or equivalent	<a href="http://www.birmingham.ac.uk/milopenuniversity">www.birmingham.ac.uk/milopenuniversity</a>
Modern Languages with Business Management BA	R9N1	4	AAB	6, 6, 5	■	✓		A level or equivalent in each modern language that you plan to take at Advanced level	<a href="http://www.birmingham.ac.uk/R9N1">www.birmingham.ac.uk/R9N1</a>
Money, Banking and Finance BSc	N300	3	AAA	6, 6, 6	◆			GCSE Mathematics at grade 7/A	<a href="http://www.birmingham.ac.uk/N300">www.birmingham.ac.uk/N300</a>

Music BMus	W302	3	AAB	6, 6, 5	■	✓	A level Music grade A. BTEC applicants also require A level Music grade A. ABRSM grade 7-8 theory is accepted as an alternative to A level Music, provided three A levels have been taken.	www.birmingham.ac.uk/W302
Nuclear Engineering MEng	H822	4	AAA	6, 6, 6	■		A level Mathematics and Physics both at grade A	www.birmingham.ac.uk/H822
Nuclear Science and Materials BSc	H821	3	AAB	6, 6, 5	■		A level Mathematics and Physics both at grade A	www.birmingham.ac.uk/H821
Nursing BNurs (Child, Adult, Mental Health, Child/Mental Health, Adult/Child and Adult/Mental Health options will all be available for this course, subject to approval)	B700	3	BBB	5, 5, 5	●		A minimum of five GCSEs at grade 4/C or above including English, Mathematics and a science* at grade 6/B or above. For a full list of academic and non-academic requirements, please see course finder.	www.birmingham.ac.uk/B700
Nursing MNurs (Child, Adult, Mental Health, Child/Mental Health, Adult/Child and Adult/Mental Health options will all be available for this course, subject to approval)	B701	4	ABB	6, 5, 5	●		Five GCSEs at grade 4/C or above including English, Mathematics and a Science subject at grade 6/B.	www.birmingham.ac.uk/B701
Paleontology and Geology BSc	FC69	3	ABB	6, 5, 5	◆		A level Biology	www.birmingham.ac.uk/FC69
Paleontology and Geology MSci	8C63	4	AAB	6, 6, 5	◆		A level Biology	www.birmingham.ac.uk/8C63
Paleontology and Geology with an International Year MSci	FC70	4	AAA	6, 6, 6	◆	✓	A level Biology	www.birmingham.ac.uk/FC70
Pharmacy MPharm (4-year)	B230	4	AAB	6, 6, 5	■		A level Chemistry and at least one further science from Biology, Mathematics or Physics. GCSE Mathematics at grade 6/B.	www.birmingham.ac.uk/B230
Pharmacy 5-year MPharm (integrated pre-registration format)	B231	5	AAB	6, 6, 5	■		A level Chemistry and at least one further science from Biology, Mathematics or Physics. GCSE Mathematics at grade 6/B. This programme is designed for international students. Only open for applications from students who are classed as 'overseas' for fees.	www.birmingham.ac.uk/B231
Philosophy BA	V500	3	AAB	6, 6, 5	●	✓		www.birmingham.ac.uk/V500
Philosophy, Religion and Ethics BA	W56	3	ABB	6, 5, 5	●	✓		www.birmingham.ac.uk/W56
Physics (International Study) BSc	F301	4	A*AA-AAAA	7, 6, 6	■	✓	A level Mathematics and A level Physics grades A*A (or AA as part of four A level offer). GCSE grade B in relevant language.	www.birmingham.ac.uk/F301
Physics (International Study) MSci	F303	4	A*AA	7, 6, 6	■	✓	A level Mathematics and A level Physics grades A*A. A level grade B in relevant language.	www.birmingham.ac.uk/F303
Physics and Astronomy (Physical Sciences Foundation Year) BSc	FG10	4/5	AAB-BBB	6, 6, 5-5, 5, 5	◆		Offers will depend on previous study, see course finder for details. Applicants taking A level Mathematics are not considered. GCSE Mathematics minimum grade 6/B required.	www.birmingham.ac.uk/physical-sciences-fy
Physics and Astrophysics (International Study) BSc	FF3M	4	A*AA-AAAA	7, 6, 6	■	✓	A level Mathematics and A level Physics grades A*A (or AA as part of four A level offer). GCSE grade B in relevant language.	www.birmingham.ac.uk/FF3M
Physics and Astrophysics BSc	FF35	3	A*AA-AAAA	7, 6, 6	■		A level Mathematics and Physics, grades A*A (or AA as part of four A level offer)	www.birmingham.ac.uk/FF35

● BTEC Extended Diploma considered (in relevant subject)

■ BTEC only considered when combined with other qualifications

◆ BTEC considered on a case-by-case basis

✗ Not accepted

° See course finder for details of subjects considered to be a science

Footnote: IB scores are for Higher Level subjects unless otherwise stated and we require 32 points overall in addition

In relation to GCSE reforms we can confirm our position in terms of equivalencies: A\*=8, A=7, B=6, C=4. For more details, visit [www.birmingham.ac.uk/newgcse](http://www.birmingham.ac.uk/newgcse)



# COURSE DIRECTORY CONTINUED

Course	UCAS Code	Course length	Typical entry requirements			Study Abroad	Year in Industry	Additional information	Course finder link
			A level	IB Higher Level	BTEC				
Physics and Astrophysics MSci	FFH5	4	A*AA	7, 6, 6	■			A level Mathematics and Physics, grades A*A	<a href="http://www.birmingham.ac.uk/FFH5">www.birmingham.ac.uk/FFH5</a>
Physics BSc	F300	3	A*AA-AAAA	7, 6, 6	■			A level Mathematics and Physics, grades A*A (or AA as part of four A level offer)	<a href="http://www.birmingham.ac.uk/F300">www.birmingham.ac.uk/F300</a>
Physics MSci	F302	4	A*AA	7, 6, 6	■			A level Mathematics and Physics, grades A*A	<a href="http://www.birmingham.ac.uk/F302">www.birmingham.ac.uk/F302</a>
Physics with Particle Physics and Cosmology BSc	F372	3	A*AA-AAAA	7, 6, 6	■			A level Mathematics and Physics, grades A*A (or AA as part of four A level offer)	<a href="http://www.birmingham.ac.uk/F372">www.birmingham.ac.uk/F372</a>
Physics with Particle Physics and Cosmology MSci	F373	4	A*AA	7, 6, 6	■			A level Mathematics and Physics, grades A*A	<a href="http://www.birmingham.ac.uk/F373">www.birmingham.ac.uk/F373</a>
Physiotherapy BSc	B160	3	AAB	6, 6, 5	●			A level Biology/Human Biology or PE at grade A. Minimum of seven GCSEs grade 6/B or above including Mathematics, English and Science. For details of non-academic conditions including work experience, please see course finder.	<a href="http://www.birmingham.ac.uk/B160">www.birmingham.ac.uk/B160</a>
Policy, Politics and Economics (PPE) BA	L990	3	AAB	6, 6, 5	●			GCSE Mathematics grade 6/B	<a href="http://www.birmingham.ac.uk/L990">www.birmingham.ac.uk/L990</a>
Policy, Politics and Economics (PPE) BA with Year Abroad	60L2	4	AAB	6, 6, 5	●	✓		GCSE Mathematics grade 6/B	<a href="http://www.birmingham.ac.uk/60L2">www.birmingham.ac.uk/60L2</a>
Political Economy BA	L150	3	AAB	6, 6, 5	●				<a href="http://www.birmingham.ac.uk/L150">www.birmingham.ac.uk/L150</a>
Political Economy with Year Abroad BA	L15A	4	AAB	6, 6, 5	●	✓			<a href="http://www.birmingham.ac.uk/L15A">www.birmingham.ac.uk/L15A</a>
Political Science and International Relations BA	L256	3	AAB	6, 6, 5	●				<a href="http://www.birmingham.ac.uk/L256">www.birmingham.ac.uk/L256</a>
Political Science and International Relations with Year Abroad BA	L257	4	AAB	6, 6, 5	●	✓			<a href="http://www.birmingham.ac.uk/L257">www.birmingham.ac.uk/L257</a>
Political Science and Philosophy BA	VL52	3	AAB	6, 6, 5	●				<a href="http://www.birmingham.ac.uk/VL52">www.birmingham.ac.uk/VL52</a>
Political Science and Philosophy with Year Abroad BA	LV25	4	AAB	6, 6, 5	●	✓			<a href="http://www.birmingham.ac.uk/LV25">www.birmingham.ac.uk/LV25</a>
Political Science and Social Policy BA	LL42	3	AAB	6, 6, 5	●				<a href="http://www.birmingham.ac.uk/LL42">www.birmingham.ac.uk/LL42</a>
Political Science and Social Policy with Year Abroad BA	LL24	4	AAB	6, 6, 5	●	✓			<a href="http://www.birmingham.ac.uk/LL24">www.birmingham.ac.uk/LL24</a>
Political Science and Sociology BA	LL32	3	AAB	6, 6, 5	●				<a href="http://www.birmingham.ac.uk/LL32">www.birmingham.ac.uk/LL32</a>
Political Science and Sociology with Year Abroad BA	LL23	4	AAB	6, 6, 5	●	✓			<a href="http://www.birmingham.ac.uk/LL23">www.birmingham.ac.uk/LL23</a>
Political Science BA	L200	3	AAB	6, 6, 5	●				<a href="http://www.birmingham.ac.uk/L200">www.birmingham.ac.uk/L200</a>
Political Science with Year Abroad BA	L20A	4	AAB	6, 6, 5	●	✓			<a href="http://www.birmingham.ac.uk/L20A">www.birmingham.ac.uk/L20A</a>
Politics, Religion and Philosophy BA	8L37	3	AAB	6, 6, 5	●	✓			<a href="http://www.birmingham.ac.uk/8L37">www.birmingham.ac.uk/8L37</a>
Psychology and Psychological Practice MSci	C801	4	A*AA	7, 6, 6	✗				<a href="http://www.birmingham.ac.uk/C801">www.birmingham.ac.uk/C801</a>
Psychology and Psychological Research MSci	C890	4	A*AA	7, 6, 6	✗				<a href="http://www.birmingham.ac.uk/C890">www.birmingham.ac.uk/C890</a>

Psychology BSc	C800	3	AAA	6, 6, 6	■			www.birmingham.ac.uk/C800
Psychology in Education BSc (Hons)	C8X3	3	ABB	6, 5, 5	◆		ABB including Psychology. For students wishing to pursue a career in Primary or Early Years teaching, it is essential to hold a GCSE Science at grade C.	www.birmingham.ac.uk/C8X3
Russian Studies and International Relations BA	RL72	4	AAB	6, 6, 5	●	✓		www.birmingham.ac.uk/RL72
Social Policy and Criminology BA	L673	3	ABB	6, 5, 5	●			www.birmingham.ac.uk/L673
Social Policy and Criminology Year Abroad BA	L67A	4	ABB	6, 5, 5	●	✓		www.birmingham.ac.uk/L67A
Social Policy and Sociology BA	LL43	3	BBB	5, 5, 5	●			www.birmingham.ac.uk/LL43
Social Policy and Sociology Year Abroad BA	L34A	4	BBB	5, 5, 5	●	✓		www.birmingham.ac.uk/L34A
Social Policy BA	L400	3	BBB	5, 5, 5	●			www.birmingham.ac.uk/L400
Social Policy with Year Abroad BA	L40A	4	BBB	5, 5, 5	●	✓		www.birmingham.ac.uk/L40A
Social Work BA	L501	3	ABB	6, 5, 5	●			www.birmingham.ac.uk/L501
Social Work with Year Abroad BA		4	ABB	6, 5, 5	●	✓	Not directly admissible via UCAS. Students apply at the end of their first year based on their performance.	
Sociology BA	L300	3	ABB	6, 5, 5	●			www.birmingham.ac.uk/L300
Sociology with Year Abroad BA	L30A	4	ABB	6, 5, 5	●	✓		www.birmingham.ac.uk/L30A
Sociology and Criminology BA	LM39	3	ABB	6, 5, 5	●			www.birmingham.ac.uk/LM39
Sociology and Criminology with Year Abroad BA	L39A	4	ABB	6, 5, 5	●	✓		www.birmingham.ac.uk/L39A
Sport, Exercise and Health Sciences BSc	BC17	3	AAA-ABB	6, 6, 6-6, 5, 5	●		GCSE Mathematics, English and a science at a minimum of grade 4/C. A level requirements dependent on the number of science subjects being offered – see course finder.	www.birmingham.ac.uk/BC17
Sport, Physical Education and Coaching Science BSc	C6L4	3	AAB-ABB	6, 6, 5-6, 5, 5	●		GCSE Mathematics, English and a science at a minimum of grade 4/C. A level requirements dependent on the number of preferred subjects being offered – please see course finder.	www.birmingham.ac.uk/C6L4
Theology and Religion BA	V600	3	ABB	6, 5, 5	●	✓		www.birmingham.ac.uk/V600
Theoretical Physics and Applied Mathematics BSc	F631	3	A*AA	7, 6, 6	■		A level Mathematics A*, A level Physics A	www.birmingham.ac.uk/F631
Theoretical Physics and Applied Mathematics MSci	F3DG	4	A*A*A	7, 7, 6	■		A level Mathematics A*, A level Physics A* or A level Mathematics A*, Further Mathematics A*, Physics A	www.birmingham.ac.uk/F3DG
Theoretical Physics BSc	F342	3	A*AA	7, 6, 6	■		A level Mathematics A*, A level Physics A	www.birmingham.ac.uk/F342
Theoretical Physics MSci	F343	4	A*A*A	7, 7, 6	■		A level Mathematics A*, A level Physics A* or A level Mathematics A*, Further Mathematics A*, Physics A	www.birmingham.ac.uk/F343

● BTEC Extended Diploma considered (in relevant subject)

■ BTEC only considered when combined with other qualifications

◆ BTEC considered on a case-by-case basis

✗ Not accepted

° See course finder for details of subjects considered to be a science

Footnote: IB scores are for Higher Level subjects unless otherwise stated and we require 32 points overall in addition

In relation to GCSE reforms we can confirm our position in terms of equivalencies: A\*=8, B=7, C=6. For more details, visit [www.birmingham.ac.uk/newgcse](http://www.birmingham.ac.uk/newgcse)

# JOINT HONOURS PROGRAMMES

You will need to meet the subject-specific requirements for both subjects within the degree programme to be considered for entry – please see the course finder entry for details.

Arts and Law www.birmingham.ac.uk/cal		Engineering and Physical Sciences www.birmingham.ac.uk/eps		Life and Environmental Sciences www.birmingham.ac.uk/les		Medical and Dental Sciences www.birmingham.ac.uk/mds		Social Sciences www.birmingham.ac.uk/ssss	
Course combination		UCAS code	Typical entry requirements		Course finder link				
			A level	IB Higher Level					
	Anthropology and African Studies BA	LT65	BBB	5, 5, 5	www.birmingham.ac.uk/LT65				
	Anthropology and Classical Literature and Civilisation BA	LQ68	ABB	6, 5, 5	www.birmingham.ac.uk/LQ68				
	Anthropology and History BA	LV61	ABB	6, 5, 5	www.birmingham.ac.uk/LV61				
	Anthropology and Political Science BA	LL62	ABB	6, 5, 5	www.birmingham.ac.uk/LL62				
	Archaeology and Ancient History and History BA	VV14	ABB	6, 5, 5	www.birmingham.ac.uk/VV14				
	Classical Literature and Civilisation and Philosophy BA	QV85	ABB	6, 5, 5	www.birmingham.ac.uk/QV85				
	Drama and English BA	WQ43	AAB	6, 6, 5	www.birmingham.ac.uk/WQ43				
	Economics and Political Science BSc	LL12	AAB	6, 6, 5	www.birmingham.ac.uk/LL12				
	Education and Sociology BA	XL33	ABB	6, 5, 5	www.birmingham.ac.uk/XL33				
	English and Classical Literature and Civilisation BA	QQ3V	ABB	6, 5, 5	www.birmingham.ac.uk/QQ3V				
	English and History BA	QV3C	AAA	6, 6, 6	www.birmingham.ac.uk/QV3C				
	English and History of Art BA	QV3H	ABB	6, 5, 5	www.birmingham.ac.uk/QV3H				
	English and Philosophy BA	QV3M	AAB	6, 6, 5	www.birmingham.ac.uk/QV3M				
	Geography and Urban and Regional Planning BSc	LK74	ABB	6, 5, 5	www.birmingham.ac.uk/LK74				
	History and History of Art BA	VV13	ABB	6, 5, 5	www.birmingham.ac.uk/VV13				
	History and Philosophy BA	VV15	AAB	6, 6, 5	www.birmingham.ac.uk/VV15				
	History and Political Science BA	LV21	AAA	6, 6, 6	www.birmingham.ac.uk/LV21				
	History and Theology BA	VV16	ABB	6, 5, 5	www.birmingham.ac.uk/VV16				
	Materials Science and Mechanical Engineering BEng	HJ35	AAB	6, 6, 5	www.birmingham.ac.uk/HJ35				
	Materials Science and Mechanical Engineering MEng	HJ53	AAA	6, 6, 6	www.birmingham.ac.uk/HJ53				
	Mathematics and Computer Science BSc	GG14	AAA	6, 6, 6	www.birmingham.ac.uk/GG14				
	Mathematics and Computer Science MSci	GI11	A*AA	7, 6, 6	www.birmingham.ac.uk/GI11				
	Mathematics and Computer Science with Industrial Year BSc	GG04	AAA	6, 6, 6	www.birmingham.ac.uk/GG04				



Mathematics and Computer Science with Industrial Year MSci	GG41	A*AA	7, 6, 6	<a href="http://www.birmingham.ac.uk/6641">www.birmingham.ac.uk/6641</a>
Mathematics and Music BA	GW13	AAB	6, 6, 5	<a href="http://www.birmingham.ac.uk/GW13">www.birmingham.ac.uk/GW13</a>
Mathematics and Philosophy BA	GV15	AAB	6, 6, 5	<a href="http://www.birmingham.ac.uk/GV15">www.birmingham.ac.uk/GV15</a>
Modern Languages and English BA	706Q	AAB	6, 6, 5	<a href="http://www.birmingham.ac.uk/706Q">www.birmingham.ac.uk/706Q</a>
Modern Languages and History BA	R9V1	AAB	6, 6, 5	<a href="http://www.birmingham.ac.uk/R9V1">www.birmingham.ac.uk/R9V1</a>
Modern Languages and History of Art BA	5QV1	ABB	6, 5, 5	<a href="http://www.birmingham.ac.uk/5QV1">www.birmingham.ac.uk/5QV1</a>
Modern Languages and Music BA	R752	AAB	6, 6, 5	<a href="http://www.birmingham.ac.uk/R752">www.birmingham.ac.uk/R752</a>
Modern Languages with two languages BA*	R901	AAB	6, 6, 5	<a href="http://www.birmingham.ac.uk/R901">www.birmingham.ac.uk/R901</a>
Philosophy and Sociology BA	VL53	ABB	6, 5, 5	<a href="http://www.birmingham.ac.uk/VL53">www.birmingham.ac.uk/VL53</a>
Political Science and International Relations BA	L256	AAB	6, 6, 5	<a href="http://www.birmingham.ac.uk/L256">www.birmingham.ac.uk/L256</a>
Political Science and International Relations with Year Abroad BA	L257	AAB	6, 6, 5	<a href="http://www.birmingham.ac.uk/L257">www.birmingham.ac.uk/L257</a>
Political Science and Philosophy BA	VL52	AAB	6, 6, 5	<a href="http://www.birmingham.ac.uk/VL52">www.birmingham.ac.uk/VL52</a>
Political Science and Philosophy with Year Abroad BA	LV25	AAB	6, 6, 5	<a href="http://www.birmingham.ac.uk/LV25">www.birmingham.ac.uk/LV25</a>
Political Science and Social Policy BA	LL42	AAB	6, 6, 5	<a href="http://www.birmingham.ac.uk/LL42">www.birmingham.ac.uk/LL42</a>
Political Science and Social Policy with Year Abroad BA	LL24	AAB	6, 6, 5	<a href="http://www.birmingham.ac.uk/LL24">www.birmingham.ac.uk/LL24</a>
Political Science and Sociology BA	LL32	AAB	6, 6, 5	<a href="http://www.birmingham.ac.uk/LL32">www.birmingham.ac.uk/LL32</a>
Political Science and Sociology with Year Abroad BA	LL23	AAB	6, 6, 5	<a href="http://www.birmingham.ac.uk/LL23">www.birmingham.ac.uk/LL23</a>
Russian Studies and International Relations BA	RL72	AAB	6, 6, 5	<a href="http://www.birmingham.ac.uk/RL72">www.birmingham.ac.uk/RL72</a>
Social Policy and Criminology BA	LG73	ABB	6, 5, 5	<a href="http://www.birmingham.ac.uk/LG73">www.birmingham.ac.uk/LG73</a>
Social Policy and Sociology BA	LL43	BBB	5, 5, 5	<a href="http://www.birmingham.ac.uk/LL43">www.birmingham.ac.uk/LL43</a>
Social Policy and Sociology with Year Abroad BA	L34A	BBB	5, 5, 5	<a href="http://www.birmingham.ac.uk/L34A">www.birmingham.ac.uk/L34A</a>
Social Policy and Criminology with Year Abroad BA	LG7A	ABB	6, 5, 5	<a href="http://www.birmingham.ac.uk/LG7A">www.birmingham.ac.uk/LG7A</a>
Sociology and Criminology BA	LM39	ABB	6, 5, 5	<a href="http://www.birmingham.ac.uk/LM39">www.birmingham.ac.uk/LM39</a>
Sociology and Criminology with Year Abroad BA	L39A	ABB	6, 5, 5	<a href="http://www.birmingham.ac.uk/L39A">www.birmingham.ac.uk/L39A</a>
Theoretical Physics and Applied Mathematics BSc	FE31	A*AA	7, 6, 6	<a href="http://www.birmingham.ac.uk/FE31">www.birmingham.ac.uk/FE31</a>
Theoretical Physics and Applied Mathematics MSci	F30G	A*A*A	7, 7, 6	<a href="http://www.birmingham.ac.uk/F30G">www.birmingham.ac.uk/F30G</a>

# JOINT HONOURS COMBINATIONS

	African Studies	Anthropology	Applied Mathematics	Archaeology and Ancient History	Classical Literature and Civilisation	Computer Science	Computer Science with Industrial Year	Criminology	Criminology with Year Abroad	Drama	Economics	Education	English	Geography	History	History of Art
African Studies	LT65															
Anthropology	LT65			LQ68											LV61	
Applied Mathematics																
Archaeology and Ancient History															VV14	
Classical Literature and Civilisation		LQ68										QQ3V				
Computer Science																
Computer Science with Industrial Year																
Criminology																
Criminology with Year Abroad																
Drama																
Economics																
Education																
English					QQ3V				WQ43						QV3C	QV3H
Geography																
History		LV61		VV14									QV3C		VV13	
History of Art													QV3H		VV13	
International Relations																
International Relations with Year Abroad																
Materials Science																
Mathematics					GG14 <sup>1</sup>	GGD4 <sup>2</sup>										
Mechanical Engineering																
Modern Languages													7Q6Q		R9V1	5QV1
Music																
Philosophy					QV85								QV3M		VV15	
Philosophy with Year Abroad																
Political Science		LL62								LL12					LV21	
Russian Studies																
Social Policy							L673	L67A								
Social Policy with Year Abroad																
Sociology							LM39	L39A			XL33					
Sociology with Year Abroad																
Theology															VV16	
Theoretical Physics			FG31 <sup>4</sup>													
Urban and Regional Planning														LK74		

<sup>1</sup> MSci route available (UCAS code GI11)<sup>2</sup> MSci route available (UCAS code GG41)<sup>3</sup> MEng route available (UCAS code HJ53)<sup>4</sup> MSci route available (UCAS code F3D6)





## HOW

## TO APPLY

At the University of Birmingham, we welcome applications from students of all ages, nationalities and backgrounds to study with us. Your application is considered through your personal statement, references and your predicted and obtained grades. We look to admit those who will thrive in our community as academically excellent and bold,

independent thinkers who will benefit from their degree programme.

All applications to our undergraduate programmes must be made through the Universities and Colleges Admissions Service – UCAS. Your application is made online at [www.ucas.com](http://www.ucas.com)

i

### WRITING YOUR APPLICATION

Head to your personalised web page for further guidance. We also have online resources that you might find useful, including our personal statement writing video, which is full of tips from our academics and current students to help you write a great personal statement. [www.birmingham.ac.uk/personalstatement](http://www.birmingham.ac.uk/personalstatement)

### OPEN DAYS

Make sure you visit us at one of our 2019 campus open days.

- 28 June
- 29 June
- 14 September
- 19 October

[www.birmingham.ac.uk/opendays](http://www.birmingham.ac.uk/opendays)

### 1ST UCAS DEADLINE 15 OCTOBER

Last date for receipt of applications from those applying for Medicine (A100 and A101) and Dentistry (A200) and from all applicants who include Oxford and Cambridge among their entries.



### UCAS OPEN SEPTEMBER

Opening date for receipt by UCAS of application for admission in September 2020.

#### UK students (via school or college)

All UK schools and colleges are registered with UCAS, and they manage their students' applications for them. Your school or college will guide you through the online application process and will submit the final application on your behalf.

## WHAT HAPPENS NEXT?

Once your application has been received by UCAS, it will be forwarded to the University for consideration. The University considers all applications submitted by the 15 January deadline (15 October for Medicine and Dentistry) equally, using consistent criteria.

Many applications will receive a decision within 15 working days. However, for programmes that interview as part of the selection process or that are very competitive the consideration process will take longer. Once we have made a decision, you will receive notification of this and be able to view the decision on UCAS Track. If you receive an offer we will also send you further, detailed information.

For further details on how we assess applications, please see our Code of Practice: [www.birmingham.ac.uk/admissionstudents](http://www.birmingham.ac.uk/admissionstudents)

## RESULTS DAY AND WHAT TO DO NEXT

Clearing opens in July for applicants still seeking a place.

See UCAS for details: [www.ucas.com/clearing](http://www.ucas.com/clearing)

At Birmingham, we may have selected places available for high-quality applicants.

Once we receive your results we will automatically accept you if you meet the terms of your offer. If you do not meet the terms of your offer, we will consider whether we can still offer you a place – this will depend on whether there are still places available on your programme and the grades you have achieved.

## 2ND UCAS DEADLINE 15 JANUARY

Last date for all applications from all other UK/EU students. Applications received after this date may be considered by some programmes but this is not guaranteed.

## OFFER DECISION EARLY MAY

Last date for informing UCAS of your decisions on your offers (UK/EU students). You will need to notify UCAS which universities you are accepting as your Firm and Insurance choices.

## RESULTS JULY

International Baccalaureate and BTEC results are received by UCAS and passed on to universities directly. You will also need to submit any other results you may have received. Last date for informing UCAS of your decisions on your offers (international students).



## OFFER-HOLDER VISIT DAYS OCT–APRIL

Offer-Holder Visit Days run from October to April. If you receive an offer from us, you will be invited to meet current staff and students and tour the facilities. Applicants for some programmes may be invited to attend an interview or visit the University before we can decide to make an offer.

## UCAS CLOSED 30 JUNE

Last date for receipt of applications. Applications received by UCAS after 30 June will go into Clearing.

**FOR MORE DETAILS ON HOW TO APPLY IF YOU ARE NOT APPLYING THROUGH YOUR SCHOOL OR COLLEGE, OR ARE AN EU OR INTERNATIONAL APPLICANT, PLEASE SEE OUR WEBSITE: [WWW.BIRMINGHAM.AC.UK/HOWTOAPPLY](http://WWW.BIRMINGHAM.AC.UK/HOWTOAPPLY)**

# ENTRY

# REQUIREMENTS

To be considered by Birmingham, you will need to meet the University's general entry requirements as well as the specific entry requirements of your chosen programme.

## GENERAL ENTRY REQUIREMENTS

We require a minimum of three A levels (or equivalent from other accepted qualifications) and GCSE grade C/4 in Mathematics and English. Please note that some programmes will have higher requirements than this minimum standard. See individual course listings on our website. We also consider other level 3 qualifications such as the International Baccalaureate, BTECs, the Welsh Baccalaureate, Scottish Highers and the Cambridge Pre-U. For more information, please visit [www.birmingham.ac.uk/ug-entry](http://www.birmingham.ac.uk/ug-entry)

## PROGRAMME-SPECIFIC ENTRY REQUIREMENTS

Typical offers for A level and IB, as well as any required subjects, are listed on our course pages – please always check online for the most up-to-date and detailed information.

## SPECIAL REQUIREMENTS

For some programmes in medical and health sciences or where there is contact with vulnerable adults or children a full Disclosure and Barring Service (DBS) check is required. You may also be required to sign a Code of Professional Conduct and meet Fitness to Practise requirements. Some programmes may also require certain immunisations and a health declaration.

## EU AND INTERNATIONAL QUALIFICATIONS

We accept a wide range of EU and international qualifications – for more information go to [www.birmingham.ac.uk/search](http://www.birmingham.ac.uk/search)

## ENGLISH LANGUAGE REQUIREMENTS

Applicants whose first language is not English will be required to provide evidence of their English proficiency. Please visit [www.birmingham.ac.uk/internationalentry](http://www.birmingham.ac.uk/internationalentry)

## PATHWAYS TO BIRMINGHAM

If you are eligible for, and successfully complete, one of our Year 12 and 13 Pathway programmes (which includes the A2B scheme) we will make you an alternative entry offer, normally two A level grades (or equivalent) lower.

## NEW UCAS TARIFF

UCAS introduced a new tariff system for 2017 entry and although we will use this to help assess qualifications, we do not make offers based on tariff points. Please note that in addition to tariff information, all qualifications are assessed on the basis of their suitability for your programme of study.



## EXTENDED PROJECT QUALIFICATION (EPQ)

Applicants who offer the EPQ and meet our offer criteria will be made the standard offer for their programme of choice, and an alternative offer which will be one grade lower plus a grade A in the EPQ (with the exception of our Medicine (A100) and Dentistry (A200) programmes). For example, where our standard offer is AAA, the offer would be AAA or AAB plus A in the EPQ. We believe that this recognises the importance of independent learning and the value of this qualification as preparation for higher education.

## QUALIFICATION REFORM

### A levels

We treat all A levels equally and therefore will not differentiate between reformed linear and modular A levels in terms of grades required. However, please note that where a separate pass/fail mark is awarded in the reformed Science A levels we will ask for the overall grade plus a pass in the practical for entry to our Science and Engineering degrees.

### GCSEs

Applicants who offer reformed GCSEs will be asked for the following grade equivalence: A\* = 8, A = 7, B = 6, C = 4.

### BTECs

Acceptability of BTEC qualifications, including reformed BTECs, will continue to vary from programme to programme – please check online for further information.

## KEY ADMISSIONS POLICIES

### International Baccalaureate (IB)

Our policy on the IB qualification is focused on attainment in the Higher Level subjects. Therefore offers are based on three Higher Level grades with a minimum overall mark of 32. (Note that this excludes Liberal Arts and Natural Sciences – see page 49).

### International A levels and iGCSEs

We accept all International GCSEs and A levels as equivalent qualifications to standard GCSEs and A levels.

### BTECs

Not all of our programmes will accept BTEC qualifications alone for entry. Please see the course pages and online course entries for further information. However, many programmes will be happy to accept

combinations of BTECs and A levels providing that any subject-specific requirements are met.

### Access to HE

Access to HE qualifications will be considered by some programmes. However, this is usually on a case-by-case basis – check our online course finder for more information.

### Applicants returning to education

We welcome applications from people who have been out of education for some time and who may not meet the standard programme entry requirements. We encourage such applicants to contact the relevant admissions tutor in the first instance to discuss the suitability of your qualifications and experience.

## YOUR PERSONALISED BIRMINGHAM OFFER

Your offer is individual to you based on a variety of factors. The offer we make will vary depending upon your academic profile (the qualifications and predicted grades you apply with) and personal circumstances. Upon considering your application, we may make you an alternative offer to our typical offer such as an Access to Birmingham (A2B) offer, an offer that

takes account of your Extended Project Qualification (an EPQ offer) or another form of contextual offer based on your personal circumstances and prior academic attainment.

See [www.birmingham.ac.uk/ug-entry](http://www.birmingham.ac.uk/ug-entry) for more information about your personalised offer.

# COSTS AND FINANCIAL SUPPORT

**A university degree is a sound investment in your future. We want you to have all the facts so you can manage your finances throughout your university life and beyond.**

For UK students beginning their studies in September 2020, we intend to charge the maximum approved tuition fee per year (previously £9,250 for 2019–20) for our full-time undergraduate courses subject to Office for Students approval.

Loans from the government are available for all eligible full-time UK students to cover tuition fees and assist with living expenses. The amount that you can borrow will be determined by your household income and where you choose to study.

To find out more about fees and funding at Birmingham, visit:  
[www.birmingham.ac.uk/funding](http://www.birmingham.ac.uk/funding)

i

## APPLYING FOR FINANCIAL SUPPORT

You should apply at [www.gov.uk/studentfinance](http://www.gov.uk/studentfinance), following the link for your place of residence as soon as you have applied for your course. You don't have to wait until you've received an offer of a place to study before you apply.



## THE CHAMBERLAIN AWARD

The Chamberlain Award is a means-tested bursary that is open to students from across the UK with a household income below £36,000.

If you have been financially assessed by the relevant Student Loans Company (SLC) agency and have given consent to share your financial details with the University, your entitlement to the Chamberlain Award will be calculated automatically in most cases.

For more details, visit:

[www.birmingham.ac.uk/chamberlain](http://www.birmingham.ac.uk/chamberlain)

## SCHOLARSHIPS

### MUSIC

We offer a number of Music Scholarships each year. Offering approximately 17 hours of musical tuition per year for three years (total equivalent cash value of £3,000), these scholarships are open to prospective students who are performing at a Grade 8 standard in an instrument or vocals and have an offer of a place on a full-time undergraduate programme (other than a programme offered by the Department of Music) at the University.

Find out more:

[www.birmingham.ac.uk/musicscholarships](http://www.birmingham.ac.uk/musicscholarships)

### SPORT

University of Birmingham Sport offers scholarships each year to international-level performers from any academic department and of any nationality. Scholarship support consists of facility membership, strength and conditioning work, sports science and medicine services (including physiotherapy), lifestyle workshops and help with sports-specific expenditure.

Find out more:

[www.sportandfitness.bham.ac.uk/scholarships](http://www.sportandfitness.bham.ac.uk/scholarships)

### SCHOOL SCHOLARSHIPS

Depending on the subject you have chosen to study, there may be additional scholarships available to you. The eligibility criteria can vary depending on the School, but students are usually judged on their academic performance and/or financial need, with scholarships offered in addition to the Chamberlain Award.

Find out if you are eligible for a School scholarship here:

[www.birmingham.ac.uk/ugfund](http://www.birmingham.ac.uk/ugfund)



### STUDENT SAYS:

'BIRMINGHAM OFFERS EVERYTHING YOU COULD NEED FROM A MAJOR CITY AT A FRACTION OF THE COST OF LONDON.'

**FIND OUT MORE ABOUT FUNDING YOUR STUDIES:**  
[WWW.BIRMINGHAM.AC.UK/FUNDING](http://WWW.BIRMINGHAM.AC.UK/FUNDING)



# COST OF LIVING

What does it cost to live in Birmingham? Money can often be a worry to students applying to university and while they're here – but there are lots of things you can do to keep your costs down.

## CARTER, FROM MANCHESTER



### Second-year Mechanical Engineering

On a typical night out, I tend to spend around £20. However, this certainly varies. There is such diverse nightlife in Birmingham and this comes with varying prices!

I have found the cost of living here to be very reasonable. Transport, food and accommodation are all very accessible to students. To add, I have found Birmingham to be a very student-friendly city: both socially and cost-wise. I always do my food shopping in Aldi as I prefer to cook for myself rather than go out for food. I have found it to be a lot cheaper and (mostly) healthier. I also enjoying cooking because it is a nice break from studying. But I like to try a new dish in a restaurant and then recreate it at home (for half the price!).

## RACHEL, FROM BURY



### Fourth-year Biological Sciences with a Year Abroad

One piece of advice to save money? ALDI! Aldi is my favourite place ever. The food there is so cheap and I find the quality is no different to more mainstream supermarkets. My weekly shop is maybe about £10–15 a week which is nothing in comparison to a lot of other supermarkets! Wandering into Aldi after lectures and finding yourself in the 'Mystery Aisle' is one of the great things about shopping here. I've found all sorts of bargains in there – even a mattress topper for the uncomfortable bed I had in a rented house! I cook at home more than I go out for food. Cooking in bulk and freezing food is definitely the way to do it. Coming home from a busy day of lectures and being able to grab some pre-cooked chilli out of the freezer is a life-saver for those days when you just really can't be bothered.

My housemates and I have started cooking as a group. We each take it in turns to cook one night and then sit down and eat together with a Netflix show. It's a brilliant way of making sure you get a break from working, spend time together and it works out cheaper than having to cook for yourself at the end of the night! We just split the bills at the end of the week – it's not all about pasta and beans on toast!

**STUDENT SAYS:**  
'I COOK MORE BECAUSE  
IT'S CHEAPER BUT  
WE GO OUT FOR  
MEALS FOR SPECIAL  
OCCASIONS  
LIKE BIRTHDAYS.'



## STUDENT SAYS:

'I SPEND ABOUT £9, INCLUDING A TICKET AND TAXI...THEN EXTRAS ON A DRINK IN THE CLUB AND CHICKEN AFTERWARDS!'



### RUMALI, FROM POOLE

#### Second-year Political Science and International Relations

Including taxis to town and back, drinks and of course food at the end of the night, a night out costs me about a maximum of £20.

Birmingham is really affordable. I have never thought to myself that something is overpriced. I think this is because it is very much a student city with so many different universities and therefore, students. For most of my shopping, I go to either Tesco or Aldi. But I am very partial to take-out and especially living in Selly Oak this year, where there are so many different dining options in such close proximity, it's quite hard to resist.

## WHAT DO YOU LIKE TO COOK?

'Spaghetti bolognese and various other pasta dishes, chilli, curries, fajitas, stir-fries... the list goes on!'

**Sarah, fourth-year Psychology and Psychological Practice, from London**

'I can do a fantastic bacon lasagne, stuffed chicken breast, toad in the hole, and cheese and onion pasties. For dessert, I think I'm quite adept at making passion fruit and banana soufflés!'

**Sam, second-year Biomedical Science, from Birmingham**

'I mostly make classic student staples; bolognese, chilli, pasta bake, fajitas, sausage and mash. If I can't be bothered or don't have time though, I'll just make something that goes in the oven like pizza.'

**Molly, third-year English Literature, from Leicester**

'I'm vegetarian so my usual meals include stir-fry, lentil bolognese, vegetable quesadillas and vegetable jambalaya. Usually, I will have leftovers that will last me a few days which is a great way to save time and money!'

**Megan, fourth-year English Literature, from Nottingham**

'Chilli... endless chilli, it's super versatile. You can make it into pasta dishes, nachos, burritos... the list goes on!'

**Josh, third-year Chemical Engineering, from Manchester**

'Me and my housemates often cook bigger dishes like fajitas together, to spread the cost and have a catch-up over some good food.'

**Harvey, second-year Modern Languages, from Bridgend**

**FIND OUT MORE ABOUT GETTING A PART-TIME  
JOB THROUGH THE UNIVERSITY HERE:**

**[WWW.WORKLINK.BHAM.AC.UK](http://WWW.WORKLINK.BHAM.AC.UK)**

# THE BIRMINGHAM OFFER CALCULATOR

## SEE IF YOU'RE LIKELY TO RECEIVE AN OFFER

Choosing a university is a really exciting and important decision, but it can also be a bit scary. Wouldn't it be great to find out if you could get a place at university, immediately and before you apply?

Unique to Birmingham, we have developed a tool that will do exactly that. Our Offer Calculator will tell you immediately whether you are likely to receive an offer from us, and what that offer might be. All you need to do is put in your predicted and achieved grades to find out.

- Find out immediately if you are likely to receive an offer from Birmingham
- Discover similar subjects you might not have considered – or even know about
- Applicable if you're studying for A levels, BTEC or the International Baccalaureate

**WHY WAIT UNTIL YOU APPLY? FIND OUT NOW IF YOU ARE LIKELY TO RECEIVE AN OFFER TO STUDY AT BIRMINGHAM:**

**[WWW.BIRMINGHAM.AC.UK/OFFERCALCULATOR](http://WWW.BIRMINGHAM.AC.UK/OFFERCALCULATOR)**



**USE OUR OFFER  
CALCULATOR AND  
REGISTER FOR AN  
OPEN DAY**



# MAIN LIBRARY



## ESSENTIAL INFORMATION

Before you apply, please visit our website to view essential information for all applicants: [www.birmingham.ac.uk/applicantinformation](http://www.birmingham.ac.uk/applicantinformation).

If the University makes you an offer, and you decide to accept it, a contract will be formed between you and the University. The website includes important terms, conditions and requirements that will apply to that contract, and on which the University will rely in its future relationship with you. It is essential that you read them carefully.

Information set out in the prospectus and on the University website is accurate at the date of publication.



UNIVERSITY OF  
BIRMINGHAM

Edgbaston, Birmingham,  
B15 2TT, United Kingdom  
[www.birmingham.ac.uk](http://www.birmingham.ac.uk)



WORLD  
LAND  
TRUST™

[www.carbonbalancedpaper.com](http://www.carbonbalancedpaper.com)  
CBP000320



When you have finished with  
this prospectus please recycle it



MIX  
Paper from  
responsible sources  
FSC® C017574