



COLLEGE
CONTACT.COM

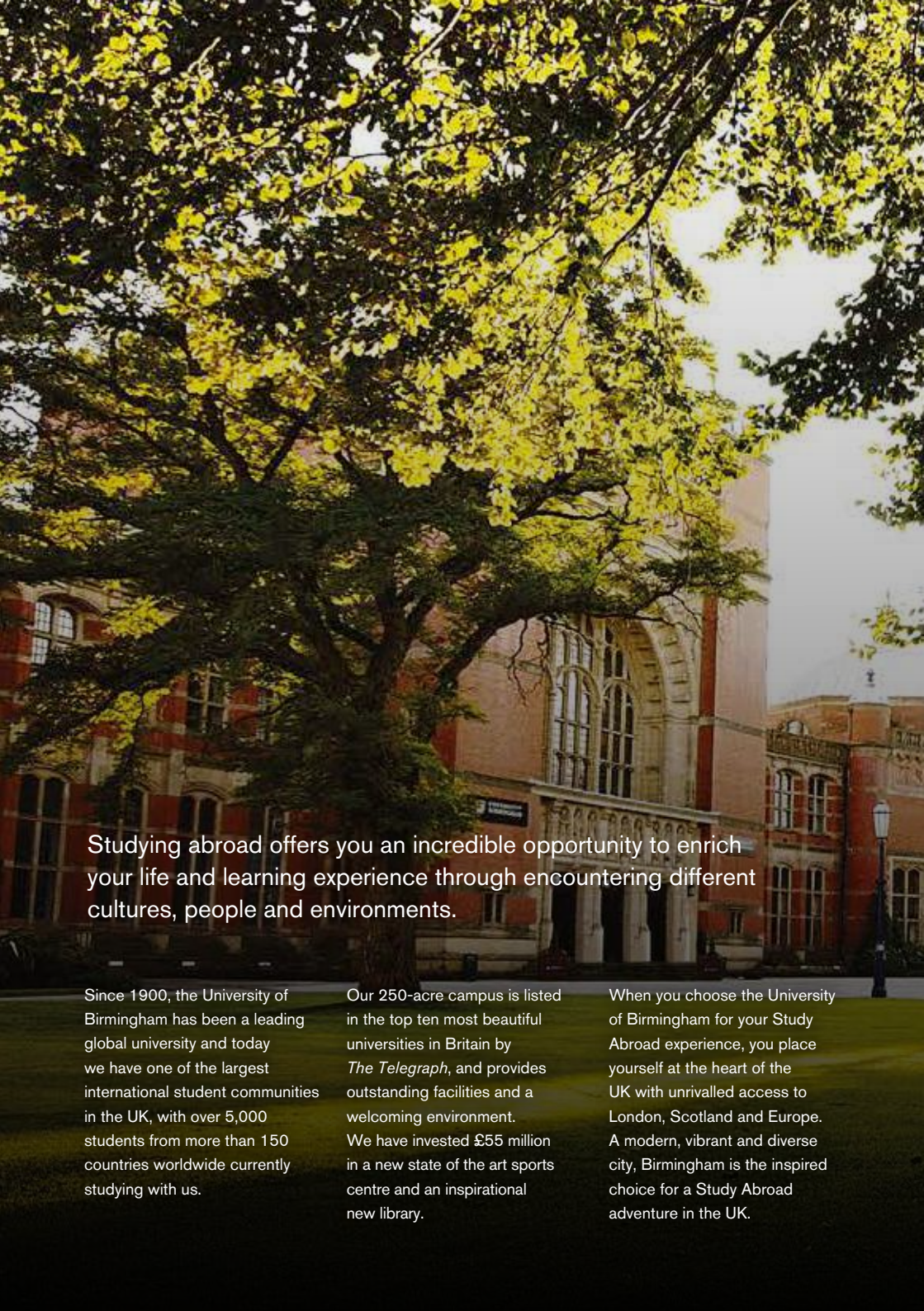
College Contact GmbH
Hanauer Landstraße 151-153, 60314 Frankfurt am Main
Telefon: 069 - 907 2007 30
E-Mail: beratung@college-contact.com
Web: <http://www.college-contact.com>

Choose Birmingham for your
Study Abroad experience

#MyGlobalStory



UNIVERSITY OF
BIRMINGHAM

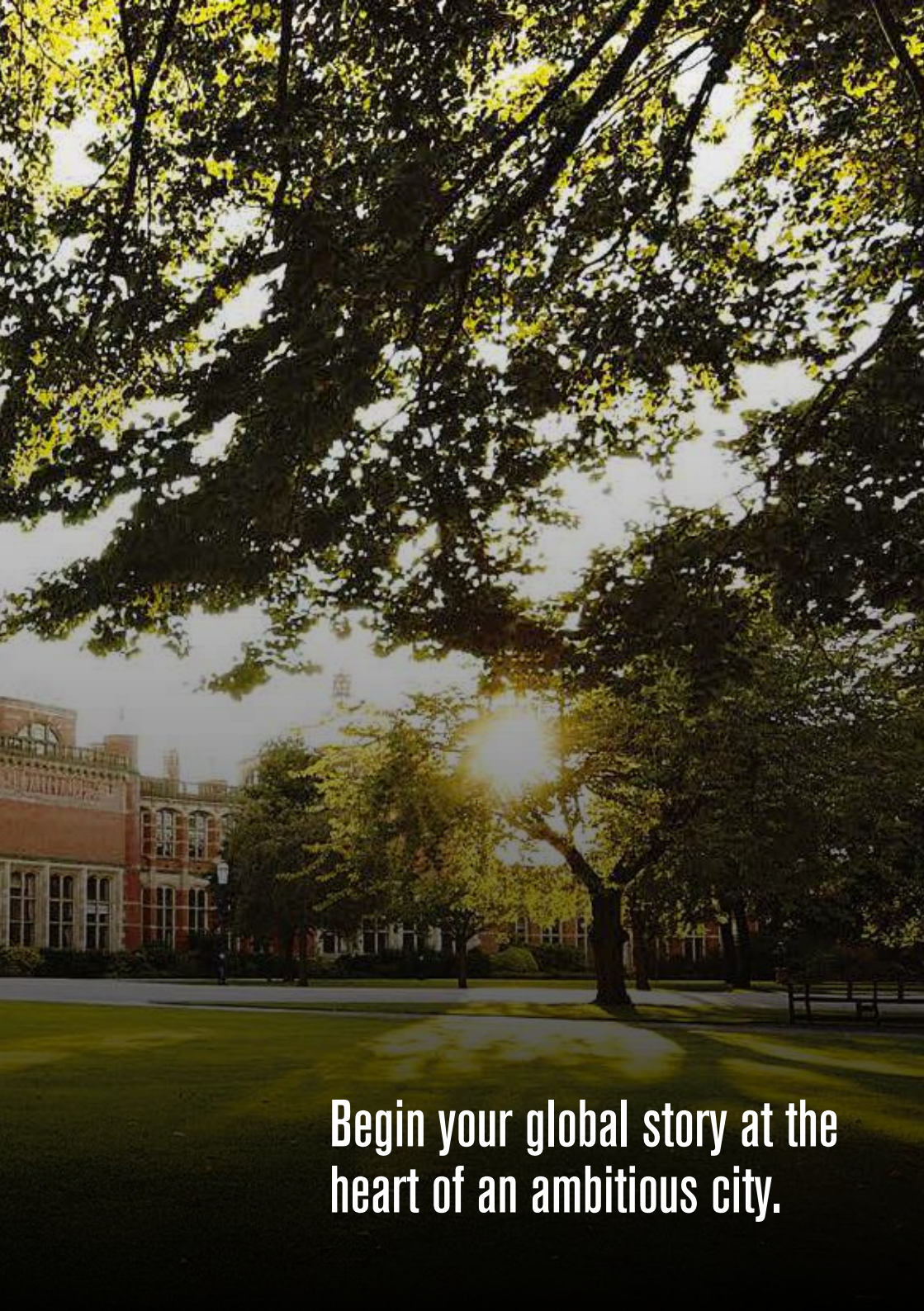
A large, leafy tree with yellow-green foliage dominates the foreground, its branches spreading across the top half of the frame. Behind the tree, a red brick building with arched windows and a classical facade is visible. The scene is set on a green lawn under a bright sky.

Studying abroad offers you an incredible opportunity to enrich your life and learning experience through encountering different cultures, people and environments.

Since 1900, the University of Birmingham has been a leading global university and today we have one of the largest international student communities in the UK, with over 5,000 students from more than 150 countries worldwide currently studying with us.

Our 250-acre campus is listed in the top ten most beautiful universities in Britain by *The Telegraph*, and provides outstanding facilities and a welcoming environment. We have invested £55 million in a new state of the art sports centre and an inspirational new library.

When you choose the University of Birmingham for your Study Abroad experience, you place yourself at the heart of the UK with unrivalled access to London, Scotland and Europe. A modern, vibrant and diverse city, Birmingham is the inspired choice for a Study Abroad adventure in the UK.



**Begin your global story at the
heart of an ambitious city.**

Contents

Welcome to Birmingham	5
World-leading experts – enhancing your learning and making important things happen	6
Green campus at the heart of a vibrant city	8
Life on campus	10
The city of Birmingham	12
The city on your doorstep	14
The world at your feet	15
Choose from a wide range of housing	17
How to apply	18
Choose from a wide range of study areas	19



Share your adventure



@UNIBirmingham



groups/myglobalstory



@MyGlobalStory

#MyGlobalStory



VIRTUAL TOUR

Explore our beautiful campus and city online through photos, videos and 360° panoramas. Chat with our staff and students about programmes available and what it's like to study and live in the city of Birmingham.

www.virtualtour.bham.ac.uk



www.birmingham.ac.uk/myglobalstory

Welcome to Birmingham

When you choose the University of Birmingham for Study Abroad, not only do you choose an outstanding university, renowned for changing lives and transforming society but you also place yourself at the heart of the UK in a modern, vibrant and diverse city. Birmingham offers the best of both worlds, a stunning green campus just a few minutes from the exciting, vibrant city centre.

At Birmingham, you will benefit from high-quality teaching in a world-class research institution that nurtures talent and will support you throughout your life and career.

**RICH IN HERITAGE
AND CULTURE,
THE UNIVERSITY
WAS ESTABLISHED
IN 1900.**



**THE UNIVERSITY
OF BIRMINGHAM
IS ONE OF THE
TOP RESEARCH
UNIVERSITIES
IN THE COUNTRY AND
A MEMBER OF THE
RUSSELL GROUP.**

**NAMED BRITAIN'S
'FOODIEST
TOWN' BY THE
NEW YORK TIMES,**
BIRMINGHAM IS BRIMMING
WITH CHARACTER AND
DELICIOUS FOOD CHOICES.



www.birmingham.ac.uk/myglobalstory

**CONSISTENTLY EXCELLING IN NATIONAL
AND INTERNATIONAL LEAGUE TABLES
BIRMINGHAM IS RANKED
76TH IN THE WORLD.**
(QS WORLD UNIVERSITY RANKINGS 2015/16)

**EXPERTS IN THEIR FIELDS,
OUR ACADEMICS SHAPE POLICY,
CHANGE LIVES AND INFLUENCE
SOCIETY.**

**OUR EDGBASTON
CAMPUS IS IN THE
TOP TEN
MOST
BEAUTIFUL
CAMPUSES
IN BRITAIN.**

(THE TELEGRAPH)

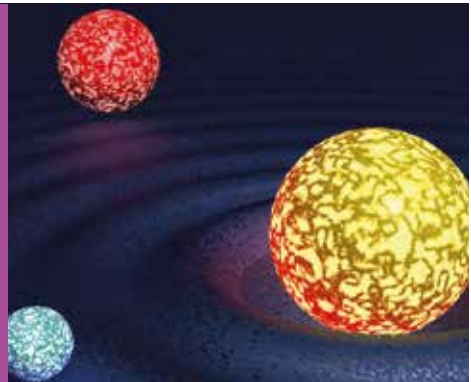


World-leading experts – enhancing your learning and making important things happen

Being taught by academic staff who are also world-leading researchers is a huge advantage for you as a student at Birmingham. Here are some of our latest research breakthroughs led by our heroes.

GRAVITATIONAL WAVES

These waves are tiny distortions of space-time caused by some of the most violent cosmic events such as colliding black holes. The observation of these 'ripples of space-time' requires exquisitely sophisticated new technology. Birmingham physicists have designed and built components for the most sensitive instruments in the world called Advanced LIGO, and developed the techniques essential to hunt for gravitational waves.



WORLD'S OLDEST QUR'AN

Radiocarbon analysis has shown a Qur'an manuscript, held by the University, to be among the oldest in the world, dated between AD568 and 645. The Qur'an manuscript is among the earliest written textual evidence of the Islamic holy book known to survive.

A photograph of four individuals, three men and one woman, standing side-by-side against a dark background. They are all looking directly at the camera with serious expressions. The woman is in the center, wearing glasses and a dark top. The men are on either side of her, dressed in business casual attire.

**BIRMINGHAM
HEROES** WWW.BIRMINGHAM.AC.UK/HEROES

At the University of Birmingham our outstanding academics are making policy, influencing society, saving lives and pioneering change. We call them our Birmingham Heroes. You can meet them at www.birmingham.ac.uk/heroes

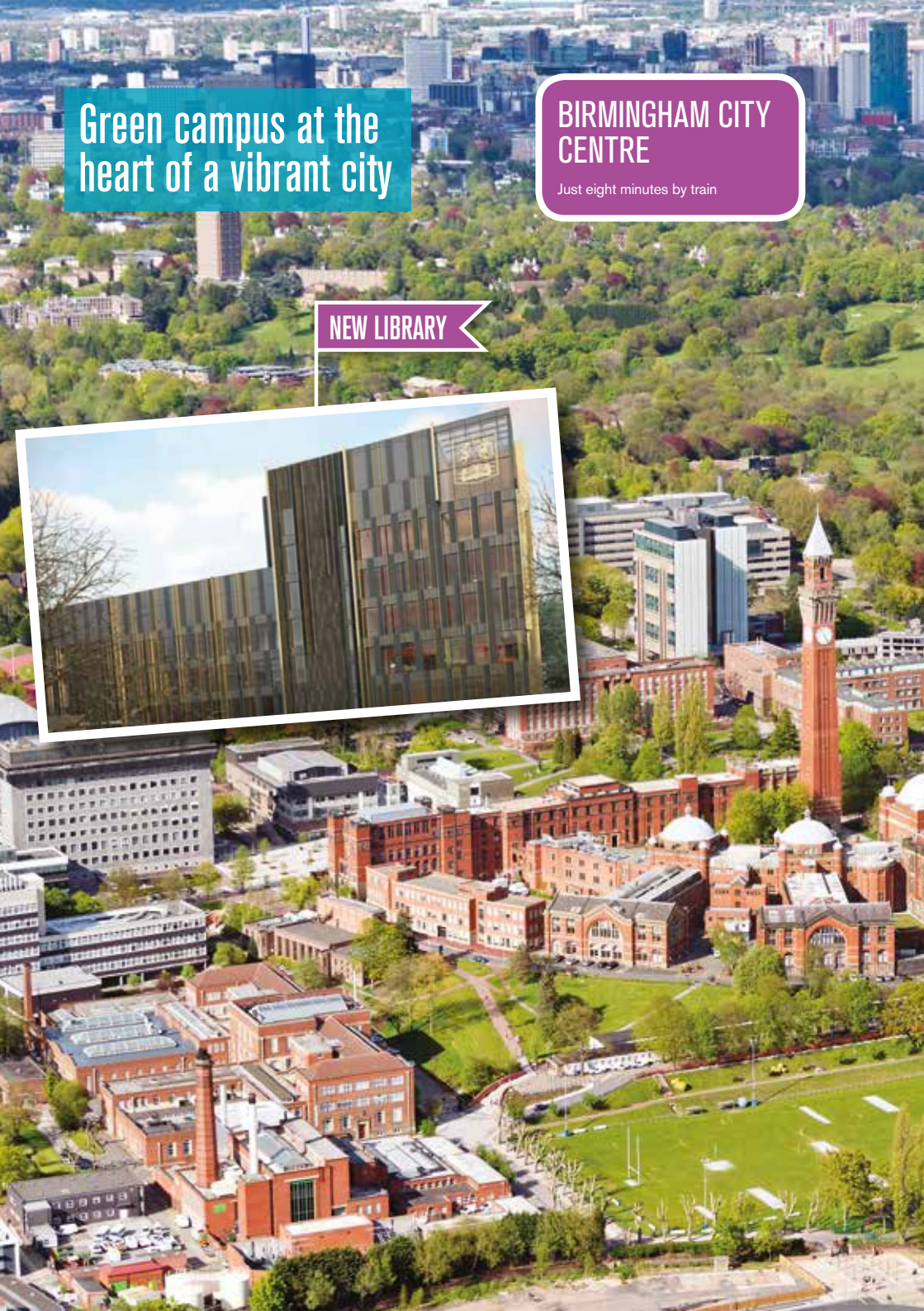


Green campus at the
heart of a vibrant city

BIRMINGHAM CITY
CENTRE

Just eight minutes by train

NEW LIBRARY



An aerial photograph of Birmingham, UK, showing a dense urban landscape with numerous buildings and a large green park area in the foreground. A winding river flows through the park. In the bottom right corner, there is a white-bordered inset photograph showing a modern building with a glass facade, surrounded by trees and a green lawn. The overall scene is a mix of urban development and natural greenery.

FACT

Surrounded by greenery,
Birmingham has more trees
than any other city in Europe!

NEW SPORTS CENTRE



Life on campus

When you choose the University Birmingham for Study Abroad not only will you be at the heart of the UK, but you'll also be studying in an outstanding learning environment.

LIFE ON CAMPUS

When you step onto campus, you are immersed in our historic redbrick buildings and glorious green spaces.

You'll find our Edgbaston campus both a peaceful and vibrant place to spend your time, whether it's studying on one of the lawns, or enjoying a hot drink in one of the many cafés.



THE GUILD

The Guild of Students represents all of the students at the University. As well as working in partnership with the University to ensure that you benefit from the best experience possible, the Guild also offers support and advice to all students, delivers fantastic student nights and entertainment in The Guild and has over 250 student groups and clubs for you to join, whether it's continuing a lifelong passion or trying something new, it's the perfect way to meet people and have fun.

Find out more about The Guild, and the societies and clubs available on campus on our website:
www.guildofstudents.com

IMMERSE YOURSELF IN CULTURE

The University is home to a rich cultural offer including museums, collections, venues and facilities, which are brought to life through a programme of cultural activity. Culture on campus is here for every student to enjoy, whether your passion is art, music, antiquities or sciences. Take a break from your studying by wandering around the serene gardens at Winterbourne House.



Winterbourne House and Gardens

GETTING INVOLVED

Whether you're interested in martial arts, dance, drama or baking, there's a wide range of fantastic societies that you can be part of and you don't have to choose just one!

Societies are open to all students and welcome both beginners and those more experienced in their field. Joining is a perfect opportunity to try something new and make new friends.

WHEN THE SUN GOES DOWN

Life on campus doesn't end when the sun goes down. At Birmingham, you have a great night out right on your doorstep. Fab N' Fresh is a hugely popular weekly club night held in Joe's Bar and the Guild's underground nightclub on campus. Dedicated for University of Birmingham students, it's perfect for a fun night out – you can even walk home!



Student Lily Owsley and graduate Sophie Bray won gold with British women's hockey team at Rio 2016



Seven athletes from the University of Birmingham competed at the 2016 Rio Olympics

We are one of the UK's leading sporting universities in the British Universities and Colleges Sport (BUCS) league and have over 53 sports clubs, so whether you're an absolute beginner or world-class athlete there are opportunities for everyone to

get involved. Home to the 360 Sport & Fitness club, which is a new £55 million sports centre boasting Birmingham's only 50m swimming pool, it also includes a large multi-sport hall, a range of activity and fitness studios, an extensive gym, six glass-backed

squash courts and various other facilities.

The University of Birmingham is the perfect place to have fun, excel and be the best you can be with one of the most comprehensive sport facilities.



The city of Birmingham

Birmingham is a modern and exciting city, famous for its historic, industrial past. It is now a centre of arts and culture, commerce and entertainment with a vibrant and diverse community.

PRIME LOCATION

At the University of Birmingham you will benefit from the best of both worlds; a beautiful green campus, just a few minutes away from the heart of an exciting, busy city. With our very own railway station on campus, trains take just eight minutes to travel into the city centre, making your journey easy and affordable!

For those travelling a little further afield, Birmingham Airport is just one train stop away from the city centre.

RETAIL THERAPY

The city centre offers a first-class retail experience; from famous brands to independent stores, you'll find a wealth of choices, including the Bullring and Grand Central for your big brands, and vintage stores in the historic industrial district of Digbeth and the Jewellery Quarter.

CULTURE HIT

Birmingham doesn't just have one sound. Catch the latest live music and DJs or watch an old film at the UK's oldest working cinema.

Don't miss the inspirational and world-famous City of Birmingham Symphony Orchestra (CBSO) or the Birmingham Royal Ballet Company. The Birmingham Hippodrome is one of the busiest and most popular theatres in the UK with over 520,000 visitors each year.

The city also boasts a wide and impressive collection of traditional and contemporary art galleries to explore, including Birmingham Museum and Art Gallery with its beautiful collection of Pre-Raphaelite artwork and the IKON gallery for contemporary exhibitions.



AFTER DARK

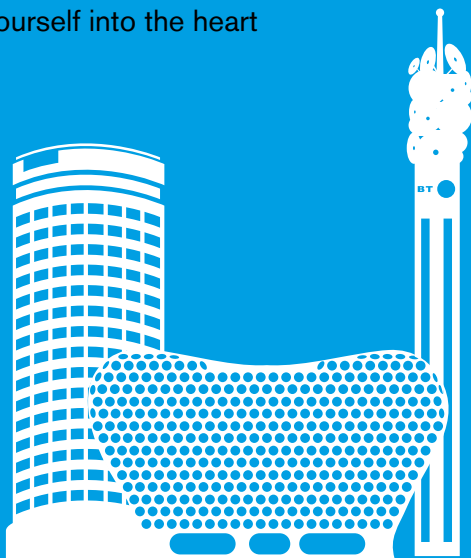
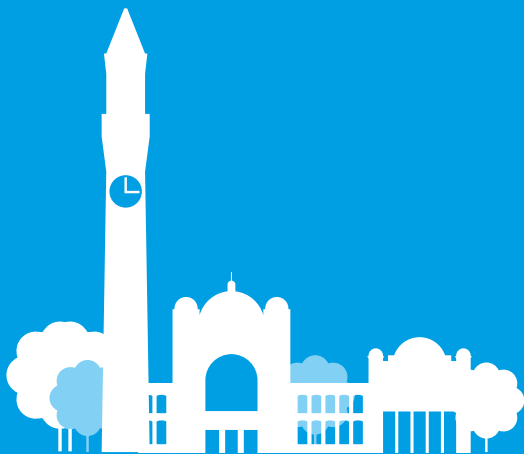
As a thriving city for students and young professionals, when the sun sets Birmingham has a vibrant nightlife and a huge selection of pubs, bars and clubs. As a student-friendly city, there are set student nights for every day of the week in Birmingham, with something for everyone. Whether you'd rather a quiet evening with some friends in one of our many bars and cafes, or a night partying in one of our clubs, Birmingham is the place to be for a great night out.



**For more information
about Birmingham visit
www.birmingham.ac.uk/myglobalstory**

The city on your doorstep

Studying at the University of Birmingham means that you benefit from both an exciting and busy city, as well as a beautiful, historic university campus. If you like the buzz of a vibrant city, there are plenty of ways to transport yourself into the heart of Birmingham.



A FULL TAXI OF FRIENDS
CAN COST AS LITTLE AS
£3 EACH FROM THE CITY
TO CAMPUS, PERFECT
AFTER A FUN NIGHT OUT



CATCH THE TRAIN FROM
UNIVERSITY STATION STRAIGHT
TO BIRMINGHAM CITY CENTRE
IN EIGHT MINUTES

WITH BIRMINGHAM AIRPORT
ON YOUR DOORSTEP,
TRAVELLING TO MAINLAND
EUROPE COULDN'T BE EASIER.
EXPLORE THE STREETS OF
AMSTERDAM LIKE A LOCAL
OR BE IN PARIS IN TIME
FOR DINNER



TAKE THE SCENIC ROUTE AND
WALK ALONG THE CANALS THAT
RUN FROM CAMPUS INTO THE
HEART OF BIRMINGHAM

The world at your feet



FACT

- ❑ Birmingham is the youngest city in Europe, with under-25s accounting for nearly 40% of its population
- ❑ We are the only university in mainland Britain with our own railway station on campus, aptly named 'University'
- ❑ With over 8,000 acres of parks and open space, Birmingham is one of the greenest cities in the UK

Please note: journey times are for guidance only and are based on the average time taken for off-peak trains travelling between mainland UK city centre stations and flight times from Birmingham Airport.



Choose from a wide range of housing

Although this might be your first time living away from home in a different country, you'll soon feel at home with our range of safe, welcoming student accommodation. This means you can waste no time starting your adventure, making new friends and exploring your new world.

UNIVERSITY HOUSING

If you're a Study Abroad or an International Exchange Programme student from outside of Europe, the University is able to guarantee your housing in one of the many villages across campus. For those travelling from inside Europe, try to apply as early as possible, but if you're unable to get a place in University housing, there's plenty to choose from in the private sector.



PRIVATE HOUSING

Our Living Team will help you find suitable housing in the private sector. If this is your preferred choice there is a wide range of accommodation available in the local area, including single flats, shared flats, houses for groups of various sizes, properties for families and lodgings with a residential landlord. Our accommodation search engine can also put you in touch with other prospective students before arriving in Birmingham, enabling you to rent accommodation as part of a group: www.birminghamstudentpad.co.uk



How to apply

Most students spending a semester or a full academic year at the University of Birmingham come through the exchange agreements with our partner institutions across Europe and the rest of the world. We also welcome applications from students from non-partner universities on a fee-paying basis. Please visit our website for further details.

CHECK YOUR ELIGIBILITY

To study at Birmingham you must meet the following entry requirements:

- ☐ Be a native speaker of English or achieve an English Language qualification equivalent to IELTS 6.5 (7.0 for Law)
- ☐ Have completed at least one year of university study
- ☐ Achieved a grade point average (GPA) of at least 3.0 or equivalent
- ☐ Demonstrate a particular interest or background in the subject chosen

WHAT HAPPENS NEXT?

Once you have been made an offer of a place you will receive an offer letter. All of the information that you require prior to your arrival at the University will be sent to you electronically or it will be available online. You can also visit the Welcome pages on the University's website which contain useful information for students starting at Birmingham.

ARE YOU A NON-NATIVE ENGLISH SPEAKER?

In order to undertake a programme of study at the University of Birmingham, you need to demonstrate a suitable level of English Language proficiency. You can demonstrate your level of English with IELTS/TOEFL/PTE or alternative qualifications. Learn more about these requirements at: www.birmingham.ac.uk/myglobalstory

HOW TO APPLY

If you're an Erasmus or International Exchange Student, your home university must nominate you first before you can apply. Once you've been nominated the Study Abroad team will then get in touch with you by email and invite you to apply online. For students at non-partner institutions, nominations are not required and you can apply directly online. To apply online please visit: www.birmingham.ac.uk/myglobalstory

When applying online, you will need to upload the following supporting documents:

- ☐ One academic reference
- ☐ A copy of an official transcript showing the courses studied at your home institution and your grades
- ☐ A copy of your passport/ID photo page
- ☐ Evidence of your English Language qualification (if applicable)

To apply online visit:
www.birmingham.ac.uk/myglobalstory

Choose from a wide range of study areas:

Subjects

- ☐ Accounting and Finance
- ☐ African Studies
- ☐ American and Canadian Studies
- ☐ Archaeology and Ancient History
- ☐ Biosciences
- ☐ Business
- ☐ Chemistry
- ☐ Classical Literature and Civilisation
- ☐ Computer Science
- ☐ Creative Writing
- ☐ Drama and Theatre Arts
- ☐ Earth Sciences (Geology)
- ☐ Economics
- ☐ Education
- ☐ Engineering – Chemical; Civil; Electronic and Electrical; Mechanical; Metallurgy and Materials; and Railways
- ☐ English Literature
- ☐ English Language
- ☐ Environmental Science
- ☐ Film Studies
- ☐ Geography
- ☐ Geology
- ☐ History
- ☐ History of Art
- ☐ International Relations
- ☐ Law
- ☐ Liberal Arts and Natural Sciences
- ☐ Materials Science and Engineering
- ☐ Mathematics
- ☐ Modern Languages
- ☐ Music
- ☐ Nuclear Science and Engineering
- ☐ Philosophy
- ☐ Physics and Astronomy
- ☐ Physiotherapy
- ☐ Policy, Politics and Economics
- ☐ Political Science
- ☐ Psychology
- ☐ Social Policy
- ☐ Social Work
- ☐ Sociology
- ☐ Sport and Exercise Sciences
- ☐ Sport, Physical Education and Coaching Science
- ☐ Theology
- ☐ Urban Planning

Choosing Birmingham for your Study Abroad semester or a full academic year means you will have access to one of the widest range of courses available at any UK institution. Birmingham is organised into five colleges and all of our subjects, except those in the College of Medical and Dental Sciences, are open to Incoming Exchange and Study Abroad students providing they meet the entry requirements.

For more information on how to apply and help choosing classes visit: www.birmingham.ac.uk/myglobalstory



UNIVERSITY OF
BIRMINGHAM

Edgbaston, Birmingham,
B15 2TT, United Kingdom
www.birmingham.ac.uk