



COLLEGE
CONTACT.COM

College Contact GmbH
Hammer Str. 39, 48153 Münster
Telefon: 0251 - 149 893 50
Email: beratung@college-contact.com
Web: www.college-contact.com

PSB ■ ■ ■
PARIS SCHOOL
OF BUSINESS 

ACTING BEYOND KNOWLEDGE

LIVE THE MAGIC OF PARIS

PSB PARIS SCHOOL OF BUSINESS
STUDY ABROAD & EXCHANGE PROGRAM



Bienvenue

Dear students,

Are you looking to experience the undeniable energy and vibrant culture of the famous City of Light, while discovering new inspiration and knowledge among your peers, faculty and community?

Congratulations! You are in the right place.

At PSB Paris School of Business, we welcome you to explore our programs and to join us in shaping the world's next generation of leaders in a truly international environment.

Join us on our state of the art campus for one or two semesters of business studies in beautiful Paris, and experience firsthand the meaning of our core philosophy: "**Acting beyond knowledge**".

We look forward to seeing you soon here at PSB Paris School of Business.



Armand DERHY, Ph.D.
Dean



SUMMARY

- 2** PSB at a glance
- 4** Study in Paris
- 5** 10 things you can only do in Paris
- 6** Living in Paris
- 8** Studying at PSB
- 10** Units of study
- 12** How to apply

PSB at a glance

Founded in 1974, PSB Paris School of Business is a state-recognized European elite management school that combines academic excellence, international awareness, and professional experiences. A member of the Conference of Grande Écoles, EFMD and AACSB, the institution offers several programs: Undergraduate (International BBA), Graduate (AMBA accredited), and post-Graduate (MSc, MA, MBA, Executive DBA) as well as Study Abroad and Short Programs.

Located in a brand new and innovative cluster in Paris' 13th arrondissement, **PSB Paris School of Business hosts more than 3,000 students from 75 different countries**, and has more than 150 active educational partners worldwide, as well as up to 3,000 partner companies. In 2014, PSB Paris School of Business joined Campus Cluster Paris Innovation (CCPI), a new collaborative campus that aims to gather in one place the worlds of education, management, entrepreneurship, and the digital economy.

PSB QUICK FACTS



- 3,100** students currently enrolled
- 22%** of students are international
- 75** different nationalities on campus
- 215** incoming students annually in our exchange and study abroad program
- 470** degree-seeking international students
- 603** PSB students studying overseas on exchange or study abroad



- 350** full time staff
- 92** permanent faculty
- 1** friendly and efficient International Office



- 12,150** alumni worldwide



#STUDY@PSB

Spend one or two semesters of studies at one of the most prestigious business schools in Paris, France and receive credit towards your degree. Study at PSB and live the magic of Paris!



Courses in French and English
at both undergraduate
and postgraduate levels



**Certificate of Business available
in 4 different majors**



Dedicated International Office
supports you from the moment
you apply to when you return home



Ranked among the top 7.5%
private business schools in Europe



Paris ranked #1 QS best student
cities for the last 4 years



Campus in central Paris

Study in Paris

Parisian locals and visitors have agreed for centuries on one thing: there's just no place in the world like the City of Light. Elaborately grand, yet warmly intimate; extravagantly elegant, yet simple in all the right ways; Paris is a city that continues to capture the hearts and minds of those who visit or live there. Paris has surprises around every corner. It's up to you to come discover it for yourself.

ABOUT PARIS



Population:
2,300,000



Student
Population:
325,000



International
Population:
335,000



Average
Temperature:
Winter 0-5°C,
Summer 20-25°C



Transportation:
International and
domestic airports,
subway, tramway,
bus, train, bike and
car sharing system.



Places of Worship:
Paris has always been
home to many religious
groups.



As part of Campus Cluster Paris Innovation, PSB is conveniently located in downtown Paris

Walk

- **5 min** from Olympiades
Subway station
- **10 min** to the Seine river

Subway

- **15 min** from Gare de Lyon
train station
- **20 min** to Bastille square

Bike

- **20 min** from Parc
Montsouris / Cité
Universitaire

Car

- **21 min** from
the Eiffel Tower

Eurostar

- **3 h** from London



1 - Grab a Velib' from the public bikesharing service and take a ride on the Champs-Élysées from the Arc de Triomphe to the Place de la Concorde.

2 - Take a cruise on the Seine at night - and understand firsthand why Paris is called "La ville lumière", the City of Light.

3 - Climb the Iron lady, otherwise known as the one and only Eiffel Tower.

4 - Experience the music, sights, and emotions of a ballet performance at the majestic Opéra Garnier.

5 - Cheer for PSG, Paris's local football team, at Parc des Princes, the home stadium of the red and blue.

6 - Explore the "Puces de Saint-Ouen", the largest flea market in the world, and discover truly unique vintage items and antiques.

7 - Perfect your tan at "Paris Plage", when the city transforms the banks of the Seine River into artificial beaches each summer, complete with sand and palm trees.

8 - Shop til you drop at one of the Grands Magasins, Paris' classic high-end department stores famous for their extravagant architecture and decorations.

9 - Get one-on-one with Paris' most famous and lovely celebrity, the Mona Lisa, at the Louvre, the most visited art museum in the world.

10 - Take your time enjoying some French wine at a Parisian café, and learn to savor the unique French art de vivre.

THINGS YOU CAN ONLY DO IN PARIS
10

Living in Paris

Accommodation

PSB Paris School of Business is centrally located in Paris within the Campus Cluster Paris Innovation, and offers various accommodation options in the surrounding area. You can choose from public or private residences, shared furnished apartments, a homestay, or opting to find accommodation on your own.

Student Residences

- **Cité Internationale Universitaire de Paris (CIUP)**

The CIUP is a private foundation and the only student campus in Paris, whose 40 houses are home to 6,000 students. Located in the 14th district, this campus is made particularly unique by the fact that each house represents a country or a region of the world.

More details at: ciup.fr/en/houses/applying-for-housing

- **Résidence Le Palatino**

This brand new residence hall opened in 2015 in the 13th district. It's just 15 minutes away from Campus Cluster Paris Innovation. It offers fully furnished apartments with kitchenette (kitchen kit included) and private bathroom with rent ranging from 850€ to 1,200€.

More details at: loc-habitat.com/residence_asforesd_paris_le-palatino

- **Résidence Melon District**

Residence Melon District is another brand new upscale residence. Located at La Défense, one of the most modern districts in Paris, it is about 45 minutes away from campus by public transport. It provides similar facilities as the above residence.

More details at: melondistrict.com/en/students/paris/melon-district-la-defense

Shared apartments

- **Comfort of Home**

If you are interested in shared accommodation and wish to secure a place before your arrival, we recommend using Comfort of Home - Paris. This specialized agency is the European leader in study abroad accommodation. Their team will find you an authentic Parisian apartment, fully furnished and inside of the city so you can experience the authentic Parisian lifestyle.

More details at: comfortsofparis.com

- **Studapart**

Studapart is a private accommodation platform only to open enrolled PSB students. Domestic students who are scheduled to leave for their own study abroad experience can rent out their own flats on the platform, and incoming students can book flats in the same way. Studapart also lists private accommodations around the school.

Living Costs

Living costs in Paris vary depending on your lifestyle and the type of accommodation you choose. but luckily Paris has many options for making the most of any budget. There are many markets in the city where you can buy cheap, fresh food, as well as many free events, festivals, and activities for students. We recommend a budget of 1,000€ to 1,500€ for each month you plan to study in Paris. This includes the cost of accommodation. To get an idea of the cost of some common items in Paris, see the list here:

- | | | |
|-----------------------------------|--|----------------------------------|
| • Baguette: 0.80€ | • Daily newspaper: 1-2€ | • A camembert: 1.50€ |
| • Espresso coffee: 1.20€ | • One-way subway ticket: 1.80€ | • A haircut: Women 40€ / Men 20€ |
| • Packet of pasta: 0.80€ | • Monthly Pass Navigo: 73€ | • Doctor's appointment: 22€ |
| • Big mac menu: 7.95€ | • One day Velib' (bike sharing) ticket: 1.70€ (includes unlimited free rides of 30min) | • Lunch on campus: 5-7€ |
| • Can of Coke: 1€ | • A pint of beer: 7€ | • Lunch outside campus: 10-15€ |
| • Student movie ticket: around 8€ | | |

Prices provided as a guide only.

“

The staff are always very helpful and that include all professors. My best experiences at PSB are when I get to participate in challenges with real companies. I feel like these challenges really give students hands on experience so we can apply the knowledge we are gaining.

Rayne R., USA

”



Studying at PSB

Academic Life

You can study at PSB Paris School of Business for one or two semesters, beginning in Fall Semester (September to December) or Spring Semester (January to May). You are required to enroll for 6 to 30 ECTS per semester. Most units of study are valued 6 ECTS.

Certificate of Business

You can obtain a Certificate of Business in the specialization of your choice, including Luxury Management, Finance & Accounting, Marketing, or Management. This represents a total of 30 ECTS, including the completion of three units from the same discipline as well as two electives from the BBA track.

French Language Courses

Students from non-French speaking backgrounds may complete a preparatory French language course before commencing their study abroad program at Beginner and Intermediate level.

Modes of Study

Depending on your chosen course, you will have the opportunity to participate in a range of dynamic learning and teaching environments. These may include lectures, workshops, tutorials, group work, internet challenge, case studies, practical sessions, discussion groups, external visits, and more.

Assessment Methods

Assessment takes various forms. In your classes, you will be assessed through a combination of assignments, reports, assignments, class presentations, class participation and group projects.

Extranet

The PSB portal provides all the information you need to stay updated and informed about your studies. It includes class schedules, learning resources, and links to a range of useful sites that will help you navigate your academic experience and needs.

Campus Life

PSB aims to create a warm, welcoming atmosphere on campus, where students truly feel at home. Through our dedicated staff and state-of-the-art facilities and services, PSB Paris School of Business strives to provide an exceptional experience for every student.

Library and Study Spaces

The Campus Cluster Paris Innovation library offers extensive resources for students, including books, journals, and other electronic resources.

Food and Beverage

PSB's campus offers two different on-site options for food and drinks: the cafeteria and the Anticafé. Here, you can enjoy a hot meal, refreshments, or a quick snack in comfortable seating areas, while relaxing, socializing with friends, holding meetings, or simply working quietly with a hot cup of coffee and your laptop.

Students Clubs and Societies

PSB students can make friends with students from all over the world by joining any of more than 20 student clubs and societies. Additionally, VIP (Very International People), the association dedicated to international students at PSB, frequently organizes events and entertainment activities for international students to hang out, meet new people, and have fun.

Staying Happy and Healthy

The staff at PSB's International Office is available to speak with students about any aspect of their studies and to provide academic counselling and support whenever needed.



PROGRAM OPTIONS

PSB Paris School of Business offers a variety of programs available to international students.



Option 1: PSB Exchange Program

Available to students from universities that are part of the PSB exchange partner network.

Exchange students must be nominated by their home universities to be able to apply.

- Study full time (up to 30 ECTS/semester) for one or two semesters at PSB.
- Available to eligible students who are enrolled at, and nominated by an official PSB exchange partner.
- Apply through your home university's international office.
- Pay your tuition fees to your home university while you study at PSB.



Option 2: PSB Study Abroad Program

Available to students from universities that are not part of PSB's exchange partner network.

Study abroad students can apply directly to PSB.

- Study full time (up to 30 ECTS/semester) for one or two semesters at PSB.
- Available for students from any recognized university or college with at least one year of studies after high school.
- Apply directly to PSB's International Office.
- Pay tuition fees to PSB.

Other Study Options at PSB

PSB Paris School of Business also offers specialized packages, such as a two-week summer or winter school program in Luxury, Doing Business in Europe, Arts and Cultural Management, as well as degree programs at both undergraduate and postgraduate levels, in French or English.

For more information on the full range of degree options currently available at PSB Paris School of Business, visit psbedu.paris

Units of Study

International students enrolled in the PSB Exchange or Study Abroad Program can select courses from two different programs: PSB Grande École Program & PSB International BBA Program.

PSB Grande École Program (French and English)

PSB Paris School of Business' 5-year Grande École Program consists of three years of Bachelor level studies (Undergraduate) and two years of Master level studies (Postgraduate).

► Select between 1 to 5 units per semester, each unit is worth 6 ECTS.

Undergraduate

- Accounting
- Analysis and Synthesis
- Business Information Systems
- Business Law
- Business Planning
- Business Strategy
- Communication Skills
- Consumer Behavior
- Economics for Managers
- Financial Markets
- French Beginner
- French Intermediate
- Geopolitics
- Intercultural Communication
- International Business
- International Relations
- Management
- Managerial Accounting
- Managerial Economics
- Marketing
- Mathematics for Managers
- Organizational Behavior
- Principles of Accounting
- Principles of Business Law
- Principles of Corporate Finance
- Principles of Economics
- Principles of Management
- Principles of Marketing
- Quantitative and Qualitative Analysis
- Strategic Management
- Strategic Marketing

Postgraduate

- Advanced Financial Analysis
- Corporate Finance
- Corporate Social Management
- Corporate Strategy
- E-Business and IT Management
- Entrepreneurship and Innovation Management
- Financial Management
- Financial Markets
- International Business Environment
- International Business Strategies
- International Project Management
- Logistics and Supply Chain Management
- Managerial Accounting
- Marketing Management
- Portfolio Management
- Regulations and Taxation
- Risk Management
- Securities Transactions and Tools for Financial Markets
- Strategic Cost Management

PSB International BBA Program

The International Bachelor of Business Administration (BBA) consists of three years of Bachelor level studies (Undergraduate) and allows you to specialize your study abroad semester in Management, Marketing, Luxury, Finance with the option to complete a Certificate of Business worth 30 ECTS.

► Select at least 3 Units from one major from the below tracks plus 2 electives.

PSB Certificate of Business in International Management

Fall Semester

- Principles of Operation Management
- Human Resources Management
- Project Management

Spring Semester

- Entrepreneurship
- International Strategic Management
- Management of Change and Innovation
- Business Intelligence

PSB Certificate of Business in International Marketing

Fall Semester

- International Marketing
- Consumer Behavior
- Principles of Advertising
- Strategic Marketing

Spring Semester

- Marketing Planning & Strategy
- Marketing of Services
- Marketing Research

PSB Certificate of Business in Luxury Brand Management

Fall Semester

- History of Luxury
- Luxury Merchandising
- Fundamentals of the Luxury Industry

Spring Semester

- Luxury Brand Management
- Sales techniques for Luxury Brands
- Geopolitics of the Luxury Industry
- Client Relationship Management in the Luxury Industry

PSB Certificate of Business in Finance & Accounting

Fall Semester

- Principles of Investments
- Managerial Accounting
- Financial Markets
- Corporate Finance

Spring Semester

- International Finance
- Portfolio Management
- Financial Reporting and Regulation

Electives

Fall Semester

- Principles of Accounting
- Principles of Marketing
- Marketing
- International Relations
- Geopolitics
- Business Information Systems
- Economics of Innovation
- Mathematics for Managers
- Quantitative and Qualitative Analysis
- Basic Calculus
- Financing New Ventures
- Intercultural Communication
- Communication Skills
- Principles of Management
- Organizational Behavior
- Sociology
- Business Law
- French Beginner
- French Intermediate

Spring Semester

- International Business
- Geopolitics
- Global Risk Management
- Principles of Economics
- Managerial Economics
- Economics of Innovation
- Global Risk Management
- Mathematics for Managers
- Intermediate Algebra
- Basic Calculus
- Digital Business
- Intermediate Algebra
- Critical Thinking
- Principles of Corporate Finance
- Financing New Ventures
- Intercultural Communication
- Communication Skills
- Business Strategy
- Management
- Business Ethics & Corporate
- Social Responsibility
- Sociology
- Critical Thinking
- Business Law
- French Beginner
- French Intermediate

This is a non-exhaustive list subject to change without notice.

Visit psbedu.paris/en/international/incoming-study-abroad-exchange to search the full list of available subjects in English and French.

Eligibility for enrollment in individual units will be determined based on prerequisite selection criteria and previous studies.

How to apply?

PSB Exchange Program Nomination & Application Process

1 Acknowledgement

First, your home institution will need to complete our nomination form to appoint you as a selected student to undertake an exchange at PSB Paris School of Business.

2 Application

Upon selection and nomination by your home institution, you will receive an email with a link to complete PSB's Exchange Program Online Application. You will need to complete the application and upload the following documents (PDF file only):

- One Passport-Size Photograph
- Most Recent Academic Transcripts of Records
- English or French proficiency (see requirements)
- Passport or Identity Card
- Confirmation of International Health Insurance for the Length of your Stay in Paris

PSB Study Abroad Program Application Process

1 Acknowledgement

Get in touch with PSB's International Office to notify your desire to enroll for a PSB Study Abroad Program. Make sure to check the available courses list to confirm it matches with your home university's academic requirements.

2 Application

Upon confirmation of your eligibility by PSB's International Office, you will receive an email with a link to complete PSB's exchange Online Application. You will need to complete the application and upload the following documents (PDF file only):

- One Passport-Size Photograph
- Most Recent Academic Transcripts of Records
- English or French proficiency (see requirements)
- Passport or Identity Card
- Confirmation of International Health Insurance for the Length of your Stay in Paris

3 Acceptance

Upon receipt of your application and required documents, PSB International will process the documentation. You will receive an e-mail when formally admitted to the university including a letter of acceptance, as well as the course selection form to be completed.

4 Course Selection

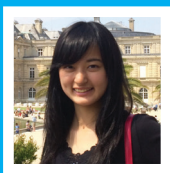
Information related to your course schedule will be provided about six weeks before the beginning of semester. You will need to provide with a learning agreement or course request list of what you intend to study at PSB so you can be enrolled into classes. You will still be able to change your course selection either before or after your arrival on campus.

5 Pre-departure

Admitted students will start receiving information regarding their stay at PSB via email and/or through Extranet.



Our Students' stories



Ayaka W.
Japan

« I met a lot of wonderful people and had an amazing experience here in PSB. I was able to take courses which are not offered in Japan. The class atmosphere and way of teaching fascinated me a lot. Besides, since students come from all over the world, they helped me increase my knowledge of different cultures and different perspectives. I enjoyed hanging out with them in Paris which is one of the best student's city! »



Dmitrijs P.
Latvia

« PSB Paris School of Business was just a perfect destination for my exchange semester. I really wanted to choose business-related courses such as Project Management, Branding or International Business. At the same time, living in the heart of Paris for an entire semester to me was just an incredible experience itself. I had a chance to explore the culture, the city's tremendous heritage, get to know many friendly people and also learn French. »



Valentina G.
Switzerland

« The professors, mostly with international backgrounds, were competent and qualified, therefore I learned a lot. I would never miss this time neither in Paris nor at PSB, because I made a lot of new friends which will last for a lifetime. On the other side I learned a lot from the classes, therefore it was the perfect combination for me. I recommend all foreign students to go to PSB because this school as well as Paris offer so many possibilities - an amazing time is guaranteed! »

Further Information

psbedu.paris/en/international/incoming-study-abroad-exchange

E-mail: Lmatti@psbedu.paris • Phone: +33 (0) 1 55 25 69 58



PSB International Office



@psbedu



@psbedu



psb_edu

Disclaimer: the information contained in this brochure was correct at the time of publication but this information may be subject to corrections or changes without notice. PSB reserve the right to alter or amend the material contained in this guide. PSB assumes no responsibility for the accuracy of information provided by third parties.

07/16 • ESGCV-PSB SAS, a French simplified joint-stock company with a capital of €13,267,469, listed in the Paris RCS Trade Register under number 752 - 535 476, with headquarters at 18 rue Guillaume Bertrand 75011 Paris - France