

International Guide



University of
Roehampton
London

Contents

Welcome from Vice-Chancellor	4
Why Roehampton?	6
Course listings	10
Entry and fees	12
Campus and accommodation	16
Best of both worlds	18
Student life	20
Student support and careers	22
How to apply	24
Your timeline to Roehampton	25

Welcome

Roehampton is a very special university. We have a proud history stretching back 182 years and are the only campus-based collegiate university in London. Our four colleges provide a strong sense of community and our size means you will get to know those that teach you and those you study with.

At Roehampton we pride ourselves on helping all students, regardless of their background, to develop the skills they need for a successful graduate career and fulfilling life.

The student experience is at the heart of everything we do. We work in partnership with students to make sure that every moment at Roehampton matters. As a Roehampton student, you will work with academic staff who are at the cutting edge of their fields and produce innovative and internationally renowned research.

We believe that an education is not just about getting a great degree, but also broadening your experiences, preparing yourself for your chosen career, and making lifelong friendships. You will have plenty of opportunities to get involved with University life both academically and socially.

A Roehampton degree is designed to ensure that you graduate with the qualities you need to succeed: confidence, adaptability and the capacity to work with people from all walks of life.

We hope to see you at Roehampton soon.

Jean-Noël Ezingeard
Vice-Chancellor



Why Roehampton?





London's only parkland campus university, with first-rate academic, sporting and leisure facilities.



One of the most diverse student communities of any university in the UK with students coming from

141

countries.

A modern university but with a distinctive collegiate history dating back to 1841.



30 minutes from the centre of London

A friendly, safe and close-knit community.





**Best modern university
in London in the Times
Good University guide
2022**

See here: [www.roehampton.ac.uk/
news/2021/september/roehampton-again-
ranked-top-modern-university-in-london/](http://www.roehampton.ac.uk/news/2021/september/roehampton-again-ranked-top-modern-university-in-london/)

Over

55

**student societies and
more than 200 social
events every year,
so you can make the
most of your time at
Roehampton.**

**Affordable on-campus
accommodation in
the heart of south west
London.**

**“Studying at
Roehampton has
been the best three
years of my life,
so I would strongly
recommend it to
everyone.”**

Erik Ovregard, Norway
Media, Culture and Identity



Course listings

Roehampton offers a wide range of programmes spanning five academic schools and faculties.

School of Arts, Humanities, and Social Sciences

Dedicated to nurturing holistic growth, our faculty consists of experts who have made their mark on the global stage through pioneering research and innovative teaching approaches.

At the heart of our approach lies the belief in experiential learning. Our curriculum is enriched with career-focused modules, opportunities to study abroad and optional placement years that bridge the gap between theory and practice, equipping you with versatile skills that transcend disciplines. This pragmatic foundation empowers you to explore a wide spectrum of career paths and make a meaningful impact in many professional spheres.

Faculty of Business and Law

Our Faculty believes that businesses and legal professionals should always have a social conscience, and that we should all be socially responsible in everything we do. These values are embedded in our teaching and research. We also want our graduates to be at the forefront of their careers so that they can make a difference.

School of Education

Based in historic Froebel College on Roehampton's main campus, the School of Education is renowned for its high quality teaching and research. With a teacher training heritage that stretches back 182 years, it's no exaggeration to say that our graduates have taught and influenced the lives of millions of children.

As well as being one of the largest providers of initial teacher training in London and the south east, we have an exciting suite of master's and postgraduate certificate programmes to help education professionals excel in their careers.

School of Life and Health Sciences

Our diverse life and health sciences community are dedicated to understanding and improving the living world through ground-breaking advances in scientific research. Whether you want to gain an insight into humanity, conserve animal diversity, improve our overall health by studying diseases or nutrition, or optimise athlete's sport performance, we have the ideal programme for your career ambitions.

School of Psychology

Join our Psychology community to collaborate with leading experts and practitioners in mental health and gain a strong scientific understanding of the mind, brain, and human behaviour at Roehampton, where 100% of our research is rated 'world-leading' or 'internationally excellent' for its impact.

School of Continuing Education

Our School of Continuing Education offers a range of short professional courses as well as full awards to support learners reach, or progress, in their chosen career.

Graduate School

The Graduate School is the centre of the research student community at Roehampton.



Scan for further
information about
our courses

International

At the University of Roehampton, we have one of the most diverse international student populations in London, with students from 141 countries around the world. We warmly welcome a large number of students from all over the world each year. We offer a wide range of engaging programmes across our academic departments.

Academic entry requirements

At the University of Roehampton we welcome applications from academically qualified students world-wide. Along with a complete application international applicants will be required to submit various supporting documents. This will usually include: academic qualifications (certificate and transcript), a valid English language qualification, a personal statement and two references.

Please visit our website for more details about academic entry requirements or contact us via email.

<https://www.roehampton.ac.uk/international/entry-requirements>

English language requirements

To follow your chosen programme successfully, you will need to be fluent in written and spoken English. These are the qualifications in English regarded by the University of Roehampton as an acceptable minimum level of competence:

Undergraduate requirement

IELTS 6.0 overall with no less than 5.5 in any band.

Trinity College London Integrated Skills in English ISE II (Merit).

Postgraduate requirement

IELTS 6.5 overall with no less than 5.5 in any band.

Trinity College London Integrated Skills in English ISE II (Distinction).

Research requirement

IELTS 7.0 overall with no less than 6.5 in any band Trinity College London Integrated Skills in English ISE III.

Other qualifications such as the Roehampton English Language test, TOEFL Internet Based Test, Pearson Test of English, GCSE English, IGCSE English, IB English, Cambridge Proficiency Certificate and Cambridge Advanced Certificate may be accepted for students applying for undergraduate or postgraduate programmes. Please check with our Admissions team if you are not sure if your qualification would be accepted.

Fees and Funding

Tuition fees

Tuition fees can be found on the relevant course pages here:

roehampton.ac.uk/courses

Scholarships

We offer a range of scholarships for Undergraduate and Postgraduate international students. The full list of scholarships can be accessed here:

roehampton.ac.uk/student-support/financial-support-and-guidance

Tuition fee discounts

A 2% tuition fee discount will be given to all students who make full payment of their tuition fees online by the published date of enrolment.

A 20% tuition fee discount on campus-based courses will be given for all UK and international Roehampton alumni holding a full undergraduate degree or postgraduate qualification and those who studied here on an exchange/study abroad programme, for any higher programme of study. This reduction will be applied to the tuition fee prior to payment.

Campus tours

We are proud of our beautiful parkland campus and would like to invite you to come and visit it! You can either register for an open day during the academic year, or you can contact us for a private campus tour. For more details and to book a visit:

roehampton.ac.uk/open-days

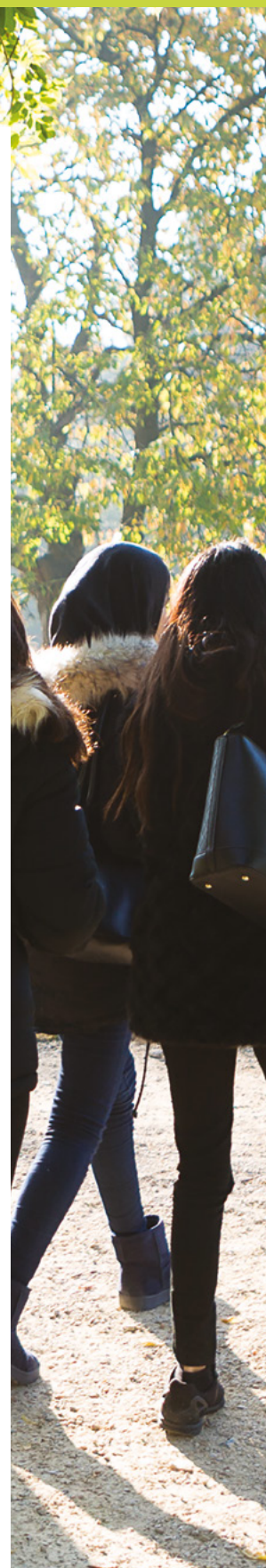
Virtual Tours


Explore our campus and facilities on this virtual tour. Go behind the scenes of our arts facilities, visit our nursing suite, get a taste of the classroom in our education buildings, discover the labs for our life sciences and psychology students and see the other academic spaces across campus.

<https://www.roehampton.ac.uk/virtual-tour/>

Contact us

international@roehampton.ac.uk





“Taking studies in this breathtaking place has completely changed my life, taught me new skills and showed me the world of opportunities I had no idea existed while living in Poland. Being a student at this university gives me the chance to take up an internship and after that a well-paid job in a dream company. In addition, a huge variety of new learning equipment and the social activities will be my entry ticket to the world’s possibilities after graduation.”

Agata Gruszecka,
BSc Business Management
and Economics



Campus and accommodation

Although our beautiful campus provides a close-knit community feel, we have modern, cutting edge facilities and a vibrant social scene. Best of all, we are in the heart of south-west London, close to Putney and Hammersmith and within easy reach of central London. Studying with us will give you the best of both worlds: the community feel of a traditional university campus, with the culture and nightlife of one of the greatest cities in the world.

A vibrant student community

You'll find a cosmopolitan atmosphere on campus, with 141 different nationalities represented, reflecting the growing international reputation of the University. Our campus environment creates a strong community feel, encouraging students to work in groups and inspiring creativity. One example of that creativity is our award winning Hive Café in the centre of Digby Square. It is part of the Growhampton sustainability project led by the Roehampton Students Union (RSU). Constructed and furnished from recycled and upcycled materials, it serves food and drink from local ethical sources, and food grown on campus by our students.

Accommodation

All international students who apply before July 31 will be guaranteed university accommodation. For many students, starting university means living away from home for the first time. This prospect can be both liberating and intimidating – especially if you are new to the UK. Most international students coming to Roehampton choose to stay on-campus in our University accommodation. Living in halls offers you independence within a safe and supportive environment. There is a wide variety of residences to choose from, both on campus and in central London. Some students prefer to be near to the University itself, while others like to live closer to central London with its many attractions. Whatever your preference, the Accommodation Office can help you to find the right place to live. Accommodation fees vary, but are generally around £139 – £215 a week. The cost includes utilities bills and contents insurance. On top of accommodation costs, students are advised to have approximately £500 per month for living expenses such as food, travel, books etc.

January and April entry

We offer a range of accommodation for students starting in January and April, applications can be made in November and February.

How to apply

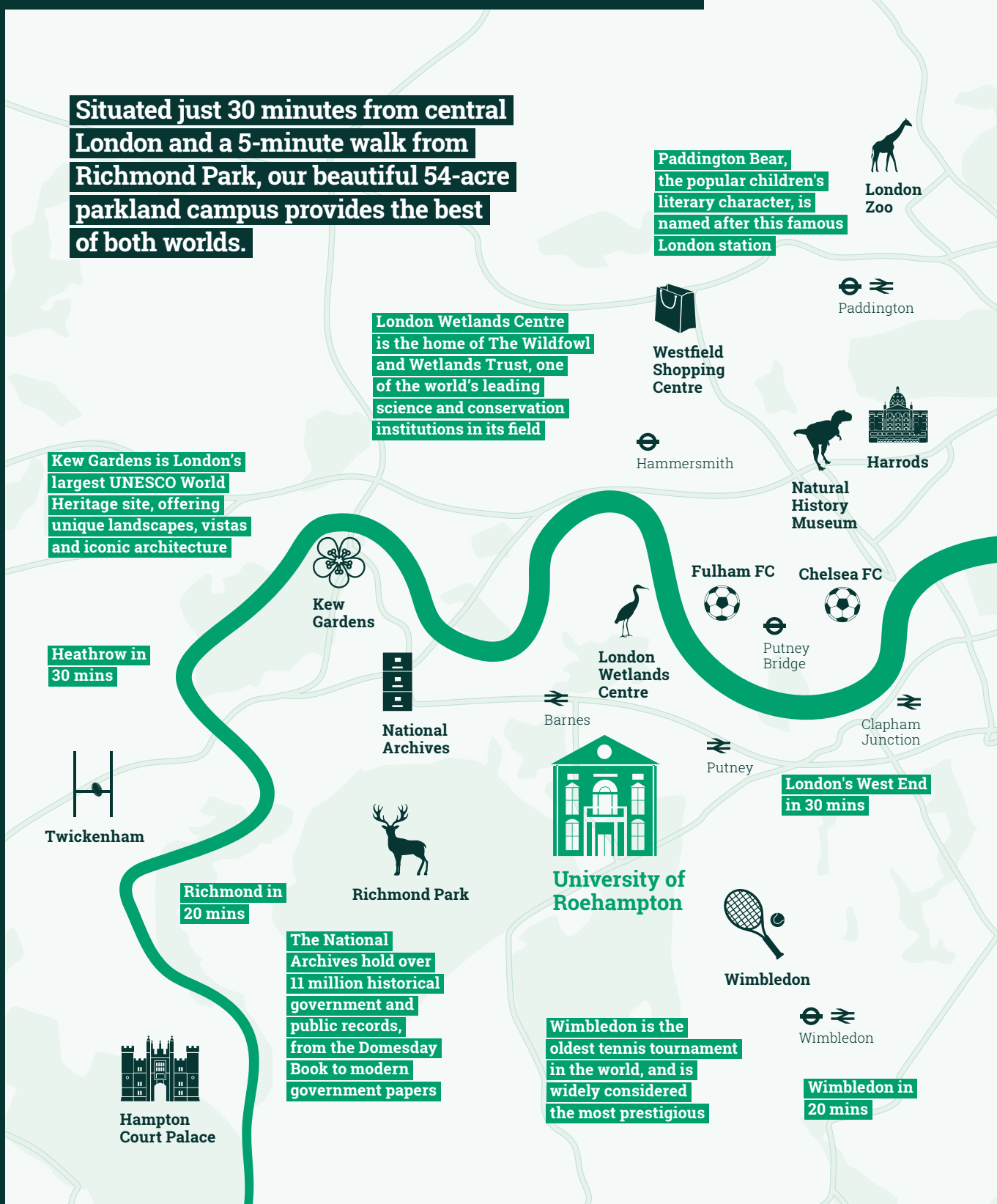
You can apply online using the accommodation website, applications for September entry can be made from the beginning of February. Check the website for more details of different halls and for virtual tours:

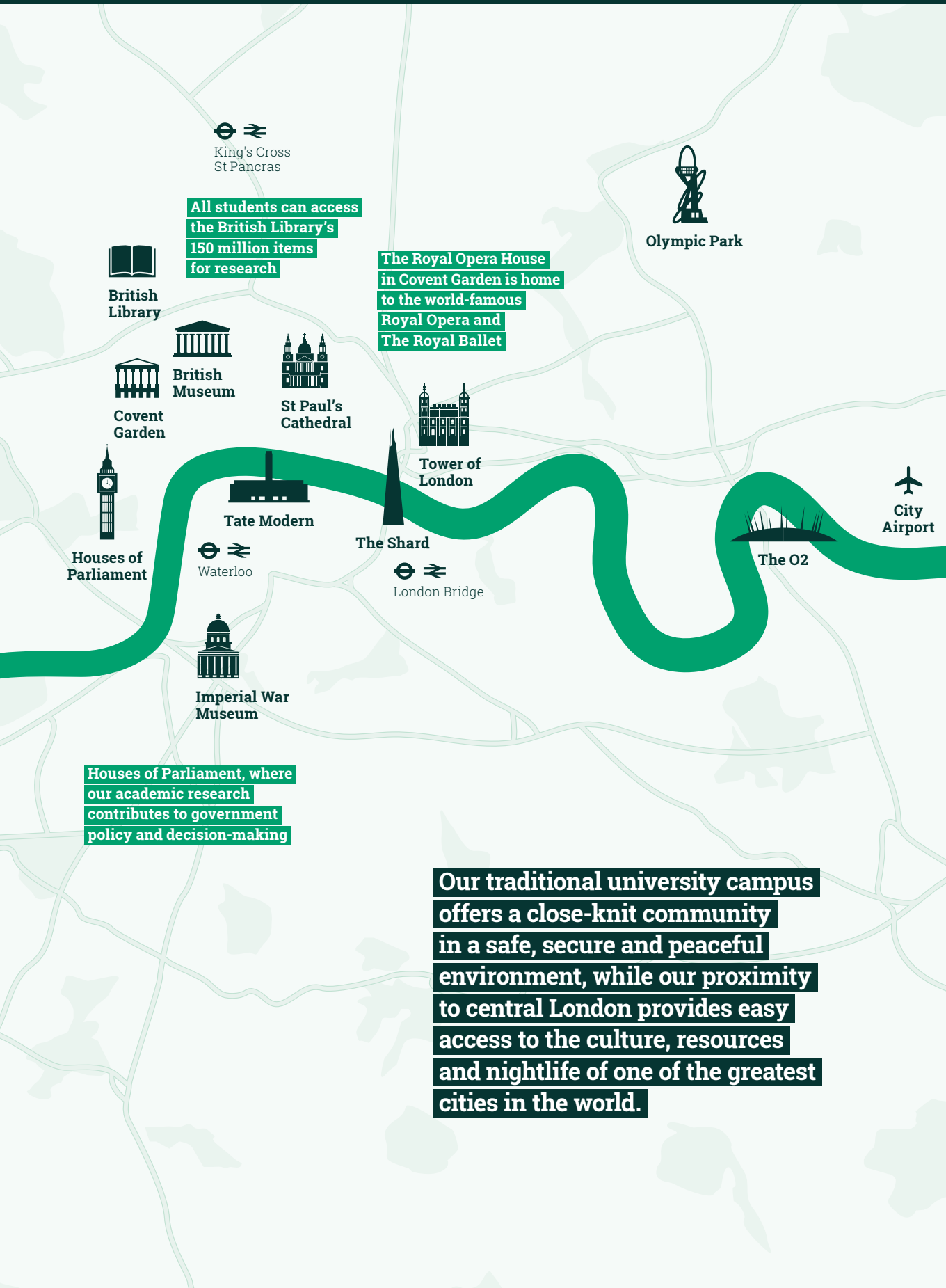
roehampton.ac.uk/accommodation



Best of both worlds

Situated just 30 minutes from central London and a 5-minute walk from Richmond Park, our beautiful 54-acre parkland campus provides the best of both worlds.





Student life

With more than 55 societies and sports clubs, there is something for everyone at Roehampton. University is your chance to acquire skills and life experience that will prove invaluable in your future career.

Clubs and Societies

The Roehampton Students' Union (RSU) provides a range of opportunities and volunteering projects, helping you to build an impressive portfolio of personal attributes. The RSU societies cover a wide range of interests, beliefs and activities. Joining a society provides the perfect way to meet like-minded people and make friends. The societies are supported by RSU but are run by students, for students. If you think there is a gap in the market, RSU can provide you with some simple guidelines to start up a new one!

Roehampton Students' Union

Roehampton Students' Union (RSU) is a student-led, democratic organisation that strives to enhance your student experience. From volunteering and societies to elections, great entertainment and much more, RSU provides something for everyone. As a Roehampton student you are automatically a part of RSU. Check the website: roehamptonstudent.com to find out more.

The Union

The Union Bar offers food, drinks and entertainment throughout the week, from quizzes and sport to acoustic nights, live bands and karaoke. It's a great place to relax, socialise with friends and meet fellow students. RSU runs weekly events such as the Bop, Fez Club, The Grand and larger events including Freshers' Week and the highlight of the year – the Summer Ball. Alongside all the fun and extracurricular activities, RSU also provides support.

If you are experiencing difficulties, then please get in touch. RSU exists to represent you and to help resolve any issues you may have.

Sport at Roehampton

Sport Roehampton provides high-quality sport, physical activity and health services for Roehampton students and staff, the local community and elite athletes. All clubs are open to everyone, and most offer coached sessions and opportunities to compete. There are plenty of opportunities to represent the University of Roehampton against other universities as a member of one of the 20 teams that compete regularly in the British Universities and Colleges Sport (BUCS) leagues.

Music at Roehampton

Roehampton has an active musical scene and there are opportunities to participate in a broad range of musical styles. From jazz to music theatre, opera to rap, band nights and acoustic gigs at 'Live at the Hive' – there are plenty of chances to get involved. Roehampton has two choirs – one for students and one for staff – which come together for big events. The University's famous steel band meets weekly, with arrangements of classic and contemporary songs by students and their experienced director, Anne Hornby. There are lunchtime concerts every week, where students can try-out their material in front of their friends, and a big Christmas Gala Concert held each year, where we celebrate the diversity of Roehampton's talent. Each college has pianos for practice and we have dedicated music space for rehearsals.



“There are lots of great societies on campus, and they are a great way to meet like-minded people or just to try something completely new.”

Maria O’Keeffe,
BSc Nutrition and Health

Student support and careers

At Roehampton, we provide a range of services to help you make choices about your career and plan for life after graduation. We offer a year-round calendar of careers fairs and special events featuring guest speakers who will share their knowledge and experience with you.

The Careers Service is based in The Hub (Elm Grove) where you can meet with a Careers Adviser to create a careers plan. We provide guidance on career issues, job applications, volunteering and work experience, further study, and planning for the future.

CareerLink is our dedicated careers portal for Roehampton students containing a job search engine, careers e-learning zone and information about our events, workshops and programmes including the Chancellor's Career Award. You can download the CareerLink app for instant access through your smart phone.

We organise workshops covering CV writing, applications and interview skills. You can ask a careers question or have your CV checked by emailing:

careers@roehampton.ac.uk

The Placements and Work Experience Team are also based in The Hub, and can support you in securing work experience by signposting you to various schemes, including the Roehampton Internship Scheme, and offer advice around searching for work experience. The team can be contacted at:

internships@roehampton.ac.uk

Study support

Online

The Library Portal (on the Student Portal) has lots of information, tutorials and guides on how to use the library, its resources and all the services we offer.

The Learning Skills Hub on Moodle offers a wide range of study skills, interactive resources and recordings on topics including academic writing, referencing and avoiding plagiarism, literature searching, understanding feedback, statistics and SPSS software for statistical data analysis.

Face-to-face

Library Advisers at the Welcome Desk are there to help with queries about how to use the Library and its systems or can refer users to a specialist for more complex questions.

The Academic Achievement Team provides students with guidance and advice on academic and library skills. Students can come to drop-in sessions, workshops and other events (such as assignment surgeries) that run throughout the academic year.

Nest

Your home for all things related to student life and support at Roehampton.

Whether you need a new student ID card, want to book an appointment with our Wellbeing team, have questions about your accommodation, or just want a chat, we are here for you.

Wellbeing and emotional support

Going to university provides you with the some of the most rewarding experiences you will have. But we know there may be times that you may need support, whether it is to talk through personal matters, manage a health issue or seek external advice.

Personal wellbeing support

Based in each of our four Colleges, our Student Wellbeing Officers are friendly, supportive staff who can help you with anything from managing your finances to dealing with personal issues.

Professional counselling

We provide a range of confidential professional counselling services to help you address personal or emotional problems and help you overcome them.

Mental health support

Our mental health advisers can support you if you are experiencing difficulties related to a mental health diagnosis. This can involve providing interventions, offering advice and guidance, signposting to specialist support services and working with you to strengthen self-management strategies.

Medical support

We have our own on-campus NHS medical centre, offering doctor and nurse-led services, throughout term time. They can also arrange for you to receive vaccinations if you are travelling abroad and can refer you to one of the many local specialist medical facilities we have in south-west London.



How to apply



At undergraduate level, international students can apply directly to Roehampton using the Roehampton online application form found on the University website. This application route is not available to UK students.

https://uniofroehampton.force.com/OnlineApp/TX_SiteLogin?startURL=%2FOnlineApp%2FTargetX_Portal__PB

Home students can make an application (for up to five courses) online through a central admissions body called the Universities and Colleges Admissions Service (UCAS).

ucas.com

For postgraduate programmes, international applicants should apply using the Roehampton online application form. Most international applicants have to pay a deposit before securing their place.

https://uniofroehampton.force.com/OnlineApp/TX_SiteLogin?startURL=%2FOnlineApp%2FTargetX_Portal__PB

Your timeline to Roehampton

1

Do your research

Identify universities and courses you like and think will be a good fit.

2

Talk to us

We often travel overseas so come and speak to us next time we are visiting your country! Or contact us via email, phone, Facebook or our website!

3

Submit your application to study with us

Apply via UCAS (UK students) or directly on our website (EU and international students). We will usually get back to you within a week or two.

4

Receive your decision

If your application has met our requirements but you are still waiting for some results you will receive a 'conditional' offer.

5

Accept your offer to study at Roehampton

Have a think about your options and accept your offer either on UCAS, online or by emailing us.

6

Apply for University accommodation

Once you have accepted your offer, you can apply for accommodation on-campus. Make sure you apply before the deadline for a guaranteed room!

7

Meet any remaining conditions

Waiting for results? Send them to us as soon as you have them!

8

Apply for funding

Once your status has been changed to unconditional, you can apply for funding for your tuition fees and living costs (if relevant).

9

Organise your travel

If travelling by airplane, check on our website and register for an airport pick up.

10

Figure out what to pack

Only bring what you can carry! You can buy any essentials from here.



Start your journey to Roehampton!



“My degree at Roehampton absolutely helped elevate my career. It introduced not only an intense focus to detail in research, but also exposed me to a number of different approaches to dance, theory, and practice. The way I approach dance and research today is in no small part due to my skills attained at Roehampton.”

Ryan Rockmore, USA
MA Dance Anthropology







Contact us

E: international@roehampton.ac.uk
T: +44 (0)20 8392 3232

roehampton.ac.uk
twitter.com/roehamptonuni
facebook.com/roehampton.uni
instagram.com/uni_roehampton
tiktok.com/@uni_roehampton

This handbook was accurate at the time of going to print.
It is important therefore that you check the University website
for updates as some information is subject to change.