



NOT JUST AN EDUCATION -
IT'S AN ADVENTURE



**COLLEGE
CONTACT.COM**

College Contact GmbH
Hanauer Landstraße 151-153, 60314 Frankfurt am Main
Telefon: 069 - 907 2007 30
E-Mail: beratung@college-contact.com
Web: <https://www.college-contact.com>



**HAWAII
PACIFIC**
UNIVERSITY

EXPERIENCE HAWAII

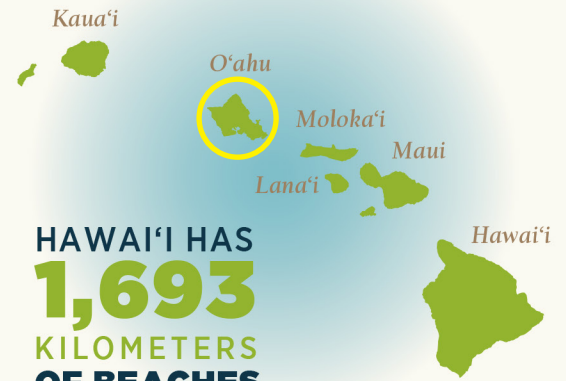


Amidst Hawai'i's beauty, renowned outdoor activities and sea turtles...experience countless opportunities in:
SCIENCE, CULTURE, AND BUSINESS

ABOUT HAWAII HISTORY

Island Nation and Royal Roots

The Polynesians were the first to migrate to the Hawaiian Islands roughly 1,500 years ago. The Hawaiian culture flourished through the art of hula, the sport of surfing, and the unique social system kapu (taboo). In 1810, King Kamehameha united the eight Hawaiian Islands into one kingdom. Then on August 21, 1959, Hawai'i officially became the 50th U.S. state. Today, 'Iolani Palace, located in downtown Honolulu, is the only royal palace in the U.S.



HAWAII HAS
1,693
KILOMETERS
OF BEACHES

ABOUT HAWAII ACTIVITIES

HPU's diverse campus locations provide the perfect backdrop for students to enjoy numerous amenities and island activities. Students often attend theater productions, cultural events, concerts, sports events, and tour art galleries and museums; and they enjoy year-round outdoor activities such as surfing, body boarding, hiking and swimming, thanks to an average island temperature of 27 degrees Celsius. These amenities, combined with HPU's reputation for academic excellence, great value and affordability provide not just a great education, but an unforgettable adventure.



ABOUT HAWAII FUN FACTS

- State Bird: Nene Goose (Hawaiian Goose)
- State Fish: Humuhumunukunukuapua'a (Reef Triggerfish)
- Number of Islands in Hawaii: 8
- Average temperature: 27 degrees Celsius
- Kilometers of beaches: 1,693
- Hawai'i has the only royal palace in the USA
- Letters in the Hawaiian alphabet: 12

SEMESTER IN PARADISE AT HPU

WHAT YOU CAN EXPECT:

Diverse classroom with students from all over the world and the United States.

Priority course registration – get your courses before they fill up and know well in advance what courses you will be taking!

Attend courses from multiple subjects.

Gain transferable academic credits for your program at home.

Get to know a different, unique culture in the beautiful Hawaiian islands.

Make lifelong connections through the international community of HPU and Honolulu.

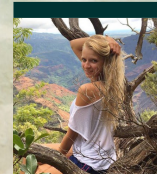
Diverse Student Body



EDUCATING STUDENTS FROM ALL

50 STATES
AND **70 COUNTRIES**

STUDENTS WHO INSPIRE US



**Kristina
Lavrinov**
GERMANY

“Studying at HPU is an awesome experience. It’s great to see and experience the American way of teaching and being part of a totally diverse university. It is great to have the chance to study what you’re really interested in. There is really nothing better than studying at Waikiki Beach while watching the most beautiful sunsets and living the real Aloha spirit.”

Home institution: International School of Management – Hamburg, Germany



**Ole Martin Aabrek
Naess**
NORWAY

“I came to HPU as a visiting student. I wasn’t sure what to expect when I first arrived, all I knew was that I wanted a different experience. I immediately fell in love with Hawaii’s tropical weather, beautiful beaches, green mountains, and diverse people. I decided that a visiting program wasn’t enough, so I ended up pursuing my bachelor’s degree.”

Home institution: Askøy Videregående Skole – Bergen, Norway

ABOUT HPU AT A GLANCE

- Visiting Student Scholarships available! For more information, contact visiting@hpu.edu.
- Approximately 5,000 undergraduate and graduate students
- Ranked America’s #1 university for diversity
- Ranked best for Return on Investment in Hawai‘i
- Average class size: 20
- 13:1 student to faculty ratio



STEPS TO APPLY CHECKLIST

- Online application at hpu.edu/apply (including \$55 application fee and \$200 registration deposit)
- Academic transcripts in English
- Proof of English proficiency (country specific language requirements)
- Copy of passport
- Health Clearance forms
- Statement of Financial Sponsorship form (SFS) and bank statements
- Proof of government funding (if applicable)
- Course Request Form



Office of Admissions
1 Aloha Tower Drive
Honolulu, HI 96813

Direct: +1 866-CALL-HPU
 Email: visiting@hpu.edu
visithpu.com

STAY CONNECTED:



DOWNLOAD HPU'S MOBILE APP!



ABOUT HPU

ALOHA TOWER MARKETPLACE

The Waterfront Lofts at Aloha Tower is a new development that includes a vibrant, mixed-use residential and commercial center designed to serve the Hawai'i community and our students. This development includes Waterfront Lofts, HPU facilities such as the Learning Commons, a Faculty-Student Lounge, multipurpose rooms, HPU offices, and various retail and dining options. Living at the Waterfront Lofts provides easy access to many amenities, activities, and public transportation in downtown Honolulu.

OFF-CAMPUS HOUSING

Oahu offers a wide variety of off-campus housing in the community, from private rooms to rent to studio apartments and homes. Consider your monthly budget and arriving early enough to secure a rental unit before classes begin. Review and research your options and become familiar with the market about a month before your desired move-in date, and begin calling landlords to set up viewings about one to two weeks prior to arriving. For more information on available options, where to search and smart renting tips, visit HPU's Off Campus Housing webpage.

Visit hpu.edu/waterfrontlofts for more information.